

To our customers,

Old Company Name in Catalogs and Other Documents

On April 1st, 2010, NEC Electronics Corporation merged with Renesas Technology Corporation, and Renesas Electronics Corporation took over all the business of both companies. Therefore, although the old company name remains in this document, it is a valid Renesas Electronics document. We appreciate your understanding.

Renesas Electronics website: <http://www.renesas.com>

April 1st, 2010
Renesas Electronics Corporation

Issued by: Renesas Electronics Corporation (<http://www.renesas.com>)

Send any inquiries to <http://www.renesas.com/inquiry>.

Notice

1. All information included in this document is current as of the date this document is issued. Such information, however, is subject to change without any prior notice. Before purchasing or using any Renesas Electronics products listed herein, please confirm the latest product information with a Renesas Electronics sales office. Also, please pay regular and careful attention to additional and different information to be disclosed by Renesas Electronics such as that disclosed through our website.
2. Renesas Electronics does not assume any liability for infringement of patents, copyrights, or other intellectual property rights of third parties by or arising from the use of Renesas Electronics products or technical information described in this document. No license, express, implied or otherwise, is granted hereby under any patents, copyrights or other intellectual property rights of Renesas Electronics or others.
3. You should not alter, modify, copy, or otherwise misappropriate any Renesas Electronics product, whether in whole or in part.
4. Descriptions of circuits, software and other related information in this document are provided only to illustrate the operation of semiconductor products and application examples. You are fully responsible for the incorporation of these circuits, software, and information in the design of your equipment. Renesas Electronics assumes no responsibility for any losses incurred by you or third parties arising from the use of these circuits, software, or information.
5. When exporting the products or technology described in this document, you should comply with the applicable export control laws and regulations and follow the procedures required by such laws and regulations. You should not use Renesas Electronics products or the technology described in this document for any purpose relating to military applications or use by the military, including but not limited to the development of weapons of mass destruction. Renesas Electronics products and technology may not be used for or incorporated into any products or systems whose manufacture, use, or sale is prohibited under any applicable domestic or foreign laws or regulations.
6. Renesas Electronics has used reasonable care in preparing the information included in this document, but Renesas Electronics does not warrant that such information is error free. Renesas Electronics assumes no liability whatsoever for any damages incurred by you resulting from errors in or omissions from the information included herein.
7. Renesas Electronics products are classified according to the following three quality grades: “Standard”, “High Quality”, and “Specific”. The recommended applications for each Renesas Electronics product depends on the product’s quality grade, as indicated below. You must check the quality grade of each Renesas Electronics product before using it in a particular application. You may not use any Renesas Electronics product for any application categorized as “Specific” without the prior written consent of Renesas Electronics. Further, you may not use any Renesas Electronics product for any application for which it is not intended without the prior written consent of Renesas Electronics. Renesas Electronics shall not be in any way liable for any damages or losses incurred by you or third parties arising from the use of any Renesas Electronics product for an application categorized as “Specific” or for which the product is not intended where you have failed to obtain the prior written consent of Renesas Electronics. The quality grade of each Renesas Electronics product is “Standard” unless otherwise expressly specified in a Renesas Electronics data sheets or data books, etc.
 - “Standard”: Computers; office equipment; communications equipment; test and measurement equipment; audio and visual equipment; home electronic appliances; machine tools; personal electronic equipment; and industrial robots.
 - “High Quality”: Transportation equipment (automobiles, trains, ships, etc.); traffic control systems; anti-disaster systems; anti-crime systems; safety equipment; and medical equipment not specifically designed for life support.
 - “Specific”: Aircraft; aerospace equipment; submersible repeaters; nuclear reactor control systems; medical equipment or systems for life support (e.g. artificial life support devices or systems), surgical implantations, or healthcare intervention (e.g. excision, etc.), and any other applications or purposes that pose a direct threat to human life.
8. You should use the Renesas Electronics products described in this document within the range specified by Renesas Electronics, especially with respect to the maximum rating, operating supply voltage range, movement power voltage range, heat radiation characteristics, installation and other product characteristics. Renesas Electronics shall have no liability for malfunctions or damages arising out of the use of Renesas Electronics products beyond such specified ranges.
9. Although Renesas Electronics endeavors to improve the quality and reliability of its products, semiconductor products have specific characteristics such as the occurrence of failure at a certain rate and malfunctions under certain use conditions. Further, Renesas Electronics products are not subject to radiation resistance design. Please be sure to implement safety measures to guard them against the possibility of physical injury, and injury or damage caused by fire in the event of the failure of a Renesas Electronics product, such as safety design for hardware and software including but not limited to redundancy, fire control and malfunction prevention, appropriate treatment for aging degradation or any other appropriate measures. Because the evaluation of microcomputer software alone is very difficult, please evaluate the safety of the final products or system manufactured by you.
10. Please contact a Renesas Electronics sales office for details as to environmental matters such as the environmental compatibility of each Renesas Electronics product. Please use Renesas Electronics products in compliance with all applicable laws and regulations that regulate the inclusion or use of controlled substances, including without limitation, the EU RoHS Directive. Renesas Electronics assumes no liability for damages or losses occurring as a result of your noncompliance with applicable laws and regulations.
11. This document may not be reproduced or duplicated, in any form, in whole or in part, without prior written consent of Renesas Electronics.
12. Please contact a Renesas Electronics sales office if you have any questions regarding the information contained in this document or Renesas Electronics products, or if you have any other inquiries.

(Note 1) “Renesas Electronics” as used in this document means Renesas Electronics Corporation and also includes its majority-owned subsidiaries.

(Note 2) “Renesas Electronics product(s)” means any product developed or manufactured by or for Renesas Electronics.

Application Note

Triplex LCD Driver Using General Purpose Ports of μ PD7801x

① **PRECAUTION AGAINST ESD FOR SEMICONDUCTORS**

Note:

Strong electric field, when exposed to a MOS device, can cause destruction of the gate oxide and ultimately degrade the device operation. Steps must be taken to stop generation of static electricity as much as possible, and quickly dissipate it once, when it has occurred. Environmental control must be adequate. When it is dry, humidifier should be used. It is recommended to avoid using insulators that easily build static electricity. Semiconductor devices must be stored and transported in an anti-static container, static shielding bag or conductive material. All test and measurement tools including work bench and floor should be grounded. The operator should be grounded using wrist strap. Semiconductor devices must not be touched with bare hands. Similar precautions need to be taken for PW boards with semiconductor devices on it.

② **HANDLING OF UNUSED INPUT PINS FOR CMOS**

Note:

No connection for CMOS device inputs can be cause of malfunction. If no connection is provided to the input pins, it is possible that an internal input level may be generated due to noise, etc., hence causing malfunction. CMOS devices behave differently than Bipolar or NMOS devices. Input levels of CMOS devices must be fixed high or low by using a pull-up or pull-down circuitry. Each unused pin should be connected to V_{DD} or GND with a resistor, if it is considered to have a possibility of being an output pin. All handling related to the unused pins must be judged device by device and related specifications governing the devices.

③ **STATUS BEFORE INITIALIZATION OF MOS DEVICES**

Note:

Power-on does not necessarily define initial status of MOS device. Production process of MOS does not define the initial operation status of the device. Immediately after the power source is turned ON, the devices with reset function have not yet been initialized. Hence, power-on does not guarantee out-pin levels, I/O settings or contents of registers. Device is not initialized until the reset signal is received. Reset operation must be executed immediately after power-on for devices having reset function.

- The information in this document is current as of 07.04, 2004. The information is subject to change without notice. For actual design-in, refer to the latest publications of NEC Electronics data sheets or data books, etc., for the most up-to-date specifications of NEC Electronics products. Not all products and/or types are available in every country. Please check with an NEC sales representative for availability and additional information.
- No part of this document may be copied or reproduced in any form or by any means without prior written consent of NEC Electronics. NEC Electronics assumes no responsibility for any errors that may appear in this document.
- NEC Electronics does not assume any liability for infringement of patents, copyrights or other intellectual property rights of third parties by or arising from the use of NEC Electronics products listed in this document or any other liability arising from the use of such NEC Electronics products. No license, express, implied or otherwise, is granted under any patents, copyrights or other intellectual property rights of NEC Electronics or others.
- Descriptions of circuits, software and other related information in this document are provided for illustrative purposes in semiconductor product operation and application examples. The incorporation of these circuits, software and information in the design of customer's equipment shall be done under the full responsibility of customer. NEC Electronics no responsibility for any losses incurred by customers or third parties arising from the use of these circuits, software and information.
- While NEC Electronics endeavors to enhance the quality, reliability and safety of NEC Electronics products, customers agree and acknowledge that the possibility of defects thereof cannot be eliminated entirely. To minimize risks of damage to property or injury (including death) to persons arising from defects in NEC Electronics products, customers must incorporate sufficient safety measures in their design, such as redundancy, fire-containment and anti-failure features.
- NEC Electronics products are classified into the following three quality grades: "Standard", "Special" and "Specific".

The "Specific" quality grade applies only to NEC Electronics products developed based on a customer-designated "quality assurance program" for a specific application. The recommended applications of NEC Electronics product depend on its quality grade, as indicated below. Customers must check the quality grade of each NEC Electronics product before using it in a particular application.

- | | |
|-------------|---|
| "Standard": | Computers, office equipment, communications equipment, test and measurement equipment, audio and visual equipment, home electronic appliances, machine tools, personal electronic equipment and industrial robots. |
| "Special": | Transportation equipment (automobiles, trains, ships, etc.), traffic control systems, anti-disaster systems, anti-crime systems, safety equipment and medical equipment (not specifically designed for life support). |
| "Specific": | Aircraft, aerospace equipment, submersible repeaters, nuclear reactor control systems, life support systems and medical equipment for life support, etc. |

The quality grade of NEC Electronics products is "Standard" unless otherwise expressly specified in NEC Electronics data sheets or data books, etc. If customers wish to use NEC Electronics products in applications not intended by NEC Electronics, they must contact NEC Electronics sales representative in advance to determine NEC Electronics 's willingness to support a given application.

- Notes:**
1. " NEC Electronics" as used in this statement means NEC Electronics Corporation and also includes its majority-owned subsidiaries.
 2. " NEC Electronics products" means any product developed or manufactured by or for NEC Electronics (as defined above).

M8E 02.10

Regional Information

Some information contained in this document may vary from country to country. Before using any NEC product in your application, please contact the NEC office in your country to obtain a list of authorized representatives and distributors. They will verify:

- Device availability
- Ordering information
- Product release schedule
- Availability of related technical literature
- Development environment specifications (for example, specifications for third-party tools and components, host computers, power plugs, AC supply voltages, and so forth)
- Network requirements

In addition, trademarks, registered trademarks, export restrictions, and other legal issues may also vary from country to country.

NEC Electronics America Inc.

Santa Clara, California
Tel: 408-588-6000
800-366-9782
Fax: 408-588-6130
800-729-9288

NEC Electronics (Europe) GmbH

Duesseldorf, Germany
Tel: 0211-65 03 1101
Fax: 0211-65 03 1327

Sucursal en España

Madrid, Spain
Tel: 091- 504 27 87
Fax: 091- 504 28 60

Succursale Française

Vélizy-Villacoublay, France
Tel: 01-30-67 58 00
Fax: 01-30-67 58 99

Filiale Italiana

Milano, Italy
Tel: 02-66 75 41
Fax: 02-66 75 42 99

Branch The Netherlands

Eindhoven, The Netherlands
Tel: 040-244 58 45
Fax: 040-244 45 80

Branch Sweden

Taeby, Sweden
Tel: 08-63 80 820
Fax: 08-63 80 388

United Kingdom Branch

Milton Keynes, UK
Tel: 01908-691-133
Fax: 01908-670-290

NEC Electronics Hong Kong Ltd.

Hong Kong
Tel: 2886-9318
Fax: 2886-9022/9044

NEC Electronics Hong Kong Ltd.

Seoul Branch
Seoul, Korea
Tel: 02-528-0303
Fax: 02-528-4411

NEC Electronics Singapore Pte. Ltd.

Singapore
Tel: 65-6253-8311
Fax: 65-6250-3583

NEC Electronics Taiwan Ltd.

Taipei, Taiwan
Tel: 02-2719-2377
Fax: 02-2719-5951

Table of Contents

Chapter 1	Features	9
1.1	Introduction	9
1.2	Differences to a common LCD Controller/Driver	9
Chapter 2	Hardware Realisation	11
2.1	Pin/Segment Organisation for a 9×3 Segment Triplex LCD-Display	11
2.1.1	Relation LCD-Segments and Display-RAM of CPU	11
2.1.2	Segment example for an LCD-Glass	12
Chapter 3	Program Flowcharts	15
3.1	Initialisation	15
3.2	Interrupt-Handler	16
3.2.1	Dispatcher	16
3.2.2	Phase 1 (COM11)	16
3.2.3	Phase 2 (COM12)	17
3.2.4	Phase 3 (COM21)	17
3.2.5	Phase 4 (COM22)	18
3.2.6	Phase 5 (COM31)	18
3.2.7	Phase 6 (COM32)	19
Chapter 4	Example Program	21
4.1	Listing 1	21
4.2	Circuit Diagram for the Example Program	27

List of Figures

Figure 2-1:	Principle Circuit Diagram	13
Figure 2-2:	Timing Example.....	14
Figure 3-1:	Initialisation Flow	15
Figure 3-2:	Dispatcher Flow.....	16
Figure 3-3:	Phase 1 (COM11) Flow	16
Figure 3-4:	Phase 2 (COM12) Flow	17
Figure 3-5:	Phase 3 (COM21) Flow	17
Figure 3-6:	Phase 4 (COM22) Flow	18
Figure 3-7:	Phase 5 (COM31) Flow	18
Figure 3-8:	Phase 6 (COM32) Flow	19
Figure 4-1:	Circuit Diagram.....	27

List of Tables

Table 2-1:	Pin/Segment Organisation.....	11
Table 2-2:	Relation LCD-Segments and Display-RAM of CPU	11
Table 2-3:	Segment Example for an LCD-Glass	12

Chapter 1 Features

1.1 Introduction

There are a lot of applications existing, only a small display is necessary.

The connection of a "Static" display type is very easy, because there are only two voltage levels (V_{DD} & V_{SS}) to control as well on common as on segments lines.

But for a multiplexed display type ("Duplex" or "Triplex") several intermediate voltage levels have to be controlled.

Hereafter the control of a "Triplex" LCD module is described using the μ PD78P014. This application note is adaptable to all devices out of the μ COM 78K0 family.

1.2 Differences to a common LCD Controller/Driver

1. The different LCD-Voltage levels, needed for the common lines of an Triplex-LCD Display are generated using external resistor networks and the tri-state function of the μ PD78P014 port structure. This gives a disadvantage of 4 resistors against a similar solution using a common LCD controller/driver product like the NEC μ PD7225.
2. Using a common LCD Controller/Driver the LCD voltage can be vary over a wide range and can be adopted easy to the LCD display. In the solution described hereafter the LCD-Voltage is fixed to the VDD level of the general purpose CPU.

[MEMO]

Chapter 2 Hardware Realisation

2.1 Pin/Segment Organisation for a 9×3 Segment Triplex LCD-Display

In the table below the connection of an 9×3 Triplex-Mode LCD display to port pins of the μ PD78P014 are listed:

Table 2-1: Pin/Segment Organisation

PORT / PIN	SEGMENT	Description
P5.0 / Pin 26	S0	Segment Line 0
P5.1 / Pin 27	S1	Segment Line 1
P5.2 / Pin 28	S2	Segment Line 2
P5.3 / Pin 29	S3	Segment Line 3
P5.4 / Pin 30	S4	Segment Line 4
P5.5 / Pin 31	S5	Segment Line 5
P5.6 / Pin 33	S6	Segment Line 6
P5.7 / Pin 34	S7	Segment Line 7
P6.7 / Pin 42	S8	Segment Line 8
P6.4 / Pin 39	COM1 (C1)	COMMON Line 1
P6.5 / Pin 40	COM2 (C2)	COMMON Line 2
P6.6 / Pin 41	COM3 (C3)	COMMON Line 3

2.1.1 Relation LCD-Segments and Display-RAM of CPU

Table 2-2: Relation LCD-Segments and Display-RAM of CPU

SEGMENT	COM1 (C1)	COM2 (C2)	COM3 (C3)
S0	FADA.0	FADC.0	FADE.0
S1	FADA.1	FADC.1	FADE.1
S2	FADA.2	FADC.2	FADE.2
S3	FADA.3	FADC.3	FADE.3
S4	FADA.4	FADC.4	FADE.4
S5	FADA.5	FADC.5	FADE.5
S6	FADA.6	FADC.6	FADE.6
S7	FADA.7	FADC.7	FADE.7
S8	FADB.0	FADD.0	FADF.0

2.1.2 Segment example for an LCD-Glass

Table 2-3: Segment Example for an LCD-Glass

Address	BIT0	BIT1	BIT2	BIT3	BIT4	BIT5	BIT6	BIT7
FADA	S0-C1 (2A)	S1-C1 (1B)	S2-C1 (2B)	S3-C1 (unused)	S4-C1 (3A)	S5-C1 (4A)	S6-C1 (4F)	S7-C1 (unused)
FADB	S8-C1 (3B)							
FADC	S0-C2 (2F)	S1-C2 (1ADEG)	S2-C2 (2G)	S3-C2 (2C)	S4-C2 (3F)	S5-C2 (4B)	S6-C2 (4G)	S7-C2 (3C)
FADD	S8-C2 (3G)							
FADE	S0-C3 (2E)	S1-C3 (1C)	S2-C3 (2D)	S3-C3 (P1)	S4-C3 (3E)	S5-C3 (4C)	S6-C3 (4D)	S7-C3 (4E)
FADF	S8-C3 (3D)							

Figure 2-1: Principle Circuit Diagram

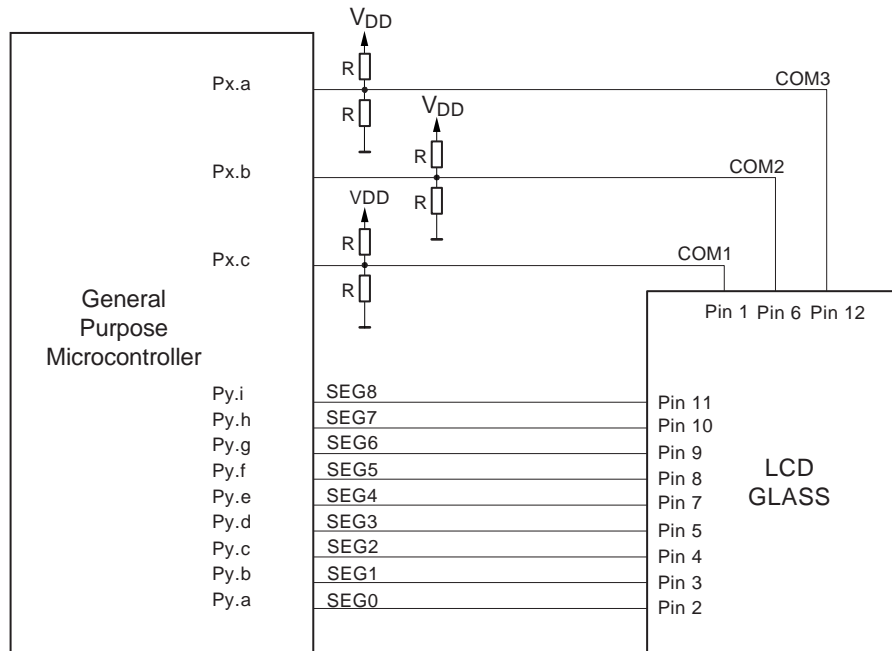
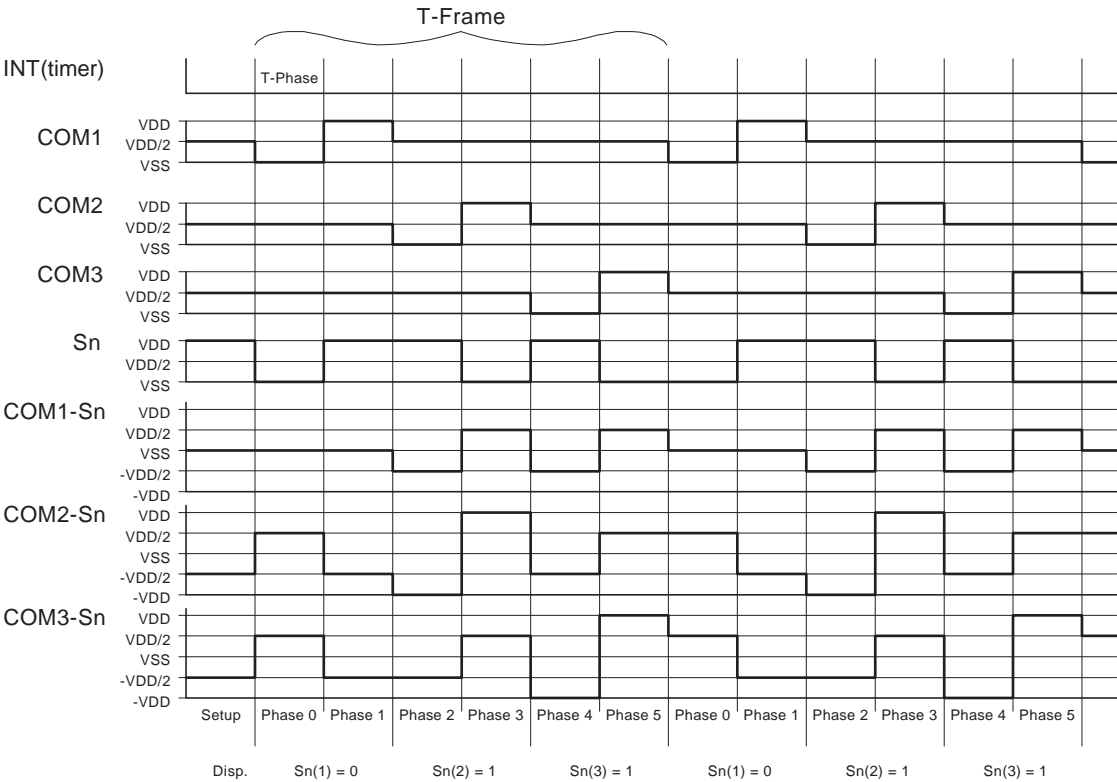


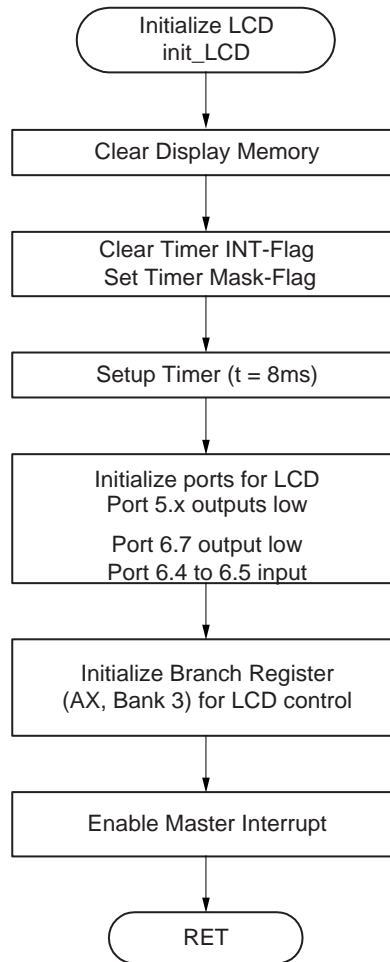
Figure 2-2: Timing Example



Chapter 3 Program Flowcharts

3.1 Initialisation

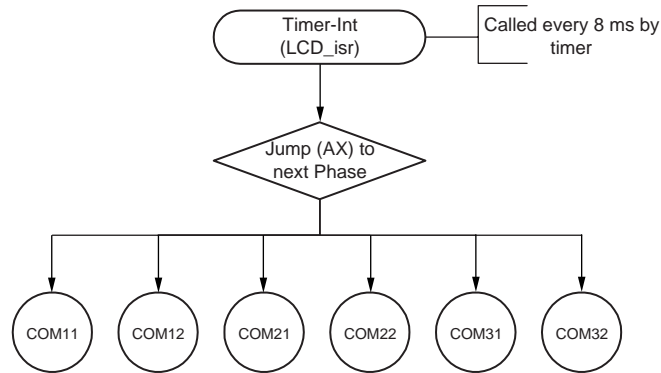
Figure 3-1: Initialisation Flow



3.2 Interrupt-Handler

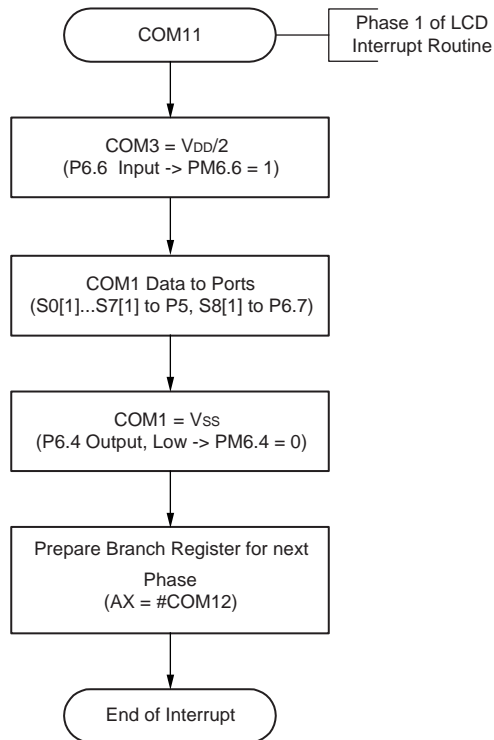
3.2.1 Dispatcher

Figure 3-2: Dispatcher Flow



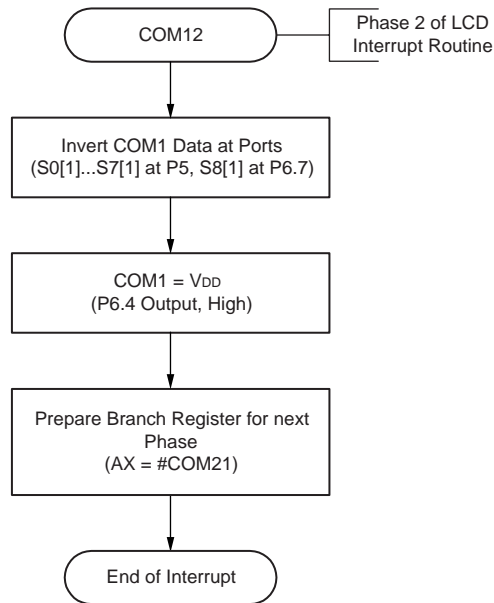
3.2.2 Phase 1 (COM11)

Figure 3-3: Phase 1 (COM11) Flow



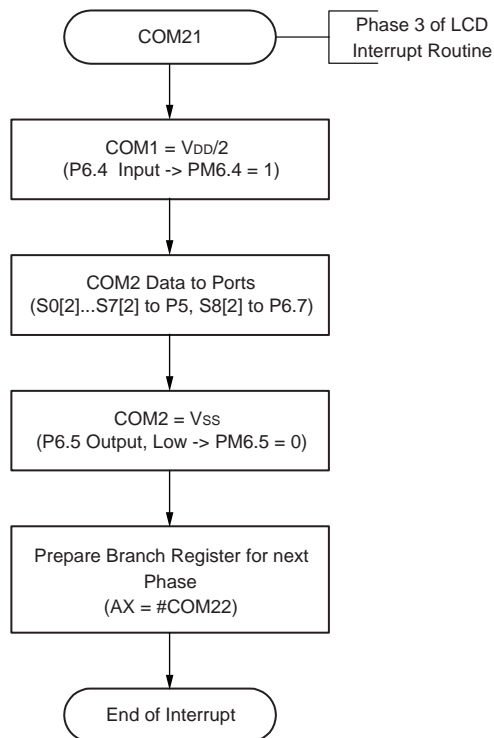
3.2.3 Phase 2 (COM12)

Figure 3-4: Phase 2 (COM12) Flow



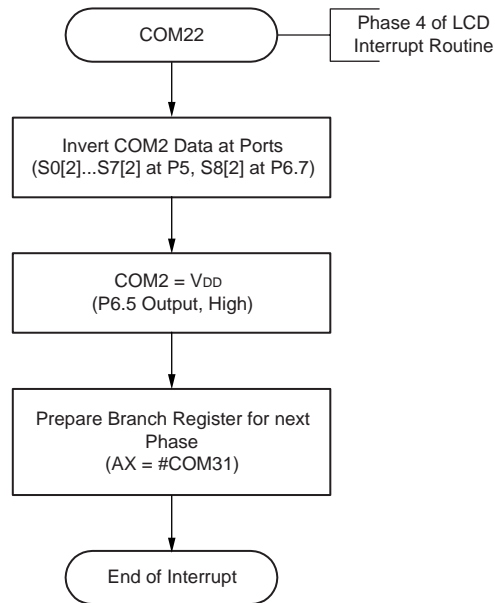
3.2.4 Phase 3 (COM21)

Figure 3-5: Phase 3 (COM21) Flow



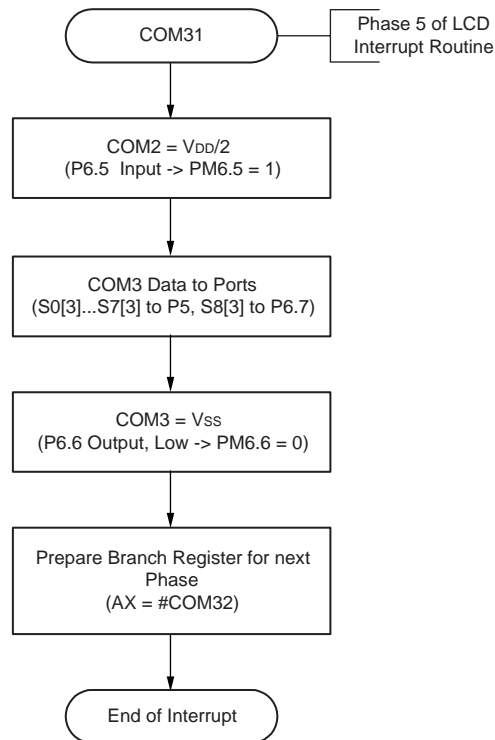
3.2.5 Phase 4 (COM22)

Figure 3-6: Phase 4 (COM22) Flow



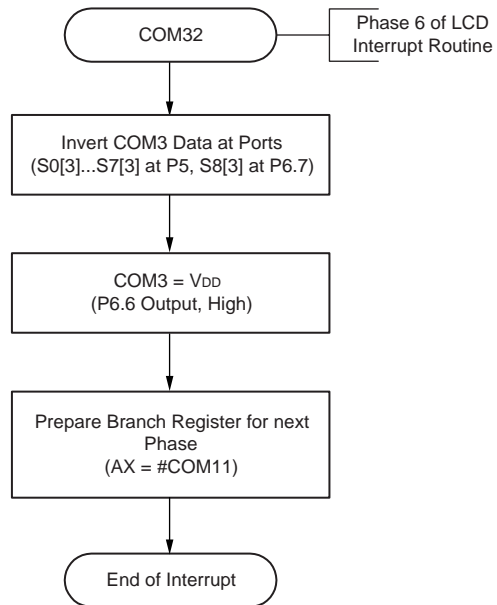
3.2.6 Phase 5 (COM31)

Figure 3-7: Phase 5 (COM31) Flow



3.2.7 Phase 6 (COM32)

Figure 3-8: Phase 6 (COM32) Flow



[MEMO]

Chapter 4 Example Program

4.1 Listing 1

```

name      TriplexLCD;TRIPLLCD.ASM    L. Lenzen, December 1995.
;
;                      L. Lenzen, January 1995.

; * Program to control the uPD78014 in a demo system which realizes an
; * triplex LCD driver/controller by standard tri-sate ports.
; * The timing of the LCD C/D service routine is critical.
; * The trigger signal is generated by TIMER3 every 15ms (@8.38MHz), which
; * is out experience of LCD C/D specialists the best compromise between CPU
; * load and LCD display contrast.
; *
; * N O T E:
; * all timings are based on a 8.38 MHz crystal (default type of IE-78000-R)
; * if a other oscillator frequency is used, the settings must be adopted.
; * As an example the alternative values for a 10 MHz oscillator frequency
; * are added as comment.
; *
; * To realize the three voltage levels, an external resistor circuitry is
; * connected to each COM line (value R depends on LCD glass current)
; *
; *          COMn
; *          o
; *          |
; * VDD o---[R]---o---[R]---o VSS
; *          |
; *          to LCD
; *
; * The purpose of the program is to show that a triplex LCD glass can be
; * controlled by a standard general purpose CPU.
; * The realized LCD Controller/Driver is a so called Dot-Matrix Driver,
; * means each segment-common line combination (a dot) can be separately
; * controlled. It also means that a character generator must be realized by
; * the user software.
; *
; * In this program a 3x9 LCD glass is assumed (thus 3 * 9 = 27 dots).
; * The Common/Segment Lines are organized related to display memory as
; * follows:
; *
; *      | SEG0 | SEG1 | SEG2 | SEG3 | SEG4 | SEG5 | SEG6 | SEG7 | SEG8 |
; *      | P5.0 | P5.1 | P5.2 | P5.3 | P5.4 | P5.5 | P5.6 | P5.7 | P6.7 |
; * -----+-----+-----+-----+-----+-----+-----+-----+-----+
; * COM1 |          FADA          | FADB |
; * P6.4 | Bit 0 | Bit 1 | Bit 2 | Bit 3 | Bit 4 | Bit 5 | Bit 6 | Bit 7 | Bit 0 |
; * -----+-----+-----+-----+-----+-----+-----+-----+
; * COM2 |          FADC          | FADD |
; * P6.5 | Bit 0 | Bit 1 | Bit 2 | Bit 3 | Bit 4 | Bit 5 | Bit 6 | Bit 7 | Bit 0 |
; * -----+-----+-----+-----+-----+-----+-----+-----+
; * COM3 |          FADE          | FADF |
; * P6.6 | Bit 0 | Bit 1 | Bit 2 | Bit 3 | Bit 4 | Bit 5 | Bit 6 | Bit 7 | Bit 0 |
; * -----+-----+-----+-----+-----+-----+-----+-----+
; *
; * The Interrupt Service Routine occupies register pair xa of Register Bank 3.
; * This register pair may not be used for other purposes than to control
; * the LCD routine.

```

```

p78P014                ;Processor type

PUBLIC V_TABLE          ; absolute definition of vectors
RSEG    INTVEC          ; Vector Area Start

V_TABLE:
    DW      start; at 0000h Reset vector
    DW      dummy
    DW      dummy
    DW      dummy
    DW      dummy
    DW      dummy
    DW      dummy
    DW      dummy
    DW      LCD_isr ; at 0012h INTTM3 vector (LCD Frame timing)

dummy:
    reti

Display EQU    0FADAh        ; memory buffer for LCD display data

    public start
    public init_LCD, LCD_clr

;-----
;      Basic Initialization (must be done before program start)
;-----
    rseg    RCODE
start:
    movw    sp,#0fee0h        ;set stack pointer
    sel     rb0                ;register bank 0 for main program
    mov     PCC,#00h
    ; -----0--      CPU clock at full speed

;-----
;      Clear CPU RAM area (just an option, only for security)
;-----
ram_clr:
    mov     a,#0                ;clear ram from FB00 to FEDF
    movw    hl,#0FE00h
    mov     b,#0DFh
clr1:
    mov     [hl+b],a
    dbnz    b,clr1
    mov     [hl+b],a
    mov     c,#3
clr2:
    dec     h
clr3:
    mov     [hl+b],a
    dbnz    b,clr3
    dbnz    c,clr2

```



```

;-----
;      Initialize System
;-----

      mov MM,#01h          ;Memory expansion mode for normal port
      ;--00----           ; no wait
      ;-----001         ; single chip mode
      ;00--0---           ; fixed to zero

      call    init_LCD      ;Initialize LCD C/D
;-----
;      start of MAIN Loop

      publicloop

loop:
      ;

;      end of MAIN Loop
;-----

;-----
;      Initialization of LCD Controller / Driver
; Based on Interval-Timer TM3 (so can operate with main or subsystem
; oscillator to enable also operation in standby modes)
;-----

init_LCD:
;-----
;      Clear the LCD Display Memory
;-----
      callLCD_clr;clear display memory
      ;

;-----
;      Initialize the Timer TM3 for LCD Frame-Timing
;-----
      clr1    MK0L.7        ; enable interrupt
      clr1    PR0L.7        ; high priority
      clr1    IF0L.7        ; clear request bit
      ;

      ;setup timer mode register for ca. 15ms (< 20ms)
      ;for subsystem clock  32.768KHz -> TMC2 = 52h, TCL24 = 1 (15.6ms)
      ;for main system clock 8.38 MHz -> TMC2 = 52h, TCL24 = 0 (15.6ms)
      ;for main system clock 10.00 MHz -> TMC2 = 52h, TCL24 = 0 (13.1ms)
      ;for main system clock 4.19 MHz -> TMC2 = 42h, TCL24 = 0 (15.6ms)
      mov TMC2,#12h         ; Interval Timer
      ;-101.-----       ; 512/fw (fw = 32.768KHz)
      ;----.-1--          ; start / enable
      ;0---.x-xx          ; don't care
      ;

```

```

;-----
;      Initialize the Branch Vector Register (RB3.AX)
;-----
mov P5,#0    ; clear all segment drivers
clr1P6.7     ;
;
mov PM5,#0   ; all segment lines are output
clr1PM6.7    ;
;
set1PM6.4    ; all common lines to VDD/2
set1PM6.5    ;
set1PM6.6    ;
;
clr1P6.4     ; prepare COM1 data
;
sel RB3      ; prepare AX(3) for first LCD service process
movwax,#COM11;
sel RB0      ;
;
;-----
;      Enable Interrupts
;-----
ei           ; now we can enable interrupts
ret          ; exit
;

;-----
;
;      Clear the LCD C/D Display memory (<=> LCD off)
;
;-----
LCD_clr:
mov     a,#0           ;clear LCD RAM from FADA to FADF
movw    hl,#Display    ;base address
mov     c,#05h         ;number of bytes + 1
lcd_clr1:
mov     [hl+c],a;
dbnz    c,lcd_clr1;
mov     [hl+c],a;
ret     ; exit
;

;-----
;
;      Frame-Interrupt Service (called every 15ms)
;
;-----

public LCD_isr, COM11, COM12, COM21, COM22, COM31, COM32

LCD_isr:
sel RB3      ;select LCD Register Bank
EI           ;all interrupts except ADC interrupt
br ax       ; jump to actual process
;

```

```

;-----
;   LCD Service Process for 1. frame
;-----
COM11:
    set1PM6.6    ;COM3 to VDD/2
    mov a,0FADAh;S0(0) - S7(0) to P5
    mov P5,a      ;
    mov a,0FADBh;S8(0) to P6.7
    rorca,1       ;
    movlP6.7,cy;
    clrlP6.4      ;prepare COM1 for VSS
    clrlPM6.4     ;COM1 to VSS
    ;-----
    ; prepare LCD Service Process for 2. frame
    ;-----
    movwax,#COM12;
    reti          ;
    ;-----
    ;   LCD Service Process for 2. frame
    ;-----
COM12:
    mov a,P5      ;invert S0(0) - S7(0)
    xor a,#0FFh   ;
    mov P5,a      ;
    movlcy,P6.7;invert S8(0)
    notlcy        ;
    movlP6.7,cy;
    setlP6.4      ;COM1 to VDD
    ;-----
    ; prepare LCD Service Process for 3. frame
    ;-----
    movwax,#COM21;
    reti          ;
    ;-----
    ;   LCD Service Process for 3. frame
    ;-----
COM21:
    setlPM6.4     ;COM1 to VDD/2
    mov a,0FADCh;S0(1) - S7(1) to P5
    mov P5,a      ;
    mov a,0FADDh;S8(1) to P6.7
    rorca,1       ;
    movlP6.7,cy;
    clrlP6.5      ;prepare COM2 for VSS
    clrlPM6.5     ;COM2 to VSS
    ;-----
    ; prepare LCD Service Process for 4. frame
    ;-----
    movwax,#COM22;
    reti          ;

```


```

;-----
;   LCD Service Process for 4. frame
;-----
COM22:
    mov a,P5      ;invert S0(1) - S7(1)
    xor a,#0FFh ;
    mov P5,a      ;
    movlcy,P6.7 ;invert S8(1)
    notlcy        ;
    movlP6.7,cy ;
    setlP6.5      ;COM2 to VDD
    ;-----
    ; prepare LCD Service Process for 5. frame
    ;-----
    movwax,#COM31;
    reti          ;
    ;-----
    ;   LCD Service Process for 5. frame
    ;-----
COM31:
    setlPM6.5      ;COM2 to VDD/2
    mov a,0FADEh    ;S0(2) - S7(2) to P5
    mov P5,a        ;
    mov a,0FADFh    ;S8(2) to P6.7
    rorca,l         ;
    movlP6.7,cy     ;
    clrlP6.6        ;prepare COM3 for VSS
    clrlPM6.6       ;COM3 to VSS
    ;-----
    ; prepare LCD Service Process for 6. frame
    ;-----
    movwax,#COM32;
    reti          ;
    ;-----
    ;   LCD Service Process for 6. frame
    ;-----
COM32:
    mov a,P5      ;invert S0(2) - S7(2)
    xor a,#0FFh ;
    mov P5,a      ;
    movlcy,P6.7 ;invert S8(2)
    notlcy        ;
    movlP6.7,cy ;
    setlP6.6      ;COM3 to VDD
    ;-----
    ; prepare LCD Service Process for 1. frame
    ;-----
    movwax,#COM11;
    reti          ;

end

```

4.2 Circuit Diagram for the Example Program

	Datum / Zeit	Name		 NEC Electronics (Europe) GmbH Technical Product Support European Application Division Oberrather Str. 4 D-40472 Duesseldorf, Germany	
Bearb.	26.01.1996 18:07:20	Dipl.-Ing. Ludger Lenzen			
Plot	26.01.1996 18:15:06	Dipl.-Ing. Ludger Lenzen			
Rev.	Änderungs-Nr.	Tag	Name		
			zu Gerät:	Zeichnungs-Nr.	Blatt
			DEMO	TPS-9601-0101	1/1
			zu Anlage:	Benennung	
			7801x	Triplex LCD C/D	

[MEMO]

Facsimile Message

From:

Name

Company

Tel.

FAX

Address

Although NEC has taken all possible steps to ensure that the documentation supplied to our customers is complete, bug free and up-to-date, we readily accept that errors may occur. Despite all the care and precautions we've taken, you may encounter problems in the documentation. Please complete this form whenever you'd like to report errors or suggest improvements to us.

Thank you for your kind support.

North America

NEC Electronics America Inc.
Corporate Communications Dept.
Fax: 1-800-729-9288
1-408-588-6130

Hong Kong, Philippines, Oceania

NEC Electronics Hong Kong Ltd.
Fax: +852-2886-9022/9044

Asian Nations except Philippines

NEC Electronics Singapore Pte. Ltd.
Fax: +65-6250-3583

Europe

NEC Electronics (Europe) GmbH
Market Communication Dept.
Fax: +49(0)-211-6503-1344

Korea

NEC Electronics Hong Kong Ltd.
Seoul Branch
Fax: 02-528-4411

Japan

NEC Semiconductor Technical Hotline
Fax: +81- 44-435-9608

Taiwan

NEC Electronics Taiwan Ltd.
Fax: 02-2719-5951

I would like to report the following error/make the following suggestion:

Document title: _____

Document number: _____ Page number: _____

If possible, please fax the referenced page or drawing.

Document Rating	Excellent	Good	Acceptable	Poor
Clarity	<input type="checkbox"/>	<input type="checkbox"/>	<input type="checkbox"/>	<input type="checkbox"/>
Technical Accuracy	<input type="checkbox"/>	<input type="checkbox"/>	<input type="checkbox"/>	<input type="checkbox"/>
Organization	<input type="checkbox"/>	<input type="checkbox"/>	<input type="checkbox"/>	<input type="checkbox"/>

[MEMO]