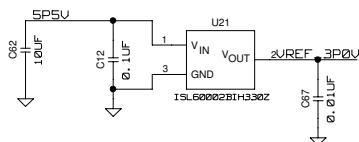
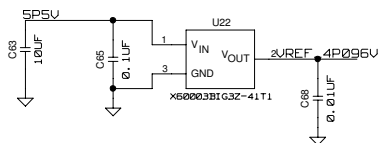




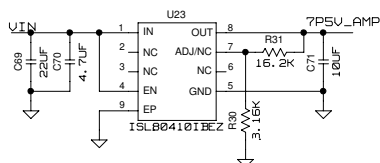
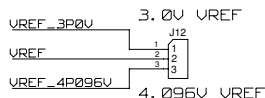
# AMP POWER SUPPLY AND VREF CIRCUITRY



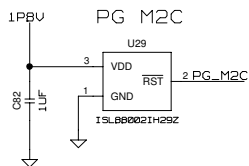
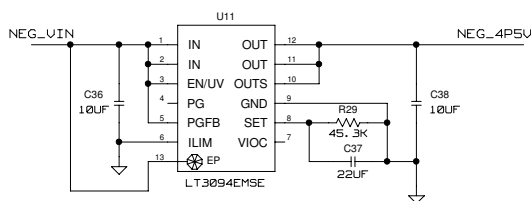
3.0V REFERENCE



4.096V REFERENCE



+7.5V/-4.5V SUPPLIES FOR AMPLIFIERS

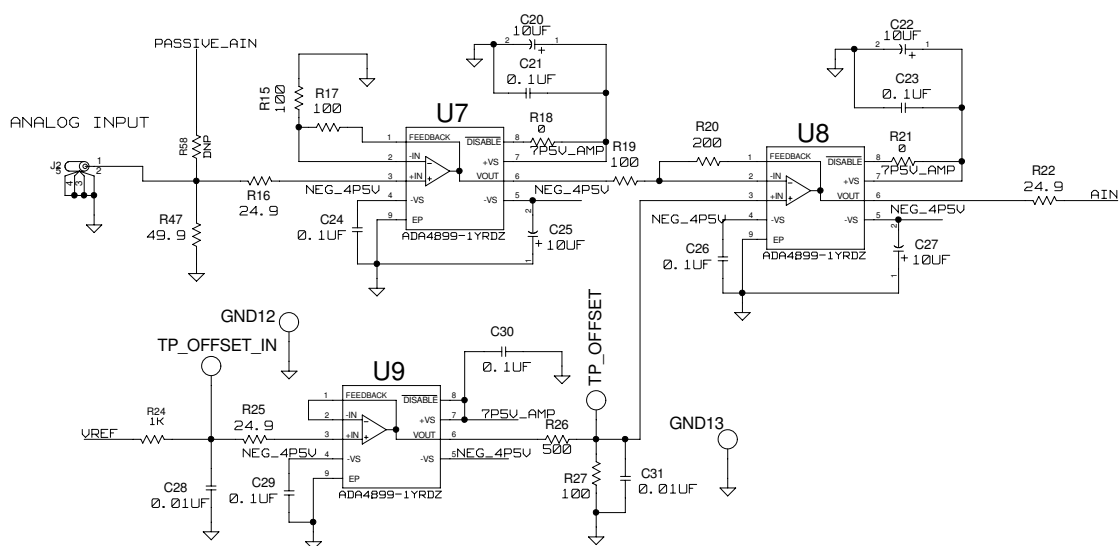


THIS DOCUMENT CONTAINS TECHNICAL DATA, EXPORT OF WHICH IS RESTRICTED BY THE U.S. EXPORT ADMINISTRATION REGULATIONS (EAR). DISCLOSURE TO FOREIGN PERSONS WITHOUT PRIOR U.S. GOVERNMENT APPROVAL IS PROHIBITED. VIOLATIONS OF THESE EXPORT LAWS AND REGULATIONS ARE SUBJECT TO SEVERE CIVIL AND CRIMINAL PENALTIES.

## PASSIVE AIN, CLOCK, AND ADC CIRCUITRY



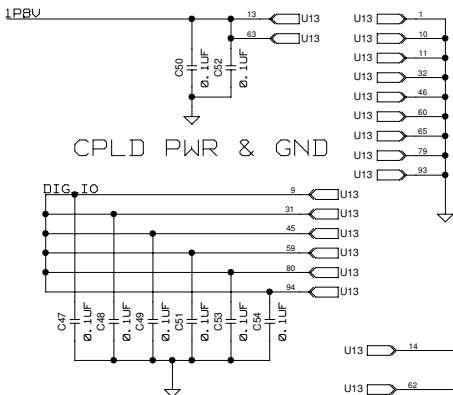
# ANALOG INPUT AMPLIFIER CIRCUITRY



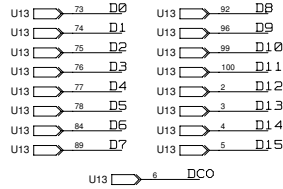
THIS DOCUMENT CONTAINS TECHNICAL DATA, EXPORT OF WHICH IS RESTRICTED BY THE U.S. EXPORT ADMINISTRATION REGULATIONS (EAR). DISCLOSURE TO FOREIGN PERSONS WITHOUT PRIOR U.S. GOVERNMENT APPROVAL IS PROHIBITED. VIOLATIONS OF THESE EXPORT LAWS AND REGULATIONS ARE SUBJECT TO SEVERE CIVIL AND CRIMINAL PENALTIES.

HRDWR ID: ISL73141SEHEV1Z REV. B SHEET 4 OF 5

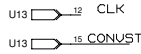
# CPLD AND BOARD CONNECTORS CIRCUITRY



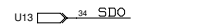
## CPLD PARALLEL DATA & CLOCK



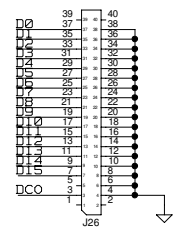
## CPLD CLOCKS



## SERIAL DATA PINS



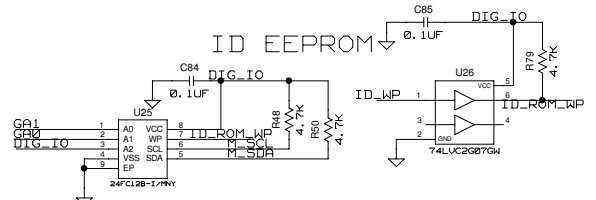
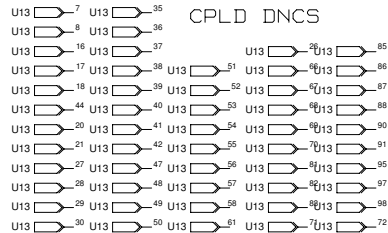
## VERTICAL MOUNT PARALLEL CONNECTOR



## GPIO PINS

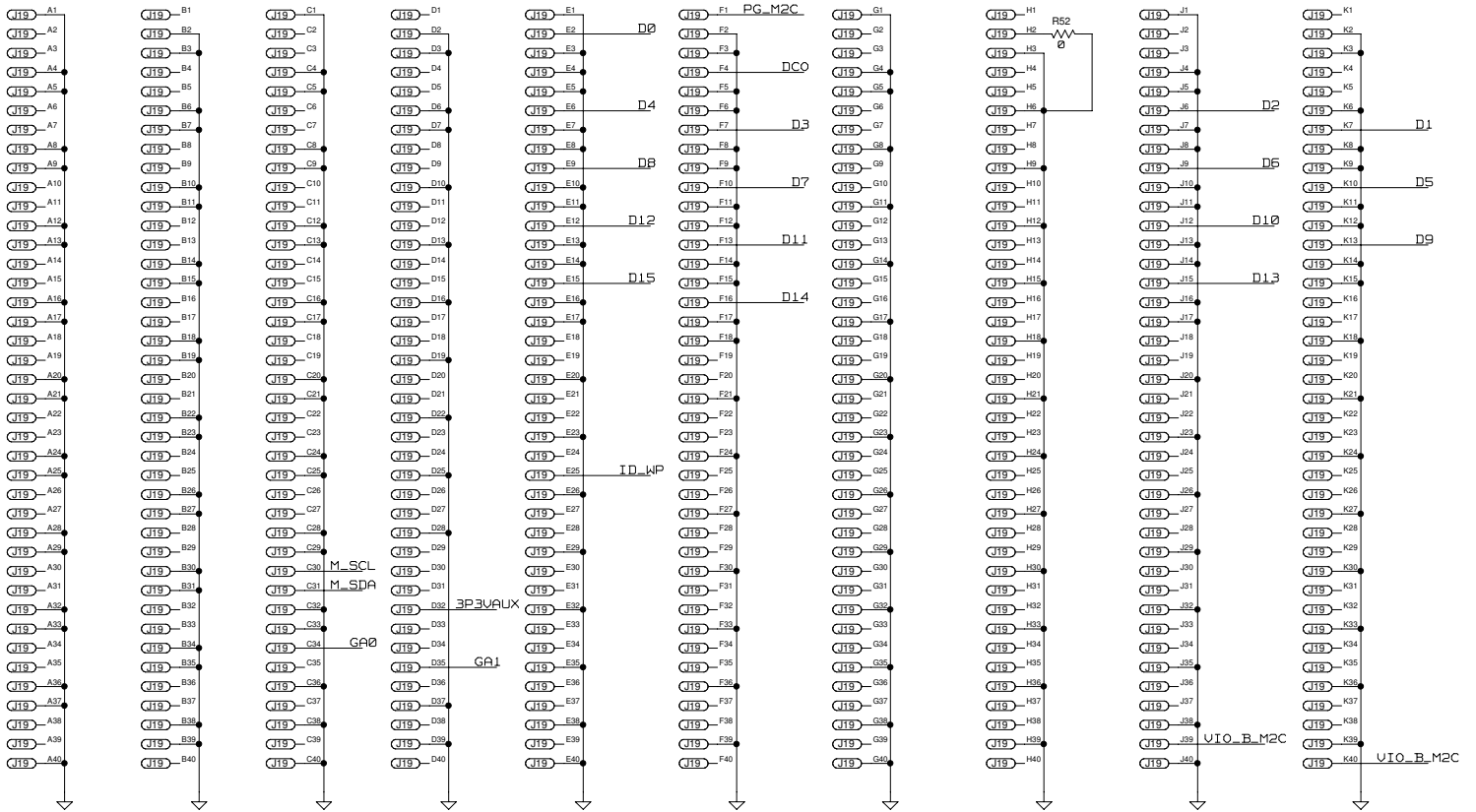


## CPLD DNCS



THIS DOCUMENT CONTAINS TECHNICAL DATA, EXPORT OF WHICH IS RESTRICTED BY THE U.S. EXPORT ADMINISTRATION REGULATIONS (EAR). DISCLOSURE TO FOREIGN PERSONS WITHOUT PRIOR U.S. GOVERNMENT APPROVAL IS PROHIBITED. VIOLATIONS OF THESE EXPORT LAWS AND REGULATIONS ARE SUBJECT TO SEVERE CIVIL AND CRIMINAL PENALTIES.

# FMC CONNECTIONS



FMC CONNECTOR MOUNTED ON BOTTOM SIDE OF BOARD

THIS DOCUMENT CONTAINS TECHNICAL DATA, EXPORT OF WHICH IS RESTRICTED BY THE U.S. EXPORT ADMINISTRATION REGULATIONS (EAR). DISCLOSURE TO FOREIGN PERSONS WITHOUT PRIOR U.S. GOVERNMENT APPROVAL IS PROHIBITED. VIOLATIONS OF THESE EXPORT LAWS AND REGULATIONS ARE SUBJECT TO SEVERE CIVIL AND CRIMINAL PENALTIES.

HRDWR ID: ISL73141SEHEV1Z REV. B SHEET 5 OF 5