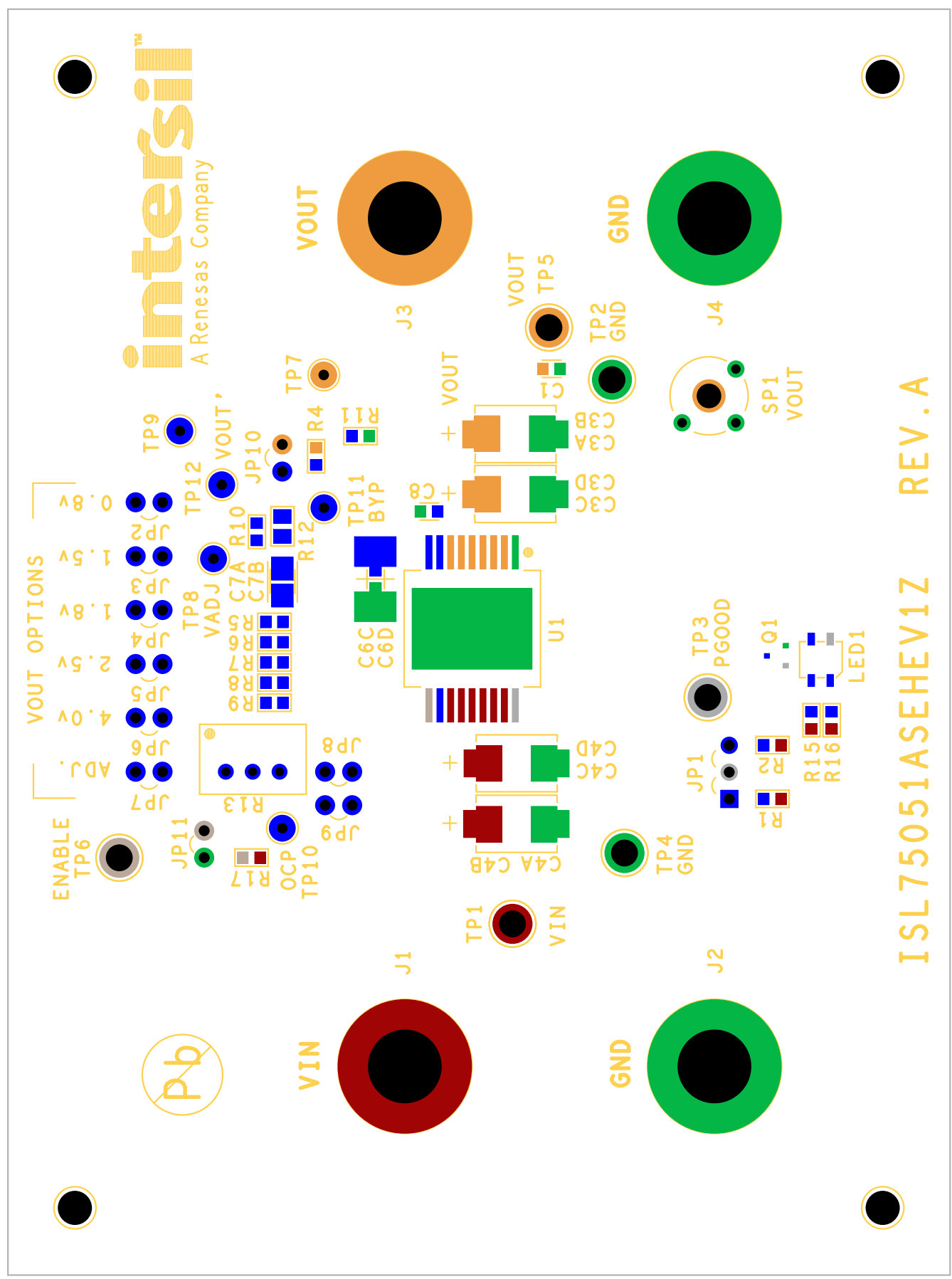


ASSEMBLY TOP

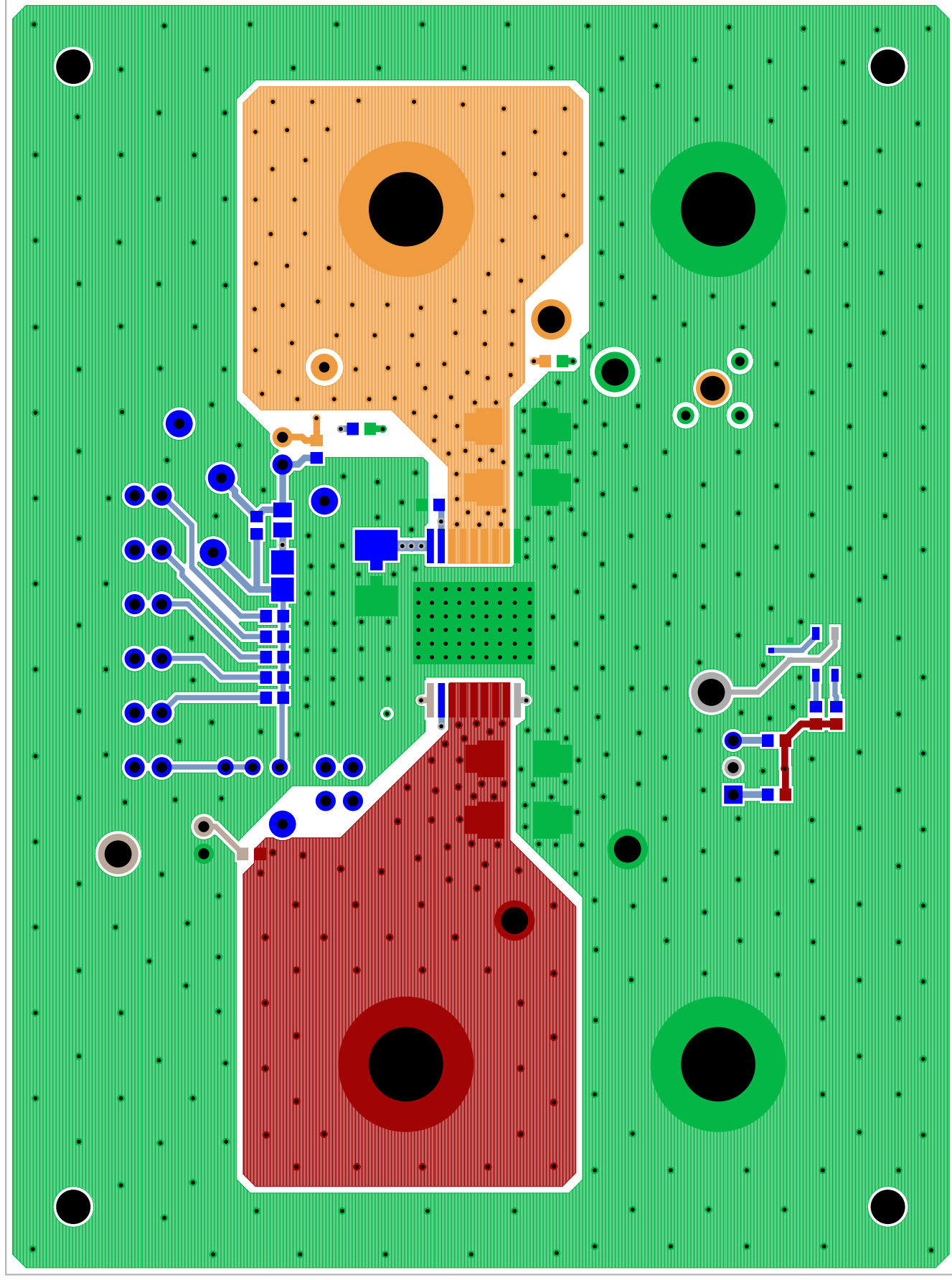
INTERSIL

10-02-2017



ISL75051ASEHEV1Z REV.A

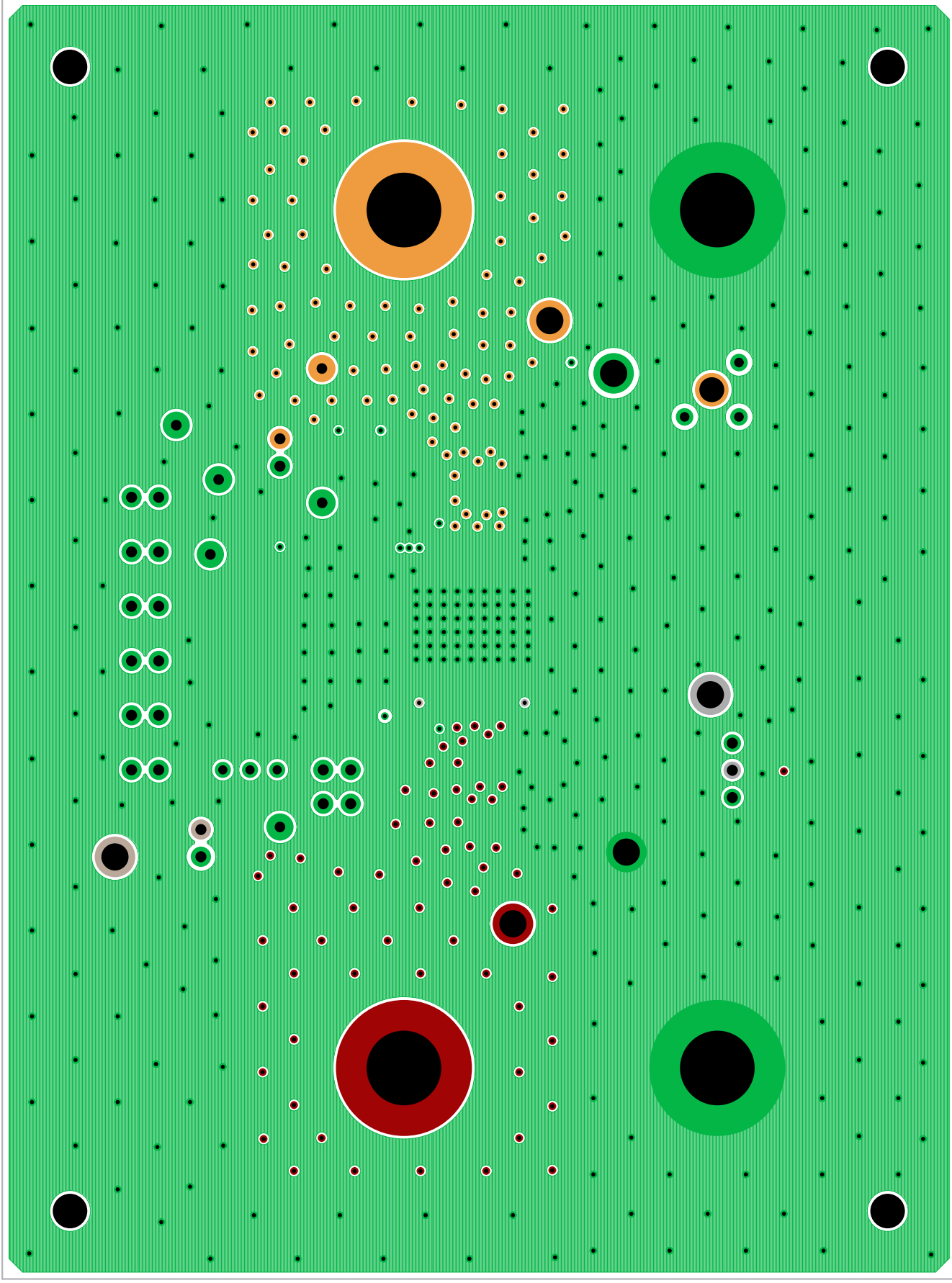
SILK SCREEN TOP

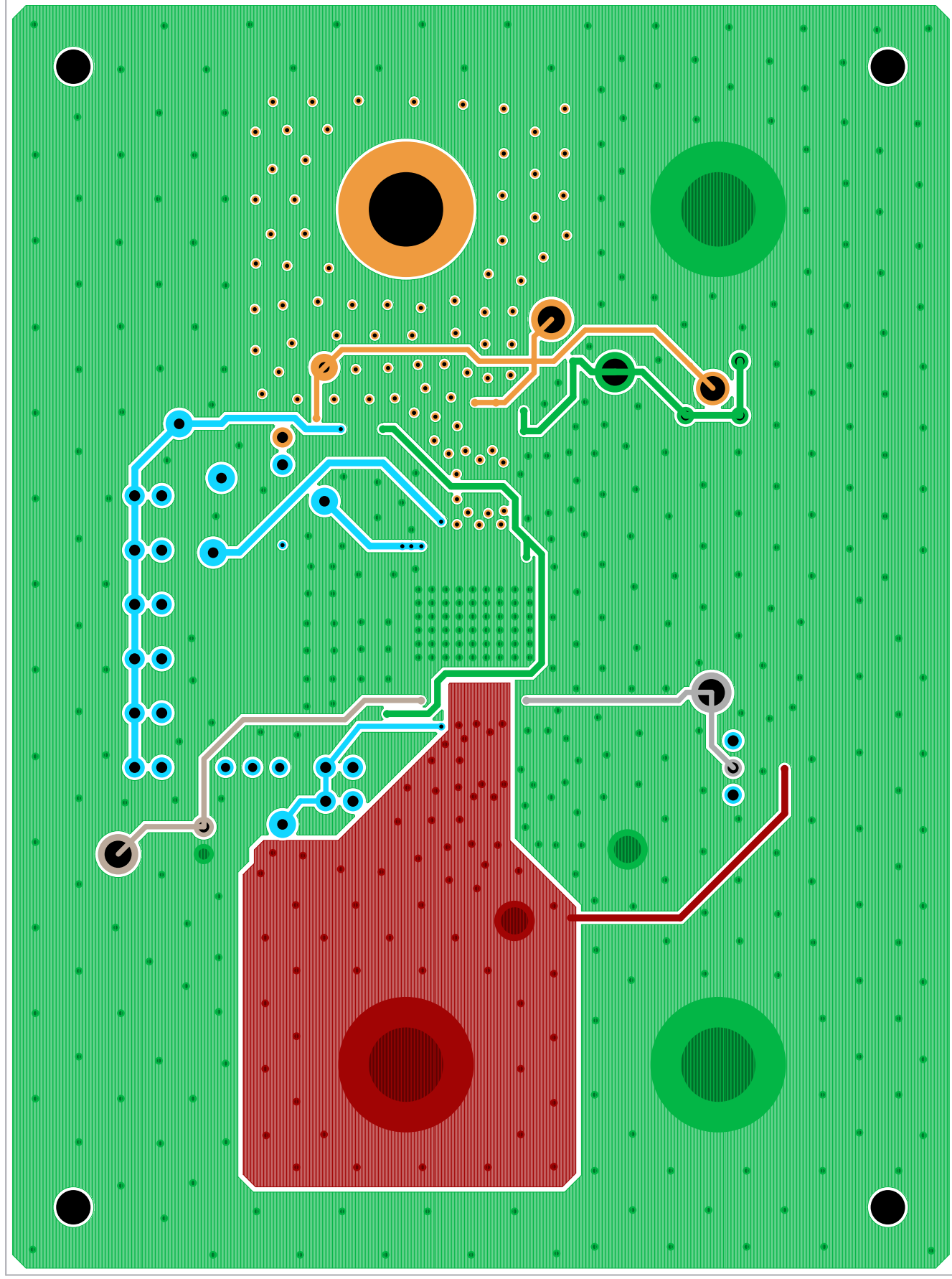


TOP LAYER COMPONENT SIDE

INTERSIL

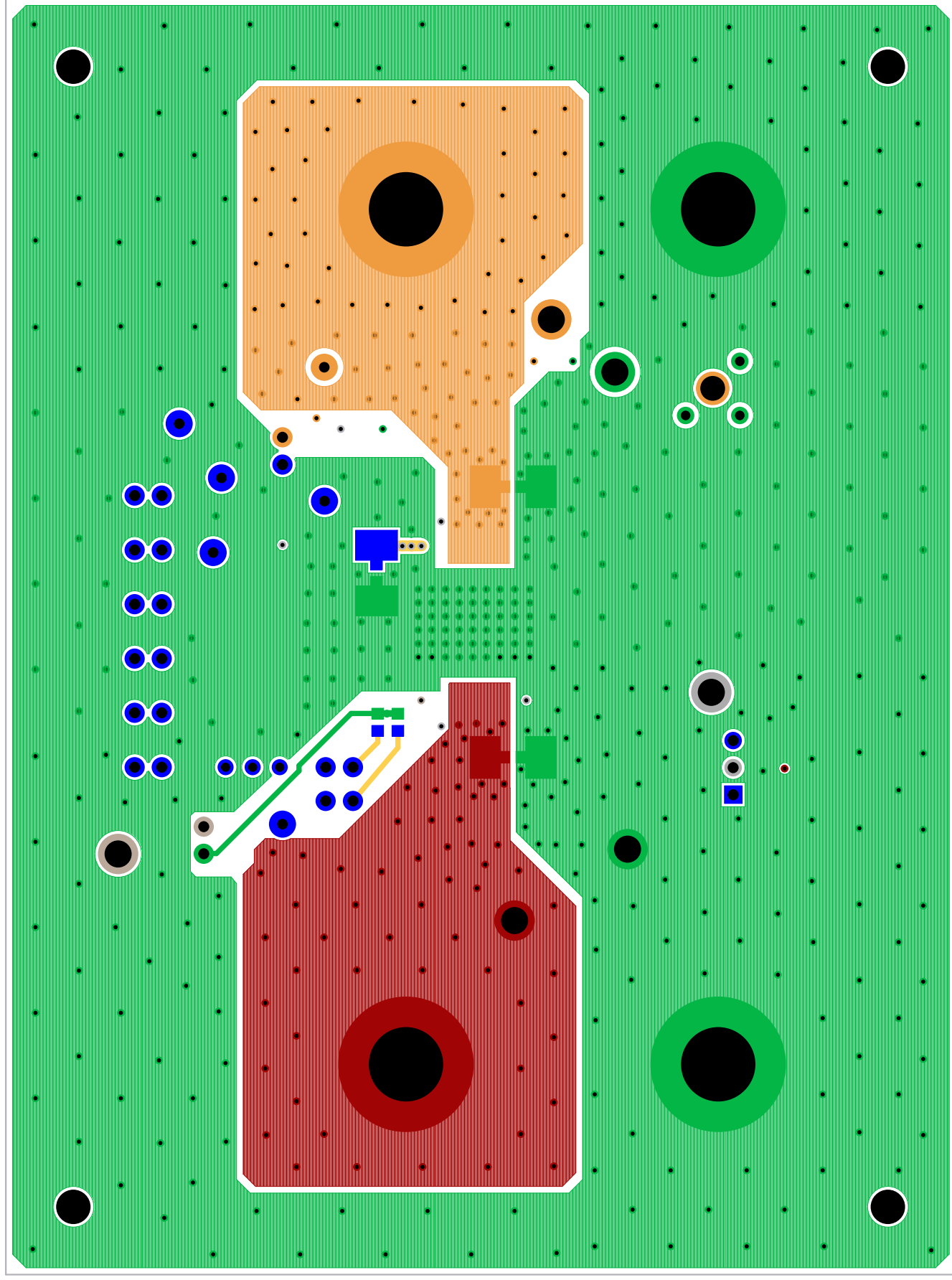
10-02-2017





LAYER 3

INTERSIL
10-02-2017



BOTTOM LAYER SOLDER SIDE

INTERSIL

10-02-2017

SILK SCREEN BOTTOM

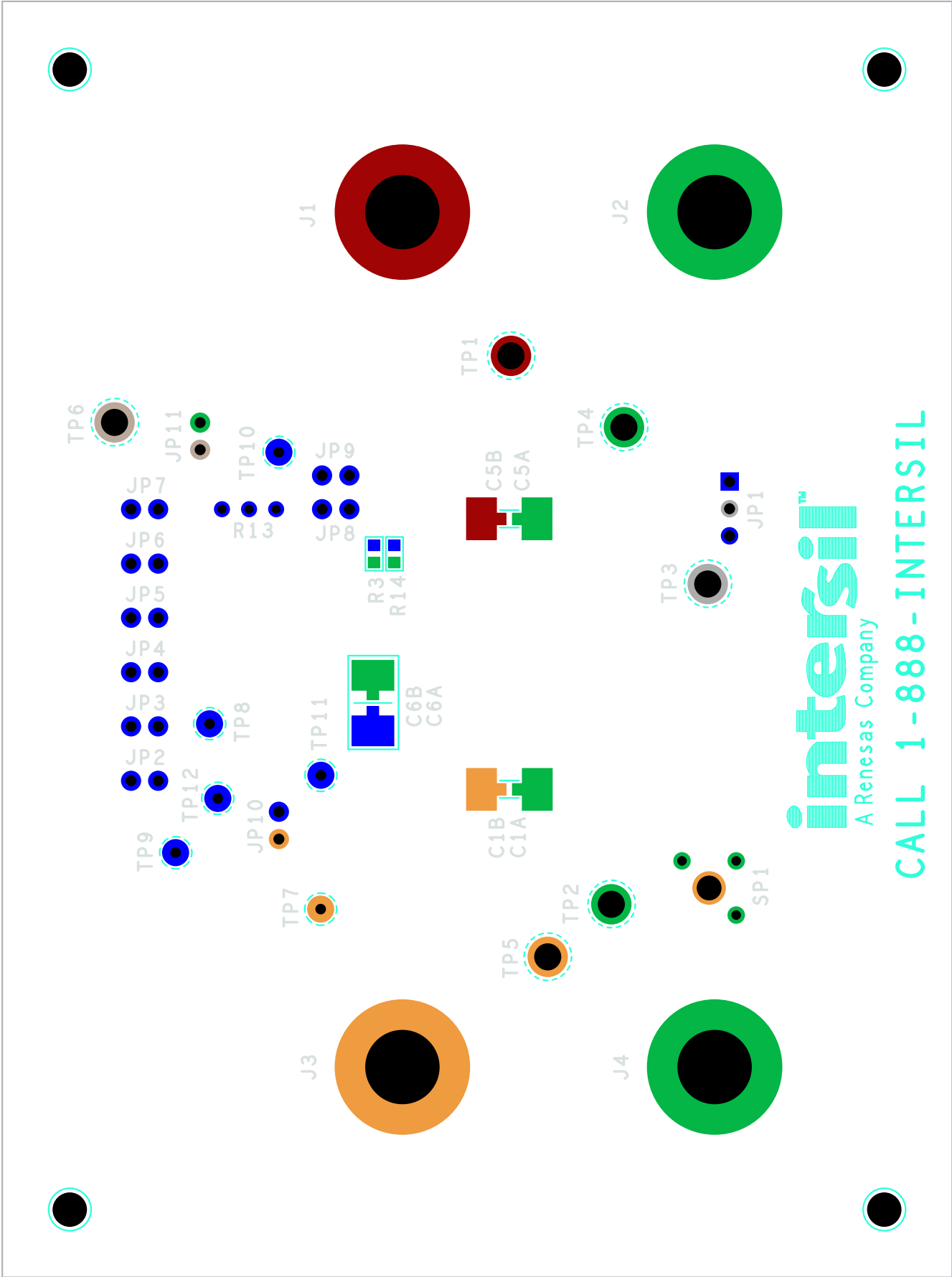
10-02-2017

10-05-501J
INTERSIL

SILK SCREEN BOTTOM

CALL 1-888-INTERSIL

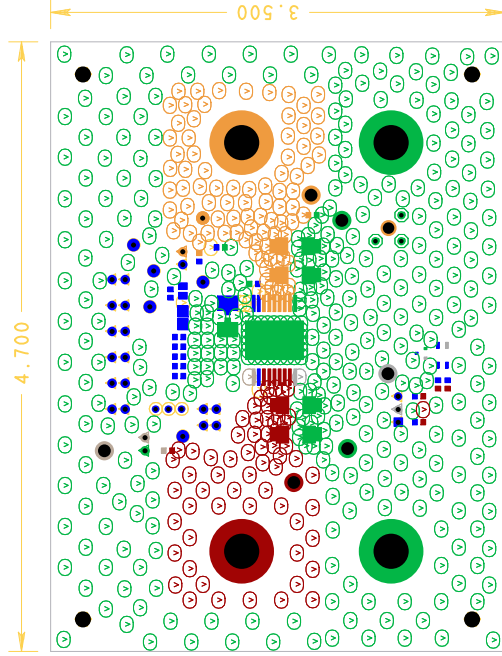
intersil[™]
A Renesas Company



10-05-501J
INTER21F

ASSEMBLY BOTTOM





DRILL

PHYSICAL BOARD DIMENSIONS & LAYER STRUCTURE

NOTES:

1. THIS BOARD IS ROHS COMPLIANT.
2. PRINTED WIRING BOARD DESIGN AND ACCEPTANCE CRITERIA SHALL BE IAW WITH THE REQUIREMENTS OF IPC-D-275 AND IPC-A-600.
3. MATERIAL: FR4 (ROHS COMPLIANT), 1 OZ COPPER.
4. APPLY SOLDER MASK, BOTH SIDES OVER BARE COPPER IAW IPC-SW-840. CLASS 2 (LPT) (INTERSL RED MASK).
5. ALL PATTERNS ARE VIEWED FROM THE PRIMARY SIDE LOOKING THROUGH THE BOARD.
6. UNLESS OTHERWISE SPECIFIED ALL HOLE DIAMETERS ARE AFTER PLATING.
7. APPLY SILKSREEN USING WHITE NON-CONDUCTIVE EPOXY BASED INK.
8. PWB MUST BE 100% ELECTRICALLY TESTED FOR SHORTS AND CONTINUITY.
9. USE NETLIST PROVIDED ISL75051ASEHVEIZA_IPC356 IPC IAW IPC-D-356. MARK DATE CODE AND MANUFACTURES IDENTIFICATION ON SOLDER SIDE PER IPC-6011 AND IPC-6012.
- 10 TOLERANCE ON ALL DRILL HOLES SHALL BE IAW IPC-D-2221 & 2222 UNLESS OTHERWISE SPECIFIED.

DRILL CHART: TOP to BOTTOM				
ALL UNITS ARE IN MILS				
FIGURE	SIZE	PLATED	QTY	
①	16.0	PLATED	547	
②	35.0	PLATED	3	
③	37.0	PLATED	3	
④	40.0	PLATED	6	
⑤	41.0	PLATED	23	
⑥	93.0	PLATED	1	
⑦	100.0	PLATED	6	
⑧	275.0	PLATED	4	
⑨	128.0	NON-PLATED	4	

[illegible]

REVISIONS			
REV	DESCRIPTION	DATE	APPROVED