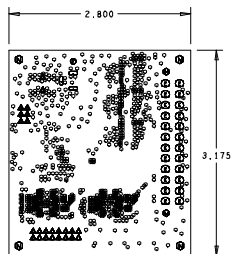


ADJUST CENTER CORE TO ACHIVE BOARD THICKNESS

6 LAYER STACKING

SCALE: NONE



DRILL CHART: TOP to BOTTOM			
ALL UNITS ARE IN MILS			
FIGURE	SIZE	PLATED	QTY
•	6.0	PLATED	242
•	8.0	PLATED	760
▲	41.0	PLATED	22
▲	52.0	PLATED	2
⊖	55.0	PLATED	24
⊖	86.614	PLATED	1
⊖	118.0	NON-PLATED	2
⊖	128.0	NON-PLATED	4
⊖	123.0x43.0	PLATED	1
⊖	123.0x43.0	PLATED	1
⊖	141.0x43.0	PLATED	1

NOTES: UNLESS OTHERWISE SPECIFIED.

- BOARD IS VIEWED FROM LAYER 1 (PRIMARY SIDE). TOTAL CONDUCTOR LAYERS ARE 6.
- THIS DRAWING ALSO EXISTS ON ELECTRONIC MEDIA.
- MANUFACTURE/FABRICATE TO MEET EU RoHS DIRECTIVE.  
ALL MATERIALS AND SOLDERMASK TO BE COMPLIANT TO EU RoHS DIRECTIVE 20002/95/EC  
LAMINATE AND RESIN MATERIAL PARAMETERS  
Tg > 170 C  
Td > 294 C
- FINISH:  
ELECTROPLISS NICKEL/GOLD(ENIG)PLATING IS TO BE USED. 3-8 uin GOLD OVER 100uin NICKEL.
- SOLDERMASK SHALL BE LPI(BLUE)OVER BARE COPPER, 0.0005"-0.002" THICK, AND CONFORM TO THE LATEST REVISION OF IPC-SM-840.
- CONDUCTOR WIDTH AND SPACING:  
THE NOMINAL CONDUCTOR WIDTH AND SPACING ON FINISHED BOARD IS:  
WIDTH 0.008"  
SPACING 0.005"
- SILKSCREEN SHALL BE WHITE NONCONDUCTIVE EPOXY INK, AND SHALL NOT APPEAR ON ANY PADS OR MOUNTING HOLES.
- PRIOR TO BOARD FABRICATION, COMPARE GERBER DATA TO SUPPLIED IPC-D-356A NET LIST, REPORT ALL DISCREPANCIES.

Drawn By:	Date Drawn:	Engineer:		
MARGARET SAVIEO	03-18-19	Jinha Choi		
Released By:	Date Released:	XILINX_A7_S7_REF Fabrication Drawing		
Updated By:	Date Updated:			
	06-26-19	ISSUE NO	ISSUE TO	REV.
		N/A	N/A	D
FILENAME:		SHEET		
XILINX_A7_S7_REFD		1		of 1