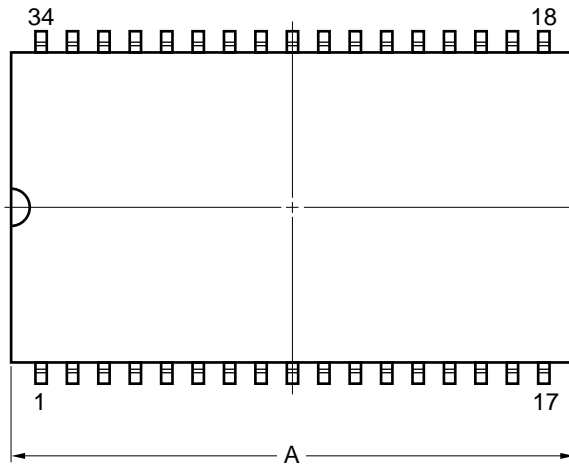
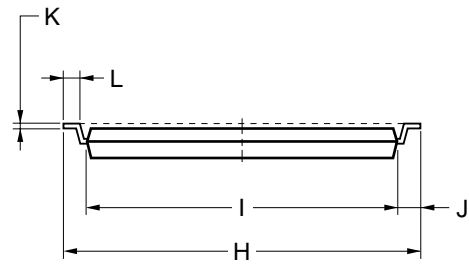
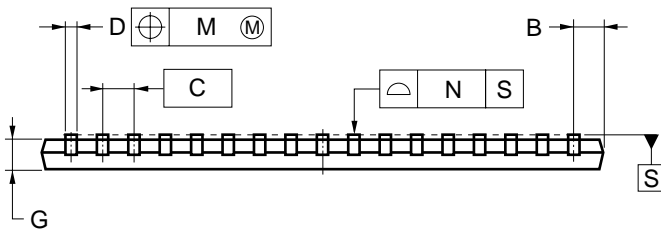
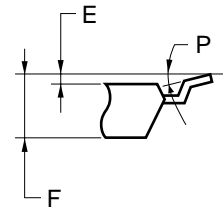


34-PIN PLASTIC TSOP(II) (12.70 mm (500))



detail of lead end



NOTE

Each lead centerline is located within 0.21 mm of its true position (T.P.) at maximum material condition.

| ITEM | MILLIMETERS |
|------|---|
| A | 22.66 MAX. |
| B | 1.2 MAX. |
| C | 1.27 (T.P.) |
| D | 0.40±0.10 |
| E | 0.05±0.05 |
| F | 1.1 MAX. |
| G | 0.97 |
| H | 14.3±0.2 |
| I | 12.7±0.1 |
| J | 0.8±0.2 |
| K | 0.125 ^{+0.10} _{-0.05} |
| L | 0.5±0.1 |
| M | 0.21 |
| N | 0.10 |
| P | 3° ^{+7°} _{-3°} |

S34G7-50-7KD-1