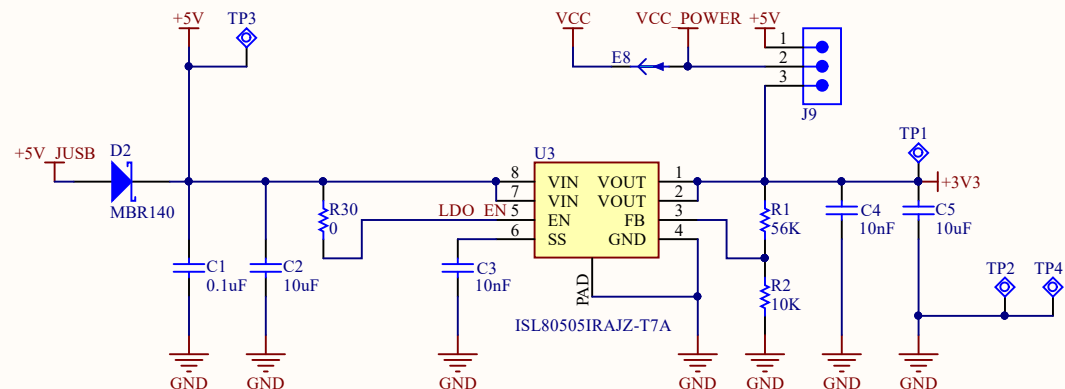
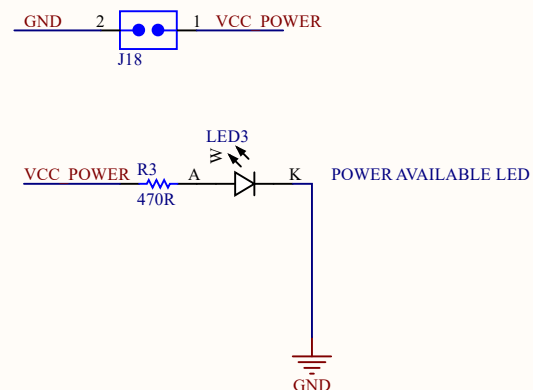


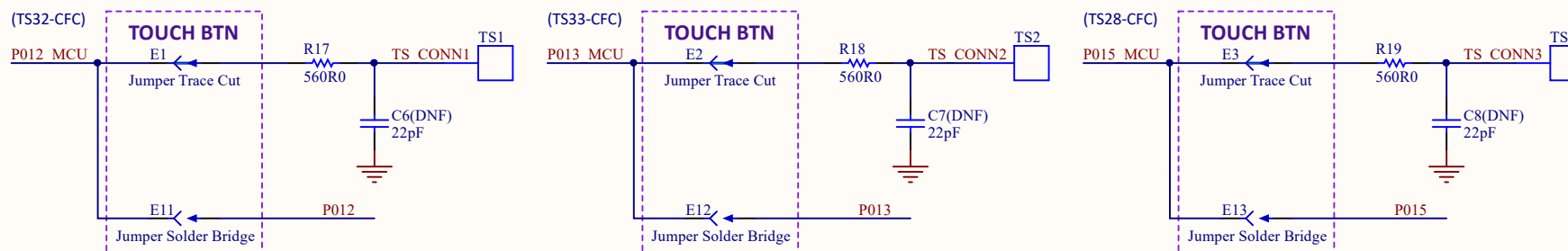
3.3V LINEAR REGULATOR



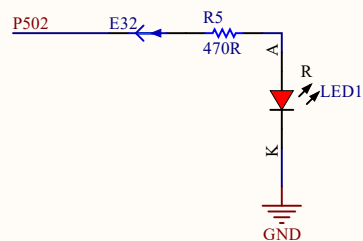
EXTERNAL POWER



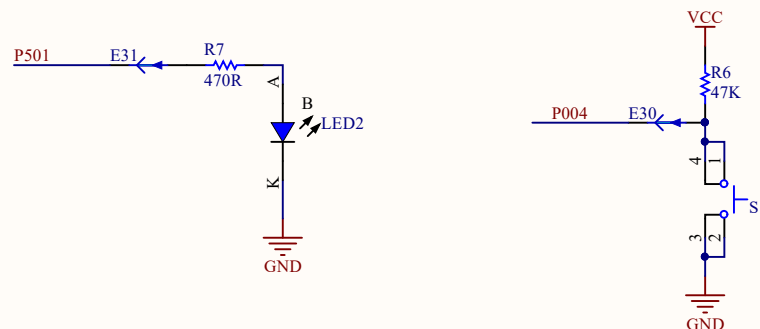
CAPACITIVE TOUCH BUTTON



USER LED



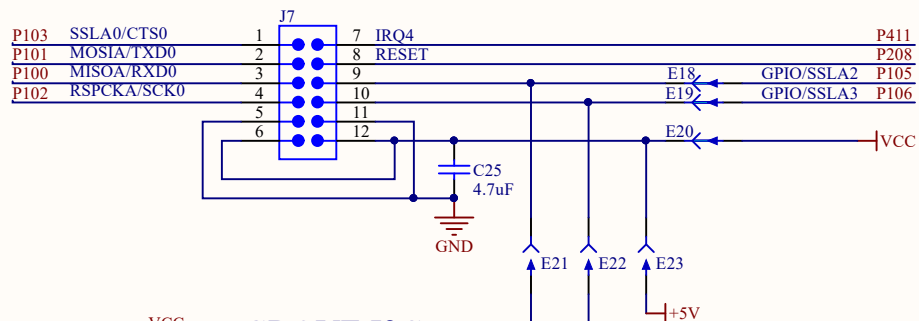
USER PUSH-BUTTON



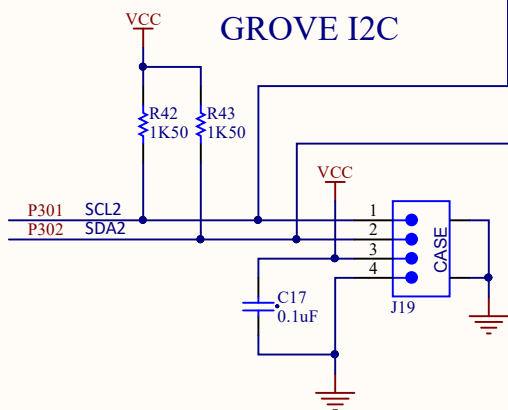
NOTE:
C6, C7 and C8 IS OPTIONAL TO REDUCE THE SENSITIVITY OF THE CAPACITIVE TOUCH BUTTON SINCE A RECOMMENDED DIELECTRIC COVER IS NOT USED WITH THE ASSEMBLY. IT IS NOT REQUIRED BY THE MCU SPECIFICATION.

Title		
Size	Number	Revision
A4		
Date:	2021/10/8	Sheet of
File:	D:\21K\RA 64pin Local Promotion Board\2.5VhDoc	Board 2.5VhDoc

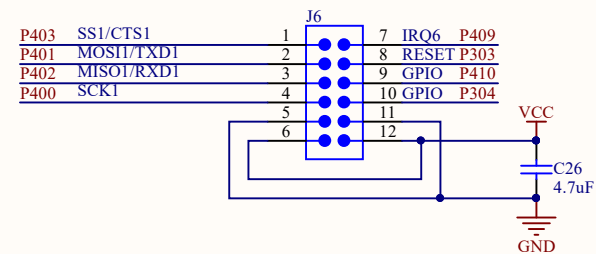
PMODA



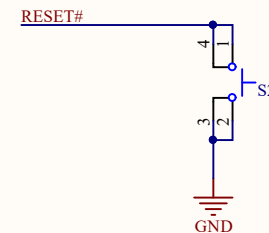
GROVE I2C



PMODB

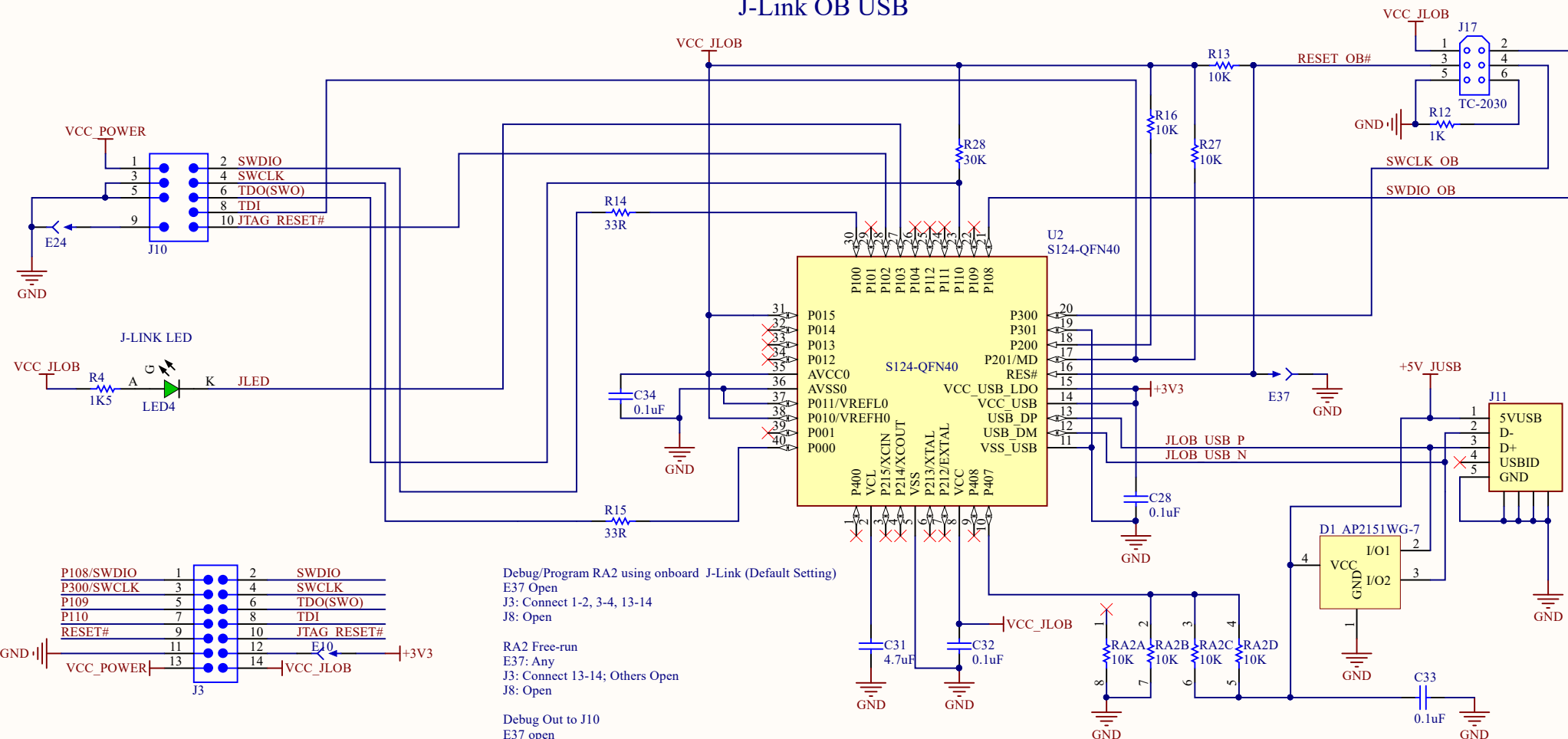


RESET PUSH-BUTTON



Title		
Size	Number	Revision
A4		
Date:	2021/10/8	Sheet of
File:	D:\21K\RA 64pin Local Promotion Board BschDoc	

J-Link OB USB

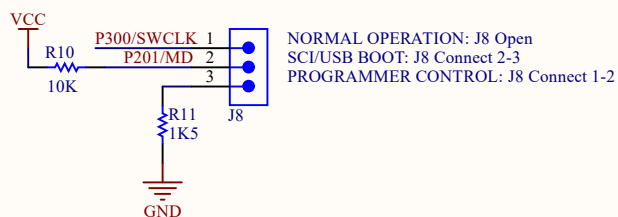


Debug/Program RA2 using onboard J-Link (Default Setting)

J3: Connect 1-2, 3-4, 13-14
J8: Open

RA2 Free-run
E37: Any
J3: Connect 13-14; Others Open
J8: Open

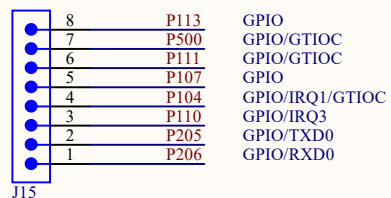
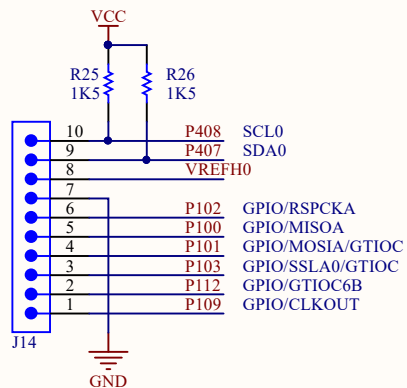
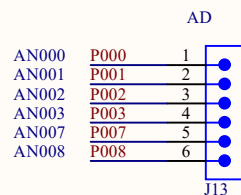
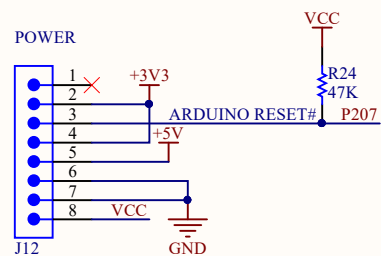
Debug Out to J10
E37 open
J3: Connect 13-14 (9-11 optional); Others Open
J8: Open



MCU MODE CONFIG

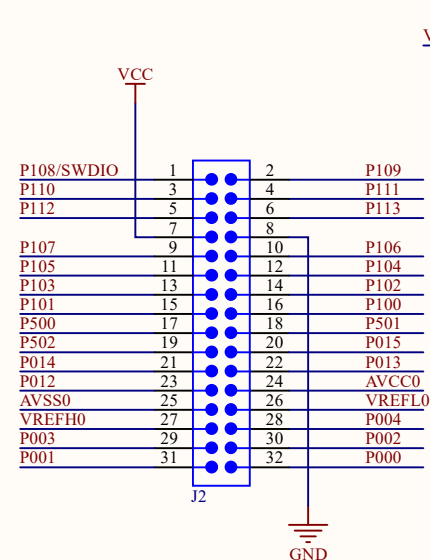
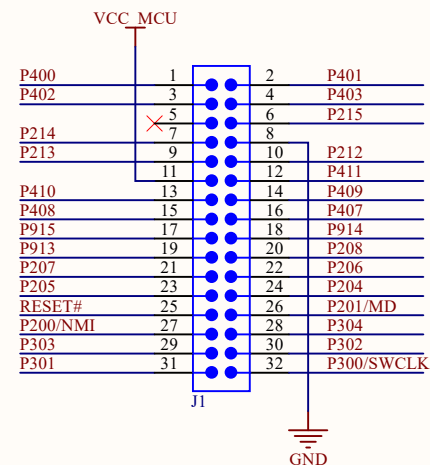
Title		
Size A4	Number	Revision
Date:	2021/10/8	Sheet of
File:	D:\21K\RA 64pin Local Promotion Board\RevDoc	

Arduino



NOTE:
In the case of non-5V, 3.3V power supply, please pay attention to the power supply of the Arduino interface.

PIN HEADERS



Title		
Size	Number	Revision
A4		
Date:	2021/10/8	Sheet of
File:	D:\21K\RA 64pin Local Promotion Board	Doc