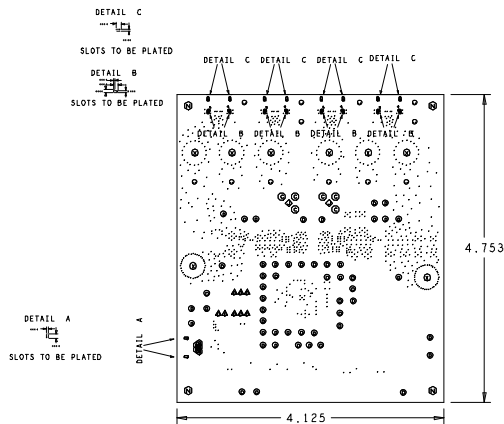


# NOTES:

- THIS IS A 4 LAYER BOARD WITH COMPONENTS ON BOTH SIDES.
- PRINTED CIRCUIT BOARD SHALL BE 2 OUNCE COPPER.  
BOARD MATERIAL TO BE EXPOXY BASED FR-4.
- SMOBC SOLDERMASK BOTH SIDES USING BLUE RESIST. IAW IPC-SM-840
- SILKSCREEN BOTH SIDE(S) USING WHITE NON CONDUCTIVE EPOXY BASED INK. TRIM ALL SILKSCREEN 4mils FROM BARE COPPER
- MANUFACTURE/FABRICATE TO MEET EU RoHS DIRECTIVE.  
ALL MATERIALS AND SOLDERMASK TO BE COMPLIANT TO EU RoHS DIRECTIVE 20002/95/EC  
LAMINATE AND RESIN MATERIAL PARAMETERS  
T<sub>g</sub> > 170 C  
T<sub>d</sub> > 294 C
- ELECTROLESS NICKEL GOLD OR IMMERSION GOLD BOARD FINISH.
- MINIMUM TRACE WIDTH 8 MILS/ SPACE 6 MILS



DRILL CHART: TOP to BOTTOM				
ALL UNITS ARE IN MILS				
FIGURE	SIZE	TOLERANCE	PLATED	QTY
.	8.0	+0.0/-0.0	PLATED	928
•	28.0	+0.0/-0.0	PLATED	5
⊙	37.0	+0.0/-0.0	PLATED	6
▲	41.0	+0.0/-0.0	PLATED	8
•	43.0	+0.0/-0.0	PLATED	52
•	72.0	+3.941/-3.941	PLATED	12
◆	93.0	+0.0/-0.0	PLATED	2
⊙	155.0	+0.0/-0.0	PLATED	8
•	23.618	+1.969/-1.969	NON-PLATED	4
⊙	128.0	+0.0/-0.0	NON-PLATED	4
•	47.24x27.559	+1.969/-1.969	PLATED	4
•	47.24x27.559	+1.969/-1.969	PLATED	4
•	74.799x23.618	+3.0/-3.0	PLATED	8
•	76.0x28.0	+0.0/-0.0	PLATED	2
•	78.74x27.559	+3.941/-3.941	PLATED	8
•	33.461x19.681	+1.969/-1.969	NON-PLATED	4

Drawn By: MARGARET SAVIED	Date Drawn: 09-30-19	Engineer: Shahriar Nibir
Released By:	Date Released:	RTKA489800DE0000BU Fabrication Drawing
Updated By:	Date Updated: 04-24-19	
	ISSUE IS N/A	REV. A
FILENAME: RTKA489800DE0000BU_REVA	SHEET 1 of 1	