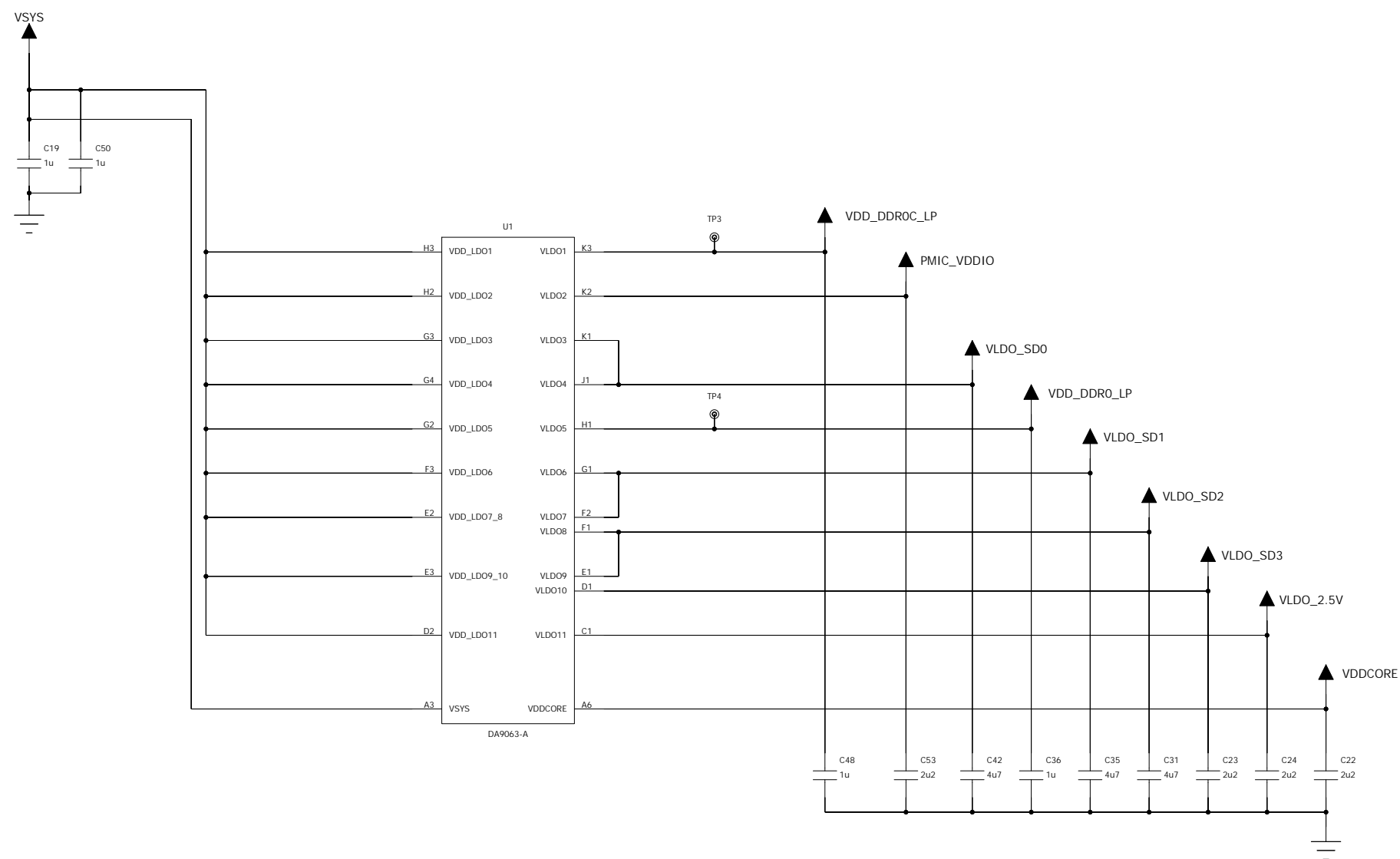


## REVISION TABLE

[illegible]

## MECHANICAL PARTS




VDD\_DDR0C\_LP  
( 1.800V max 100mA )  
0.600V - 1.860V ( 50mV STEP )

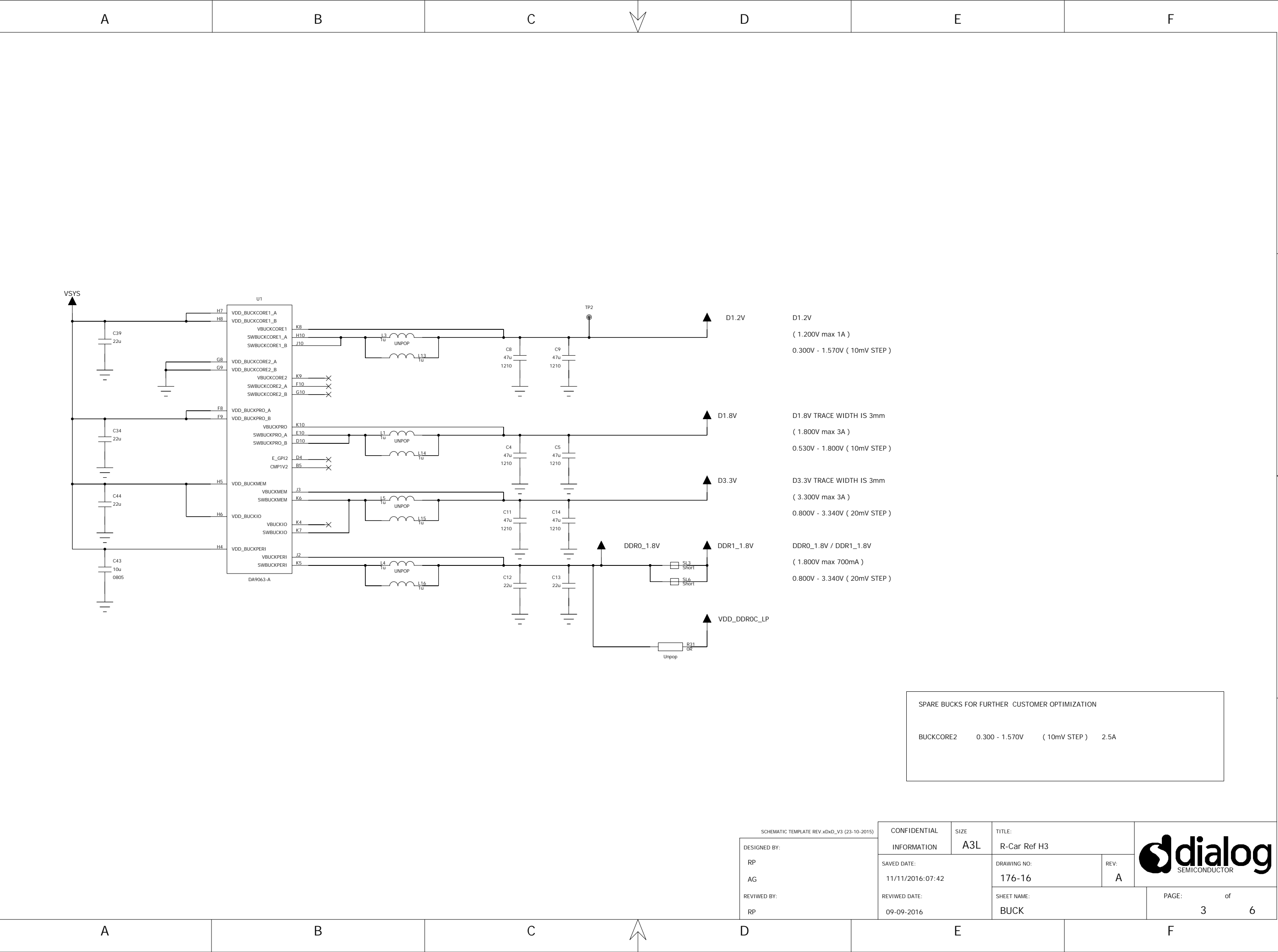
VDD\_DDR0\_LP  
( 1.100V max 100mA )  
0.900V - 3.600V ( 50mV STEP )

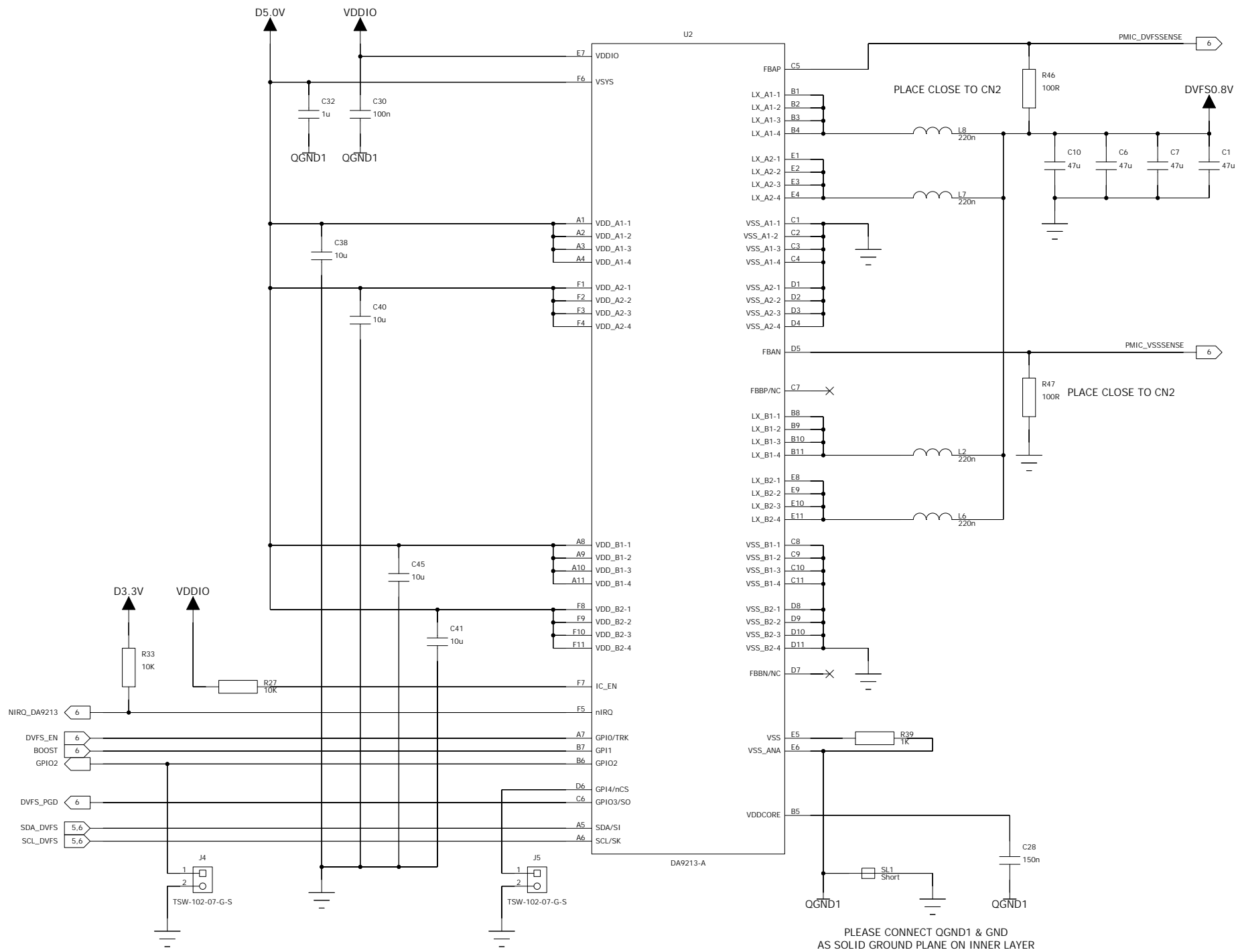
VLDO\_SD0 / VLDO\_SD1 / VLDO\_SD2 / VLDO\_SD3  
( 1.800V / 3.300V max 170mA )  
0.950V - 3.440V ( 50mV STEP )

VLDO\_2.5V  
( 2.500V max 300mA )  
0.900V - 3.500V ( 50mV STEP )


VDDCORE  
( 2.500V )  
For Dialog internal use only

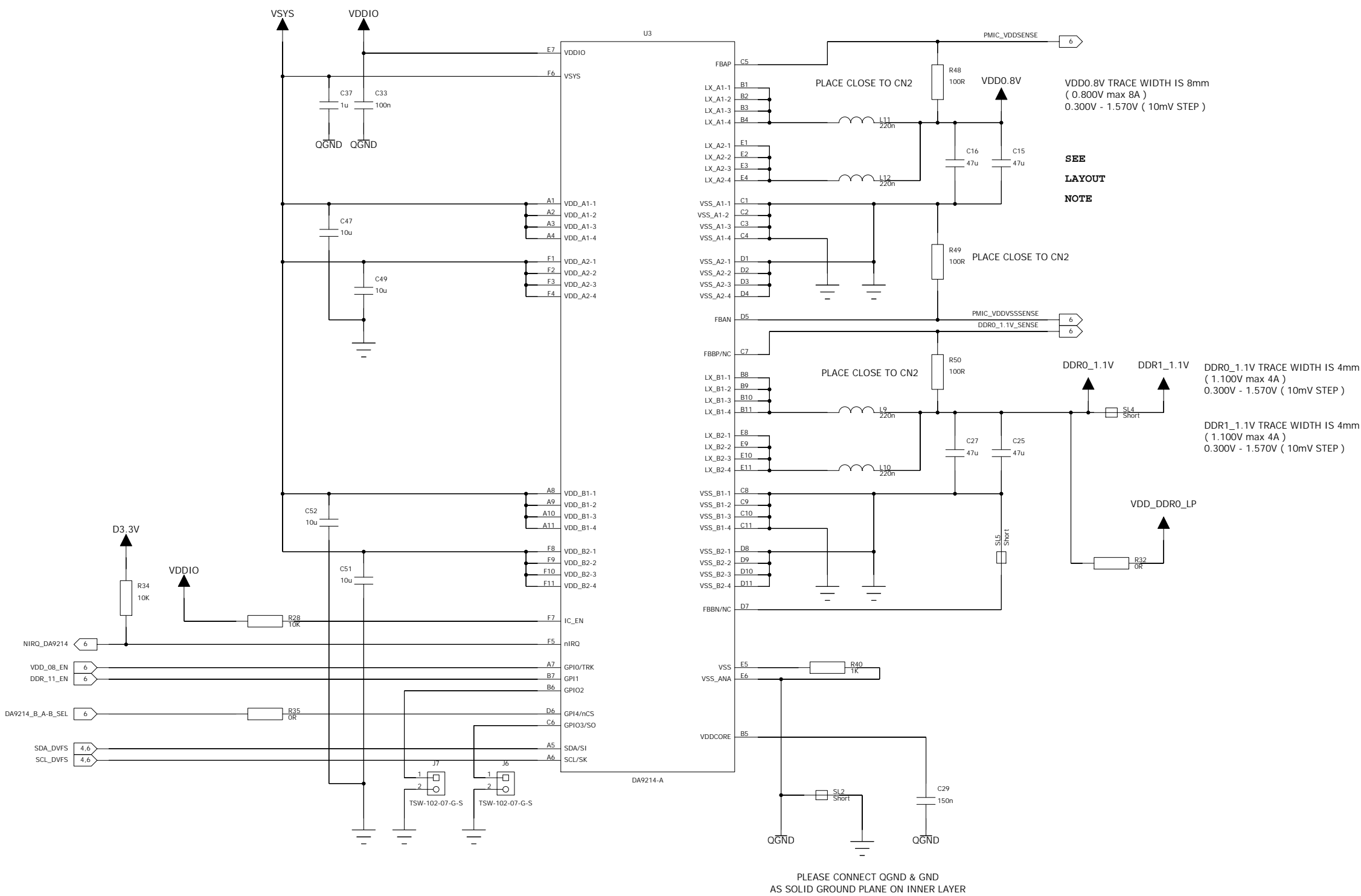
SCHEMATIC TEMPLATE REV.xDxD_V3 (23-10-2015)		CONFIDENTIAL	SIZE	TITLE:		
DESIGNED BY:  RP  AG		INFORMATION	A3L	R-Car Ref H3		
		SAVED DATE:  10/11/2016:14:01		DRAWING NO:  176-16	REV:  A	
REVIWED BY:  RP		REVIWED DATE:  09-09-2016		SHEET NAME:  LDO		PAGE:                      of  2                                      6






DVFS0.8V TRACE WIDTH IS 16mm  
( 0.800V max 16A )  
0.300V - 1.570V ( 10mV STEP )

SCHEMATIC TEMPLATE REV.xDxD_V3 (23-10-2015)		CONFIDENTIAL  INFORMATION	SIZE  A3L	TITLE:  R-Car Ref H3				
DESIGNED BY:  RP  AG				DRAWING NO:  176-16			REV:  A	
REVIEWED BY:  RP		SAVED DATE:  11/11/2016:07:53		SHEET NAME:  DA9213			PAGE:  4	of  6



SCHEMATIC TEMPLATE REV.xDxD_V3 (23-10-2015)		CONFIDENTIAL	SIZE	TITLE:			
DESIGNED BY:		INFORMATION	A3L	R-Car Ref H3			
RP		SAVED DATE:		DRAWING NO:		REV:	<div>PAGE: 5 of 6</div>
AG		11/11/2016:07:54		176-16		A	
REVIWED BY:		REVIWED DATE:		SHEET NAME:			
RP		09-09-2016		DA9214			

1

2

3

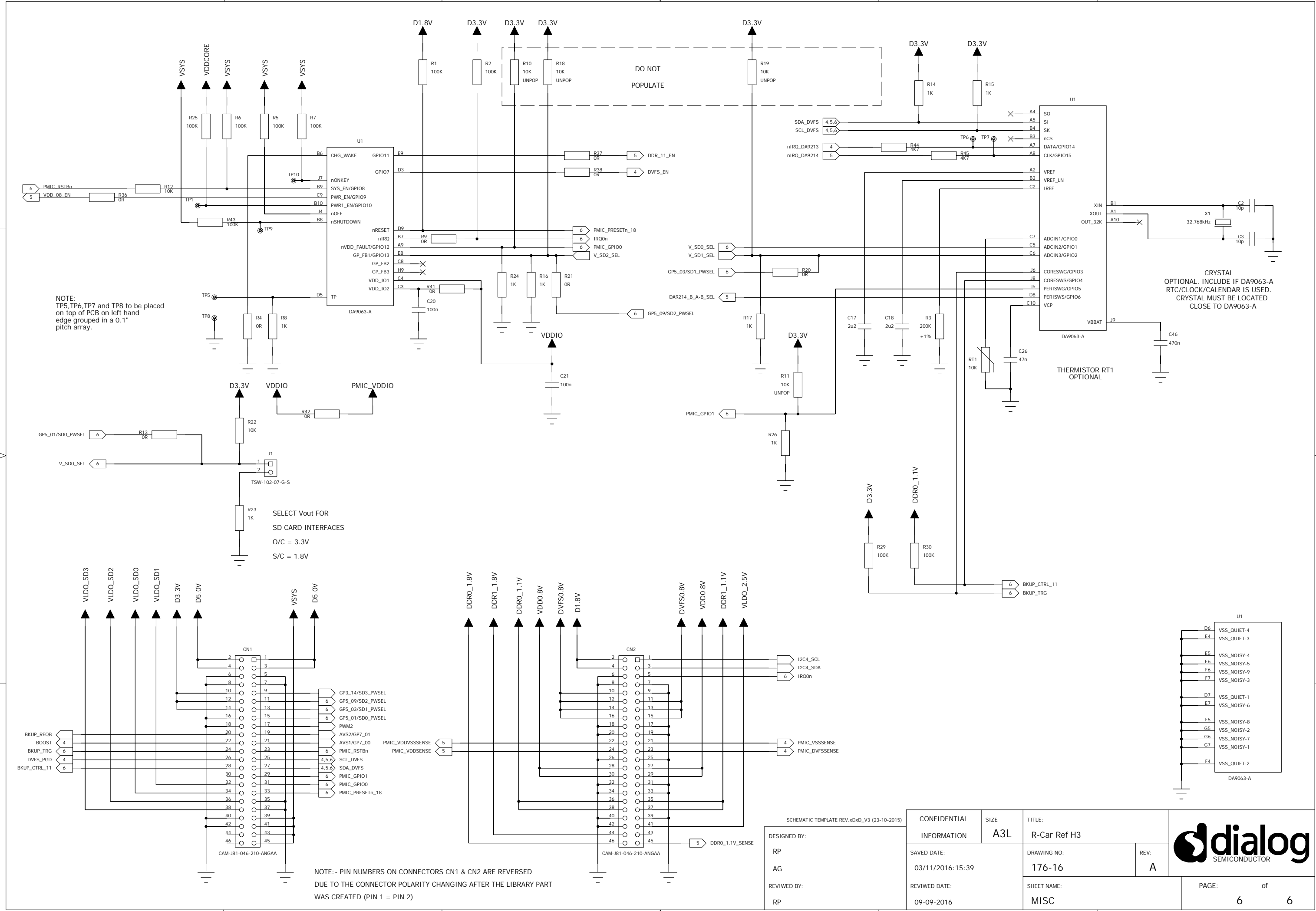
4


1

2

3

4



SCHEMATIC TEMPLATE REV.xDxD_V3 (23-10-2015)		CONFIDENTIAL	SIZE	TITLE:		
DESIGNED BY:		INFORMATION	A3L	R-Car Ref H3		
RP	SAVED DATE:		DRAWING NO:		REV:	
AG	03/11/2016:15:39		176-16		A	
REVIWED BY:		REVIWED DATE:		SHEET NAME:		PAGE: of
RP		09-09-2016		MISC		6 6