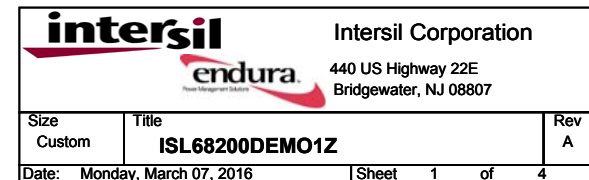
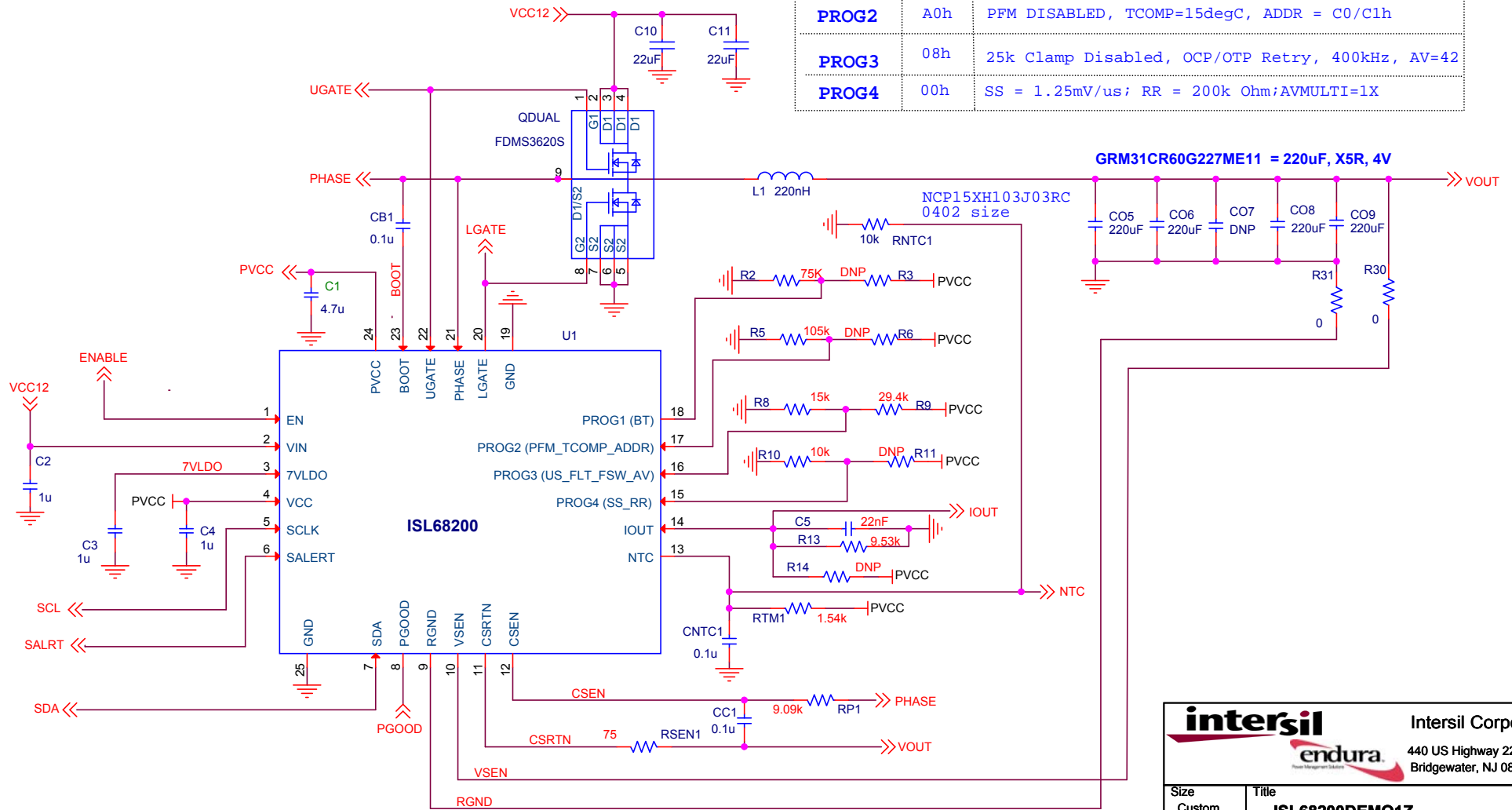
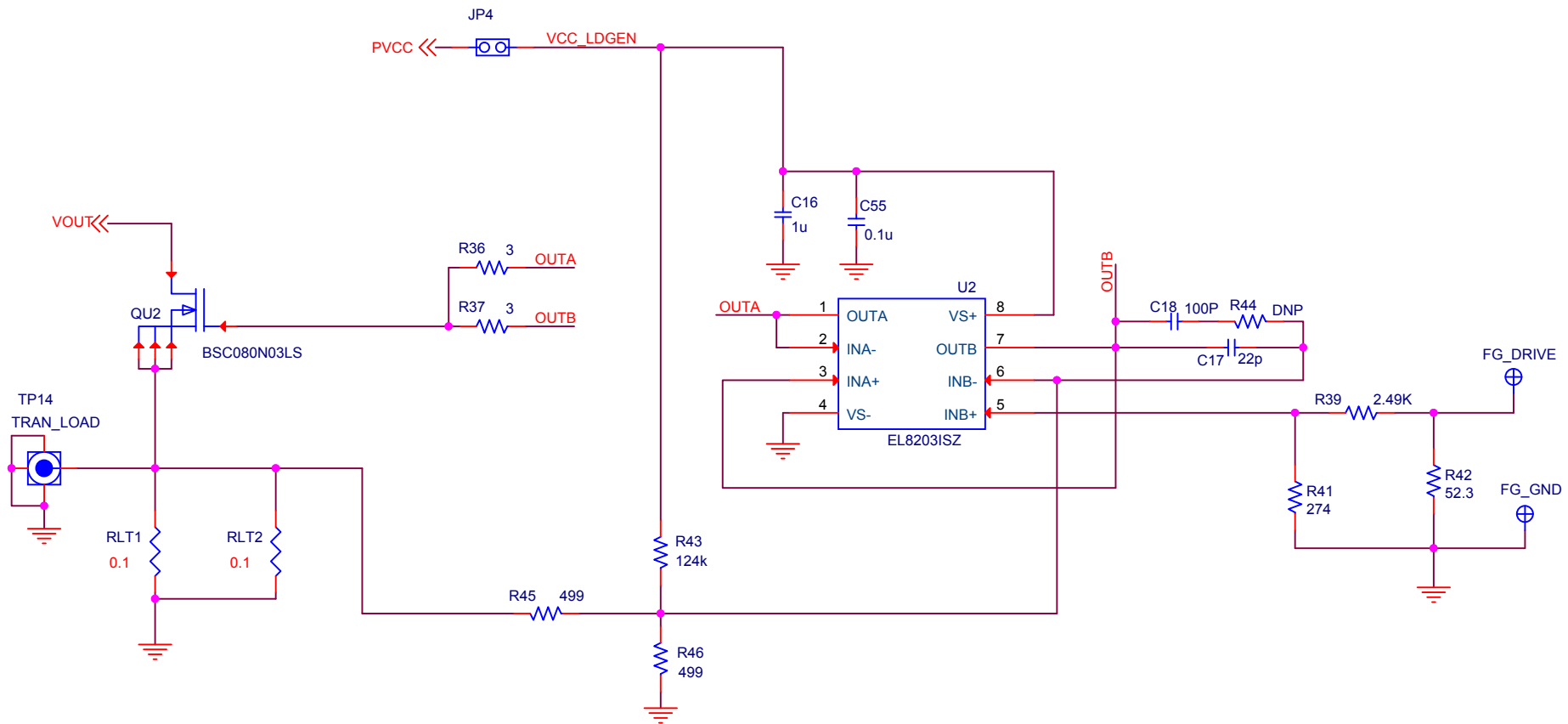


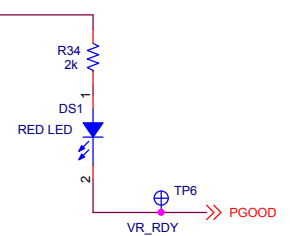
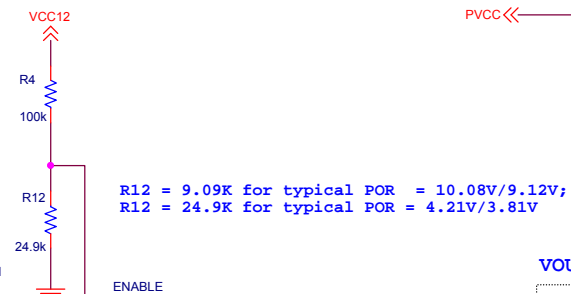
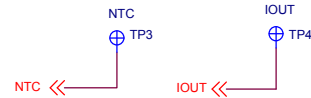
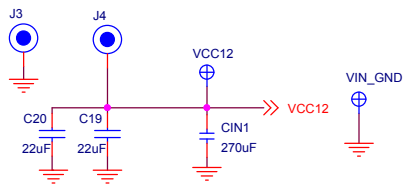
PROG1	80h	BOOT VOTLAGE = 1V
PROG2	A0h	PFM DISABLED, TCOMP=15degC, ADDR = C0/C1h
PROG3	08h	25k Clamp Disabled, OCP/OTP Retry, 400kHz, AV=42
PROG4	00h	SS = 1.25mV/us; RR = 200k Ohm;AVMULTI=1X



On-Board Load Transient

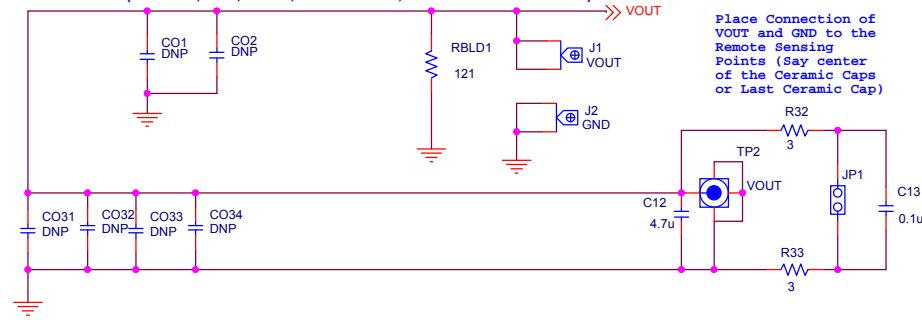
Open Jumper for Efficiency Measurement





6TPF220M5L (POSCAP, 6.3V, 220uF, ESR: 5mOhm, L7.3xW4.3xH3.0mm max)

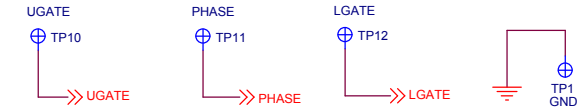
Place Connection of VOUT and GND to the Remote Sensing Points (Say center of the Ceramic Caps or Last Ceramic Cap)



VOUT PGOOD

LED LIGHT	ON	OFF
VOUT STATUS	DOWN	UP

DNP these and leave the holes for probes



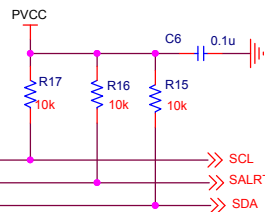
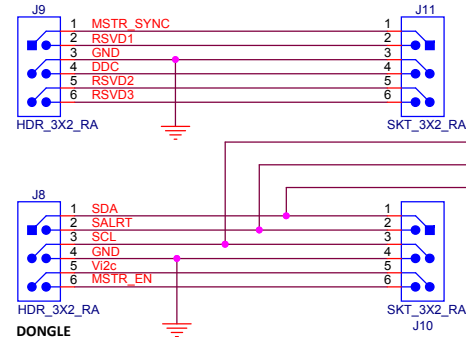
BOARD TO BOARD INTERFACE

ON LEFT OF BOARD (MALE)

ON RIGHT OF BOARD (FEMALE)

FROM PREQUEL

TO SEQUEL



This board only uses SDA, SCL, SALRT, GND signals; Pull-Up Impedance to Be Adjusted for How Many Boards are connected to the Bus

		Intersil Corporation 440 US Highway 22 E Bridgewater, NJ 08807
Size Custom	Title ISL68200DEMO1Z	
Date: Monday, February 08, 2016	Sheet 3 of 4	Rev A