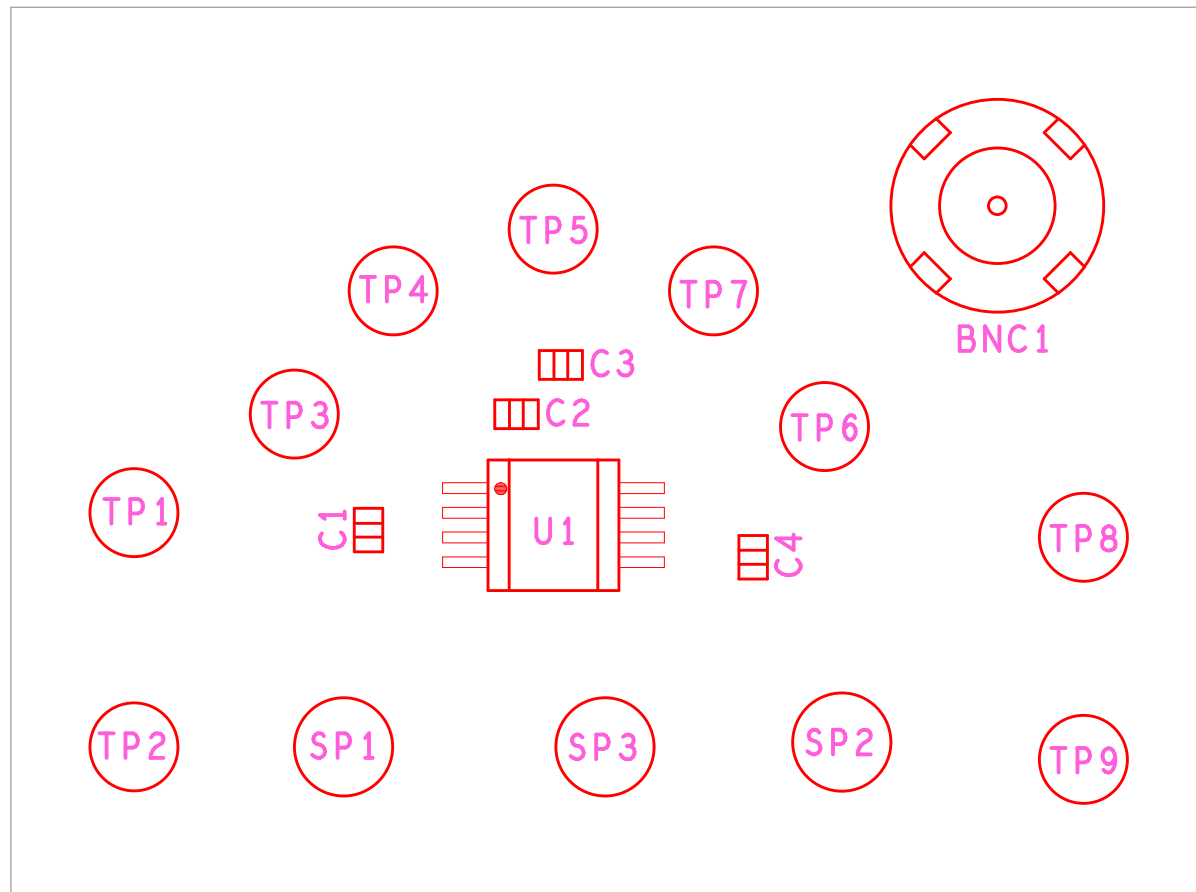


ISL7109XSEHXXEV1Z Rev.A



ASSEMBLY TOP

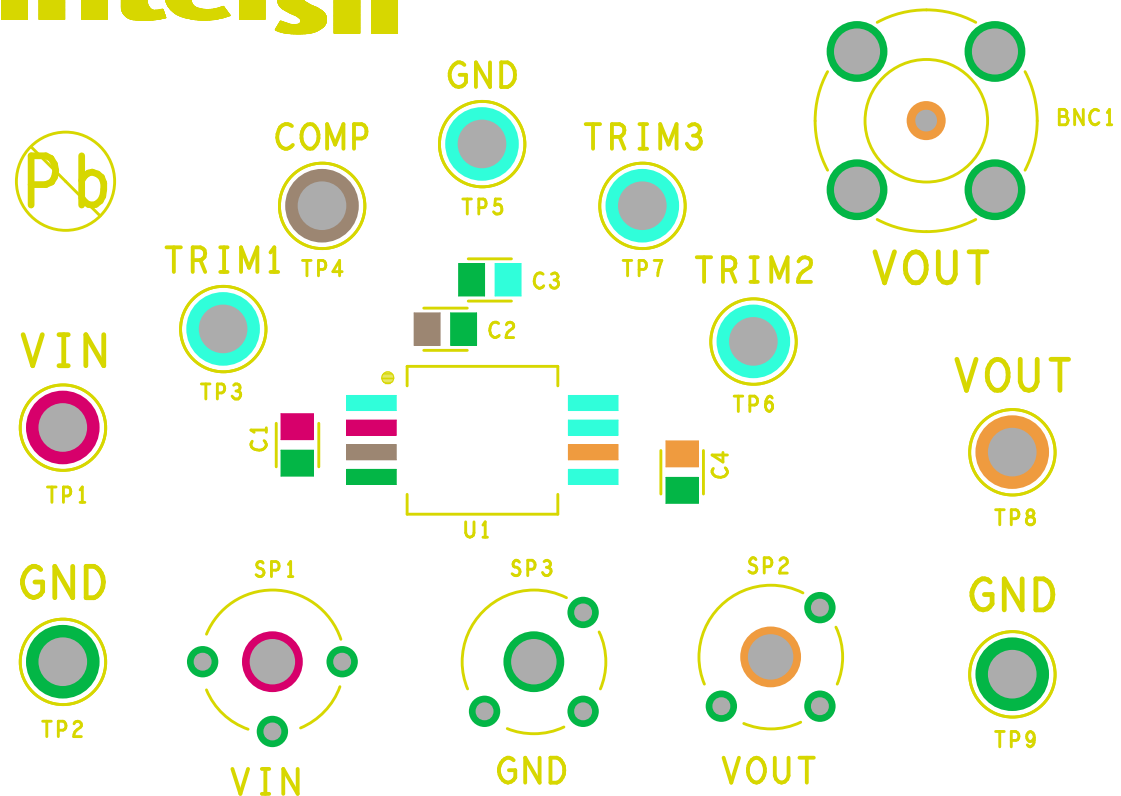
INTERSIL

05/31/2013

ISL7109XSEHXXEV1Z Rev.A

intersil

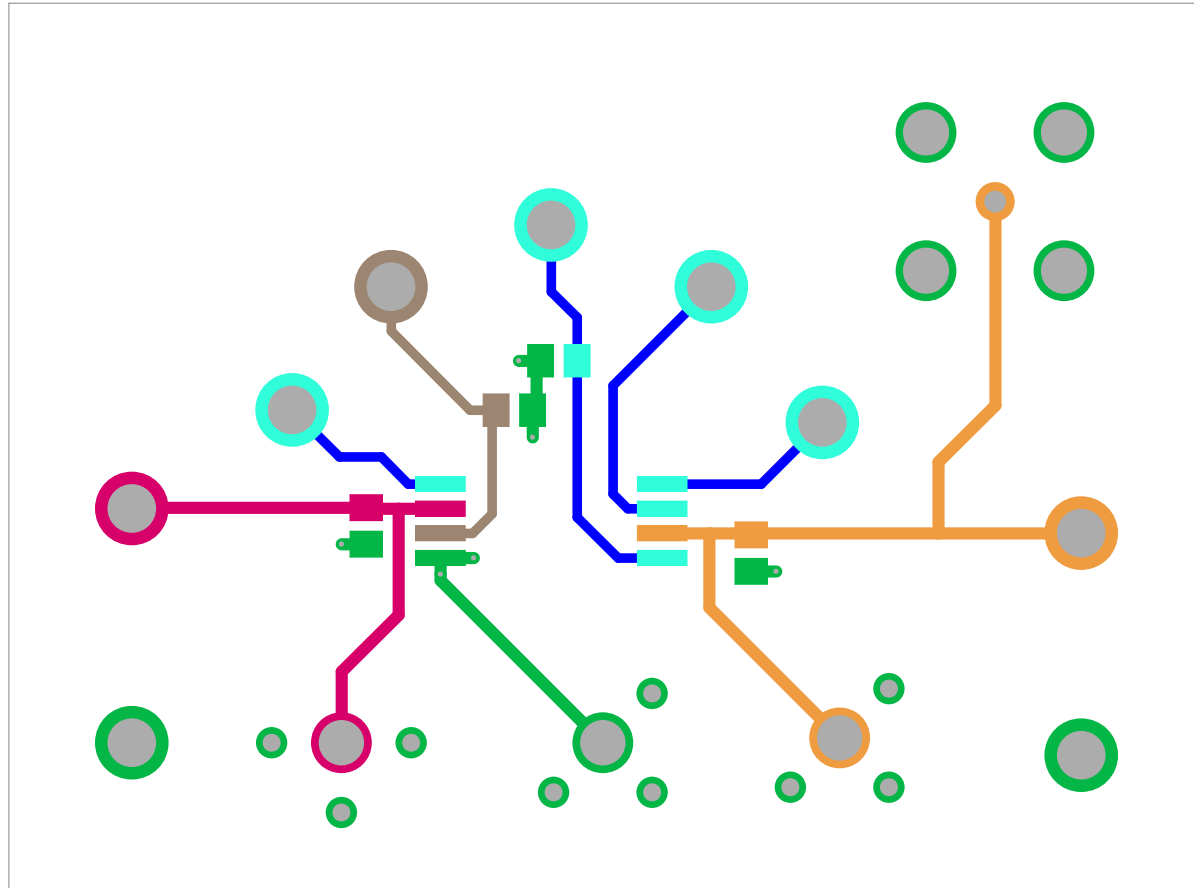
ISL7109XSEHXXEV1Z REV.A



SILKSCREEN TOP

INTERSIL
05/31/2013

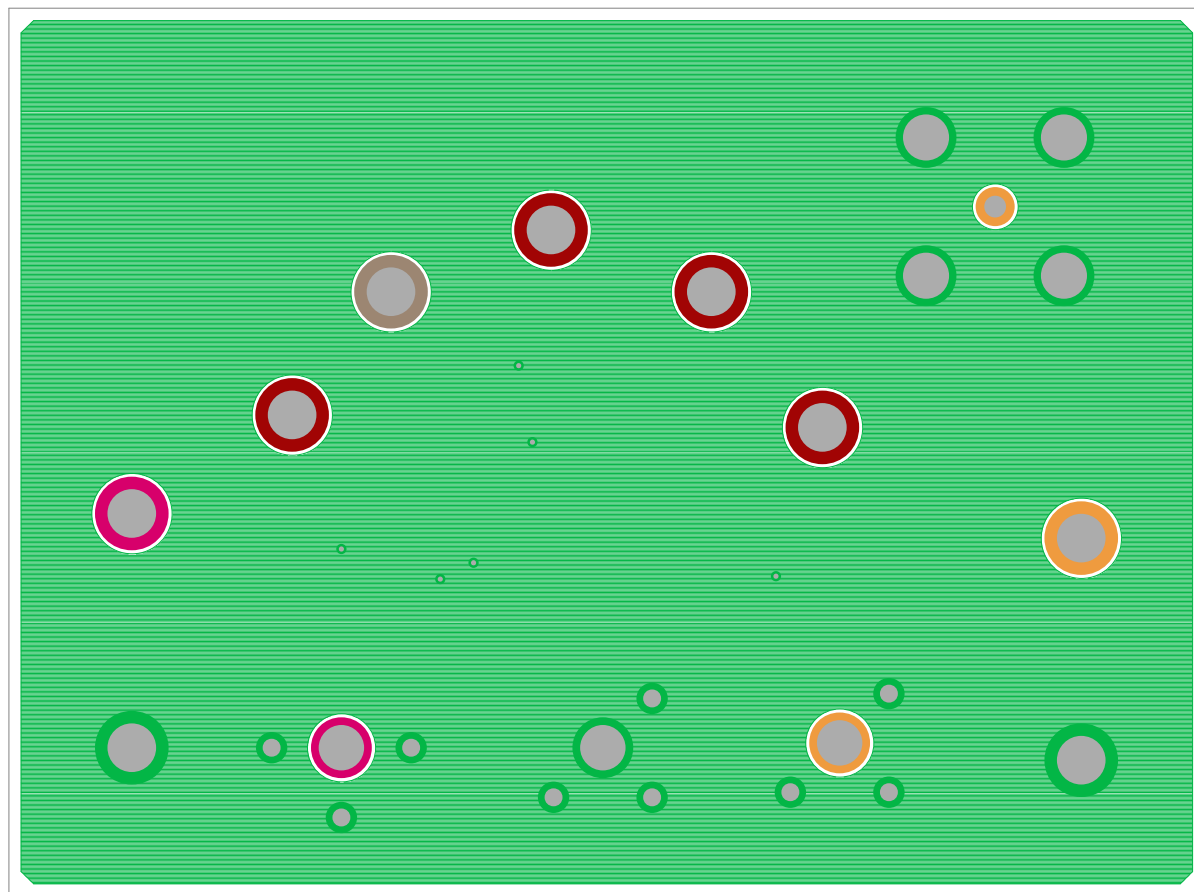
ISL7109XSEHXXEV1Z Rev.A



TOP LAYER
INTERSIL
05/31/2013



ISL7109XSEHXXEV1Z Rev.A



BOTTOM LAYER

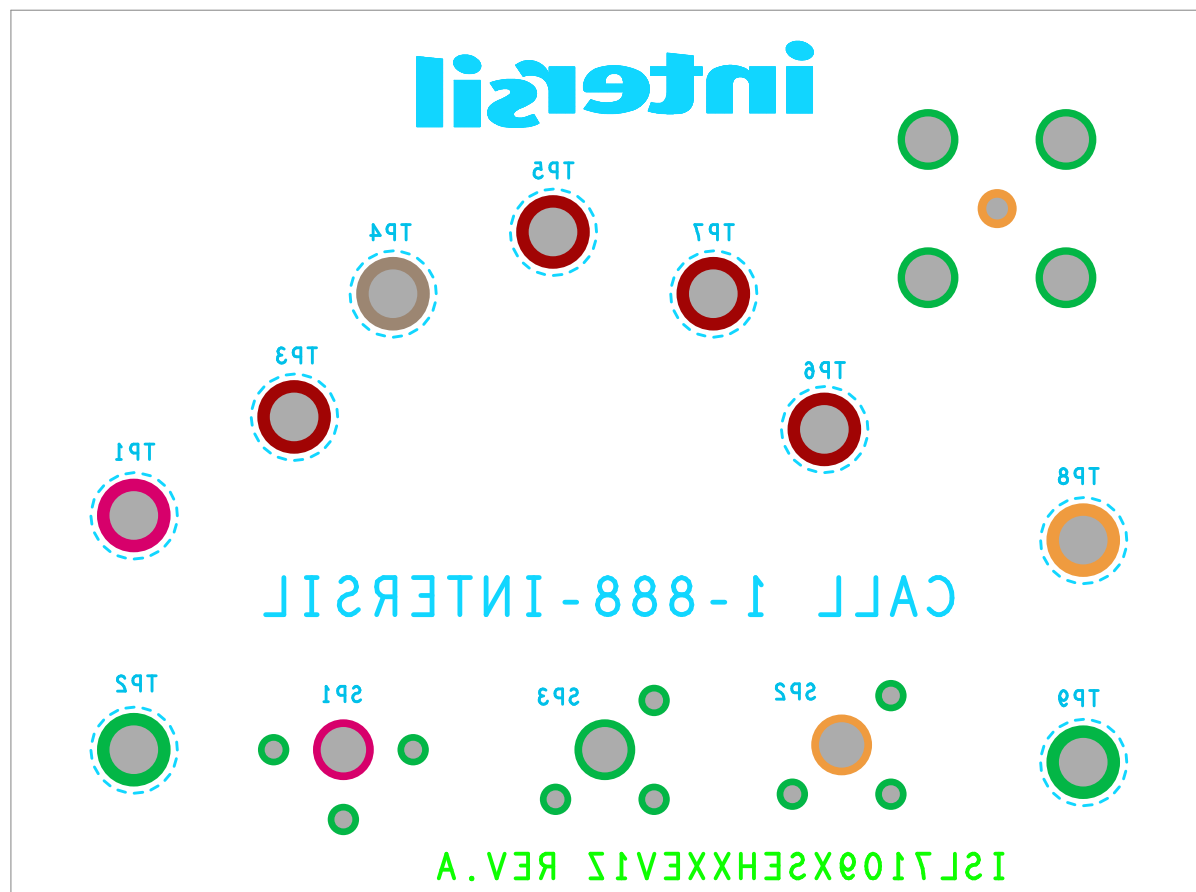
INTERSIL

05/31/2013





ISL7109XSEHXXEV1Z Rev.A



SILKSCREEN BOTTOM

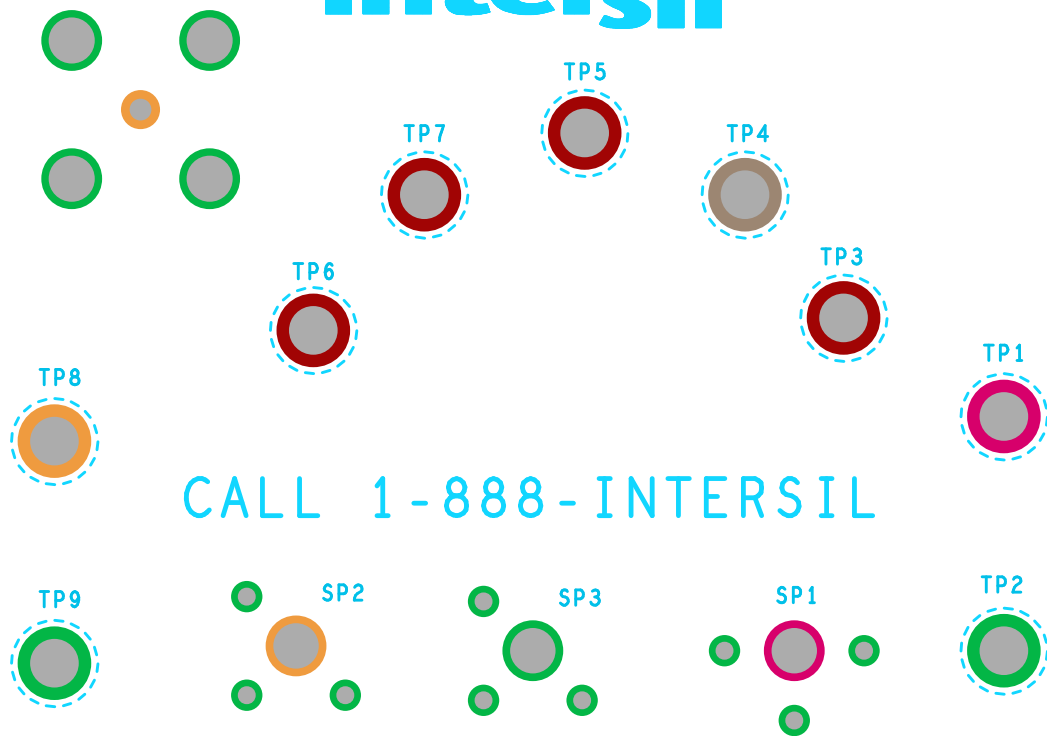
INTERSI
05/31/2013





ISL7109XSEHXXEV1Z Rev.A

intersil



CALL 1-888-INTERSIL

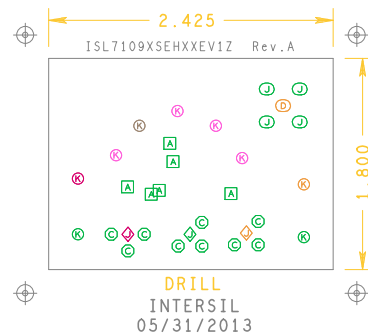
ISL7109XSEHXXEV1Z REV.A



SILKSCREEN BOTTOM

02\31\5013
INTERSIL

DRILL CHART: TOP to BOTTOM			
ALL UNITS ARE IN MILS			
FIGURE	SIZE	PLATED	QTY
A	12.0	PLATED	6
C	37.0	PLATED	9
D	45.0	PLATED	1
◆	93.0	PLATED	3
J	95.0	PLATED	4
⊗	100.0	PLATED	9



- NOTES:
1. THIS BOARD IS RoHS COMPLIANT.
 2. PRINTED WIRING BOARD DESIGN AND ACCEPTANCE CRITERIA SHALL BE IAW WITH THE REQUIREMENTS OF IPC-D-275 AND IPC-A-600.
 3. MATERIAL: FR4 (RoHS COMPLIANT), 1 OZ COPPER.
 4. APPLY SOLDER MASK, BOTH SIDES OVER BARE COPPER IAW IPC-SM-840, CLASS 2 (LPI) (INTERFIL RED MASK).
 5. ALL PATTERNS ARE VIEWED FROM THE PRIMARY SIDE LOOKING THROUGH THE BOARD.
 6. UNLESS OTHERWISE SPECIFIED ALL HOLE DIAMETERS ARE AFTER PLATING.
 7. APPLY SILKSCREEN USING WHITE NON-CONDUCTIVE EPOXY BASED INK.
 8. PWB MUST BE 100% ELECTRICALLY TESTED FOR SHORTS AND CONTINUITY. USE NETLIST PROVIDED ISL7109XSEHXEVIZA_IPC356.IPC IAW IPC-D-356.
 9. MARK DATE CODE AND MANUFACTURES IDENTIFICATION ON SOLDER SIDE PER IPC-6011 AND IPC-6012.
 10. TOLERANCE ON ALL DRILL HOLES SHALL BE IAW IPC-D-2221 & 2222 UNLESS OTHERWISE SPECIFIED.

[illegible]