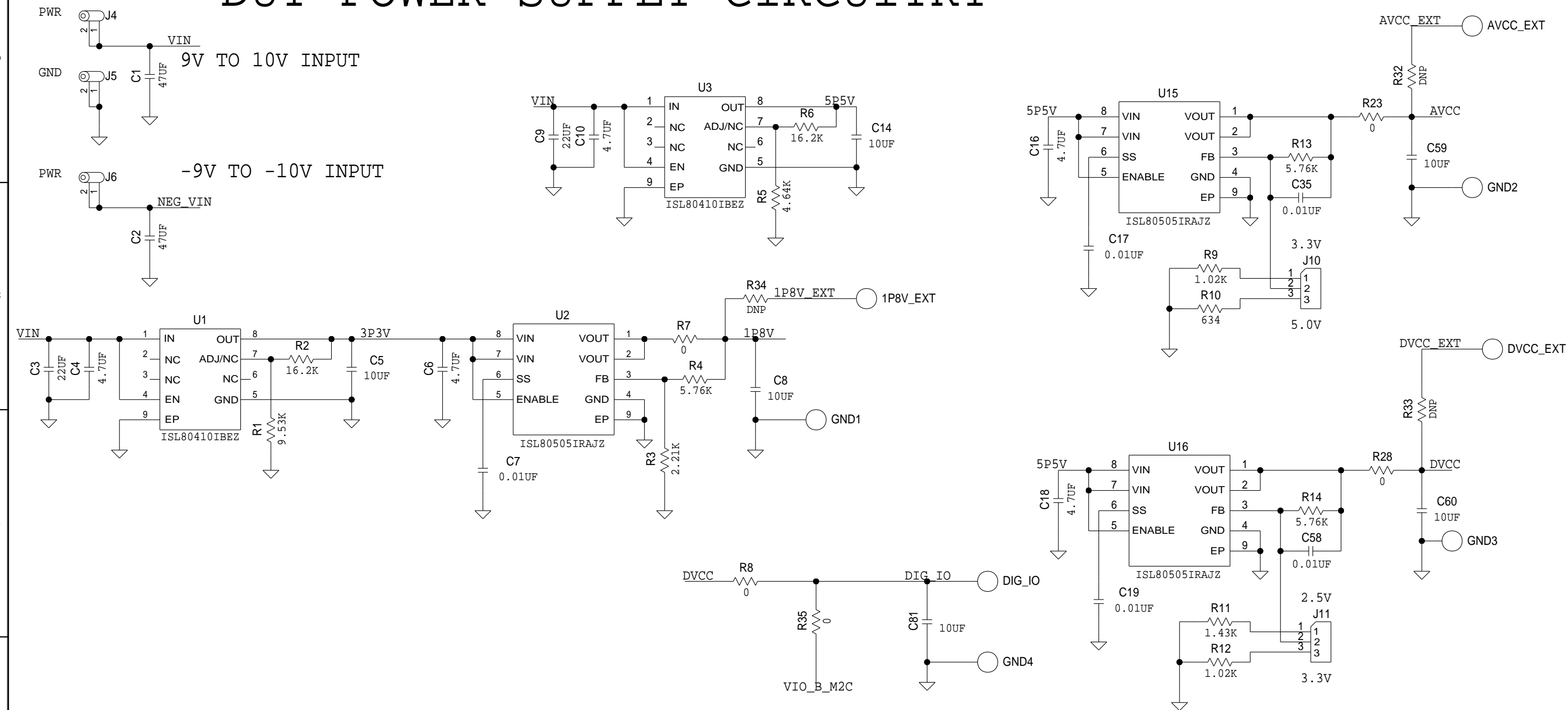


DUT POWER SUPPLY CIRCUITRY

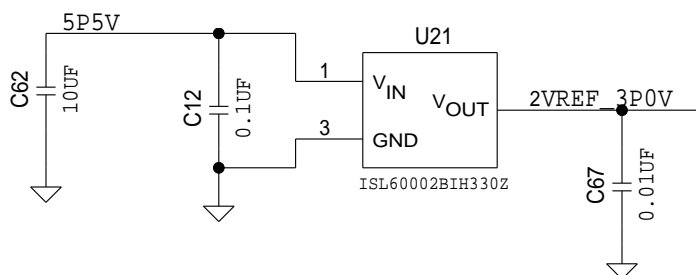


ISL73141SEHEV1Z SUPPORTS:
ISL73141SEHMF7: 5.0V
ISL73141SEHMFN: 3.3V

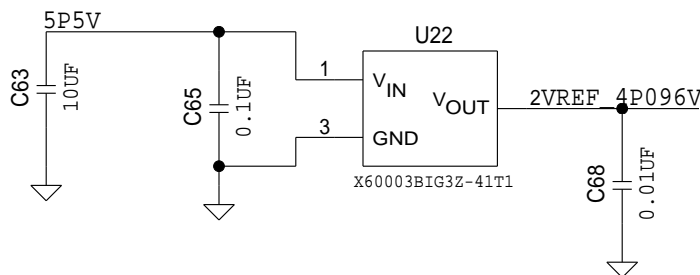
THIS DOCUMENT CONTAINS TECHNICAL DATA, EXPORT OF WHICH IS RESTRICTED BY THE U.S. EXPORT ADMINISTRATION REGULATIONS (EAR). DISCLOSURE TO FOREIGN PERSONS WITHOUT PRIOR U.S. GOVERNMENT APPROVAL IS PROHIBITED. VIOLATIONS OF THESE EXPORT LAWS AND REGULATIONS ARE SUBJECT TO SEVERE CIVIL AND CRIMINAL PENALTIES.

DRAWN BY: JONATHAN HARRIS	DATE: 08/03/2020	ENGINEER: JONATHAN HARRIS	DATE:
RELEASED BY:	DATE:	TITLE: ISL73141SEHEV1ZB	
UPDATED BY: RICHARD KOVACS	DATE: 08/06/2020		
	TESTER	MASK#	HRDWR ID
	FILENAME: ISL73141SEHEV1ZA		REV. B
		SHEET 1 OF 6	

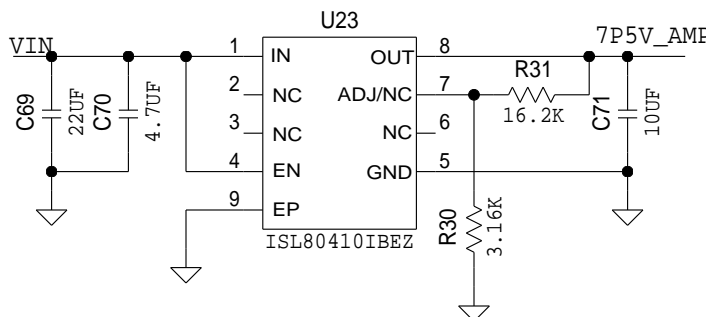
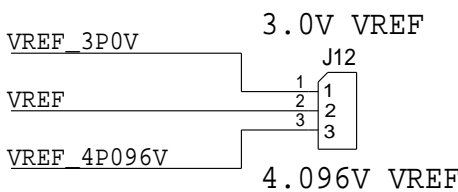
AMP POWER SUPPLY AND VREF CIRCUITRY



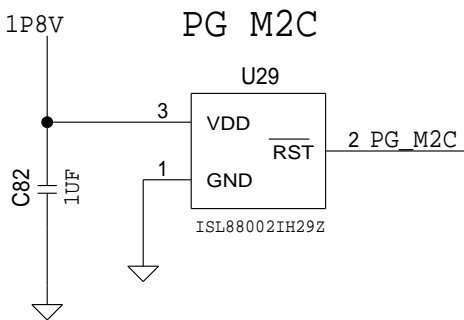
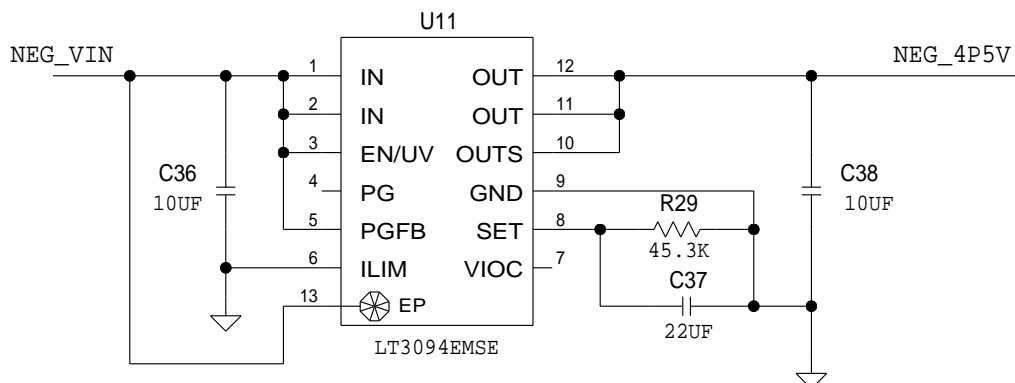
3.0V REFERENCE



4.096V REFERENCE



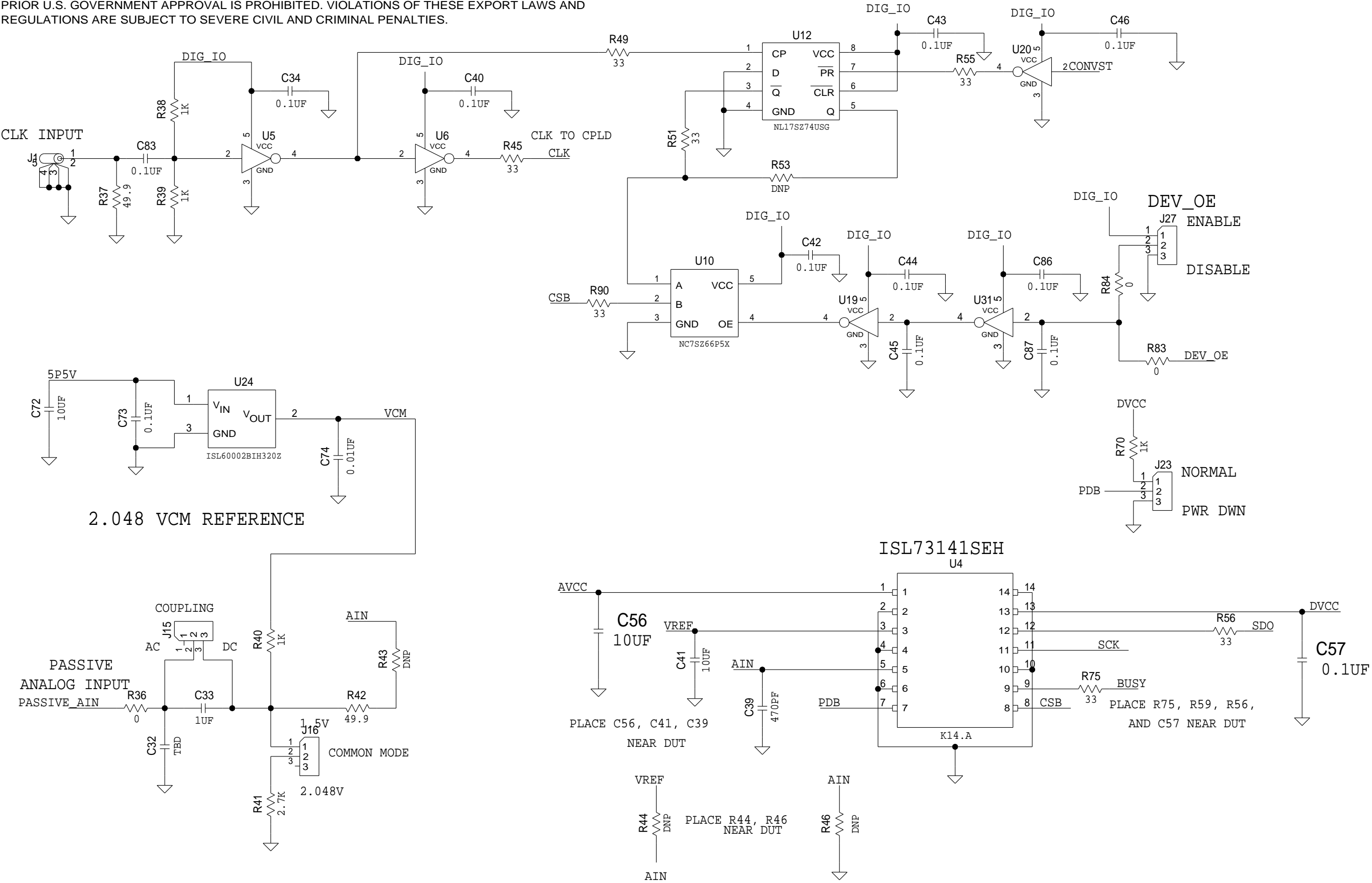
+7.5V/-4.5V SUPPLIES FOR AMPLIFIERS



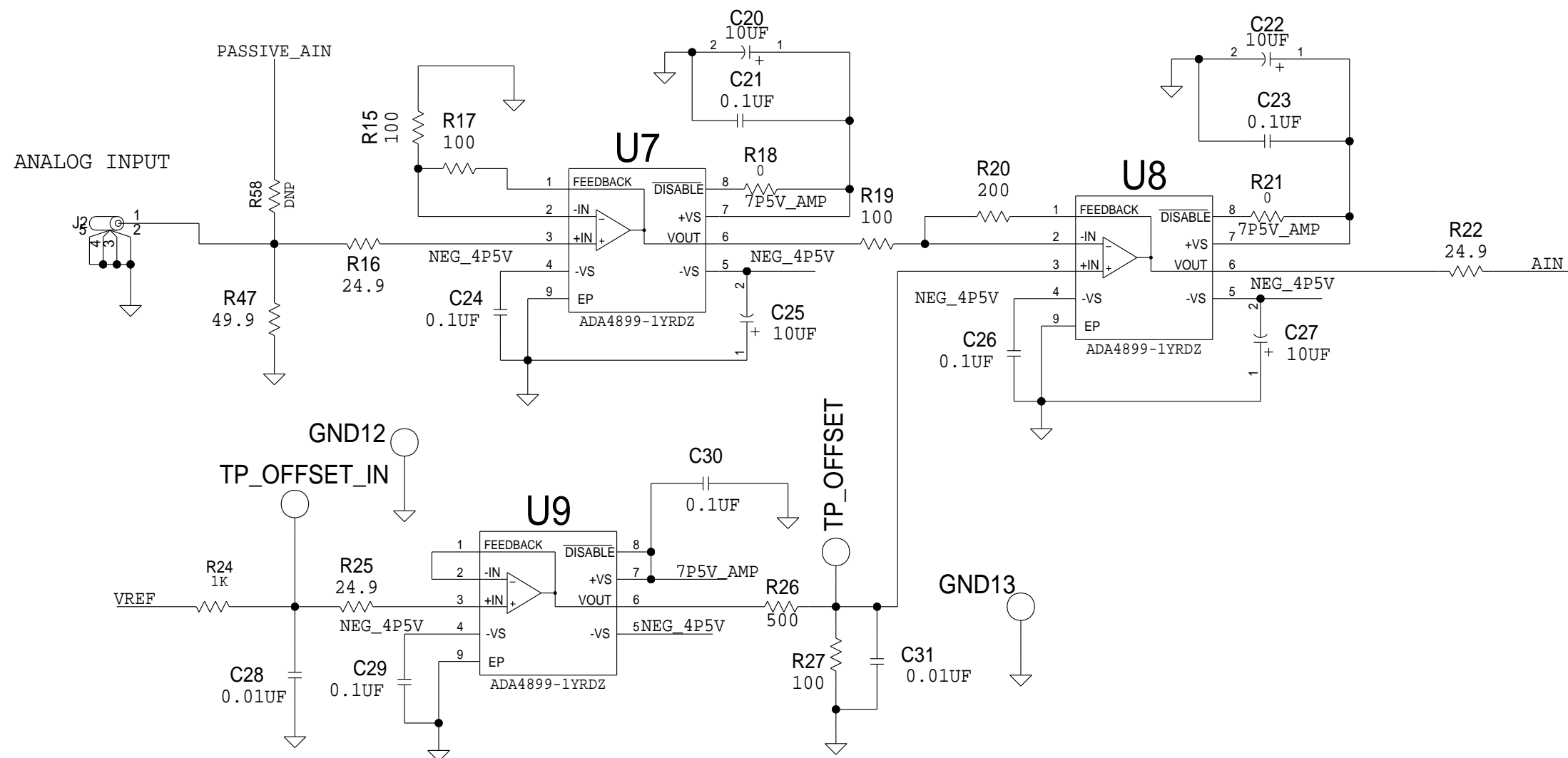
THIS DOCUMENT CONTAINS TECHNICAL DATA, EXPORT OF WHICH IS RESTRICTED BY THE U.S. EXPORT ADMINISTRATION REGULATIONS (EAR). DISCLOSURE TO FOREIGN PERSONS WITHOUT PRIOR U.S. GOVERNMENT APPROVAL IS PROHIBITED. VIOLATIONS OF THESE EXPORT LAWS AND REGULATIONS ARE SUBJECT TO SEVERE CIVIL AND CRIMINAL PENALTIES.

THIS DOCUMENT CONTAINS TECHNICAL DATA, EXPORT OF WHICH IS RESTRICTED BY THE U.S. EXPORT ADMINISTRATION REGULATIONS (EAR). DISCLOSURE TO FOREIGN PERSONS WITHOUT PRIOR U.S. GOVERNMENT APPROVAL IS PROHIBITED. VIOLATIONS OF THESE EXPORT LAWS AND REGULATIONS ARE SUBJECT TO SEVERE CIVIL AND CRIMINAL PENALTIES.

PASSIVE AIN, CLOCK, AND ADC CIRCUITRY

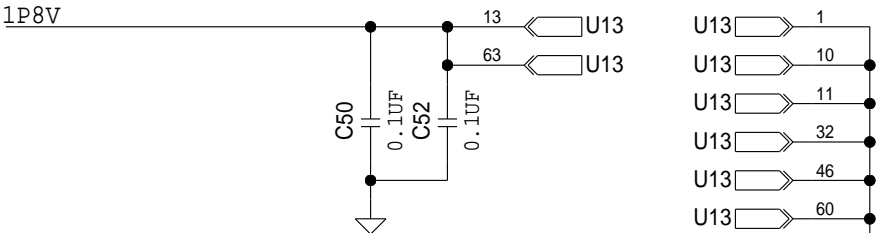


ANALOG INPUT AMPLIFIER CIRCUITRY

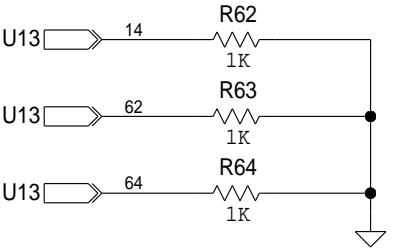
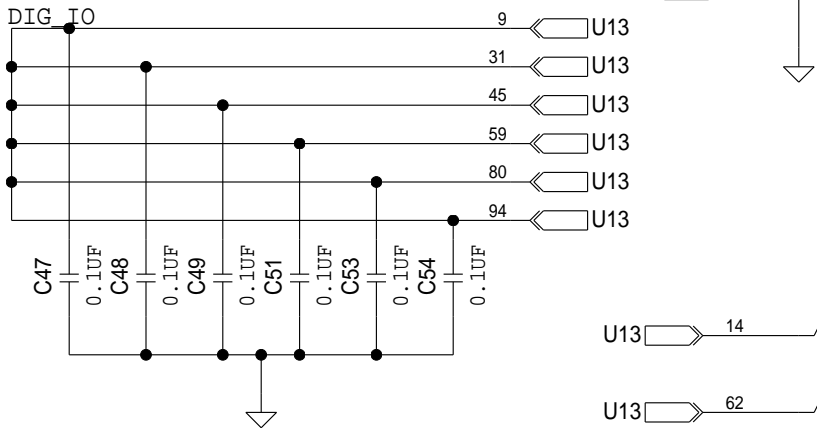


THIS DOCUMENT CONTAINS TECHNICAL DATA, EXPORT OF WHICH IS RESTRICTED BY THE U.S. EXPORT ADMINISTRATION REGULATIONS (EAR). DISCLOSURE TO FOREIGN PERSONS WITHOUT PRIOR U.S. GOVERNMENT APPROVAL IS PROHIBITED. VIOLATIONS OF THESE EXPORT LAWS AND REGULATIONS ARE SUBJECT TO SEVERE CIVIL AND CRIMINAL PENALTIES.

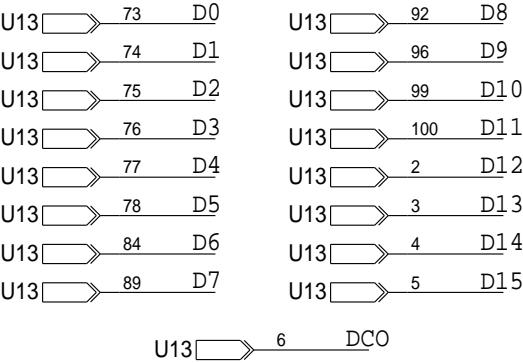
CPLD AND BOARD CONNECTORS CIRCUITRY



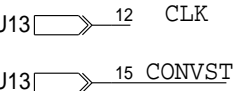
CPLD PWR & GND



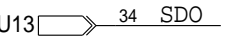
CPLD PARALLEL DATA & CLOCK



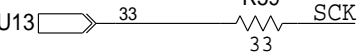
CPLD CLOCKS



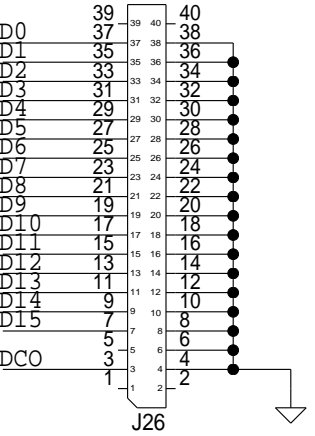
SERIAL DATA PINS



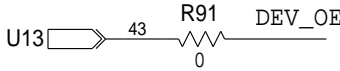
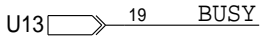
PLACE CAP NEAR CPLD



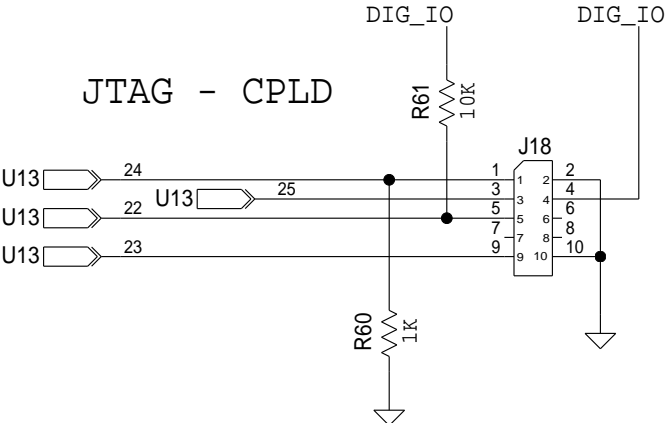
VERTICAL MOUNT PARALLEL CONNECTOR



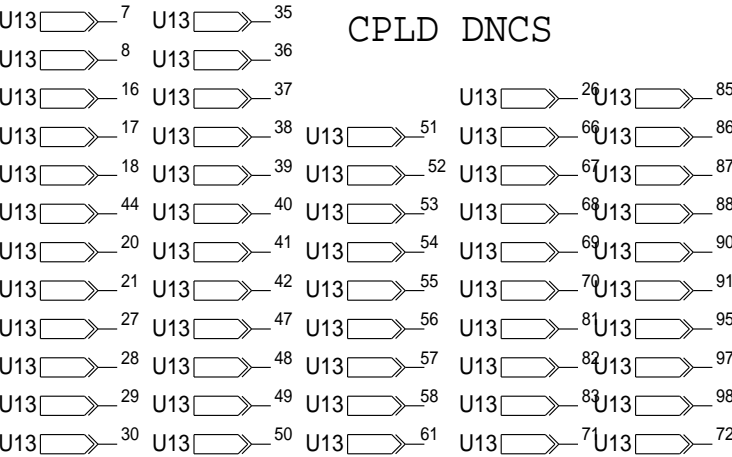
GPIO PINS



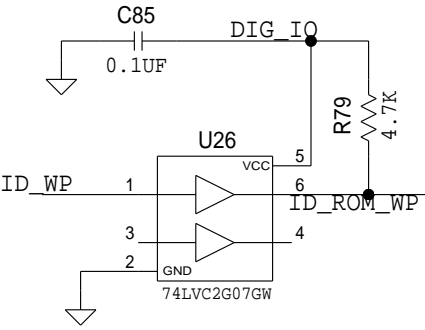
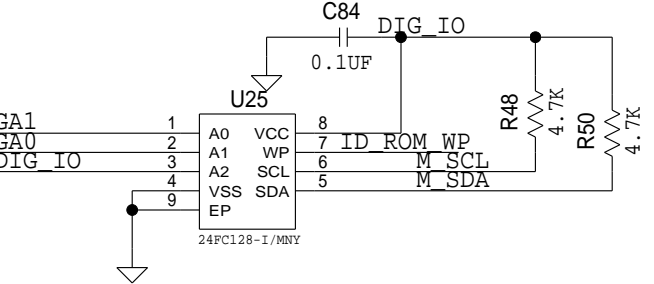
JTAG - CPLD



CPLD DNCS

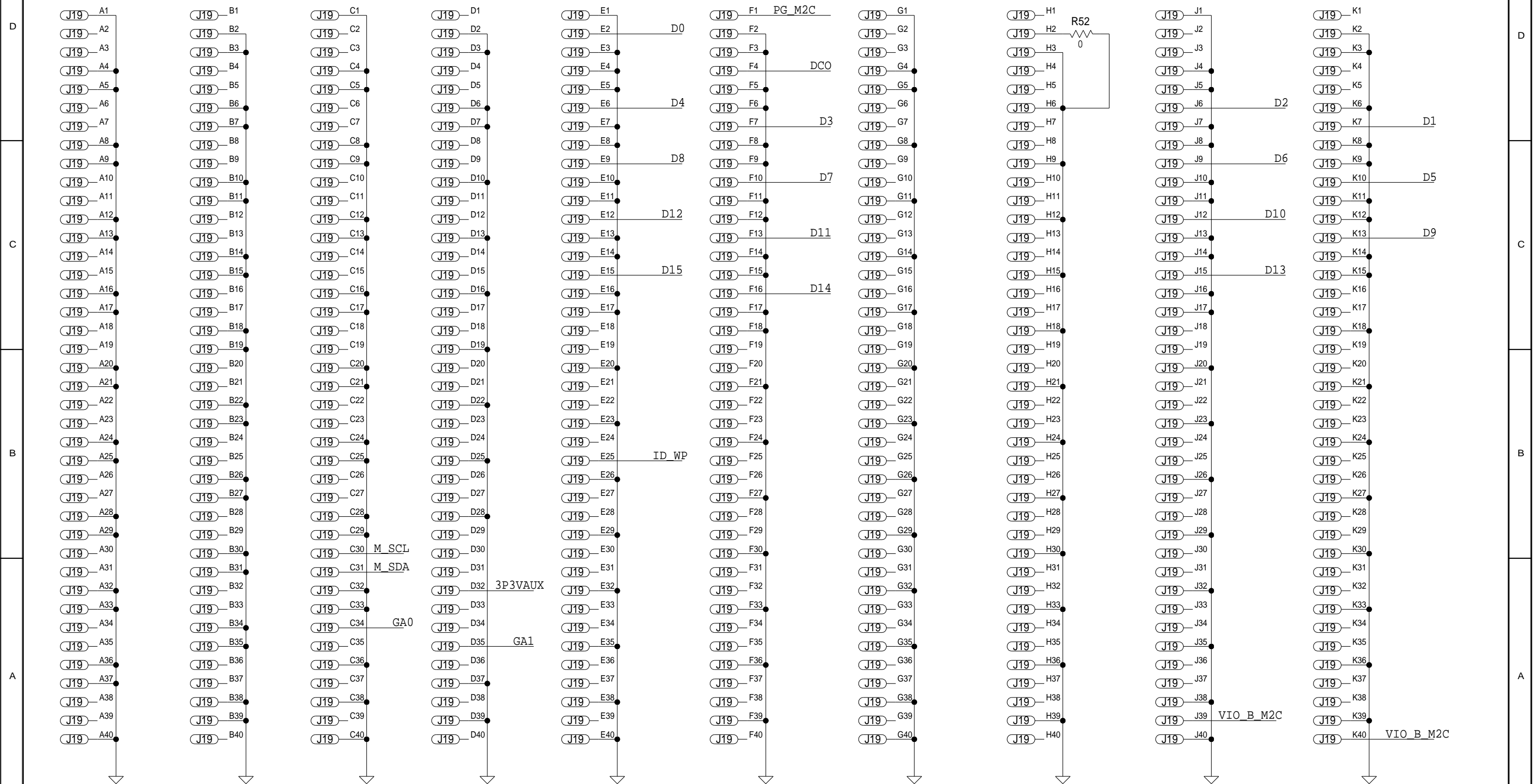


ID EEPROM



THIS DOCUMENT CONTAINS TECHNICAL DATA, EXPORT OF WHICH IS RESTRICTED BY THE U.S. EXPORT ADMINISTRATION REGULATIONS (EAR). DISCLOSURE TO FOREIGN PERSONS WITHOUT PRIOR U.S. GOVERNMENT APPROVAL IS PROHIBITED. VIOLATIONS OF THESE EXPORT LAWS AND REGULATIONS ARE SUBJECT TO SEVERE CIVIL AND CRIMINAL PENALTIES.

FMC CONNECTIONS



FMC CONNECTOR MOUNTED ON BOTTOM SIDE OF BOARD

THIS DOCUMENT CONTAINS TECHNICAL DATA, EXPORT OF WHICH IS RESTRICTED BY THE U.S. EXPORT ADMINISTRATION REGULATIONS (EAR). DISCLOSURE TO FOREIGN PERSONS WITHOUT PRIOR U.S. GOVERNMENT APPROVAL IS PROHIBITED. VIOLATIONS OF THESE EXPORT LAWS AND REGULATIONS ARE SUBJECT TO SEVERE CIVIL AND CRIMINAL PENALTIES.

HRDWR ID
ISL73141SEHEV1Z

REV.	B
------	---

SHEET 6 OF 6