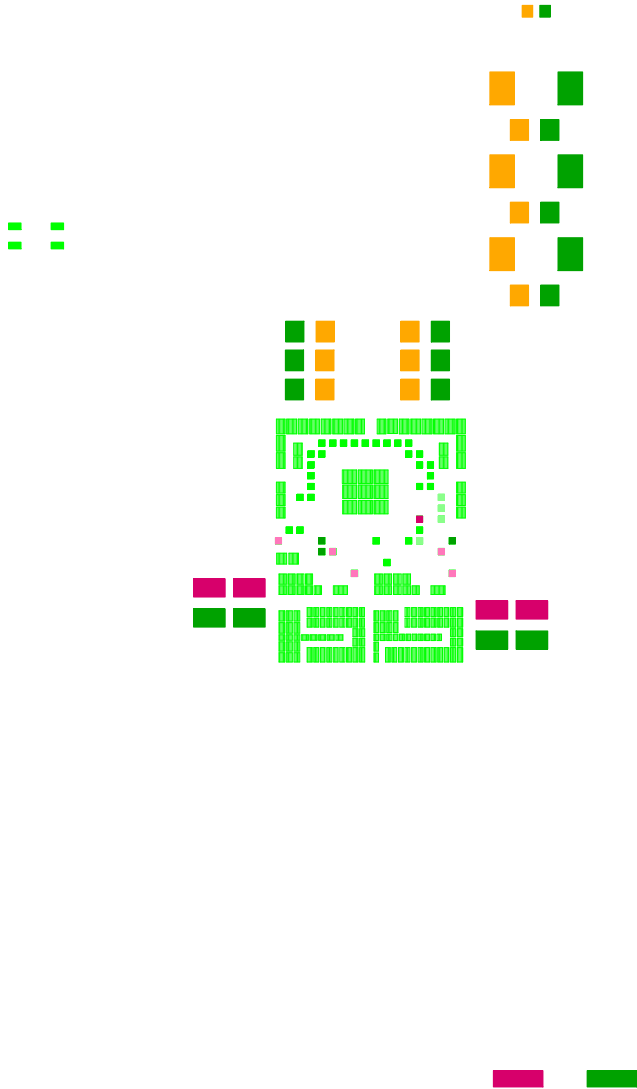
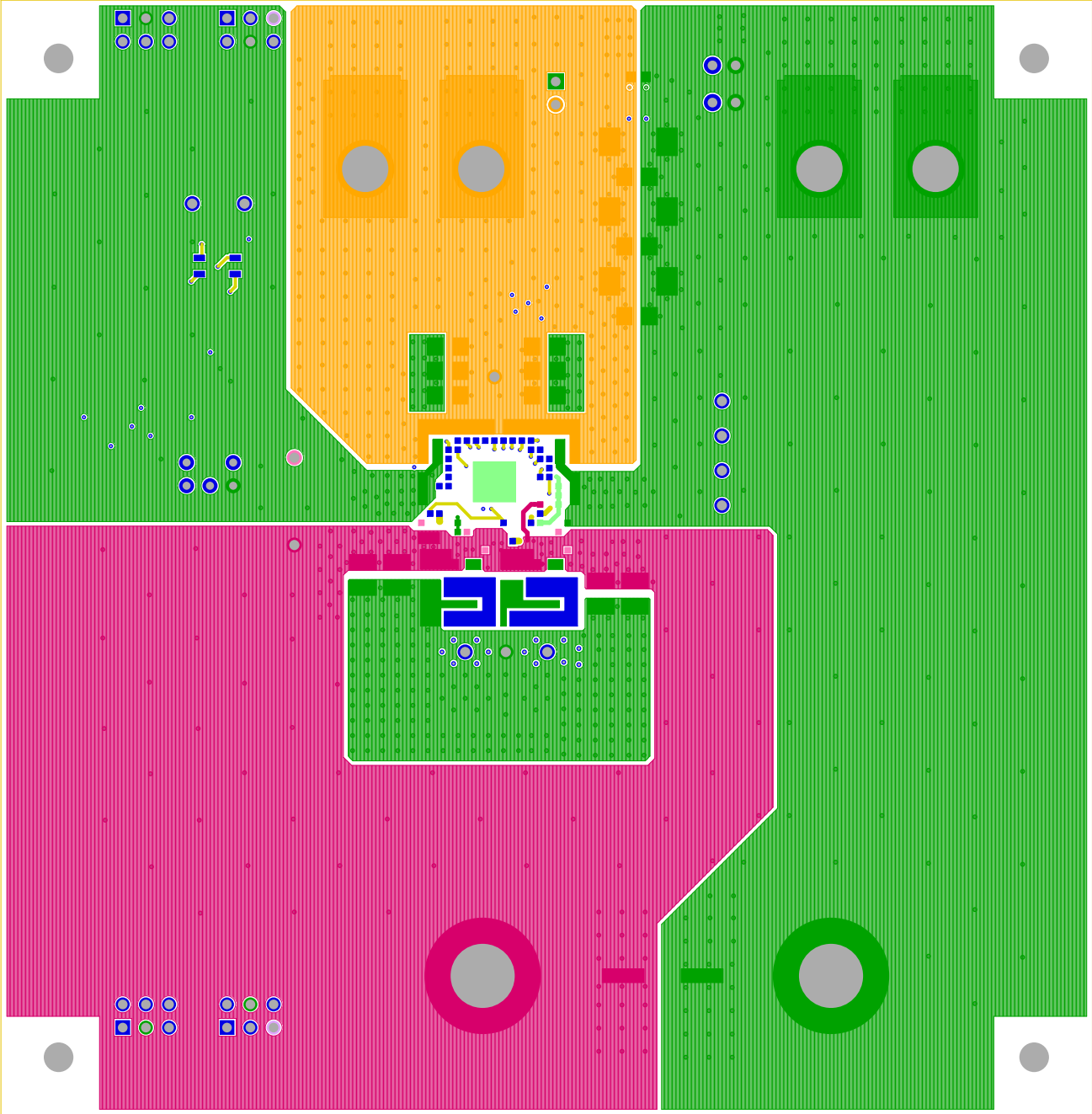


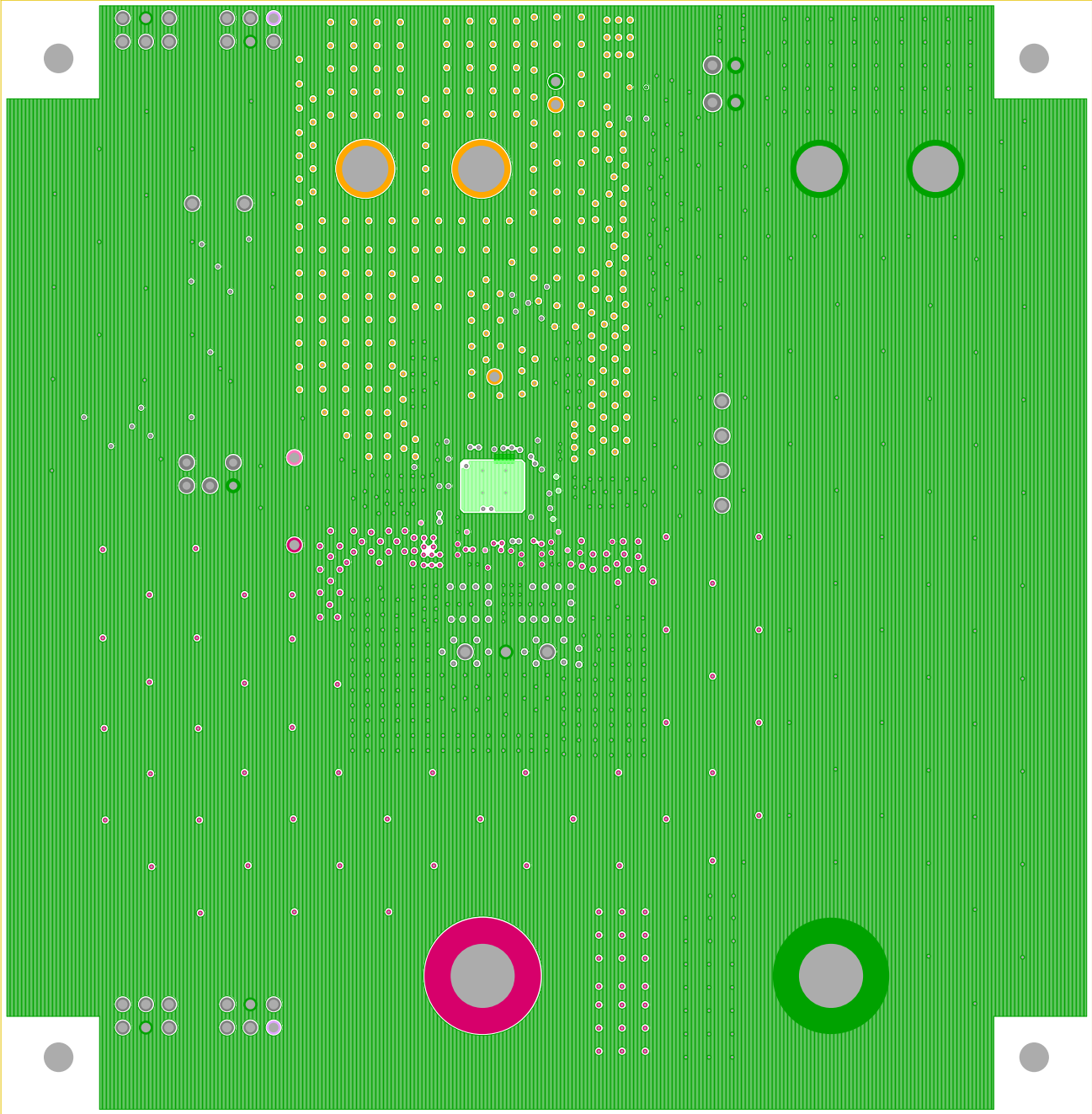
ASSEMBLY TOP
INTERSIL CORPORATION
12-01-2014

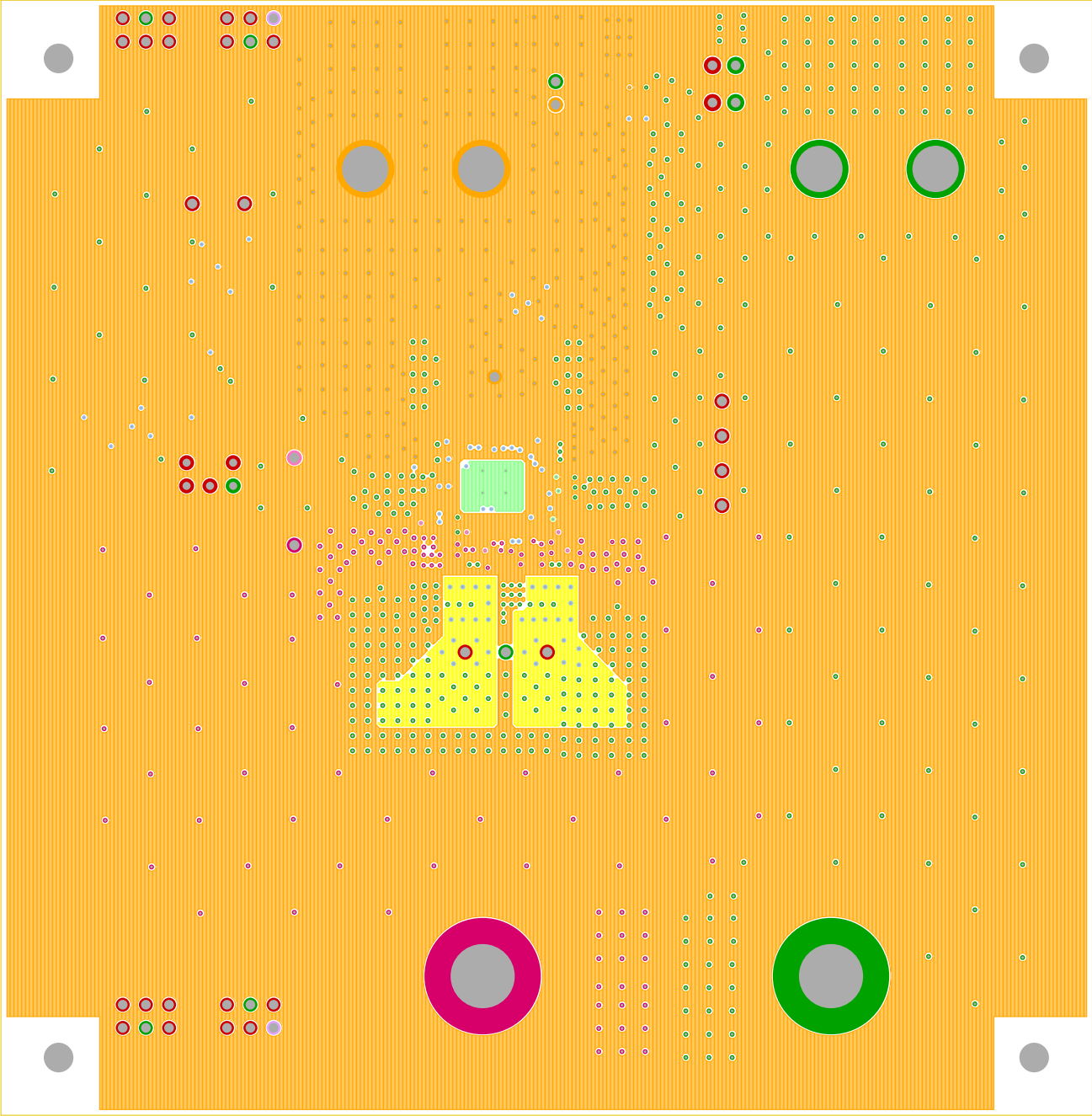


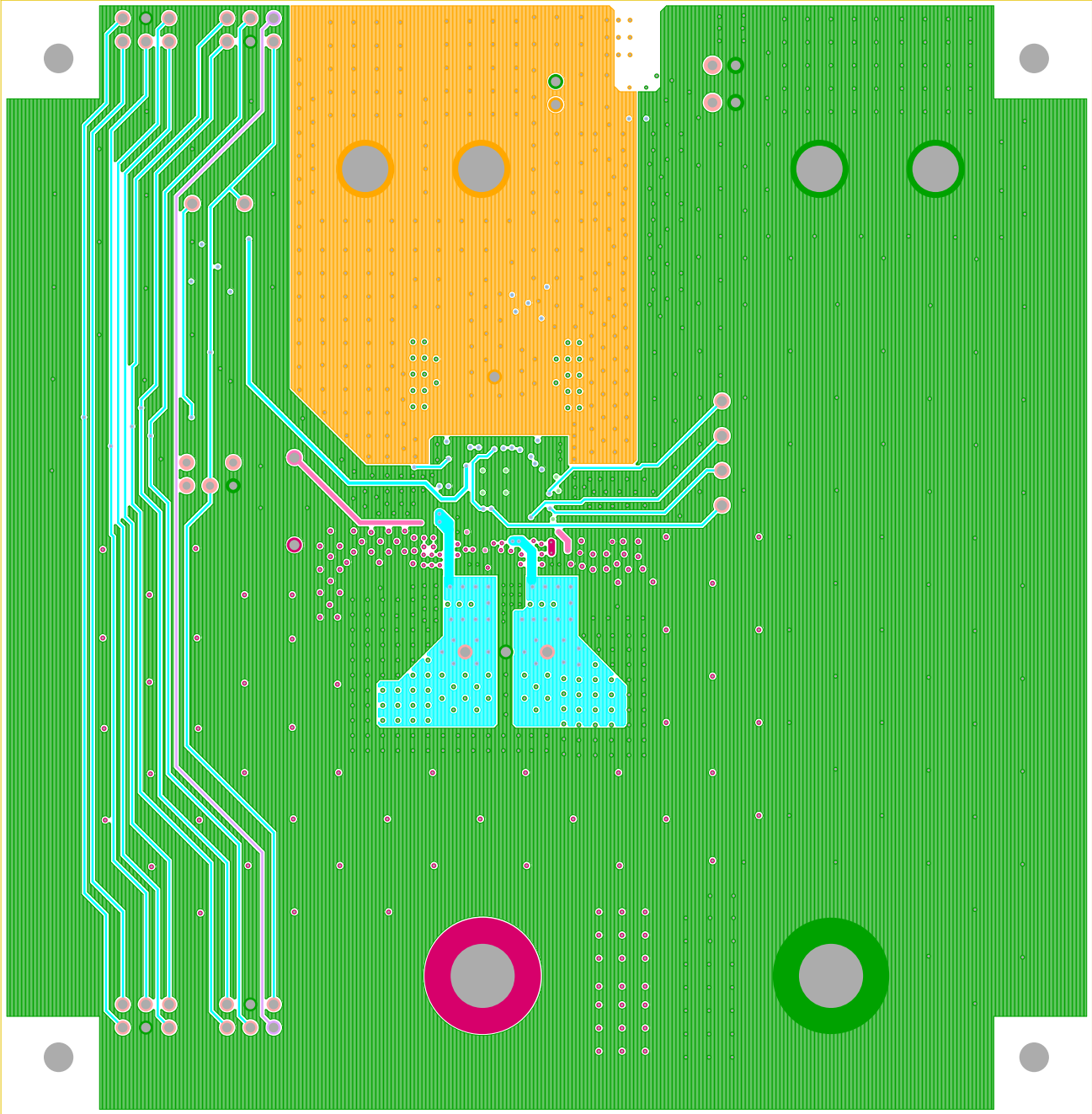
SOLDER PASTE TOP
INTERSIL CORPORATION
12-01-2014

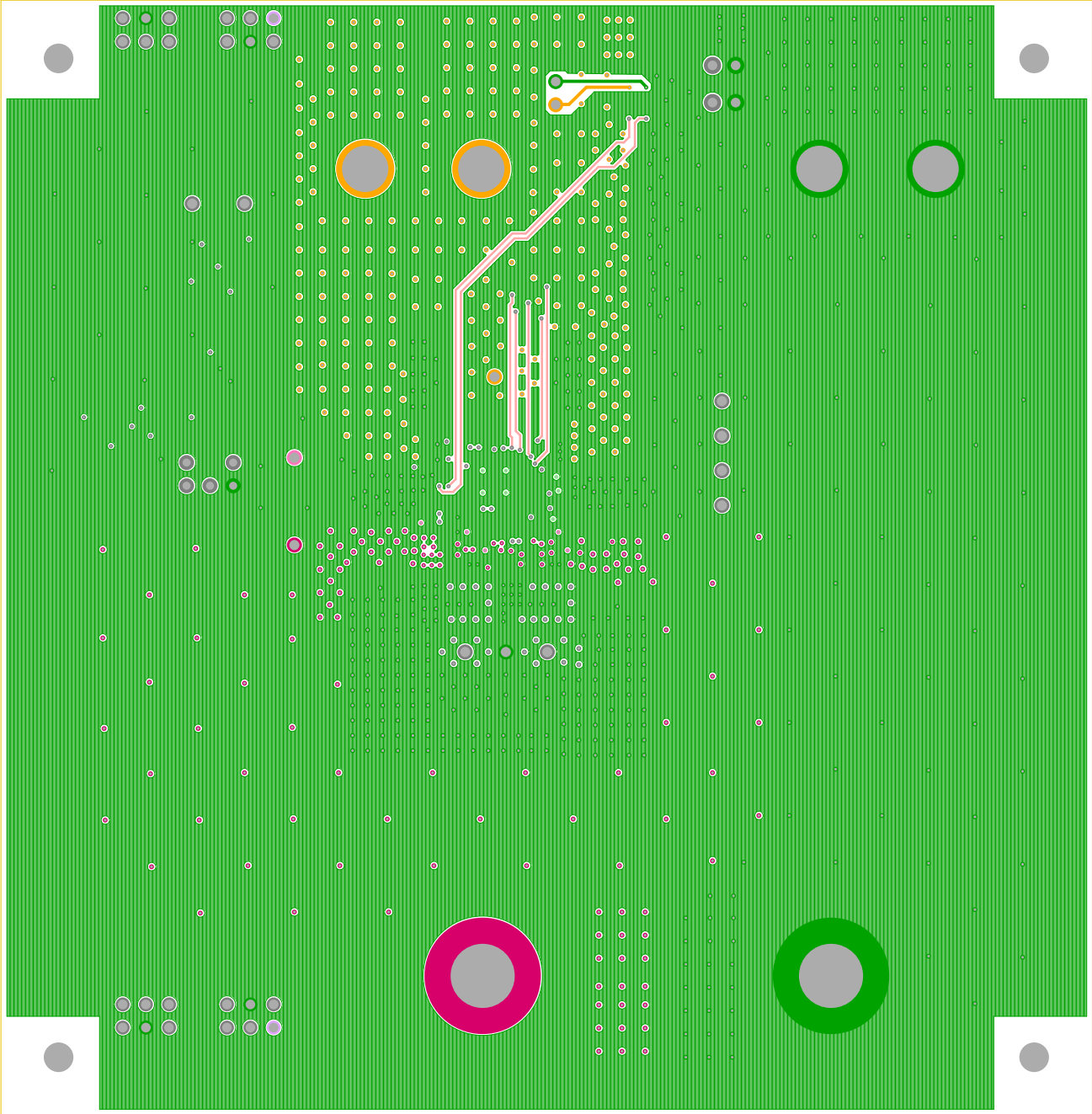


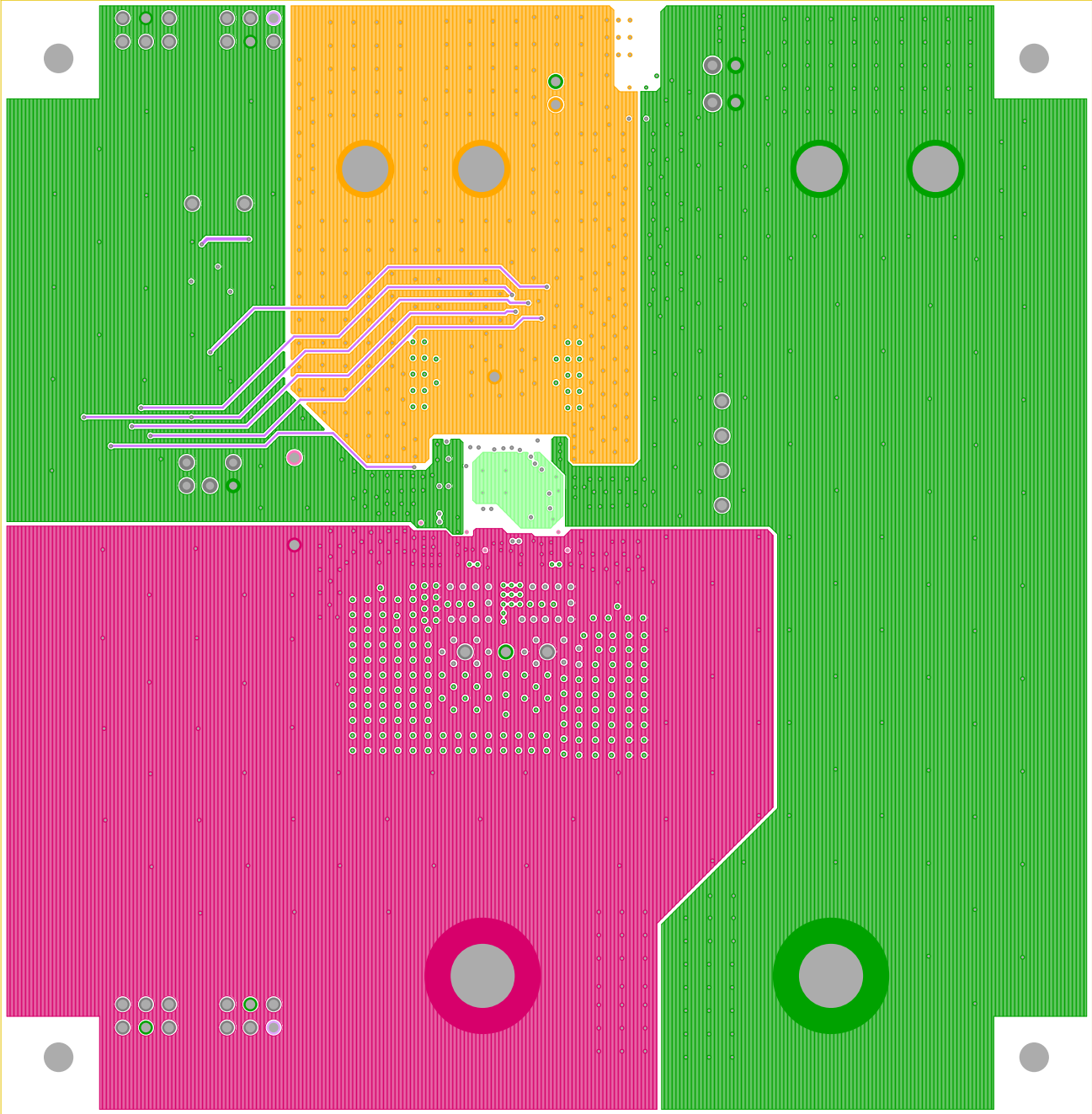


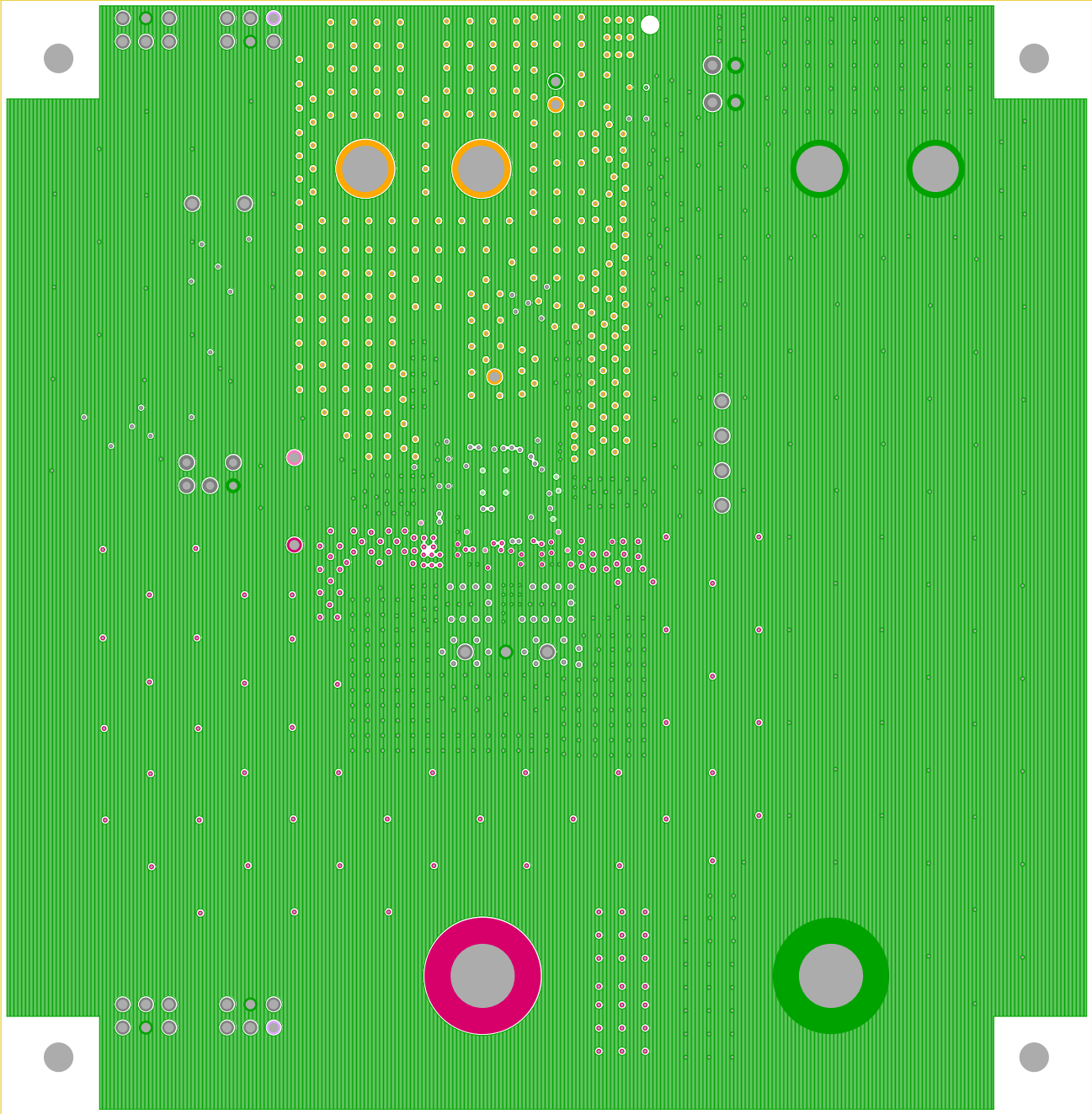


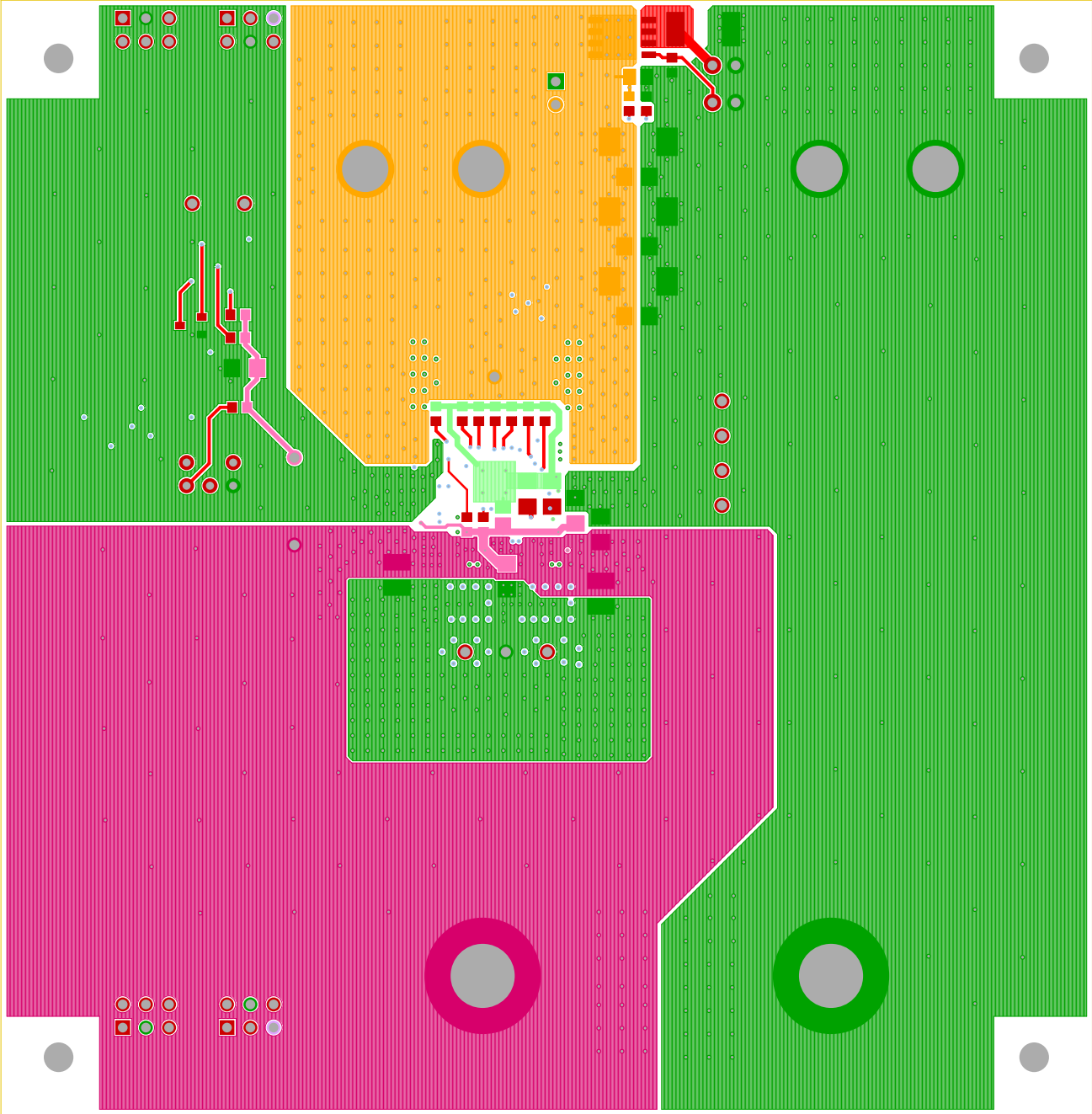




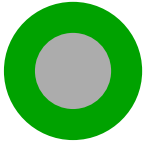
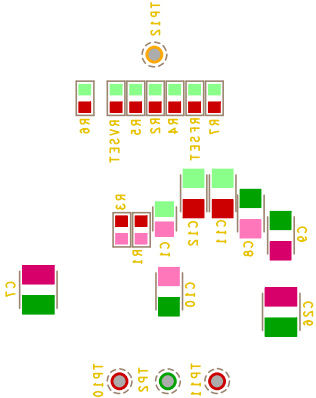
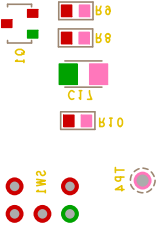








VOV	RAVEL	Fredneuc	RFSEL
(V)	(KOHm)	(KHz)	(KOHm)
5.2	110	211	58.1
1.8	41.4	211	58.1
1.2	40.4	400	10.0
1.5	31.8\H1qH	400	10.0
1.0	51.2\Low	400	10.0

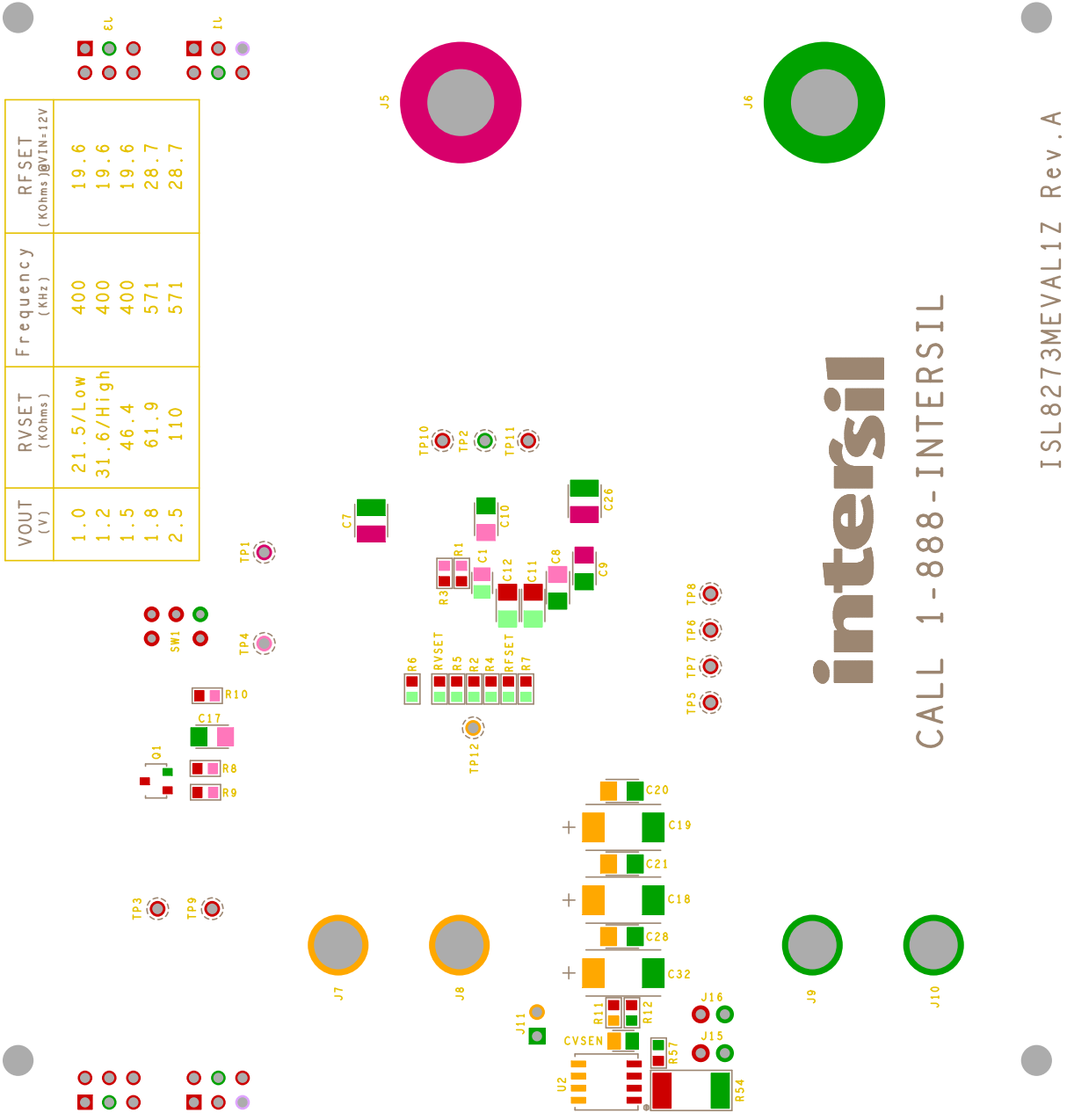


intersil

ISL8273MEVAL1Z Rev.A

ISL8273MEVAL1Z Rev.A

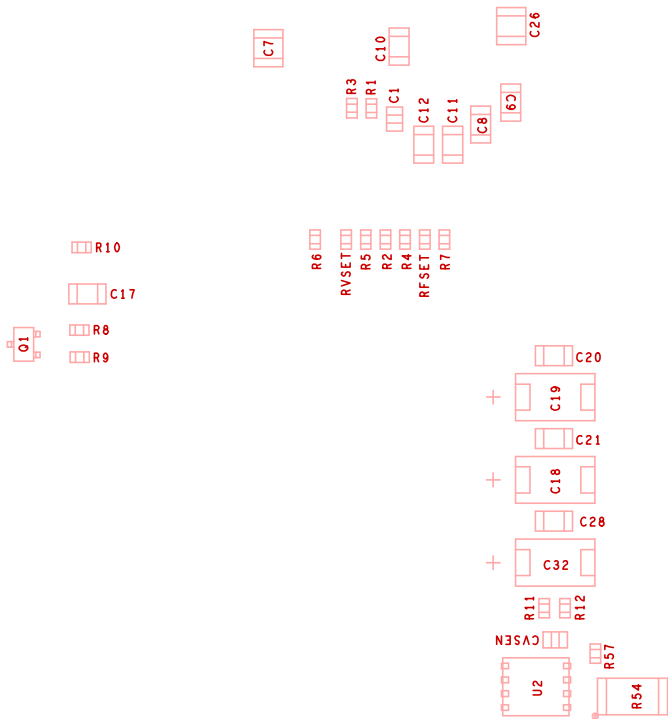
SILK SCREEN BOTTOM
INTERMIL CORPORATION
12-01-2014



interSil
CALL 1-888-INTERSil

IS-01-S014
INTERSil CORPORATION
SILK SCREEN BOTTOM

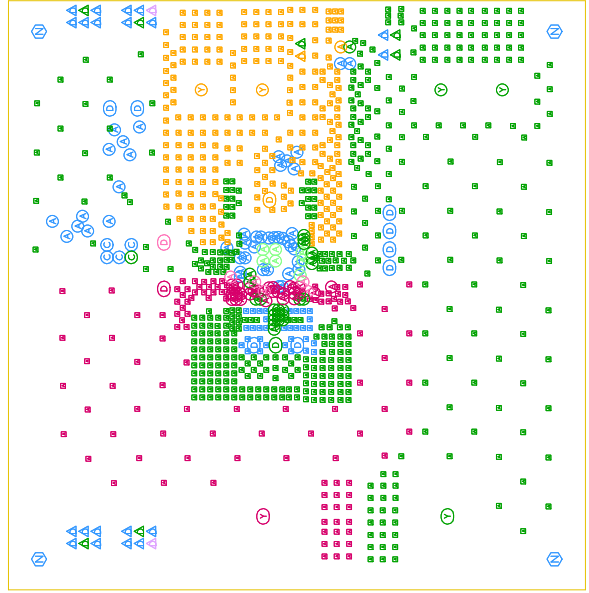
IS-01-S014
INTERCIT CORPORATION
A22EWBTA BOTTOM



	SILK TOP	SILK TOP	silk_t.art
	MASK TOP		smask_t.art
	COMPONENT		layer1.art
	LAYER 2		layer2.art
	LAYER 3		layer3.art
	LAYER 4		layer4.art
	LAYER 5		layer5.art
	LAYER 6		layer6.art
	LAYER 7		layer7.art
	SOLDER		layer8.art
	MASK BOTTOM		smask_b.art
	SILK BOTTOM		silk_b.art

4.800

4.700



DRILL

NOTES:

1. THIS BOARD IS RAHS COMPLIANT.
2. PRINTED WIRING BOARD DESIGN AND ACCEPTANCE CRITERIA SHALL BE IAW WITH THE REQUIREMENTS OF IPC-D-275 AND IPC-A-600.
3. MATERIAL: FR4 (RoHS COMPLIANT), 2 OZ COPPER.
4. APPLY SOLDER MASK, BOTH SIDES OVER CORE COPPER IAW IPC-SM-840, CLASS 2 (LPI) (INTERSTIL RED MASK).
5. ALL PATTERNS ARE VIEWED FROM THE PRIMARY SIDE LOOKING THROUGH THE BOARD.
6. UNLESS OTHERWISE SPECIFIED ALL HOLE DIAMETERS ARE AFTER PLATING.
7. APPLY SILKSREEN USING WHITE NON-CONDUCTIVE EPOXY BASED INK.
8. PWB MUST BE 100% ELECTRICALLY TESTED FOR SHORTS AND CONTINUITY. USE NETLIST PROVIDED I5182735WEALVZA_IPC356_IPC IAW IPC-D-356.
9. MARK DATE CODE AND MANUFACTURES IDENTIFICATION ON SOLDER SIDE PER IPC-6011 AND IPC-6012.
10. TOLERANCE ON ALL DRILL HOLES SHALL BE IAW IPC-D-2221 & 2222 UNLESS OTHERWISE SPECIFIED.
11. NETS GND AND GND POWER ARE INTENTIONALLY SHORTED ON LAYER 2.

[illegible]

DASH NO.	NEXT ASSY
	APPLICATION