

---

## ASM to Synchronous Conversion

### SLG46537

---

The application note gives step-by-step guidelines for creating ASM to synchronous conversion using a SLG46537V device. A unique set of components of the SLG46537 allows the creation of such a system.

The application note comes complete with design files which can be found in the Reference section.

## Contents

1. Terms and Definitions .....	2
2. References .....	2
3. Introduction .....	3
4. Synchronous State Machine Design .....	3
5. Conclusion .....	6
6. Revision History .....	7

## Figures

Figure 1. Adding synchronization to ASM .....	3
Figure 2. "Edge detector" solution .....	3
Figure 3. General synchronization block structure .....	4
Figure 4. ASM RAM .....	4
Figure 5. Synchronous State Machine transitions .....	5
Figure 6. ASM state diagram .....	5
Figure 7. GreenPAK Design circuit.....	6

# 1. Terms and Definitions

ASM	Asynchronous State Machine
DFF	D Flip-Flop
RAM	Random Access Memory
SSM	Synchronous State Machine

# 2. References

For related documents and software, please visit:

[GreenPAK Programmable Mixed-Signal Products | Renesas](#)

Download our free Go Configure Software Hub [1] to open the .gp files [2] and view the proposed circuit design. Use the GreenPAK development tools [3] to freeze the design into your own customized IC in a matter of minutes. Renesas provides a complete library of application notes [4] featuring design examples as well as explanations of features and blocks within the Renesas IC.

[1] [Go Configure Software Hub](#), Software Download and User Guide, Renesas Electronics

[2] [AN-1126 ASM to Synchronous Conversion.gp](#), GreenPAK Design File, Renesas Electronics

[3] [GreenPAK Development Tools](#), GreenPAK Development Tools Webpage, Renesas Electronics

[4] [Application Notes](#), GreenPAK Application Notes Webpage, Renesas Electronics

### 3. Introduction

State machines are frequently used to make complex devices. They help in determining signal sequencing and highlight how parameters get changed on state transitions etc. Two of the possible state machines types are: synchronous and asynchronous.

Asynchronous state machines (aka ASMs, as found in GreenPAK) perform transitions from one state to the other as soon as the required condition (High level signal) appears on the desired input.

Synchronous state machines (SSM) do transitions on the edge of an incoming clock if the transition condition is met. A Synchronous state machine implementation is suitable for certain designs.

This application note describes how to convert the GreenPAK asynchronous state machine into a synchronous state machine.

### 4. Synchronous State Machine Design

It is difficult to define a generic approach to convert an ASM into a SSM, since every state machine is unique.

In the case of a simple state diagram (when there are different conditions for different transitions and each state is used only once) it is enough to just add DFFs (see [Figure 1](#)).

In the case of a complex state diagram, it is not enough to just add DFFs, because some states could get used many times and they should be reset periodically as needed.

Since the ASM in the GreenPAK makes a transition on the High level (and not on the edge), it seems like the simplest solution would be to use an edge detector for generating a clock signal with a logical AND gate (see [Figure 2](#)) for each transition condition.



Figure 1. Adding synchronization to ASM

However, because it is possible for the edge detector pulse width to be greater than the ASM transition time, this solution doesn't guarantee that the ASM will make only one transition on a clock signal edge. The reliability of such circuits is based on the propagation delay difference, (between the ASM transition and the block which causes the transition: edge detector) which varies from chip to chip, depending on the VDD and temperature. All this makes such a solution unreliable and not recommended.

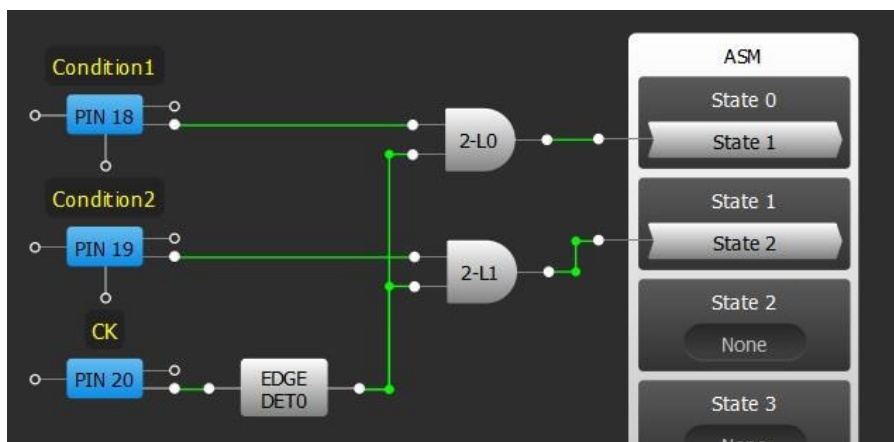


Figure 2. "Edge detector" solution

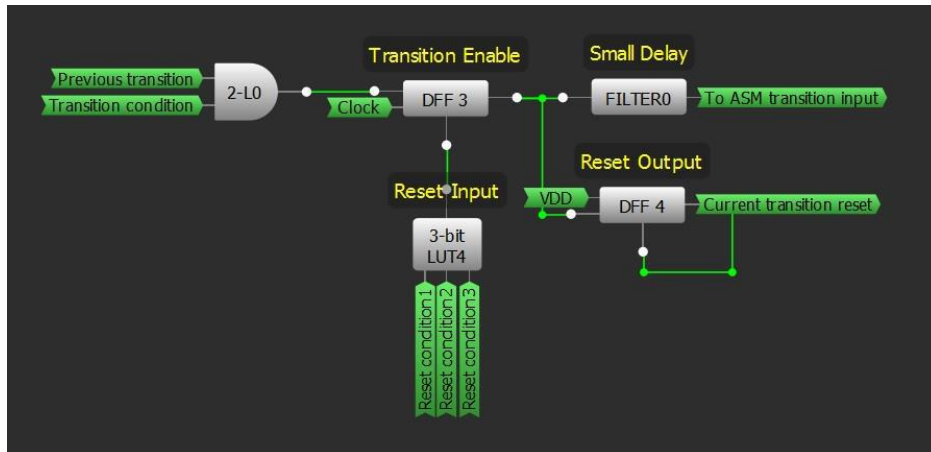
## ASM to Synchronous Conversion

Conversely, we can try to monitor the ASM outputs OUT0..OUT7 to catch a transition event and to enable / disable further transitions. Unfortunately, this is also not the best solution since some blocks might be too slow to prevent the next transition. The propagation delay difference issue takes place in this case as well.

This means that a circuit should clearly know in which state the ASM currently is and to which state the transitions will take it to. Only in such a case will SSM be stable and reliable.

To do this, one more state machine should be created using the internal blocks. On one hand, it seems inappropriate to create an additional state machine for the ASM to become a SSM; On the other hand though, the additional state machine will be simpler, and will have 64 bits of ASM RAM available.

In this case, for each ASM transition specific block, the circuit elements shown in [Figure 3](#) should be added.



**Figure 3. General synchronization block structure**

The DFF3 provides the transition to the desired state from the previous one on the rising edge of clock signal if the defined (by 2-L0 connections) condition is asserted.

The DFF3 can generate (using DFF4) reset for other “transition DFFs” after ASM transitions (proper sequence is provided by adding small delay – Filter0), if necessary. Also it can reset itself and other “transition DFFs” (connections to 3-L4).

This circuit is universal and not all elements are required for each transition, so it can be simplified; if desired.

RAM								
State name	Connection Matrix Output RAM							
	OUT7	OUT6	OUT5	OUT4	OUT3	OUT2	OUT1	OUT0
State 0	0	0	0	0	0	0	0	1
State 1	0	0	0	0	0	0	1	0
State 2	0	0	0	0	0	1	0	0
State 3	0	0	0	0	1	0	0	0
State 4	0	0	0	1	0	0	0	0
State 5	0	0	1	0	0	0	0	0
State 6	0	1	0	0	0	0	0	0
State 7	1	0	0	0	0	0	0	0

**Figure 4. ASM RAM**

As an example, a state diagram (see [Figure 6](#)) was chosen. There are only two points where some of the DFFs will be reset: State0 -> State1 (DFF3, DFF4, DFF5) and State2 -> State3 (DFF4, DFF6, DFF7) transitions. Such a combination ensures the reset of all the DFFs when required except for DFF1 (as this transition can be used only once).

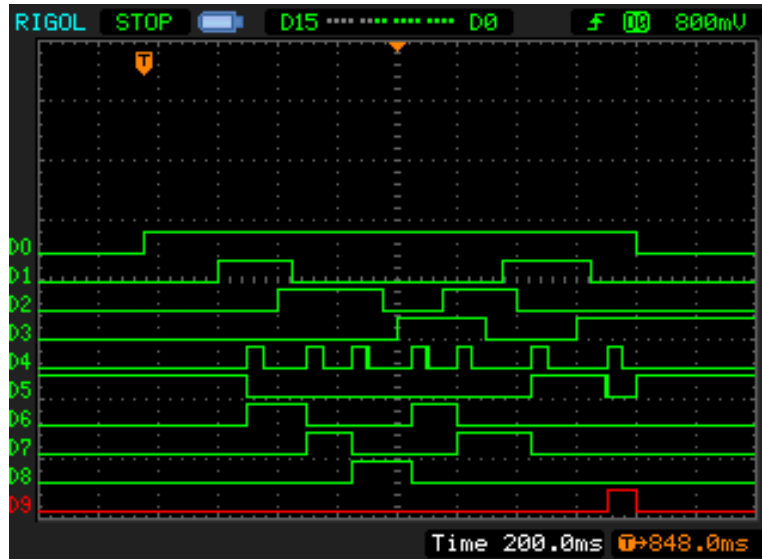


Figure 5. Synchronous State Machine transitions

The GreenPAK Design circuit is shown in Figure 7, and the corresponding waveforms in Figure 5 where:

- D0 – PIN#10 (ASM Reset)
- D1 – PIN#18 (Condition1)
- D2 – PIN#19 (Condition2)
- D3 – PIN#17 (Condition3)
- D4 – PIN#20 (CK)
- D5 – PIN#3 (OUT0)
- D6 – PIN#4 (OUT1)
- D7 – PIN#5 (OUT2)
- D8 – PIN#6 (OUT3)
- D9 – PIN#7 (OUT4)

OUT0..OUT7 outputs reflect current state (see ASM RAM – Figure 4).

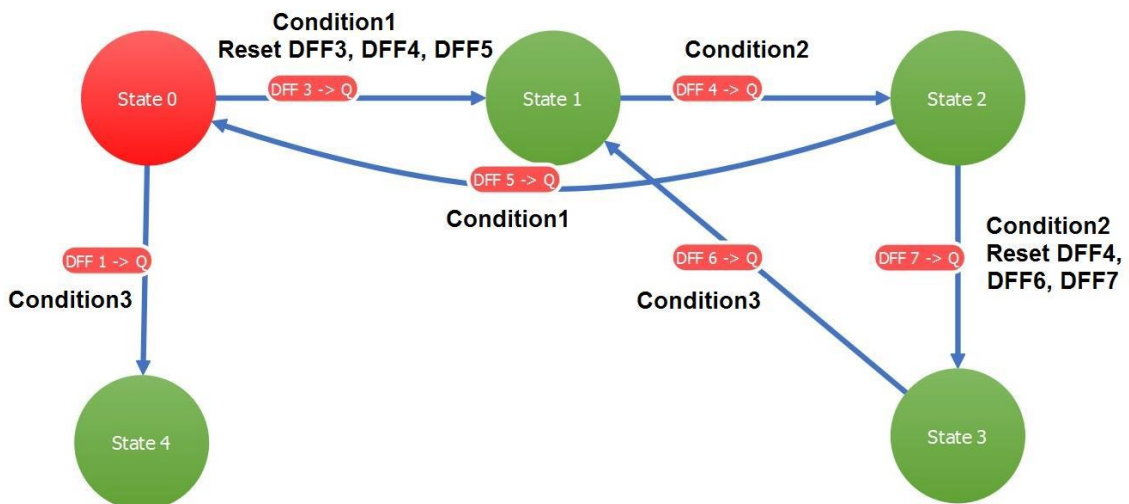


Figure 6. ASM state diagram

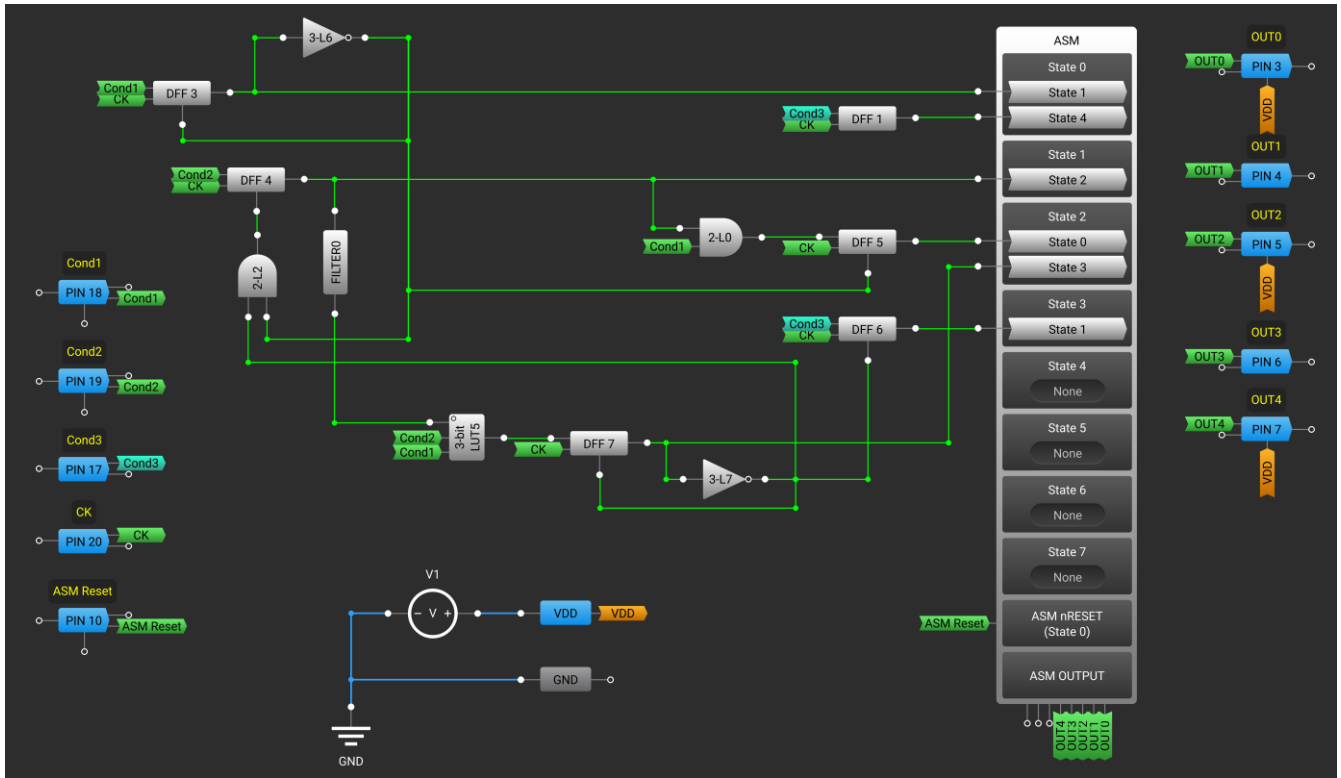


Figure 7. GreenPAK Design circuit

## 5. Conclusion

It was shown that by using additional internal blocks within the GreenPAK IC, its asynchronous state machine can be converted into a reliable synchronous state machine design.

## 6. Revision History

Revision	Date	Description
1.00	October 16, 2016	Initial release.
2.00	April 27, 2026	The part number has been changed from SLG46531V to SLG46537V.

## IMPORTANT NOTICE AND DISCLAIMER

RENESAS ELECTRONICS CORPORATION AND ITS SUBSIDIARIES (“RENESAS”) PROVIDES TECHNICAL SPECIFICATIONS AND RELIABILITY DATA (INCLUDING DATASHEETS), DESIGN RESOURCES (INCLUDING REFERENCE DESIGNS), APPLICATION OR OTHER DESIGN ADVICE, WEB TOOLS, SAFETY INFORMATION, AND OTHER RESOURCES “AS IS” AND WITH ALL FAULTS, AND DISCLAIMS ALL WARRANTIES, EXPRESS OR IMPLIED, INCLUDING, WITHOUT LIMITATION, ANY IMPLIED WARRANTIES OF MERCHANTABILITY, FITNESS FOR A PARTICULAR PURPOSE, OR NON-INFRINGEMENT OF THIRD-PARTY INTELLECTUAL PROPERTY RIGHTS.

These resources are intended for developers who are designing with Renesas products. You are solely responsible for (1) selecting the appropriate products for your application, (2) designing, validating, and testing your application, and (3) ensuring your application meets applicable standards, and any other safety, security, or other requirements. These resources are subject to change without notice. Renesas grants you permission to use these resources only to develop an application that uses Renesas products. Other reproduction or use of these resources is strictly prohibited. No license is granted to any other Renesas intellectual property or to any third-party intellectual property. Renesas disclaims responsibility for, and you will fully indemnify Renesas and its representatives against, any claims, damages, costs, losses, or liabilities arising from your use of these resources. Renesas' products are provided only subject to Renesas' Terms and Conditions of Sale or other applicable terms agreed to in writing. No use of any Renesas resources expands or otherwise alters any applicable warranties or warranty disclaimers for these products.

(Disclaimer Rev.1.01)

### Corporate Headquarters

TOYOSU FORESIA, 3-2-24 Toyosu,  
Koto-ku, Tokyo 135-0061, Japan  
[www.renesas.com](http://www.renesas.com)

### Trademarks

Renesas and the Renesas logo are trademarks of Renesas Electronics Corporation. All trademarks and registered trademarks are the property of their respective owners.

### Contact Information

For further information on a product, technology, the most up-to-date version of a document, or your nearest sales office, please visit [www.renesas.com/contact-us/](http://www.renesas.com/contact-us/).