

## RX72M Group

R01AN6978EJ0100

Rev.1.00

## Communications Board CC-Link IE TSN Class A Startup Manual

Aug. 31, 2023

### Introduction

This is a quick start guide to running CC-Link IE TSN Class A communication on the RX72M CPU Card for evaluating industrial networks.

### Target Device

RX72M Group

### Sample Program

This sample program uses the CC-Link IE TSN Class A stack evaluation version of our partner Sherpa Co., Ltd. The stack's major communications specifications are as follows.

- Transfer protocol: CC-Link IE TSN Class A Version 2.0
- Security policy: None

For purchase of the official version of the stack and the specifications of the sample program, contact Sherpa Inc.

[Sherpa Inc. | Providing a Complete Suite of Real-time Solutions from Sherpa Inc. in Japan \(sherpa-tech.jp\)](https://www.sherpa-tech.jp)

### [Restrictions]

The evaluation version CC-Link IE TSN Class A stack has the following functional restrictions.

This version is only made available for purposes of evaluation.

- The evaluation stack automatically stops running after 90 minutes. Re-starting the program requires resetting the device.

This stack cannot be used for embedding in commercial products. In that case, please consider purchasing the official version.

## Contents

1. Operating Environment.....	3
2. Setting up and Connecting the Evaluation Board.....	4
2.1 Setting up the Board.....	4
2.2 Selecting the Power Source .....	4
3. Installing the e <sup>2</sup> studio.....	5
3.1 Installing the CC-RX Compiler V3.01.00.....	5
3.2 How to check the registered Compiler .....	5
4. Importing a Sample Project to the e <sup>2</sup> studio .....	7
5. Programming and Debugging .....	9
6. Appendix .....	13
6.1 Verifying Operation of the Sample Program .....	13
6.1.1 Operation check using GX-Works3.....	13
6.1.2 Connection configuration.....	14
6.1.2.1 Connection with the Communication Board.....	14
6.1.2.2 CSP+ file registration .....	15
6.1.2.3 Start the sample project. ....	15
6.1.2.4 Download .....	16
6.1.2.5 Connection confirmation.....	18
Revision History .....	20

## 1. Operating Environment

The sample programs in this manual assumes the following environment.

**Table 1.1 Operating Environment**

Item	Description
Board	Tessera Technology RX72M communications board Model name: TS-TCS07298
CPU	RX CPU (RXv3)
Operating frequency	CPU clock (CPUCLK): 240 MHz
Operating voltage	3.3 V
Operating modes	Single chip mode
Device requirements	R5F572MNDDBD <ul style="list-style-type: none"><li>Code flash memory Capacity: 4 Mbytes ROM cache: 8 Kbytes</li><li>Data flash memory Capacity: 32 Kbytes</li><li>RAM/extended RAM Capacity: 512 Kbytes / 512 Kbytes</li></ul>
Communications protocol	OPC UA (UA-Binary)
Integrated development environment	e <sup>2</sup> studio (V7.5.0 or later) with the CC-RX compiler (V3.01.00)
Emulator (ICE)	Renesas Electronics E2 Lite

## 2. Setting up and Connecting the Evaluation Board

For detailed information on this board, refer to the "RX72M Communications Board Hardware Manual" (R01AN4661EJ0100).

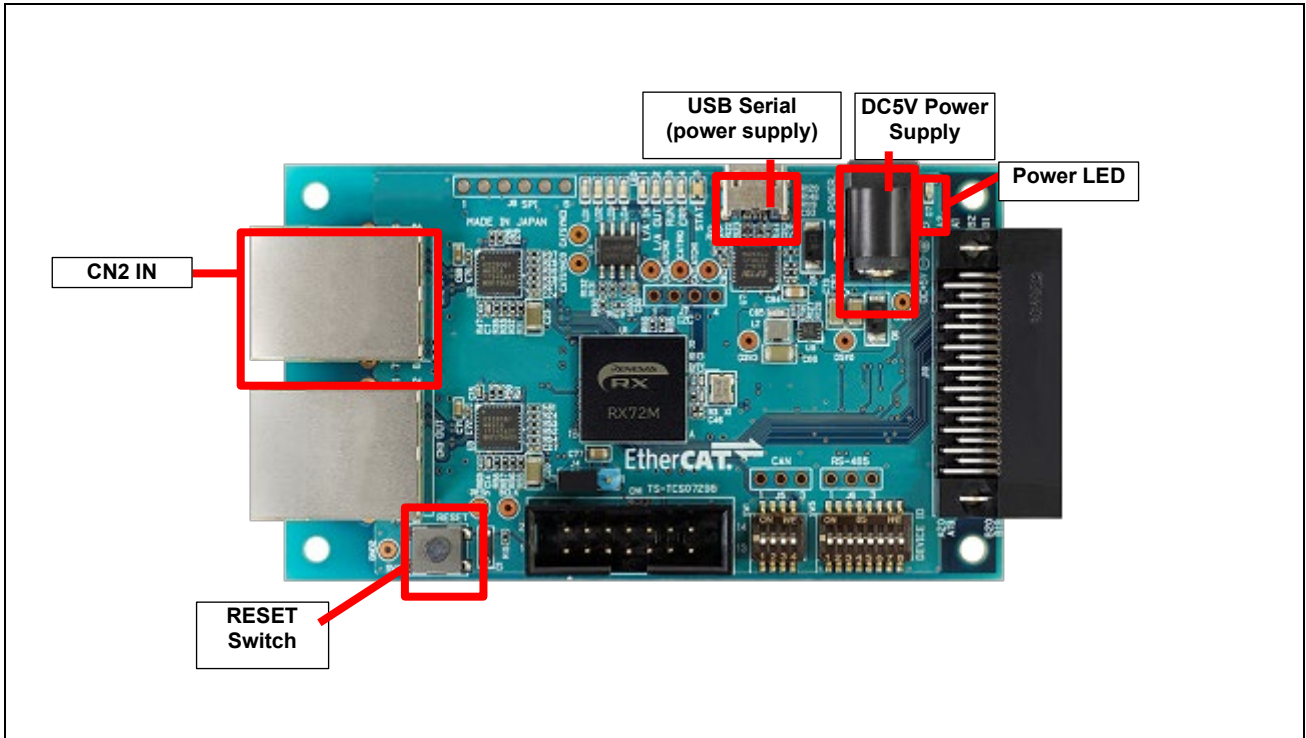


Figure 2.1 Configuration of the RX72M Communications Board

### 2.1 Setting up the Board

Set the jumper pins before powering on the communication board. Set the JTAG configuration mode with jumper pin J4. Usually, it is used at 2-3 short of jumper pin.

For the detailed locations of the related parts, refer to the *RX72M Communications Board Hardware Manual*.

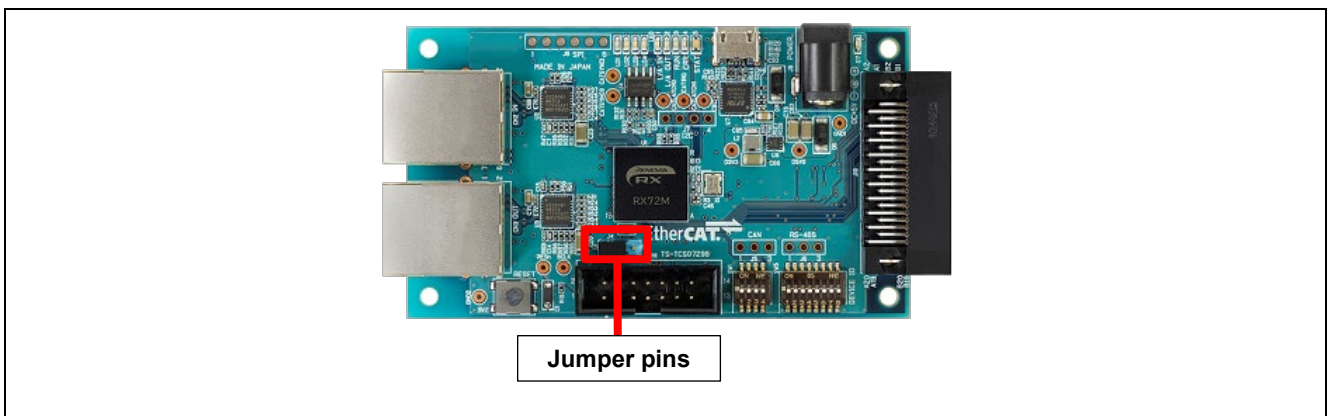


Figure 2.2 Setting up Jumper Pins

### 2.2 Selecting the Power Source

Power to the RX72M can be supplied from a 5-V DC power source or through the USB port. Use whichever is suitable for the configuration of your operating environment.

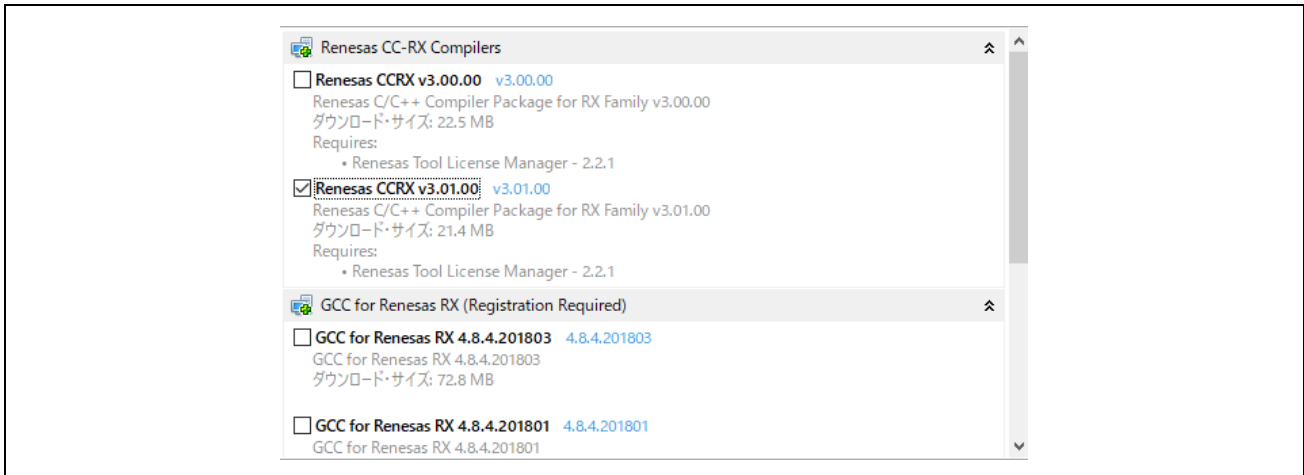
### 3. Installing the e<sup>2</sup> studio

Download the e<sup>2</sup> studio for RX72M (V7.5.0 or later) from the Web site below.

[https://www.renesas.com/e2studio\\_download](https://www.renesas.com/e2studio_download)

#### 3.1 Installing the CC-RX Compiler V3.01.00

The compiler selection dialog box appears while installing the e<sup>2</sup> studio. Click [Renesas CCRX v3.01.00] and select [Next]. CC-RX V3.01.00 Compiler for RX72M will be installed with the e<sup>2</sup> studio.

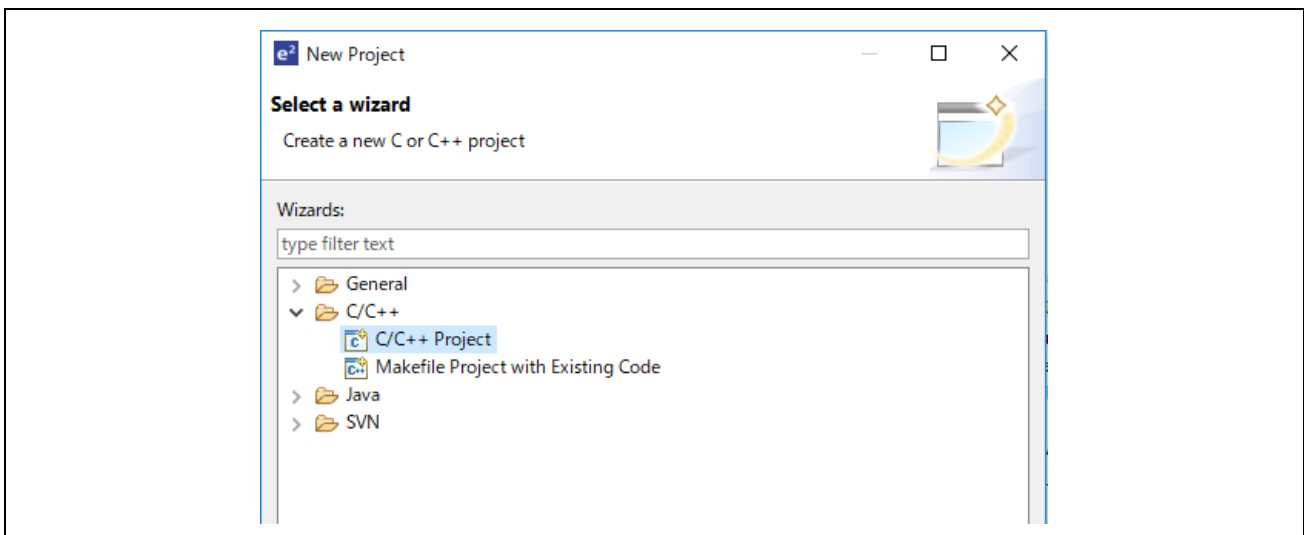


To start the e<sup>2</sup> studio, execute "e2studio.exe" in the following installation folder.

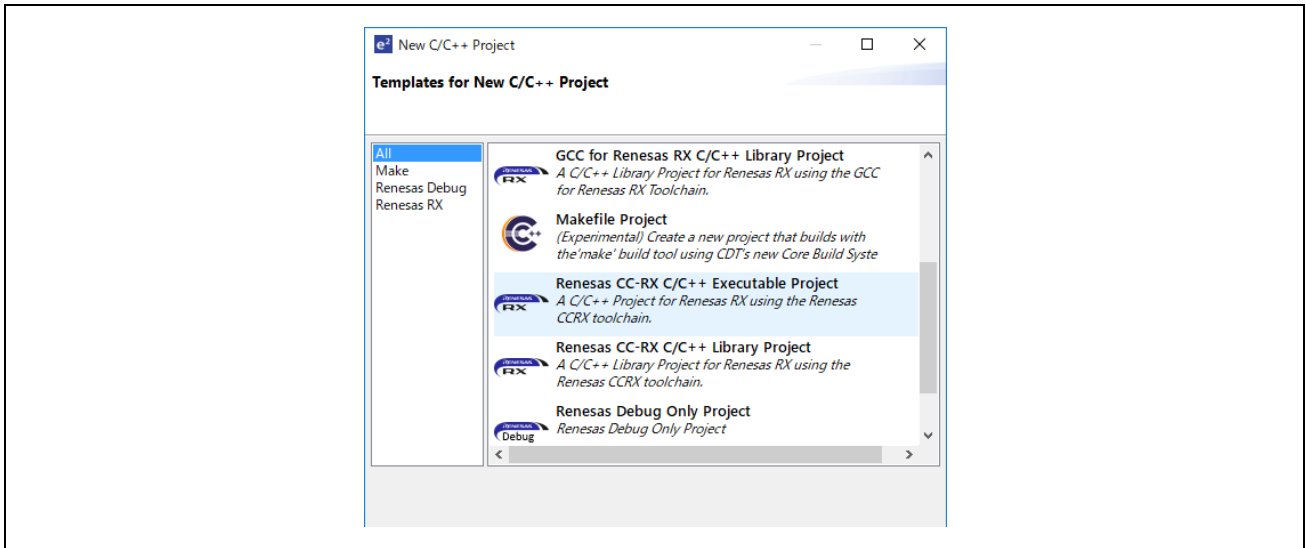
e2\_studio\_rx72m\eclipse

#### 3.2 How to check the registered Compiler

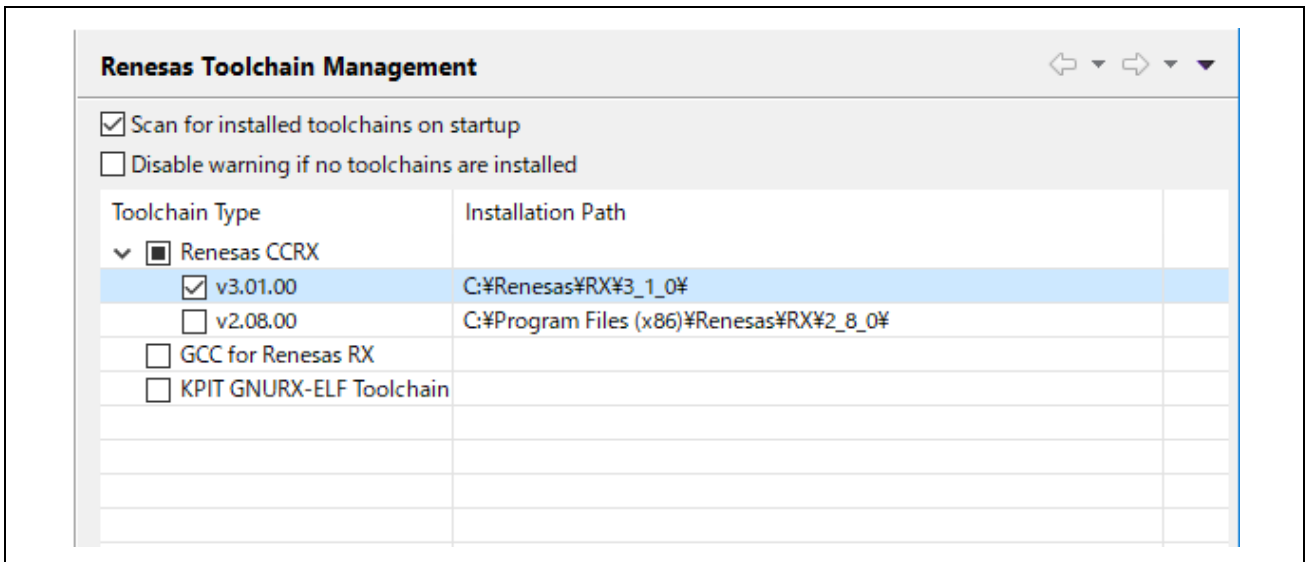
- (1) Start the e2 studio.
- (2) Select [File] → [New] → [C/C++Project] → [Next].



- (3) In the [Templates for New C/C++ Project] dialog box, select [Renesas RX] → [Renesas CC-RX C/C++ Executable Project] → [Next].

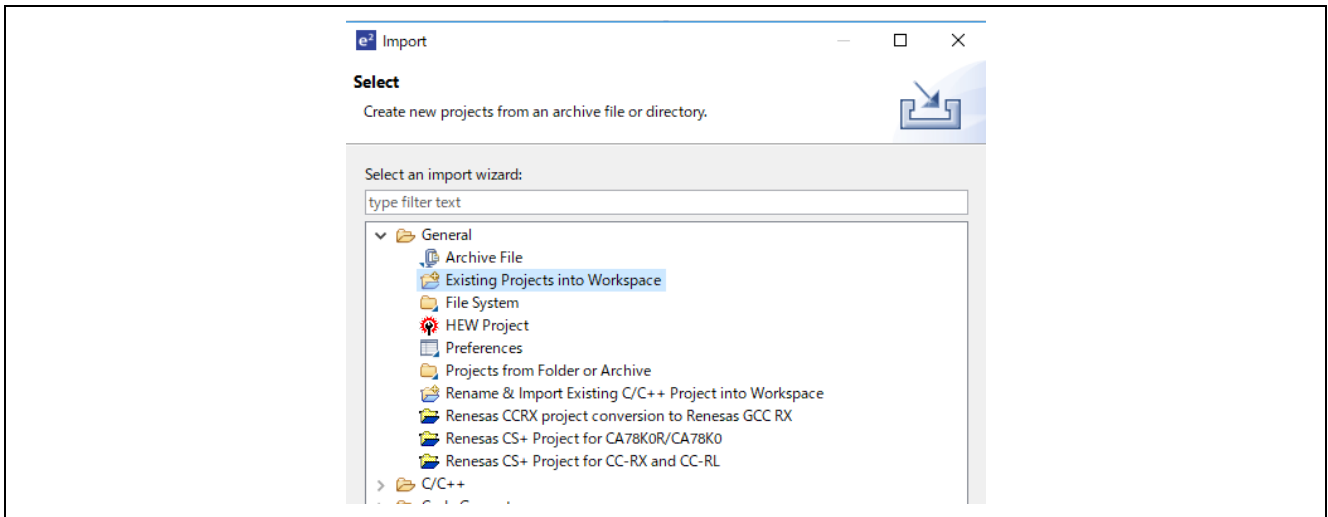


- (4) In the [New Renesas CC-RX C/C++ Executable Project] dialog box, enter a desired project name and select [Next].
- (5) In the [Select toolchain, device & debug settings] dialog box, select [Manage Toolchains...] under [Toolchain Settings].
- (6) In the [Renesas Toolchain Management] dialog box, the registration was successful if "v3.01.00" has been added under "Renesas CCRX".

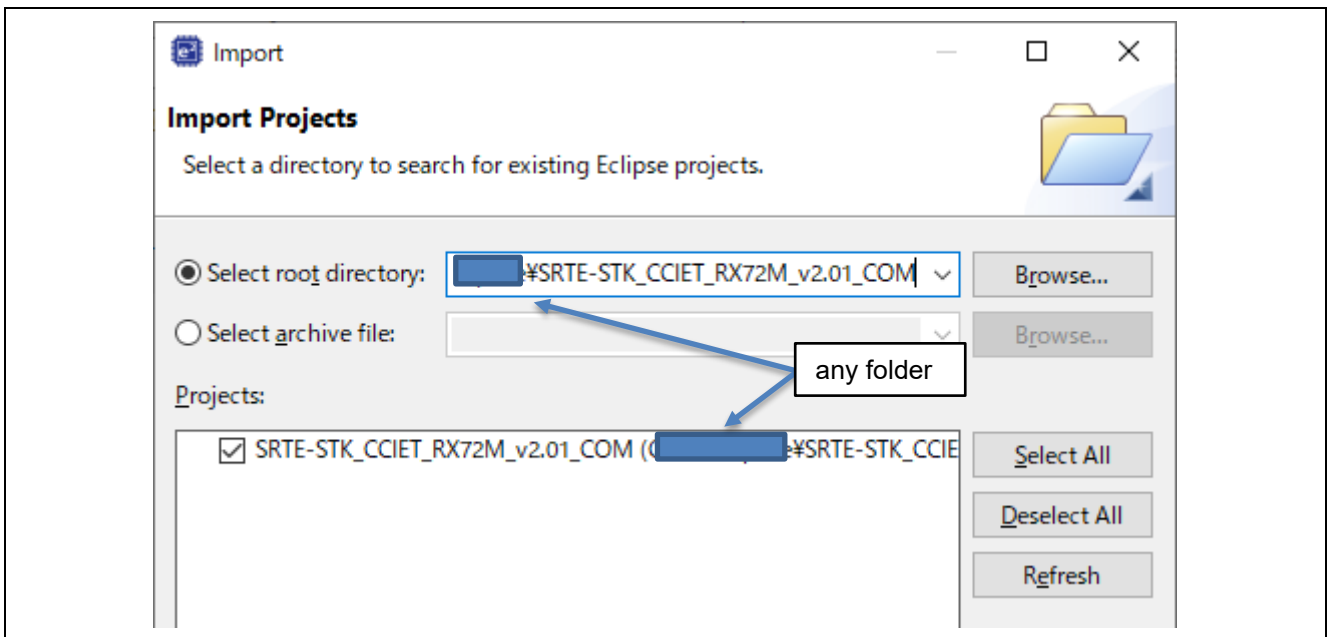


#### 4. Importing a Sample Project to the e<sup>2</sup> studio

- (1) Extract the archived sample project and store it in any folder.
- (2) Select [File] → [Import].
- (3) In the [Select] dialog box, select [General] → [Existing Projects into Workspace] and select [Next].

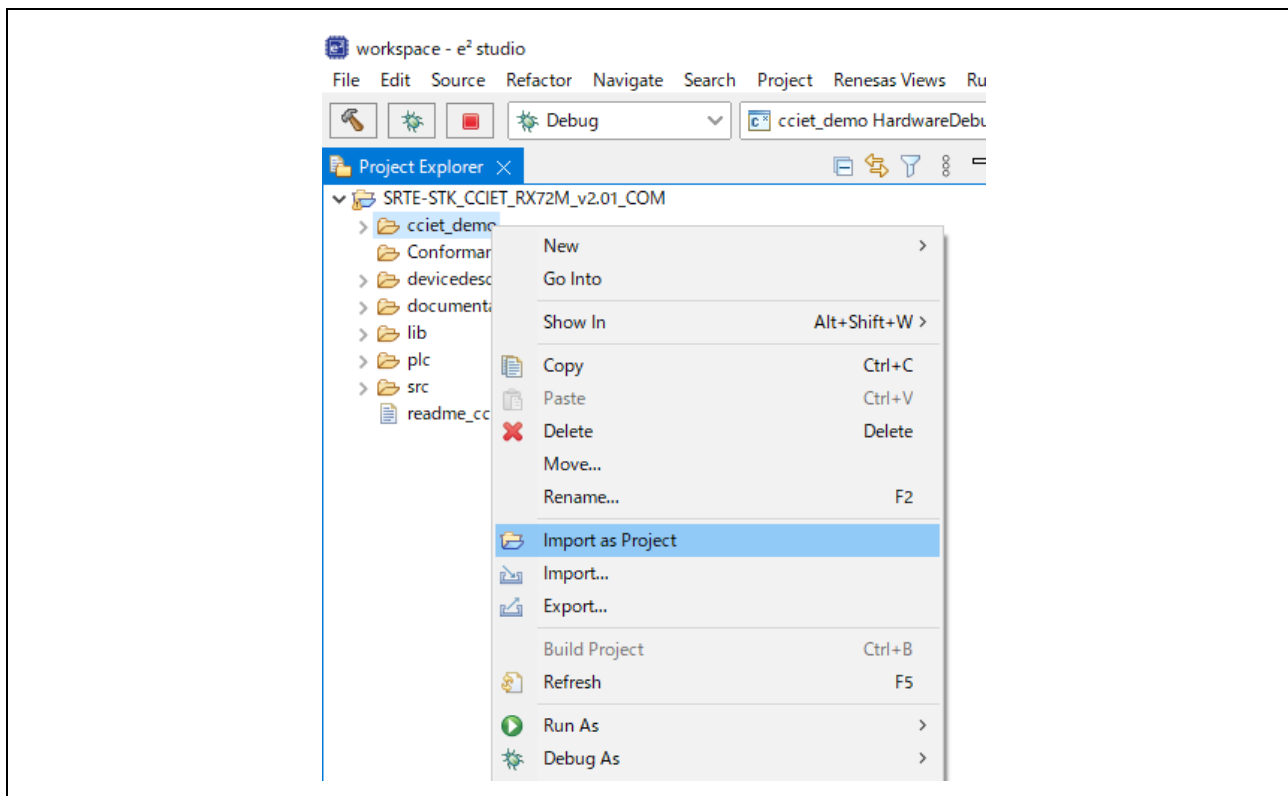


- (4) In the [Import Projects] dialog box, check the "Select archive file:" button, then select [Browse...].
- (5) Select the "SRTE-STK\_CCIET\_RX72M\_v\*\*\*\_COM" folder of the sample project stored in any folder in (1), and select [Open].



Check "SRTE-STK\_CCIET\_RX72M\_v\*\*\*\_COM (\SRTE-STK\_CCIET\_RX72M\_v\*\*\*\_COM)" under the "Projects" label and select [Next]. The project will be imported into the workspace.

- (6) Right-click the "cciet\_demo" folder and select [Import Project] from the submenu. This will import the project file of the sample program, and will be able to build and run it.

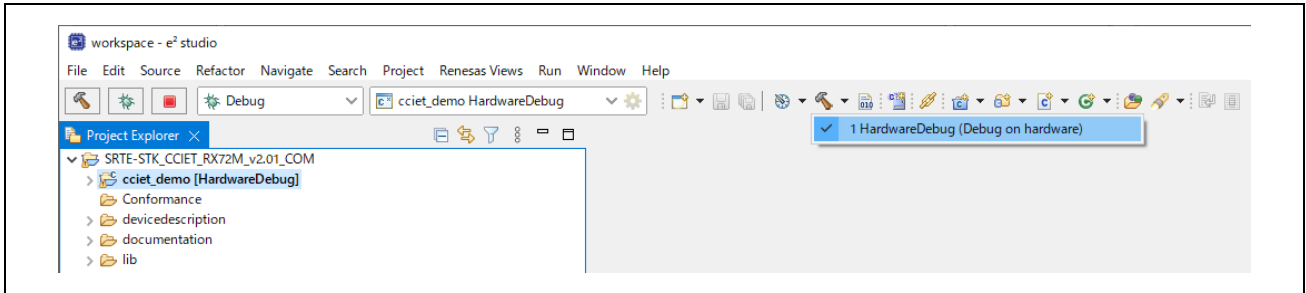




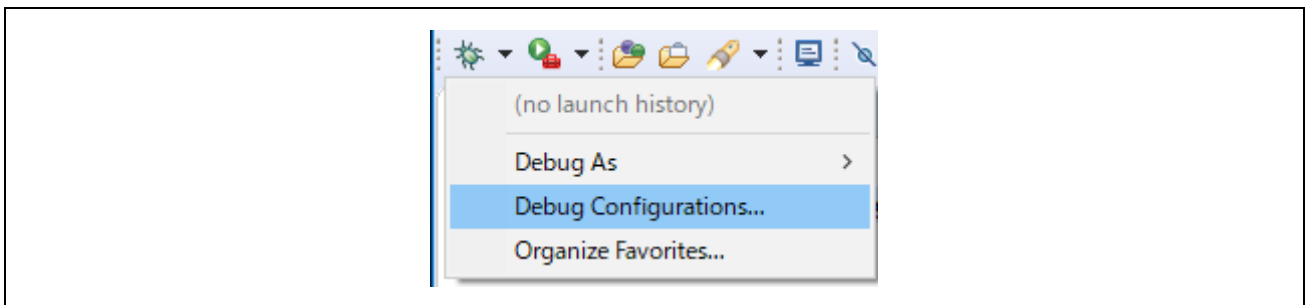
### 5. Programming and Debugging

- (1) Select the "cciet\_demo" project in the Project Explorer view. Select the arrow next to the build button (hammer icon) and select [HardwareDebug] from the drop-down menu.

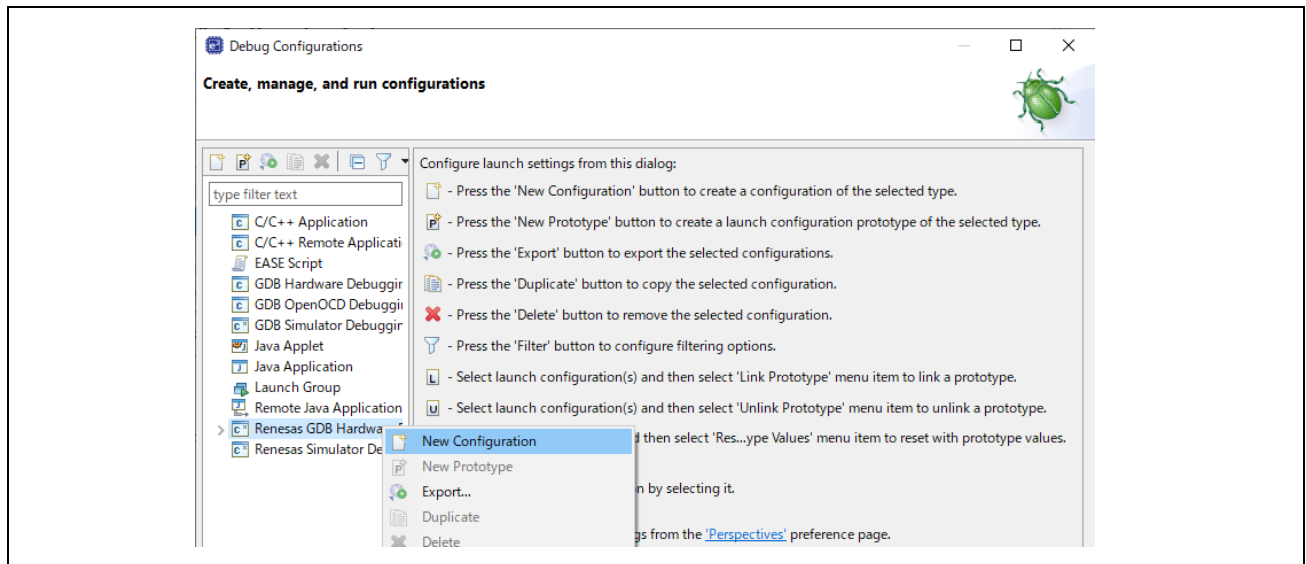
Selecting [Hardware Debug], e2 studio will build the project.

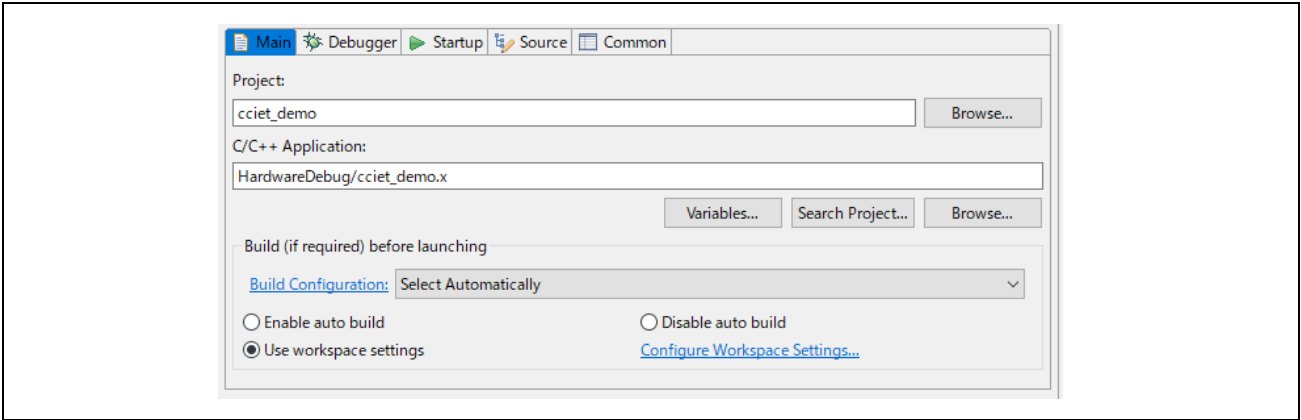


- (2) e2 studio will build the project. After the build is completed, select the arrow next to the debug button (bug icon). You can start debugging by selecting [Debug Configurations...].

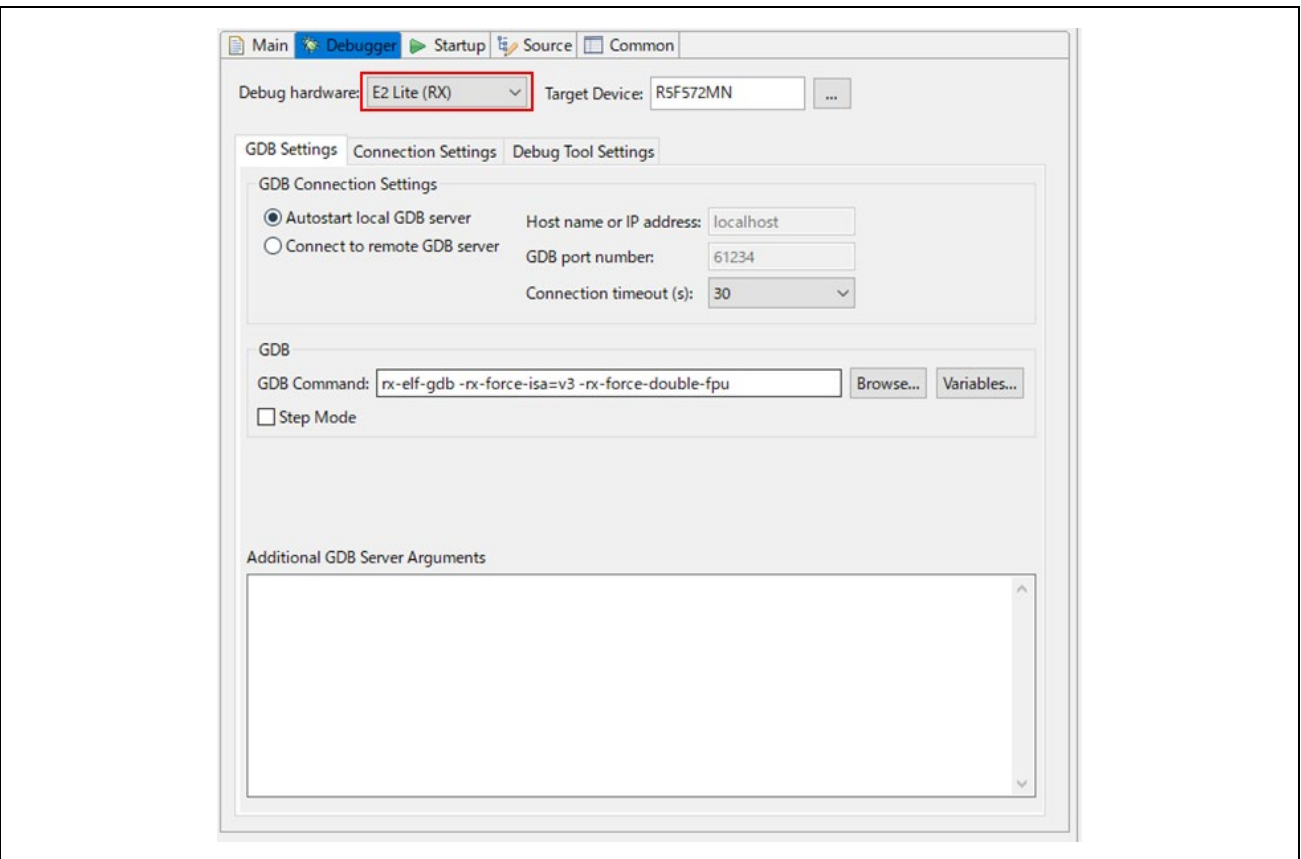


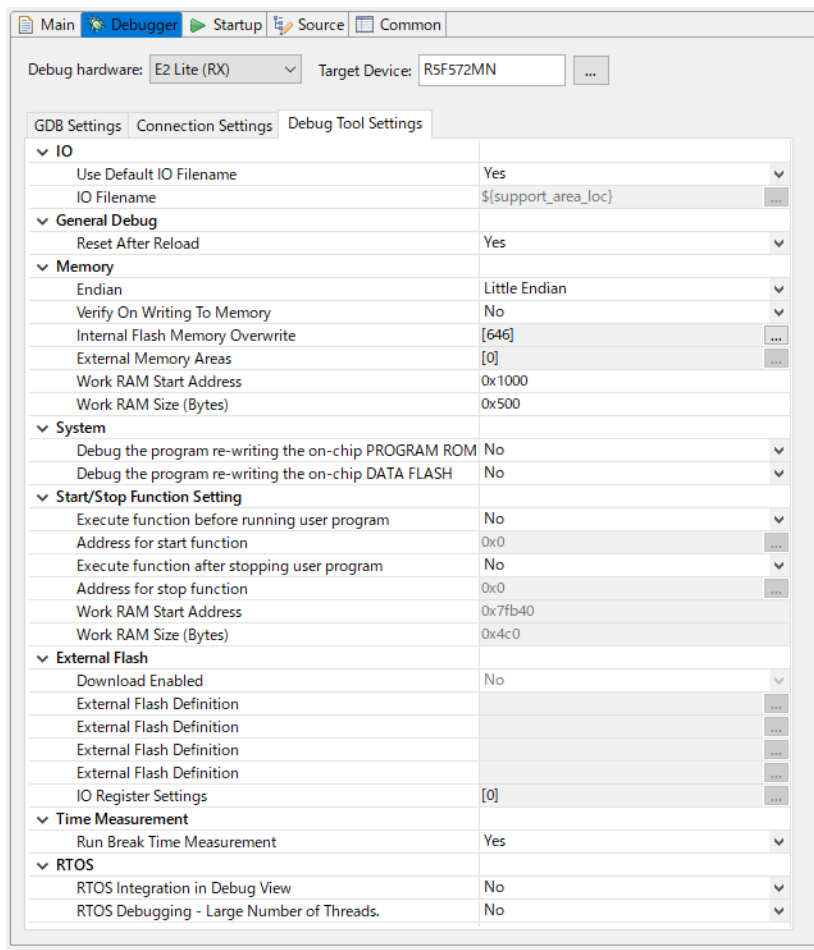
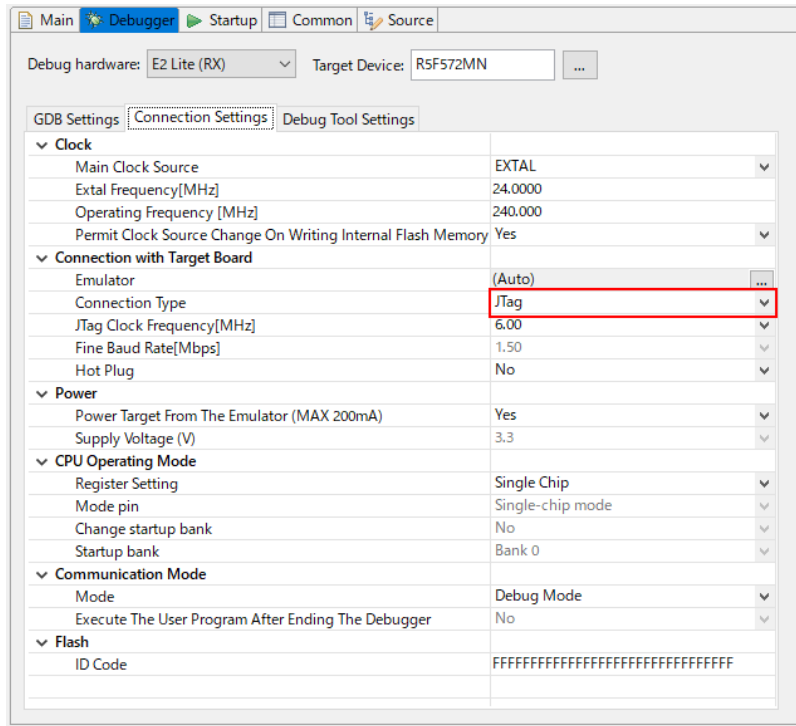
- (3) Make debugger settings. A setting example is as follows.



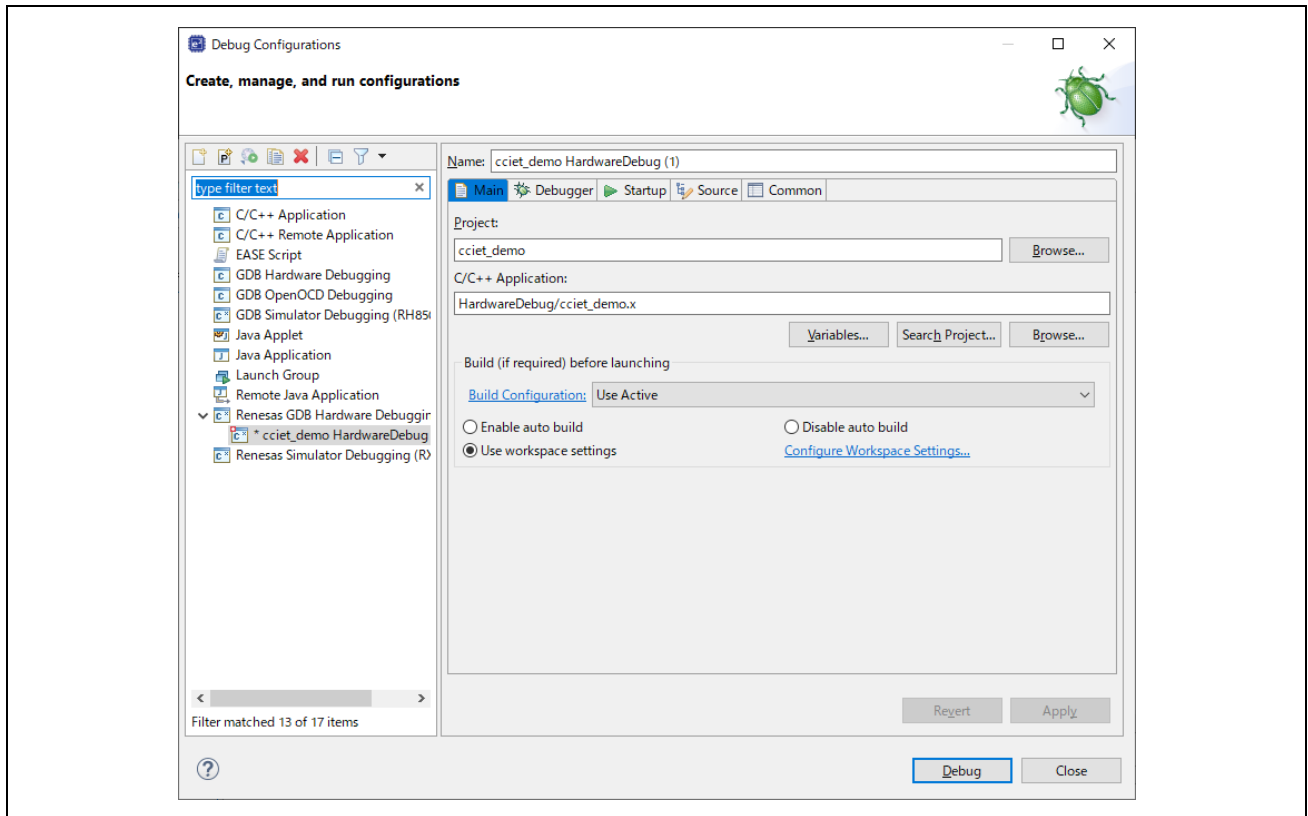


Configure E2Lite settings. When connecting, set the emulator type to "E2Lite" and the communication interface to "JTAG".





- (4) After setting the debugger, click the [Debug] button to download the program to the target.



- (5) If a firewall warning is displayed for "e2-server-gdb.exe", check the checkbox for [Private networks, such as my home or work network] and select [Allow access].
- (6) The User Account Control (UAC) dialog box may appear. Enter the administrator's password and select [Yes].
- (7) If the Confirm Perspective Switch dialog box appears prompting you to switch the perspective, check the checkbox for [Remember my decision] and select [Yes].
- (8) After downloading the code, select the [Resume] button to run the code. The code will break at the address where the main function starts. Select the [Resume] button again to continue to run the code.

## 6. Appendix

### 6.1 Verifying Operation of the Sample Program

Operation of the sample program can be verified as follows.

#### 6.1.1 Operation check using GX-Works3

CC-Link IE TSN communication can be checked using Mitsubishi Electric's sequencer (PLC) MELSEC iQ-R series RJ71GN11-T2 as the master station.

The table below shows examples of sequencer unit combinations.

**Table 6.1 List of Devices**

	Unit type	Model No
Base	basic base unit	R35B
Power supply	Power supply unit	R61P
CPU	Sequencer CPU unit	R04CPU
Network	CC-Link IE TSN master/local module	RJ71GN11-T2

Note: Refer to the following manual for the connection method and how to use each unit.

- MELSEC iQ-R Module Configuration Manual (SH-081222)
- MELSEC iQ-R CPU Module User's Manual (Startup) (SH-081223)
- MELSEC iQ-R CC-Link IE TSN User's Manual (Startup) (SH-082126)

This section describes the procedure for checking communication using a sequencer that combines these units and its engineering tool GX Works3.

### 6.1.2 Connection configuration

Connect each cable below.

- (a) Connect the Ethernet cable of the evaluation board and the network unit of the sequencer
- (b) Connect the sequencer CPU unit and PC with a USB (miniB) cable

After connecting, confirm that the RUN/STOP/RESET switch of the CPU unit of the sequencer is set to STOP (program stop), and then turn on the power of the sequencer.

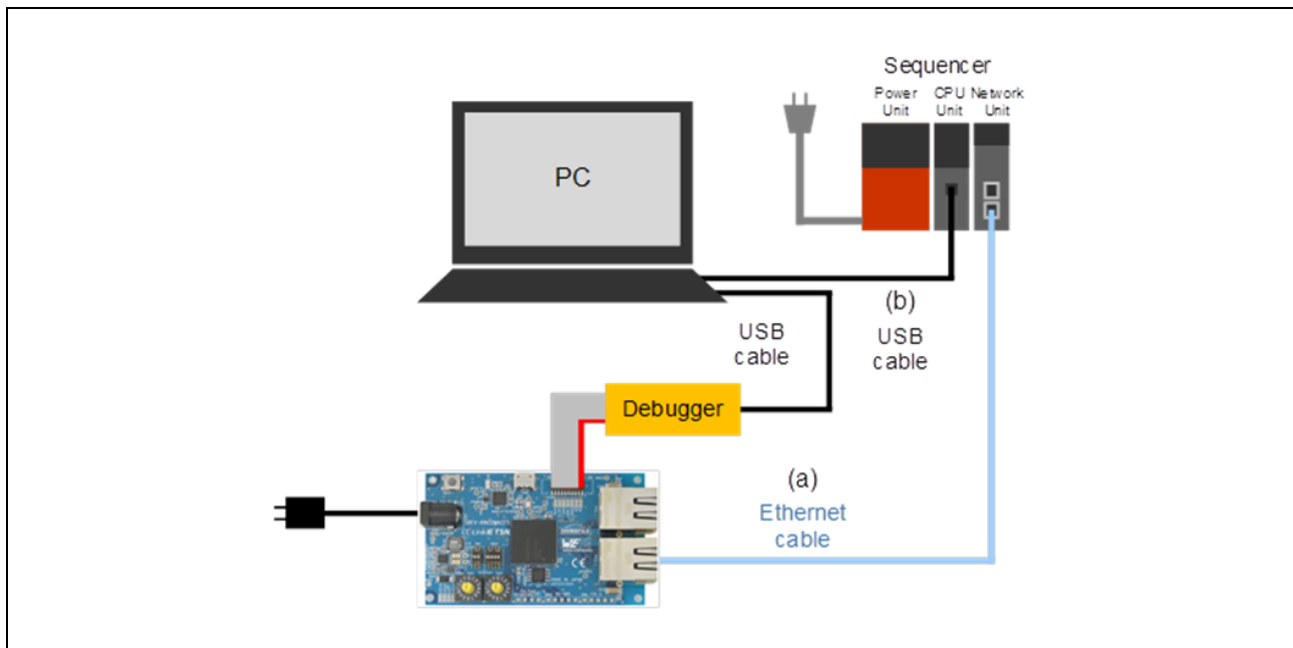


Figure 6.1 Connection configuration

#### 6.1.2.1 Connection with the Communication Board

IP address set in the sample program is set to "192.168.1.10".

When changing the IP address, please change the following IP address settings.

```
\src\sample\sda1\appl_arm_itron\demo_setup.h
Change DEFAULT_IPADDRESS in #if defined _CCIET_
```

```
#define DEFAULT_IPADDRESS 0xC0A8010A /* IP address (192.168. 1. 10) The lower 16 bits are ignored,
since setting a CC-Link IE TSN Address Offset. */
```

```
116 /*-----*/
117 CCIETA Slave
118
119 These are default's and demo's macros for CCIETA on RIN_ENGINE.
120 Please change the values of the following macros for your system.
121 /*-----*/
122 #if defined _CCIET_
123 #define DEMO_VENDORID 0x6700^ /* vendor code */
124 #define DEMO_DEVICEID 0x0003^ /* device type */
125 #define DEMO_DEVICE_VERSION 102^^ /* device version */
126 #define DEMO_DEVICE_MODEL_CODE 0x00000001^ /* device model code */
127 #define DEMO_DEVICE_NAME "dut"
128
129 #define DEMO_SERIALNUMBER 1234567890L
130 #define DEMO_PRODUCTNAME "Sherpa-sample-dev"
131 #define DEMO_ORDERID "SDA1-sample-app"
132
133 #define DEFAULT_IPADDRESS 0xC0A8010A^ /* IP address (192.168. 1. 10) The lower 16 bits are ig
134 #define DEFAULT_SUBNETMASK 0xFFFFFFFF^ /* Subnet mask (255.255.255. 0) */
135 #define DEFAULT_GATEWAY 0x00000000^ /* Gateway ( 0. 0. 0. 0) */
136
```

Figure 6.2 IP address setting

IP address "192.168.1.10" is set in the sequencer sample project file.

When changing the IP address, change the sequencer program accordingly.

### 6.1.2.2 CSP+ file registration

Register the CSP+ file included in the sample program to GX Works3.  
CSP+ file is in the following path in the sample program.

CSP+ files:

(root)\devicedescription\cciet\0x6700\_SherpaSamp\_r01\_102\_en.zip

From the GX Works3 menu, select [Tool] - [Profile Management] - [Register] to register the CSP+ file.

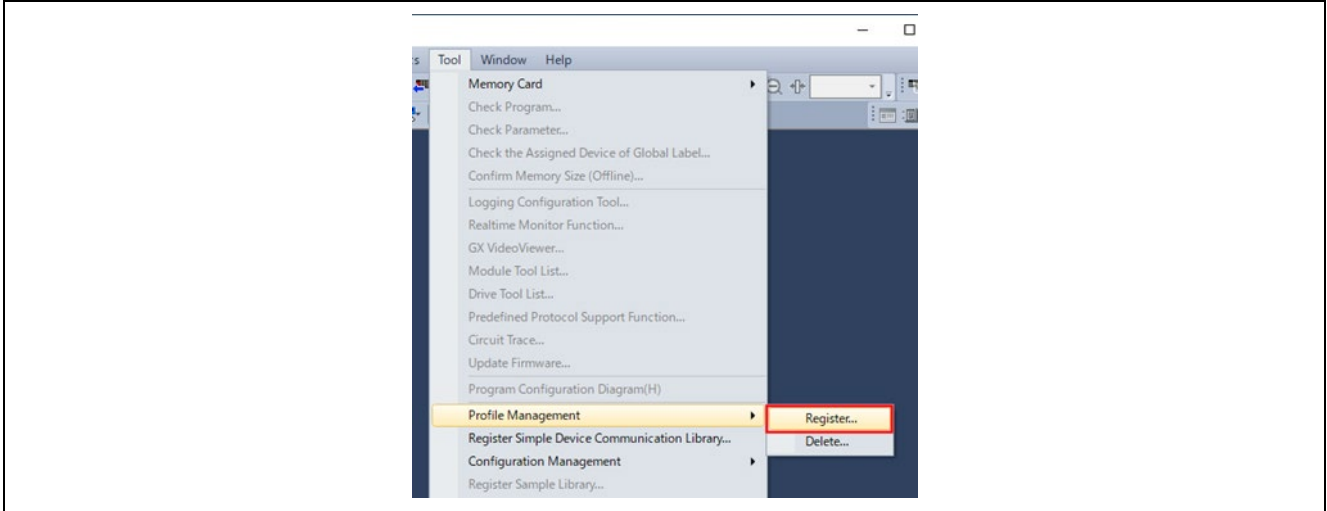


Figure 6.3 Registering CSP+ files

### 6.1.2.3 Start the sample project.

Double-click the sample project file to start GX Works3.  
The project file is in the following path in the sample program.

GX Works3 project file path:

(root)\plc\GxWorks3\SRTE-STK\_CCIET\_RX72M\_R04.gx3

### 6.1.2.4 Download

Follow the steps below to write to the sequencer.

- (1) Select menu [Convert] – [Convert] to build.

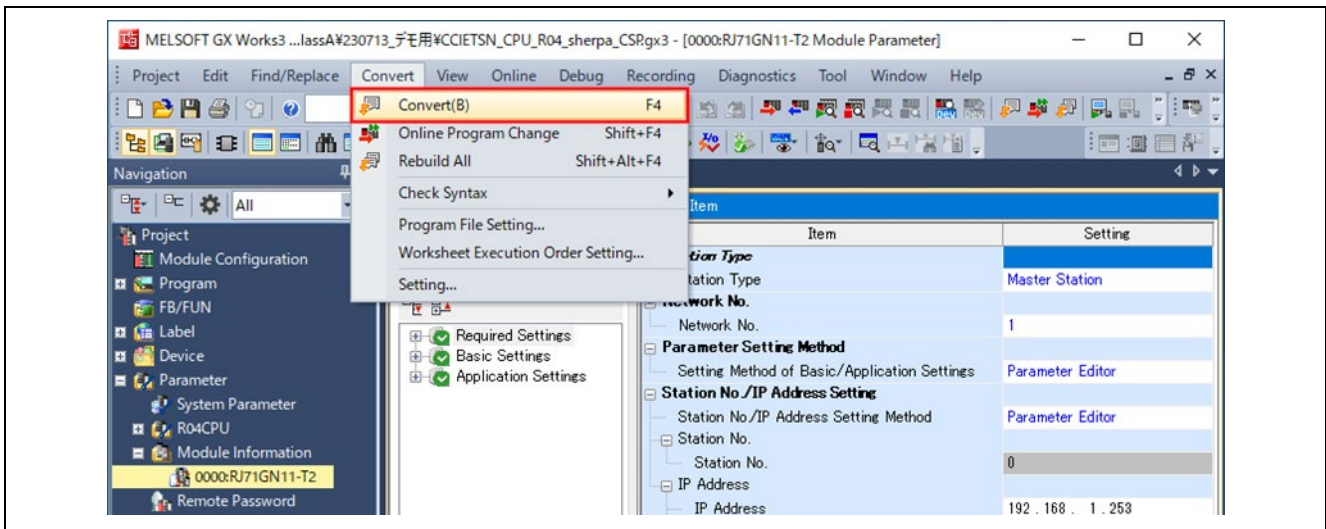


Figure 6.4 GX Works3 download procedure <build display>

- (2) Select the menu [Online] → [Write to PLC] to open the online data operation screen.

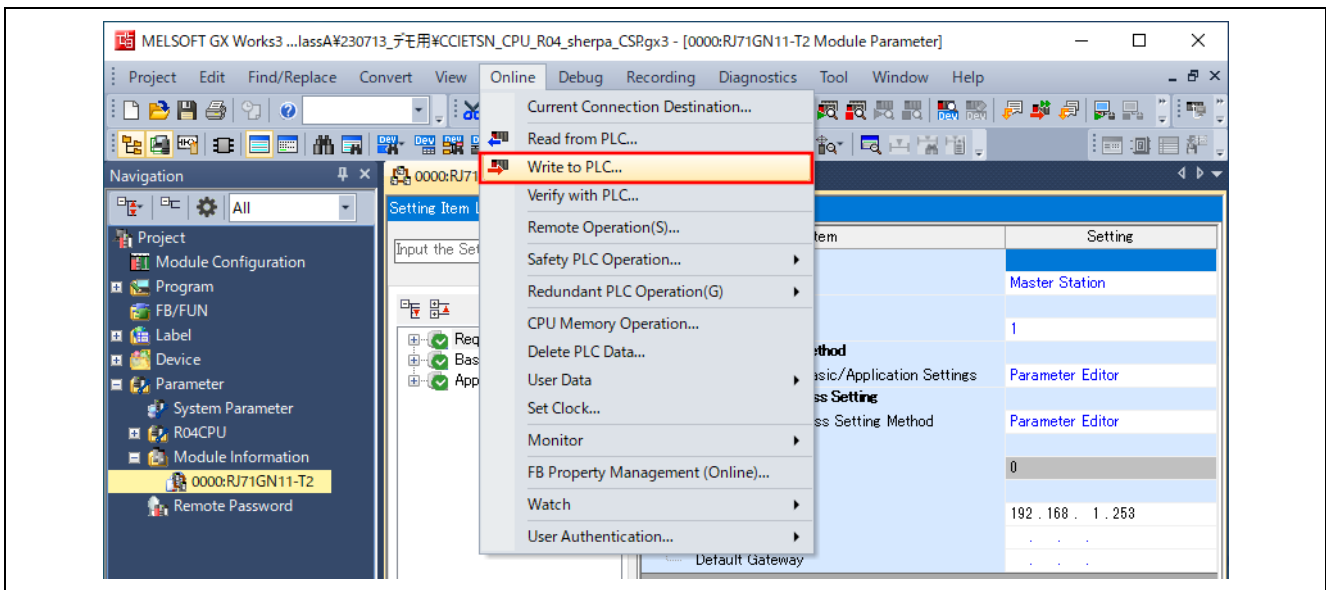


Figure 6.5 GX Works3 download procedure <Main display>



- (3) Click [Select All] for the write target.
- (4) Start writing with [Execute]. (If an overwrite confirmation dialog appears, click [Yes to all].)
- (5) Write to sequencer screen displays the progress of writing to the sequencer, so when writing is complete, click [Close] on the write to sequencer screen and the online data operation screen to close them.

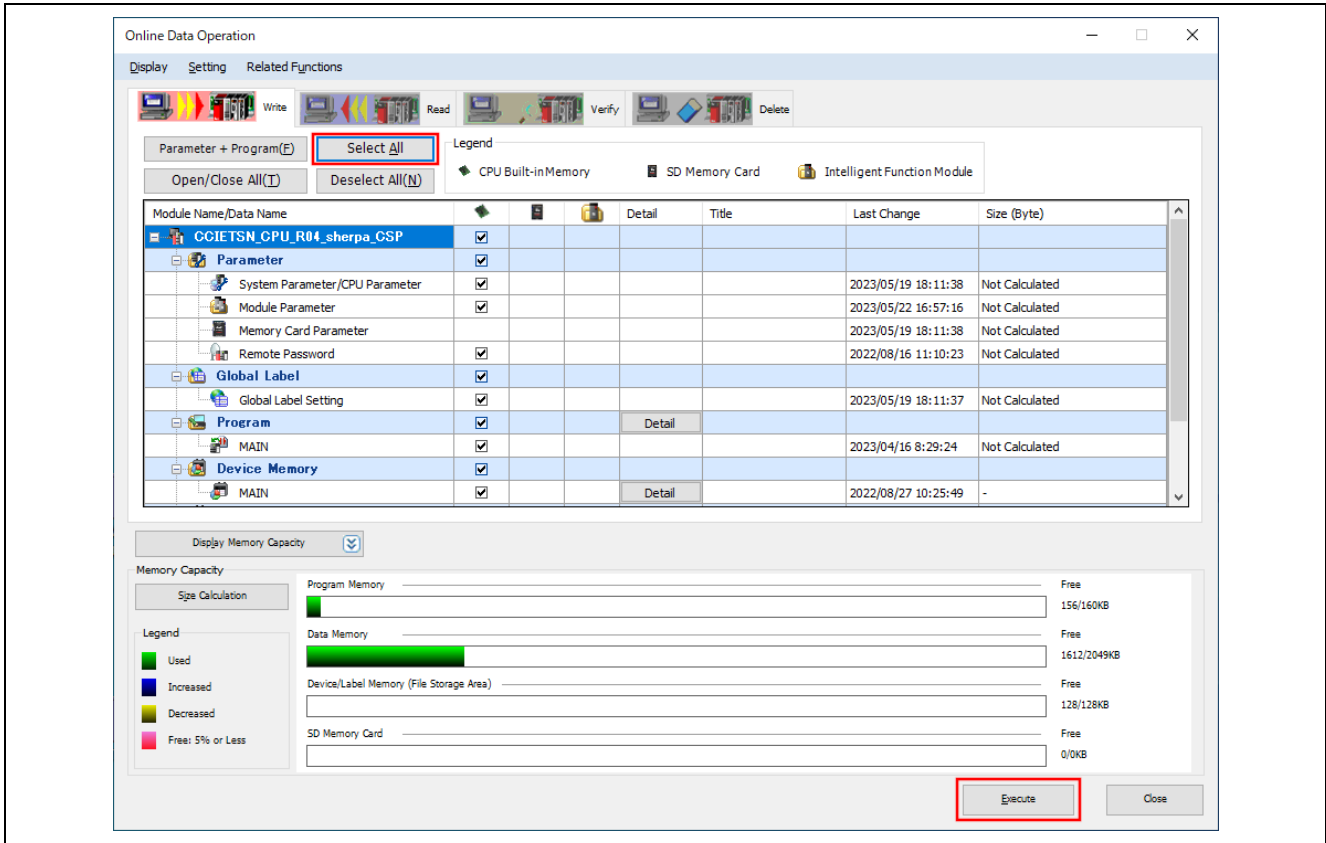


Figure 6.6 GX Works3 download procedure <Online data operation display>

### 6.1.2.5 Connection confirmation

Hold the RUN/STOP/RESET switch on the sequencer CPU unit to the RESET side for about 1 second to reset the sequencer. After that, push it to the RUN side and execute the written program.

i. Check data link

To establish the data link, confirm that the D.LINK LED is lit on the network module of the sequencer. It is also possible to check the details of the connection status using the diagnosis function of GX Works3. Select the menu [Diagnosis] → [CC-Link IE TSN/CC-Link IE Field diagnosis], and check the status of each device on the CC-Link IE TSN/CC-Link IE Field diagnosis screen.

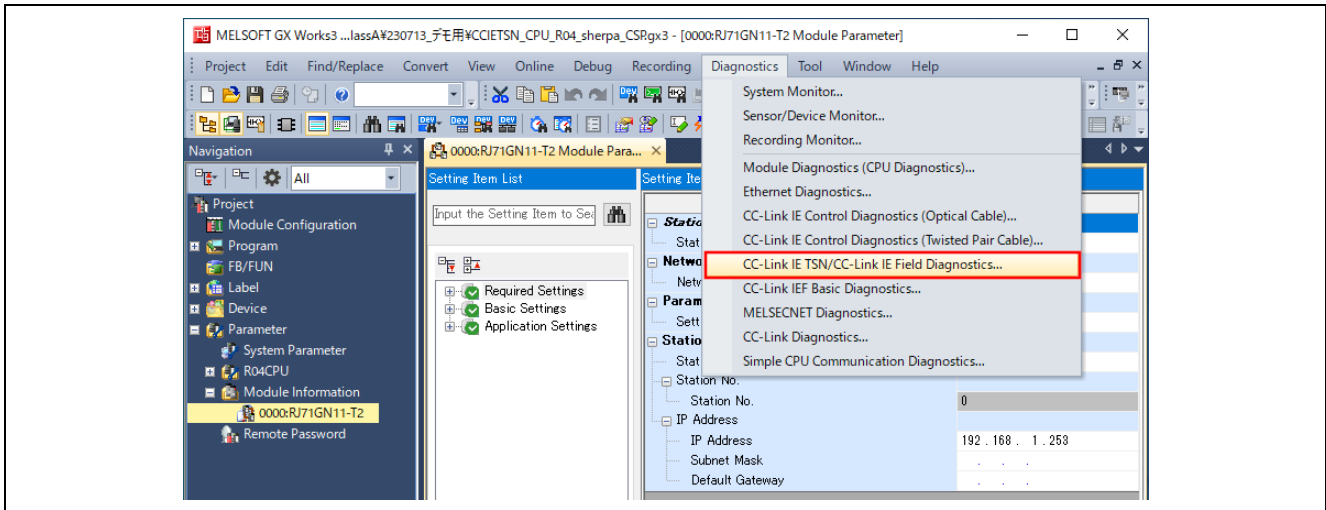


Figure 6.7 GX Works3 connection check procedure <Main display>

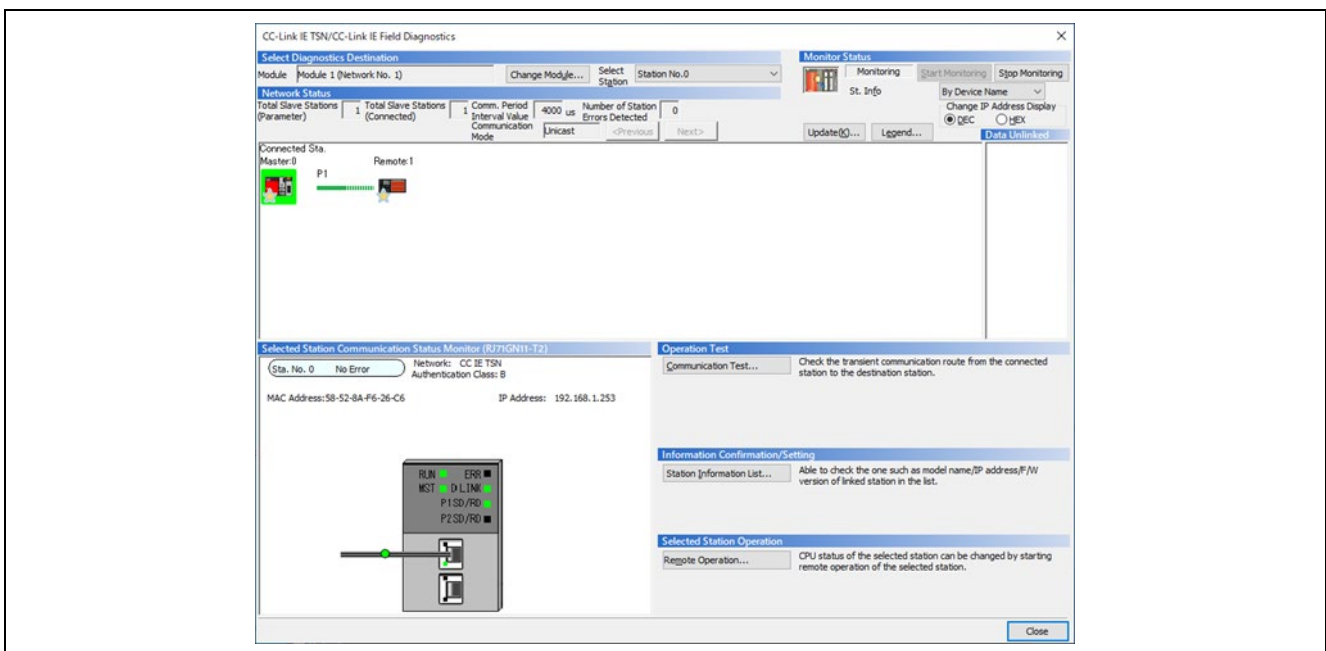


Figure 6.8 GX Works3 connection check procedure <CC-Link IE TSN/CC-Link IE Field diagnosis display>

[Note] For how to read the diagnosis, refer to the following manual.

MELSEC iQ-R CC-Link IE TSN User's Manual (Application) (SH-082128)

## ii. Cyclic transmission reception confirmation

Reception of cyclic transmission can be confirmed with the LED.

GX Works3 sample project file increments the cyclic transmission RY output data at regular intervals.

RX72M sample program indicates the lower bits of the received RY data with general-purpose LEDs (LED6, LED7).



**Figure 6.9** Cyclic transmission reception confirmation LED

## Revision History

Rev.	Date	Description	
		Page	Summary
1.00	Aug. 31, 2023	—	First edition issued

All other logos and trademarks are the property of the respective trademark owners

## General Precautions in the Handling of Microprocessing Unit and Microcontroller Unit Products

The following usage notes are applicable to all Microprocessing unit and Microcontroller unit products from Renesas. For detailed usage notes on the products covered by this document, refer to the relevant sections of the document as well as any technical updates that have been issued for the products.

### 1. Precaution against Electrostatic Discharge (ESD)

A strong electrical field, when exposed to a CMOS device, can cause destruction of the gate oxide and ultimately degrade the device operation. Steps must be taken to stop the generation of static electricity as much as possible, and quickly dissipate it when it occurs. Environmental control must be adequate. When it is dry, a humidifier should be used. This is recommended to avoid using insulators that can easily build up static electricity. Semiconductor devices must be stored and transported in an anti-static container, static shielding bag or conductive material. All test and measurement tools including work benches and floors must be grounded. The operator must also be grounded using a wrist strap. Semiconductor devices must not be touched with bare hands. Similar precautions must be taken for printed circuit boards with mounted semiconductor devices.

### 2. Processing at power-on

The state of the product is undefined at the time when power is supplied. The states of internal circuits in the LSI are indeterminate and the states of register settings and pins are undefined at the time when power is supplied. In a finished product where the reset signal is applied to the external reset pin, the states of pins are not guaranteed from the time when power is supplied until the reset process is completed. In a similar way, the states of pins in a product that is reset by an on-chip power-on reset function are not guaranteed from the time when power is supplied until the power reaches the level at which resetting is specified.

### 3. Input of signal during power-off state

Do not input signals or an I/O pull-up power supply while the device is powered off. The current injection that results from input of such a signal or I/O pull-up power supply may cause malfunction and the abnormal current that passes in the device at this time may cause degradation of internal elements. Follow the guideline for input signal during power-off state as described in your product documentation.

### 4. Handling of unused pins

Handle unused pins in accordance with the directions given under handling of unused pins in the manual. The input pins of CMOS products are generally in the high-impedance state. In operation with an unused pin in the open-circuit state, extra electromagnetic noise is induced in the vicinity of the LSI, an associated shoot-through current flows internally, and malfunctions occur due to the false recognition of the pin state as an input signal become possible.

### 5. Clock signals

After applying a reset, only release the reset line after the operating clock signal becomes stable. When switching the clock signal during program execution, wait until the target clock signal is stabilized. When the clock signal is generated with an external resonator or from an external oscillator during a reset, ensure that the reset line is only released after full stabilization of the clock signal. Additionally, when switching to a clock signal produced with an external resonator or by an external oscillator while program execution is in progress, wait until the target clock signal is stable.

### 6. Voltage application waveform at input pin

Waveform distortion due to input noise or a reflected wave may cause malfunction. If the input of the CMOS device stays in the area between  $V_{IL}$  (Max.) and  $V_{IH}$  (Min.) due to noise, for example, the device may malfunction. Take care to prevent chattering noise from entering the device when the input level is fixed, and also in the transition period when the input level passes through the area between  $V_{IL}$  (Max.) and  $V_{IH}$  (Min.).

### 7. Prohibition of access to reserved addresses

Access to reserved addresses is prohibited. The reserved addresses are provided for possible future expansion of functions. Do not access these addresses as the correct operation of the LSI is not guaranteed.

### 8. Differences between products

Before changing from one product to another, for example to a product with a different part number, confirm that the change will not lead to problems. The characteristics of a microprocessing unit or microcontroller unit products in the same group but having a different part number might differ in terms of internal memory capacity, layout pattern, and other factors, which can affect the ranges of electrical characteristics, such as characteristic values, operating margins, immunity to noise, and amount of radiated noise. When changing to a product with a different part number, implement a system-evaluation test for the given product.

- Arm<sup>®</sup> and Cortex<sup>®</sup> are registered trademarks of Arm Limited (or its subsidiaries) in the EU and/or elsewhere. All rights reserved.
- Ethernet is a registered trademark of Fuji Xerox Co., Ltd.
- IEEE is a registered trademark of the Institute of Electrical and Electronics Engineers Inc
- TRON is an acronym for "The Real-time Operation system Nucleus."
- ITRON is an acronym for "Industrial TRON."
- $\mu$  ITRON is an acronym for "Micro Industrial TRON."
- TRON, ITRON, and  $\mu$  ITRON do not refer to any specific product or products.
- OPC and OPC UA are registered trademark and patented technology, licensed by OPC Foundation.
- Additionally all product names and service names in this document are a trademark or a registered trademark which belongs to the respective owners. a trademark or a registered trademark which belongs to the respective owners.

## Notice

1. Descriptions of circuits, software and other related information in this document are provided only to illustrate the operation of semiconductor products and application examples. You are fully responsible for the incorporation or any other use of the circuits, software, and information in the design of your product or system. Renesas Electronics disclaims any and all liability for any losses and damages incurred by you or third parties arising from the use of these circuits, software, or information.
  2. Renesas Electronics hereby expressly disclaims any warranties against and liability for infringement or any other claims involving patents, copyrights, or other intellectual property rights of third parties, by or arising from the use of Renesas Electronics products or technical information described in this document, including but not limited to, the product data, drawings, charts, programs, algorithms, and application examples.
  3. No license, express, implied or otherwise, is granted hereby under any patents, copyrights or other intellectual property rights of Renesas Electronics or others.
  4. You shall not alter, modify, copy, or reverse engineer any Renesas Electronics product, whether in whole or in part. Renesas Electronics disclaims any and all liability for any losses or damages incurred by you or third parties arising from such alteration, modification, copying or reverse engineering.
  5. Renesas Electronics products are classified according to the following two quality grades: "Standard" and "High Quality". The intended applications for each Renesas Electronics product depends on the product's quality grade, as indicated below.
    - "Standard": Computers; office equipment; communications equipment; test and measurement equipment; audio and visual equipment; home electronic appliances; machine tools; personal electronic equipment; industrial robots; etc.
    - "High Quality": Transportation equipment (automobiles, trains, ships, etc.); traffic control (traffic lights); large-scale communication equipment; key financial terminal systems; safety control equipment; etc.
- Unless expressly designated as a high reliability product or a product for harsh environments in a Renesas Electronics data sheet or other Renesas Electronics document, Renesas Electronics products are not intended or authorized for use in products or systems that may pose a direct threat to human life or bodily injury (artificial life support devices or systems; surgical implantations; etc.), or may cause serious property damage (space system; undersea repeaters; nuclear power control systems; aircraft control systems; key plant systems; military equipment; etc.). Renesas Electronics disclaims any and all liability for any damages or losses incurred by you or any third parties arising from the use of any Renesas Electronics product that is inconsistent with any Renesas Electronics data sheet, user's manual or other Renesas Electronics document.
6. When using Renesas Electronics products, refer to the latest product information (data sheets, user's manuals, application notes, "General Notes for Handling and Using Semiconductor Devices" in the reliability handbook, etc.), and ensure that usage conditions are within the ranges specified by Renesas Electronics with respect to maximum ratings, operating power supply voltage range, heat dissipation characteristics, installation, etc. Renesas Electronics disclaims any and all liability for any malfunctions, failure or accident arising out of the use of Renesas Electronics products outside of such specified ranges.
  7. Although Renesas Electronics endeavors to improve the quality and reliability of Renesas Electronics products, semiconductor products have specific characteristics, such as the occurrence of failure at a certain rate and malfunctions under certain use conditions. Unless designated as a high reliability product or a product for harsh environments in a Renesas Electronics data sheet or other Renesas Electronics document, Renesas Electronics products are not subject to radiation resistance design. You are responsible for implementing safety measures to guard against the possibility of bodily injury, injury or damage caused by fire, and/or danger to the public in the event of a failure or malfunction of Renesas Electronics products, such as safety design for hardware and software, including but not limited to redundancy, fire control and malfunction prevention, appropriate treatment for aging degradation or any other appropriate measures. Because the evaluation of microcomputer software alone is very difficult and impractical, you are responsible for evaluating the safety of the final products or systems manufactured by you.
  8. Please contact a Renesas Electronics sales office for details as to environmental matters such as the environmental compatibility of each Renesas Electronics product. You are responsible for carefully and sufficiently investigating applicable laws and regulations that regulate the inclusion or use of controlled substances, including without limitation, the EU RoHS Directive, and using Renesas Electronics products in compliance with all these applicable laws and regulations. Renesas Electronics disclaims any and all liability for damages or losses occurring as a result of your noncompliance with applicable laws and regulations.
  9. Renesas Electronics products and technologies shall not be used for or incorporated into any products or systems whose manufacture, use, or sale is prohibited under any applicable domestic or foreign laws or regulations. You shall comply with any applicable export control laws and regulations promulgated and administered by the governments of any countries asserting jurisdiction over the parties or transactions.
  10. It is the responsibility of the buyer or distributor of Renesas Electronics products, or any other party who distributes, disposes of, or otherwise sells or transfers the product to a third party, to notify such third party in advance of the contents and conditions set forth in this document.
  11. This document shall not be reprinted, reproduced or duplicated in any form, in whole or in part, without prior written consent of Renesas Electronics.
  12. Please contact a Renesas Electronics sales office if you have any questions regarding the information contained in this document or Renesas Electronics products.

(Note1) "Renesas Electronics" as used in this document means Renesas Electronics Corporation and also includes its directly or indirectly controlled subsidiaries.

(Note2) "Renesas Electronics product(s)" means any product developed or manufactured by or for Renesas Electronics.

(Rev.4.0-1 November 2017)

## Corporate Headquarters

TOYOSU FORESIA, 3-2-24 Toyosu,  
Koto-ku, Tokyo 135-0061, Japan  
[www.renesas.com](http://www.renesas.com)

## Trademarks

Renesas and the Renesas logo are trademarks of Renesas Electronics Corporation. All trademarks and registered trademarks are the property of their respective owners.

## Contact information

For further information on a product, technology, the most up-to-date version of a document, or your nearest sales office, please visit:  
[www.renesas.com/contact/](http://www.renesas.com/contact/)