

# RX development environment migration guide

Migration From RX Family and Other Family to RX Family

(IDE ed.)

(High-performance Embedded Workshop to CS+)

November 30, 2016

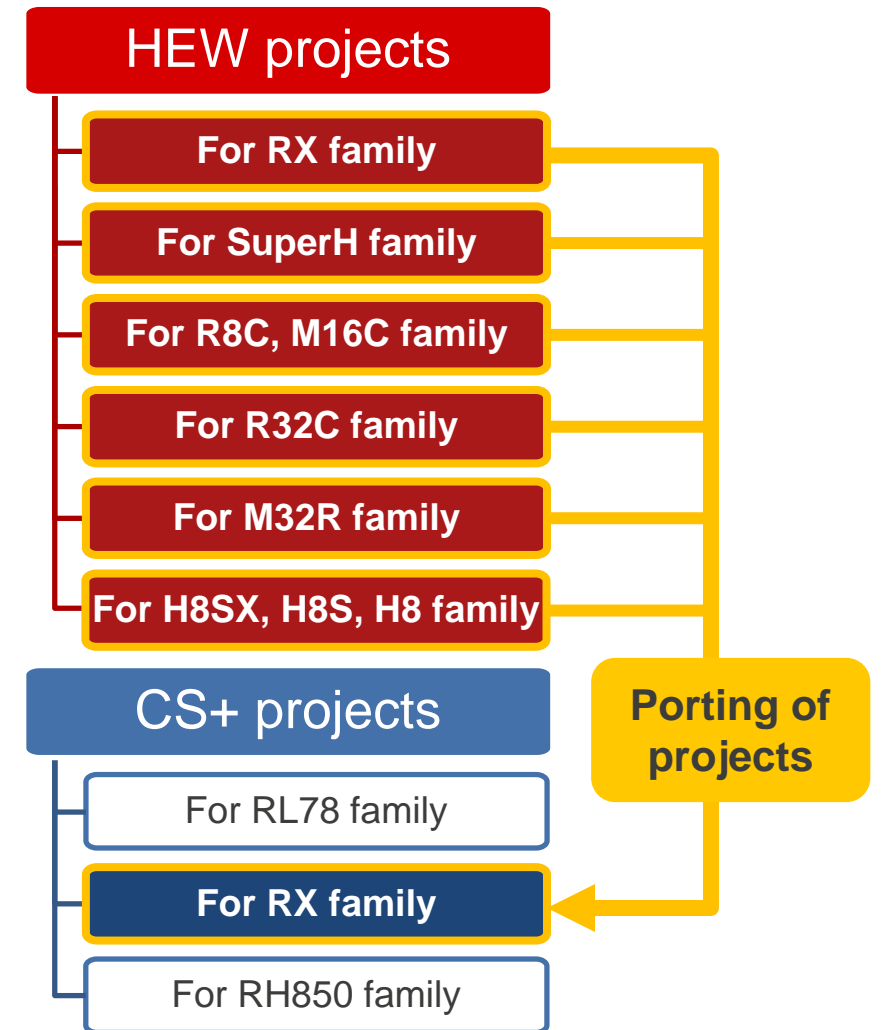
R20UT2055EJ0102


Software Product Marketing Department,  
Software Business Division  
Renesas System Design Co., Ltd.

# Preface

---

- This document describes the porting a project from High-performance Embedded Workshop (hereinafter HEW) IDE to CS+ IDE for an RX family compiler (hereinafter CC-RX).
- The applicable versions of CS+ / HEW / CC-RX are as follows.
  - CS+ for CC V4.01.00
  - HEW V.4.09.01.007
  - CC-RX V2.05.00



 Described in this document

# Agenda

---

- Utilizing Existing Projects **Page 4**
- Differences from HEW when Creating a Project **Page 5**
- Migration to CS+ for RX from HEW for Non-RX **Page 18**

# Utilizing Existing Projects

Workspaces\* created by the HEW can be loaded for use in the CS+ environment.



Opened in the CS+ environment taking over the following settings:

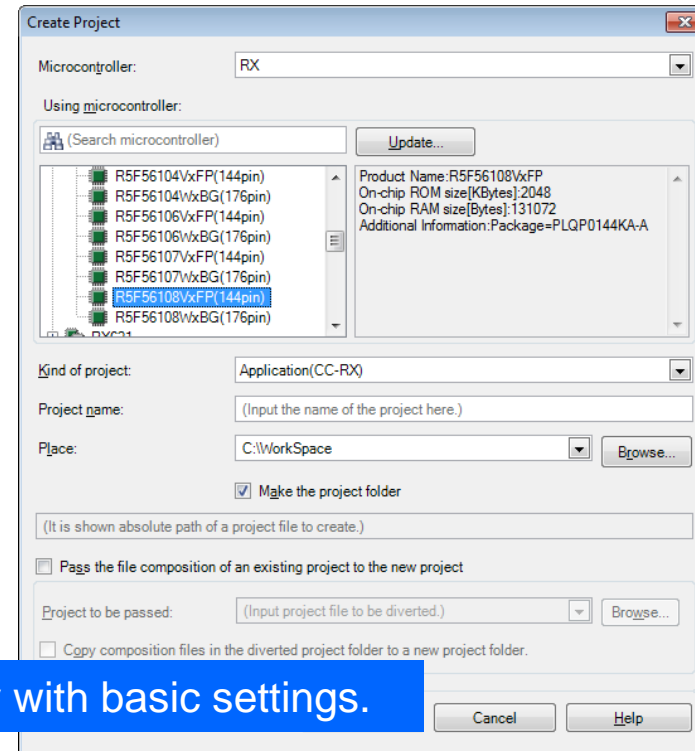
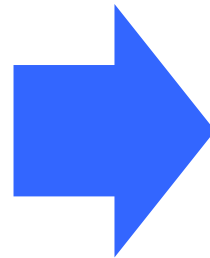
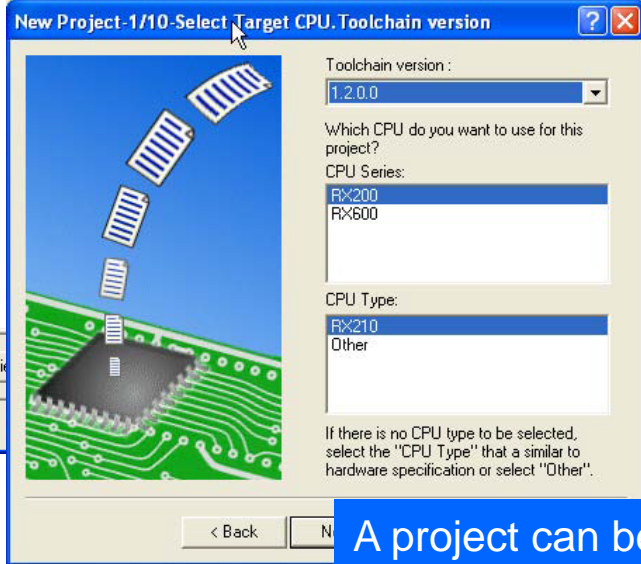
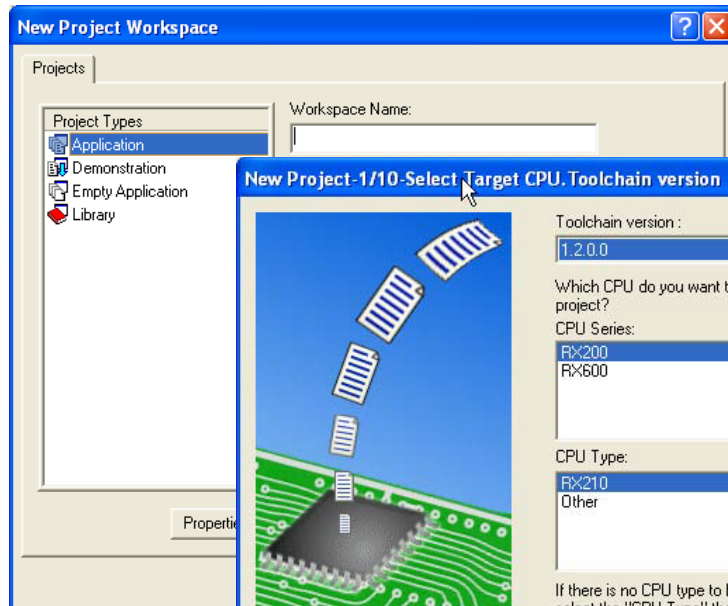
- Files
- Project configuration
- Build options (only from HEW for RX)

\* Workspaces for RX created by HEW v.4.07 or later

Migration from HEW to CS+ is supported.

# Differences from HEW when Creating a Project(1/8)

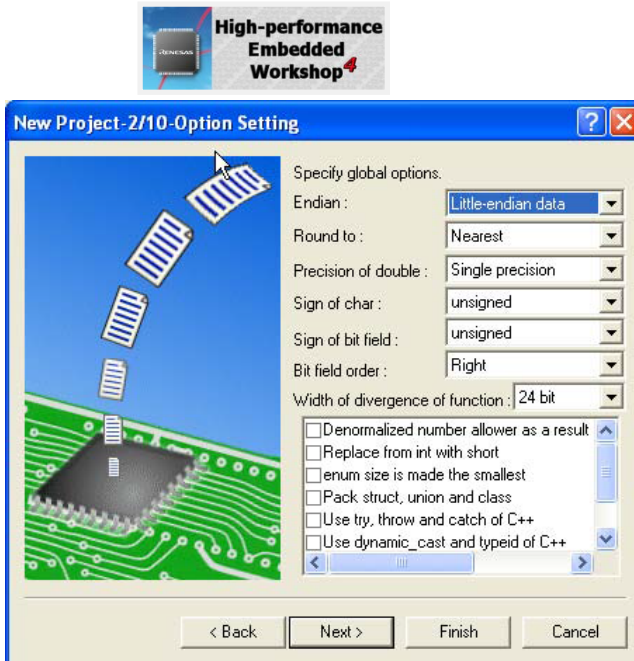
- The setup wizard for creating a project is different.



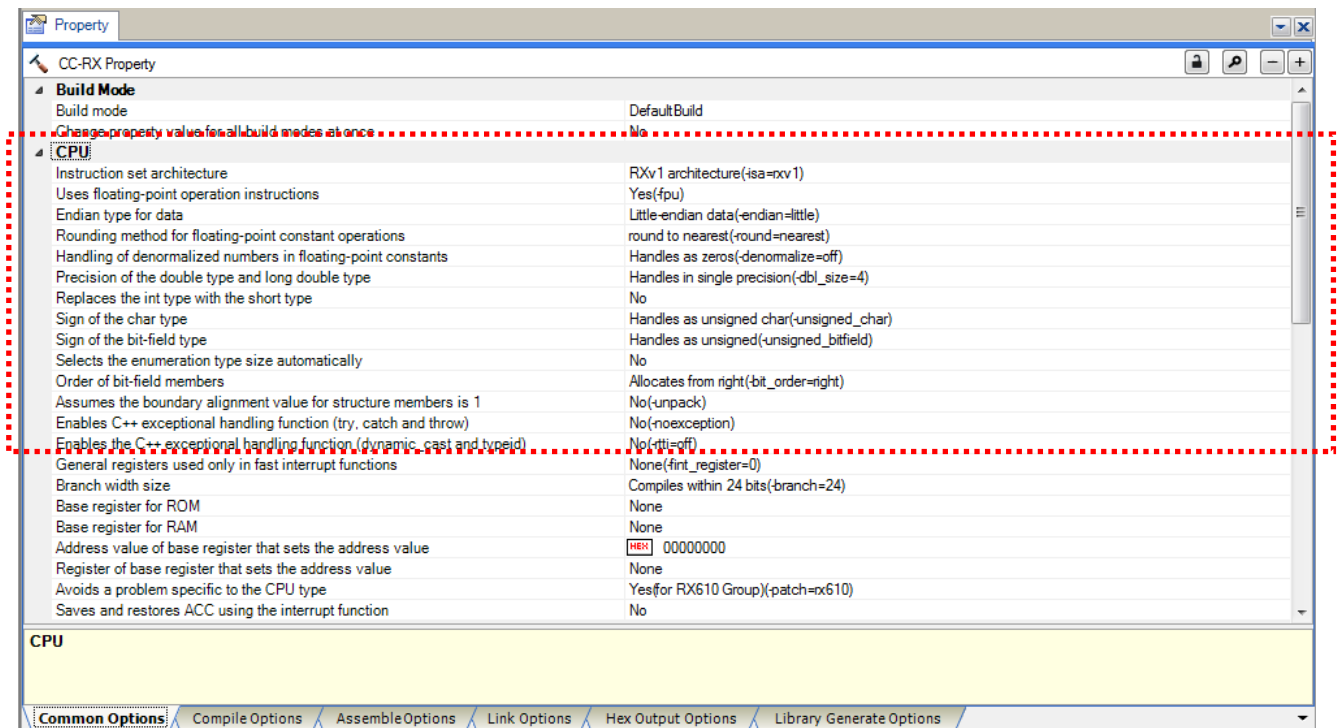
A project can be created only with basic settings.

# Differences from HEW when Creating a Project(2/8)

- Settings made in the process of creating a project in the HEW can be made in the window shown below after a project has been created.

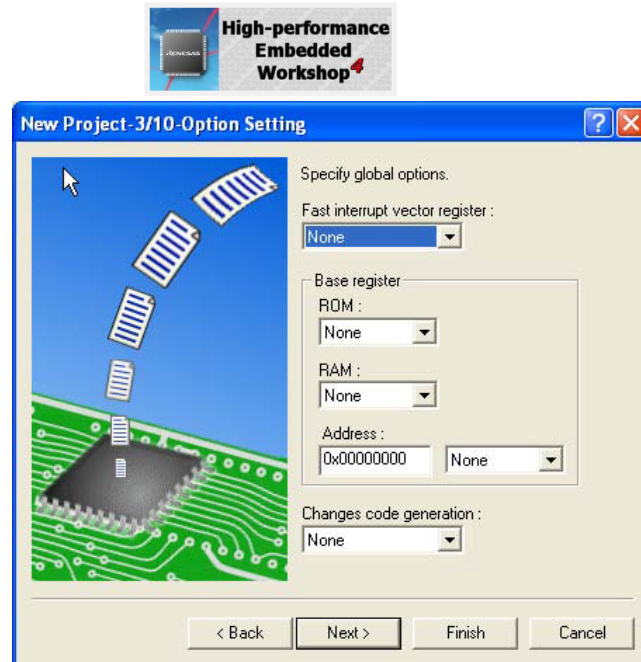


Make settings in the [Common Options] page of CC-RX (build tool) properties after a project has been created.

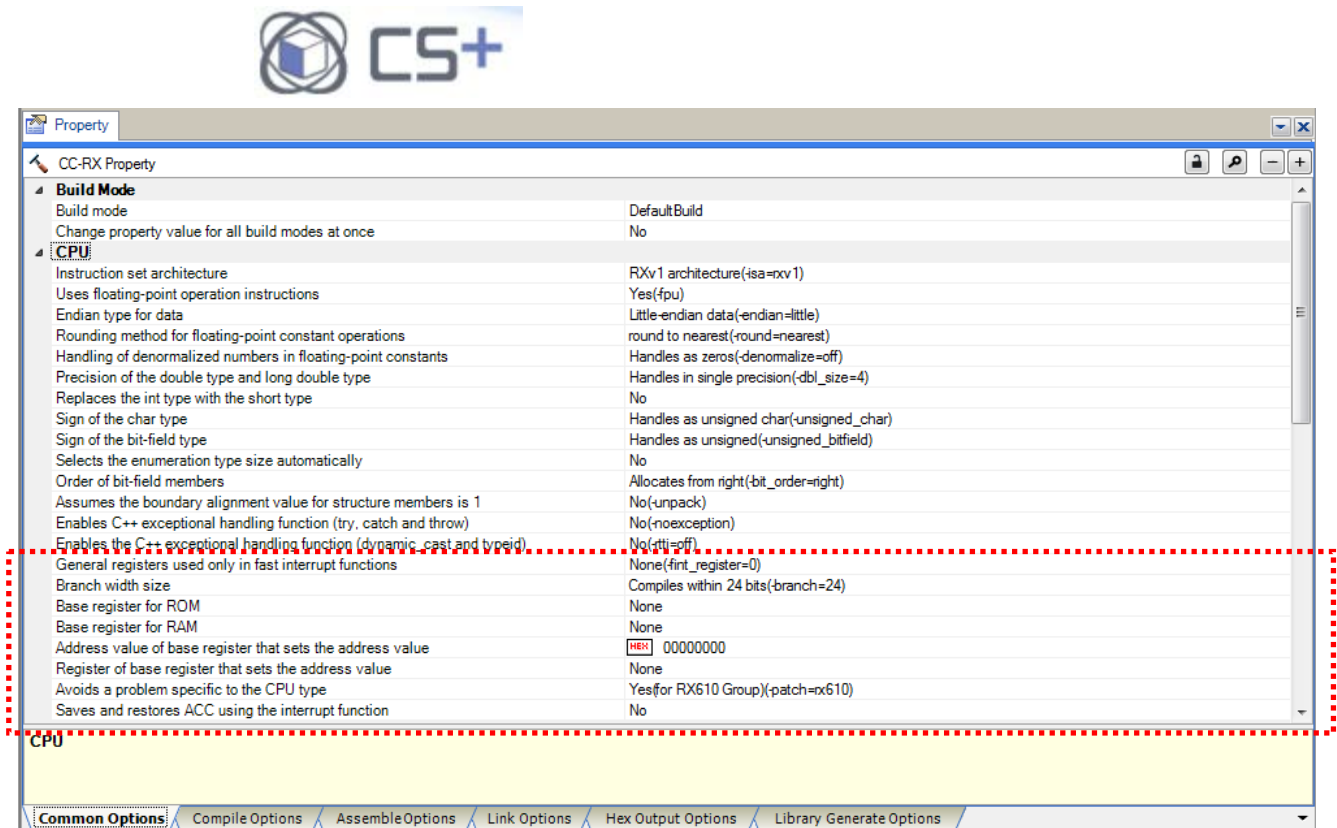


# Differences from HEW when Creating a Project(3/8)

- Settings made in the process of creating a project in the HEW can be made in the window shown below after a project has been created.

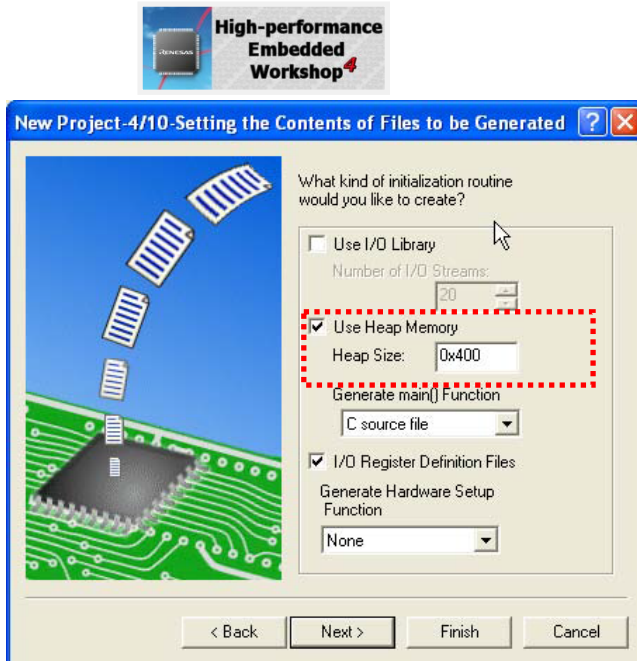


Make settings in the [Common Options] page of CC-RX (build tool) properties after a project has been created.

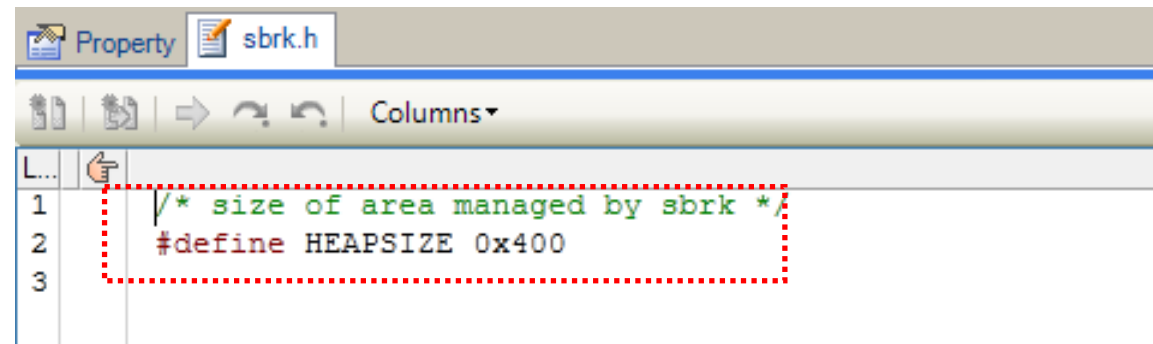


# Differences from HEW when Creating a Project(4/8)

- Settings made in the process of creating a project in the HEW can be made in the window shown below after a project has been created.



In the HEW, the set value is applied to the generated startup code.

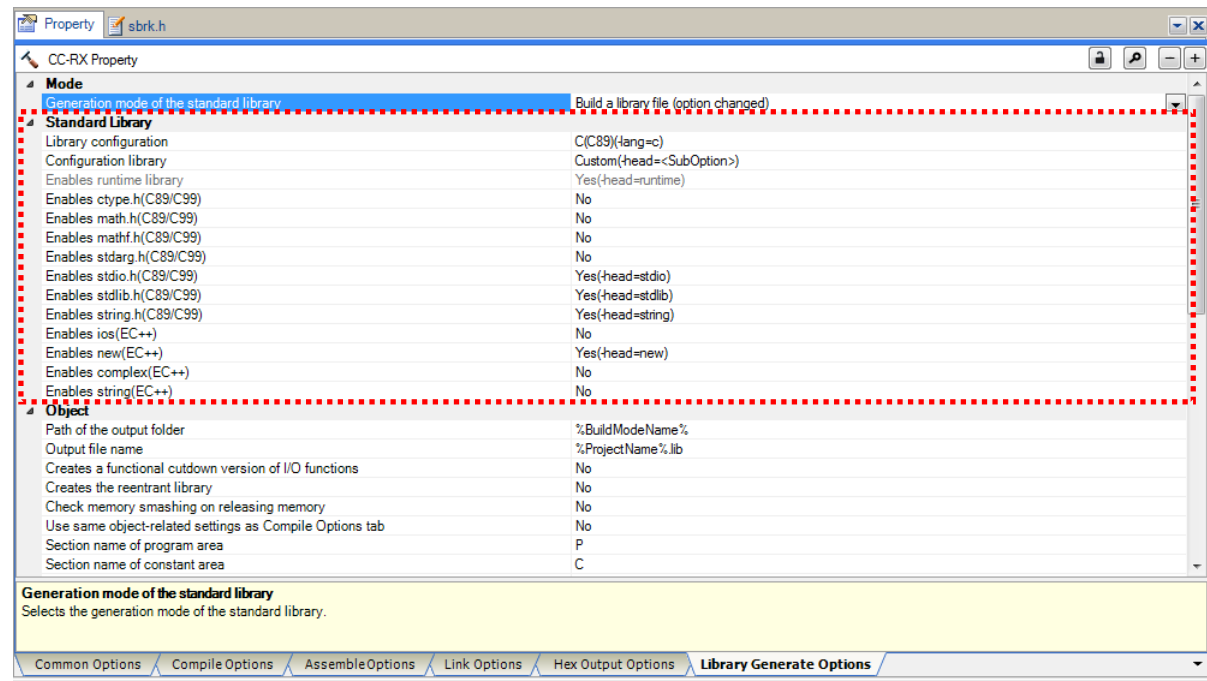


Setting can be updated by changing the value.



# Differences from HEW when Creating a Project(5/8)

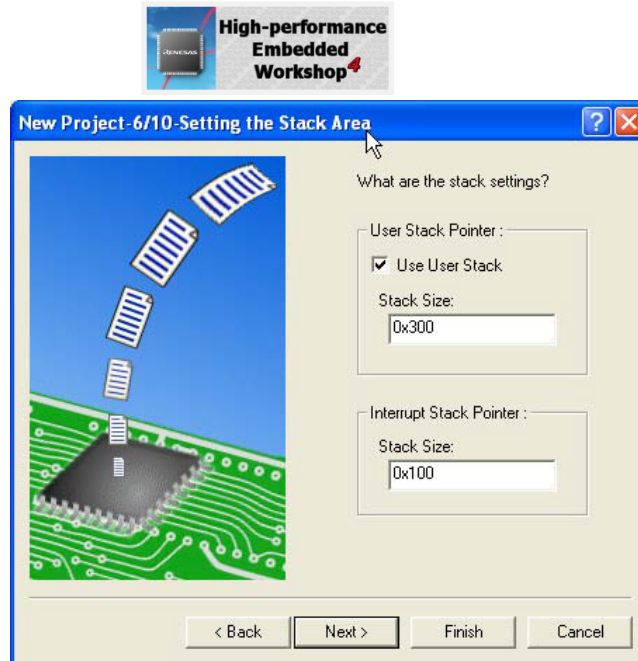
- Settings made in the process of creating a project in the HEW can be made in the window shown below after a project has been created.



Make settings in the [Library Generate Options] page of CC-RX (build tool) properties after a project has been created.

# Differences from HEW when Creating a Project(6/8)

- Settings made in the process of creating a project in the HEW can be made in the window shown below after a project has been created.



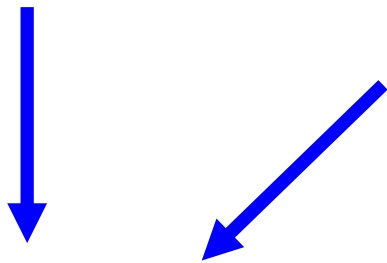
Described on the next page

# Differences from HEW when Creating a Project(7/8)

- RX's stack areas are automatically allocated according to the description in the stacksct.h file and the stack section layout set on the [Link Options] page of CC-RX (build tool) properties.

```
<stacksct.h>
#pragma stacksize su=0x100
#pragma stacksize si=0x300
```

Stack sizes written in the stacksct.h file



```
...
MVTC #00000508,USP
MVTC #00000808,ISP
...
```

Automatically generated by executing build

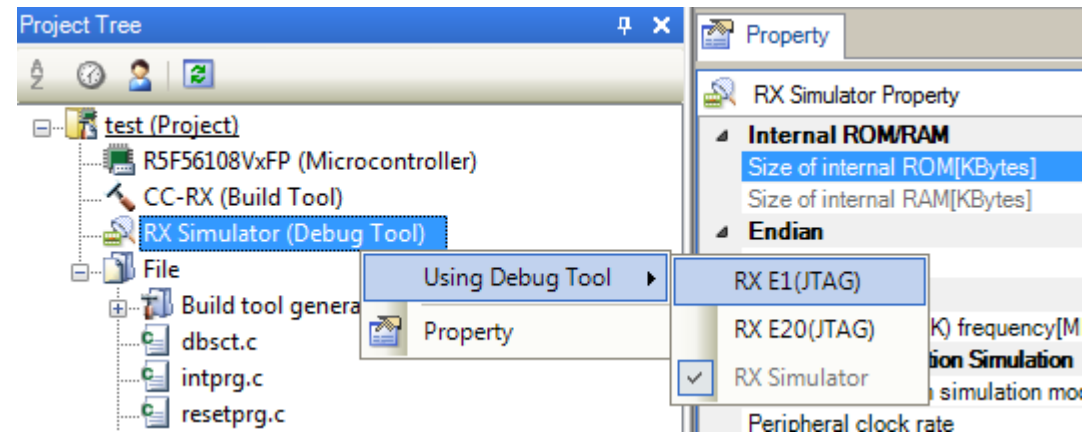
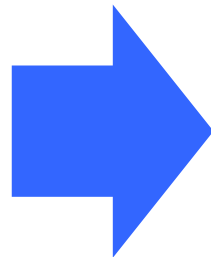
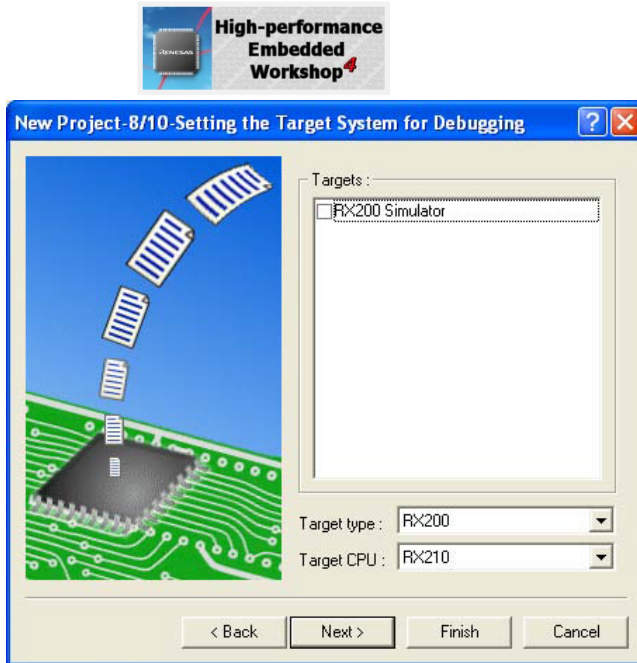
Stack section layout setting

Address	Section
0x00000004	B_1
	R_1
	B_2
	R_2
	B
	R
	SU
	SI
0xFFE00000	PResetPRG
0xFFE00100	C_1
	C_2

Generates a code in which the address figured out from “addresses at which SU and SI sections are allocated” + “sizes specified in the stacksct.h file” is specified as the initial value of the stack pointer.

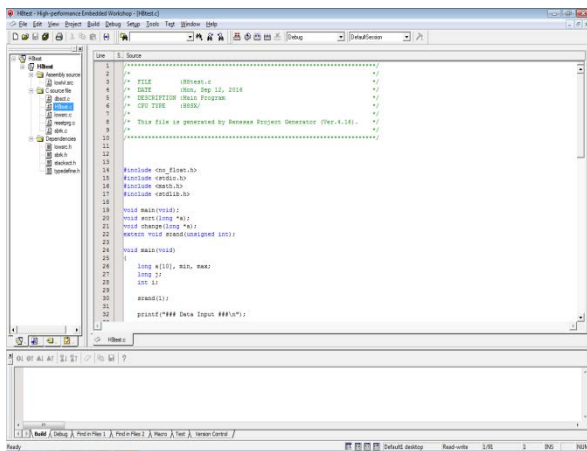
# Differences from HEW when Creating a Project(8/8)

- Settings made in the process of creating a project in the HEW can be made in the window shown below after a project has been created.

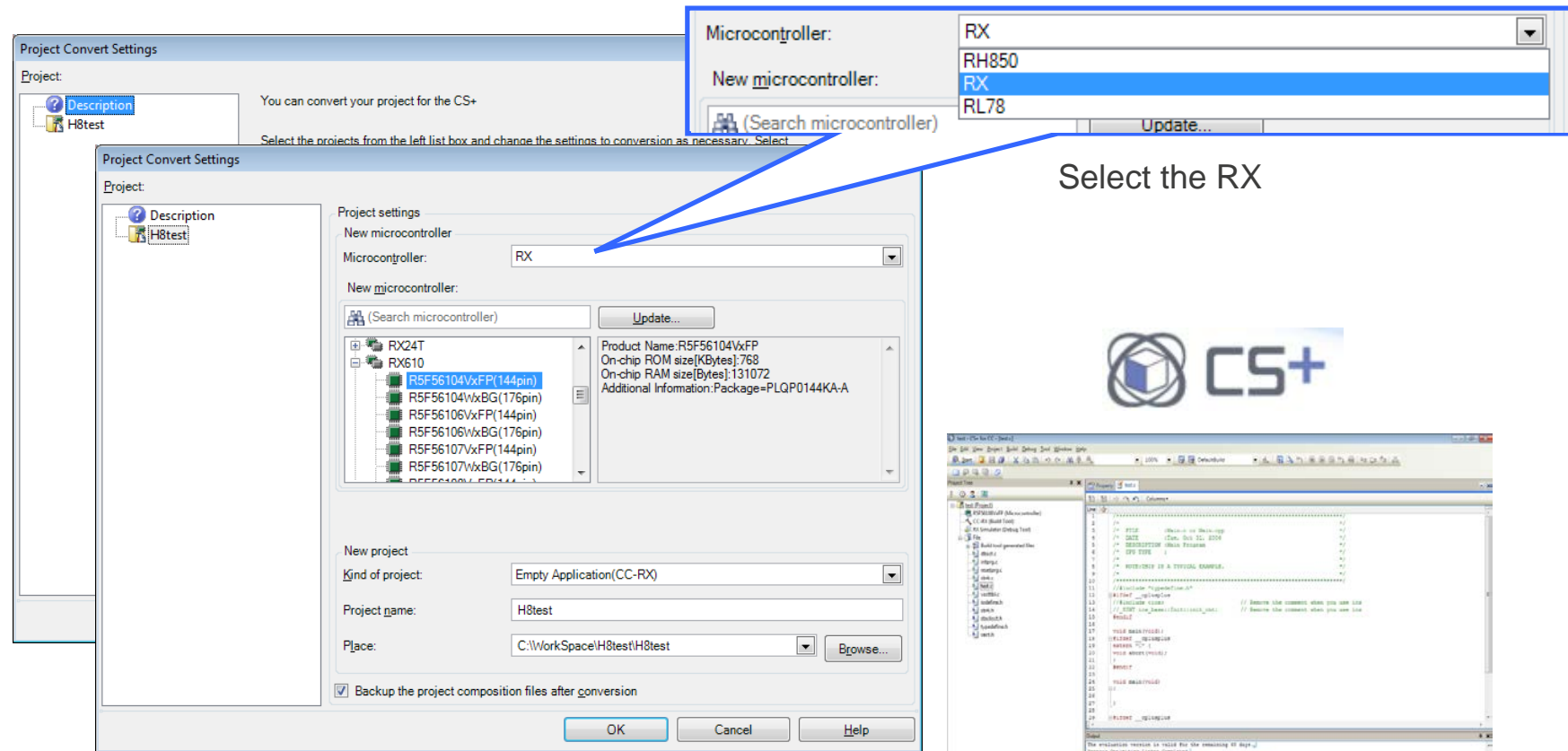


In the CS+ environment, created projects can be **easily** connected to the debugger environment.

# Migration to CS+ for RX from HEW for Non-RX

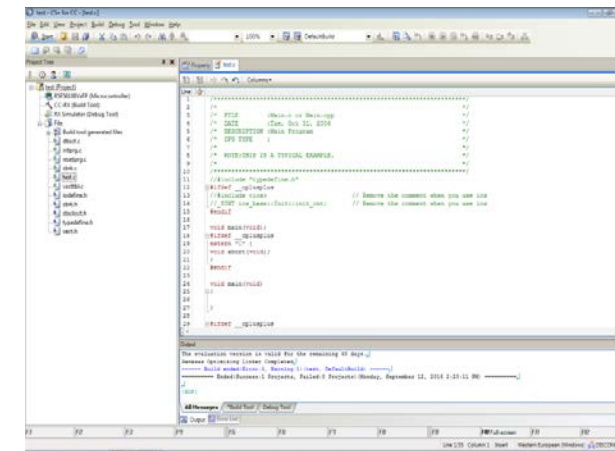


HEW project for Non-RX



Select the RX

CS+ supports device conversion.



CS+ project for RX

---

Renesas System Design Co., Ltd.