



ISL9241 Software Installation Guide

Chetna Tailor

Rev 1.0 CT071118

Table of Contents

Introduction 4

1 Getting Started..... 4

 1.1 Required Hardware 4

 1.2 Required software 4

 1.3 Installing GUI 4

 1.4 Installing USB Driver 5

2 Using the GUI 6

 2.1 Setting USB connection..... 6

 2.2 Getting Started 6

Table of Figures

Figure 1: ISL9241 Installation Wizard	4
Figure 2: ISL9241 Control Software Installer	5
Figure 3: ISL9241 Browse to USB driver location.....	5
Figure 4: ISL9241 Successful Driver Installation	6
Figure 5: ISL9241 Graphical User Interface	7

Introduction

The ISL9241 Control Software communicates with ISL9241 controller via USB to on board SMBus interface. The Graphical User Interface (GUI) facilitates access to ISL9241 SMBus Registers.

1 Getting Started

This section describes how to install, start and use the GUI software.

1.1 Required Hardware

ISL9241 Evaluation Board

USB 2.0 A/B cable

1.2 Required software

The software Installation Wizard package includes all three required components, ISL9241 SMBus Control Tool, National Instruments Runtime VISA Engine and USB interface module driver.

1.3 Installing GUI

Both the ISL9241 Control Software and the National Instruments Runtime Engine are installed automatically from the installation wizard.

Note: It is recommended to close all other applications before this installation and to reboot the computer when the installation is completed.

- Extract the Zipfile to local drive and not the network drive. The network's security prohibits the .inf file to be copied on the network.
- Run AutoRun.Exe". The following Menu will show up.

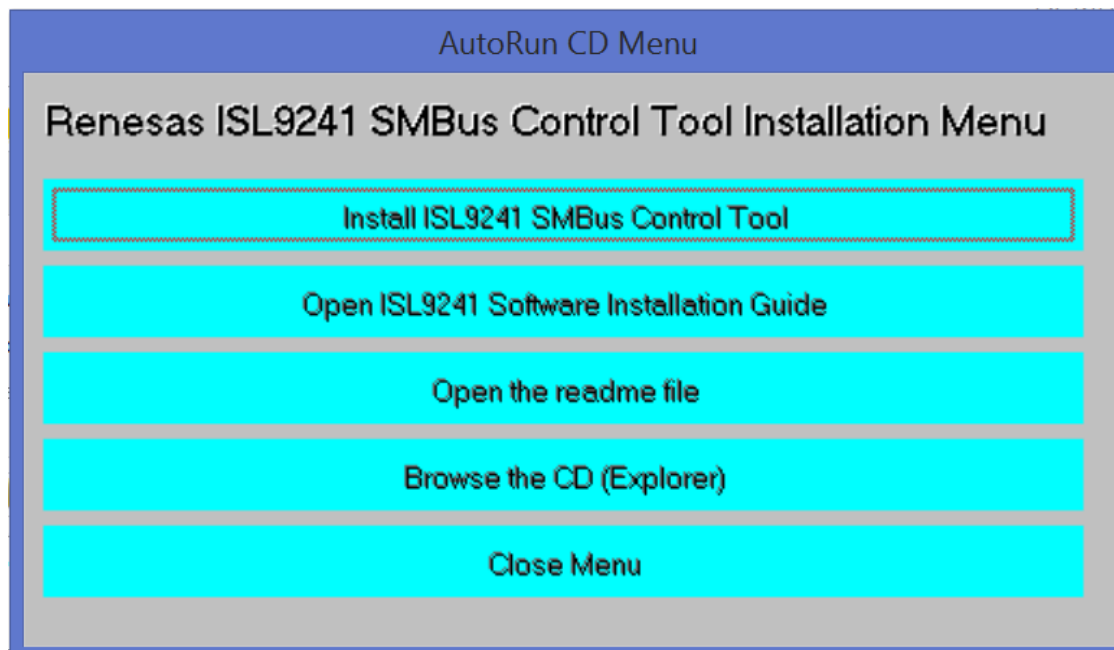


Figure 1: ISL9241 Installation Wizard

- Press "Install ISL9241 SMBus Control Tool" and the following menu will appear. Press "Next".

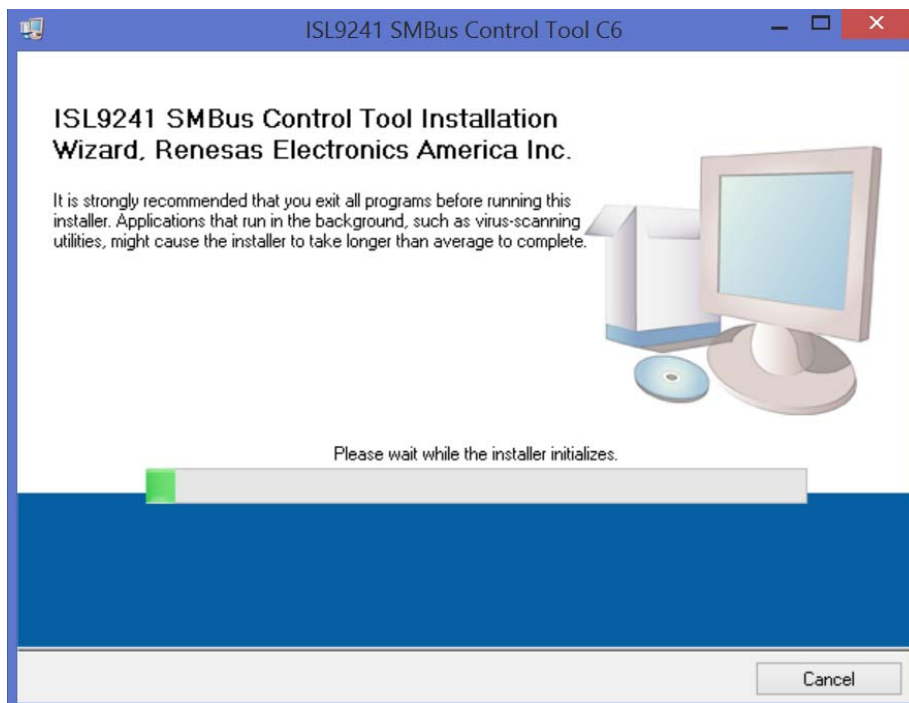


Figure 2: ISL9241 Control Software Installer

- Follow the instruction to accept two End User License Agreements to complete the software installation.
- Press “Close Menu” from installation wizard.

1.4 Installing USB Driver

This process explains how to install the driver for SMBus to USB interface.

The driver supports Vista, Window 7, Window 8 and Window 8.1 operating system.

If you have installed the driver or certificate previously, skip this section.

1. From the installation wizard package, go to “USB-I2C Driver”. Right click on “SMBus-USB-Win10.inf” file and choose “install”. *Note: The driver installation will fail if installation is done from the network drive due to network security.*

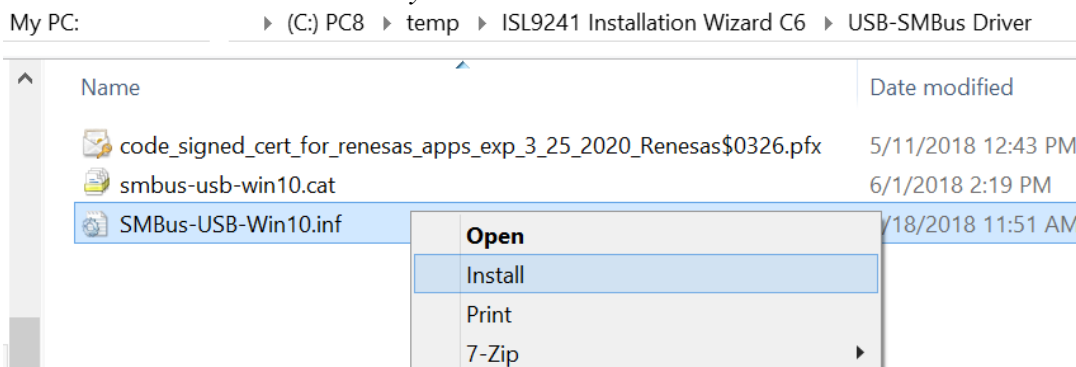


Figure 3: ISL9241 Browse to USB driver location

2. The driver if successfully installed will come up with the following.

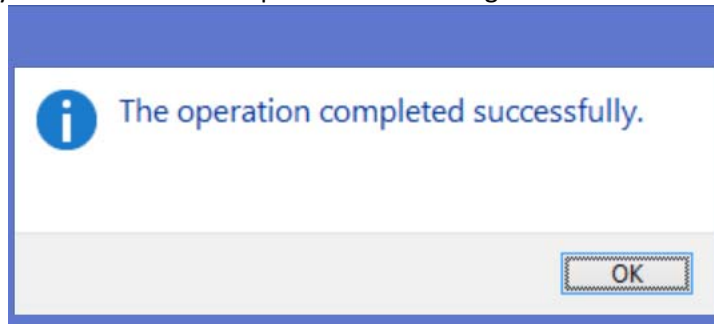


Figure 4: ISL9241 Successful Driver Installation

3. In the event, if the installation fails Digital Signature due in Window 10 operating system or security settings, please use the following steps to bypass it.

NOTE: Please print the steps below as during the process the system will restart and the following instruction is needed to complete the process

Go to Start - Then Command Prompt
Enter command "shutdown /r /o /f /t 00"
Click the "OK" button
System will restart to a "Choose an option" screen
Then select "Troubleshoot" from "Choose an option" screen
Then select "Advanced options" from "Troubleshoot" screen
Then select "Windows Startup Settings" from "Advanced options" screen
Click "Restart" button
System will restart to "Advanced Boot Options" screen
Select "Disable Driver Signature Enforcement"
Restart & install drivers...

2 Using the GUI

To use the evaluation system, the ISL9241 SMBus Tool Software must be first installed. Do not connect the Evaluation board to the USB port until installation is completed.

The ISL9241 evaluation board must be set up before using the Graphical User Interface (GUI) of the software. Refer to *ISL9241 Demo Board User Manual* for setup procedures.

2.1 Setting USB connection

Connect the USB cable from computer's USB port to ISL9241 Eval board.

2.2 Getting Started

To start the GUI, select Microsoft Start  -> All Programs -> Renesas-> ISL9241 SMBus Control Tool

The following GUI will appear as shown in the Figure 5.

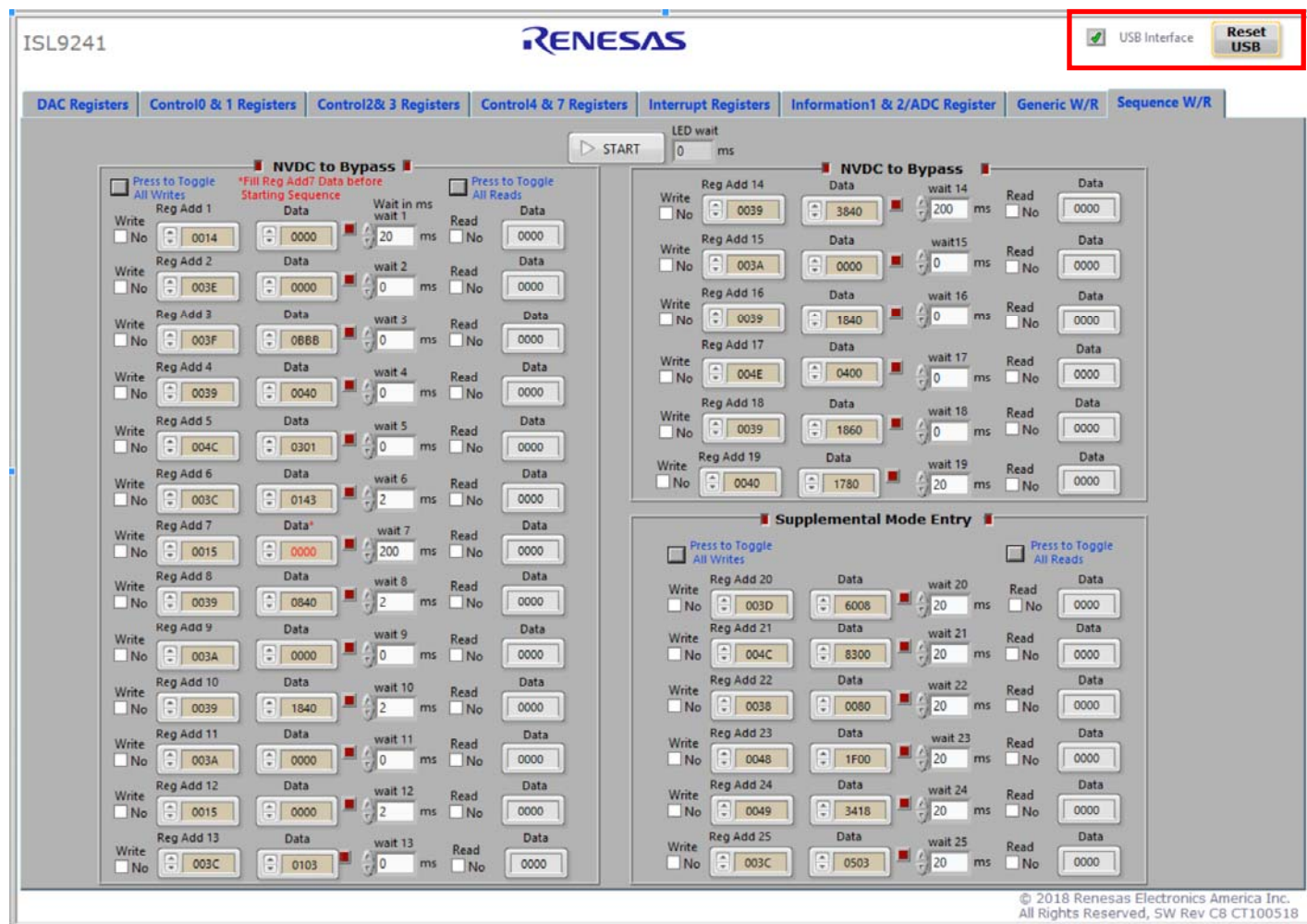


Figure 5: ISL9241 Graphical User Interface

Check the status of the USB interface at the top of the GUI. If the USB communication is OK, the *USB Interface Status* will show green check mark, as shown in Fig. 4.

If the status shows red crossing mark, it indicates that the computer can't establish the connection. Please follow these steps to troubleshoot:

- ✓ Please make sure the driver file for the USB interface is installed correctly. The driver files are on the "USB-I2C Driver" folder.
- ✓ Check the USB Cable connections from the evaluation board to the USB port of the computer.
- ✓ Try different sequences: plug in the evaluation board first or start the GUI first.

If the problem continues, it may indicate that the USB drivers are not properly installed; therefore, the evaluation board is not recognized. Please refer back to Sec 1.4 Installing USB Drivers for this device.