

8A3xxxx 48QFN

Evaluation Kit

**Description**

The 8Axxxx 48QFN EVK allows customers to evaluate Renesas' ClockMatrix (CM) devices (for example, 8A34043, 48QFN). This document discusses the following:

- The board's design, its power supply, and jumper settings
- The input and output connectors for normal operation
- How to bring up the board using the Timing Commander™ software GUI
- How to configure and program the board to generate standard-compliant frequencies

**Kit Contents**

- 8A34xxx 48QFN Evaluation Board
- USB Type A cable

**PC Requirements**

- Renesas [Timing Commander™ Software](#) installed
- [ClockMatrix GUI](#)
- USB 2.0 or USB 3.0 interface
- Windows XP SP3 or later
- Processor: Minimum 1GHz
- Memory: Minimum 512MB; recommended 1GB
- Available disk space: Minimum 600MB (1.5GB 64-bit); recommended 1GB (2GB 64-bit)
- Network access during installation if the .NET framework is not currently installed on the system

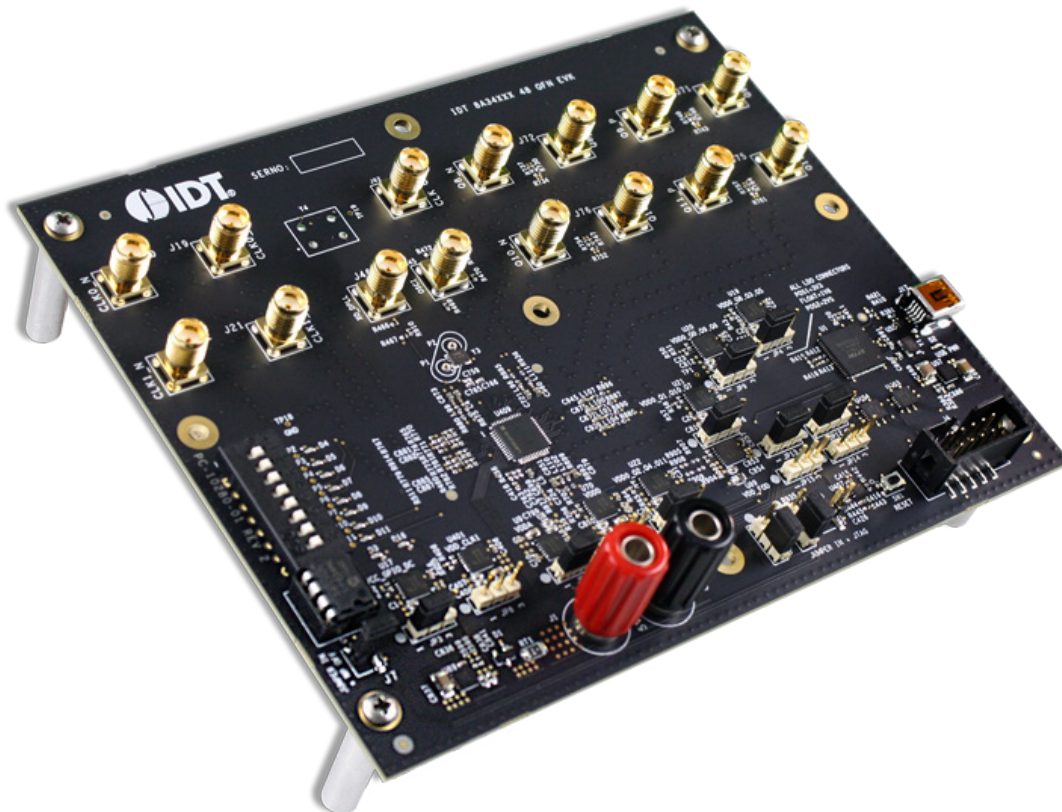


Figure 1. 8A3xxxx 48QFN Evaluation Board

## Contents

<b>1. Board Design</b> .....	<b>3</b>
1.1 Board Power Supply .....	4
1.2 Voltage Selection Jumpers.....	4
1.3 GPIO Switches, LEDs, and Test Points.....	5
1.4 USB Jack.....	5
1.5 Onboard EEPROM .....	5
1.6 I <sup>2</sup> C /SPI Auxiliary Path Specifications .....	6
<b>2. Working with Timing Commander for Programing and Configuration</b> .....	<b>6</b>
2.1 Default Operation.....	6
2.2 Using Timing Commander to Control the Board.....	8
2.3 Output Terminations and Rework to Receive a 1PPS Input .....	12
<b>3. How to Upgrade the Firmware</b> .....	<b>13</b>
3.1 Upload Firmware to the RAM .....	13
3.2 Upload Firmware into the EEPROM .....	15
3.3 Verify the EEPROM Programming .....	16
<b>4. Schematic Diagrams</b> .....	<b>17</b>
<b>5. Ordering Information</b> .....	<b>17</b>
<b>6. Revision History</b> .....	<b>17</b>

## Figures

Figure 1. 8A3xxxx 48QFN Evaluation Board.....	1
Figure 2. 8A3xxxx 48QFN Evaluation Board – Detailed .....	3
Figure 3. Example of Voltage Jumpers .....	4
Figure 4. GPIO Setting and Status Display Area.....	5
Figure 5. Board Setting for Default Operation .....	7
Figure 6. Starting Up Timing Commander GUI.....	8
Figure 7. Selecting 8A34001 Using Personality File v4.6 .....	9
Figure 8. Timing Commander GUI with a Settings File Opened.....	9
Figure 9. Setting I <sup>2</sup> C for Connecting the Board with GUI .....	10
Figure 10. Green Band Appears when a Valid Connection is Made.....	10
Figure 11. Firmware Version Mismatch Warning Message.....	11
Figure 12. Reading Firmware Version .....	11
Figure 13. Read Firmware Version of ClockMatrix Chip .....	11
Figure 14. AC Coupling and Terminations for Input Clock .....	12
Figure 15. Configuring CLK0 as CMOS to Receive a 1PPS Input.....	12

# 1. Board Design

The following diagram identifies various components of the board: input and output SMA connectors, power supply jacks, and some jumper settings necessary for the board operations.

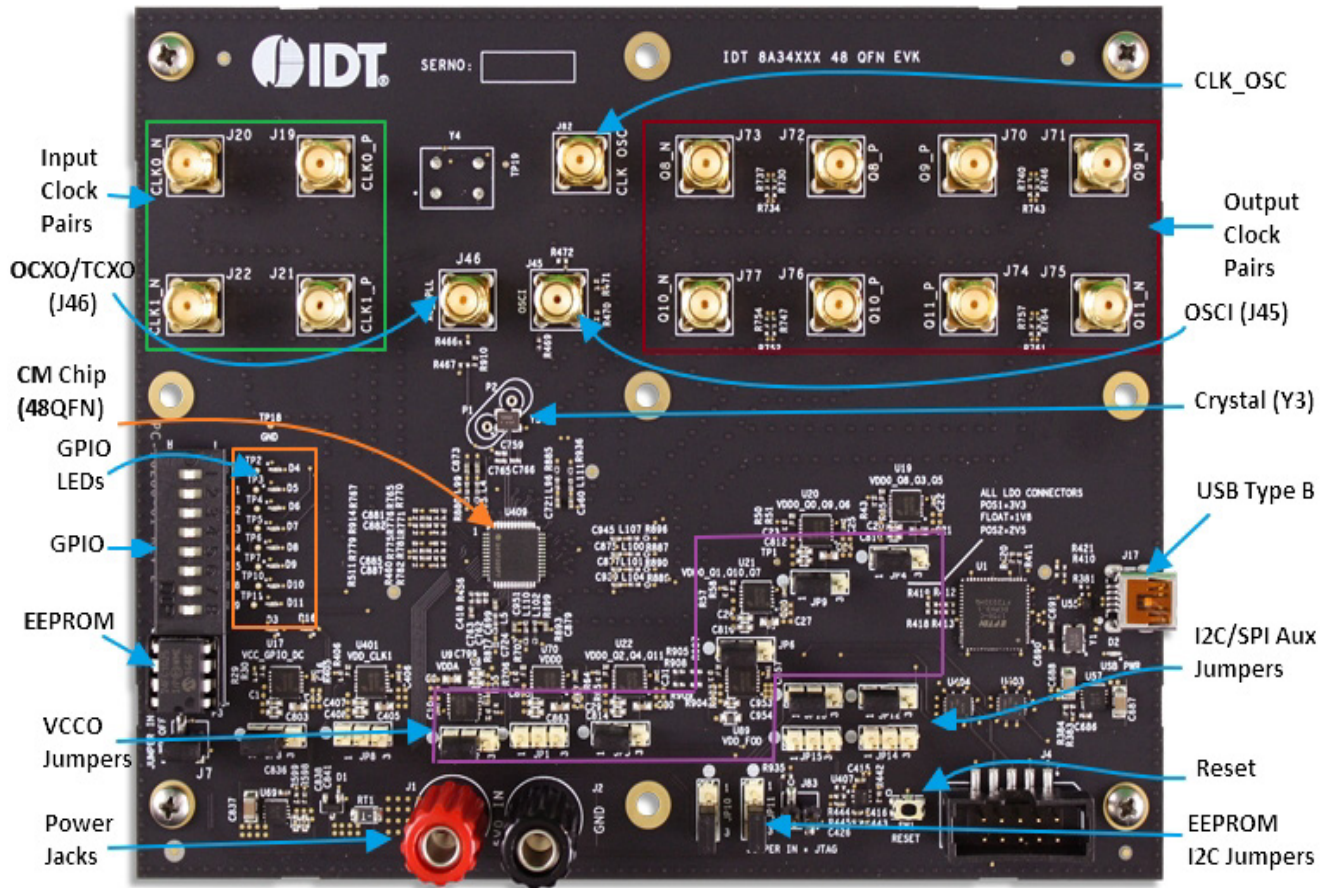


Figure 2. 8A3xxxx 48QFN Evaluation Board – Detailed

- **Input SMA connectors** – There are two differential inputs labeled CLK0/nCLK0–CLK1/nCLK1. Each input clock can be configured differentially (LVDS, PECL 2.5V, and PECL 3.3V) or in single-ended format (CMOS).
- **Output SMA connectors** – There are four outputs labeled as Q8/nQ8–Q11/nQ11. Each output clock can be configured differentially (LVDS, LVPECL, or user-defined amplitude), or in single-ended format (LVCMOS – in-phase or out-of-phase).
- **GPIO switch, LEDs, and test points** – There are eight GPIOs available. Each GPIO can be set a “low” or “high” level (if input) or displayed with an LED (if output). Some GPIOs are used to set the chip in a certain working condition on power-up. For more information, see GPIO Switches, LEDs, and Test Points.
- **USB connector** – A USB mini-connector connects the evaluation board to a PC for GUI communications. No power is drawn from the USB connector other than to power the FTDI USB chip.
- **VCCO voltage selection jumpers** – Each output voltage can be individually supplied with 1.8V, 2.5V, or 3.3V. These jumpers are used to select the voltage for the output voltages.
- **Reset button** – A small button is used to reset the board.
- **OSCI Input connector** – An SMA connector, J45, can optionally supply a clock signal to overdrive the crystal.
- **OCXO/TCXO reference** – An SMA connector, J46, can supply a local OCXO/TCXO reference as an optional reference for System DPLL.
- **Crystal** – A crystal of various frequencies must be present for board operations. A 3225 footprint is provided for SMT crystals. For easy plug-in of a canned crystal, two through holes are also available.
- **EEPROM** – An SO-8 socket is provided to hold an EEPROM device of compatible package. EEPROM is used to store firmware and customer configuration data, if needed.



## 1.1 Board Power Supply

The board uses a single +5V supply for its power supplies. When running the board, set the bench power supply at 5V/2A. The red jack (J1) is positive; the black jack (J2) is the ground.

Multiple LDOs are used to generate 3.3V, 2.5V, and 1.8V from the +5V supply.

## 1.2 Voltage Selection Jumpers

There are nine headers/jumpers to select different voltages for different functional blocks of the chip. Each head is labeled pin 1 and pin 3 – jumping pin 1 and pin 2 will select 3.3V; jumping pin 2 and pin 3 will select 2.5V; no jumper will have 1.8V.

See the following example for JP4 and JP9 – JP4 will select 2.5V; JP9 will select 3.3V.

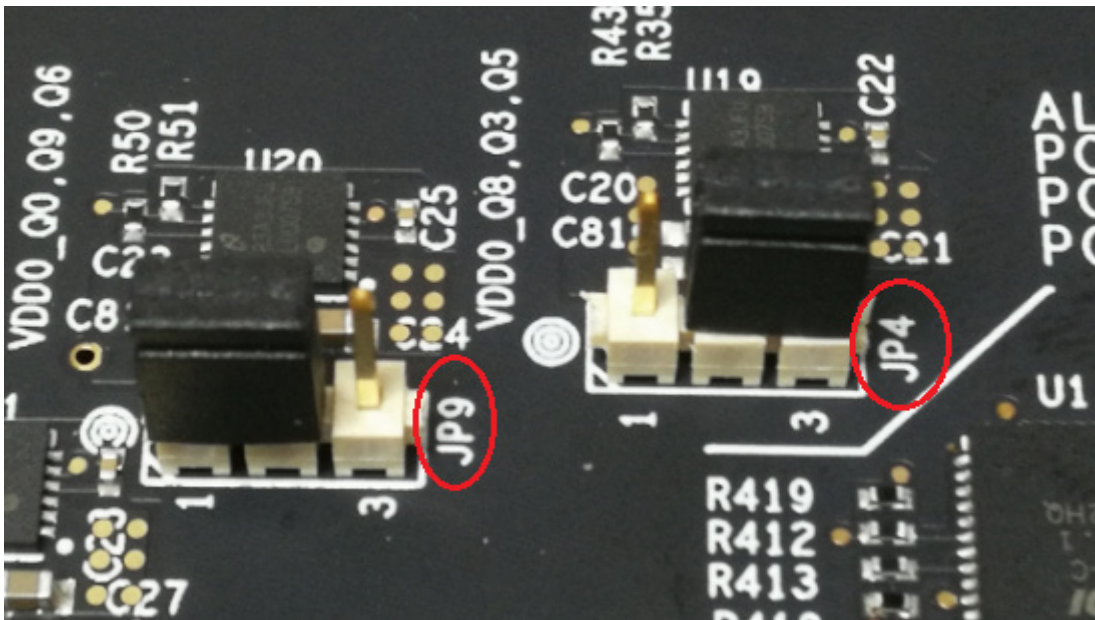


Figure 3. Example of Voltage Jumpers

The following list shows which head/jumper is used to select what voltage:

- JP1 – VDDD
- JP2 – VDPA
- JP3 – VCC\_GPIO\_DC
- JP4 – VDDO\_Q8\_3\_5
- JP5 – VDDO\_Q2\_4\_11
- JP6 – VDDO\_1\_10\_7
- JP7 – VDD\_CLK0
- JP8 – VDD\_CLK1
- JP9 – VDDO\_Q0\_9\_6

### 1.3 GPIO Switches, LEDs, and Test Points

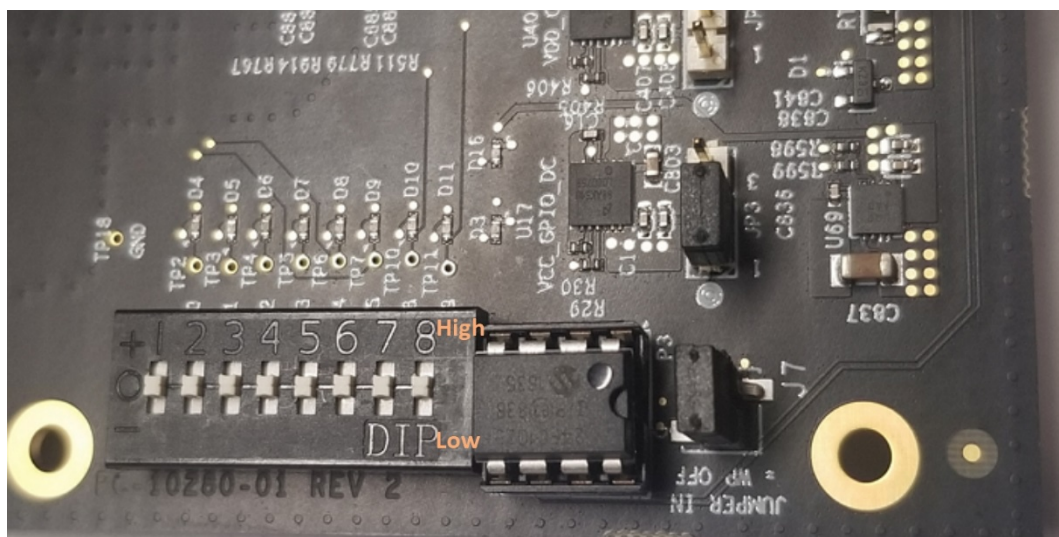
An 8-bit dip switch sets the logic levels for eight GPIOs. The following table shows the GPIO levels for each setting and the corresponding LED state.

**Table 1. GPIO Settings**

Dip Switch Position	GPIO Logic Level	LED
Left	Low	On
Center	High if GPIO is configured as Input High or Low according to the GPIO output setting	High if GPIO is configured as Input High or Low according to the GPIO output setting
Right	High	Off

See the picture and labels in [Figure 4](#).

When the GPIOs are configured as outputs (such as User-Controlled or LOL indicator), the dip switch for the corresponding GPIO should be placed in the center position. The LED will indicate the state of the GPIO.



**Figure 4. GPIO Setting and Status Display Area**

### 1.4 USB Jack

The board has a USB mini-connector. The other end of the USB cable is a USB Type A connector going to a PC.

### 1.5 Onboard EEPROM

An onboard EEPROM is used to store device firmware and/or customer’s configuration data. There are two headers/jumpers, JP10 and JP11, used to select the I<sup>2</sup>C communication paths for the EEPROM.

**Table 2. EEPROM I<sup>2</sup>C Connections**

	JP10/JP11	JP10/JP11
Jumper Position	Both Pin 1 and 2	Both Pin 2 and 3
EEPROM I <sup>2</sup> C Path	FDTI and EEPROM	EEPROM and CM Chip

## 1.6 I<sup>2</sup>C /SPI Auxiliary Path Specifications

I<sup>2</sup>C and SPI connections can be configured using onboard jumpers. There are four headers/jumpers that control the auxiliary serial stream signals.

Table 3. I<sup>2</sup>C/SPI Path Connections

	JP12/JP13	JP12/JP13	JP14/JP15	JP14/JP15
Jumper Position	Pin 1 and 2	Pin 2 and 3	Pin 1 and 2	Pin 2 and 3
CM Chip Serial Port Path	SCLK/SDA Connected to on-board FTDI I <sup>2</sup> C Chip (Default)	SCLK/SDA Connected to J4 for external I <sup>2</sup> C/SPI controller use	NONE	SDI/nCS Connected to J4 for external I <sup>2</sup> C/SPI controller use

## 2. Working with Timing Commander for Programming and Configuration

The following sections are best cross-referenced with the [ClockMatrix GUI Step-by-Step User Guide](#) that is available on the [ClockMatrix Timing Solutions](#) page and various ClockMatrix device product pages.

### 2.1 Default Operation

The board can operate off an EEPROM that has stored all information including firmware and a default configuration data. A default operation provides a sanity check on the board before running the board through the Timing Commander. Set the board in the following default conditions (see [Figure 5](#) for jumper and switch positions).

- Set all the GPIOs to the center position. This will ensure that GPIO8 and GPIO9 are high and that the serial port is configured for I<sup>2</sup>C 1 byte addressing.
- VDDA = 3.3V, VCC\_GPIO\_DC = 3.3V, and VDDO\_Qx = 3.3V
- Crystal frequency = 50MHz
- CLK0 = 25MHz
- EEPROM is connected to ClockMatrix chip through an I<sup>2</sup>C bus by jumping Pin 2 and 3 of JP10 and JP11

With the above default conditions ready, connect the board to the PC using a USB type A to USB mini cable and power up the board using a single +5V supply. On power-up, the ClockMatrix chip reads its firmware and configuration data from EEPROM and updates all registers. When this process is completed, the following frequencies are available:

- Q0 = 122.88MHz
- Q1 = 122.88MHz

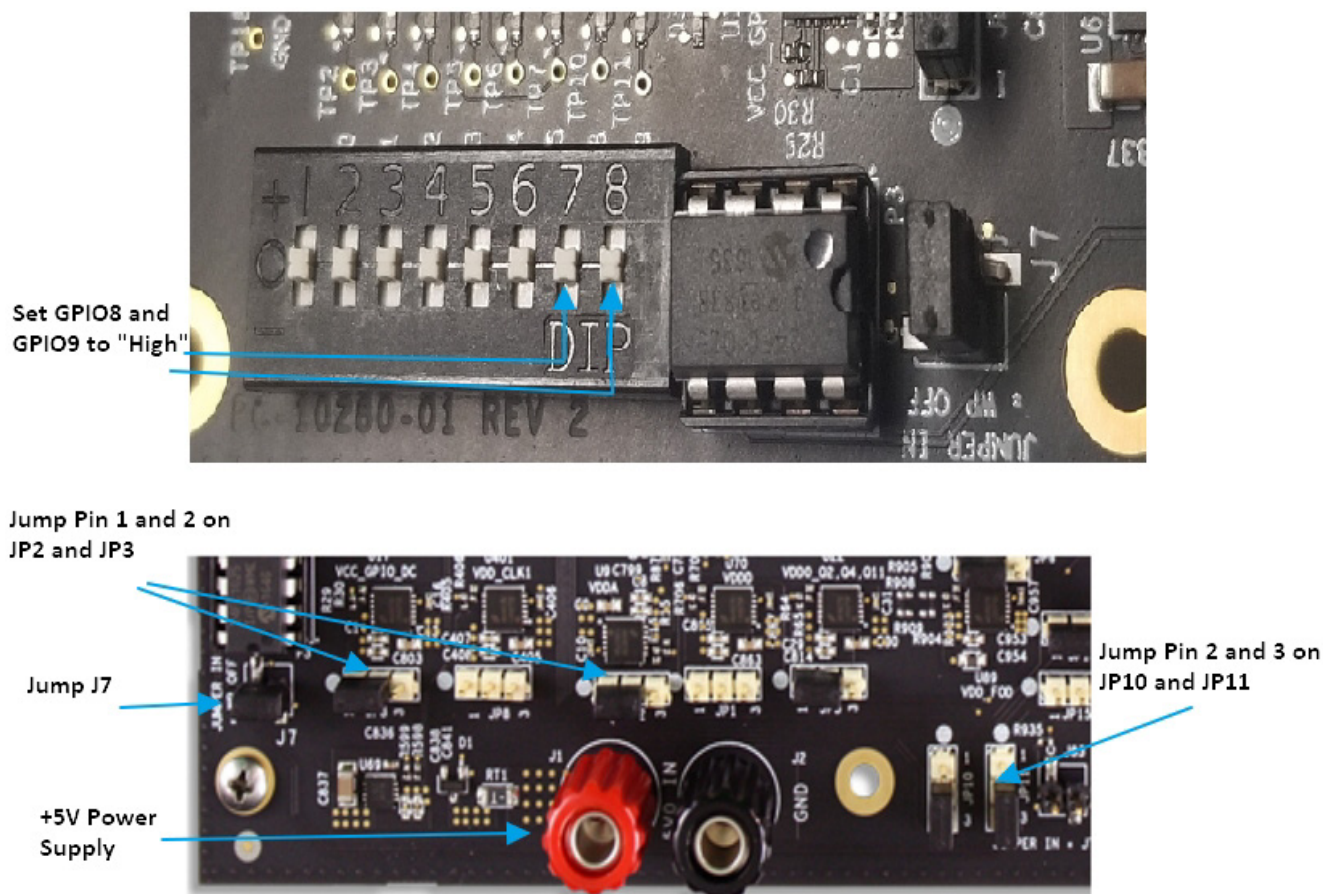


Figure 5. Board Setting for Default Operation



## 2.2 Using Timing Commander to Control the Board

Once the default operation is successful, complete the following steps to configure and program the ClockMatrix device per your specific application requirements using Timing Commander GUI tools:

1. Power up the board and set the main serial port in I<sup>2</sup>C mode by GPIO9 = "high". Set GPIO8 = "high". Connect the board to the PC.
2. Start the Timing Commander software. You will see options of "New Settings File" and "Open Settings file". For a new configuration, select "New Settings File".

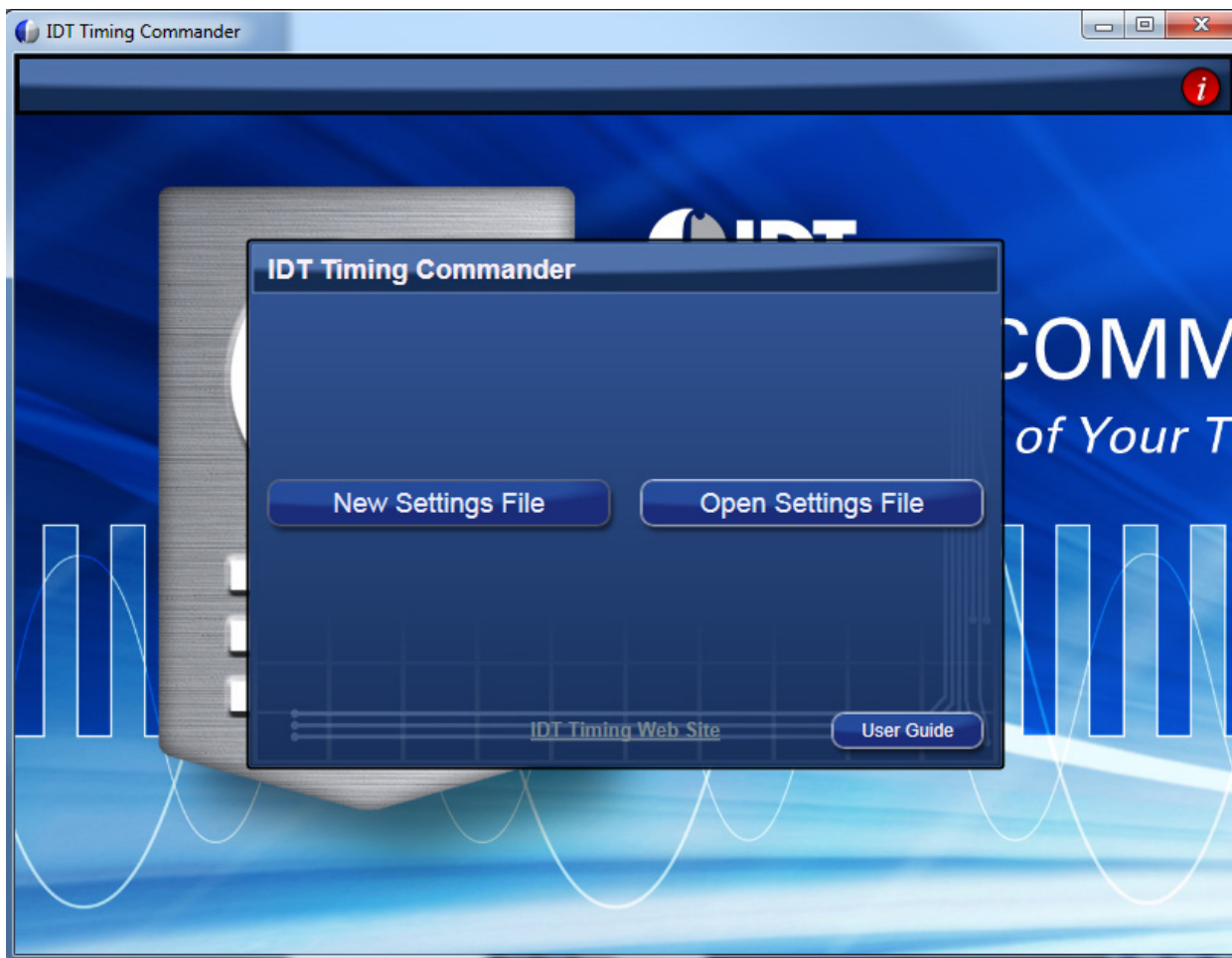


Figure 6. Starting Up Timing Commander GUI



- After selecting “New Settings File”, a device selection window will pop-up. In the window, choose the intended device in the list (in this example, 8A34001 is selected). Click the button at the lower right corner of the window (red circle) to browse and select the correct personality file (in this example, personality v4.6 is selected). Click OK.

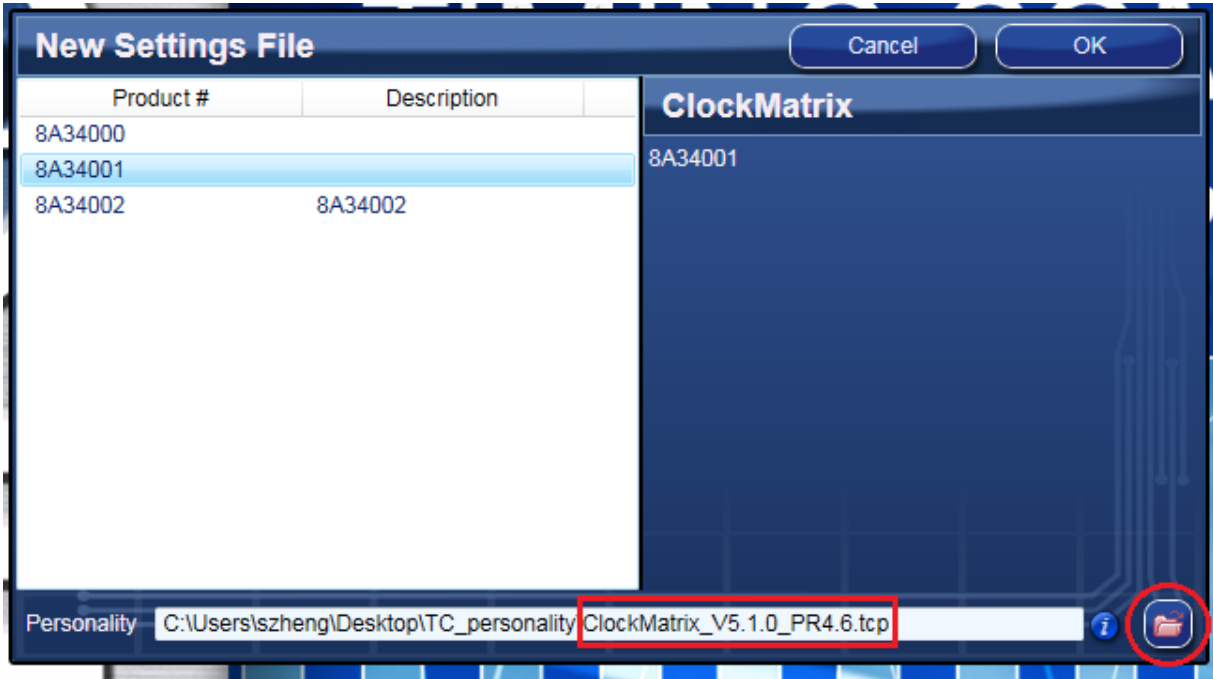


Figure 7. Selecting 8A34001 Using Personality File v4.6

- The GUI window with the 8A34001 block diagram will open for configurations; or if “Open Settings File” is selected in Step 3, you will be prompted to browse and select an existing .tcs file and the personality file. When the configuration file is open, all configured values will be displayed (see Figure 8).

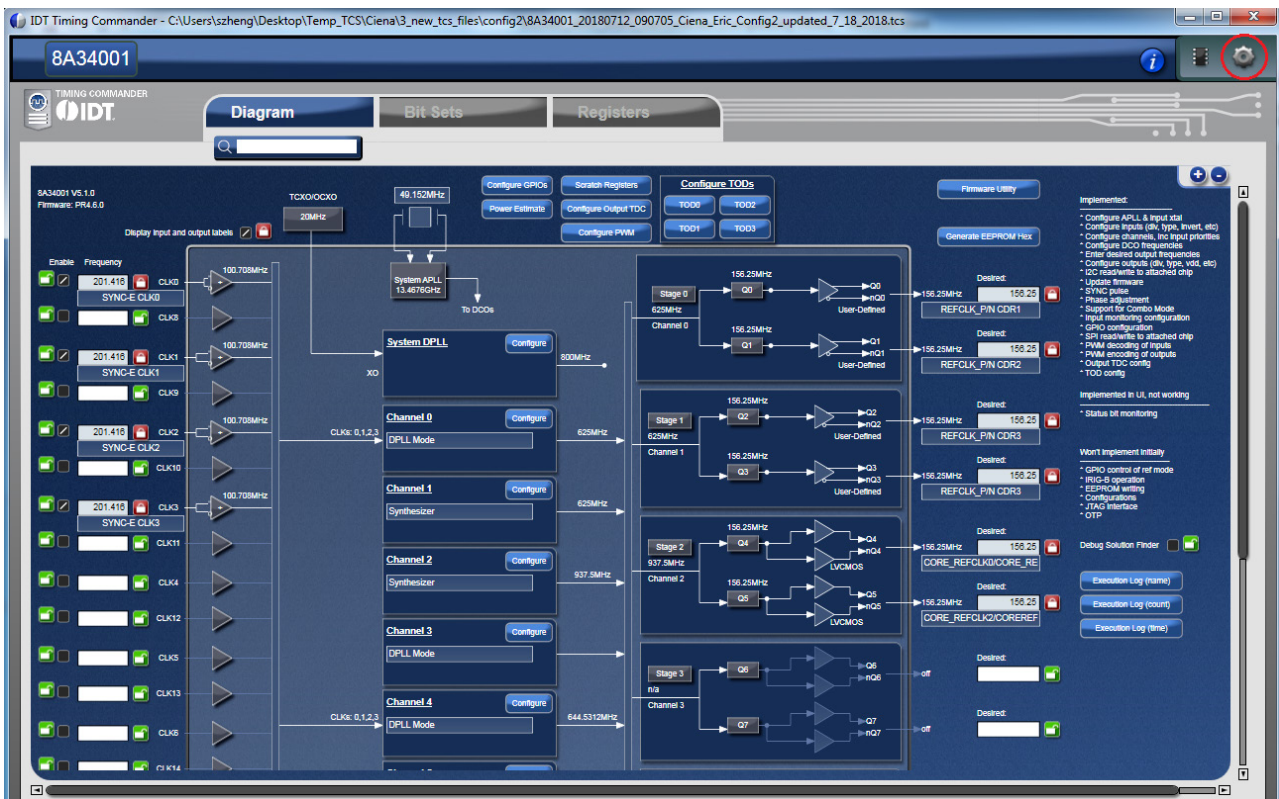


Figure 8. Timing Commander GUI with a Settings File Opened

- In order to connect the board with Timing Commander (PC), click the button (red circle) at the up-right corner of the GUI to set up the communication protocols (see [Figure 8](#)).  
After I<sup>2</sup>C and one-byte addressing are selected, click *OK* to close the window.

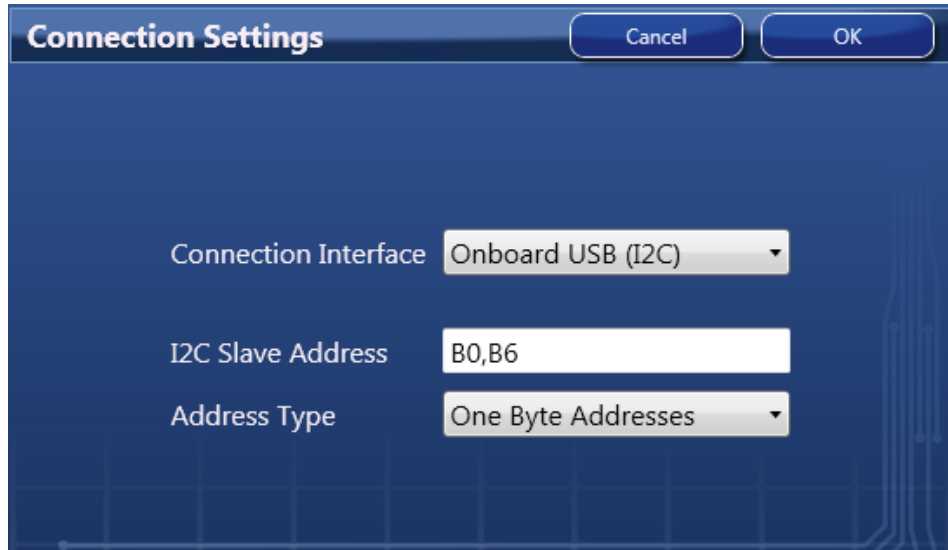


Figure 9. Setting I<sup>2</sup>C for Connecting the Board with GUI

- Click on the chip symbol at the upper-right corner to initiate the connection. The connection is valid when a green band appears at the upper-right corner of the window, as shown in [Figure 10](#).

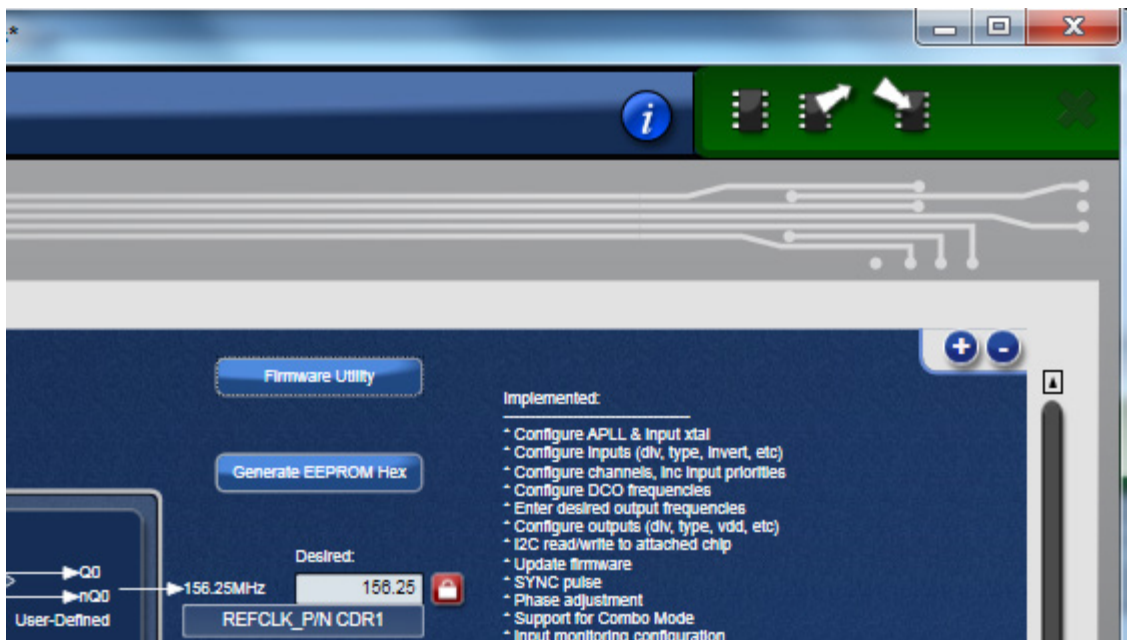


Figure 10. Green Band Appears when a Valid Connection is Made

- If ClockMatrix chip's firmware, or firmware loaded from EEPROM, has a different version from that in the Personality file, a firmware version mismatch warning message will appear. Click "Close" button to close the message window and a connection is made.

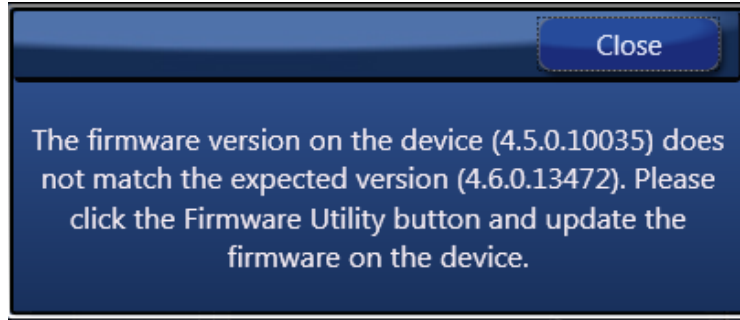


Figure 11. Firmware Version Mismatch Warning Message

- Once the connection is made, the firmware version can be read within the GUI. Click the "Firmware Utility" button to bring up the Firmware Utility window, as shown in Figure 12.



Figure 12. Reading Firmware Version

- Within the Firmware Utility window, click the "Get Firmware Version" button to read the firmware version.

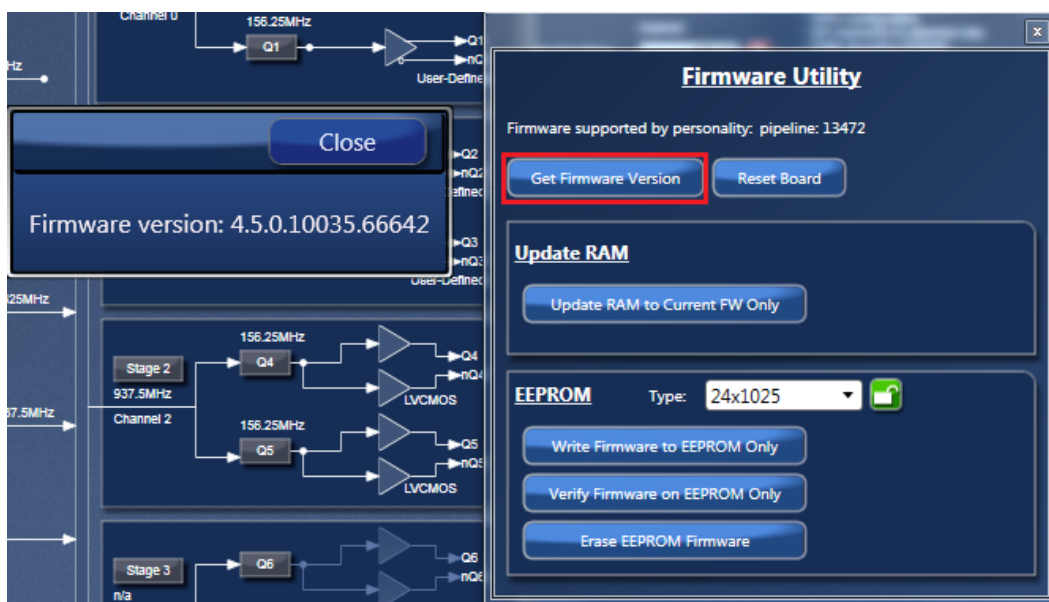


Figure 13. Read Firmware Version of ClockMatrix Chip

10. In the case where the firmware version mismatches each other, a firmware upgrade is necessary to update the chip’s firmware. To do so, complete the steps in [How to Upgrade the Firmware](#) to update the chip’s firmware.

### 2.3 Output Terminations and Rework to Receive a 1PPS Input

All outputs are terminated with a 100Ω resistor across the output pair. When the output is configured as PECL2.5 and PECL3.3 or user-defined differential, the output clock will still be switching. The amplitude may be different from expected until the hardware termination matches the signaling type configured for the output.

The following rework must be implemented in order to support a 1PPS input clock. All input clocks for this board are AC-coupled and terminated as shown in [Figure 14](#).

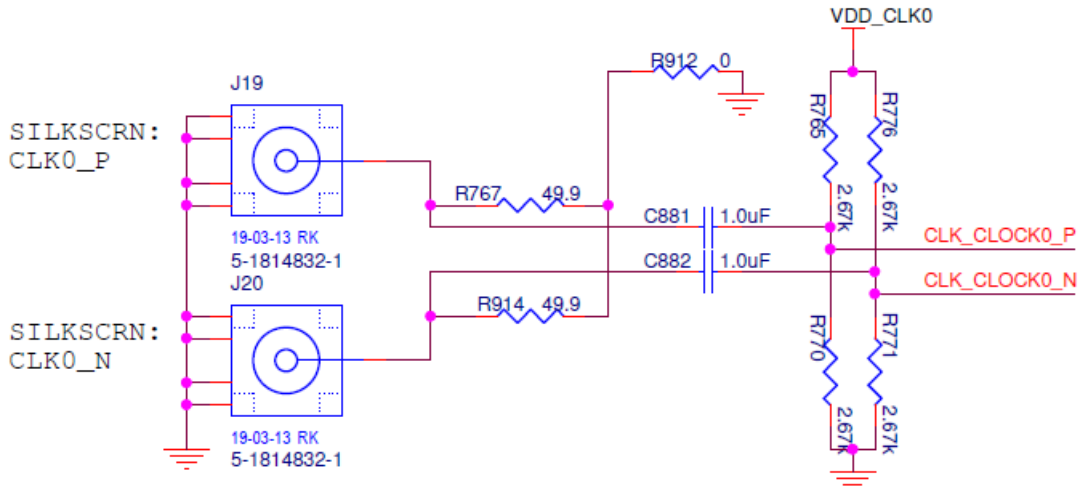


Figure 14. AC Coupling and Terminations for Input Clock

For a 1PPS input, a single-ended input with DC-coupling is recommended. As such, the populated AC-coupling capacitor must be removed and the input must be configured as LVCMOS, not differential.

- In [Figure 14](#), to make CLK0 supportive of 1PPS input, first configure CLK0 as LVCMOS in Timing Commander (see [Figure 15](#)).

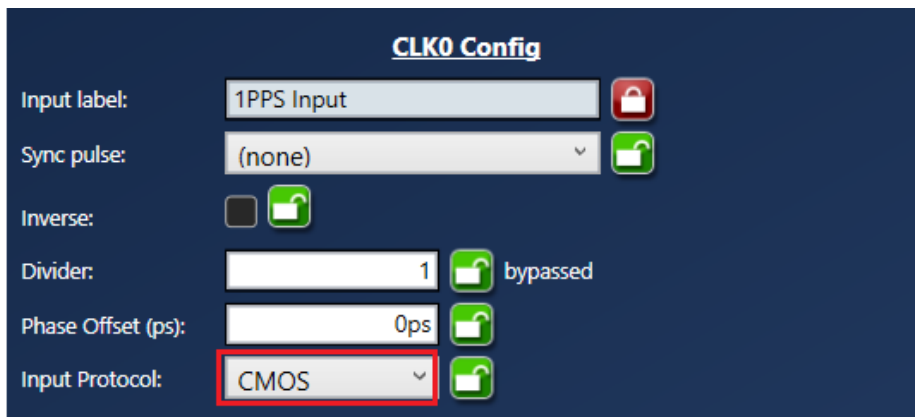


Figure 15. Configuring CLK0 as CMOS to Receive a 1PPS Input

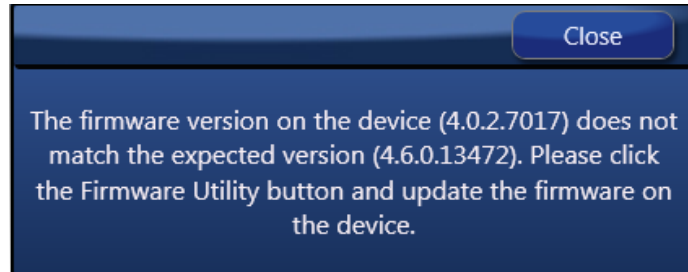
- Once in LVCMOS mode, CLK0\_P and CLK0\_N will be two separate LVCMOS inputs instead of a differential pair. To make CLK0\_P receive a 1PPS input, replace C881 with a 0Ω resistor; and at the same time, remove R765 and R770.



### 3. How to Upgrade the Firmware

#### 3.1 Upload Firmware to the RAM

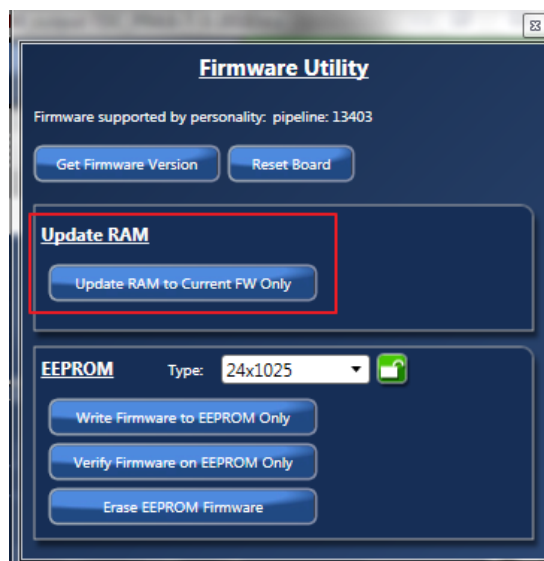
1. Connect to the EVK board.
2. Power up the board with no EEPROM present. This ensures the firmware is 4.0.2.7017, as displayed in the figure.
3. The GUI will indicate that the firmware on the chip does not match the GUI firmware. Press “Close”.



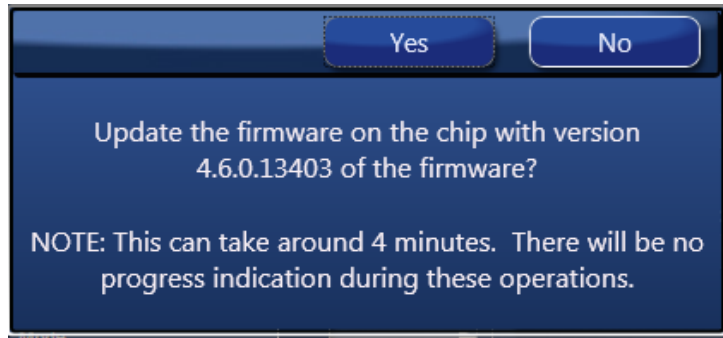
4. Open the “Firmware Utility” window by clicking on the button as follows.



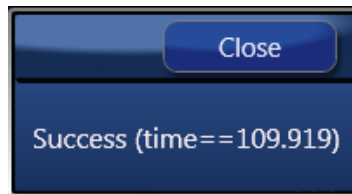
5. Update the Firmware first. Press “Update RAM to Current FW Only”.



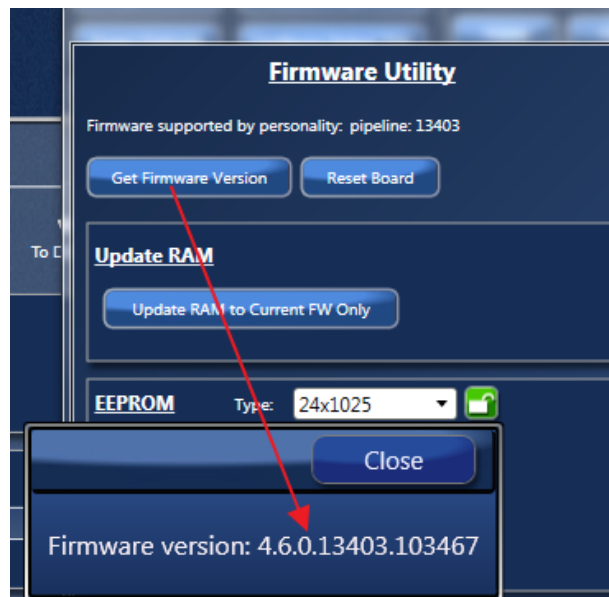
6. In the next window, press “Yes” and wait around 3–4 minutes.



7. Once the firmware is updated, the following window will indicate a successful update. Click “Close”.

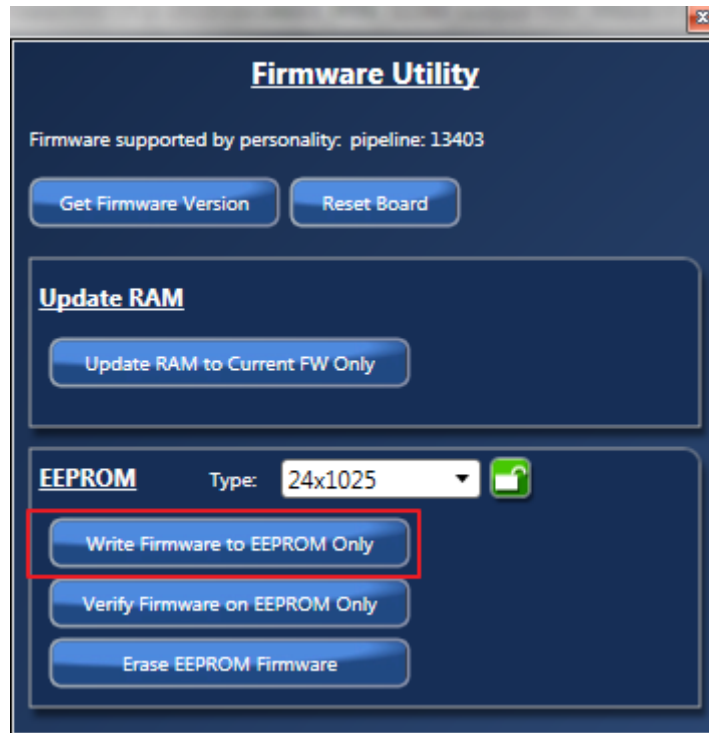


8. Press “Get Firmware Version” to verify that the RAM was updated correctly, then click “Close”.

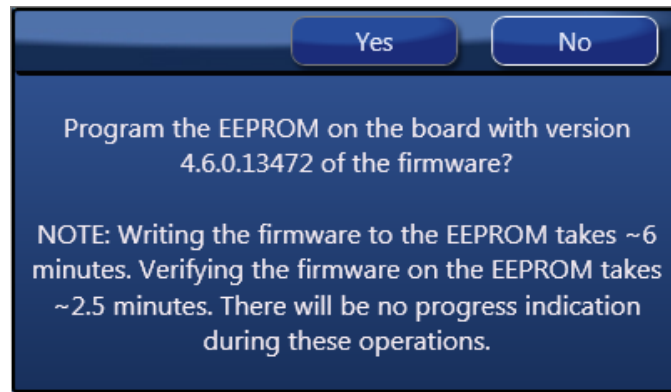


### 3.2 Upload Firmware into the EEPROM

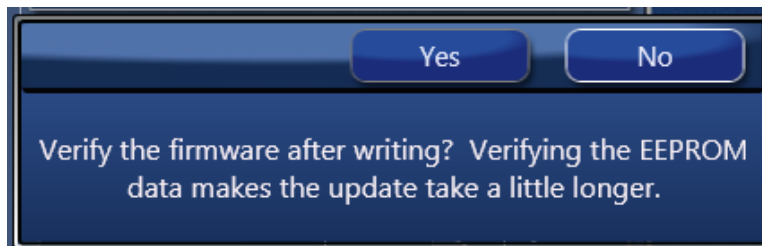
1. Once the firmware has been updated to the chip (steps 1 to 8), install the EEPROM on the EVK board.
2. Press “Write Firmware to EEPROM Only”.



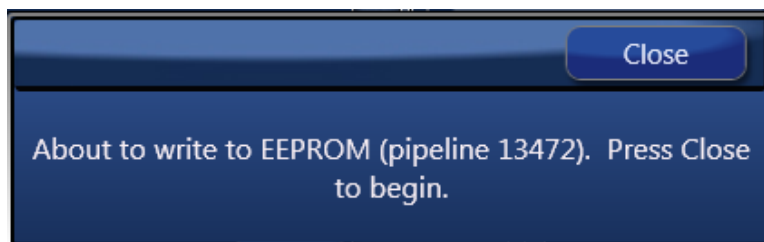
3. In the next window, press “Yes”.



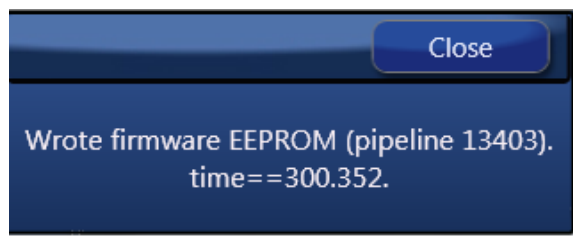
4. When asked to “Verify” the EEPROM, press “No”.



5. In the next window, press “Close” to start the EEPROM write.



6. Wait about 5 minutes for the EEPROM write to complete. Click “Close” in the following window.



### 3.3 Verify the EEPROM Programming

7. Power cycle the board.
8. Disconnect and reconnect to the chip.
9. Read back the firmware version to ensure it is correct (see steps 3 to 7).



## 4. Schematic Diagrams

For schematic diagrams, see [ClockMatrix 48QFN Evaluation Board Schematic](#).

## 5. Ordering Information

Part Number	Description
8A34043-EVK	8A3xxxx 48QFN Evaluation Kit

## 6. Revision History

Revision	Date	Description
1.01	Jun 3, 2025	<ul style="list-style-type: none"><li>Reformatted to the latest Renesas template.</li><li>Removed embedded schematics and added a web link to the schematics in section 4.</li></ul>
-	Feb 15, 2019	Initial release.

## IMPORTANT NOTICE AND DISCLAIMER

RENESAS ELECTRONICS CORPORATION AND ITS SUBSIDIARIES (“RENESAS”) PROVIDES TECHNICAL SPECIFICATIONS AND RELIABILITY DATA (INCLUDING DATASHEETS), DESIGN RESOURCES (INCLUDING REFERENCE DESIGNS), APPLICATION OR OTHER DESIGN ADVICE, WEB TOOLS, SAFETY INFORMATION, AND OTHER RESOURCES “AS IS” AND WITH ALL FAULTS, AND DISCLAIMS ALL WARRANTIES, EXPRESS OR IMPLIED, INCLUDING, WITHOUT LIMITATION, ANY IMPLIED WARRANTIES OF MERCHANTABILITY, FITNESS FOR A PARTICULAR PURPOSE, OR NON-INFRINGEMENT OF THIRD-PARTY INTELLECTUAL PROPERTY RIGHTS.

These resources are intended for developers who are designing with Renesas products. You are solely responsible for (1) selecting the appropriate products for your application, (2) designing, validating, and testing your application, and (3) ensuring your application meets applicable standards, and any other safety, security, or other requirements. These resources are subject to change without notice. Renesas grants you permission to use these resources only to develop an application that uses Renesas products. Other reproduction or use of these resources is strictly prohibited. No license is granted to any other Renesas intellectual property or to any third-party intellectual property. Renesas disclaims responsibility for, and you will fully indemnify Renesas and its representatives against, any claims, damages, costs, losses, or liabilities arising from your use of these resources. Renesas' products are provided only subject to Renesas' Terms and Conditions of Sale or other applicable terms agreed to in writing. No use of any Renesas resources expands or otherwise alters any applicable warranties or warranty disclaimers for these products.

(Disclaimer Rev.1.01)

### Corporate Headquarters

TOYOSU FORESIA, 3-2-24 Toyosu,  
Koto-ku, Tokyo 135-0061, Japan  
[www.renesas.com](http://www.renesas.com)

### Trademarks

Renesas and the Renesas logo are trademarks of Renesas Electronics Corporation. All trademarks and registered trademarks are the property of their respective owners.

### Contact Information

For further information on a product, technology, the most up-to-date version of a document, or your nearest sales office, please visit [www.renesas.com/contact-us/](http://www.renesas.com/contact-us/).