

Linux Interface Specification Device Driver RSPi

User's Manual: Software

RZ/G2L Group, RZ/V2L Group, RZ/V2N Group,
RZ/G3E Group and RZ/Five

All information contained in these materials, including products and product specifications, represents information on the product at the time of publication and is subject to change by Renesas Electronics Corp. without notice. Please review the latest information published by Renesas Electronics Corp. through various means, including the Renesas Electronics Corp. website (<http://www.renesas.com>).

Notice

1. Descriptions of circuits, software and other related information in this document are provided only to illustrate the operation of semiconductor products and application examples. You are fully responsible for the incorporation or any other use of the circuits, software, and information in the design of your product or system. Renesas Electronics disclaims any and all liability for any losses and damages incurred by you or third parties arising from the use of these circuits, software, or information.
2. Renesas Electronics hereby expressly disclaims any warranties against and liability for infringement or any other claims involving patents, copyrights, or other intellectual property rights of third parties, by or arising from the use of Renesas Electronics products or technical information described in this document, including but not limited to, the product data, drawings, charts, programs, algorithms, and application examples.
3. No license, express, implied or otherwise, is granted hereby under any patents, copyrights or other intellectual property rights of Renesas Electronics or others.
4. You shall be responsible for determining what licenses are required from any third parties, and obtaining such licenses for the lawful import, export, manufacture, sales, utilization, distribution or other disposal of any products incorporating Renesas Electronics products, if required.
5. You shall not alter, modify, copy, or reverse engineer any Renesas Electronics product, whether in whole or in part. Renesas Electronics disclaims any and all liability for any losses or damages incurred by you or third parties arising from such alteration, modification, copying or reverse engineering.
6. Renesas Electronics products are classified according to the following two quality grades: "Standard" and "High Quality". The intended applications for each Renesas Electronics product depends on the product's quality grade, as indicated below.

"Standard": Computers; office equipment; communications equipment; test and measurement equipment; audio and visual equipment; home electronic appliances; machine tools; personal electronic equipment; industrial robots; etc.

"High Quality": Transportation equipment (automobiles, trains, ships, etc.); traffic control (traffic lights); large-scale communication equipment; key financial terminal systems; safety control equipment; etc.

Unless expressly designated as a high reliability product or a product for harsh environments in a Renesas Electronics data sheet or other Renesas Electronics document, Renesas Electronics products are not intended or authorized for use in products or systems that may pose a direct threat to human life or bodily injury (artificial life support devices or systems; surgical implantations; etc.), or may cause serious property damage (space system; undersea repeaters; nuclear power control systems; aircraft control systems; key plant systems; military equipment; etc.). Renesas Electronics disclaims any and all liability for any damages or losses incurred by you or any third parties arising from the use of any Renesas Electronics product that is inconsistent with any Renesas Electronics data sheet, user's manual or other Renesas Electronics document.

7. No semiconductor product is absolutely secure. Notwithstanding any security measures or features that may be implemented in Renesas Electronics hardware or software products, Renesas Electronics shall have absolutely no liability arising out of any vulnerability or security breach, including but not limited to any unauthorized access to or use of a Renesas Electronics product or a system that uses a Renesas Electronics product. RENESAS ELECTRONICS DOES NOT WARRANT OR GUARANTEE THAT RENESAS ELECTRONICS PRODUCTS, OR ANY SYSTEMS CREATED USING RENESAS ELECTRONICS PRODUCTS WILL BE INVULNERABLE OR FREE FROM CORRUPTION, ATTACK, VIRUSES, INTERFERENCE, HACKING, DATA LOSS OR THEFT, OR OTHER SECURITY INTRUSION ("Vulnerability Issues"). RENESAS ELECTRONICS DISCLAIMS ANY AND ALL RESPONSIBILITY OR LIABILITY ARISING FROM OR RELATED TO ANY VULNERABILITY ISSUES. FURTHERMORE, TO THE EXTENT PERMITTED BY APPLICABLE LAW, RENESAS ELECTRONICS DISCLAIMS ANY AND ALL WARRANTIES, EXPRESS OR IMPLIED, WITH RESPECT TO THIS DOCUMENT AND ANY RELATED OR ACCOMPANYING SOFTWARE OR HARDWARE, INCLUDING BUT NOT LIMITED TO THE IMPLIED WARRANTIES OF MERCHANTABILITY, OR FITNESS FOR A PARTICULAR PURPOSE.
8. When using Renesas Electronics products, refer to the latest product information (data sheets, user's manuals, application notes, "General Notes for Handling and Using Semiconductor Devices" in the reliability handbook, etc.), and ensure that usage conditions are within the ranges specified by Renesas Electronics with respect to maximum ratings, operating power supply voltage range, heat dissipation characteristics, installation, etc. Renesas Electronics disclaims any and all liability for any malfunctions, failure or accident arising out of the use of Renesas Electronics products outside of such specified ranges.
9. Although Renesas Electronics endeavors to improve the quality and reliability of Renesas Electronics products, semiconductor products have specific characteristics, such as the occurrence of failure at a certain rate and malfunctions under certain use conditions. Unless designated as a high reliability product or a product for harsh environments in a Renesas Electronics data sheet or other Renesas Electronics document, Renesas Electronics products are not subject to radiation resistance design. You are responsible for implementing safety measures to guard against the possibility of bodily injury, injury or damage caused by fire, and/or danger to the public in the event of a failure or malfunction of Renesas Electronics products, such as safety design for hardware and software, including but not limited to redundancy, fire control and malfunction prevention, appropriate treatment for aging degradation or any other appropriate measures. Because the evaluation of microcomputer software alone is very difficult and impractical, you are responsible for evaluating the safety of the final products or systems manufactured by you.
10. Please contact a Renesas Electronics sales office for details as to environmental matters such as the environmental compatibility of each Renesas Electronics product. You are responsible for carefully and sufficiently investigating applicable laws and regulations that regulate the inclusion or use of controlled substances, including without limitation, the EU RoHS Directive, and using Renesas Electronics products in compliance with all these applicable laws and regulations. Renesas Electronics disclaims any and all liability for damages or losses occurring as a result of your noncompliance with applicable laws and regulations.
11. Renesas Electronics products and technologies shall not be used for or incorporated into any products or systems whose manufacture, use, or sale is prohibited under any applicable domestic or foreign laws or regulations. You shall comply with any applicable export control laws and regulations promulgated and administered by the governments of any countries asserting jurisdiction over the parties or transactions.
12. It is the responsibility of the buyer or distributor of Renesas Electronics products, or any other party who distributes, disposes of, or otherwise sells or transfers the product to a third party, to notify such third party in advance of the contents and conditions set forth in this document.
13. This document shall not be reprinted, reproduced or duplicated in any form, in whole or in part, without prior written consent of Renesas Electronics.
14. Please contact a Renesas Electronics sales office if you have any questions regarding the information contained in this document or Renesas Electronics products.

(Note1) "Renesas Electronics" as used in this document means Renesas Electronics Corporation and also includes its directly or indirectly controlled subsidiaries.

(Note2) "Renesas Electronics product(s)" means any product developed or manufactured by or for Renesas Electronics.

(Rev. 1.12 Jul 2025)

Corporate Headquarters

TOYOSU FORESIA, 3-2-24 Toyosu,
Koto-ku, Tokyo 135-0061, Japan

www.renesas.com

Trademarks

Renesas and the Renesas logo are trademarks of Renesas Electronics Corporation. All trademarks and registered trademarks are the property of their respective owners.

Contact information

For further information on a product, technology, the most up-to-date version of a document, or your nearest sales office, please visit:
www.renesas.com/contact/.

General Precautions in the Handling of Microprocessing Unit and Microcontroller Unit Products

The following usage notes are applicable to all Microprocessing unit and Microcontroller unit products from Renesas. For detailed usage notes on the products covered by this document, refer to the relevant sections of the document as well as any technical updates that have been issued for the products.

1. Precaution against Electrostatic Discharge (ESD)

A strong electrical field, when exposed to a CMOS device, can cause destruction of the gate oxide and ultimately degrade the device operation. Steps must be taken to stop the generation of static electricity as much as possible, and quickly dissipate it when it occurs. Environmental control must be adequate. When it is dry, a humidifier should be used. This is recommended to avoid using insulators that can easily build up static electricity. Semiconductor devices must be stored and transported in an anti-static container, static shielding bag or conductive material. All test and measurement tools including work benches and floors must be grounded. The operator must also be grounded using a wrist strap. Semiconductor devices must not be touched with bare hands. Similar precautions must be taken for printed circuit boards with mounted semiconductor devices.

2. Processing at power-on

The state of the product is undefined at the time when power is supplied. The states of internal circuits in the LSI are indeterminate and the states of register settings and pins are undefined at the time when power is supplied. In a finished product where the reset signal is applied to the external reset pin, the states of pins are not guaranteed from the time when power is supplied until the reset process is completed. In a similar way, the states of pins in a product that is reset by an on-chip power-on reset function are not guaranteed from the time when power is supplied until the power reaches the level at which resetting is specified.

3. Input of signal during power-off state

Do not input signals or an I/O pull-up power supply while the device is powered off. The current injection that results from input of such a signal or I/O pull-up power supply may cause malfunction and the abnormal current that passes in the device at this time may cause degradation of internal elements. Follow the guideline for input signal during power-off state as described in your product documentation.

4. Handling of unused pins

Handle unused pins in accordance with the directions given under handling of unused pins in the manual. The input pins of CMOS products are generally in the high-impedance state. In operation with an unused pin in the open-circuit state, extra electromagnetic noise is induced in the vicinity of the LSI, an associated shoot-through current flows internally, and malfunctions occur due to the false recognition of the pin state as an input signal become possible.

5. Clock signals

After applying a reset, only release the reset line after the operating clock signal becomes stable. When switching the clock signal during program execution, wait until the target clock signal is stabilized. When the clock signal is generated with an external resonator or from an external oscillator during a reset, ensure that the reset line is only released after full stabilization of the clock signal. Additionally, when switching to a clock signal produced with an external resonator or by an external oscillator while program execution is in progress, wait until the target clock signal is stable.

6. Voltage application waveform at input pin

Waveform distortion due to input noise or a reflected wave may cause malfunction. If the input of the CMOS device stays in the area between V_{IL} (Max.) and V_{IH} (Min.) due to noise, for example, the device may malfunction. Take care to prevent chattering noise from entering the device when the input level is fixed, and also in the transition period when the input level passes through the area between V_{IL} (Max.) and V_{IH} (Min.).

7. Prohibition of access to reserved addresses

Access to reserved addresses is prohibited. The reserved addresses are provided for possible future expansion of functions. Do not access these addresses as the correct operation of the LSI is not guaranteed.

8. Differences between products

Before changing from one product to another, for example to a product with a different part number, confirm that the change will not lead to problems. The characteristics of a microprocessing unit or microcontroller unit products in the same group but having a different part number might differ in terms of internal memory capacity, layout pattern, and other factors, which can affect the ranges of electrical characteristics, such as characteristic values, operating margins, immunity to noise, and amount of radiated noise. When changing to a product with a different part number, implement a system-evaluation test for the given product.

How to Use This Manual

1. Purpose and Target Readers

This manual is designed to provide the user with an understanding of the hardware functions and electrical characteristics of the MPU. It is intended for users designing application systems incorporating the MPU.. It is intended for users developing software incorporating the processors. A basic knowledge of software development and Linux systems is necessary in order to use this document.

Particular attention should be paid to the precautionary notes when using the manual. These notes occur within the body of the text, at the end of each section, and in the Usage Notes section.

The revision history summarizes the locations of revisions and additions. It does not list all revisions. Refer to the text of the manual for details.

The following documents apply to the RZ/G2L Group, RZ/V2L Group, RZ/V2N Group, RZ/G3E Group and RZ/Five Group. Make sure to refer to the latest versions of these documents. The newest versions of the documents listed may be obtained from the Renesas Electronics Web site.

Document Type	Description	Document Title	Document No.
User's manual for Hardware	Hardware specifications (pin assignments, memory maps, peripheral function specifications, electrical characteristics, timing charts) and operation description Note: Refer to the application notes for details on using peripheral functions.	RZ/G2L Group User's Manual: Hardware	---
		RZ/V2L Group User's Manual: Hardware	---
		RZ/V2N Group User's Manual: Hardware	---
		RZ/G3E Group User's Manual: Hardware	---
		RZ/Five Group User's Manual: Hardware	---
User's manual for Software	Description of RSPI Linux interface Specification	Linux interface Specification Device Driver RSPI	This user's manual
Application Note	Information on using peripheral functions and application examples Sample programs Information on writing programs in assembly language and C	Available from Renesas Electronics Web site.	
Renesas Technical Update	Product specifications, updates on documents, etc.		

2. Notation of Numbers and Symbols

3. Register Notation

4. List of Abbreviations and Acronyms

Abbreviation	Full Form
RSPI	Renesas Serial Peripheral Interface

Table of Contents

1. Overview.....	1
1.1 Overview	1
1.2 Function	1
1.3 Reference.....	2
1.3.1 Standards	2
1.3.2 Related Documents.....	2
1.4 Restrictions	2
1.5 Notice	2
2. Terminology.....	3
3. Operating Environment.....	4
3.1 Hardware Environment	4
3.2 Module Configuration.....	5
3.3 State Transition Diagram	6
4. External Interface.....	7
4.1 Sysfs Interface	7
4.2 External Interface	7
5. Integration.....	8
5.1 Directory Configuration	8
5.2 Integration Procedure	8
5.2.1 Device tree setting	8
5.2.2 Slave mode devicetree setting	10
5.2.3 Slave mode device Interface.....	11
5.2.4 Kernel Configuration	11
5.3 Option Setting	13
5.3.1 Module Parameters	13
5.3.2 Kernel Parameters	13

1. Overview

1.1 Overview

This manual explains the driver module that controls the RSPI on RZ/G2L Group, RZ/V2L Group, RZ/V2N Group, RZ/G3E Group and RZ/Five.

Note: Currently, this device is supported in two kernel versions v5.10 and v6.1 with the information below:

- v5.10: RZ/G2L Group, RZ/V2L Group and RZ/Five Group.
- v6.1: RZ/G2L, RZ/G2LC, RZ/V2N Group and RZ/G3E Group.

1.2 Function

This module transmits/receives data to/from a device connected to the SPI interface on RZ/G2L, RZ/G2LC, RZ/G2UL, RZ/V2L, RZ/V2N, RZ/G3E and RZ/Five and provides the following functions:

- SPI transfer functions
- Data format
- Bit rate adjustment
- Buffer configuration
- SSL control function
- Control in master transfer
- Control in slave transfer
- Interrupt sources
- Loop back mode

Connected Device: This module connects the following device on RZ/G2L and RZ/V2L Evaluation Board Kit.

Table 1-1 Connected device (RZ/G2L, RZ/V2L, and RZ/Five)

Channel	Connected device	Support Status	Remark
RSPI0	-	No	-
RSPI1	Low speed connector PMOD0	Yes	Female headers (CLK, SSL, TX, RX)
RSPI2	-	No	-

Table 1-2 Connected device RZ/V2N

Channel	Connected device	Support Status	Remark
RSPI0	-	No	-
RSPI1	-	No	-
RSPI2	PMOD Type2/2A (SPI) Connector	Yes	Male pins (CLK, SSL, TX, RX)

Table 1-3 Connected device RZ/G3E

Channel	Connected device	Support Status	Remark
RSPI0	PMOD0_2A (SPI) Connector	Yes	Male pins (CLK, SSL, TX, RX)
RSPI1	-	No	-
RSPI2	-	No	-

1.3 Reference

1.3.1 Standards

The following table shows the standard that this module corresponds.

Table 1-4 Standard (RZ/G2L, RZ/V2L, RZ/Five, RZ/V2N and RZ/G3E)

Reference Number	Issue	Title	Edition	Date
-	-	-	-	-

1.3.2 Related Documents

The following table shows the document related to this module.

Table 1-5 Related documents

Number	Issue	Title	Edition	Date
-	-	-	-	-

1.4 Restrictions

The MPU supports slave mode but RZ/G3E SMARC Evaluation Board Kit does not support due to Hardware limitation.

1.5 Notice

There is no notice in this module.

2. Terminology

The following table shows the terminology related to this module.

Table 2-1 Terminology

Terms	Explanation
RSPI	Renesas Serial Peripheral Interface
MOSI	Master Out Slave In
MISO	Master In Slave Out
SSL	Slave Select

3. Operating Environment

3.1 Hardware Environment

The following table lists the hardware needed to use this module.

Table 3-1 Hardware specification (RZ/G2L, RZ/V2L and RZ/Five)

Name	Version	Manufacturer
RZ/G2L Evaluation Board Kit	SMARC module: v01 Carrier board: v03	Renesas Electronics Europe GmbH
RZ/G2LC Evaluation Board Kit	SMARC module: v01 Carrier board: v03	Renesas Electronics Europe GmbH
RZ/G2UL Evaluation Board Kit	SMARC module: v01 Carrier board: v03	Renesas Electronics Europe GmbH
RZ/V2L Evaluation Board Kit	SMARC module: v01 Carrier board: v03	Renesas Electronics Europe GmbH
RZ/Five Evaluation Board Kit	SMARC module: v01 Carrier board: v03	Renesas Electronics Europe GmbH

Table 3-2 Hardware specification RZ/V2N and RZ/G3E

Name	Product number
RZ/V2N Evaluation Kit	RTK0EF0186C03000BJ
RZ/G3E SMARC Evaluation Board Kit	RTK9947E57S01000BE

3.2 Module Configuration

The following figure shows the configuration of this module.

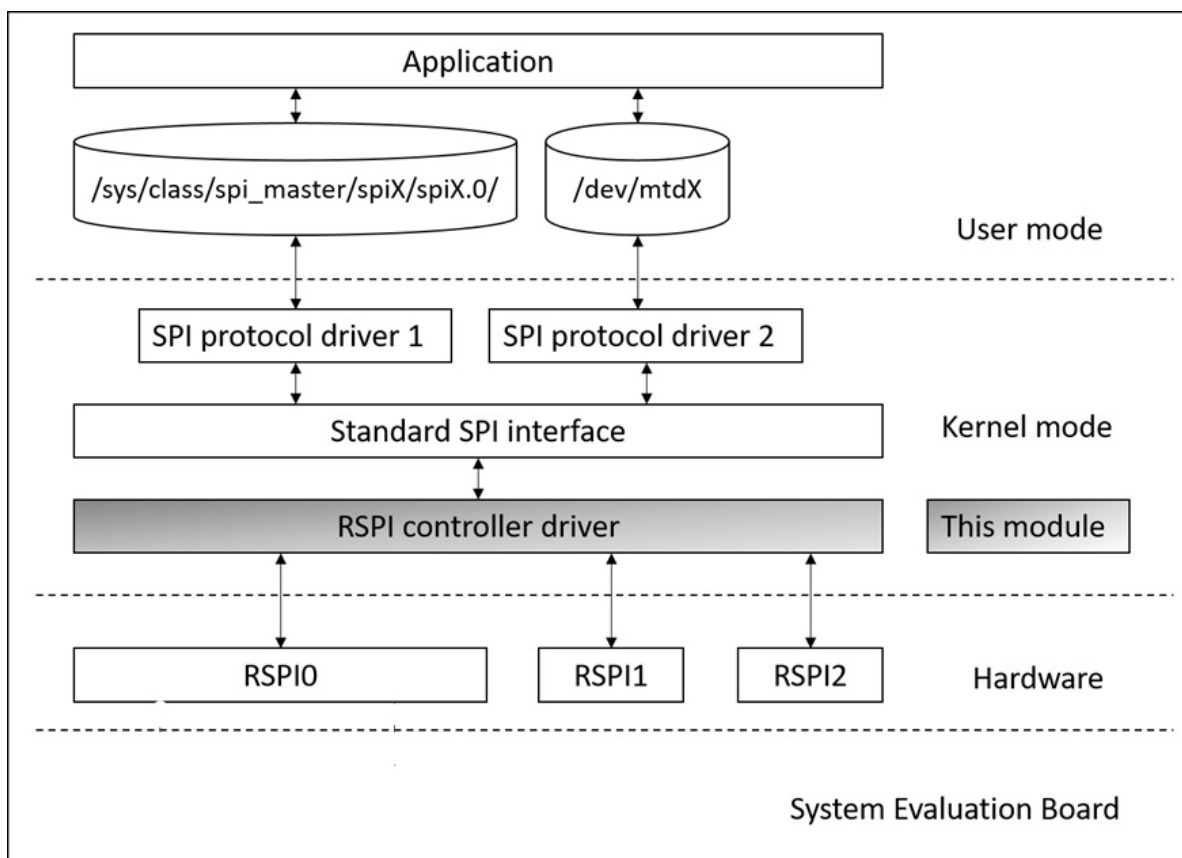


Figure 3-1 RSPI Driver Module configuration (RZ/G2L, RZ/V2L, RZ/V2N, RZ/G3E and RZ/Five)

3.3 State Transition Diagram

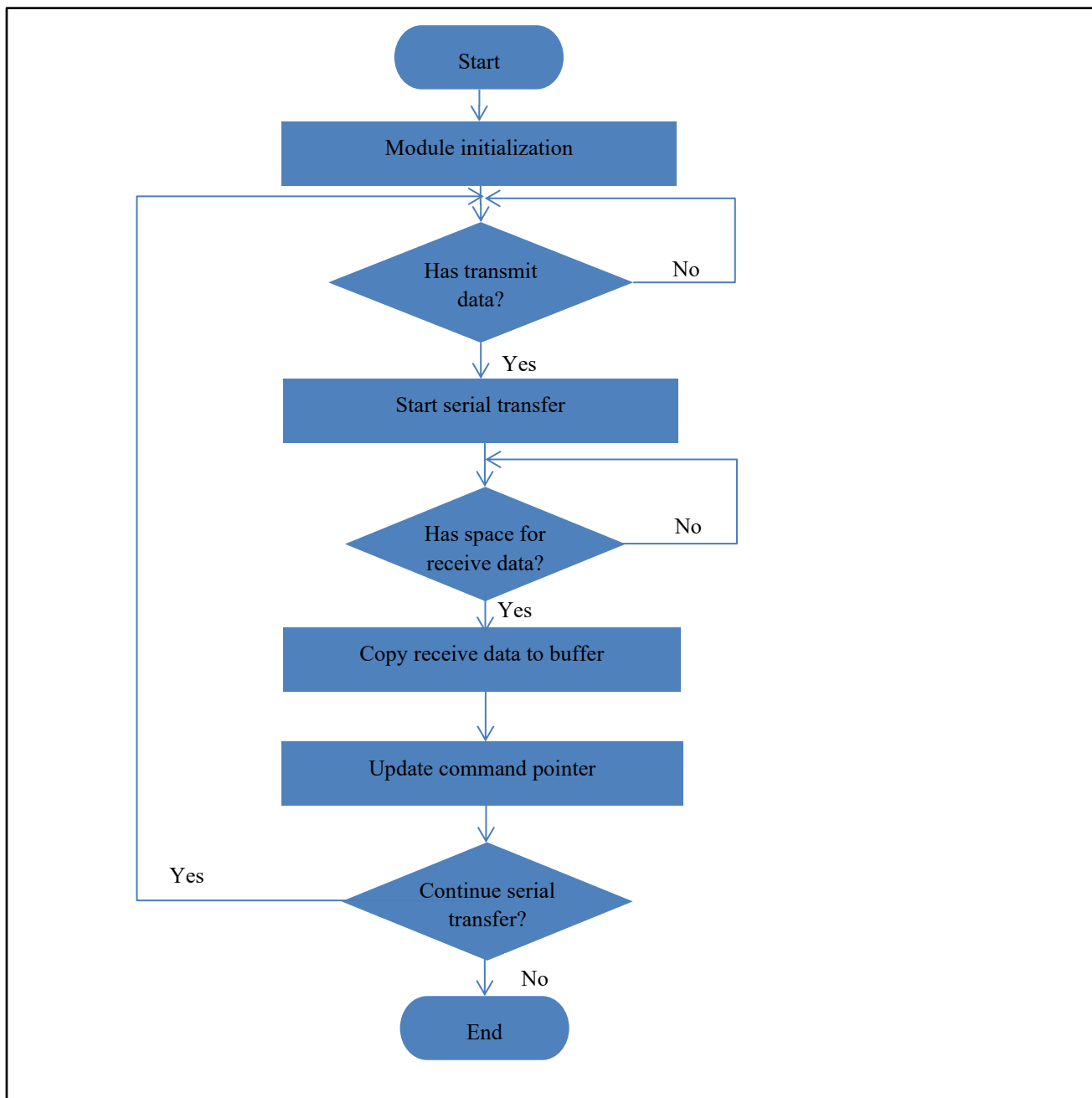


Figure 3-2 RSPI state transition diagram

4. External Interface

4.1 Sysfs Interface

Table 4-1 RSPI device node (RZ/G2L, RZ/V2L, RZ/V2N, RZ/G3E and RZ/Five)

RSPI	Device Node
RSPI0	/sys/class/spi_master/spi0/spi0.0
RSPI1	/sys/class/spi_master/spi1/spi1.0
RSPI2	/sys/class/spi_master/spi2/spi2.0

4.2 External Interface

Detailed explanation is skipped because the external interface of this module is based on Linux.

5. Integration

5.1 Directory Configuration

The directory configuration is shown below.

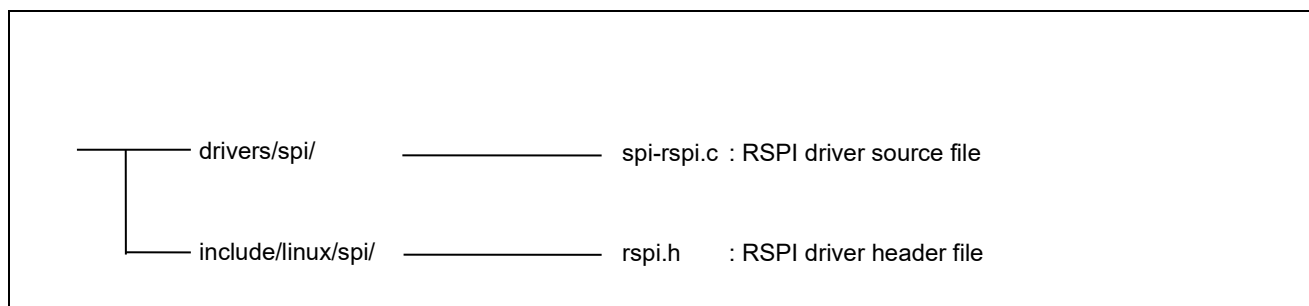


Figure 5-1 Directory configuration (RZ/G2L, RZ/V2L and RZ/Five)

The directory configuration is shown below.

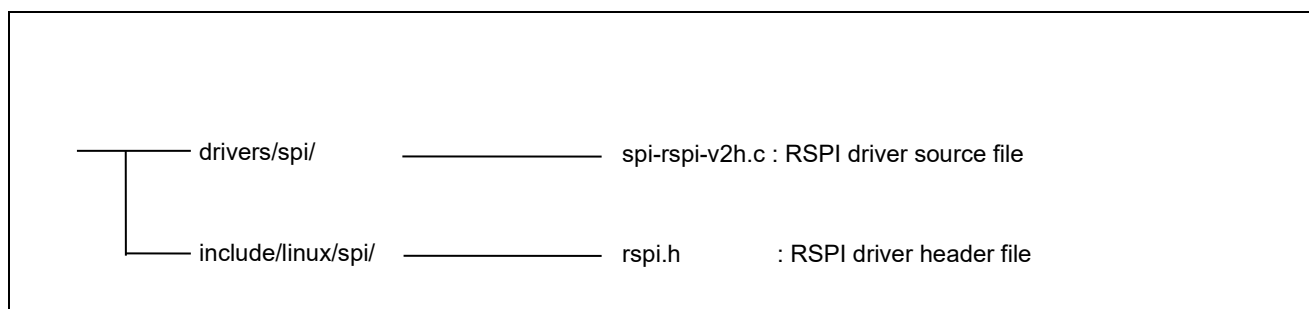


Figure 5-2 Directory configuration (RZ/V2N and RZ/G3E)

5.2 Integration Procedure

- Add required device tree settings including RSPI channels to be used, pins definition, and SPI sub-node device's setting
- Add user space interface support
- Add required kernel configurations of the module

5.2.1 Device tree setting

The target files by board are as following:

- rz-smarc-common.dtsi (RZ/G2L, RZ/G2LC and RZ/V2L)
- rzg2ul-smarc.dtsi (RZ/G2UL)
- rzfive-smarc.dtsi (RZ/Five)
- r9a09g056n44-evk.dts (RZ/V2N)
- rzg3e-smarc.dtsi (RZ/G3E)

(1) Add rspi1 pin function to rzg2l-smarc-pinfunction.dtsi (for RZ/G2L) and rzg2lc-smarc-pinfunction.dtsi for RZG2LC, rzfive-smarc.dtsi for RZ/Five

```
&pinctrl {
    ....
    spi1_pins: spi1 {
        pinmux = <RZG2L_PORT_PINMUX(44, 0, 1)>,
                <RZG2L_PORT_PINMUX(44, 1, 1)>,
                <RZG2L_PORT_PINMUX(44, 2, 1)>,
                <RZG2L_PORT_PINMUX(44, 3, 1)>;
    };
    ....
}
```

Figure 5-3 Pin function setting (RZ/G2L, RZ/G2LC and RZ/V2L)

```
&pinctrl {
    ....
    #if (SW_ET0_EN_N)
        spi1_pins: rspi1 {
            pinmux = <RZG2L_PORT_PINMUX(4, 0, 2)>, /* CK */
                    <RZG2L_PORT_PINMUX(4, 1, 2)>, /* MOSI */
                    <RZG2L_PORT_PINMUX(4, 2, 2)>, /* MISO */
                    <RZG2L_PORT_PINMUX(4, 3, 1)>; /* SSL */
        };
    #endif
}
```

Figure 5-4 Pin function setting (RZ/G2UL and RZ/Five)

Add rspi2 pin function to r9a09g056n44-evk.dts (for RZ/V2N)

```
&pinctrl {
    ....
    spi2_pins: spi2 {
        pinmux = <RZG2L_PORT_PINMUX(11, 3, 5)>,
                <RZG2L_PORT_PINMUX(11, 4, 5)>,
                <RZG2L_PORT_PINMUX(10, 7, 5)>,
                <RZG2L_PORT_PINMUX(11, 5, 5)>;
    };
    ....
}
```

Figure 5-5 Pin function setting RZ/V2N

Add rspi0 pin function to rzg3e-smarc.dtsi (for RZ/G3E)

```
&pinctrl {
    ....
    spi0_pins: spi0 {
        pinmux = <RZV2H_PORT_PINMUX(M, 4, 2)>, /* MISOA */
                <RZV2H_PORT_PINMUX(M, 5, 2)>, /* MOSIA */
                <RZV2H_PORT_PINMUX(M, 7, 2)>, /* SSLA0 */
                <RZV2H_PORT_PINMUX(M, 6, 2)>; /* RSPCKA */
    };
    ....
}
```

Figure 5-6 Pin function setting RZ/G3E

(2) Enable status property

```
&spi1 {
    pinctrl-0 = <&spi1_pins>;
    pinctrl-names = "default";

    status = "okay";
};
```

Figure 5-7 Enable node setting in rz-smarc-common.dtsi for RZ/G2L, RZ/G2LC

```
&spi1 {
    #if (SW_ET0_EN_N)
        pinctrl-0 = <&spi1_pins>;
        pinctrl-names = "default";
    #endif

    status = "okay";
};
```

Figure 5-8 Enable node setting in rzg2ul-smarc.dtsi for RZ/G2UL and rzfive-smarc.dtsi for RZ/Five

```
&spi2 {
    pinctrl-0 = <&spi2_pins>;
    pinctrl-names = "default";

    status = "okay";
};
```

Figure 5-9 Enable node setting RZ/V2N

```
&spi0 {
    pinctrl-0 = <&spi0_pins>;
    pinctrl-names = "default";

    status = "okay";
};
```

Figure 5-10 Enable node setting RZ/G3E**5.2.2 Slave mode devicetree setting**

Use the slave device name of the connection destination as the compatible value. The following form is ideal.
Maker name, slave device name.

The editing contents sample for master mode:

```
/* Add a subnode. */
slavedev {
    compatible = "maker,slavedev";
    reg = <0>;
    spi-max-frequency = <25000000>;
    spi-cpha;
    spi-cpol;
};
```

Figure 5-11 The setting for master mode in spi enable node (RZ/G2L, RZ/V2L, RZ/V2N, RZ/G3E and RZ/Five)

The editing contents sample for slave mode:

```
spi-slave;
slave {
    compatible = "maker,slavedev";
    spi-cpha;
    spi-cpol;
};
```

Figure 5-12 The setting for slave mode in spi enable node (RZ/G2L, RZ/V2L and RZ/Five)

5.2.3 Slave mode device Interface

Add the compatible value of the subnode to the next file.

"Maker name, slave device name"; file : drivers/spi/spidev.c

```
static const struct of_device_id spidev_dt_ids[] = {
    ...
    { .compatible = "maker,slavedev" },    <-- Add this line.
    {},
};
```

Figure 5-13 Add slavedev compatible (RZ/G2L, RZ/V2L, RZ/V2N, RZ/G3E and RZ/Five)

5.2.4 Kernel Configuration

To enable the function of this module, make the following setting with Kernel Configuration.

```
Device Drivers --->
[*] SPI support --->
    [*] Renesas RSPI/QSPI controller
```

Figure 5-14 Kernel configuration (RZ/G2L, RZ/V2L and RZ/Five)

```
Device Drivers --->
[*] SPI support --->
    [*] Renesas RSPI RZ/V2H controller
```

Figure 5-15 Kernel configuration RZ/V2N and RZ/G3E

Add the configuration to enable slave mode:

arch/arm64/configs/defconfig:

```
CONFIG_SPI_SLAVE=y
```

Note:

DIP-SWITCH SETTING:

Set up dip switch to enable RSPI1:

- RZ/G2LC: Define SW_RSPI_CAN (in rzg2lc-smarc.dtsi) is 0 and sw1-4 (on module board) is ON.

- RZ/G2UL: Define SW_ET0_EN_N (in rzg2ul-smarc.dtsi) is 1 and sw1-3 (on module board) is OFF.
- RZ/Five: Define SW_ET0_EN_N (in rzfive-smarc.dtsi) is 1 and sw1-3 (on module board) is OFF.
- RZ/V2N: No dip switch but please be aware of 5V/3.3V voltage switching.

Enable RSPI's DMA for RZ/G2{L, LC, UL}and RZ/V2L:

```
&spi1 {  
.....  
+      dmas = <&dmac 0x2e99>, <&dmac 0x2e9a>;  
+      dma-names = "tx", "rx";  
.....  
};
```

Please use the configure as below to enable DMA if RSPI0, RSPI2 are used.

RSPI0:

Define in devicetree:

```
      dmas = <&dmac 0x2e95>, <&dmac 0x2e96>;  
      dma-names = "tx", "rx";
```

RSPI2:

Define in devicetree:

```
      dmas = <&dmac 0x2e9d>, <&dmac 0x2e9e>;  
      dma-names = "tx", "rx";
```

Define in devicetree (RZ/V2N):

```
      dmas = <&dmac 0x7F4C91>, <& 0x7F4C90>;  
      dma-names = "tx", "rx";
```

Define in devicetree (RZ/G3E):

```
      dmas = <&dmac1 0x7F448D>, <&dmac1 0x7F448C>;  
      dma-names = "tx", "rx";
```

5.3 Option Setting

5.3.1 Module Parameters

There are no module parameters.

5.3.2 Kernel Parameters

There are no kernel parameters.

Revision History	Linux Interface Specification Device Driver RSPI User's Manual: Software
------------------	---

Rev.	Date	Description	
		Page	Summary
0.50	Apr. 30, 2021	—	First Edition issued
1.0	Jul. 15, 2021	—	No modification, keep version to keep consistent with other documents.
1.1	Sep. 15, 2021	—	Merge RZ/G2L driver manual with RZ/V2L
1.2	Feb. 15, 2022	—	Add RZ/G2UL, RZ/G2LC device
1.3	Mar. 31, 2022	7	Update devicetree setting
1.4	May. 31, 2022	9	Add DMA definitions note.
1.5	June. 24, 2022	9	Add RZ/Five device Update: Modify DMA definitions note
1.6	Sep. 15, 2022	—	No modification
1.7	Dec. 15, 2022	—	No modification
1.8	Mar. 15, 2023	—	No modification, keep version to keep consistent with other documents.
1.9	Mar. 31, 2024	8	Update devicetree setting for slave device in master mode
1.10	May. 30, 2025	1	Add MPU information support for both kernel versions v5.10 and v6.1. Correct 1.2 Function
		8	Correct Figure 5-5
1.11	Jun. 30, 2025	—	Add RZ/V2N support information
1.12	Jul. 22, 2025	—	Add RZ/G3E support information
		10	Replace name 5.2.2 to Slave mode devicetree setting
		11	Replace name 5.2.3 to Slave mode device Interface

Linux Interface Specification Device Driver RSPi
User's Manual: Software

Publication Date: Rev. 1.12 Jul. 22, 2025

Published by: Renesas Electronics Corporation

RZ/G2L Group, RZ/V2L Group, RZ/V2N Group,
RZ/G3E Group, and RZ/Five



Renesas Electronics Corporation