

Embedded Target V6.10.00

Release Note

Contents

1.	Operation Environment.....	3
1.1	Supported Operation Systems	3
1.2	Supported MATLAB® versions	3
1.3	Supported IDE versions	3
1.4	Supported Toolchains	3
1.5	Supported Devices	3
2.	What is new in V6.10.00	3
3.	Point for caution.....	4
3.1	Installing MATLAB® and Embedded Target	4
3.2	Using Embedded Target in other MATLAB® Versions	4
3.3	Following defined code generation procedure	4
3.4	Character String Available for Paths or Block Names.....	4
3.5	Long path to code generation folder.....	4
3.6	Handling of double-Type Data.....	4
3.7	Handling of Endian	4
3.8	Selecting a Device in the Configuration Parameters Dialog Box	4
3.9	Overwriting Model Files	5
3.10	Insufficient Memory Capacity of the Model Selection Device	5
3.11	Memory Area for PIL Simulation Used in the Model Target Program	5
3.12	Setting Breakpoints	5
3.13	Synchronizing Data Communications	5
3.14	Reading a Model Created by the Previous Embedded Target	5
3.15	PIL Simulation Error	6
3.16	Problem of PIL Simulation due to Generation of Resets	6
3.17	Execution Time Measurement Result	6
3.18	Running Embedded Target in the Same Folder.....	6
3.19	Model for Handling Complex Data	6
3.20	Insufficient memory buffer area of MATLAB®.....	6
3.21	Failure in CS+/ e^2 studio initialization	6
3.22	Insufficient linking libraries during code generation of PIL Simulation	6
3.23	Confirming Information Provided by MathWorks.....	6
3.24	Using other FSP and GCC ARM Embedded version when creating RA project on e^2 studio	6
3.25	Length of model name and block name	6
3.26	Run PIL simulation with RA8 Multi-Core Devices with e^2 studio.....	7

3.27	Creating a TrustZone® project during PIL simulation of a RA8 Multi-Core Devices	7
3.28	e ² studio 2025-01 limitations when running PIL Simulation of RA8 Multi-Core Devices	7
3.29	Run PIL Simulation on a converted model (affect model conversion)	8
3.30	Run PIL Simulation with RX Smart Configurator project with Simulator in e ² studio	9
3.31	Run PIL Simulation with RA Multi-Core project with FSP v6.0.0 in e ² studio	9
4.	Restrictions.....	10
4.1	Cannot support measuring execution time.....	10
	Revision History.....	11

1. Operation Environment

This chapter describes the Embedded Target V6.10.00 operating environment.

1.1 Supported Operation Systems

The operating systems on which Embedded Target V6.10.00 operates are as follows:

- Microsoft® Windows® 10 (64-bit)
- Microsoft Windows® 11 (64-bit) (recommended)

1.2 Supported MATLAB® versions

The versions of MATLAB® supported by Embedded Target V6.10.00 are as follows:

R2018b, R2022b, R2023a, R2023b, R2024a, R2024b, R2025a, R2025b

1.3 Supported IDE versions

The IDE and its versions supported by Embedded Target V6.10.00 are as follows:

- CS+ V8.15.00
- e2 studio 2025-10, 2025-12

1.4 Supported Toolchains

The versions of toolchains supported by Embedded Target V6.10.00 are as follows:

Device Family	Renesas	GNU Arm Embedded
RL78	Yes (CC-RL)	No
RX	Yes (CC-RX)	No
RA/ARM	No	Yes

1.5 Supported Devices

See below for devices supported by V6.10.00.

<https://www.renesas.com/embedded-target> *

2. What is new in V6.10.00

This chapter describes the changes in Embedded Target V6.10.00.

1. R2022a is no longer supported.
2. Added CS+ V8.15.00, e² studio 2025-10 and e² studio 2025-12 to supported IDE.
Also, CS+ V8.14.00, e² studio 2025-04.1 and e² studio 2025-07 are no longer supported.
3. This product has been made free.
4. A method using software trace has been added to the time measurement method of RA multi-core devices.
5. When the target IDE is e² studio, we have enabled the feature to generate projects using Smart Configurator when creating projects for RX devices.

3. Point for caution

This chapter describes limitations and points to note when using Embedded Target.

3.1 Installing MATLAB® and Embedded Target

When MATLAB® and Embedded Target are installed on Windows 10, use other folders than “<system drive>:\Program Files” or “<system drive>:\Program Files (x86)” which is the target for the UAC (User Account Control). If they are installed in the target folder for the UAC, problems such that MEX cannot be built or setting of the MATLAB® path cannot be saved will occur and Embedded Target is not usable.

3.2 Using Embedded Target in other MATLAB® Versions

This package recommends MATLAB® R2018b, R2022b to R2025b. When Embedded Target is used in R2018, R2022b or earlier version and R2025b or later version, ask whether the version is supported or not.

3.3 Following defined code generation procedure

Inappropriate configurations can lead to abnormal operations during the PIL Simulation. For these cases, re-create the Simulink® Models to get default configuration defined by MATLAB®/Simulink® and follow the procedure defined procedure for Code Generation.

3.4 Character String Available for Paths or Block Names

Do not use 2-byte characters (e.g., Japanese), spaces, forward slashes, line feeds, and hyphens for a path where the Simulink® model has been stored or a block name required for code generation. If 2-byte characters (e.g., Japanese) are used for a block name for code generation, the character string of MATLAB® will be replaced. If hyphens or spaces are used for a block name, the subsequent character string will be omitted. A series of operations of Embedded Target is enabled but cannot be guaranteed.

3.5 Long path to code generation folder

Windows platform has a constraint about the length of path to files, directories. CS+/e² studio is also affected by this constraint. When the path to code generation folder, which contains the source code generated by embedded models, is stored in a long path, CS+/e² studio cannot build the project. In this case, use shorter path to code generation folder. Or save source files in the absolute path by setting “Yes” in [Property] page – [File Information] – [Save with absolute path], the [Property] page can be opened by right clicking on the source file and choosing Property item.

3.6 Handling of double-Type Data

In the Simulink® model, the double type is handled as 8-byte data. In CS+/e² studio, RX/RA handle the double type as 8-byte data as well as in the Simulink® model.

When you use the double type in RX, select [RX] for [Hardware Implementation] in the Configuration Parameters dialog box. Specify [Handles in double precision (-dbl_size=8)] for the property of CS+/e² studio. Be sure to match the settings of the Configuration Parameters dialog box and the property of CS+/e² studio.

On the otherhands, RL78 do not support 8-byte data. Make sure that the setting in the Simulink® model did not contain 8-byte data. The miss-match of data size can cause failure in PIL simulation.

3.7 Handling of Endian

Little endian and big endian can be selected in RX. Since little endian is set for each tool by default, make the following settings when big endian is selected.

Select [Big Endian] for [Hardware Implementation]- [Byte ordering] in the Configuration Parameters dialog box.

Set [Big-endian data (-endian=big)] for the property of CS+/e² studio. Be sure to match the settings of the Configuration Parameters dialog box and the property of CS+/e² studio.

3.8 Selecting a Device in the Configuration Parameters Dialog Box

An error dialog box appears if correct information on the CS+/e² studio installation folder path has not been specified when a device is selected by clicking on the [Select Device Name] button in the Configuration Parameters dialog box or information on a device list is updated by clicking on the [Device List Update] button.

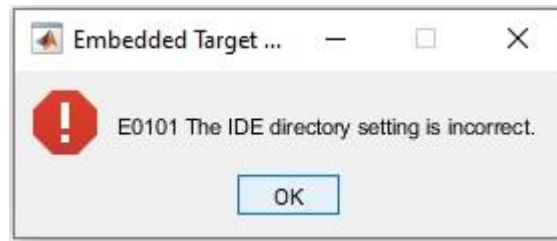


Figure 3-3-1. Error Dialog Box

When an information list of selectable devices is shown in the dialog box, information on the CS+/ e^2 studio installation folder path must be correctly specified in [IDE install directory] because the device-dependent information file for the CS+/ e^2 studio environment needs to be referenced.

3.9 Overwriting Model Files

When a Subsystem block is the target of code generation and a test environment is generated in the model window, the contents of the model file are overwritten. Save the model file as another name after generating a test environment or generate a test environment using the "ecpils_build" command in the MATLAB® command window. The "ecpils_build" command does not overwrite the original model file because it generates a test environment using the copied model file.

3.10 Insufficient Memory Capacity of the Model Selection Device

If a build error occurs in CS+/ e^2 studio or an error occurs in downloading to the debug tool, the memory size of the device in use will be insufficient. Select a device with larger memory size.

3.11 Memory Area for PIL Simulation Used in the Model Target Program

Embedded Target sends and receives a part of data for PIL simulation in the target program. Currently, 3000-byte memory for storing the data for PIL simulation is reserved in the target program by default. Since the sizes of blocks for code generation and data for inputting or outputting the model are required, if 3000-byte memory is insufficient/too big or memory size must be controlled, modify the value of "3000" of "Buffer Size" option that has been defined in "Embedded Target Options".

In general, the RL78 series has the hardware factor quite small compare with RX series. Some big/complicated models can not be built and executed PIL in RL78 series due to lack of RAM size. The lower limit on the size of the target RAM area used by the tool during PILS execution is about: "768 byte + using memory size of user's model-block".

3.12 Setting Breakpoints

When the execution time is measured in algorithm verification, Embedded Target automatically sets breakpoints. Users are prohibited to delete or newly set the breakpoint because it may cause an abnormal operation in PIL simulation. In particular, the execution time cannot be correctly measured. In such a case, terminate MATLAB® and CS+/ e^2 studio and regenerate the test environment.

Remarks Breakpoints that have been automatically set by Embedded Target are automatically deleted after PIL simulation ends.

If the execution time is not measured, Embedded Target does not set breakpoints.

3.13 Synchronizing Data Communications

During PIL simulation, it is prohibited to set a breakpoint or step, start and stop a program in the CS+/ e^2 studio side after simulation is paused in the Simulink® side. If such an operation is performed in the CS+/ e^2 studio side, PIL simulation will operate abnormally. In such a case, terminate MATLAB® and CS+/ e^2 studio and regenerate the test environment.

3.14 Reading a Model Created by the Previous Embedded Target

In the current version of Embedded Target, when a model file that has been created in the old Embedded Target version is opened, the following warning message may be output in the MATLAB® command window.

This is because the specifications of items selected in the Configuration Parameters dialog box were changed. After the model file is overwritten in the environment for this version, that message will not appear, and you need not take any measures for the warning.

Warning: <model name>, <line number> line: Value '<String1>' and parameter '<Parameter>' are conflicted.

3.15 PIL Simulation Error

During PIL simulation, if an error occurs in the target that operates on CS+/e² studio, the following MATLAB® error dialog box may be output. For the error, some reasons will be considered. For example, when PIL simulation is run, if the size of data sent from the target on CS+/e² studio to MATLAB® exceeds that of the communications buffer, communications will be disabled. In this case, modify the value of “3000” of “Buffer Size” option that has been defined in “Embedded Target Options”.

3.16 Problem of PIL Simulation due to Generation of Resets

During PIL simulation, a problem may occur for PIL simulation due to generation of reset signals. Stop the WDT or mask the reset signals in [Debug Tool Settings] – [Mask for Input Signal] of the CS+/e² studio debug tool.

3.17 Execution Time Measurement Result

There is the range of time measurement in the debug tool of CS+/e² studio. If the execution time for Embedded Target is shorter than the minimum measurement time of the debug tool of CS+/e² studio, the measurement result will be 0 ns.

3.18 Running Embedded Target in the Same Folder

On running Embedded Target by placing the Subsystem model and the reference or top-level model in the same folder, when the reference or top-level model is executed after building the Subsystem, delete the old working folder slprj, and then start simulation.

3.19 Model for Handling Complex Data

Embedded Target does not support code generation in the MATLAB®/Simulink® model (Subsystem) which handles complex data.

3.20 Insufficient memory buffer area of MATLAB®

In an error happens during code generation, MATLAB® cannot acquire enough memory buffers for operation due to the limitation of the size assigned for MATLAB® application on Windows platform. In such a case, type “help memory” on MATLAB® command window, and follow the instructions.

3.21 Failure in CS+/e² studio initialization

In some cases, if CS+/e² studio can't perform actions regarding build and download Load Module, re-generate the test environment.

3.22 Insufficient linking libraries during code generation of PIL Simulation

In some cases, during code generation of PIL Simulation, the MEX compiler can't compile generated source code generated by MATLAB® due to mismatch of rtIOStream built-in libraries in MATLAB®, remove them and re-generate test environment again.

3.23 Confirming Information Provided by MathWorks

Embedded Target uses the structure of PIL for MATLAB®/Simulink® and Embedded Coder. Accordingly, use Embedded Target after confirming information (help, release notes, etc.) provided by the MathWorks, Inc.

3.24 Using other FSP and GCC ARM Embedded version when creating RA project on e² studio

When creating project for RA device family on e² studio, there is a case that version of FSP or GCC ARM Embedded is difference with the packages included with e² studio. If the default version of FSP and GCC ARM Embedded do not correct, the project creation will be failed. To specify the correct version, modify the value of “FSP Version” or “GCC ARM Embedded Version” in “Embedded Target Options”.

3.25 Length of model name and block name

If the Simulink model's name and block name are long, an error may occur when building by e² studio.

When converting model:

- Embedded Target creates macro name: + “_” + (Defined in the file “ECPILS_block_no.h”)

- Converted model's name: `_multicore`
- MATLAB Code Generation creates the function name: `_multicore + "_" +`

Length of Function name has limited characters (default is 31). So, if `_multicore + "_" +` larger than limited characters, the string `_multicore` will be striped a part.

This can lead to the error if string `_multicore` is stripped become. Because, at that time, the macro and function name are the same.

There is a solution to fix this issue:

- Solution : Change the maximum function name length by parameter `MaxIdLength` of the model.
Execute the following command from the MATLAB command window.

">>" indicates a command prompt and "[Enter]" indicates the Enter key input.

Example:

```
>> set_param([Model name], 'MaxIdLength', [Value])[Enter]
```

Remark: Refer to <https://www.mathworks.com/help/rtw/ref/maximum-identifier-length.html>

3.26 Run PIL simulation with RA8 Multi-Core Devices with e² studio

Run PIL simulation with RA8 Multi-Core devices and Target MCU is "Multi-Core MCU" in e² studio can only be supported with the following conditions:

- e² studio version 2025-01 and above.
- FSP version 5.8.0 and above.
- Device name is RA8 Multi-Core devices.

3.27 Creating a TrustZone® project during PIL simulation of a RA8 Multi-Core Devices

RA8 Multi-Core devices do not support the creation of TrustZone® projects when running PIL simulations.

3.28 e² studio 2025-01 limitations when running PIL Simulation of RA8 Multi-Core Devices

After successful project creation dialog appears, setting build configuration for `cpu1` 's project as below steps:

- Step 1: Focus on `cpu1` & select "C/C++ Project Settings"

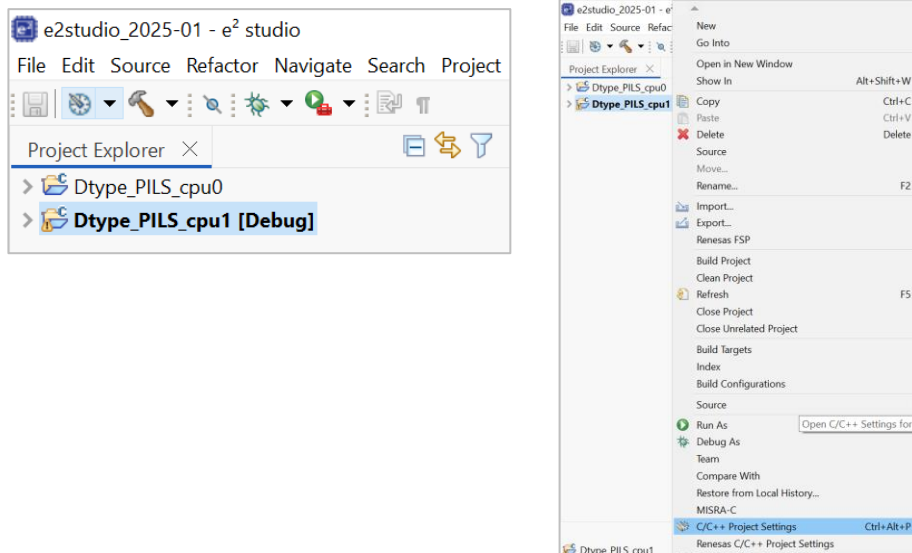


Figure 3-2 Select “C/C++ Project Settings”

- Step 2: Setting as shown below

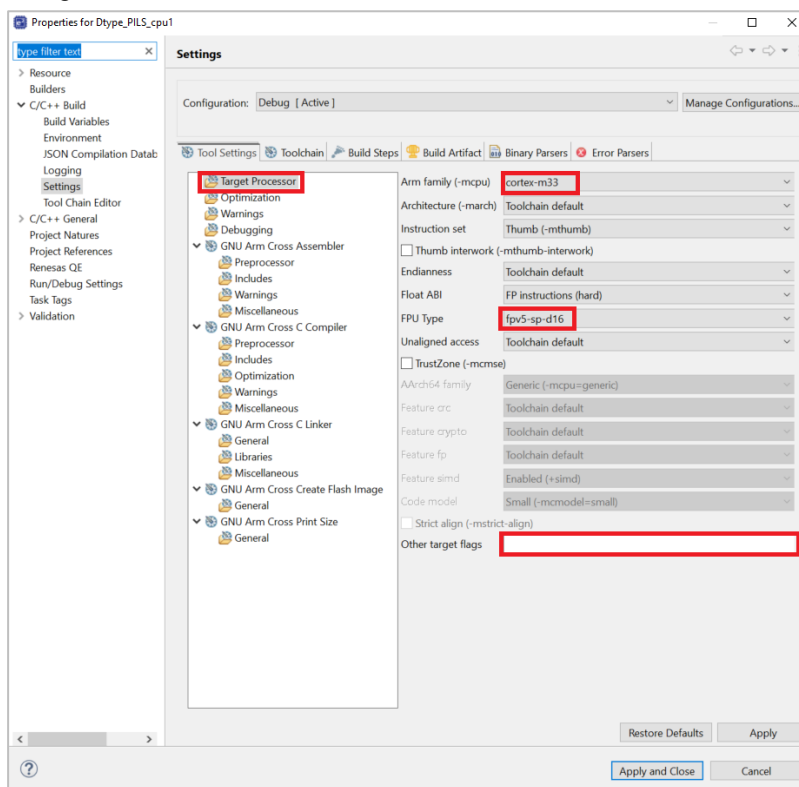


Figure 3-3 Setting “C/C++ Project Settings”

- Step 3: Click “Apply and Close”

3.29 Run PIL Simulation on a converted model (affect model conversion)

It is noted that PIL simulation on a converted model should be executed right after model conversion process is done. Embedded Target operation cannot be guaranteed, if you do any other actions on the same folder

with the converted model. Also, do not reuse e² studio project which previously generated by Embedded Target for a different configured model.

3.30 Run PIL Simulation with RX Smart Configurator project with Simulator in e² studio

For the PIL Simulation work properly, please comment out the `clock_source_select()` function in the `mcu_clocks.c` file located at: `Project/src/r_bsp/mcu/<Device_Series>/mcu_clocks.c` in e² studio.

3.31 Run PIL Simulation with RA Multi-Core project with FSP v6.0.0 in e² studio

When using FSP v6.0.0 to debug a Multi-Core project, an error will occur. This issue has been fixed in FSP v6.1.0 or later. However, if you still want to run with FSP v6.0.0, please refer to the workaround in the following link: [RA8P1 May Operate Incorrectly During Startup](#)

4. Restrictions

This chapter explains the restrictions of Embedded Target V6.10.00 version.

4.1 Cannot support measuring execution time

Embedded Target V6.10.00 does not support “Measure execution time” feature in these cases:

When IDE target is “CS+” and Debug tool is “EZ Emulator”.

When IDE target is “CS+” or “e2 studio” and Debug tool is “COM Port”

When IDE target is “e2 studio” and Debug tool is “Simulator”.

Revision History

Rev.	Date	Description	
		Page	Summary
1.00	Feb.01.26	All	First Edition issued

General Precautions in the Handling of Microprocessing Unit and Microcontroller Unit Products

The following usage notes are applicable to all Microprocessing unit and Microcontroller unit products from Renesas. For detailed usage notes on the products covered by this document, refer to the relevant sections of the document as well as any technical updates that have been issued for the products.

1. Precaution against Electrostatic Discharge (ESD)

A strong electrical field, when exposed to a CMOS device, can cause destruction of the gate oxide and ultimately degrade the device operation. Steps must be taken to stop the generation of static electricity as much as possible, and quickly dissipate it when it occurs. Environmental control must be adequate. When it is dry, a humidifier should be used. This is recommended to avoid using insulators that can easily build up static electricity.

Semiconductor devices must be stored and transported in an anti-static container, static shielding bag or conductive material. All test and measurement tools including work benches and floors must be grounded. The operator must also be grounded using a wrist strap. Semiconductor devices must not be touched with bare hands. Similar precautions must be taken for printed circuit boards with mounted semiconductor devices.

2. Processing at power-on

The state of the product is undefined at the time when power is supplied. The states of internal circuits in the LSI are indeterminate and the states of register settings and pins are undefined at the time when power is supplied. In a finished product where the reset signal is applied to the external reset pin, the states of pins are not guaranteed from the time when power is supplied until the reset process is completed. In a similar way, the states of pins in a product that is reset by an on-chip power-on reset function are not guaranteed from the time when power is supplied until the power reaches the level at which resetting is specified.

3. Input of signal during power-off state

Do not input signals or an I/O pull-up power supply while the device is powered off. The current injection that results from input of such a signal or I/O pull-up power supply may cause malfunction and the abnormal current that passes in the device at this time may cause degradation of internal elements. Follow the guideline for input signal during power-off state as described in your product documentation.

4. Handling of unused pins

Handle unused pins in accordance with the directions given under handling of unused pins in the manual. The input pins of CMOS products are generally in the high-impedance state. In operation with an unused pin in the open-circuit state, extra electromagnetic noise is induced in the vicinity of the LSI, an associated shoot-through current flows internally, and malfunctions occur due to the false recognition of the pin state as an input signal become possible.

5. Clock signals

After applying a reset, only release the reset line after the operating clock signal becomes stable. When switching the clock signal during program execution, wait until the target clock signal is stabilized. When the clock signal is generated with an external resonator or from an external oscillator during a reset, ensure that the reset line is only released after full stabilization of the clock signal. Additionally, when switching to a clock signal produced with an external resonator or by an external oscillator while program execution is in progress, wait until the target clock signal is stable.

6. Voltage application waveform at input pin

Waveform distortion due to input noise or a reflected wave may cause malfunction. If the input of the CMOS device stays in the area between V_{IL} (Max.) and V_{IH} (Min.) due to noise, for example, the device may malfunction. Take care to prevent chattering noise from entering the device when the input level is fixed, and also in the transition period when the input level passes through the area between V_{IL} (Max.) and V_{IH} (Min.).

7. Prohibition of access to reserved addresses

Access to reserved addresses is prohibited. The reserved addresses are provided for possible future expansion of functions. Do not access these addresses as the correct operation of the LSI is not guaranteed.

8. Differences between products

Before changing from one product to another, for example to a product with a different part number, confirm that the change will not lead to problems. The characteristics of a microprocessing unit or microcontroller unit products in the same group but having a different part number might differ in terms of internal memory capacity, layout pattern, and other factors, which can affect the ranges of electrical characteristics, such as characteristic values, operating margins, immunity to noise, and amount of radiated noise. When changing to a product with a different part number, implement a system-evaluation test for the given product.

Notice

1. Descriptions of circuits, software and other related information in this document are provided only to illustrate the operation of semiconductor products and application examples. You are fully responsible for the incorporation or any other use of the circuits, software, and information in the design of your product or system. Renesas Electronics disclaims any and all liability for any losses and damages incurred by you or third parties arising from the use of these circuits, software, or information.
2. Renesas Electronics hereby expressly disclaims any warranties against and liability for infringement or any other claims involving patents, copyrights, or other intellectual property rights of third parties, by or arising from the use of Renesas Electronics products or technical information described in this document, including but not limited to, the product data, drawings, charts, programs, algorithms, and application examples.
3. No license, express, implied or otherwise, is granted hereby under any patents, copyrights or other intellectual property rights of Renesas Electronics or others.
4. You shall be responsible for determining what licenses are required from any third parties, and obtaining such licenses for the lawful import, export, manufacture, sales, utilization, distribution or other disposal of any products incorporating Renesas Electronics products, if required.
5. You shall not alter, modify, copy, or reverse engineer any Renesas Electronics product, whether in whole or in part. Renesas Electronics disclaims any and all liability for any losses or damages incurred by you or third parties arising from such alteration, modification, copying or reverse engineering.
6. Renesas Electronics products are classified according to the following two quality grades: "Standard" and "High Quality". The intended applications for each Renesas Electronics product depends on the product's quality grade, as indicated below.
 - "Standard": Computers; office equipment; communications equipment; test and measurement equipment; audio and visual equipment; home electronic appliances; machine tools; personal electronic equipment; industrial robots; etc.
 - "High Quality": Transportation equipment (automobiles, trains, ships, etc.); traffic control (traffic lights); large-scale communication equipment; key financial terminal systems; safety control equipment; etc.Unless expressly designated as a high reliability product or a product for harsh environments in a Renesas Electronics data sheet or other Renesas Electronics document, Renesas Electronics products are not intended or authorized for use in products or systems that may pose a direct threat to human life or bodily injury (artificial life support devices or systems; surgical implantations; etc.), or may cause serious property damage (space system; undersea repeaters; nuclear power control systems; aircraft control systems; key plant systems; military equipment; etc.). Renesas Electronics disclaims any and all liability for any damages or losses incurred by you or any third parties arising from the use of any Renesas Electronics product that is inconsistent with any Renesas Electronics data sheet, user's manual or other Renesas Electronics document.
7. No semiconductor product is absolutely secure. Notwithstanding any security measures or features that may be implemented in Renesas Electronics hardware or software products, Renesas Electronics shall have absolutely no liability arising out of any vulnerability or security breach, including but not limited to any unauthorized access to or use of a Renesas Electronics product or a system that uses a Renesas Electronics product. RENESAS ELECTRONICS DOES NOT WARRANT OR GUARANTEE THAT RENESAS ELECTRONICS PRODUCTS, OR ANY SYSTEMS CREATED USING RENESAS ELECTRONICS PRODUCTS WILL BE INVULNERABLE OR FREE FROM CORRUPTION, ATTACK, VIRUSES, INTERFERENCE, HACKING, DATA LOSS OR THEFT, OR OTHER SECURITY INTRUSION ("Vulnerability Issues"). RENESAS ELECTRONICS DISCLAIMS ANY AND ALL RESPONSIBILITY OR LIABILITY ARISING FROM OR RELATED TO ANY VULNERABILITY ISSUES. FURTHERMORE, TO THE EXTENT PERMITTED BY APPLICABLE LAW, RENESAS ELECTRONICS DISCLAIMS ANY AND ALL WARRANTIES, EXPRESS OR IMPLIED, WITH RESPECT TO THIS DOCUMENT AND ANY RELATED OR ACCOMPANYING SOFTWARE OR HARDWARE, INCLUDING BUT NOT LIMITED TO THE IMPLIED WARRANTIES OF MERCHANTABILITY, OR FITNESS FOR A PARTICULAR PURPOSE.
8. When using Renesas Electronics products, refer to the latest product information (data sheets, user's manuals, application notes, "General Notes for Handling and Using Semiconductor Devices" in the reliability handbook, etc.), and ensure that usage conditions are within the ranges specified by Renesas Electronics with respect to maximum ratings, operating power supply voltage range, heat dissipation characteristics, installation, etc. Renesas Electronics disclaims any and all liability for any malfunctions, failure or accident arising out of the use of Renesas Electronics products outside of such specified ranges.
9. Although Renesas Electronics endeavors to improve the quality and reliability of Renesas Electronics products, semiconductor products have specific characteristics, such as the occurrence of failure at a certain rate and malfunctions under certain use conditions. Unless designated as a high reliability product or a product for harsh environments in a Renesas Electronics data sheet or other Renesas Electronics document, Renesas Electronics products are not subject to radiation resistance design. You are responsible for implementing safety measures to guard against the possibility of bodily injury, injury or damage caused by fire, and/or danger to the public in the event of a failure or malfunction of Renesas Electronics products, such as safety design for hardware and software, including but not limited to redundancy, fire control and malfunction prevention, appropriate treatment for aging degradation or any other appropriate measures. Because the evaluation of microcomputer software alone is very difficult and impractical, you are responsible for evaluating the safety of the final products or systems manufactured by you.
10. Please contact a Renesas Electronics sales office for details as to environmental matters such as the environmental compatibility of each Renesas Electronics product. You are responsible for carefully and sufficiently investigating applicable laws and regulations that regulate the inclusion or use of controlled substances, including without limitation, the EU RoHS Directive, and using Renesas Electronics products in compliance with all these applicable laws and regulations. Renesas Electronics disclaims any and all liability for damages or losses occurring as a result of your noncompliance with applicable laws and regulations.
11. Renesas Electronics products and technologies shall not be used for or incorporated into any products or systems whose manufacture, use, or sale is prohibited under any applicable domestic or foreign laws or regulations. You shall comply with any applicable export control laws and regulations promulgated and administered by the governments of any countries asserting jurisdiction over the parties or transactions.
12. It is the responsibility of the buyer or distributor of Renesas Electronics products, or any other party who distributes, disposes of, or otherwise sells or transfers the product to a third party, to notify such third party in advance of the contents and conditions set forth in this document.
13. This document shall not be reprinted, reproduced or duplicated in any form, in whole or in part, without prior written consent of Renesas Electronics.
14. Please contact a Renesas Electronics sales office if you have any questions regarding the information contained in this document or Renesas Electronics products.

(Note1) "Renesas Electronics" as used in this document means Renesas Electronics Corporation and also includes its directly or indirectly controlled subsidiaries.

(Note2) "Renesas Electronics product(s)" means any product developed or manufactured by or for Renesas Electronics.

(Rev.5.0-1 October 2020)

Corporate Headquarters

TOYOSU FORESIA, 3-2-24 Toyosu,
Koto-ku, Tokyo 135-0061, Japan
www.renesas.com

Trademarks

Renesas and the Renesas logo are trademarks of Renesas Electronics Corporation. All trademarks and registered trademarks are the property of their respective owners.

Contact information

For further information on a product, technology, the most up-to-date version of a document, or your nearest sales office, please visit:
www.renesas.com/contact/.