

RA8T2 Group

MCB-RA8T2 User's Manual

Renesas RA Family RA8 Series

All information contained in these materials, including products and product specifications, represents information on the product at the time of publication and is subject to change by Renesas Electronics Corp. without notice. Please review the latest information published by Renesas Electronics Corp. through various means, including the Renesas Electronics Corp. website (<http://www.renesas.com>).

Notice

1. Descriptions of circuits, software and other related information in this document are provided only to illustrate the operation of semiconductor products and application examples. You are fully responsible for the incorporation or any other use of the circuits, software, and information in the design of your product or system. Renesas Electronics disclaims any and all liability for any losses and damages incurred by you or third parties arising from the use of these circuits, software, or information.
2. Renesas Electronics hereby expressly disclaims any warranties against and liability for infringement or any other claims involving patents, copyrights, or other intellectual property rights of third parties, by or arising from the use of Renesas Electronics products or technical information described in this document, including but not limited to, the product data, drawings, charts, programs, algorithms, and application examples.
3. No license, express, implied or otherwise, is granted hereby under any patents, copyrights or other intellectual property rights of Renesas Electronics or others.
4. You shall be responsible for determining what licenses are required from any third parties, and obtaining such licenses for the lawful import, export, manufacture, sales, utilization, distribution or other disposal of any products incorporating Renesas Electronics products, if required.
5. You shall not alter, modify, copy, or reverse engineer any Renesas Electronics product, whether in whole or in part. Renesas Electronics disclaims any and all liability for any losses or damages incurred by you or third parties arising from such alteration, modification, copying or reverse engineering.
6. Renesas Electronics products are classified according to the following two quality grades: "Standard" and "High Quality". The intended applications for each Renesas Electronics product depends on the product's quality grade, as indicated below.

"Standard": Computers; office equipment; communications equipment; test and measurement equipment; audio and visual equipment; home electronic appliances; machine tools; personal electronic equipment; industrial robots; etc.

"High Quality": Transportation equipment (automobiles, trains, ships, etc.); traffic control (traffic lights); large-scale communication equipment; key financial terminal systems; safety control equipment; etc.

Unless expressly designated as a high reliability product or a product for harsh environments in a Renesas Electronics data sheet or other Renesas Electronics document, Renesas Electronics products are not intended or authorized for use in products or systems that may pose a direct threat to human life or bodily injury (artificial life support devices or systems; surgical implantations; etc.), or may cause serious property damage (space system; undersea repeaters; nuclear power control systems; aircraft control systems; key plant systems; military equipment; etc.). Renesas Electronics disclaims any and all liability for any damages or losses incurred by you or any third parties arising from the use of any Renesas Electronics product that is inconsistent with any Renesas Electronics data sheet, user's manual or other Renesas Electronics document.

7. No semiconductor product is absolutely secure. Notwithstanding any security measures or features that may be implemented in Renesas Electronics hardware or software products, Renesas Electronics shall have absolutely no liability arising out of any vulnerability or security breach, including but not limited to any unauthorized access to or use of a Renesas Electronics product or a system that uses a Renesas Electronics product. RENESAS ELECTRONICS DOES NOT WARRANT OR GUARANTEE THAT RENESAS ELECTRONICS PRODUCTS, OR ANY SYSTEMS CREATED USING RENESAS ELECTRONICS PRODUCTS WILL BE INVULNERABLE OR FREE FROM CORRUPTION, ATTACK, VIRUSES, INTERFERENCE, HACKING, DATA LOSS OR THEFT, OR OTHER SECURITY INTRUSION ("Vulnerability Issues"). RENESAS ELECTRONICS DISCLAIMS ANY AND ALL RESPONSIBILITY OR LIABILITY ARISING FROM OR RELATED TO ANY VULNERABILITY ISSUES. FURTHERMORE, TO THE EXTENT PERMITTED BY APPLICABLE LAW, RENESAS ELECTRONICS DISCLAIMS ANY AND ALL WARRANTIES, EXPRESS OR IMPLIED, WITH RESPECT TO THIS DOCUMENT AND ANY RELATED OR ACCOMPANYING SOFTWARE OR HARDWARE, INCLUDING BUT NOT LIMITED TO THE IMPLIED WARRANTIES OF MERCHANTABILITY, OR FITNESS FOR A PARTICULAR PURPOSE.
8. When using Renesas Electronics products, refer to the latest product information (data sheets, user's manuals, application notes, "General Notes for Handling and Using Semiconductor Devices" in the reliability handbook, etc.), and ensure that usage conditions are within the ranges specified by Renesas Electronics with respect to maximum ratings, operating power supply voltage range, heat dissipation characteristics, installation, etc. Renesas Electronics disclaims any and all liability for any malfunctions, failure or accident arising out of the use of Renesas Electronics products outside of such specified ranges.
9. Although Renesas Electronics endeavors to improve the quality and reliability of Renesas Electronics products, semiconductor products have specific characteristics, such as the occurrence of failure at a certain rate and malfunctions under certain use conditions. Unless designated as a high reliability product or a product for harsh environments in a Renesas Electronics data sheet or other Renesas Electronics document, Renesas Electronics products are not subject to radiation resistance design. You are responsible for implementing safety measures to guard against the possibility of bodily injury, injury or damage caused by fire, and/or danger to the public in the event of a failure or malfunction of Renesas Electronics products, such as safety design for hardware and software, including but not limited to redundancy, fire control and malfunction prevention, appropriate treatment for aging degradation or any other appropriate measures. Because the evaluation of microcomputer software alone is very difficult and impractical, you are responsible for evaluating the safety of the final products or systems manufactured by you.
10. Please contact a Renesas Electronics sales office for details as to environmental matters such as the environmental compatibility of each Renesas Electronics product. You are responsible for carefully and sufficiently investigating applicable laws and regulations that regulate the inclusion or use of controlled substances, including without limitation, the EU RoHS Directive, and using Renesas Electronics products in compliance with all these applicable laws and regulations. Renesas Electronics disclaims any and all liability for damages or losses occurring as a result of your noncompliance with applicable laws and regulations.
11. Renesas Electronics products and technologies shall not be used for or incorporated into any products or systems whose manufacture, use, or sale is prohibited under any applicable domestic or foreign laws or regulations. You shall comply with any applicable export control laws and regulations promulgated and administered by the governments of any countries asserting jurisdiction over the parties or transactions.
12. It is the responsibility of the buyer or distributor of Renesas Electronics products, or any other party who distributes, disposes of, or otherwise sells or transfers the product to a third party, to notify such third party in advance of the contents and conditions set forth in this document.
13. This document shall not be reprinted, reproduced or duplicated in any form, in whole or in part, without prior written consent of Renesas Electronics.
14. Please contact a Renesas Electronics sales office if you have any questions regarding the information contained in this document or Renesas Electronics products.

(Note1) "Renesas Electronics" as used in this document means Renesas Electronics Corporation and also includes its directly or indirectly controlled subsidiaries.

(Note2) "Renesas Electronics product(s)" means any product developed or manufactured by or for Renesas Electronics.

(Rev.5.0-1 October 2020)

Corporate Headquarters

TOYOSU FORESIA, 3-2-24 Toyosu,
Koto-ku, Tokyo 135-0061, Japan
www.renesas.com

Trademarks

Renesas and the Renesas logo are trademarks of Renesas Electronics Corporation. All trademarks and registered trademarks are the property of their respective owners.

Contact information

For further information on a product, technology, the most up-to-date version of a document, or your nearest sales office, please visit:

www.renesas.com/contact/.

General Precautions in the Handling of Microprocessing Unit and Microcontroller Unit Products

The following usage notes are applicable to all Microprocessing unit and Microcontroller unit products from Renesas. For detailed usage notes on the products covered by this document, refer to the relevant sections of the document as well as any technical updates that have been issued for the products.

1. Precaution against Electrostatic Discharge (ESD)

A strong electrical field, when exposed to a CMOS device, can cause destruction of the gate oxide and ultimately degrade the device operation. Steps must be taken to stop the generation of static electricity as much as possible, and quickly dissipate it when it occurs. Environmental control must be adequate. When it is dry, a humidifier should be used. This is recommended to avoid using insulators that can easily build up static electricity.

Semiconductor devices must be stored and transported in an anti-static container, static shielding bag or conductive material. All test and measurement tools including work benches and floors must be grounded. The operator must also be grounded using a wrist strap. Semiconductor devices must not be touched with bare hands. Similar precautions must be taken for printed circuit boards with mounted semiconductor devices.

2. Processing at power-on

The state of the product is undefined at the time when power is supplied. The states of internal circuits in the LSI are indeterminate and the states of register settings and pins are undefined at the time when power is supplied. In a finished product where the reset signal is applied to the external reset pin, the states of pins are not guaranteed from the time when power is supplied until the reset process is completed. In a similar way, the states of pins in a product that is reset by an on-chip power-on reset function are not guaranteed from the time when power is supplied until the power reaches the level at which resetting is specified.

3. Input of signal during power-off state

Do not input signals or an I/O pull-up power supply while the device is powered off. The current injection that results from input of such a signal or I/O pull-up power supply may cause malfunction and the abnormal current that passes in the device at this time may cause degradation of internal elements. Follow the guideline for input signal during power-off state as described in your product documentation.

4. Handling of unused pins

Handle unused pins in accordance with the directions given under handling of unused pins in the manual. The input pins of CMOS products are generally in the high-impedance state. In operation with an unused pin in the open-circuit state, extra electromagnetic noise is induced in the vicinity of the LSI, an associated shoot-through current flows internally, and malfunctions occur due to the false recognition of the pin state as an input signal become possible.

5. Clock signals

After applying a reset, only release the reset line after the operating clock signal becomes stable. When switching the clock signal during program execution, wait until the target clock signal is stabilized. When the clock signal is generated with an external resonator or from an external oscillator during a reset, ensure that the reset line is only released after full stabilization of the clock signal. Additionally, when switching to a clock signal produced with an external resonator or by an external oscillator while program execution is in progress, wait until the target clock signal is stable.

6. Voltage application waveform at input pin

Waveform distortion due to input noise or a reflected wave may cause malfunction. If the input of the CMOS device stays in the area between V_{IL} (Max.) and V_{IH} (Min.) due to noise, for example, the device may malfunction. Take care to prevent chattering noise from entering the device when the input level is fixed, and also in the transition period when the input level passes through the area between V_{IL} (Max.) and V_{IH} (Min.).

7. Prohibition of access to reserved addresses

Access to reserved addresses is prohibited. The reserved addresses are provided for possible future expansion of functions. Do not access these addresses as the correct operation of the LSI is not guaranteed.

8. Differences between products

Before changing from one product to another, for example to a product with a different part number, confirm that the change will not lead to problems. The characteristics of a microprocessing unit or microcontroller unit products in the same group but having a different part number might differ in terms of internal memory capacity, layout pattern, and other factors, which can affect the ranges of electrical characteristics, such as characteristic values, operating margins, immunity to noise, and amount of radiated noise. When changing to a product with a different part number, implement a system-evaluation test for the given product.

Renesas RA Family

MCB-RA8T2 User's Manual**Contents**

1. Overview	3
1.1 Presupposition and precautions of this document.....	3
2. Product Contents	4
3. Product Order Information	4
4. Hardware Configuration and Default Setting	5
4.1 Hardware configuration.....	5
4.2 Block diagram.....	6
4.3 Board Layout	7
4.4 Standoffs and Screws.....	7
4.5 Jumper pin setting	8
4.6 Board Connection	9
5. CPU Board Specification	10
5.1 Functions.....	10
5.1.1 Power supply	10
5.1.2 Onboard debugger	10
5.1.3 J-Link Virtual COM Port.....	10
5.1.4 RA8T2 USB I/F	10
5.1.5 Inverter board connector	11
5.1.6 Serial communication	13
5.1.7 Reset circuit	13
5.1.8 LED	14
5.1.9 CAN Communication.....	14
5.1.10 Pmod	14

5.1.11	RS-485 Communication	15
5.1.12	DSMIF	15
5.1.13	Ether CAT	15
5.1.14	MicroSD	15
5.2	RA8T2 pin function list	16
6.	Design and Manufacture Information	21
7.	Website and Support	21
	Revision History	22

Figure of contents

Figure 2-1	Product contents	4
Figure 4-1	CPU board block diagram	6
Figure 4-2	CPU board layout	7
Figure 4-3	Standoffs and Screws assembly	7
Figure 4-4	Default jumper pin setting of CPU board	8
Figure 4-5	Board connection example	9
Figure 5-1	Jumper setting of JP3	10
Figure 5-2	Connection for CPU board and inverter board	13

Table of contents

Table 4-1	CPU board specification	5
Table 4-2	Jumper pin setting of CPU board	8
Table 5-1	1st Inverter board connector (CN1) pin assignment	11
Table 5-2	1st Inverter board connector (CN2) pin assignment	11
Table 5-3	2nd Inverter board connector (CN3) pin assignment	12
Table 5-4	2nd Inverter board connector (CN4) pin assignment	12
Table 5-5	SCI connector (CN9) pin assignment	13
Table 5-6	LED pin assignment	14
Table 5-7	CAN communication pin assignment (CN8)	14
Table 5-8	Pmod Type 2A connector pin assignment (CN5)	14
Table 5-9	Pmod Type 3A/6A connector pin assignment (CN6)	15
Table 5-10	RS-485 connector pin assignment (CN19)	15
Table 5-11	DSMIF through holes pin assignment (CN7)	15
Table 5-12	RA8T2 pin function list	16

1. Overview

MCB-RA8T2 is a CPU board for motor control evaluation. By using this product in combination with an inverter board, motor control using RA8T2 can be easily performed.

1.1 Presupposition and precautions of this document

1. Experience of using tools: This document assumes that the user has used terminal emulation program of Integrated Development Environment (IDE) such as e² studio before.
2. Knowledge about the development subject: This document assumes that the user has a basic knowledge to modify the sample project regarding MCU and embedded system.
3. Before using this product, wear an antistatic wrist strap. If you touch this product with static charge on your body, a device failure may occur, or operation may become unstable
4. All screen shots provided in this document is for reference. Actual screen displays may differ depending on the software and development tool version which you use.

2. Product Contents

This kit consists of the following parts.

1. CPU Board (RTK0EMA6L0C00000BJ) x1
2. USB Cable x1
3. Screw x4
4. Standoff x4



(1)CPU board



(2)USB cable



(3)screw
(4)stand-off

Figure 2-1 Product contents

3. Product Order Information


Product number to order MCB-RA8T2 : RTK0EMA6L0C00000BJ

4. Hardware Configuration and Default Setting

4.1 Hardware configuration

The specifications of the CPU board are shown below.

Table 4-1 CPU board specification

item		Specification
Product name		CPU Board
Board part No.		RTK0EMA6L0C00000BJ
Compatible inverter board		RTK0EM0000B12020BJ
External view		 <p>Note: The actual product may differ from this photo.</p>
Mounted MCU	Product group	RA8T2 group
	Product No.	R7KA8T2LFLCAC *1
	CPU maximum operating frequency	1GHz
	Bit count	32 bit
	Package / Pin count	BGA / 289 pin
	MRAM / SRAM	1MB / 2MB
MCU input clock		24MHz (Generate with external crystal oscillator)
Power supply		DC 5V Select one way automatically from the below <ul style="list-style-type: none"> • Power is supplied from compatible inverter board • Power is supplied from USB connector
Debugger		J-Link On-Board (Onboard debugger circuit)
Connector		<ul style="list-style-type: none"> • Inverter board connector (2 pair) • USB connector for J-Link On-Board • USB connector for RA8T2 • SCI connector for Renesas Motor Workbench communication • Through hole for CAN communication • 20 pin through hole for Arm debugger • Pmod connectors (Type2A + Type3A/6A) • Ether CAT connector • MicroSD slot • DSMIF
Switch		MCU reset switch
LED		User-controllable LED x6, Power LED x1, Ether CAT LEDx8
Board size		109 mm (W) x 109 mm (L)
Operating temperature		Room temperature
Operating humidity		No condensation allowed
EMC Directive		EN61326-1:2021 EMI : Class A EMS : Industrial Electromagnetic environment

*1 Products with serial numbers "25xxxxx" are equipped with RA8T2 chip version A. Please refer to the user's manual of RA8T2 for the restriction of chip version A

4.2 Block diagram

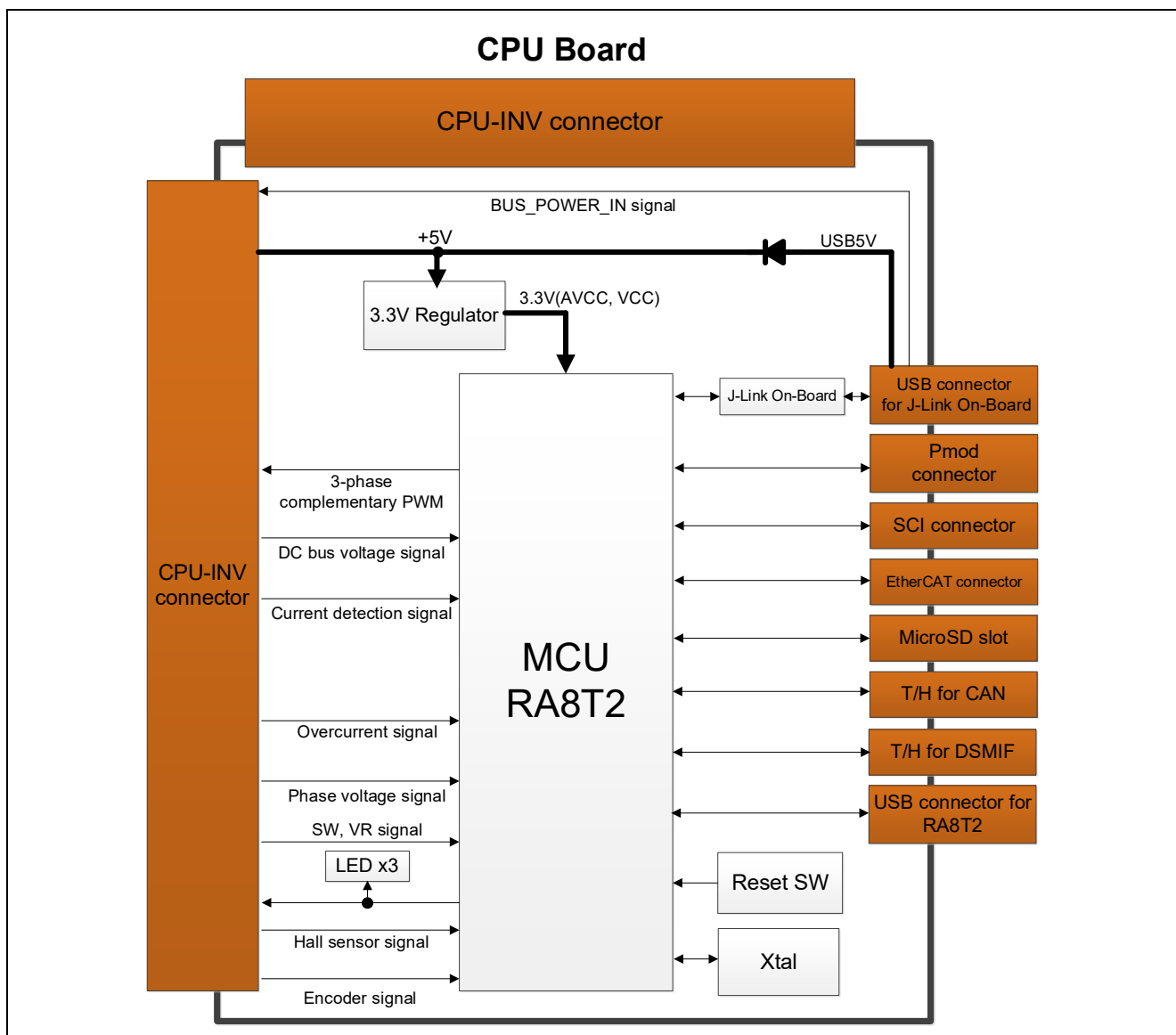


Figure 4-1 CPU board block diagram

4.3 Board Layout

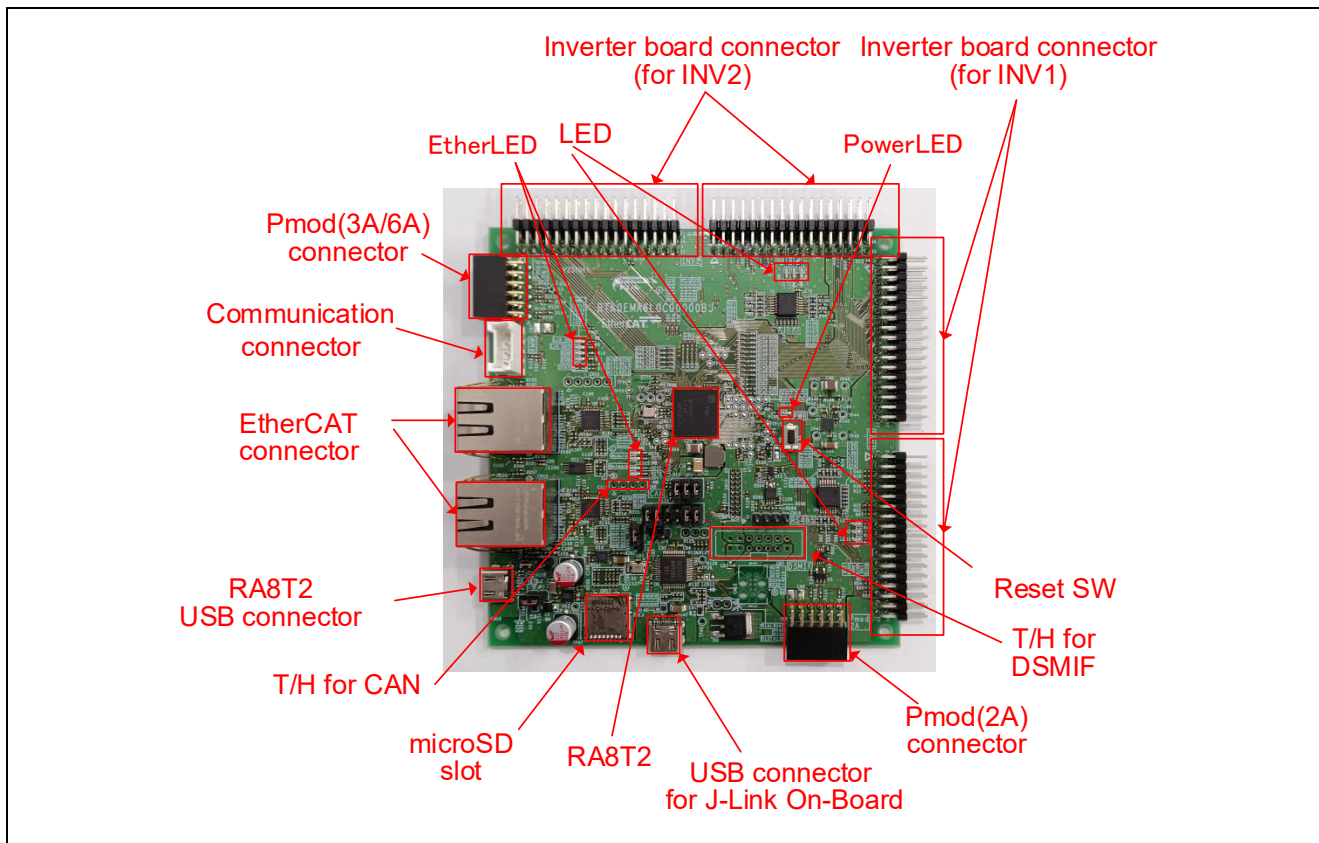


Figure 4-2 CPU board layout

4.4 Standoffs and Screws

Before using this product, assemble the included standoffs and screws as shown below.

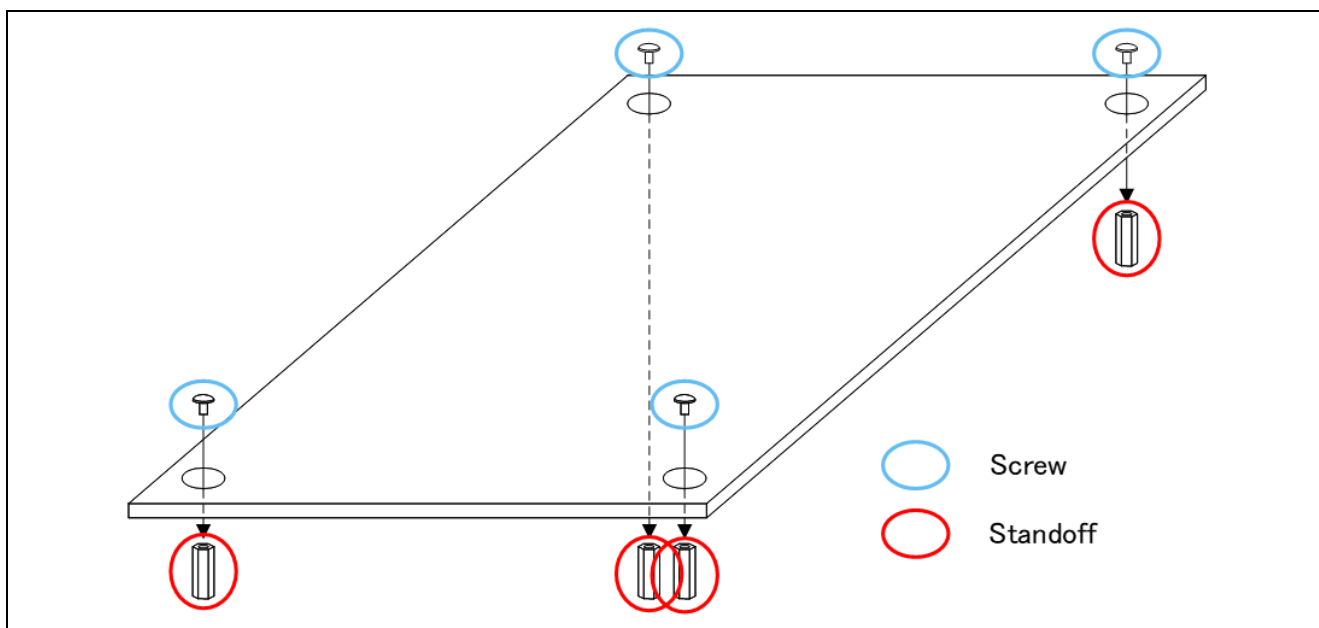


Figure 4-3 Standoffs and Screws assembly

4.5 Jumper pin setting

Default settings and functions of the jumper pins (JP1~JP7) are as follows.

Table 4-2 Jumper pin setting of CPU board

JP No.	Function	Setting (function in use)			Default setting
		open	1-2 short	2-3 short	
JP1	Ether CAT ID setting	bit = HIGH(*1)	bit = LOW	-	1-2,3-4,5-6 short
JP2	On-board Debugger connection	Disconnected	Connected	-	1-2,3-4,9-10,11-12 short
JP3	On-board Debugger setting	Enabled	Disabled	-	open
JP4	RA8T2 operating mode	Single chip	Single-chip /SCI boot	RA8T2 RESET	1-2 short
JP5	Jumper to bypass D3	Via D3	Bypass	-	not mounted(open)
JP6	USB_VBUS signal	(prohibited)	LOW	USBFS_VBUS	1-2 short
JP7	USB +5V power select	From CN13	From CN18	-	open

(*1) use pull-up resistor

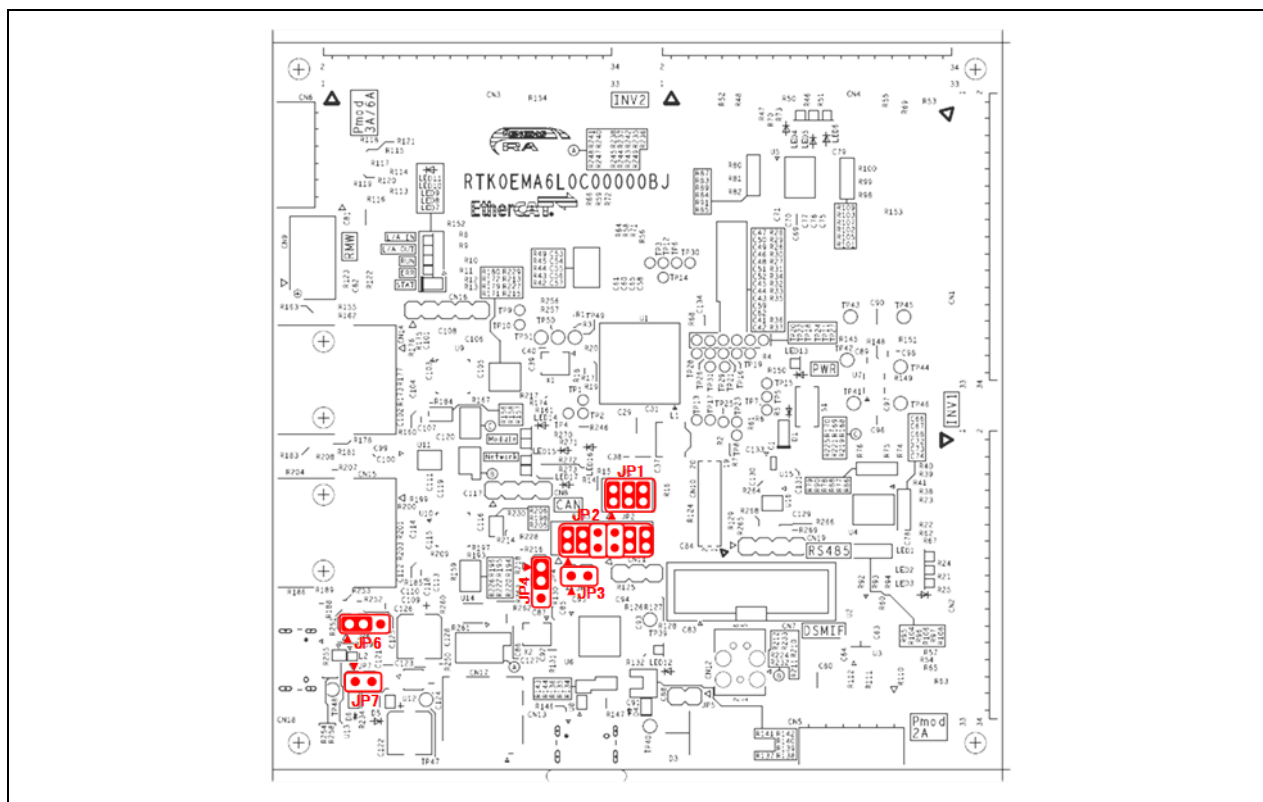


Figure 4-4 Default jumper pin setting of CPU board

4.6 Board Connection

Figure 4-5 show connection examples when using this product with the inverter board kit (product name: MCI-LV-1, model name: RTK0EM0000S04020BJ) and the communication board (product name: MC-COM, model name: RTK0EMXC90S00000BJ).

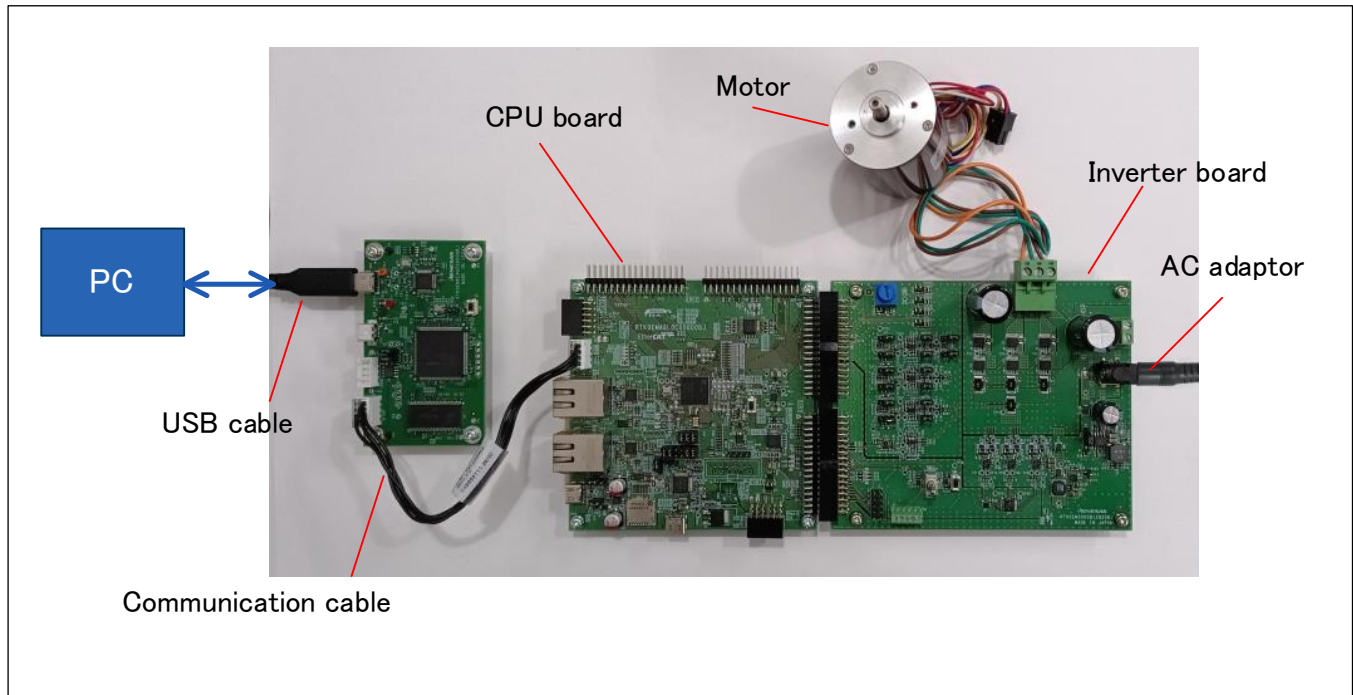


Figure 4-5 Board connection example

5. CPU Board Specification

This section describes the specification of the CPU Board.

5.1 Functions

5.1.1 Power supply

When not connected to the inverter board, power should be supplied from the USB connector (CN13). When connecting to the inverter board, power supply from the USB connector or from the inverter board will be automatically selected. USB power supply has priority.

5.1.2 Onboard debugger

This product has the onboard debugger circuit, J-Link On-Board (hereinafter called "J-Link-OB"). You can write a program (firmware) of RA8T2 with it. When you write a program, open the JP3 and connect the USB connector (CN13) on CPU board to PC with USB cable. J-Link-OB operates as debugger equivalent to J-Link. If connecting from Integrated Development Environment (e.g. e² studio) or flash programming tool (e.g. J-Flash Lite by SEGGER), set the type of debugger (tool) to "J-Link".

JP3

Open : onboard debugger valid
Short : onboard debugger invalid



Figure 5-1 Jumper setting of JP3

5.1.3 J-Link Virtual COM Port

This product supports J-Link Virtual COM Port. By connecting to a PC with USB connector (CN13), a virtual COM port via USB is available.

5.1.4 RA8T2 USB I/F

This product has a USB connector (CN18) for the USB Full-Speed module in RA8T2.

5.1.5 Inverter board connector

Two inverter boards can be connected to this board. The 1st inverter board is connected with CN1 and CN2, and the 2nd inverter board is connected with CN3 and CN4. The pin assignments of the connectors are shown in Table 5-1, Table 5-2, Table 5-3, Table 5-4. Note that these tables show default connection setting for the ports with jumper switches.

Table 5-1 1st Inverter board connector (CN1) pin assignment

Pin No.	Pin Function	RA8T2 Pin	Pin No.	Pin Function	RA8T2 Pin
1	HVtemp	P005/AN005(*)	2	AGND	- (AVSS)
3	VDC	P007/AN007	4	AGND	- (AVSS)
5	IU	P006/AN006	6	NC	-
7	IV	P008/AN008	8	NC	-
9	IW	P010/AN010	10	NC	-
11	VU	P009/AN009	12	VV	P011/AN011
13	VW	P013/AN013	14	AGND	- (AVSS)
15	VPFC	P012/AN012	16	IPFC1	P812/AN022
17	VR/IPFC2	P015/AN015	18	AGND	- (AVSS)
19	AVCC	- (AVCC)	20	AVCC	- (AVCC)
21	AGND	- (AVSS)	22	AGND	- (AVSS)
23	VCC	- (VCC)	24	VCC	- (VCC)
25	GND	- (VSS)	26	GND	- (VSS)
27	UN	P604/GTIOC8B	28	GND	- (VSS)
29	UP	P605/GTIOC8A	30	GND	- (VSS)
31	VN	P602/GTIOC7B	32	GND	- (VSS)
33	VP	P603/GTIOC7A	34	GND	- (VSS)

(*) Exclusively assigned by jumper resistor setting

Table 5-2 1st Inverter board connector (CN2) pin assignment

Pin No.	Pin Function	RA8T2 Pin	Pin No.	Pin Function	RA8T2 Pin
1	WN	P613/GTIOC9B	2	GND	- (VSS)
3	WP	P612/GTIOC9A	4	GND	- (VSS)
5	DRV_SCK	P610/RSPCKA	6	DRV_RXD PWMPFC2	P115/MOSIA GTIOC5A
7	DRV_TXD	P609/MISOA	8	DRV_CS	P114/SSLA0
9	BUS_POWER_IN	-	10	INV_CONNECTED	P504
11	SAFE_LOCK	P503	12	OC#	P112/GTETRGA (*)
13	nFault	P112/GTETRGA (*)	14	DRV_EN PWMPFC1	P300 GTIOC3A
15	Relay	P505	16	SW1	PA00
17	SW2	PA07	18	LED1	P614
19	LED2	PA15	20	LED3	PA04
21	HALL_U	PA08/IRQ6	22	HALL_V	PA10/IRQ4
23	HALL_W	PA09/IRQ5	24	SIO_SDA	P514/SDA2
25	SCK_SCL	P515/SCL2	26	CSNIRQN/ENC_Z	P615/GTETRGC
27	IPS_A ENC_A	P501/AN020 (*) P507/GTIOC0A (*)	28	IPS_A#	P014/AN014
29	IPS_B ENC_B	P502/AN019 (*) P508/GTIOC0B (*)	30	IPS_B#	P500/AN021
31	GND	- (VSS)	32	GND	- (VSS)
33	+5V	-	34	+5V	-

(*) Exclusively assigned by jumper resistor setting

Table 5-3 2nd Inverter board connector (CN3) pin assignment

Pin No.	Pin Function	RA8T2 Pin	Pin No.	Pin Function	RA8T2 Pin
1	NC	-	2	AGND	- (AVSS)
3	VDC	P806/AN018	4	AGND	- (AVSS)
5	IU	P002/AN002	6	NC	-
7	IV	P000/AN000	8	NC	-
9	IW	P004/AN004	10	NC	-
11	VU	P001/AN001 (*)	12	VV	P513/AN016 (*)
13	VW	P003/AN003 (*)	14	AGND	- (AVSS)
15	NC	-	16	NC	-
17	VR	P805/AN017	18	AGND	- (AVSS)
19	AVCC	- (AVCC)	20	AVCC	- (AVCC)
21	AGND	- (AVSS)	22	AGND	- (AVSS)
23	VCC	- (VCC)	24	VCC	- (VCC)
25	GND	- (VSS)	26	GND	- (VSS)
27	UN	P202/GTIOC5B	28	GND	- (VSS)
29	UP	P203/GTIOC5A	30	GND	- (VSS)
31	VN	P600/GTIOC6B	32	GND	- (VSS)
33	VP	P601/GTIOC6A	34	GND	- (VSS)

(*) Exclusively assigned by jumper resistor setting

Table 5-4 2nd Inverter board connector (CN4) pin assignment

Pin No.	Pin Function	RA8T2Pin	Pin No.	Pin Function	RA8T2 Pin
1	WN	P204/GTIOC4B	2	GND	- (VSS)
3	WP	P205/GTIOC4A	4	GND	- (VSS)
5	DRV_SCK	P610/RSPCKA	6	DRV_RXD	P115/MOSIA
7	DRV_TXD	P609/MISOA	8	DRV_CS	P315/SSLA3
9	BUS_POWER_IN	-	10	INV_CONNECTED	P100
11	SAFE_LOCK	P800	12	OC#	P101/GTETRGB (*)
13	nFault	P101/GTETRGB (*)	14	DRV_EN	P808
15	Relay	P809	16	SW1	P901
17	SW2	P313	18	LED1	P900
19	LED2	P509	20	LED3	P510
21	HALL_U	P314/IRQ28	22	HALL_V	P802/IRQ18
23	HALL_W	P803/IRQ19	24	SIO_SDA	P514/SDA2
25	SCK_SCL	P515/SCL2	26	CSNIRQN/ENC_Z	P804/GTETRGD
27	IPS_A ENC_A	P001/AN001 (*) P103/GTIOC2A (*)	28	IPS_A#	P513/AN016 (*)
29	IPS_B ENC_B	P003/AN003 (*) P102/GTIOC2B (*)	30	IPS_B#	P005/AN005 (*)
31	GND	- (VSS)	32	GND	- (VSS)
33	+5V	-	34	+5V	-

(*) Exclusively assigned by jumper resistor setting

The connection for CPU board and inverter board is shown in Figure 5-2.

(1) CPU board + INV board
(connected with CN1, CN2)



(2) CPU board + INV board
(Connected with CN3, CN4)



(3) CPU board + INV board x2



Figure 5-2 Connection for CPU board and inverter board

5.1.6 Serial communication

For serial communication using Renesas Motor Workbench, the CPU board has SCI connector. Pin assignment for SCI connector is listed in Table 5-5.

Table 5-5 SCI connector (CN9) pin assignment

Pin No.	Pin Function	RA8T2 Pin
1	GND	-
2	MCU RXD	P401/RXD1
3	MCU TXD	P400/TXD1
4	VCC	-

5.1.7 Reset circuit

This product has a reset circuit to enable power-on reset or external reset on MCU. Push the reset switch (S1) to externally reset MCU.

5.1.8 LED

This product has 6 controllable LEDs, so that they can be used for program debug and the system. LED switches "ON" when output from the corresponding port is "LOW" and switches "OFF" when output is "HIGH". Pin assignment for corresponding LEDs is listed in Table 5-6.

Table 5-6 LED pin assignment

RA8T2 Pin		LED1	LED2	LED3	LED4	LED5	LED6
P614	Output HIGH	OFF	-	-	-	-	-
	Output LOW	ON	-	-	-	-	-
PA15	Output HIGH	-	OFF	-	-	-	-
	Output LOW	-	ON	-	-	-	-
PA04	Output HIGH	-	-	OFF	-	-	-
	Output LOW	-	-	ON	-	-	-
P900	Output HIGH	-	-	-	OFF	-	-
	Output LOW	-	-	-	ON	-	-
P509	Output HIGH	-	-	-	-	OFF	-
	Output LOW	-	-	-	-	ON	-
P510	Output HIGH	-	-	-	-	-	OFF
	Output LOW	-	-	-	-	-	ON

5.1.9 CAN Communication

This product has through holes for CAN communication. Note that CAN driver is not equipped. Pin assignment for CAN communication connector is listed in Table 5-7.

Table 5-7 CAN communication pin assignment (CN8)

Pin No.	RA8T2 pin
1	VCC
2	PD00/CTX1
3	PC15/CRX1
4	VSS

5.1.10 Pmod

This product has two connectors for Pmod module connection. Pin assignments are shown in Table 5-8 and Table 5-9.

Table 5-8 Pmod Type 2A connector pin assignment (CN5)

Pin No.	RA8T2 Pin	Pin No.	RA8T2 Pin
1	P113_SSIA1	7	P813
2	P115_MOSIA	8	PA06
3	P609_MISOA	9	P611
4	P610_RSPCKA	10	PA11
5	VSS	11	VSS
6	VCC	12	VCC

Table 5-9 Pmod Type 3A/6A connector pin assignment (CN6)

Pin No.	RA8T2 Pin	Pin No.	RA8T2 Pin
1	P710_CTS4(P715_IRQ12)	7	P410
2	P415_TXD4	8	P412
3	P414_RXD4(P515_SCL2)	9	P413
4	P411(P514_SDA2)	10	P512
5	VSS	11	VSS
6	VCC	12	VCC

(*) default setting is Pmod 3A, select 6A with jumper resistor. 3A assignment is in brackets.

5.1.11 RS-485 Communication

This product has a connector for RS-485 communication. The pin assignment of the RS-485 connector is shown in Table 5-10

Table 5-10 RS-485 connector pin assignment (CN19)

Pin No	RA8T2 Pin
1	+5V
2	A/Y
3	B/Z
4	GND

5.1.12 DSMIF

This product has through holes for DSMIF. The pin assignment of the DSMIF through holes is shown in Table 5-11.

Table 5-11 DSMIF through holes pin assignment (CN7)

Pin No	RA8T2 Pin	Pin No	RA8T2 Pin
1	+5V	2	VCC
3	+5V	4	VCC
5	PC10/DSM1CLK2	6	PC13/DSM1DAT2
7	PC11/DSM1CLK1	8	PC14/DSM1DAT1
9	PC12/DSM1CLK0	10	PC08/DSM1DAT0
11	PC04/DSM0CLK0	12	PC07/DSM0DAT0
13	GND	14	GND

5.1.13 Ether CAT

This product has connectors for Ether CAT. When using Ether CAT, connect to the target from CN14 and CN15.

5.1.14 MicroSD

This product has the slot of MicroSD. When using a MicroSD card, insert a MicroSD card into CN17.

5.2 RA8T2 pin function list

Table 5-12 RA8T2 pin function list

Pin Layout	RA8T2 pin function	Signal function
A1	P609/MISOA	Smart Driver (MISO), Pmod2A
A2	P113/SSLA1	Pmod2A
A3	P115/MOSIA/GTIOC5A	Smart Driver (MOSI), HV1_ InterleavePWM_PFC, Pmod2A
A4	P112/GTETRGA	Smart Driver (INV1 nFault), INV1 Over Current, HV1_OC_PFC
A5	P302	-
A6	P915	-
A7	VLO3	VLO
A8	VLO1	VLO
A9	VSS_DCDC1	GND
A10	VCC_DCDC3	VCC
A11	VCC_DCDC1	VCC
A12	P309	Ether CAT(LED_Network1)
A13	P906/CAT1_ERXD0	Ether CAT(CAT1_DUPLEX)
A14	P905/CAT1_RX_CLK	Ether CAT(CAT1_BCAST_OFF)
A15	P907/CAT1_ERXD1	Ether CAT(CAT1_PHYAD2)
A16	P904	Ether CAT(LED_Module2)
A17	P207	Ether CAT(LED_Module1)
B1	P813	Pmod2A(GPIO)
B2	PA12/RXD9	ARM debugger
B3	P114/SSLA0	Smart Driver (INV1 CS)
B4	PA11	Pmod2A(GPIO)
B5	P300/GTIOC3A	Smart Driver (INV1 EN)/ HV1_PWM_PFC
B6	P303	-
B7	VLO4	VLO
B8	VLO2	VLO
B9	VSS_DCDC2	GND
B10	VCC_DCDC4	VCC
B11	VCC_DCDC2	VCC
B12	P311/CAT1_TX_CLK	Ether CAT
B13	P908/CAT1_ERXD2	Ether CAT(CAT1_PHYAD1)
B14	P909/CAT1_ERXD3	Ether CAT(CAT1_PHYAD0)
B15	P206/CAT1_RX_DV	Ether CAT(CAT1_CONFIG2)
B16	PD01/SD0DAT2	SDHI
B17	PD02/SD0DAT1	SDHI
C1	PA06	Pmod2A(GPIO)
C2	P613/GTIOC9B	INV1 PWM_WL
C3	PA13/CTS_RTS9	ARM debugger
C4	P301	-
C5	P200	-
C6	P210/SWDIO	ARM debugger
C7	P208/TDI	ARM debugger
C8	P110	ARM debugger
C9	P308/TRCLK	ARM debugger
C10	P305/TRDATA2/CAT1_ETXD2	ARM debugger, Ether CAT
C11	P307/TRDATA0/CAT1_ETXD0	ARM debugger, Ether CAT
C12	P911	Ether CAT(JPswitch)
C13	P312/CAT1_RX_ER	Ether CAT(CAT1_ISO)
C14	PD04/SD0CMD	SDHI
C15	PD03/SD0DAT0	SDHI
C16	PD05/SD0CLK	SDHI
C17	PD06/SD0WP	SDHI
D1	PA04	INV1 LED3
D2	P611	Pmod2A(GPIO)
D3	P610/RSPCKA	Smart Driver (SCK), Pmod2A
D4	PA14/TXD9	ARM debugger
D5	RES	ARM debugger

Pin Layout	RA8T2 pin function	Signal function
D6	P211/SWCLK	ARM debugger
D7	P109	-
D8	P108	-
D9	P903	-
D10	P304/TRDATA3/CAT1_ETXD3	ARM debugger, Ether CAT
D11	P306/TRDATA1/CAT1_ETXD1	ARM debugger, Ether CAT
D12	P912	Ether CAT(JPswitch)
D13	PB04/CAT0_ETXD3	Ether CAT
D14	PB07	Ether CAT(JPswitch)
D15	PB05/IRQ15	Ether CAT(CAT1_INTRP)
D16	PB03/CAT0_ETXD2	Ether CAT
D17	PB01/CAT0_TX_CLK	Ether CAT
E1	PA15	INV1 LED2
E2	P615/ GTETRGC	INV1 ENC_Z, INV1 IPS CSNIRQN
E3	P614	INV1 LED1
E4	P612/ GTIOC9A	INV1 PWM_WH
E5	P914	-
E6	P201/MD	ARM debugger
E7	P209/TDO	ARM debugger
E8	P111/ SD0DAT3	SDHI
E9	P902	-
E10	P310/CAT1_TX_EN	Ether CAT
E11	P910	-
E12	P913	Ether CAT(LED_Network2)
E13	PB02/ CAT0_ETXD1	Ether CAT
E14	PB06	SDHI
E15	PD07/ SD0CD	SDHI
E16	PB00/ CAT0_ETXD	Ether CAT
E17	P706/ ETHPHYCLK	Ether CAT
F1	PA02/ RXD2	RS485
F2	PA10/ IRQ4	INV1 HALL_V
F3	PA08/ IRQ6	INV1 HALL_U
F4	PA09/ IRQ5	INV1 HALL_W
F5	PC14/ DSM1DAT1	DSMIF
F6	VCC4	VCC
F7	VSS4	GND
F8	VSS21	GND
F9	VCL5	VCL
F10	VSS12	GND
F11	VCC12	VCC
F12	P700/ CAT0_ERXD2	Ether CAT(CAT0_PHYAD1)
F13	P702/ CAT0_ERXD0	Ether CAT(CAT0_DUPLEX)
F14	P406/ CAT0_ERXD3	Ether CAT(CAT0_PHYAD0)
F15	P701/ CAT0_ERXD1	Ether CAT(CAT0_PHYAD2)
F16	P707/ IRQ8	Ether CAT(CAT0_INTRP)
F17	P705/ CAT0_TX_EN	Ether CAT
G1	PA00	INV1 SW1
G2	PA03/ TXD2	RS485
G3	PA05/ DE2	RS485
G4	PA07/ IRQ16	INV1 SW2, HV1 Over temp
G5	PC12/DSM1CLK0	DSMIF
G6	VCC5	VCC
G7	VSS6	GND
G8	VSS22	GND
G9	VCL6	VCL
G10	VSS13	GND
G11	VCC13	VCC
G12	P405/ CAT0_RX_DV	Ether CAT(CAT0_CONFIG2)
G13	P704/ CAT0_RX_ER	Ether CAT(CAT0_ISO)

Pin Layout	RA8T2 pin function	Signal function
G14	P703/ CAT0_RX_CLK	Ether CAT(CAT0_BCAST_OFF)
G15	PB14/CATSYNC0	Ether CAT
G16	PB12/CATLINKACT0	Ether CAT
G17	PB11/CATLEDERR	Ether CAT
H1	P504	INV1 InverterConnected
H2	P503	INV1 SafeLock
H3	P505	Smart Driver (INV1 SEL)/ HV1_Relay
H4	PA01	-
H5	PC11/DSM1CLK1	DSMIF
H6	VCC6	VCC
H7	VSS6	GND
H8	VSS26	GND
H9	VCL7	VCL
H10	VSS23	GND
H11	VCC3	VCC
H12	VSS3	GND
H13	P403/ CATI2CCLK	Ether CAT
H14	VCC10	VCC
H15	PB09/CATIRQ	Ether CAT
H16	PB10/CATLEDSTER	Ether CAT
H17	PB13/CATLINKACT1	Ether CAT
J1	P506	-
J2	P507/GTIOC0A	INV1 ENCA
J3	P508/GTIOC0B	INV1 ENCB
J4	P509/GTIOC1A	INV2 LED2
J5	PC13/DSM1DAT2	DSMIF
J6	VCC8	VCC
J7	VSS8	GND
J8	VCL10	VCL
J9	VCL8	VCL
J10	VSS24	GND
J11	VCL0	VCL
J12	VSS16	GND
J13	P404/CATI2CDATA	Ether CAT
J14	PB08/CATLEDRUN	Ether CAT
J15	VSS10	GND
J16	VSS11	GND
J17	VSS1	GND
K1	PC15/ CRX1	CAN
K2	P608	-
K3	P510	INV2 LED3
K4	PD00/ CTX1	CAN
K5	PC07/DSM0DAT0	DSMIF
K6	VSS15	GND
K7	VSS27	GND
K8	VCL11	VCL
K9	VCL9	VCL
K10	VSS25	GND
K11	VCL1	VCL
K12	VSS17	GND
K13	P410	Pmod6A(GPIO)/Pmod3A(GPIO)
K14	VCC11	VCC
K15	VCC1	VCC
K16	XTAL	XTAL
K17	EXTAL	EXTAL
L1	PC03	-
L2	PC02	-
L3	PC04/DSM0CLK0	DSMIF
L4	PC09	-

Pin Layout	RA8T2 pin function	Signal function
L5	PC05	-
L6	VCC15	VCC
L7	VSS9	GND
L8	VSS7	GND
L9	VSS20	GND
L10	VCL4	VCL
L11	VCL2	VCL
L12	VSS18	GND
L13	P414/ RXD4	Pmod3A
L14	P402/ CAT0_LINKSTA	Ether CAT
L15	VCC2	VCC
L16	P214/XCOUT	XCOUT
L17	P215/XCIN	XCIN
M1	PC00	-
M2	P607	-
M3	PC01	-
M4	PC08/DSM1DAT0	DSMIF
M5	PC10/DSM1CLK2	DSMIF
M6	P104	-
M7	VCC9	VCC
M8	VCC7	VCC
M9	P810	-
M10	VSS19	GND
M11	VCL3	VCL
M12	P412	Pmod3A/Pmod6A(GPIO)
M13	P710/CTS4	Pmod3A(GPIO)
M14	P411	Pmod3A(GPIO)
M15	P408/USB_VBUSEN	USB_VBUSEN
M16	VBATT	VCC
M17	VSS2	GND
N1	P605/GTIOC8A	INV1 PWM_UH
N2	P604/GTIOC8B	INV1 PWM_UL
N3	P606	-
N4	PC06	-
N5	P107	-
N6	P106	-
N7	P105	-
N8	P811	-
N9	P013/AN013	INV1 VW
N10	P011/AN011	INV1 VV
N11	P807	-
N12	P708/CAT0_MDC	Ether CAT
N13	P712/CATLATCH1	Ether CAT
N14	P714/CATSYNC1	Ether CAT
N15	P711/CATRESETOUT	Ether CAT
N16	P713/CATLATCH0	Ether CAT
N17	P401/RXD1	RMW
P1	P603/GTIOC7A	INV1 PWM_VH
P2	P602/GTIOC7B	INV1 PWM_VL
P3	P600/GTIOC6B	INV2 PWM_VL
P4	P601/GTIOC6A	INV2 PWM_VH
P5	P102/GTIOC2B	INV2 ENCB
P6	P801	-
P7	P803/IRQ19	INV2 HALL_W
P8	P812/AN022	INV1 IPFC1
P9	P012/AN012	INV1_VPFC
P10	P010/AN010	INV1 IW
P11	P009/AN009	INV1 VU
P12	P805/AN017	INV2_VR

Pin Layout	RA8T2 pin function	Signal function
P13	P512	Pmod6A(GPIO),Pmod3A(GPIO)
P14	P413	Pmod6A(GPIO),Pmod3A(GPIO)
P15	P515/SCL2	Pmod6A,INV1 IPS SCL,INV2 IPS SCL
P16	P709/CAT0_MDIO	Ether CAT
P17	P400/TXD1	RMW
R1	VCC14	VCC
R2	P315/SSLA3	Smart Driver (INV2 CS)
R3	P900	INV2 LED1
R4	P103/GTIOC2A	INV2 ENCA
R5	P101/GTETRGB	Smart Driver (INV2 nFault),INV2 OverCurrent
R6	P802/IRQ18	INV2 HALL_V
R7	P804/GTETRGD/IRQ14	INV2 ENC_Z,INV2 IPS CSNIRQN
R8	P501/AN020	INV1 IPS_A
R9	AVCC0	AVCC
R10	AVSS0	AGND
R11	P005/AN005	INV2 IPS_B#,INV1_HV_temp
R12	P003/AN003	INV2 VW,INV2 IPS_B
R13	P513/AN016	INV2 VV,INV2 IPS_A#,USB
R14	P514/SDA2	Pmod6A,INV1 IPS SDA,INV2 IPS SDA
R15	P415/TXD4	Pmod3A,Pmod6A(GPIO)
R16	P409/USB_OVRCURA_A-DS	USB
R17	P407/USB_VBUS	USB
T1	P205/GTIOC4A	INV2 PWM_WH
T2	P203/GTIOC5A	INV2 PWM_UH
T3	P313	INV2 SW2
T4	P901	INV2 SW1
T5	P809	Smart Driver (INV2 SEL)
T6	P800	INV2 SafeLock
T7	P502/AN019	INV1 IPS_B
T8	P014/AN014	INV1 IPS_A#
T9	VREFL	AGND
T10	VREFL0	AGND
T11	P004/AN004	INV2 IW
T12	P007/AN007	INV1 VDC
T13	P001/AN001	INV2 VU,INV2 IPS_A
T14	P806/AN018	INV2 VDC
T15	P715/IRQ12	Pmod6A
T16	P815/USB_DM	USB
T17	VSS_USB	GND
U1	P204/GTIOC4B	INV2 PWM_WL
U2	P202/GTIOC5B	INV2 PWM_UL
U3	P314/IRQ28	INV2 HALL_U
U4	VSS14	GND
U5	P808	Smart Driver (INV2 EN)
U6	P100	INV2 InverterConnected
U7	P500/AN021	INV1 IPS_B#
U8	P015/AN015	INV1_VR,INV1_IPFC2
U9	VREFH	AVCC
U10	VREFH0	AVCC
U11	P008/AN008	INV1 IV
U12	P006/AN006	INV1 IU
U13	P000/AN000	INV2 IV
U14	P002/AN002	INV2 IU
U15	P511/CAT1_LINKSTA	Ether CAT
U16	P814/USB_DP	USB
U17	VCC_USB	VCC

6. Design and Manufacture Information

You can obtain information on the design and manufacture of this product from [renesas.com](https://www.renesas.com).

7. Website and Support

In order to learn, download tools and documents, apply technical support for RA family MCU and its kit, visit the below Web site.

- RA Product Information [renesas.com/ra](https://www.renesas.com/ra)
- Renesas Support [renesas.com/support](https://www.renesas.com/support)

Revision History

Rev.	Date	Description	
		Page	Summary
1.00	May 1, 2025	—	First edition

MCB-RA8T2 User's Manual

Publication Date: Rev 1.00 May 1, 2025

Published by: Renesas Electronics Corporation

MCB-RA8T2 User's Manual



Renesas Electronics Corporation

R12UZ0171EJ0100