

## RH850 Evaluation Platform

## RH850/U2A 176pin

User's Manual: Piggyback Board

Y-RH850-U2A-176PIN-PB-T1-V1

The newest version of this document can be obtained from the following web location:

[Y-RH850-U2A-176PIN-PB-T1-V1](https://www.renesas.com/Y-RH850-U2A-176PIN-PB-T1-V1)

All information contained in these materials, including products and product specifications, represents information on the product at the time of publication and is subject to change by Renesas Electronics Corp. without notice. Please review the latest information published by Renesas Electronics Corp. through various means, including the Renesas Electronics Corp. website (<https://www.renesas.com>)

## Notice

1. Descriptions of circuits, software and other related information in this document are provided only to illustrate the operation of semiconductor products and application examples. You are fully responsible for the incorporation or any other use of the circuits, software, and information in the design of your product or system. Renesas Electronics disclaims any and all liability for any losses and damages incurred by you or third parties arising from the use of these circuits, software, or information.
2. Renesas Electronics hereby expressly disclaims any warranties against and liability for infringement or any other claims involving patents, copyrights, or other intellectual property rights of third parties, by or arising from the use of Renesas Electronics products or technical information described in this document, including but not limited to, the product data, drawings, charts, programs, algorithms, and application examples.
3. No license, express, implied or otherwise, is granted hereby under any patents, copyrights or other intellectual property rights of Renesas Electronics or others.
4. You shall be responsible for determining what licenses are required from any third parties, and obtaining such licenses for the lawful import, export, manufacture, sales, utilization, distribution or other disposal of any products incorporating Renesas Electronics products, if required.
5. You shall not alter, modify, copy, or reverse engineer any Renesas Electronics product, whether in whole or in part. Renesas Electronics disclaims any and all liability for any losses or damages incurred by you or third parties arising from such alteration, modification, copying or reverse engineering.
6. Renesas Electronics products are classified according to the following two quality grades: "Standard" and "High Quality". The intended applications for each Renesas Electronics product depends on the product's quality grade, as indicated below.

"Standard": Computers; office equipment; communications equipment; test and measurement equipment; audio and visual equipment; home electronic appliances; machine tools; personal electronic equipment; industrial robots; etc.

"High Quality": Transportation equipment (automobiles, trains, ships, etc.); traffic control (traffic lights); large-scale communication equipment; key financial terminal systems; safety control equipment; etc.

Unless expressly designated as a high reliability product or a product for harsh environments in a Renesas Electronics data sheet or other Renesas Electronics document, Renesas Electronics products are not intended or authorized for use in products or systems that may pose a direct threat to human life or bodily injury (artificial life support devices or systems; surgical implantations; etc.), or may cause serious property damage (space system; undersea repeaters; nuclear power control systems; aircraft control systems; key plant systems; military equipment; etc.). Renesas Electronics disclaims any and all liability for any damages or losses incurred by you or any third parties arising from the use of any Renesas Electronics product that is inconsistent with any Renesas Electronics data sheet, user's manual or other Renesas Electronics document.

7. No semiconductor product is absolutely secure. Notwithstanding any security measures or features that may be implemented in Renesas Electronics hardware or software products, Renesas Electronics shall have absolutely no liability arising out of any vulnerability or security breach, including but not limited to any unauthorized access to or use of a Renesas Electronics product or a system that uses a Renesas Electronics product. RENESAS ELECTRONICS DOES NOT WARRANT OR GUARANTEE THAT RENESAS ELECTRONICS PRODUCTS, OR ANY SYSTEMS CREATED USING RENESAS ELECTRONICS PRODUCTS WILL BE INVULNERABLE OR FREE FROM CORRUPTION, ATTACK, VIRUSES, INTERFERENCE, HACKING, DATA LOSS OR THEFT, OR OTHER SECURITY INTRUSION ("Vulnerability Issues"). RENESAS ELECTRONICS DISCLAIMS ANY AND ALL RESPONSIBILITY OR LIABILITY ARISING FROM OR RELATED TO ANY VULNERABILITY ISSUES. FURTHERMORE, TO THE EXTENT PERMITTED BY APPLICABLE LAW, RENESAS ELECTRONICS DISCLAIMS ANY AND ALL WARRANTIES, EXPRESS OR IMPLIED, WITH RESPECT TO THIS DOCUMENT AND ANY RELATED OR ACCOMPANYING SOFTWARE OR HARDWARE, INCLUDING BUT NOT LIMITED TO THE IMPLIED WARRANTIES OF MERCHANTABILITY, OR FITNESS FOR A PARTICULAR PURPOSE.
8. When using Renesas Electronics products, refer to the latest product information (data sheets, user's manuals, application notes, "General Notes for Handling and Using Semiconductor Devices" in the reliability handbook, etc.), and ensure that usage conditions are within the ranges specified by Renesas Electronics with respect to maximum ratings, operating power supply voltage range, heat dissipation characteristics, installation, etc. Renesas Electronics disclaims any and all liability for any malfunctions, failure or accident arising out of the use of Renesas Electronics products outside of such specified ranges.
9. Although Renesas Electronics endeavors to improve the quality and reliability of Renesas Electronics products, semiconductor products have specific characteristics, such as the occurrence of failure at a certain rate and malfunctions under certain use conditions. Unless designated as a high reliability product or a product for harsh environments in a Renesas Electronics data sheet or other Renesas Electronics document, Renesas Electronics products are not subject to radiation resistance design. You are responsible for implementing safety measures to guard against the possibility of bodily injury, injury or damage caused by fire, and/or danger to the public in the event of a failure or malfunction of Renesas Electronics products, such as safety design for hardware and software, including but not limited to redundancy, fire control and malfunction prevention, appropriate treatment for aging degradation or any other appropriate measures. Because the evaluation of microcomputer software alone is very difficult and impractical, you are responsible for evaluating the safety of the final products or systems manufactured by you.
10. Please contact a Renesas Electronics sales office for details as to environmental matters such as the environmental compatibility of each Renesas Electronics product. You are responsible for carefully and sufficiently investigating applicable laws and regulations that regulate the inclusion or use of controlled substances, including without limitation, the EU RoHS Directive, and using Renesas Electronics products in compliance with all these applicable laws and regulations. Renesas Electronics disclaims any and all liability for damages or losses occurring as a result of your noncompliance with applicable laws and regulations.
11. Renesas Electronics products and technologies shall not be used for or incorporated into any products or systems whose manufacture, use, or sale is prohibited under any applicable domestic or foreign laws or regulations. You shall comply with any applicable export control laws and regulations promulgated and administered by the governments of any countries asserting jurisdiction over the parties or transactions.
12. It is the responsibility of the buyer or distributor of Renesas Electronics products, or any other party who distributes, disposes of, or otherwise sells or transfers the product to a third party, to notify such third party in advance of the contents and conditions set forth in this document.
13. This document shall not be reprinted, reproduced or duplicated in any form, in whole or in part, without prior written consent of Renesas Electronics.
14. Please contact a Renesas Electronics sales office if you have any questions regarding the information contained in this document or Renesas Electronics products.

(Note1) "Renesas Electronics" as used in this document means Renesas Electronics Corporation and also includes its directly or indirectly controlled subsidiaries.

(Note2) "Renesas Electronics product(s)" means any product developed or manufactured by or for Renesas Electronics.

---

(Rev.5.0-1 October 2020)

## Corporate Headquarters

TOYOSU FORESIA, 3-2-24 Toyosu,  
Koto-ku, Tokyo 135-0061, Japan

[www.renesas.com](http://www.renesas.com)

## Trademarks

Renesas and the Renesas logo are trademarks of Renesas Electronics Corporation. All trademarks and registered trademarks are the property of their respective owners.

## Contact information

For further information on a product, technology, the most up-to-date version of a document, or your nearest sales office, please visit:

[www.renesas.com/contact/](http://www.renesas.com/contact/)

## General Precautions in the Handling of Microprocessing Unit and Microcontroller Unit Products

The following usage notes are applicable to all Microprocessing unit and Microcontroller unit products from Renesas. For detailed usage notes on the products covered by this document, refer to the relevant sections of the document as well as any technical updates that have been issued for the products.

### 1. Precaution against Electrostatic Discharge (ESD)

A strong electrical field, when exposed to a CMOS device, can cause destruction of the gate oxide and ultimately degrade the device operation. Steps must be taken to stop the generation of static electricity as much as possible, and quickly dissipate it when it occurs. Environmental control must be adequate. When it is dry, a humidifier should be used. This is recommended to avoid using insulators that can easily build up static electricity.

Semiconductor devices must be stored and transported in an anti-static container, static shielding bag or conductive material. All test and measurement tools including work benches and floors must be grounded. The operator must also be grounded using a wrist strap. Semiconductor devices must not be touched with bare hands. Similar precautions must be taken for printed circuit boards with mounted semiconductor devices.

### 2. Processing at power-on

The state of the product is undefined at the time when power is supplied. The states of internal circuits in the LSI are indeterminate and the states of register settings and pins are undefined at the time when power is supplied. In a finished product where the reset signal is applied to the external reset pin, the states of pins are not guaranteed from the time when power is supplied until the reset process is completed. In a similar way, the states of pins in a product that is reset by an on-chip power-on reset function are not guaranteed from the time when power is supplied until the power reaches the level at which resetting is specified.

### 3. Input of signal during power-off state

Do not input signals or an I/O pull-up power supply while the device is powered off. The current injection that results from input of such a signal or I/O pull-up power supply may cause malfunction and the abnormal current that passes in the device at this time may cause degradation of internal elements. Follow the guideline for input signal during power-off state as described in your product documentation.

### 4. Handling of unused pins

Handle unused pins in accordance with the directions given under handling of unused pins in the manual. The input pins of CMOS products are generally in the high-impedance state. In operation with an unused pin in the open-circuit state, extra electromagnetic noise is induced in the vicinity of the LSI, an associated shoot-through current flows internally, and malfunctions occur due to the false recognition of the pin state as an input signal become possible.

### 5. Clock signals

After applying a reset, only release the reset line after the operating clock signal becomes stable. When switching the clock signal during program execution, wait until the target clock signal is stabilized. When the clock signal is generated with an external resonator or from an external oscillator during a reset, ensure that the reset line is only released after full stabilization of the clock signal. Additionally, when switching to a clock signal produced with an external resonator or by an external oscillator while program execution is in progress, wait until the target clock signal is stable.

### 6. Voltage application waveform at input pin

Waveform distortion due to input noise or a reflected wave may cause malfunction. If the input of the CMOS device stays in the area between VIL (Max.) and VIH (Min.) due to noise, for example, the device may malfunction. Take care to prevent chattering noise from entering the device when the input level is fixed, and also in the transition period when the input level passes through the area between VIL (Max.) and VIH (Min.).

### 7. Prohibition of access to reserved addresses

Access to reserved addresses is prohibited. The reserved addresses are provided for possible future expansion of functions. Do not access these addresses as the correct operation of the LSI is not guaranteed.

### 8. Differences between products

Before changing from one product to another, for example to a product with a different part number, confirm that the change will not lead to problems.

The characteristics of a microprocessing unit or microcontroller unit products in the same group but having a different part number might differ in terms of internal memory capacity, layout pattern, and other factors, which can affect the ranges of electrical characteristics, such as characteristic values, operating margins, immunity to noise, and amount of radiated noise. When changing to a product with a different part number, implement a system-evaluation test for the given product.

# Table of Contents

1.	Overview .....	6
1.1	Package Components .....	6
1.2	Supported Main Boards.....	7
1.3	Main Features .....	7
1.4	Piggyback Board Versions .....	8
1.5	Piggyback Board Views.....	9
1.6	Mounting of the Device.....	11
2.	Jumpers, Connectors, Switches and LEDs .....	12
2.1	Jumper Overview .....	13
2.2	Connector Overview .....	15
2.3	LED Overview .....	16
3.	Power Supply .....	17
3.1	Board Power Connection .....	17
3.2	Voltage Distribution .....	18
3.3	Device Core Voltage (VDD) Selection .....	19
3.4	Current Measurement Bridges .....	19
3.5	Power Supply LEDs .....	19
4.	Clock Supply .....	21
4.1	Main Oscillator.....	21
4.2	Programmable Oscillator.....	22
4.3	X1 and X2 on CN15 .....	22
5.	Debug and Flash Programming Interfaces.....	23
6.	Other Circuitry .....	24
6.1	Operation Mode Selection.....	24
6.2	RESET.....	26
6.3	Signaling LEDs.....	28
6.4	Pull-Up/Pull-Down Pin Header .....	29
7.	Connectors .....	30
7.1	Connectors to the Main Board CN1 to CN3.....	30
7.1.1	Main Board Connector CN1 .....	30
7.1.2	Main Board Connector CN2.....	32
7.1.3	Main Board Connector CN3.....	34
7.2	Debug Connector CN4 .....	37
7.3	Pull-Up/Pull-Down Pin Header CN12.....	37
7.4	Device Ports Connectors CN13 to CN16 .....	38
7.4.1	Device Ports Connector CN13.....	38
7.4.2	Device Ports Connector CN14.....	39
7.4.3	Device Ports Connector CN15.....	40
7.4.4	Device Ports Connector CN16.....	41

8.	Jumper Configuration Examples .....	42
8.1	Stand-Alone Operation with Power Supply by Debugger .....	42
8.2	Configuration Examples .....	43
8.2.1	General Settings .....	43
8.2.2	Jumper Indicators.....	43
8.2.3	Stand-Alone Operation with Single External Power Supply 3.3 V: Minimum Configuration 1 .....	44
8.2.4	Stand-Alone Operation with Single External Power Supply 5.0 V: Minimum Configuration 2 .....	45
8.2.5	Stand-Alone Operation with All External Power Supplies: Maximum Configuration .....	46
8.2.6	Operation on the Main Board: No External Supply .....	47
9.	Precautions .....	48
9.1	Power-Off Sequence .....	48
9.2	CAN0RX is Shared with FLASH Programmer Signal FLMD1 .....	48
9.3	Assembly of Oscillator X3 .....	48
9.4	Power On Piggyback Board Without RH850 Microcontroller installed.....	49
10.	Mechanical Dimensions.....	50
11.	Schematics.....	51
11.1	PCB Version D019381_06_V0100.....	52
11.1.1	Page 1 .....	52
11.1.2	Page 2 .....	53
11.1.3	Page 3 .....	54
11.1.4	Page 4 .....	55
11.1.5	Page 5 .....	56
11.2	PCB Version D019381_06_V0120.....	57
11.2.1	Page 1 .....	57
11.2.2	Page 2 .....	58
11.2.3	Page 3 .....	59
11.2.4	Page 4 .....	60
11.2.5	Page 5 .....	61

## 1. Overview

The RH850/U2A 176pin piggyback board is part of the RH850 Evaluation Platform and serves as a simple and easy to use platform for evaluating the features and performance of Renesas Electronics' 32-bit RH850/U2A 176pin microcontrollers.

### Notes

1. This document describes the functionality of the piggyback board and guides the user through its operation.  
For details regarding the operation of the microcontroller, refer to the device's Hardware User's Manual.
2. In this document low active signals are marked by an appended 'Z' to the pin or signal name. E.g. the reset pin is named RESETZ.
3. In this document following abbreviations are used:
  - H level, L level: high or low signal level of a digital signal, the absolute voltage value depends on the signal

### 1.1 Package Components

The Y-RH850-U2A-176PIN-PB-T1-V1 product package consists of the following items. After you have unpacked the box, check if your Y-RH850-U2A-176PIN-PB-T1-V1 package contains all of these items. *Table 1.1 Package Components for the Y-RH850-U2A-176PIN-PB-T1-V1* shows the packing components of the Y-RH850-U2A-176PIN-PB-T1-V1 package.

**Table 1.1 Package Components for the Y-RH850-U2A-176PIN-PB-T1-V1**

Item	Description	Quantity
D019381	RH850/U2A 176pin piggyback board	1
D019470-24	Product contents list	1
Jumpers (2-way, 0.1")	In the bag	31 (min. quantity)
Red Hirschmann 4 mm power lab socket	In the bag	1
Resonator, HC49, 16 / 20 / 24 MHz	In the bag	3

### Note

Please keep the Y-RH850-U2A-176PIN-PB-T1-V1 packing box at hand for later reuse in sending the product for repairs or for other purposes. Always use the original packing box when transporting the Y-RH850-U2A-176PIN-PB-T1-V1. If packing of your product is not complete, it may be damaged during transportation.

## 1.2 Supported Main Boards

This piggyback board can be used as a standalone board, or it can be mated with a main board. The following main boards are supported:

- Y-RH850-X1X-MB-T1-V1
- Y-RH850-X1X-MB-T2-V<sub>x</sub>
- Y-RH850-X2X-MB-T1-V1
- Y-COMMON-MB-T1-V1

## 1.3 Main Features

- Burn-in socket for mounting of the device
- Several power set-up options
  - Combined operation with powering from main board
  - Stand-alone operation with single power supply (e.g. 3.3 V or 5.0 V only)
  - Stand-alone operation with flexible, individual power supply (typ. 1.12 V, 3.3 V, 5.0 V)
- Debugging and programming interface:
  - 14-pin LPD/JTAG Debug Connector (e.g. for using E2 OCD Emulator or PG-FP6 Flash Programmer)
- Pin headers for direct access to each device pin
- Reset switch
- External clock circuit with an exchangeable 16/20/24/40 MHz Crystal Resonator
- General purpose signaling LEDs
- Jumpers for device mode selection and other configuration options
- Operating temperature from 0 °C to +40 °C

1.4 Piggyback Board Versions

The following versions of the piggyback board are available:

Table 1.2 Y-RH850-U2A-176PIN-PB-T1-V1 board versions

Board version	Schematic version
D019381_06_V0100	D019381_04_V0100
D019381_06_V0120	D019381_04_V0120

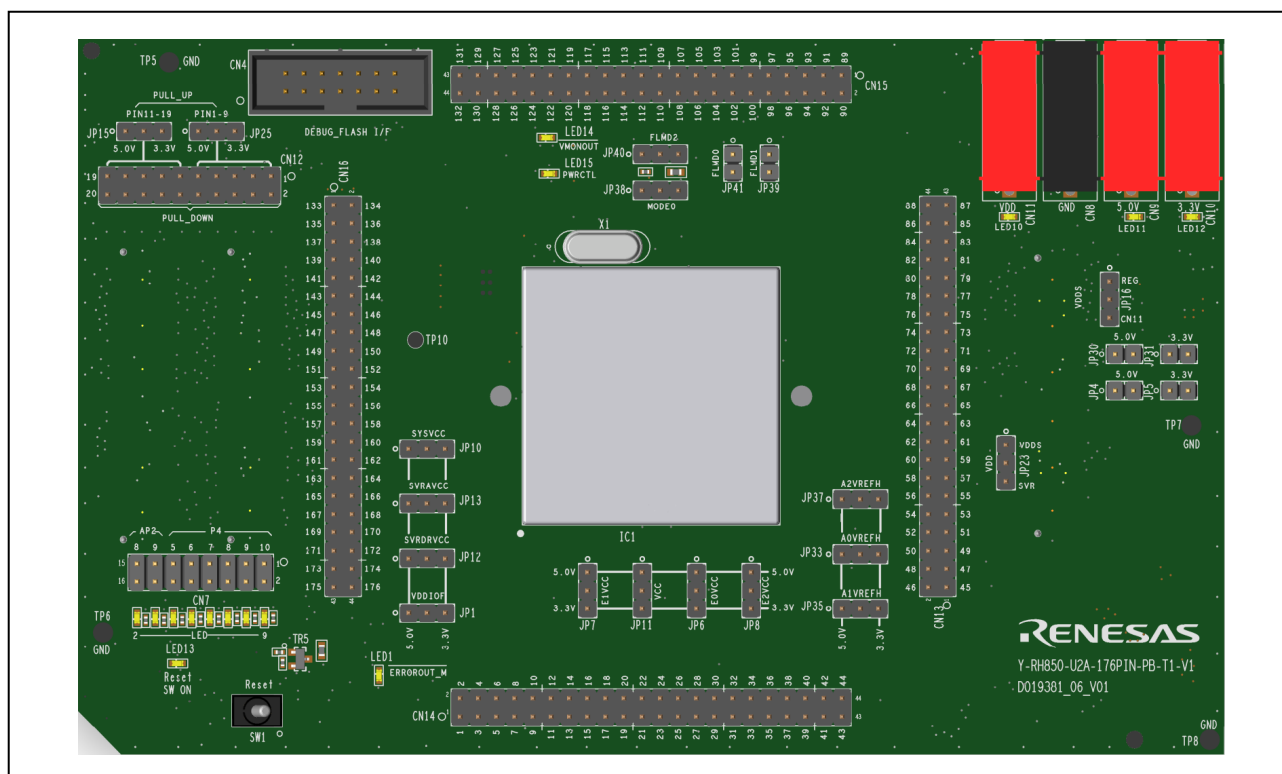
Table 1.3 shows the differences of the board versions.

Table 1.3 Y-RH850-U2A-176PIN-PB-T1-V1 board version differences

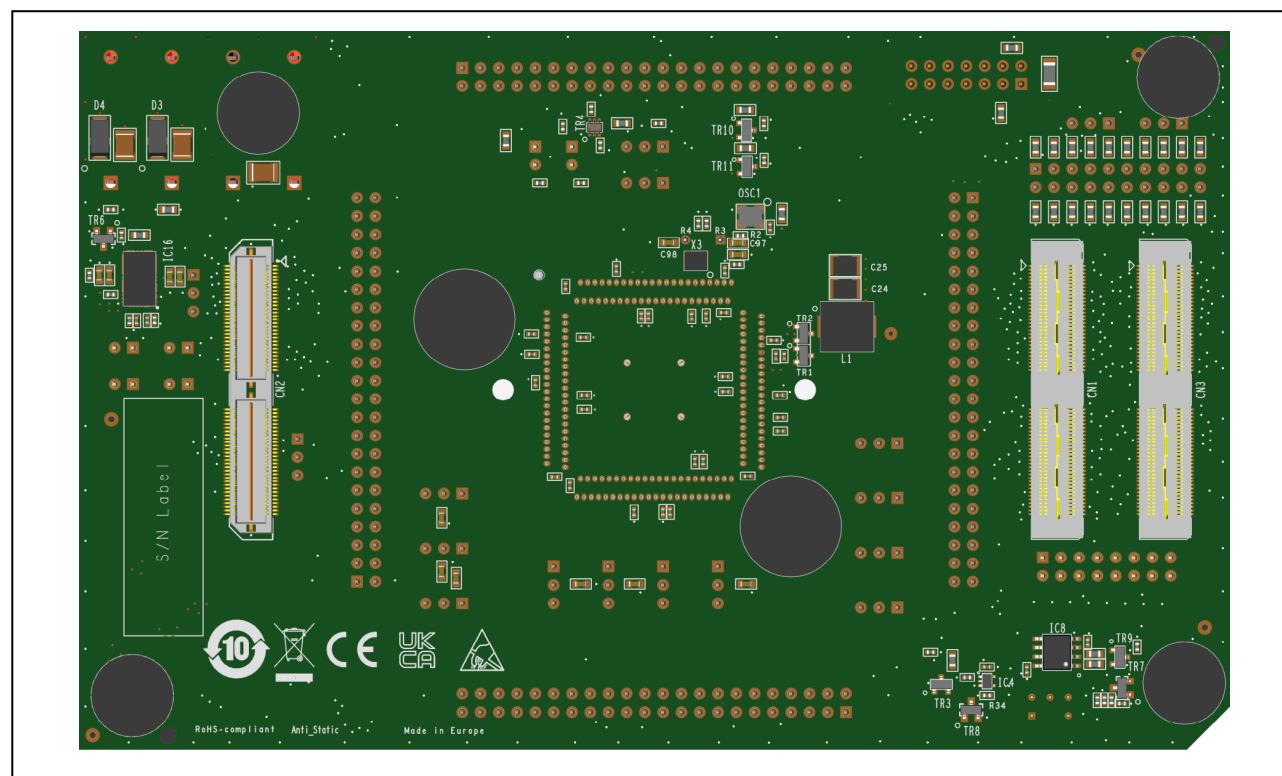
No.	Modified Function	Detailed Description of Changes	D019381_06_V0100	D019381_06_V0120
1	FLMD0 circuit	Changed resistors R19 and R88 in FLMD0 circuit.	Resistors R19 and R88 are 100kOhm.	Resistors R19 and R88 are 10kOhm.
2	Oscillator circuit	Changed markings for not assembled components.	Not assembled components are marked "DNF/DNB".	Not assembled components are crossed out.
3	Power supply connector CN11	Changed markings for not assembled components.	Connector CN11 is marked "DO NOT FIT / TO DELIVER WITH THE BOARD".	Connector CN11 is crossed out.



Following figures provide the top and bottom views of the piggyback board.



**Figure 1.1 Piggyback board top view**



**Figure 1.2 Piggyback board bottom view**

Following figures provide the drawing of top and bottom views of the piggyback board.

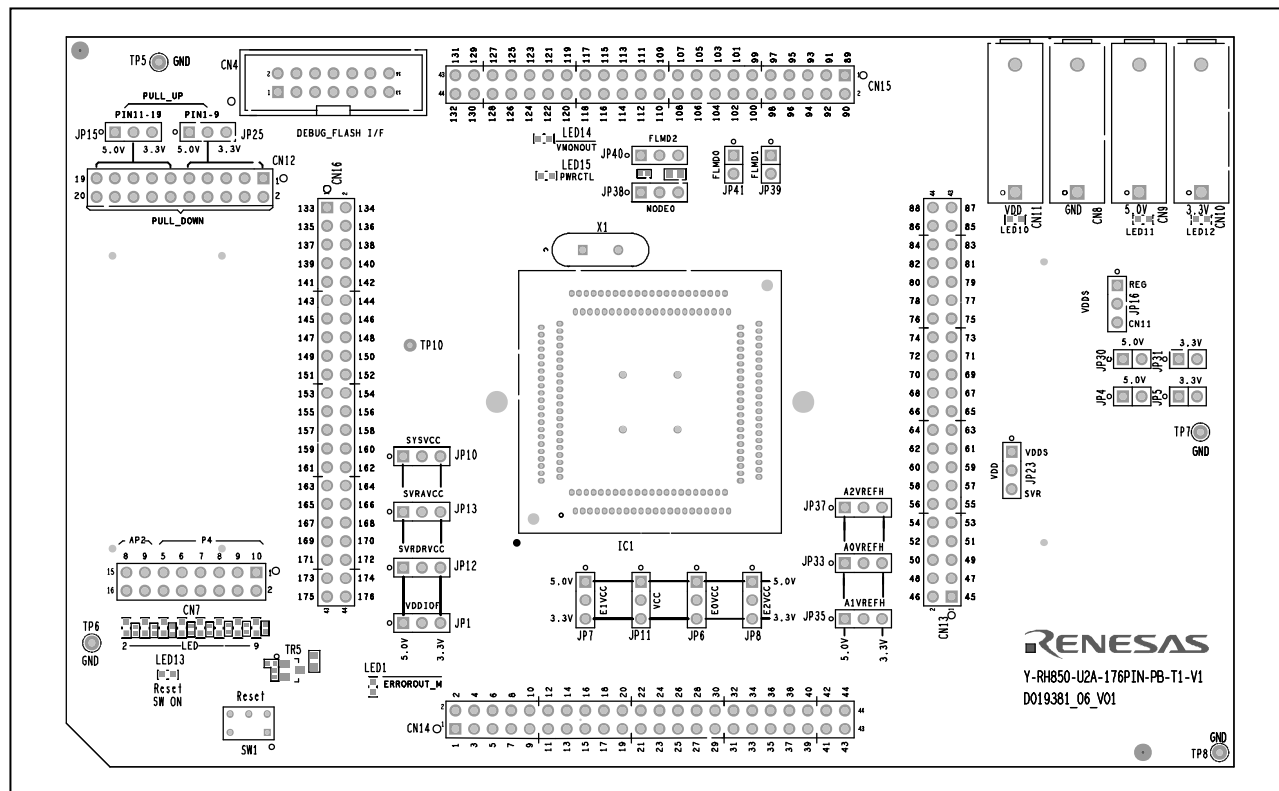


Figure 1.3 Piggyback Board top view

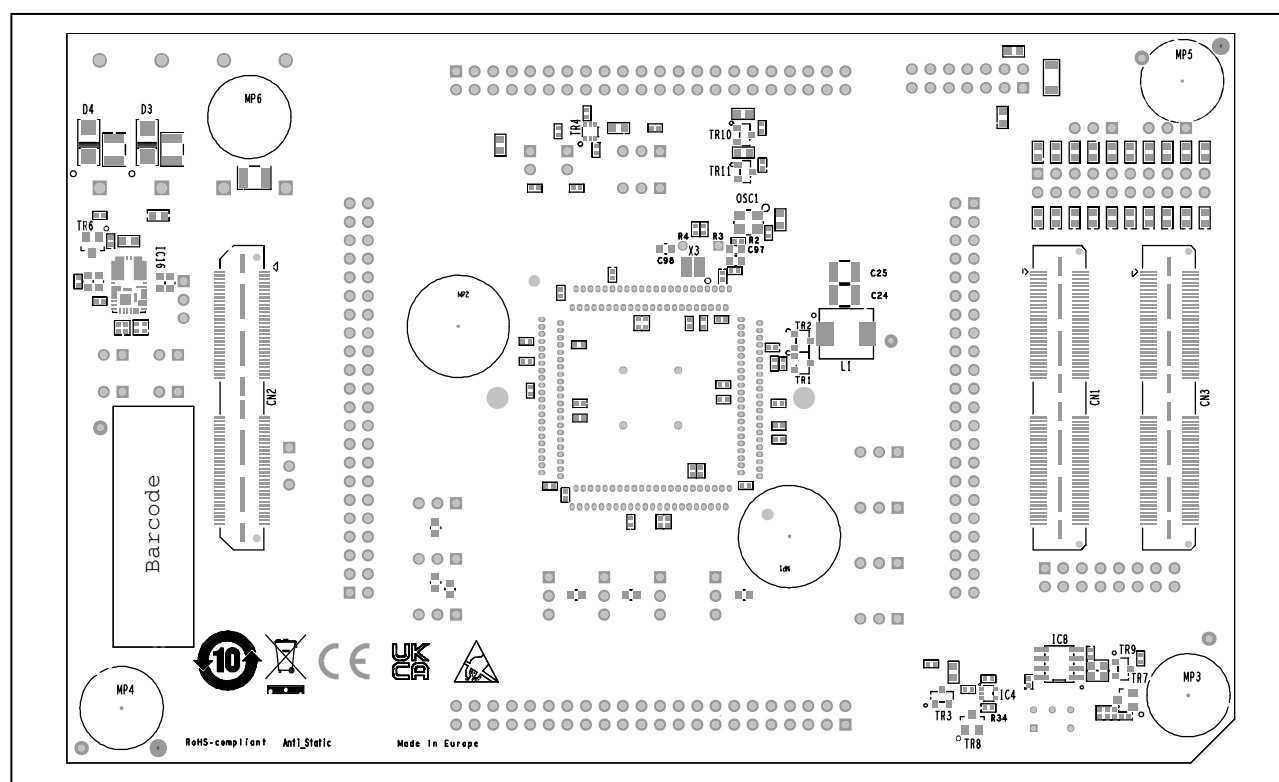


Figure 1.4 Piggyback Board bottom view

## 1.6 Mounting of the Device

The board is designed for use with the following device(s):

- R7F702302FAFK (RH850/U2A6)

The device must be placed inside the socket IC1. To insert the device, align the device pin 1 with the marking of the socket.

Pin 1 of the socket is on the side with the “IC1” label (see also white point in *Figure 1.1 Piggyback board top view* and in *Figure 1.5 Yamaichi socket IC572-1764-038N-YD*).

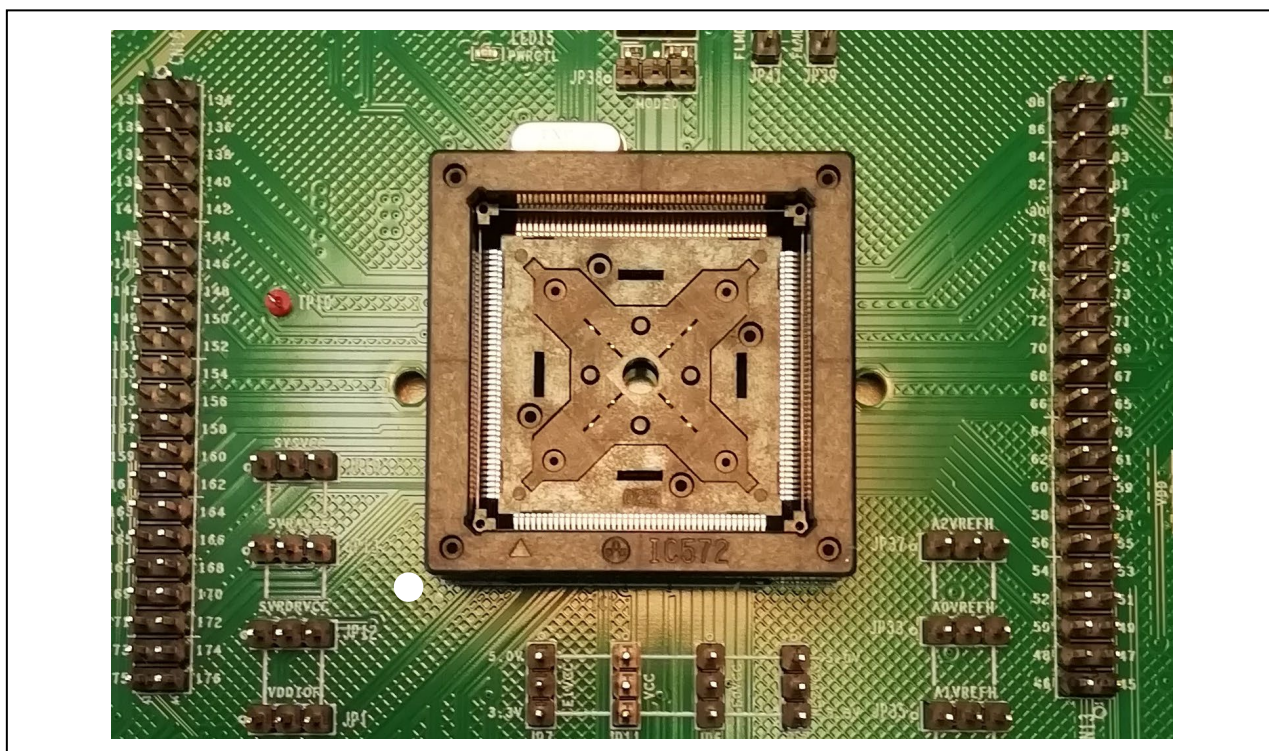


Figure 1.5 Yamaichi socket IC572-1764-038N-YD

### CAUTION

Be careful with the device placement in the socket to avoid damage of the device.

## 2. Jumpers, Connectors, Switches and LEDs

This section provides complete lists of all jumpers, connectors, and LEDs.

The placement of these components on the board is depicted in the figure below.

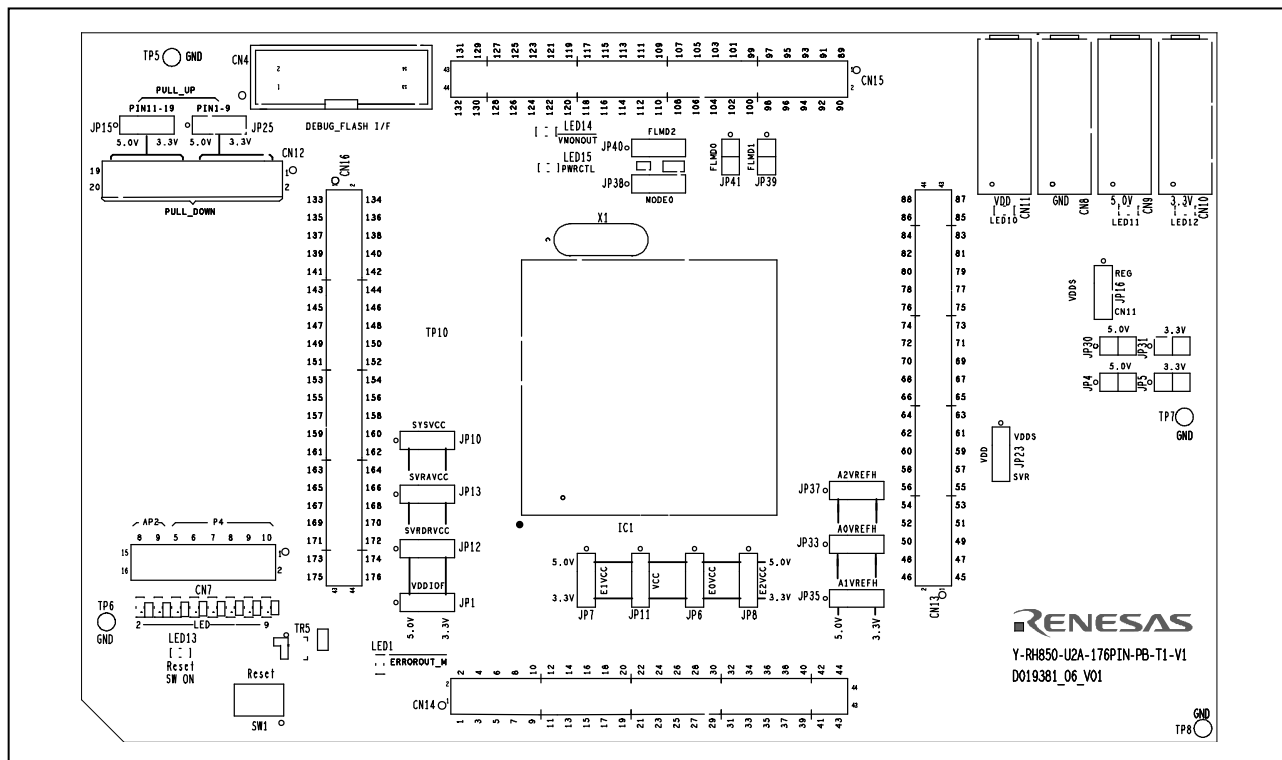


Figure 2.1 Placement of jumpers, connectors and LEDs on top side

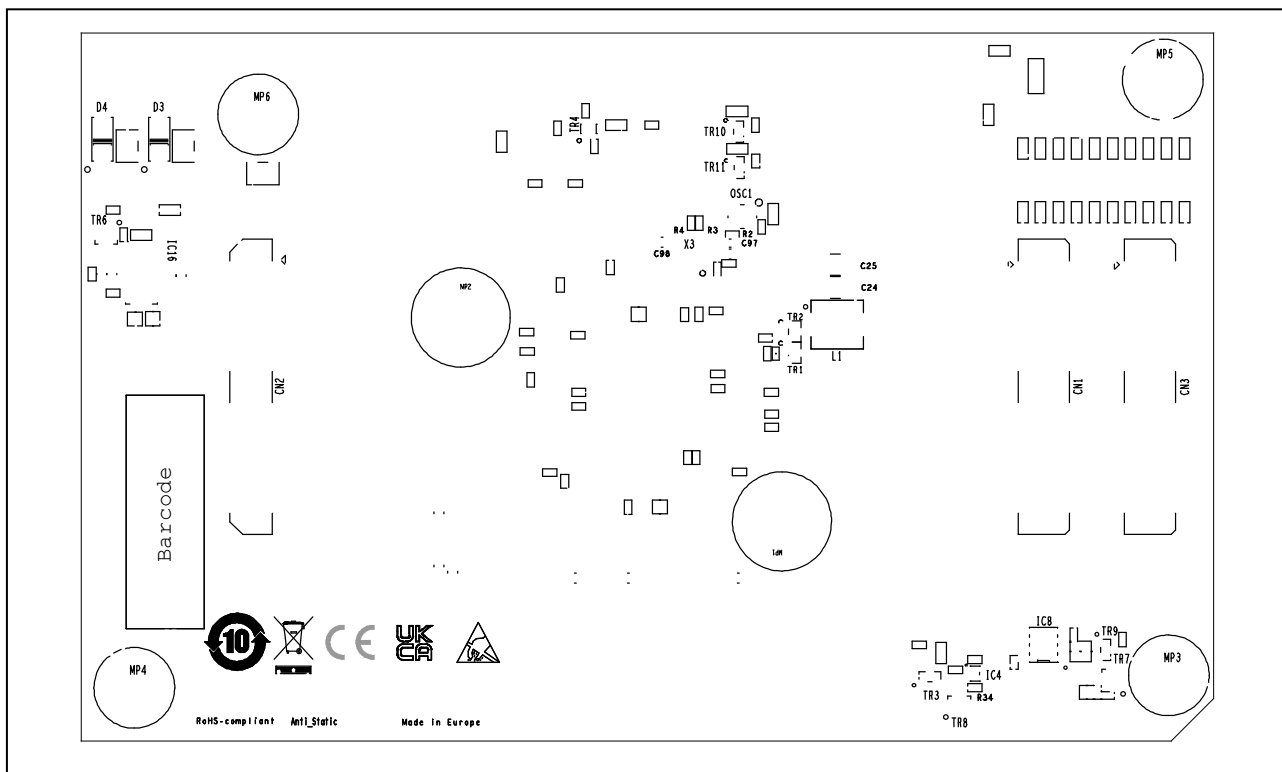


Figure 2.2 Placement of connectors on bottom side

## 2.1 Jumper Overview

The following table provides an overview of all jumpers.

**Table 2.1 Jumper overview**

Jumper	Function	Remark
JP1	Voltage selection for VDDIOF <ul style="list-style-type: none"> <li>JP1[2-1]: 5.0 V</li> <li>JP1[2-3]: 3.3 V</li> </ul>	refer to 3.2 <i>Voltage Distribution</i>
JP4	Current measurement bridge of 5.0 V power rail	refer to 3.4 <i>Current Measurement Bridges</i>
JP5	Current measurement bridge of 3.3 V power rail	
JP6	Voltage selection for E0VCC <ul style="list-style-type: none"> <li>JP6[2-1]: 5.0 V</li> <li>JP6[2-3]: 3.3 V</li> </ul>	refer to 3.2 <i>Voltage Distribution</i>
JP7	Voltage selection for E1VCC <ul style="list-style-type: none"> <li>JP7[2-1]: 5.0 V</li> <li>JP7[2-3]: 3.3 V</li> </ul>	
JP8	Voltage selection for E2VCC <ul style="list-style-type: none"> <li>JP8[2-1]: 5.0 V</li> <li>JP8[2-3]: 3.3 V</li> </ul>	
JP10	Voltage selection for SYSVCC <ul style="list-style-type: none"> <li>JP10[2-1]: 5.0 V</li> <li>JP10[2-3]: 3.3 V</li> </ul>	
JP11	Voltage selection for VCC <ul style="list-style-type: none"> <li>JP11[2-1]: 5.0 V</li> <li>JP11[2-3]: 3.3 V</li> </ul>	
JP12	Voltage selection for SVRDRVCC <ul style="list-style-type: none"> <li>JP12[2-1]: 5.0 V</li> <li>JP12[2-3]: 3.3 V</li> </ul>	
JP13	Voltage selection for SVRAVCC <ul style="list-style-type: none"> <li>JP13[2-1]: 5.0 V</li> <li>JP13[2-3]: 3.3 V</li> </ul>	
JP15	Voltage selection for Pull-up/Pull-down pin header CN12 pins 11, 13, 15, 17, 19 <ul style="list-style-type: none"> <li>JP15[2-1]: 5.0 V</li> <li>JP15[2-3]: 3.3 V</li> </ul>	refer to 6.4 <i>Pull-Up/Pull-Down Pin Header</i>
JP16	Voltage selection for 1.12 V VDDs <ul style="list-style-type: none"> <li>JP16[2-1]: reg_vcc_VDD</li> <li>JP16[2-3]: IN_1v12</li> </ul>	refer to 3.3 <i>Device Core Voltage (VDD) Selection</i>
JP23	Voltage selection for VDD <ul style="list-style-type: none"> <li>JP23[2-1]: VDDs</li> <li>JP23[2-3]: SVR_OUTPUT</li> </ul>	
JP25	Voltage selection for Pull-up/Pull-down pin header CN12 pins 1, 3, 5, 7, 9 <ul style="list-style-type: none"> <li>JP25[2-1]: 5.0 V</li> <li>JP25[2-3]: 3.3 V</li> </ul>	refer to 6.4 <i>Pull-Up/Pull-Down Pin Header</i>

Table 2.1 Jumper overview (cont'd)

Jumper	Function	Remark
JP30	Current measurement bridge of 5.0 V A/D Converter power supply	refer to 3.4 <i>Current Measurement Bridges</i>
JP31	Current measurement bridge of 3.3 V A/D Converter power supply	
JP33	Voltage selection for A0VREFH <ul style="list-style-type: none"> <li>JP33[2-1]: 5.0 V</li> <li>JP33[2-3]: 3.3 V</li> </ul>	refer to 3.2 <i>Voltage Distribution</i>
JP35	Voltage selection for A1VREFH <ul style="list-style-type: none"> <li>JP35[2-1]: 5.0 V</li> <li>JP35[2-3]: 3.3 V</li> </ul>	
JP37	Voltage selection for A2VREFH <ul style="list-style-type: none"> <li>JP37[2-1]: 5.0 V</li> <li>JP37[2-3]: 3.3 V</li> </ul>	
JP38	MODE0 level selection	refer to 6.1 <i>Operation Mode Selection</i>
JP39	FLMD1 level selection	
JP40	FLMD2 level selection	
JP41	FLMD0 level selection	



## 2.2 Connector Overview

The following table provides an overview of all connectors.

**Table 2.2 Connector overview**

Connector	Function	Remark
CN1	Main Board connectors	refer to 7.1 <i>Connectors to the Main Board CN1 to CN3</i>
CN2		
CN3		
CN4	Debug connector	refer to 5 <i>Debug and Flash Programming Interfaces</i> and 7.2 <i>Debug Connector CN4</i>
CN7	Signaling LEDs pin header	refer to 6.3 <i>Signaling LEDs</i>
CN8	GND for external power supply	refer to 3.1 <i>Board Power Connection</i> , connector CN11 is not assembled on the board
CN9	+5.0 V external power supply	
CN10	+3.3 V external power supply	
CN11	+1.12 V external power supply *	
CN12	Pull-up/Pull-down pin header	refer to 6.4 <i>Pull-Up/Pull-Down Pin Header</i> and 7.3 <i>Pull-Up/Pull-Down Pin Header CN12</i>
CN13	Device ports connectors	refer to 7.4 <i>Device Ports Connectors CN13 to CN16</i>
CN14		
CN15		
CN16		

Note: \* Refer to 3.3 *Device Core Voltage (VDD) Selection* for further details about VDD voltage.

### 2.3 LED Overview

The following table provides an overview of all LED.

**Table 2.3 LED overview**

LED	Function	Color	Remark
LED1	Device ERROROUT_M signal	red	
LED2	Signaling LED	yellow	connection via CN7, refer to 6.3 <i>Signaling LEDs</i>
LED3	Signaling LED		
LED4	Signaling LED		
LED5	Signaling LED		
LED6	Signaling LED		
LED7	Signaling LED		
LED8	Signaling LED		
LED9	Signaling LED		
LED10	1.12 V device core voltage VDD	green	refer to 3.5 <i>Power Supply LEDs</i>
LED11	5.0 V power supply P5V0	green	
LED12	3.3 V power supply P3V3	green	
LED13	Reset switch SW1 on	red	refer to 6.2 <i>RESET</i>
LED14	Device VMONOUT signal	red	
LED15	Device PWRCTL signal	red	



## 3. Power Supply

### 3.1 Board Power Connection

The device and the board require various power supply voltages:

- 3.3 V for most of the digital circuitry on the device and on the board
- 5 V in case some ports shall be operated with 5 V I/O voltage
- 1.12 V for the device's VDD core voltage supply  
Refer to *3.3 Device Core Voltage (VDD) Selection* for further details about VDD voltage.

---

#### Note

Within this document all voltage values are considered as 'typical'.

Refer to the 'Electrical Characteristics' section of the Hardware User's Manual for allowed voltage ranges.

---

The following connectors are available to supply external voltages:

- Four 4 mm 'banana-type' connectors are used to connect external power supplies:
  - black connector CN8 for GND (VSS)
  - red connector CN9 for 5 V
  - red connector CN10 for 3.3 V
  - red connector CN11 for 1.12 VRefer to *3.3 Device Core Voltage (VDD) Selection* for further details about VDD voltage.

Connector CN11 is not assembled at delivery of the board, but separately supplied with the board package.

In case the piggyback board is mounted on a Main Board, all voltages except for 1.12 V (VDD) are supplied by the Main Board.

---

#### CAUTION

Do not power on the piggyback board when no RH850 microcontroller is installed in socket IC1 because the switching regulator in the SVR power supply circuit doesn't have defined control signals when the microcontroller is not installed and may be damaged.

If you want to power on the piggyback board without microcontroller, make sure jumper JP12[1-2-3] (SVRDRVCC) is open.

Do not supply the 5 V (CN9) and 3.3 V (CN10) voltage directly to the piggyback board in case it is mounted on the Main Board.

Connecting external 1.12 V via CN11 (and GND via CN8) is still an option also in this case.

---

For some general power supply scenarios, the jumper settings are described in *8 Jumper Configuration Examples*.

### 3.2 Voltage Distribution

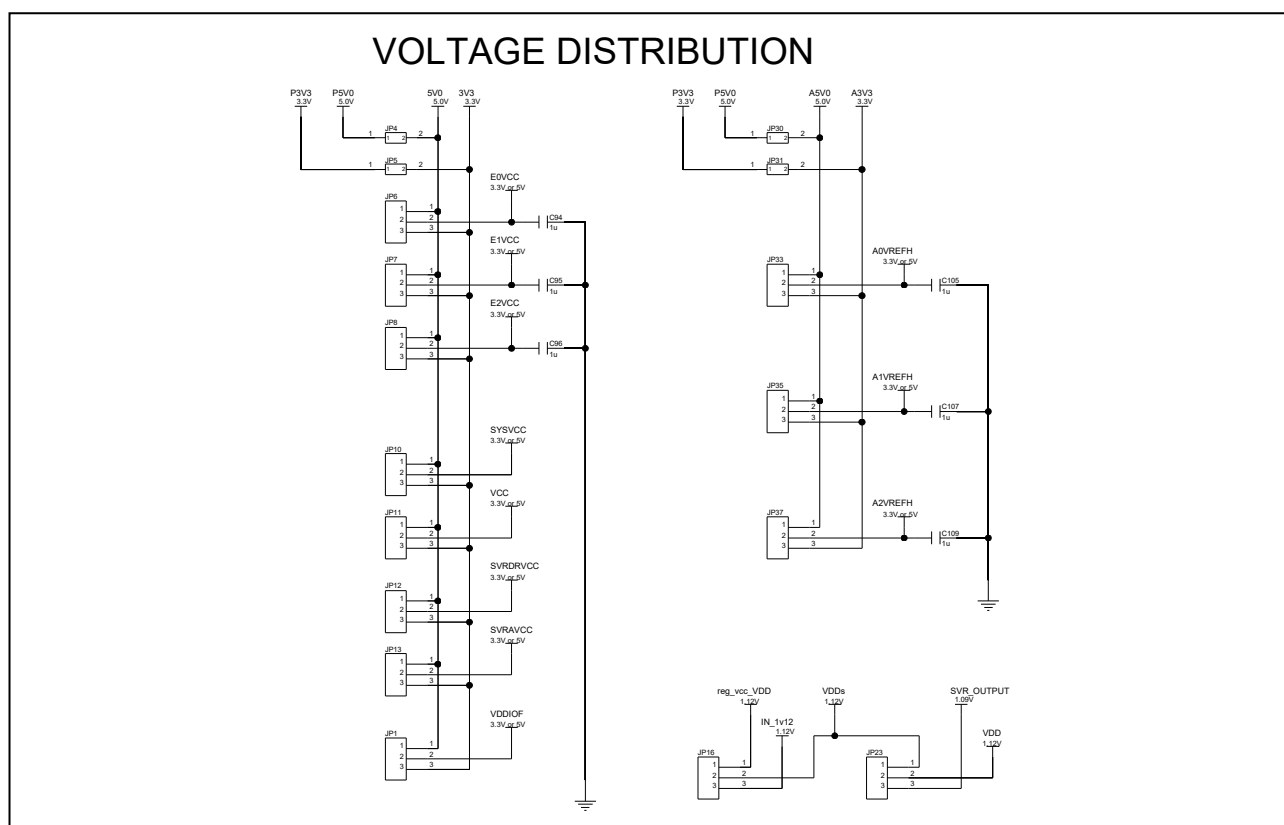
The following table shows the required device power supply pins and their function:

**Table 3.1 Device power supply pins**

Device power supply pin	Voltage	Function
E0VCC, E1VCC, E2VCC	3.3 V, 5 V	Power supply for I/O ports
YSVCC	3.3 V, 5 V	Power supply for System Logic and internal voltage regulator power I/O ports
VCC	3.3 V, 5 V	Power supply for on-chip flash memory
SVRDRVCC	3.3 V, 5 V	Power supply for on-chip Switching Voltage Regulator (SVR)
SVRAVCC	3.3 V, 5 V	
VDDIOF	3.3 V, 5 V	I/O voltage supply for the Main Board
A0VREFH, A1VREFH, A2VREFH	3.3 V, 5 V	A/D Converter's reference voltages
VDD	1.12 V *	Core supply voltage

Note: \* Refer to 3.3 Device Core Voltage (VDD) Selection for further details about VDD voltage.

Each of the above voltages can be selected from 5.0 V or 3.3 V (where applicable, see table above) by a set of jumpers. For details refer to *Figure 3.1 Voltage distribution* and *Table 2.1 Jumper overview*



**Figure 3.1 Voltage distribution**

### 3.3 Device Core Voltage (VDD) Selection

The device core voltage VDD (typ.1.12 V) can be

- supplied from external via CN11 (voltage IN\_1v12)
- generated from the P3V3 power rail by use of the on-board voltage regulator IC16 (voltage reg\_vcc\_VDD)
- generated by the on-chip Switching Voltage Regulator (SVR) in combination with device external power transistors TR1, TR2 (voltage SVR\_OUTPUT)

#### Note

The IN\_1v12 and reg\_vcc\_VDD voltages have a level of typical 1.12 V, which is higher than the typical device core voltage VDD of 1.09 V. The 30 mV difference is supposed to compensate voltage drops over the power rails on the board, in particular over the jumpers.

Selection of the VDD source is achieved by use of the jumpers JP23 and JP16:

- JP23[2-1]: VDD = 1.12 V (VDDs) from
  - JP16[2-1]: VDDs = reg\_vcc\_VDD from on-board voltage regulator IC16
  - JP16[2-3]: VDDs = IN\_1v12 from external supply CN11
- JP23[2-3]: VDD = 1.09 V (SVR\_OUTPUT)

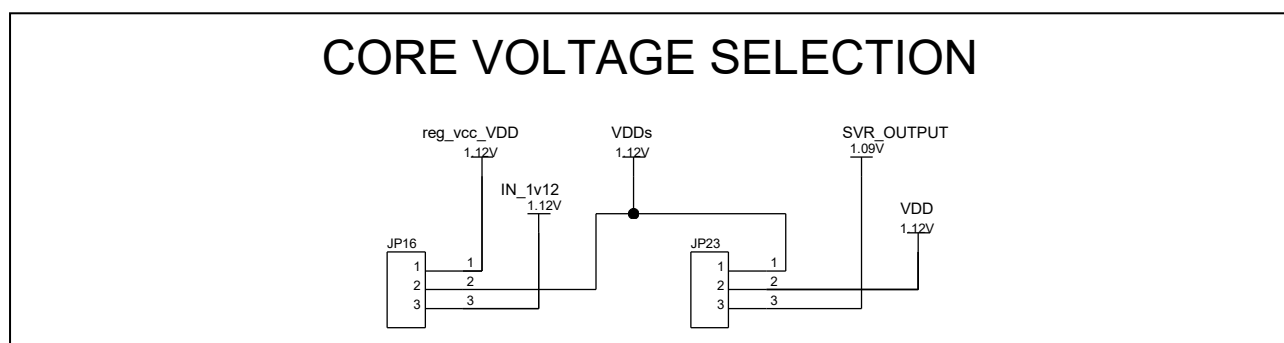


Figure 3.2 Device core voltage (VDD) selection

### 3.4 Current Measurement Bridges

The total current of the 5V0 and 3V3 power rails can be measured by replacing the jumpers JP4 and JP5 with a current meter.

Accordingly, the total current via the A/D Converter's supply voltages A5V0 and A3V3 can be measured via the jumpers JP30 and JP31 respectively.

The current of particular power supply pins of the device can be measured via their respective supply selection jumpers, refer to *Figure 3.1 Voltage distribution*.

### 3.5 Power Supply LEDs

The following green LEDs indicate the presence of various voltages on the piggyback board:

- LED11 for 5.0 V power rail P5V0

- LED12 for 3.3 V power rail P3V3
- LED10 for 1.12 V device core voltage VDD

## 4. Clock Supply

The device's operation clock can be generated by

- the on-chip main oscillator circuit in combination with an off-chip resonator, connected to the X1, X2 terminals
- an off-chip oscillator, the clock is fed into the X1 terminal

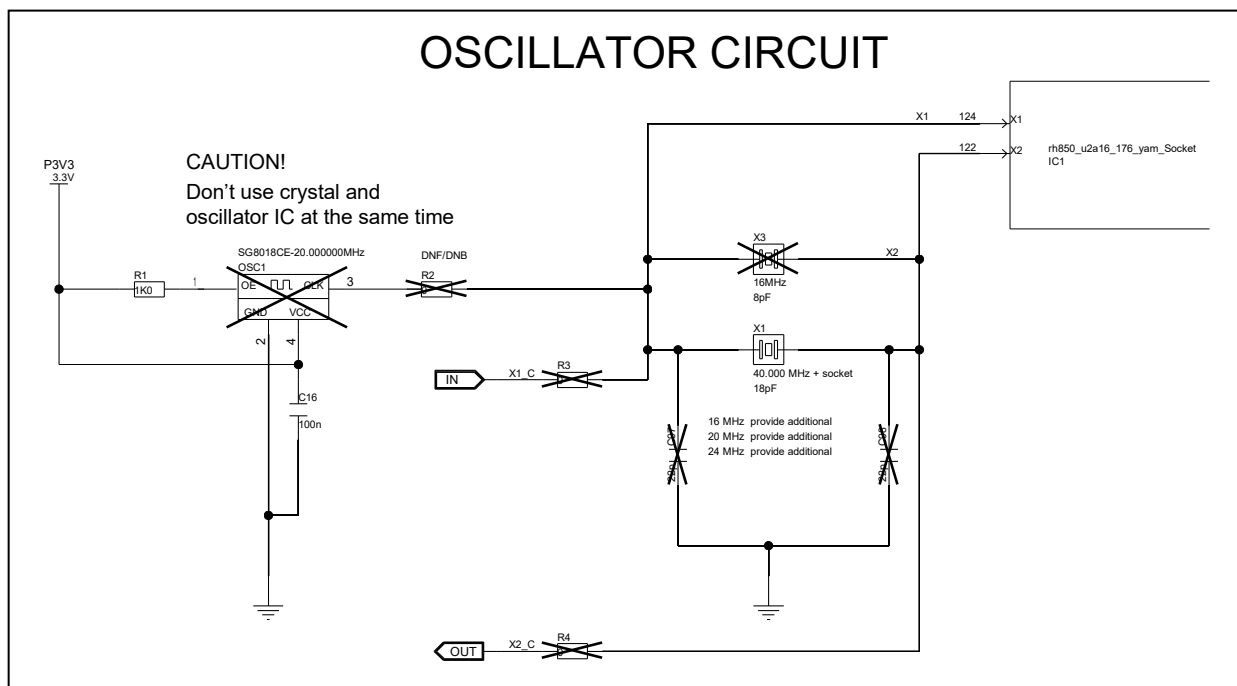


Figure 4.1 Clock supply

### 4.1 Main Oscillator

For operating the on-chip main oscillator the piggyback board provides a socket (X1) for a resonator.

Optionally a resonator (X3) can be soldered on the board, refer to the figure above.

Several resonators for various main oscillator frequencies (16 MHz, 20 MHz, 24 MHz, 40 MHz) are included in the board package.

The 40MHz resonator is by default mounted to X1.

For package content please refer to *1.1 Package Components*

#### CAUTION

Only one oscillator, either X1 or X3, can be used at any one time for the main oscillator.

## 4.2 Programmable Oscillator

Instead of using the on-chip main oscillator a programmable crystal oscillator (OSC1) circuit can be soldered on the board.

The available footprint and circuitry are designed for a SG-8018CE programmable crystal oscillator from Seiko Epson. The output of this oscillator can be connected to X1 terminal via resistor R2.

The SG-8018CE is neither mounted on nor provided with the board. For details about the available circuitry, refer to *Figure 4.1 Clock supply*.

### CAUTION

---

A resonator mounted on socket X1 or soldered on X3 must not be used in parallel to another clock source.

---

## 4.3 X1 and X2 on CN15

To minimize disturbance on the resonator signal the device pins X1 and X2 are by default not connected to a pin header. If needed the pins can be connected to CN15 via 0  $\Omega$  resistors:

- X1: Pin 36 (marking: 124) of CN15 to supply an external clock to the device via R3
- X2: Pin 34 (marking: 122) of CN15 for measurement purposes of the clock via R4

## 5. Debug and Flash Programming Interfaces

For debugging and flash programming purposes debug and flash programming tools can be connected to the CN4 connector.

Refer to *7.2 Debug Connector CN4* for details about the CN4 pin assignment.

The Renesas standard emulator for RH850/U2A is the E2 emulator. This can be used as emulator for debugging or as flash programmer.

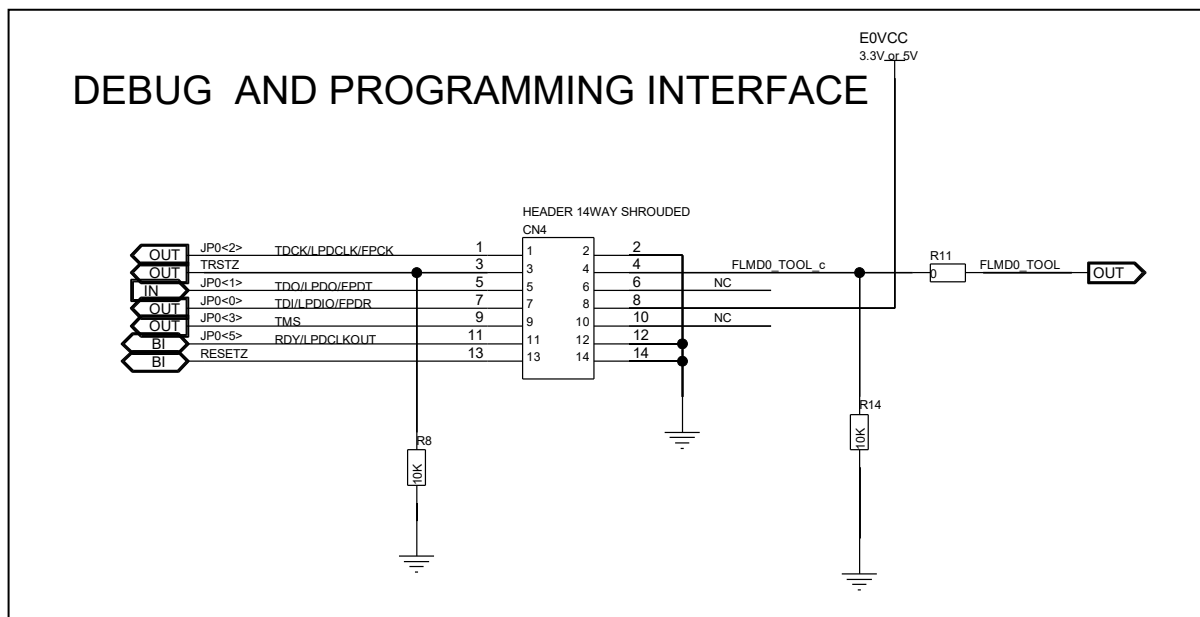


Figure 5.1 Debug interface

## 6. Other Circuitry

### 6.1 Operation Mode Selection

The piggyback board gives the possibility to configure the following jumpers for selection of the device operation mode:

**Table 6.1 Device operation mode selection jumpers**

Jumper	Function
JP38	MODE0 pin level <ul style="list-style-type: none"> <li>JP38[2-1]: MODE0 = H level</li> <li>JP38[2-3]: MODE0 = GND</li> </ul>
JP41	FLMD0 pin level <ul style="list-style-type: none"> <li>JP41[SHORT]: FLMD0 = H level</li> <li>JP41[OPEN]: FLMD0               <ul style="list-style-type: none"> <li>controlled by debugger or programming tool if a tool is connected via CN4</li> <li>GND, if no tool connected</li> </ul> </li> </ul>
JP39	FLMD1 pin level <ul style="list-style-type: none"> <li>JP39[SHORT]: FLMD1 = H level               <ul style="list-style-type: none"> <li>Port function of port P6_13 can be used</li> </ul> </li> <li>JP39[OPEN]: FLMD1 = L level               <ul style="list-style-type: none"> <li>JP39 must be open if Serial Programming Mode is used by a debugger or flash programming tool, that is connected to the board</li> </ul> </li> </ul>
JP40	FLMD2 pin level <ul style="list-style-type: none"> <li>JP40[2-1]: FLMD2 = H level</li> <li>JP40[2-3]: FLMD2 = GND</li> </ul>

#### CAUTION

Be careful in configuration of the operation mode related pins. The wrong configuration and operation of the device outside of its specification can cause irregular behavior of the device and long-term damage cannot be excluded. Be sure to check the corresponding Hardware User's Manual for details, which modes are specified for the used device.

#### Note

In most cases the 'normal operating mode' of the device will be used. This mode is for execution of the user program. The on-chip debug functions also use this mode.

To select the 'normal operating mode' of the device, the FLMD0 pin must be pulled low. To do so, remove the jumper JP41.

All other jumpers related to the mode selection can be left open.

The values for the resistors R19 and R88 were modified from version D019381\_06\_V0100 to version D019381\_06\_V0120



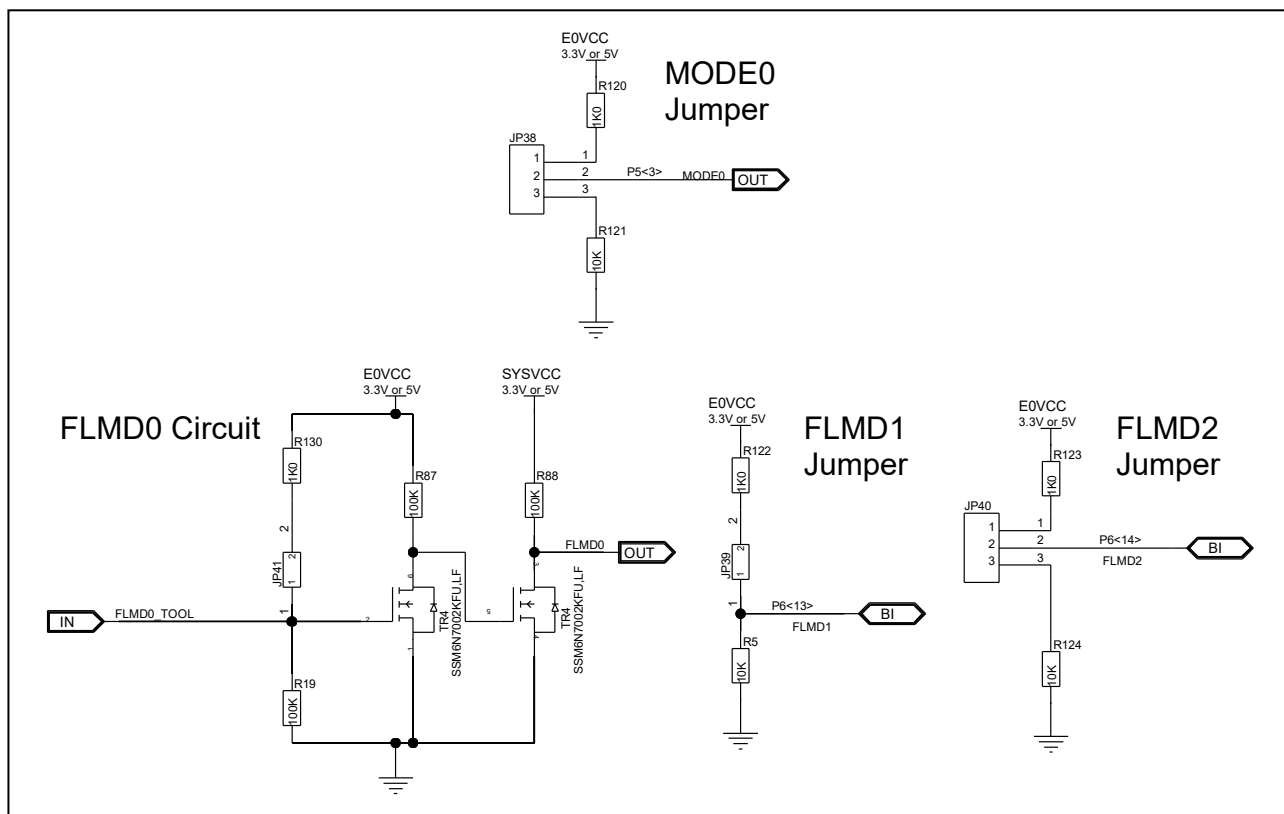


Figure 6.1 Operating mode selection on board version D019381\_06\_V0100

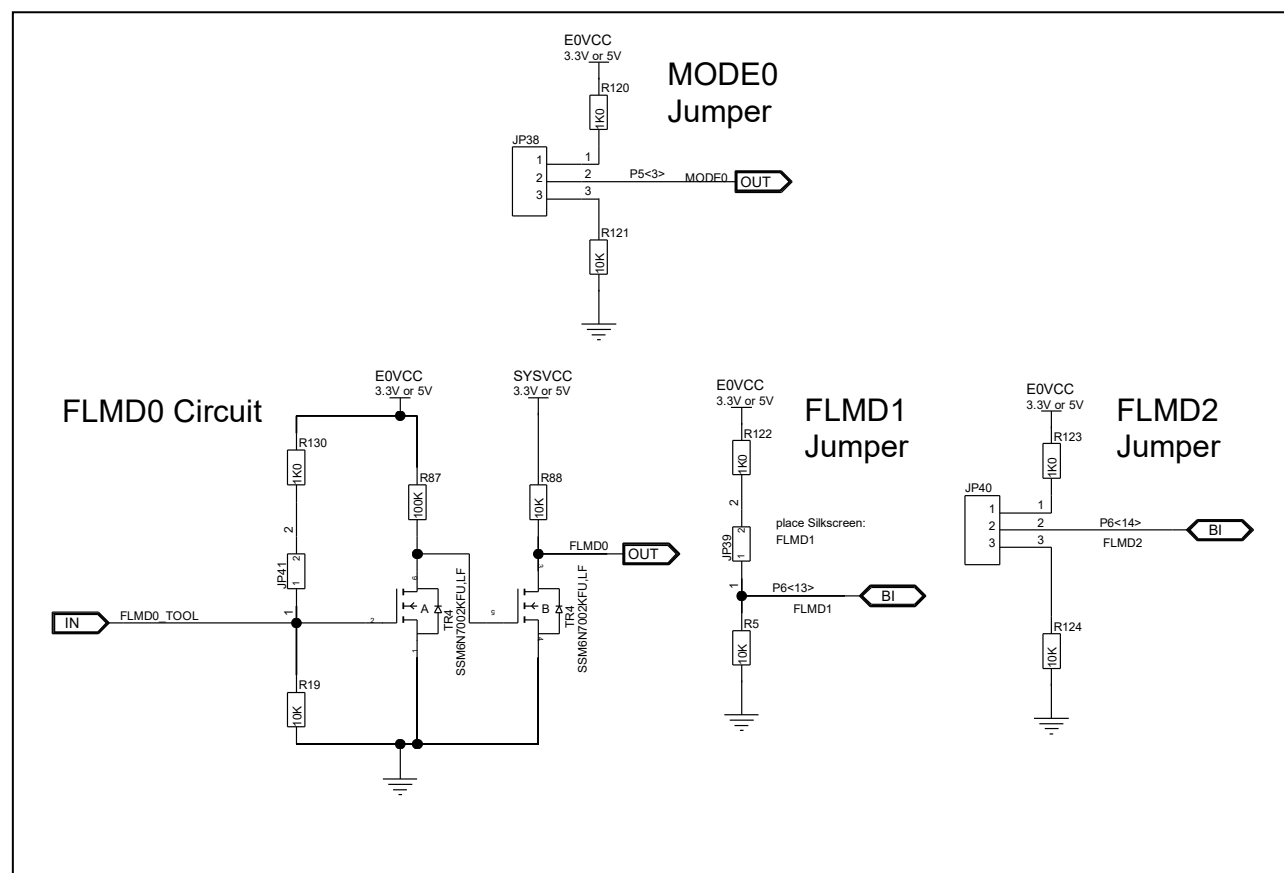


Figure 6.2 Operating mode selection on board version D019381\_06\_V0120

## 6.2 RESET

The SW1 is used to issue a RESET to the device.

The SW1 toggle switch allows to activate the RESET in two different ways:

- SW1 in left '5-4 (ON)' position: temporary reset  
Releasing the switch's lever returns the switch to its middle 'OFF' position and thus releases the reset.
- SW1 in right '5-6 ON' position: permanent reset  
For reset release the switch has to be moved back manually to its middle 'OFF' position.

The left and right switch position is defined from the side of the part number marking, which is highlighted with a red arrow in *Figure 6.4 Operation of RESET switch*.

The lighted red LED13 indicates that SW1 is "on", i.e. in position '5-4 (ON)' or '5-6 ON'.

### Note

LED13 does not light up when RESET is asserted by any other means than SW1.

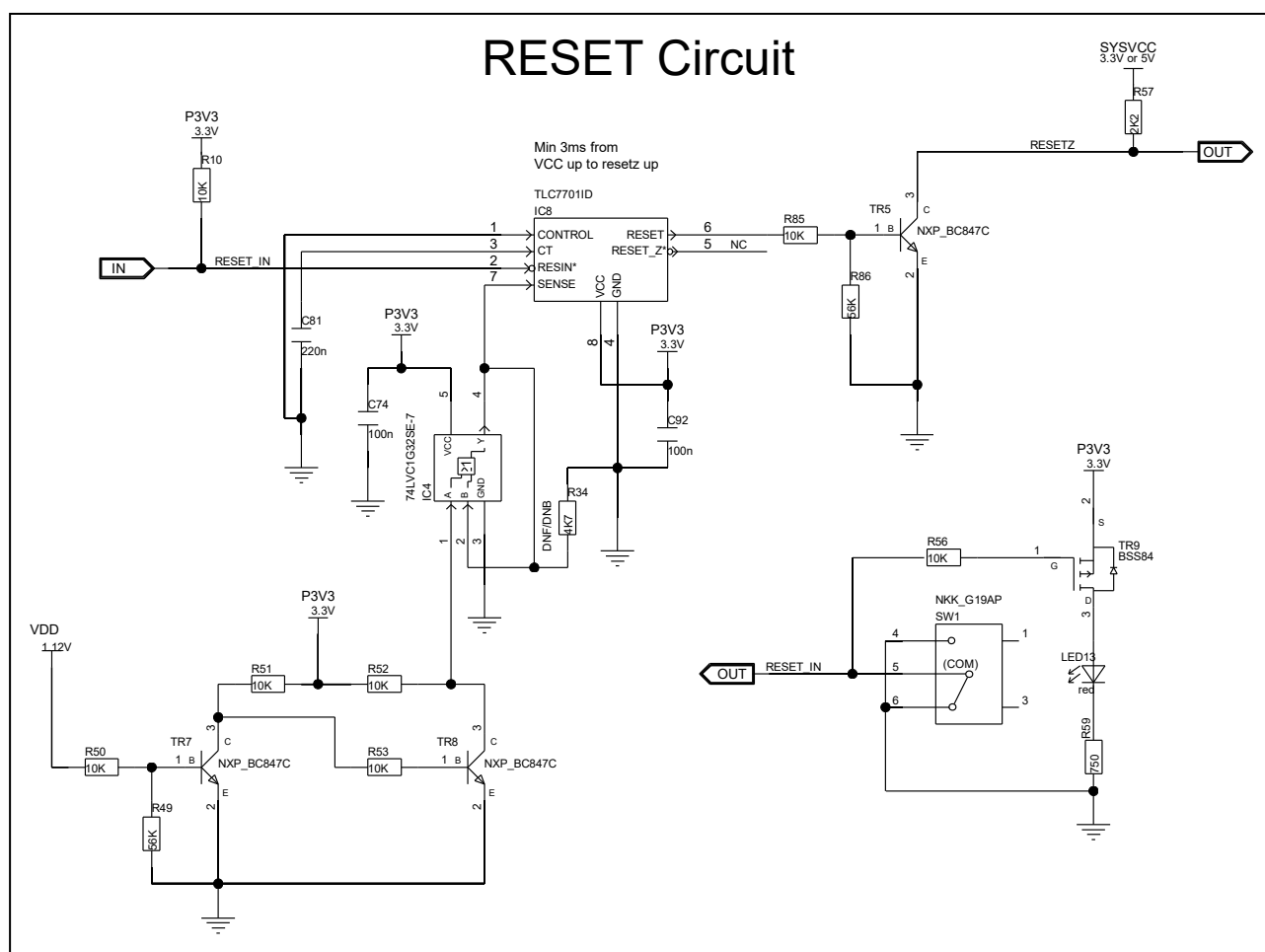


Figure 6.3 Reset circuit

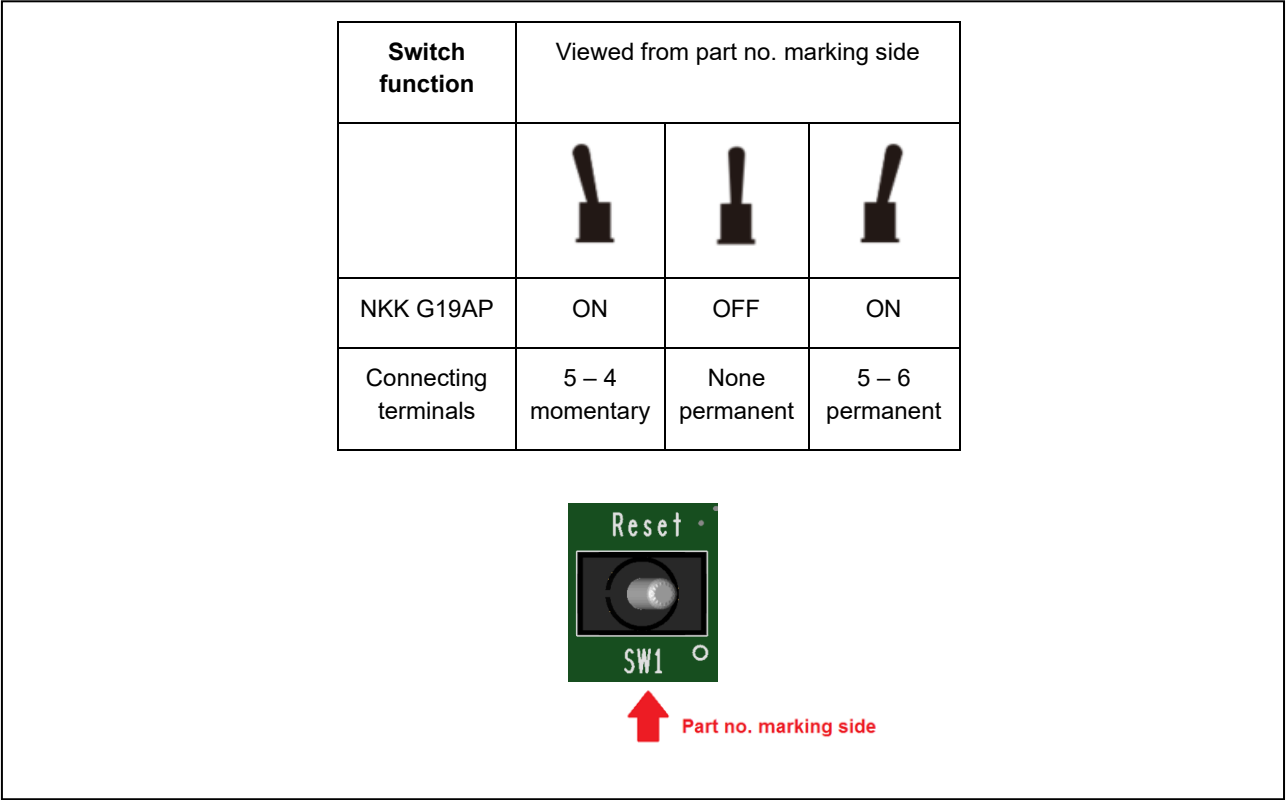


Figure 6.4 Operation of RESET switch

### 6.3 Signaling LEDs

Eight LEDs are provided to allow visual observation of the output state of device port pins.

Device pins AP2\_8, AP2\_9 and P4\_5 to P4\_10 are connected to the odd pins of the pin header CN7, while the LEDs 2 to 9 are connected to the even CN7 pins.

Thus, the LEDs can be either connected to

- the device pins AP2\_8, AP2\_9 and P4\_5 to P4\_10 by closing the connection on CN7 using a jumper, or
- any device pin by connecting directly with the even CN7 pins using a separate cable.

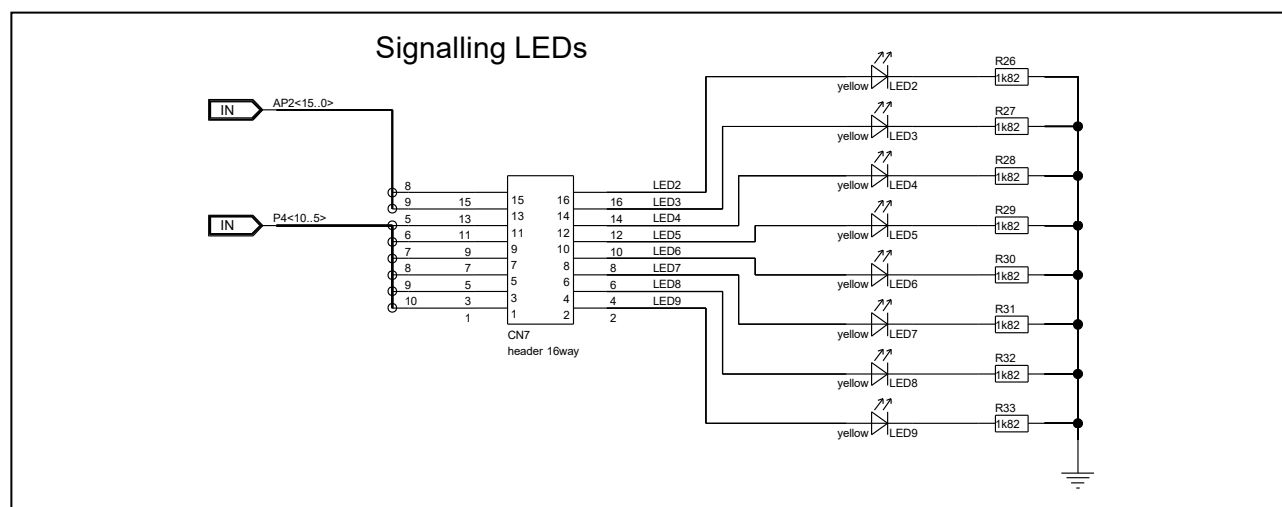


Figure 6.5 Signalling LED circuit

## 6.4 Pull-Up/Pull-Down Pin Header

The Pull-up/Pull-down pin header CN12 provides fixed voltage levels at its pins, that can be used to pull-up/pull-down a signal on the board or the device, respectively, by connecting a CN12 pin to the signal via a separate cable.

The CN12 pins have following pull-up or pull-down voltage levels:

- all even numbered pins are connected to L level, i.e. to GND
- odd numbered pins 1, 3, 5, 7, 9 can be connected to
  - 5.0 V, if JP25[2-1] is set
  - 3.3 V, if JP25[2-3] is set
- odd numbered pins 11, 13, 15, 17, 19 can be connected to
  - 5.0 V, if JP15[2-1] is set
  - 3.3 V, if JP15[2-3] is set

Refer to *7.3 Pull-Up/Pull-Down Pin Header CN12* for CN12 details.

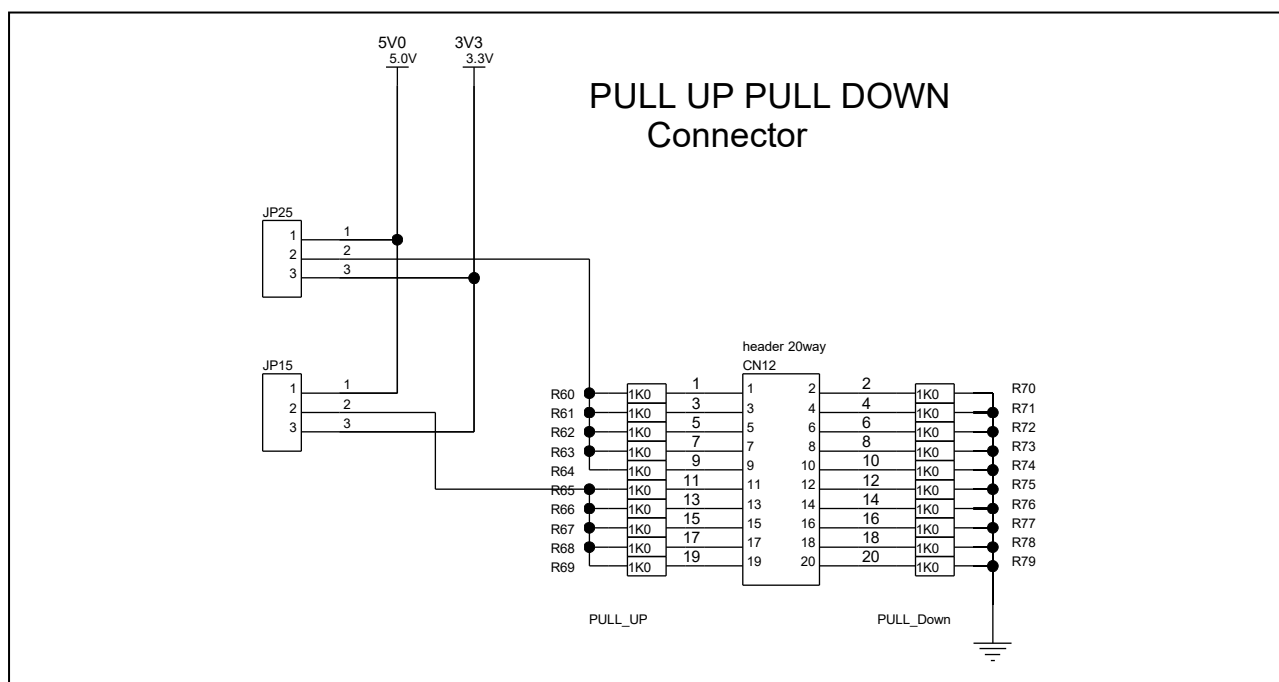


Figure 6.6 Pull-up / pull-down circuit

## 7. Connectors

### 7.1 Connectors to the Main Board CN1 to CN3

Three connectors (CN1 to CN3) are available to connect the piggyback board to a Main Board.

The signals of each connector are summarized in the following tables.

#### Note

Regarding the function on the Main Board, please refer to the User's Manual of any supported Main Board. Refer to *1.2 Supported Main Boards* for a list of supported Main Boards.

#### 7.1.1 Main Board Connector CN1

Table 7.1 Main board connector CN1

Pin	Main Board function	Piggyback board device port
1	VDDA	—
3	VDDA	—
5	RESET	RESETZ
7	—	—
9	INT0	P10_12
11	INT2	P3_7
13	—	—
15	UART0TX	P6_5
17	UART0RX	P6_14
19	LIN0TX	P4_8
21	LIN0RX	P4_9
23	IIC0SCL	P10_1
25	IIC0SDA	P10_0
27	CAN0TX	P6_14
29	CAN0RX	P6_13
31	SENT0RX	P20_2
33	SENT0SPCO	P6_14
35	PSI5SRX0	P3_6
37	PSI5STX0	P3_7

Pin	Main Board function	Piggyback board device port
2	VDDA	—
4	VDDA	—
6	NMI	P4_7
8	—	—
10	INT1	P20_5
12	INT3	P4_5
14	—	—
16	UART1TX	P6_15
18	UART1RX	P6_9
20	LIN1TX	P2_5
22	LIN1RX	P2_4
24	IIC1SCL	P24_9
26	IIC1SDA	P24_8
28	CAN1TX	P4_9
30	CAN1RX	P4_10
32	SENT1RX	P20_3
34	SENT1SPCO	P20_9
36	PSI5RX0	P5_4
38	PSI5TX0	P5_6

Table 7.1 Main board connector CN1 (cont'd)

Pin	Main Board function	Piggyback board device port
39	PSI5SCLK0	–
41	FLX0TX	P20_7
43	FLX0RX	P20_2
45	FLX1TX	P20_6
47	FLX1RX	P20_3
49	–	–
51	ETH0MDIO	P20_3
53	ETH0RXD0	P10_3
55	ETH0RXD1	P10_4
57	ETH0RXD2	P10_5
59	ETH0RXD3	P10_6
61	ETH0RXCLK	P10_2
63	ETH0RXER	P10_0
65	ETH0CRSDV	P20_7
67	ETH0RXDV	P10_7
69	ETH0RESET	P10_10
71	–	–
73	USB0UDMF	–
75	USB0UDPF	–
77	–	–
79	–	–
81	–	–
83	–	–
85	DIGIO_0	P21_0
87	DIGIO_2	P21_2
89	DIGIO_4	P6_7
91	DIGIO_6	AP4_0
93	DIGIO_8	AP4_2
95	DIGIO_10	P10_8
97	DIGIO_12	P10_10

Pin	Main Board function	Piggyback board device port
40	–	–
42	FLX0EN	P20_5
44	FLXSTPWT	P20_4
46	FLX1EN	P20_8
48	FLXCLK	P10_8
50	–	–
52	ETH0MDC	P20_6
54	ETH0TXD0	P20_9
56	ETH0TXD1	P20_10
58	ETH0TXD2	P20_12
60	ETH0TXD3	P20_13
62	ETH0TXCLK	P10_1
64	ETH0TXER	P20_8
66	ETH0TXEN	P20_14
68	ETH0COL	–
70	ETH0LINK	P20_1
72	–	–
74	USB0UDMH	–
76	USB0UDPH	–
78	–	–
80	–	–
82	–	–
84	–	–
86	DIGIO_1	P21_1
88	DIGIO_3	P6_6
90	DIGIO_5	P6_8
92	DIGIO_7	AP4_1
94	DIGIO_9	AP4_3
96	DIGIO_11	P10_9
98	DIGIO_13	P10_11

Table 7.1 Main board connector CN1 (cont'd)

Pin	Main Board function	Piggyback board device port
99	DIGIO_14	P10_12
101	—	—
103	MUX0	—
105	MUX2	—
107	ADC0	AP0_0
109	ADC2	—
111	ADC4	—
113	ADC6	—
115	VDDIOF	—
117	VDDDB	—
119	VDDDB	—
121	GND	—
123	GND	—
125	GND	—
127	GND	—

Pin	Main Board function	Piggyback board device port
100	DIGIO_15	P10_13
102	—	—
104	MUX1	—
106	—	—
108	ADC1	AP0_1
110	ADC3	—
112	ADC5	—
114	ADC7	—
116	VDDIOF	—
118	VDDDB	—
120	VDDDB	—
122	GND	—
124	GND	—
126	GND	—
128	GND	—

### 7.1.2 Main Board Connector CN2

Table 7.2 Main board connector CN2

Pin	Function	Device port
1	CAN2TX	P24_8
3	CAN2RX	P24_9
5	CAN4TX	P4_6
7	CAN4RX	P4_7
9	LIN2TX	P2_0
11	LIN2RX	P2_1
13	LIN4TX	P6_12
15	LIN4RX	P6_15
17	LIN6TX	P2_7
19	LIN6RX	P2_6
21	LIN8TX	P5_4

Pin	Function	Device port
2	CAN3TX	P2_4
4	CAN3RX	P2_5
6	CAN5TX	P4_11
8	CAN5RX	P4_12
10	LIN3TX	P4_14
12	LIN3RX	P4_15
14	LIN5TX	P4_7
16	LIN5RX	P4_6
18	LIN7TX	P2_14
20	LIN7RX	P2_13
22	LIN9TX	P5_3



Table 7.2 Main board connector CN2 (cont'd)

Pin	Function	Device port
23	LIN8RX	P5_6
25	LIN10TX	P6_5
27	LIN10RX	P6_14
29	LIN12TX	–
31	LIN12RX	–
33	LIN14TX	–
35	LIN14RX	–
37	–	–
39	CAN12TX	–
41	CAN12RX	–
43	CAN14TX	–
45	CAN14RX	–
47	CAN6TX	P4_14
49	CAN6RX	P4_15
51	CAN8TX	P10_6
53	CAN8RX	P10_5
55	CAN10TX	P24_6
57	CAN10RX	P24_7
59	–	–
61	LIN16TX	–
63	LIN16RX	–
65	LIN18TX	–
67	LIN18RX	–
69	LIN20TX	–
71	LIN20RX	–
73	LIN22TX	–
75	LIN22RX	–
77	–	–
79	SFMA0CLK	P17_5
81	SFMA0IO0	P17_3

Pin	Function	Device port
24	LIN9RX	P5_2
26	LIN11TX	P6_15
28	LIN11RX	P6_9
30	LIN13TX	–
32	LIN13RX	–
34	LIN15TX	–
36	LIN15RX	–
38	–	–
40	CAN13TX	–
42	CAN13RX	–
44	CAN15TX	–
46	CAN15RX	–
48	CAN7TX	P2_13
50	CAN7RX	P2_14
52	CAN9TX	P24_4
54	CAN9RX	P24_5
56	CAN11TX	–
58	CAN11RX	–
60	–	–
62	LIN17TX	–
64	LIN17RX	–
66	LIN19TX	–
68	LIN19RX	–
70	LIN21TX	–
72	LIN21RX	–
74	LIN23TX	–
76	LIN23RX	–
78	–	–
80	SFMA0SSL	P17_4
82	SFMA0IO1	P17_2

Table 7.2 Main board connector CN2 (cont'd)

Pin	Function	Device port
83	SFMA0IO2	P17_1
85	–	–
87	MMCA0CLK	P24_4
89	MMCA0DAT0	P24_6
91	MMCA0DAT2	P24_8
93	MMCA0DAT4	P24_10
95	MMCA0DAT6	P24_12
97	–	–
99	ETH1MDIO	–
101	ETH1RXD0	–
103	ETH1RXD1	–
105	ETH1RXD2	–
107	ETH1RXD3	–
109	ETH1RXCLK	–
111	ETH1RXER	–
113	ETH1CRSDV	–
115	ETH1RXDV	–
117	ETH1RESET	–
119	–	–
121	GND	–
123	GND	–
125	GND	–
127	GND	–

Pin	Function	Device port
84	SFMA0IO3	P17_0
86	–	–
88	MMCA0CMD	P24_5
90	MMCA0DAT1	P24_7
92	MMCA0DAT3	P24_9
94	MMCA0DAT5	P24_11
96	MMCA0DAT7	P24_13
98	–	–
100	ETH1MDC	–
102	ETH1TXD0	–
104	ETH1TXD1	–
106	ETH1TXD2	–
108	ETH1TXD3	–
110	ETH1TXCLK	–
112	ETH1TXER	–
114	ETH1TXEN	–
116	ETH1COL	–
118	ETH1LINK	–
120	–	–
122	GND	–
124	GND	–
126	GND	–
128	GND	–

### 7.1.3 Main Board Connector CN3

Table 7.3 Main board connector CN3

Pin	Function	Device port
1	CSI0CS0	P2_14
3	CSI0CS1	P10_14
5	CSI0CS2	P4_13

Pin	Function	Device port
2	CSI0CLK	P2_12
4	CSI0SI	P2_11
6	CSI0SO	P2_13

Table 7.3 Main board connector CN3 (cont'd)

Pin	Function	Device port
7	CSI0CS3	P6_11
9	–	–
11	–	–
13	PSI5SRX1	P6_13
15	PSI5STX1	P6_14
17	PSI5SCLK1	P6_15
19	–	–
21	CSI1CS2	P17_0
23	–	–
25	–	–
27	–	–
29	CSI1SCLK	P10_3
31	–	–
33	–	–
35	–	–
37	–	–
39	–	–
41	–	–
43	–	–
45	–	–
47	–	–
49	–	–
51	–	–
53	–	–
55	AD1_0	AP2_0
57	AD1_2	AP2_2
59	AD1_4	AP2_4
61	AD1_6	AP2_6
63	PWM0	P2_1
65	PWM2	P2_3

Pin	Function	Device port
8	–	–
10	CSI1CS1	P10_11
12	–	–
14	PSI5RX1	P5_2
16	PSI5TX1	P5_3
18	–	–
20	–	–
22	CSI1CS3	P17_1
24	CSI1CS0	P2_0
26	DIGIO_24	P17_5
28	CSI1SO	P10_2
30	CSI1SI	P10_4
32	–	–
34	–	–
36	–	–
38	–	–
40	–	–
42	–	–
44	–	–
46	–	–
48	–	–
50	–	–
52	–	–
54	–	–
56	AD1_1	AP2_1
58	AD1_3	AP2_3
60	AD1_5	AP2_5
62	AD1_7	AP2_7
64	PWM1	P2_2
66	PWM3	P2_4

Table 7.3 Main board connector CN3 (cont'd)

Pin	Function	Device port
67	PWM4	P2_5
69	PWM6	P2_7
71	DIGIO16	AP0_0
73	DIGIO18	AP0_2
75	DIGIO20	AP0_4
77	DIGIO22	AP0_6
79	ENC0	P10_8
81	—	—
83	—	—
85	—	—
87	—	—
89	—	—
91	—	—
93	—	—
95	—	—
97	—	—
99	—	—
101	—	—
103	—	—
105	—	—
107	—	—
109	—	—
111	—	—
113	—	—
115	—	—
117	—	—
119	—	—
121	GND	—
123	GND	—
125	GND	—

Pin	Function	Device port
68	PWM5	P2_6
70	PWM7	P2_8
72	DIGIO17	AP0_1
74	DIGIO19	AP0_3
76	DIGIO21	AP0_5
78	DIGIO23	AP0_7
80	ENC1	P10_9
82	—	—
84	—	—
86	—	—
88	—	—
90	—	—
92	—	—
94	—	—
96	—	—
98	—	—
100	—	—
102	—	—
104	—	—
106	—	—
108	—	—
110	—	—
112	—	—
114	—	—
116	—	—
118	—	—
120	—	—
122	GND	—
124	GND	—
126	GND	—

Table 7.3 Main board connector CN3 (cont'd)

Pin	Function	Device port
127	GND	–

Pin	Function	Device port
128	GND	–

## 7.2 Debug Connector CN4

Table 7.4 On-chip debug connector CN4

Pin	Function	Device port
1	TDCK / LPDCLK / FPCK	JP0_2
3	TRSTZ	
5	TDO / LPDO / FPD	JP0_1
7	TDI / LPDIO / FPD	JP0_0
9	TMS	JP0_3
11	RDY / LPDCLKOUT	JP0_5
13	RESETZ	

Pin	Function	Device port
2	GND	
4	FLMD0_TOOL_c	FLMD0_TOOL
6	–	
8	E0VCC	
10	–	
12	GND	
14	GND	

## 7.3 Pull-Up/Pull-Down Pin Header CN12

Table 7.5 Pull-up/pull-down header CN12

Pin	Function
1	fixed H level, depends on JP25: <ul style="list-style-type: none"> <li>JP25[2-1]: 5.0 V</li> <li>JP25[2-3]: 3.3 V</li> </ul>
3	
5	
7	
9	
11	fixed H level, depends on JP15: <ul style="list-style-type: none"> <li>JP15[2-1]: 5.0 V</li> <li>JP15[2-3]: 3.3 V</li> </ul>
13	
15	
17	
19	

Pin	Function
2	fixed L level
4	
6	
8	
10	
12	
14	
16	
18	
20	

## 7.4 Device Ports Connectors CN13 to CN16

The device port connectors enable easy connection to almost all ports of the device.

### CAUTION

The pin headers are directly connected to the pins, therefore special care must be taken to avoid any electrostatic or other damage to the device.

#### 7.4.1 Device Ports Connector CN13

Table 7.6 Device ports connector CN13

Pin	Device pin	Device port	Pin	Device pin	Device port
1	45	A0VREFH	2	46	GND
3	47	AP0_0	4	48	AP0_1
5	49	AP0_2	6	50	AP0_3
7	51	AP0_4	8	52	AP0_5
9	53	AP0_6	10	54	AP0_7
11	55	AP0_8	12	56	AP0_9
13	57	AP0_10	14	58	AP0_11
15	59	AP0_12	16	60	AP0_13
17	61	VDD	18	62	P24_4
19	63	P24_5	20	64	P24_6
21	65	VDD	22	66	P24_7
23	67	P24_8	24	68	E2VCC
25	69	P4_5	26	70	P4_6
27	71	P24_9	28	72	P24_10
29	73	P4_7	30	74	P24_11
31	75	P4_8	32	76	VDD
33	77	P24_12	34	78	P4_9
35	79	P24_13	36	80	P4_10
37	81	E0VCC	38	82	VDD
39	83	P4_11	40	84	P4_12
41	85	P4_13	42	86	P4_14
43	87	P4_15	44	88	P3_5

## 7.4.2 Device Ports Connector CN14

Table 7.7 Device ports connector CN14

Pin	Device pin	Device port	Pin	Device pin	Device port
1	1	P20_14	2	2	P10_0
3	3	P10_1	4	4	P10_2
5	5	P10_3	6	6	P10_4
7	7	P10_5	8	8	P10_6
9	9	VDD	10	10	P10_7
11	11	E1VCC	12	12	P10_8
13	13	P17_6	14	14	P10_9
15	15	P10_10	16	16	P10_11
17	17	P10_12	18	18	VDD
19	19	P17_5	20	20	VCC
21	21	P10_13	22	22	P10_14
23	23	P17_0	24	24	P17_1
25	25	P17_2	26	26	P17_3
27	27	P17_4	28	28	VDD
29	29	AP2_13	30	30	AP2_11
31	31	AP2_10	32	32	AP2_9
33	33	AP2_8	34	34	AP2_7
35	35	AP2_6	36	36	AP2_5
37	37	AP2_4	38	38	AP2_3
39	39	AP2_2	40	40	AP2_1
41	41	AP2_0	42	42	AP2_12
43	43	A1VREFH	44	44	GND

## 7.4.3 Device Ports Connector CN15

Table 7.8 Device ports connector CN15

Pin	Device pin	Device port	Pin	Device pin	Device port
1	89	P6_11	2	90	GND
3	91	A2VREFH	4	92	AP4_4
5	93	AP4_0	6	94	AP4_3
7	95	AP4_1	8	96	AP4_2
9	97	P6_5	10	98	P6_6
11	99	P6_0	12	100	VDD
13	101	P6_8	14	102	P6_7
15	103	P6_9	16	104	P6_12
17	105	P3_6	18	106	P3_7
19	107	E0VCC	20	108	P6_10
21	109	VDD	22	110	P6_15
23	111	P6_13	24	112	P6_14
25	113	JP0_5	26	114	JP0_3
27	115	JP0_2	28	116	JP0_1
29	117	JP0_0	30	118	TRSTZ
31	119	RESETZ	32	120	FLMD0
33	121	VDD	34	122	X2_C *
35	123	GND	36	124	X1_C *
37	125	SYSVCC	38	126	AWOVCL
39	127	PWRCTL	40	128	VMONOUTZ
41	129	P5_2	42	130	E0VCC
43	131	P5_4	44	132	P5_3

Note \* By default these signals are not connected to CN15 in order to minimize signal interference. If required they can be connected via 0  $\Omega$  resistors R3 and R4.



## 7.4.4 Device Ports Connector CN16

Table 7.9 Device ports connector CN16

Pin	Device pin	Device port
1	133	VDD
3	135	P2_1
5	137	P2_3
7	139	P2_4
9	141	P2_6
11	143	GND
13	145	SVRNGATE
15	147	SVRDRVCC
17	149	P2_8
19	151	E0VCC
21	153	P2_14
23	155	VDD
25	157	P20_1
27	159	P20_3
29	161	P20_5
31	163	P20_7
33	165	P20_6
35	167	P20_8
37	169	P21_1
39	171	P21_2
41	173	P20_13
43	175	GND

Pin	Device pin	Device port
2	134	P5_6
4	136	P2_2
6	138	P2_0
8	140	P2_5
10	142	SVRAVCC
12	144	GND
14	146	SVRPGATE
16	148	P2_7
18	150	P2_11
20	152	P2_13
22	154	P2_12
24	156	VDD
26	158	P20_2
28	160	P20_4
30	162	E1VCC
32	164	P21_0
34	166	VDD
36	168	P20_9
38	170	P20_10
40	172	P20_12
42	174	VCC
44	176	ERROROUT_M

## 8. Jumper Configuration Examples

Several functions of the board can be configured via jumpers.

The board is shipped without any jumpers set.

For a complete list of jumpers refer to *2.1 Jumper Overview*.

For jumper settings related to the device operation mode, refer to *6.1 Operation Mode Selection*.

The following sections show some jumper settings, that allow to operate the piggyback board in different power supply configurations.

### 8.1 Stand-Alone Operation with Power Supply by Debugger

Basically the piggyback board can solely be powered by a connected debugger. Please make sure the debug tool is able to provide sufficient current on the power supply rails in order to operate the board in a useful manner.

Due to the limited current capability of Renesas' E2 Emulator, powering the board only via this debugger is not feasible.

In case of using another debug tool check its specification whether powering the piggyback board with the tool is possible.

## 8.2 Configuration Examples

### 8.2.1 General Settings




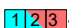
All of the following board configurations are based on these conditions:

- Normal device operation mode (JP41[OPEN]: FLMD0 = L).
  - When using Serial Programming Mode by a debugger or programming tool, that is connected to the board, make sure to open jumper JP39 (JP39[OPEN]: FLMD1 = GND).
- All voltages for all functions are activated.
- Current measurements are not carried out, hence JP4, JP5, JP30 and JP31 are set.
- Clock supply: assuming one of the resonators, coming with the board, are plugged into X1 socket.
- For connection to external power supplies the 'banana-type' connectors CN8 (GND), CN9 (+5.0 V) and CN10 (+3.3 V) are assembled on the board.
- If also the core supply voltage of 1.12 V will be supplied from an external power supply the connector CN11 (included in the package) must be assembled on the board.

### 8.2.2 Jumper Indicators

- The **green** jumper JP41 for FLMD0 must always be open for a 'normal' (user mode and debug) operation of the device.
- The **red** jumpers are related to the power supply configuration.

Following jumper symbols are used:

- : Jumper must not be set.
- : Jumper must be set in the indicated position, in this case position [2-3]
- : Jumper can be set to position [1-2] or position [2-3]
- : Jumper with optional setting. The red setting [2-3] is the default setting. The blue setting [1-2] is the optional setting.

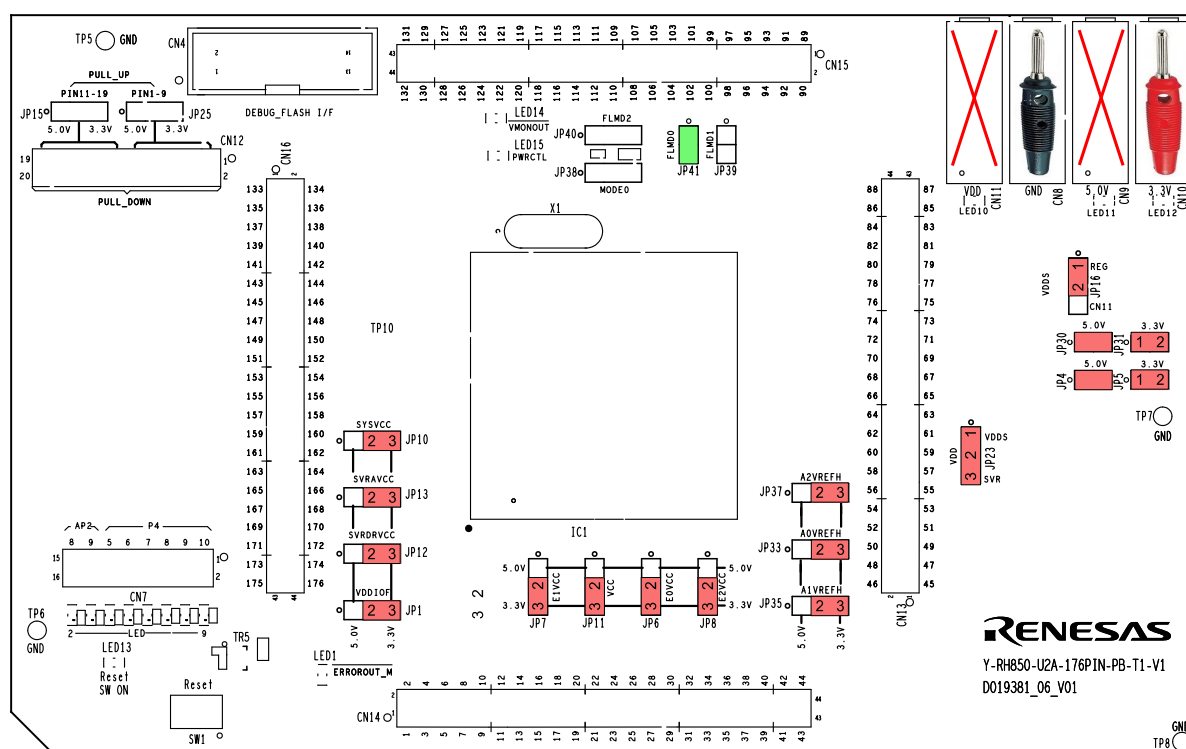
#### Note

The pin 1 of a jumper can be identified by

- a small circle near the jumper
- a square soldering pad.

This example enables to operate the board with only the 3.3 V external power supply. Since no 5 V voltage is available, all I/O ports can only use 3.3 V.

- Refer to 3.3 Device Core Voltage (VDD) Selection for further details about VDD voltage.



**Figure 8.1 Stand-alone operation with single external power supply 3.3V**

### 8.2.4 Stand-Alone Operation with Single External Power Supply 5.0 V: Minimum Configuration 2

This example enables to operate the board with only the 5.0 V external power supply. Since no 3.3 V voltage is available, all I/O ports can only use 5.0 V.

- CN8: GND connection
  - CN9: 5.0 V
  - CN10: not connected, no 3.3 V
    - jumpers JP1, JP6 to JP8, JP10 to JP13, JP33, JP35 and JP37 are set to 5.0 V position [1-2]
  - CN11: not connected, no IN<sub>1</sub>v12
    - VDD from SVR\_OUTPUT (JP23[2-3]) from on-chip Switching Voltage Regulator
- Refer to 3.3 Device Core Voltage (VDD) Selection for further details about VDD voltage.

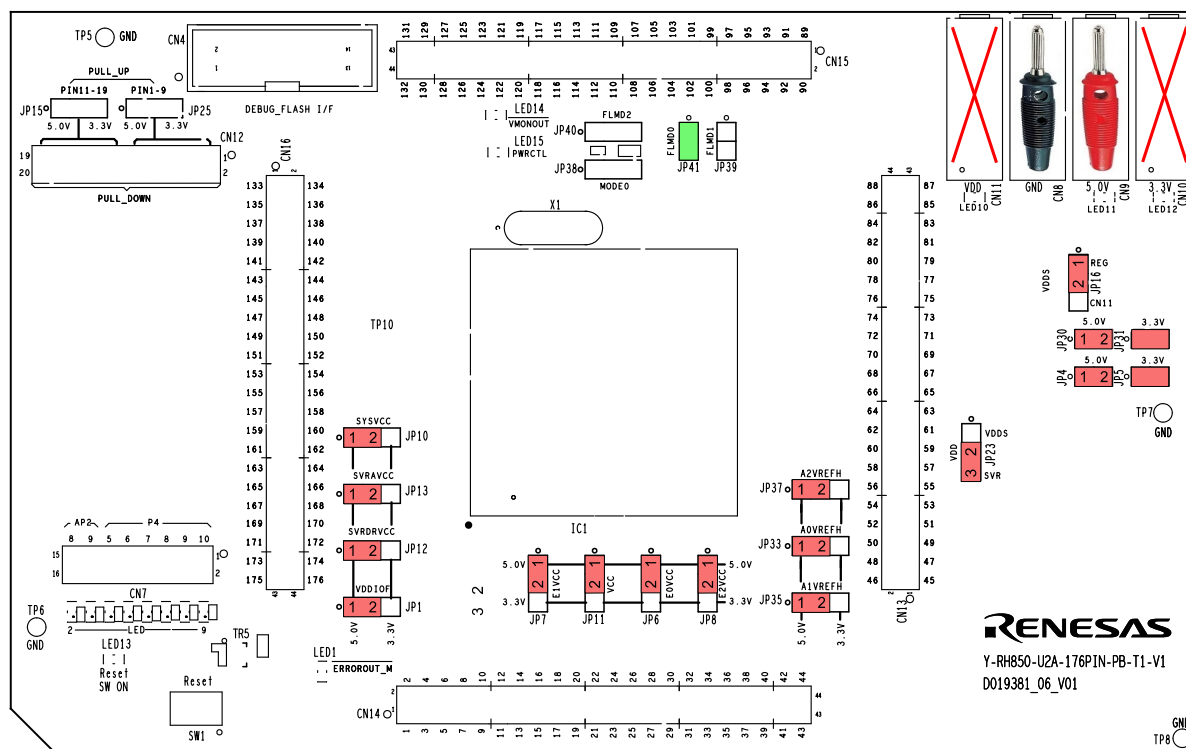


Figure 8.2 Stand-alone operation with single external power supply 5.0V

### 8.2.5 Stand-Alone Operation with All External Power Supplies: Maximum Configuration

This example assumes all external power supplies are connected and used.

- CN8: GND connection
  - CN9: 5 V
  - CN10: 3.3V
    - select desired 3.3 V/5.0 V via jumpers JP1, JP6 to JP8, JP10 to JP13, JP33, JP35 and JP37
  - CN11: 1.12 V (IN\_1v12)
    - JP16[2-3], JP23[2-1]: use IN\_1v12 for VDD voltage
- Refer to 3.3 Device Core Voltage (VDD) Selection for further details about VDD voltage.

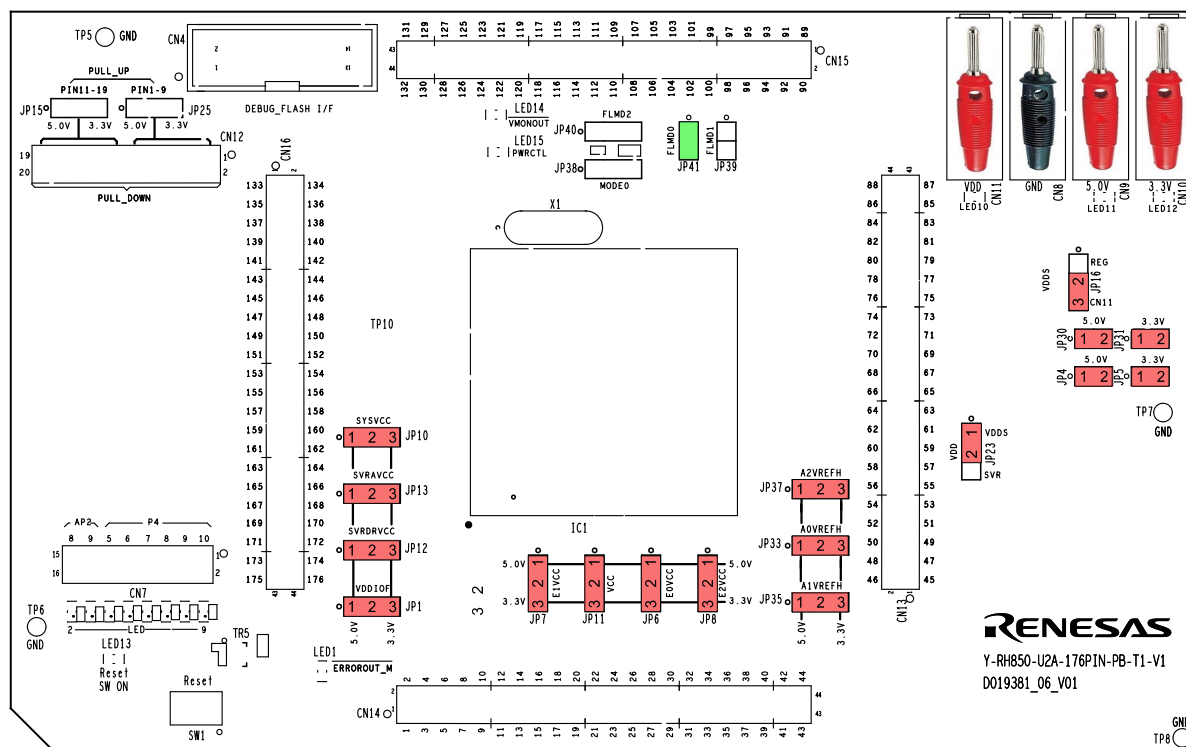


Figure 8.3 Stand-alone operation with maximum external power supply

### 8.2.6 Operation on the Main Board: No External Supply

This example assumes the piggyback board is plugged onto a Main Board, which provides 3.3 V and 5.0 V.

Do not supply the 5V (CN9) and 3.3V (CN10) voltage directly to the piggyback board

- CN8 to CN11: not connected, no external 5.0 V, 3.3 V, 1.12 V  
Select desired 3.3 V/5.0 V via jumpers JP1, JP6 to JP8, JP10 to JP13, JP33, JP35 and JP37
  - VDD supply:
    - JP16[2-1]: use reg\_vcc\_VDD from on-board voltage regulator for supply of VDD voltage
    - VDD from reg\_vcc\_VDD (JP23[2-1]) or SVR\_OUTPUT (JP23[2-3]) from on-chip Switching Voltage Regulator
- Refer to 3.3 Device Core Voltage (VDD) Selection for further details about VDD voltage.

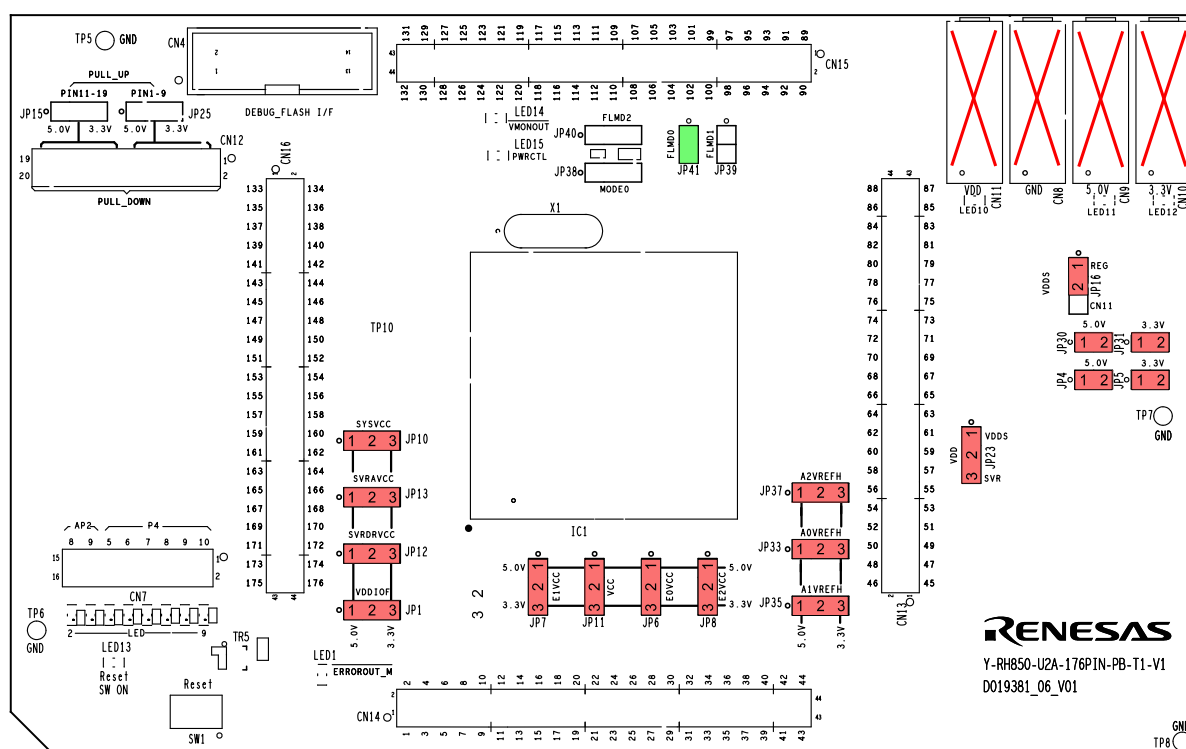


Figure 8.4 Main board operation without external power supply

#### Note

This configuration still allows to utilize an external IN\_1v12 voltage (connected to CN8, CN11) as the source for VDD voltage. In this case set JP16[2-3] and JP23[2-1].

#### CAUTION

Do not supply 5V (CN9) and 3.3V (CN10) directly to the piggyback board if these voltages are already supplied by the main board.

## 9. Precautions

### 9.1 Power-Off Sequence

A dedicated sequence needs to be applied when power supply to the board is turned off.

Please follow the below sequence:

1. At first turn the RESET switch SW1 into '5-6 ON' position, so that RESET is permanently asserted.  
Alternatively keep SW1 manually in '5-4 (ON)' position.
2. Turn off the board power supply.
3. After the power supply has shut down, release RESET by returning SW1 into the 'OFF' position.

For details how to apply a RESET, please refer to section *6.2 RESET*.

### 9.2 CAN0RX is Shared with FLASH Programmer Signal FLMD1

When using this product plugged into a motherboard where CAN0 is connected to the CAN-transceiver the FLASH programmer will not work.

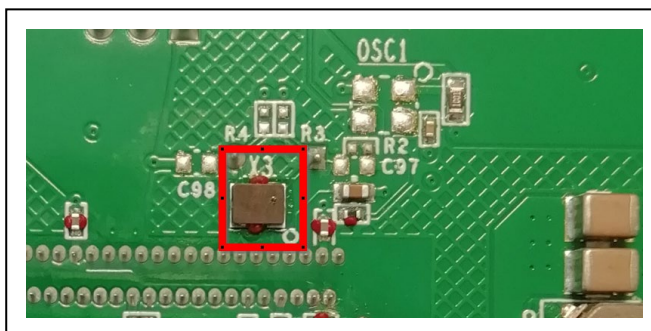
This is because the CAN0RX function is shared with the FLMD1 function on the same device PIN.

Most CAN-transceiver are driving the RX line actively and the FLASH programmer then is not able to change signal level as required for flashing.

### 9.3 Assembly of Oscillator X3

On piggyback boards for RH850/U2A 176pin the oscillator X3 (located at the bottom side of the pcb, see figure 9.1) may be wrongly populated with a 16MHz ceramic resonator.

This wrongly mounted resonator works in parallel to the 40MHz ceramic resonator mounted in socket X1 on the upper side of the pcb.



**Figure 9.1 Ceramic resonator mounted for oscillator X3**

The intended oscillator source for RH850/U2A is the 40MHz ceramic resonator mounted in socket X1. Experience shows that the 16MHz resonator on the lower side of the pcb does not disturb the clock signal of the resonator on top of the pcb.



If you experience problems with the oscillator (e.g. processor running at the wrong operating frequency or problems with the oscillation build-up at power on) the ceramic resonator on X3 should be desoldered.

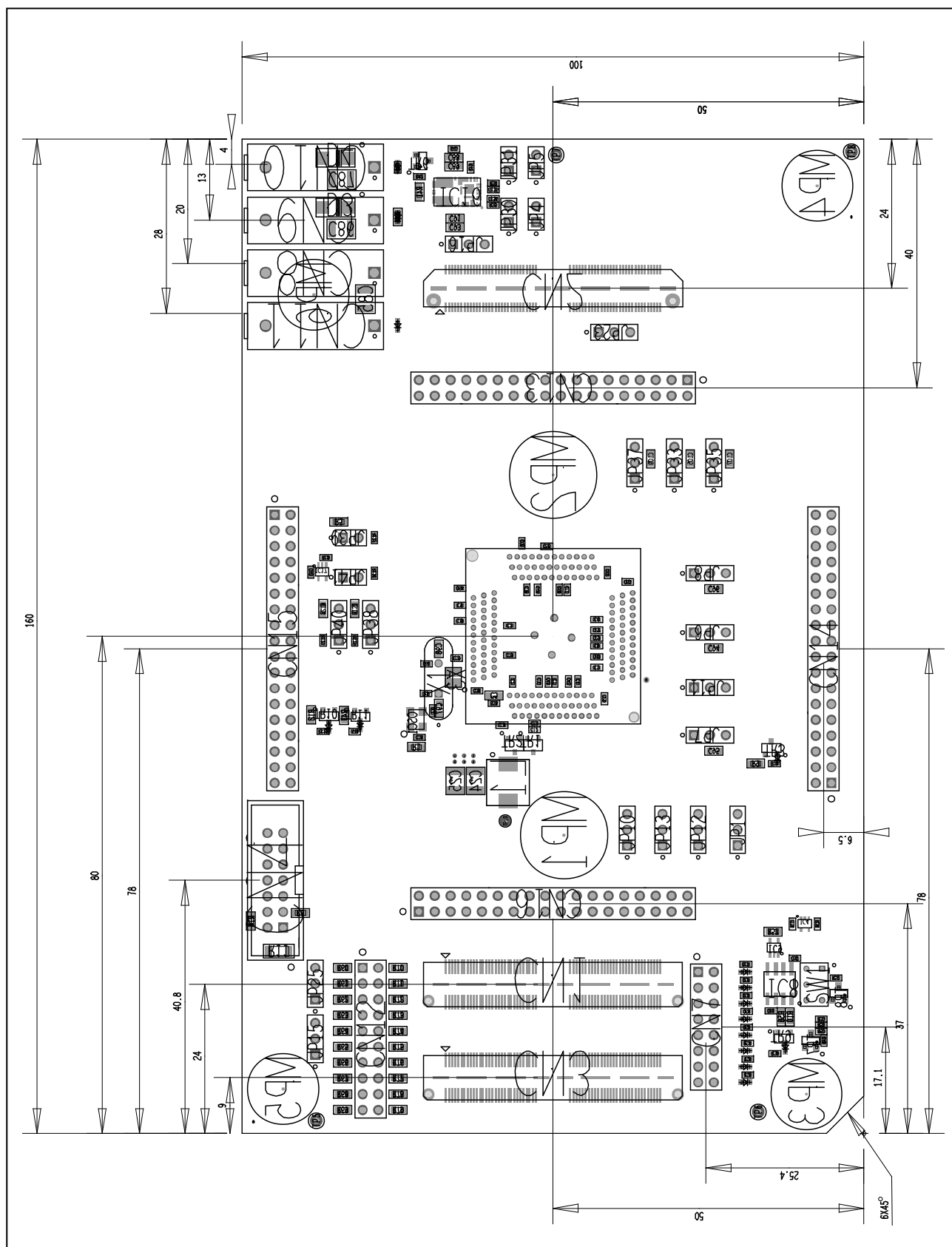
This concerns all boards of revision D019381\_06\_V01.

#### **9.4 Power On Piggyback Board Without RH850 Microcontroller installed**

The piggyback board Y-RH850-U2A-176PIN-PB-T1-V1 is not designed to be powered on when the RH850 microcontroller is not installed in socket IC1.

If the microcontroller is not installed the SVR power supply circuit does not have the control signals SVRNGATE and SVRPGATE and may be damaged.

If for some reason the board has to be powered on without a microcontroller mounted in socket IC1 please make sure the jumper JP12[1-2-3] (SVRDRVCC) is open. In this case no power is supplied to the SVR control circuit, and it will not be damaged.



## 11. Schematics

### CAUTION

The schematics shown in this document are not intended to be used as a reference for mass production. Any usage in an application design is in sole responsibility of the customer.

The following components described in the schematics are not provided with the board upon delivery:

- Oscillators and resonators: OSC1, X3
- Capacitors: C97, C98
- Resistors: R2 – R4, R34

The above components are indicated with "DNF/DNB" or crossed out in the schematics.

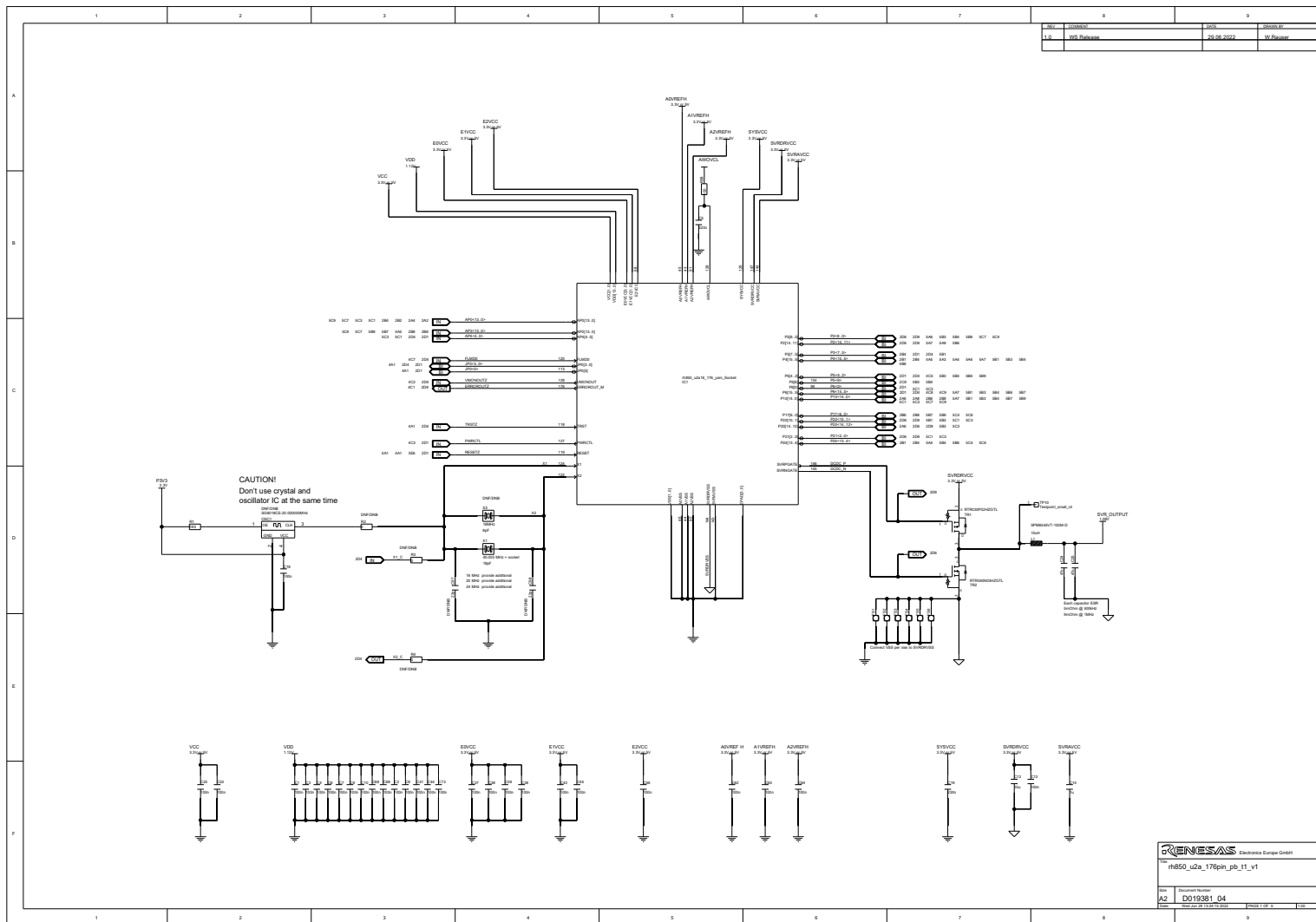
The following components described in the schematics are provided with but not mounted on the board upon delivery:

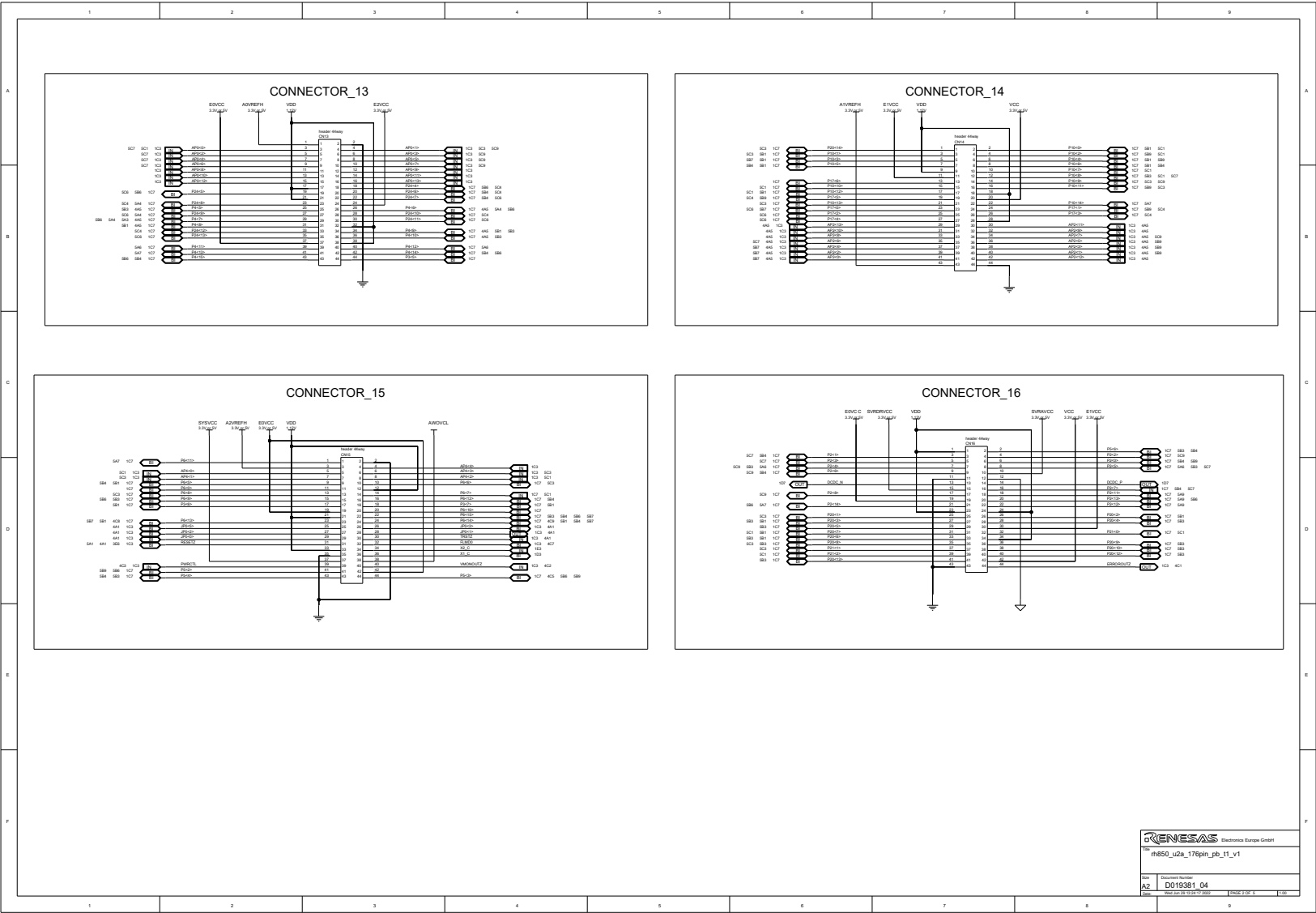
- 1 Hirschmann 4 mm power lab sockets, red for CN11
- Three resonators HC49 (16/20/24 MHz)
- 31 jumpers, 2.54 mm, black

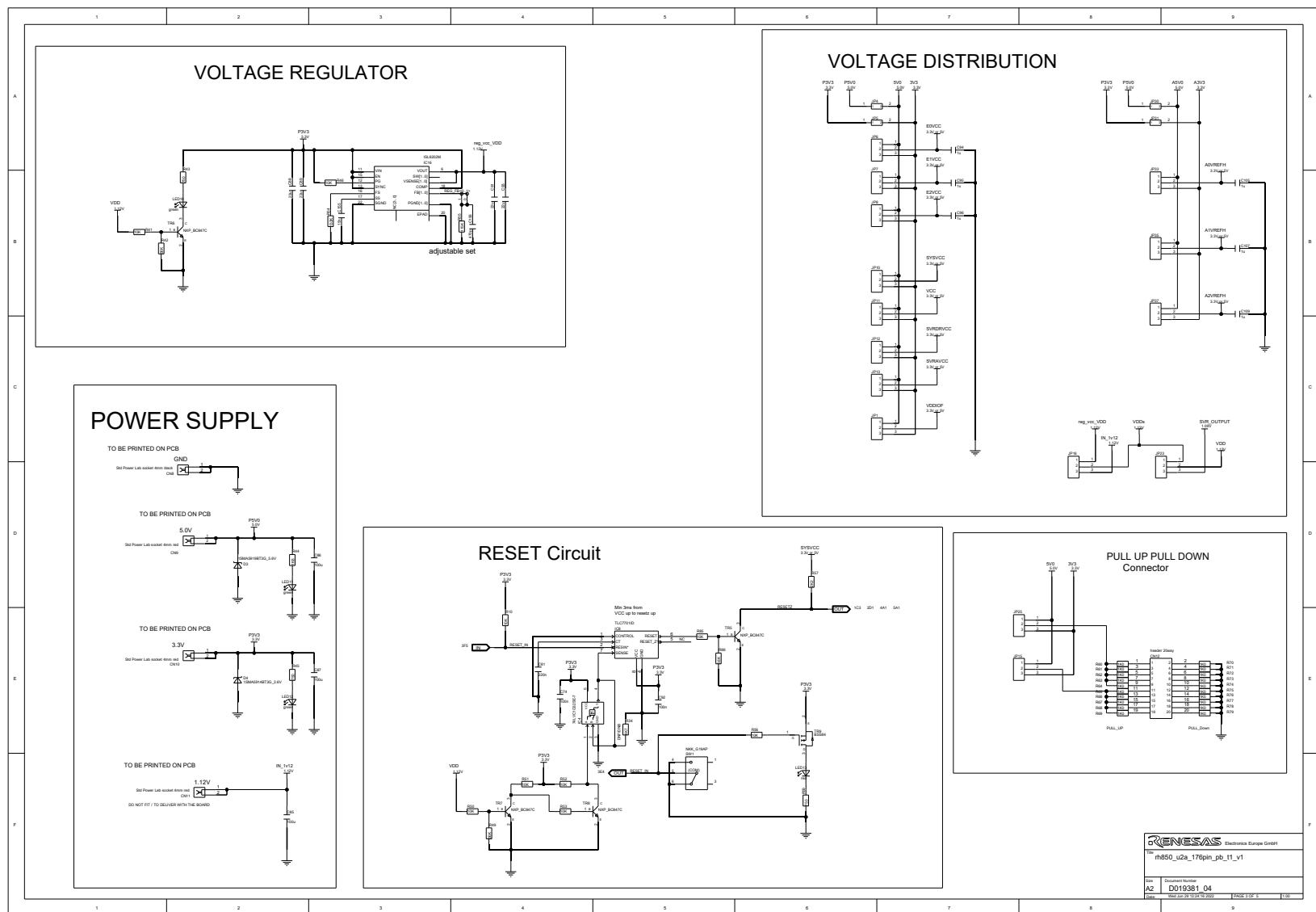
The above components are indicated with "DO NOT FIT / TO DELIVER WITH THE BOARD" or "provide additional" in the schematics.

## 11.1 PCB Version D019381\_06\_V0100

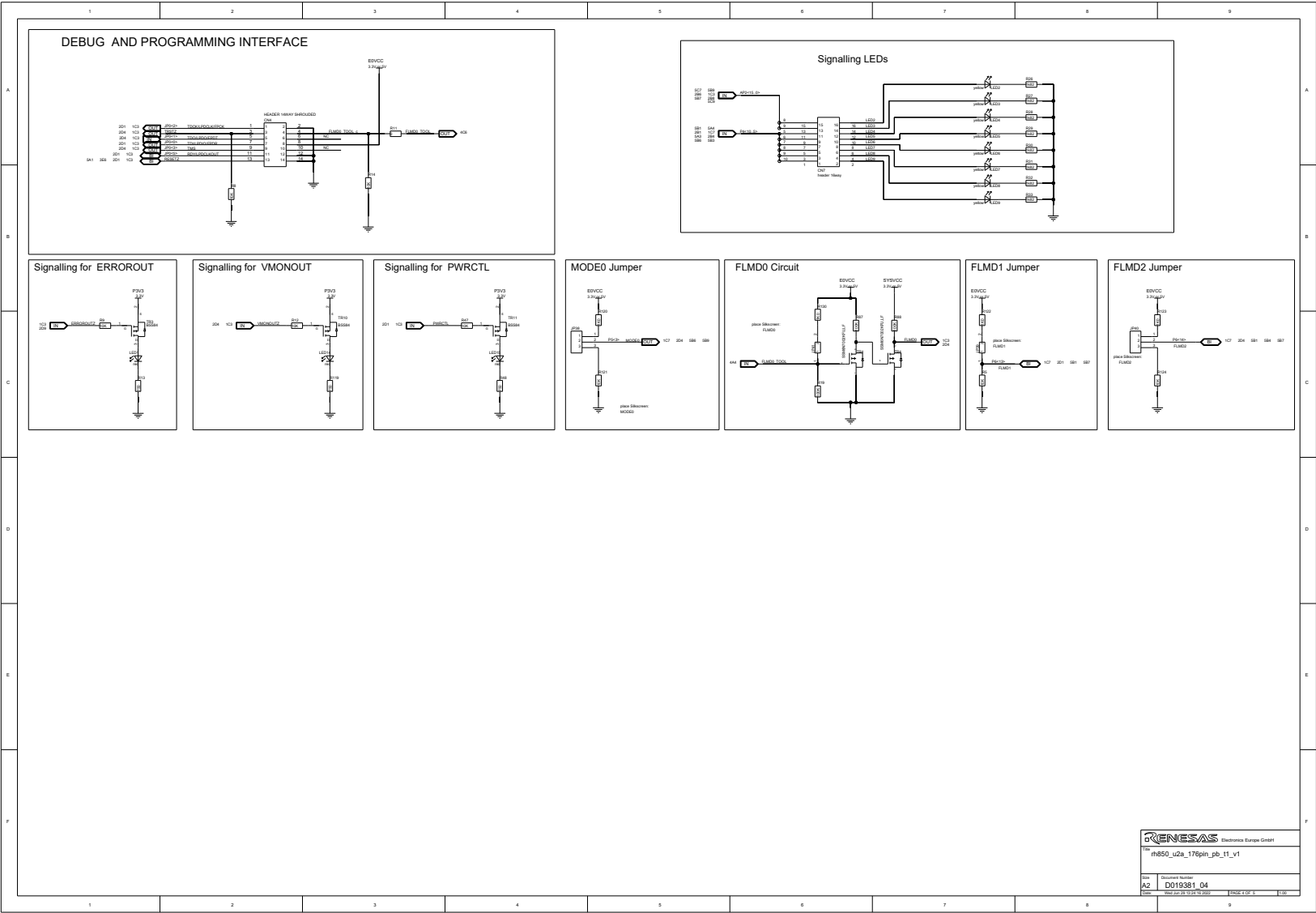
**11.1.1 Page 1**

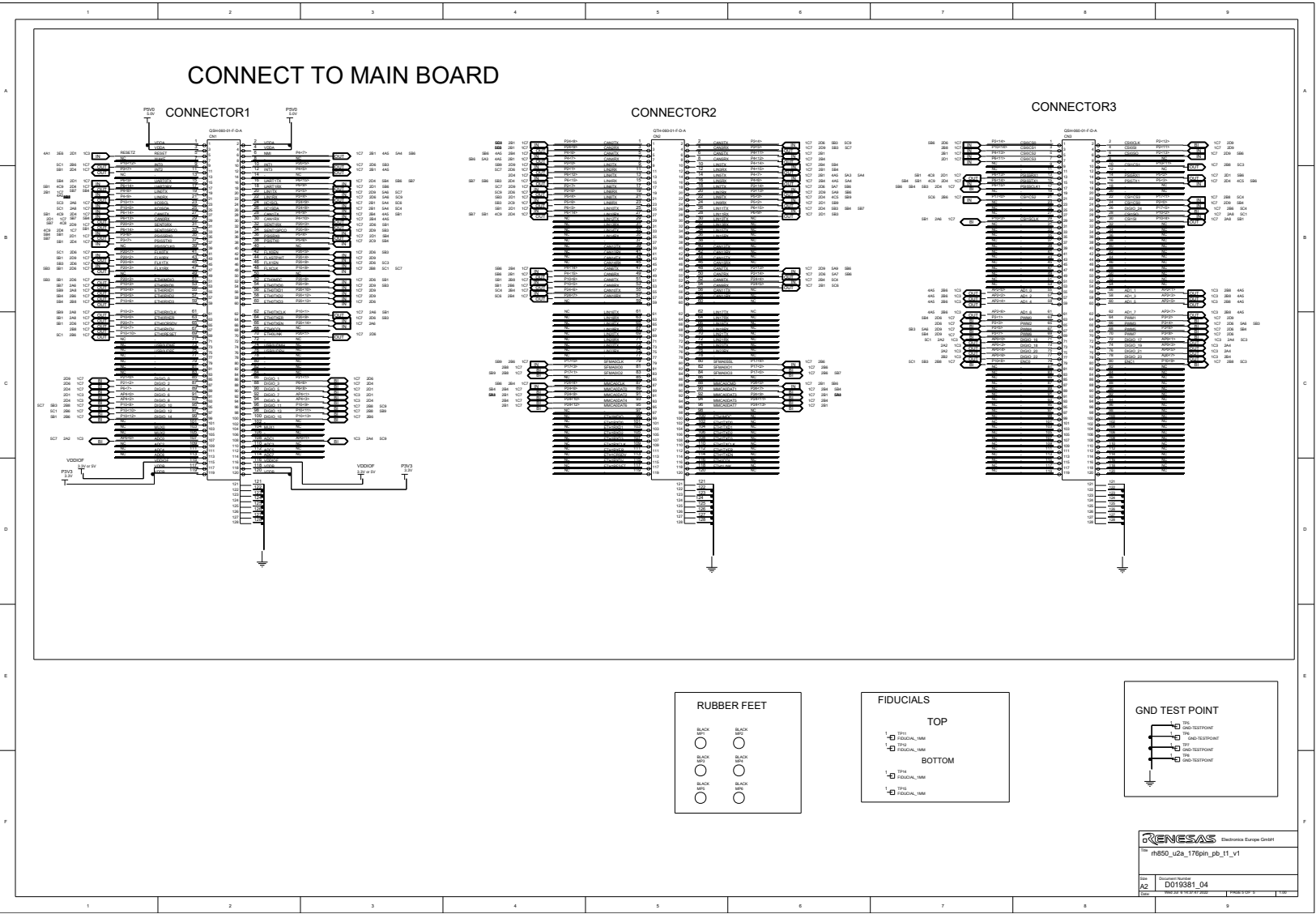






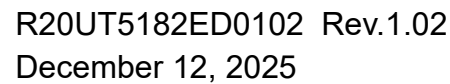
11.1.4 Page 4





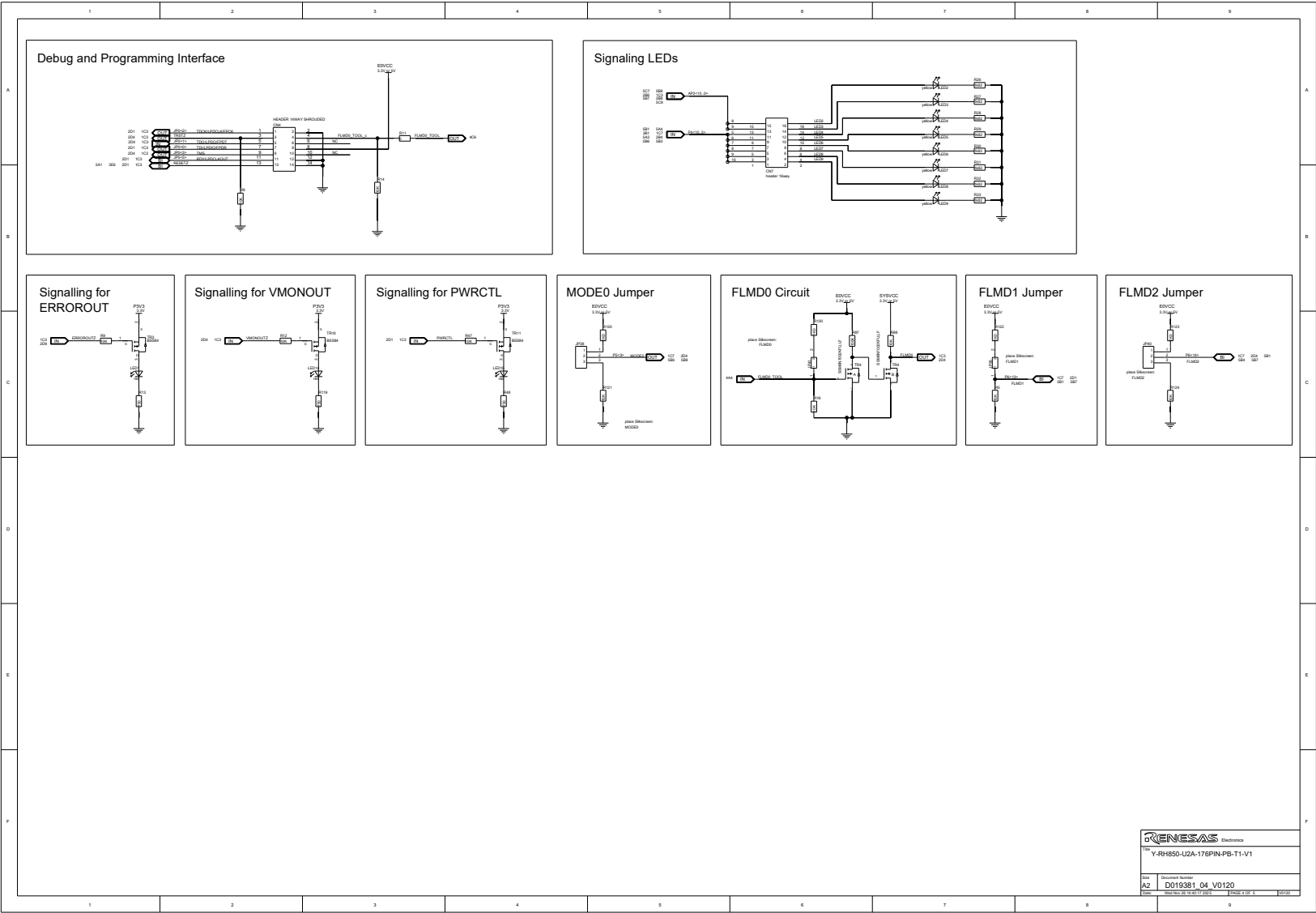


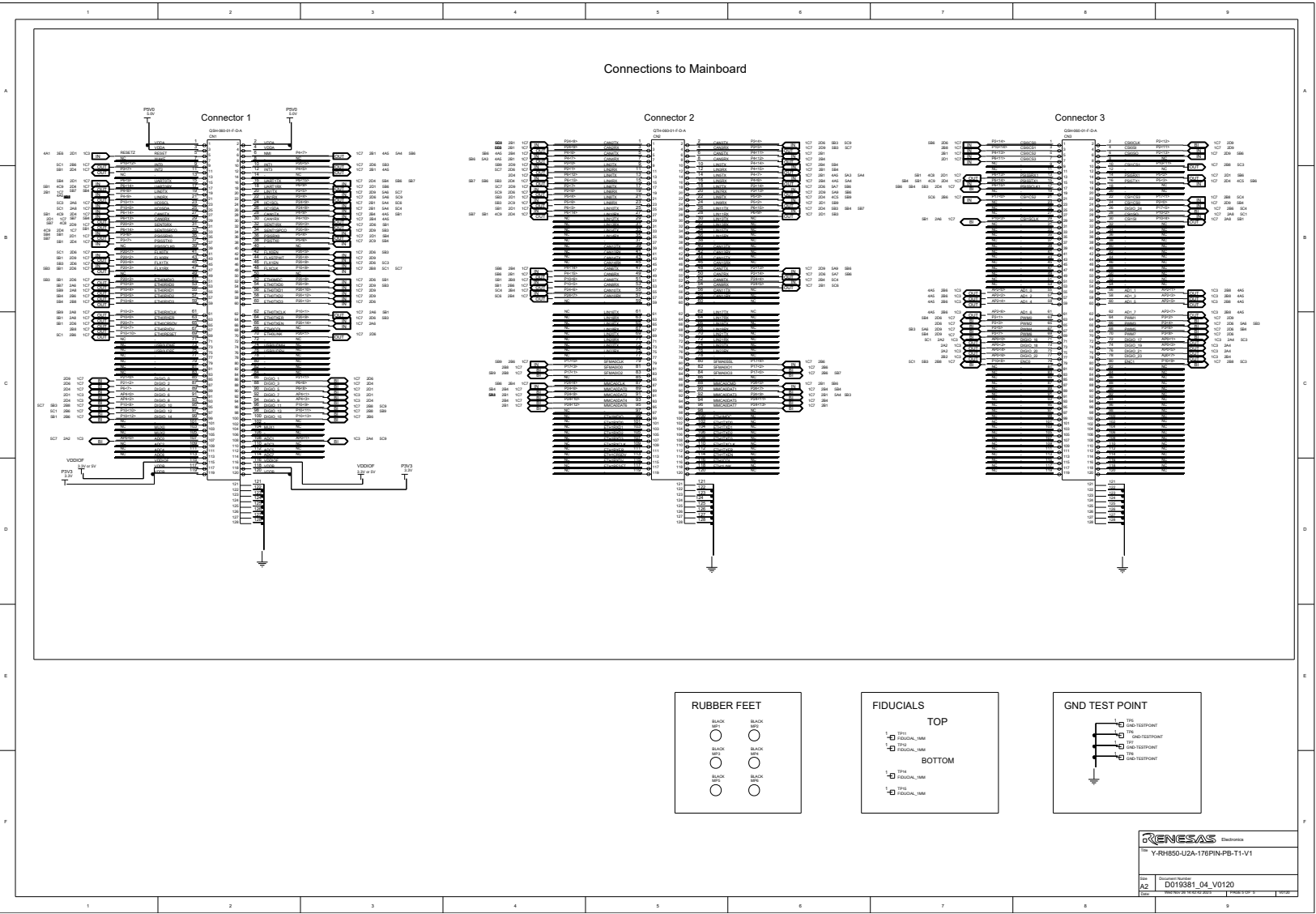
## 11.2.1 Page 1











# Revision History

		Description	
Rev.	Date	Page	Summary
V1.02	2025-12-12	21	Changed marking for not assembled components
		24	Changed resistor values in FLMD0 circuit in chapter <i>6.1 Operation Mode Selection</i> .
		24, 43	Added explanation for FLMD1 setting in Serial Programming Mode
		6	Updated package contents list in <i>Table 1.1</i> .
V1.01	2023-10-26	48	Added precaution about wrongly assembled ceramic resonator X3 in <i>9.3 Assembly of Oscillator X3</i>
		17, 49	Added precaution about power on of piggyback board without a microcontroller mounted in <i>9.4 Power On Piggyback Board Without RH850 Microcontroller installed</i> . Caution in <i>3.1 Board Power Connection</i> .
V1.00	2022-09-28	–	Initial release

---

**RH850/U2A 176pin Piggyback Board V1 User's Manual: Piggyback Board**

**Publication Date: Rev.1.02 December 12, 2025**

**Published by: Renesas Electronics Corporation**

---

**SALES OFFICES****Renesas Electronics Corporation**<http://www.renesas.com>

Refer to "http://www.renesas.com/" for the latest and detailed information.

**Renesas Electronics America Inc.**1001 Murphy Ranch Road, Milpitas, CA 95035, U.S.A.  
Tel: +1-408-432-8888, Fax: +1-408-434-5351**Renesas Electronics Canada Limited**9251 Yonge Street, Suite 8309 Richmond Hill, Ontario Canada L4C 9T3  
Tel: +1-905-237-2004**Renesas Electronics Europe Limited**Dukes Meadow, Millboard Road, Bourne End, Buckinghamshire, SL8 5FH, U.K.  
Tel: +44-1628-651-700, Fax: +44-1628-651-804**Renesas Electronics Europe GmbH**Arcadiastrasse 10, 40472 Düsseldorf, Germany  
Tel: +49-211-6503-0, Fax: +49-211-6503-1327**Renesas Electronics (China) Co., Ltd.**Room 1709 Quantum Plaza, No.27 ZhichunLu, Haidian District, Beijing, 100191 P. R. China  
Tel: +86-10-8235-1155, Fax: +86-10-8235-7679**Renesas Electronics (Shanghai) Co., Ltd.**Unit 301, Tower A, Central Towers, 555 Langao Road, Putuo District, Shanghai, 200333 P. R. China  
Tel: +86-21-2226-0888, Fax: +86-21-2226-0999**Renesas Electronics Hong Kong Limited**Unit 1601-1611, 16/F., Tower 2, Grand Century Place, 193 Prince Edward Road West, Mongkok, Kowloon, Hong Kong  
Tel: +852-2265-6688, Fax: +852 2886-9022**Renesas Electronics Taiwan Co., Ltd.**13F, No. 363, Fu Shing North Road, Taipei 10543, Taiwan  
Tel: +886-2-8175-9600, Fax: +886 2-8175-9670**Renesas Electronics Singapore Pte. Ltd.**80 Bendemeer Road, Unit #06-02 Hyflux Innovation Centre, Singapore 339949  
Tel: +65-6213-0200, Fax: +65-6213-0300**Renesas Electronics Malaysia Sdn.Bhd.**Unit 1207, Block B, Menara Amcorp, Amcorp Trade Centre, No. 18, Jln Persiaran Barat, 46050 Petaling Jaya, Selangor Darul Ehsan, Malaysia  
Tel: +60-3-7955-9390, Fax: +60-3-7955-9510**Renesas Electronics India Pvt. Ltd.**No.777C, 100 Feet Road, HAL 2nd Stage, Indiranagar, Bangalore 560 038, India  
Tel: +91-80-67208700, Fax: +91-80-67208777**Renesas Electronics Korea Co., Ltd.**17F, KAMCO Yangjae Tower, 262, Gangnam-daero, Gangnam-gu, Seoul, 06265 Korea  
Tel: +82-2-558-3737, Fax: +82-2-558-5338



RH850/U2A 176pin