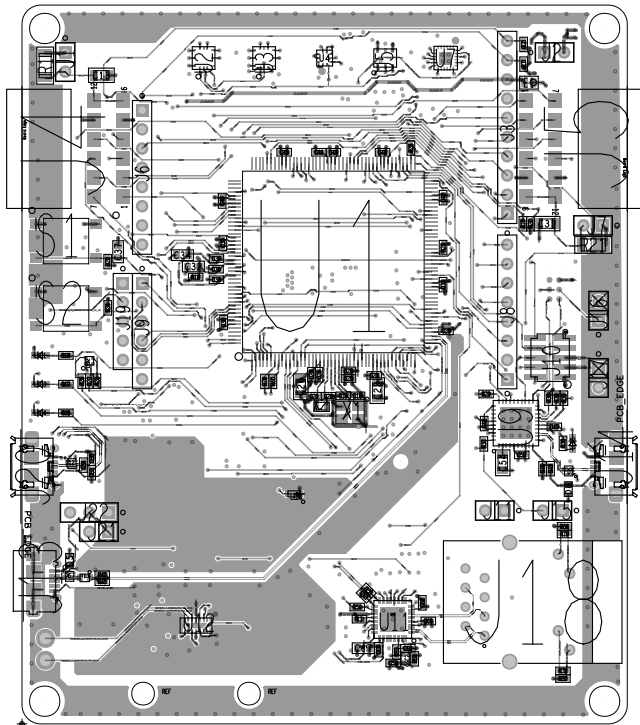


ART FILM - OUTLINE

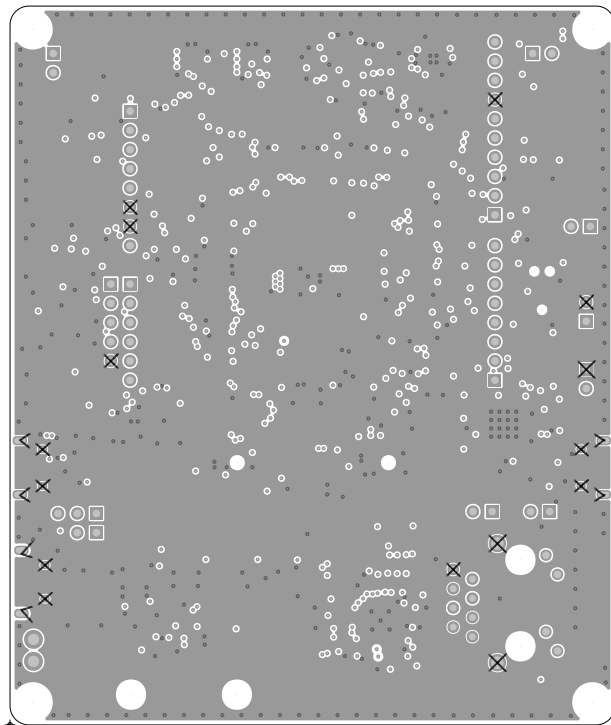
A large, empty rectangular box with rounded corners, intended for an outline or drawing. The box is defined by a thin black border and occupies the central portion of the page.

ART FILM - OUTLINE

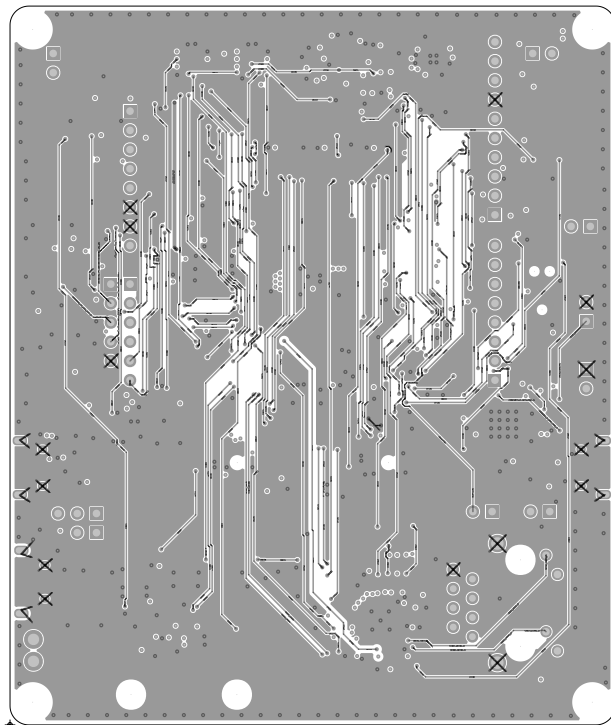
ART FILM - TOP



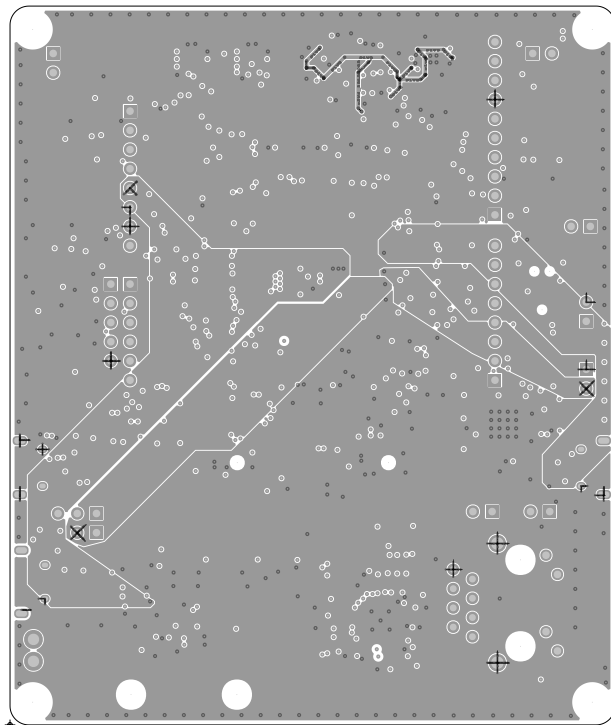
ART FILM - TOP

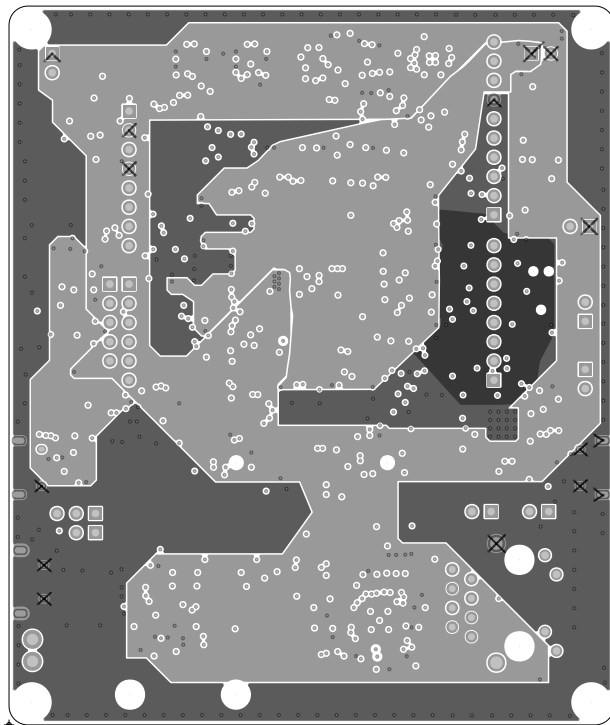


ART FILM - LAYER3

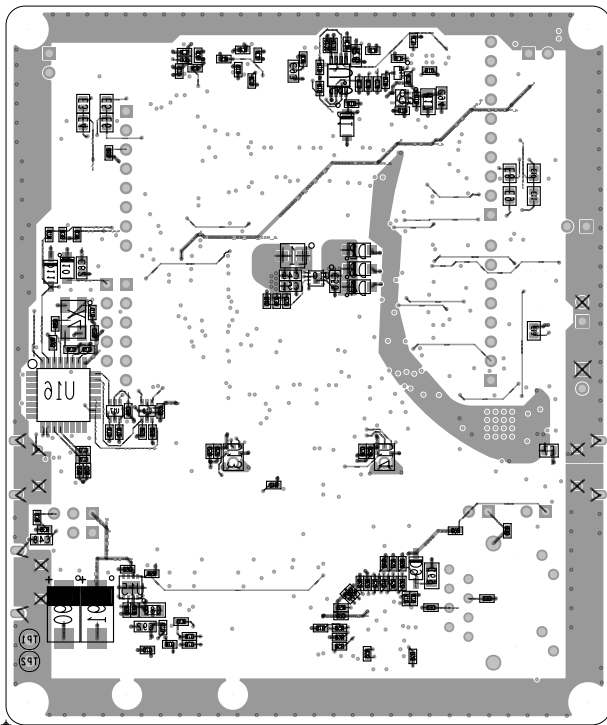


ART FILM - LAYER3

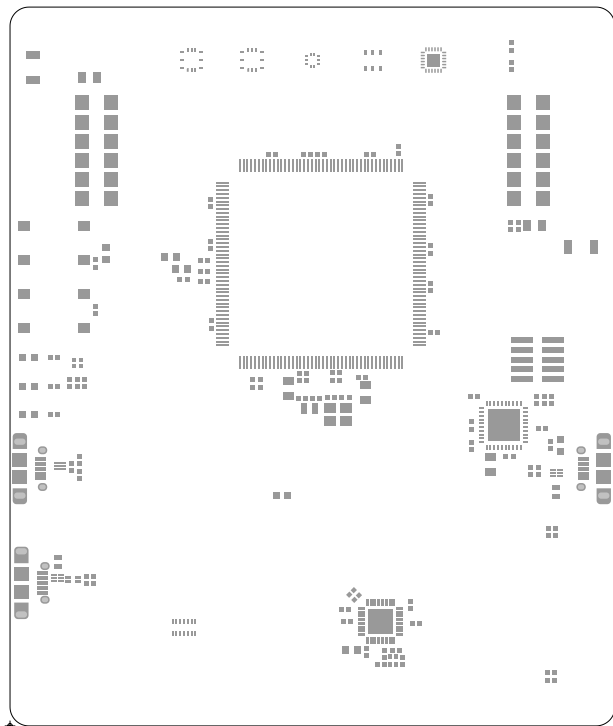




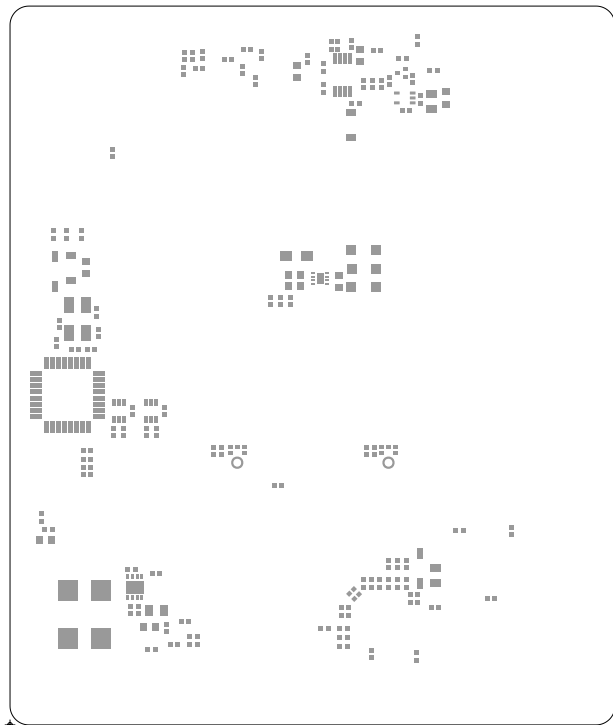
ART FILM - BOTTOM



ART FILM - BOTTOM

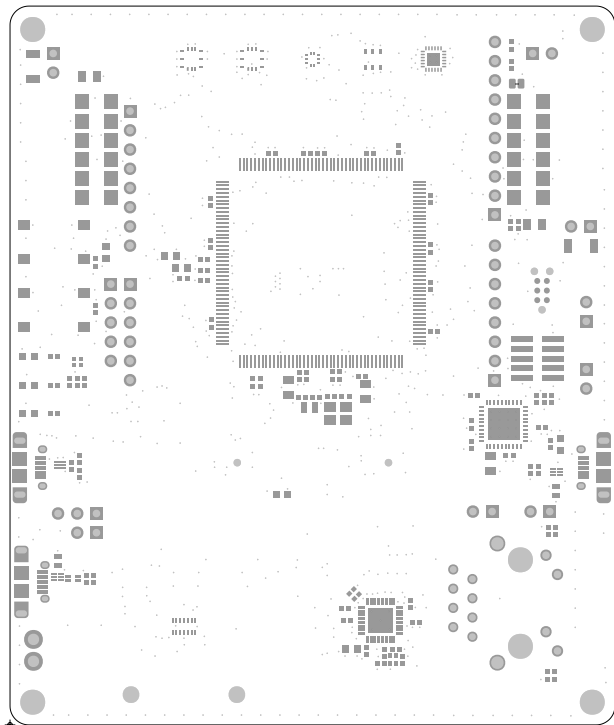


ART FILM - PASTEMASK_BOTTOM



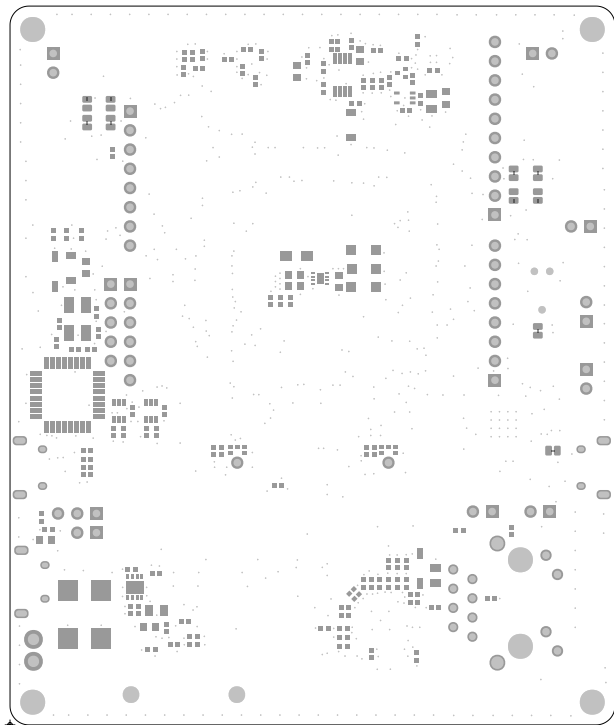
ART FILM - PASTEMASK_BOTTOM

ART FILM - SOLDERMASK_TOP

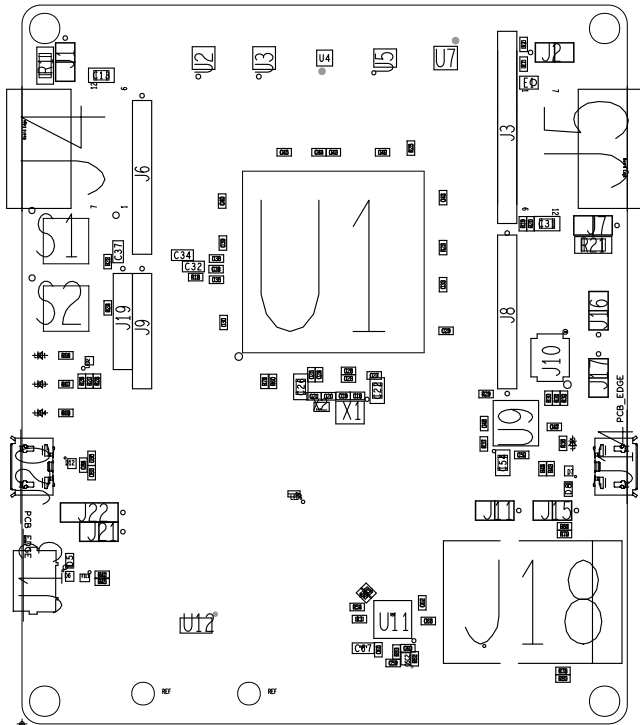


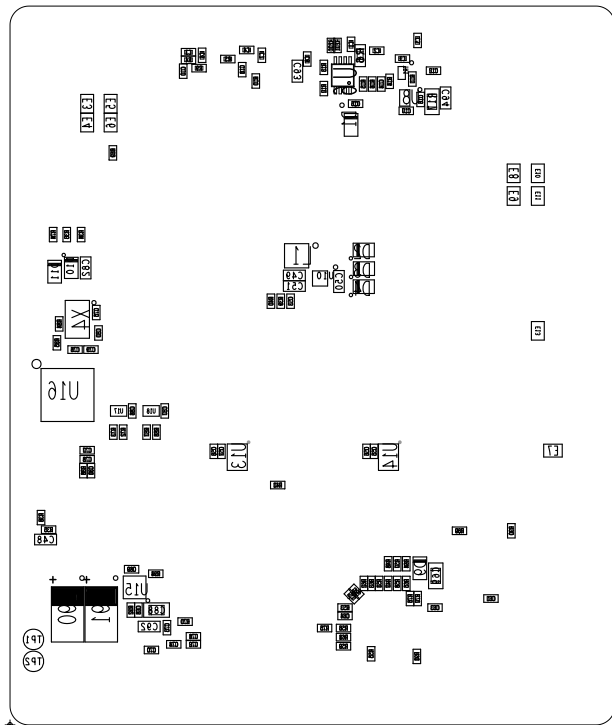
ART FILM - SOLDERMASK_TOP

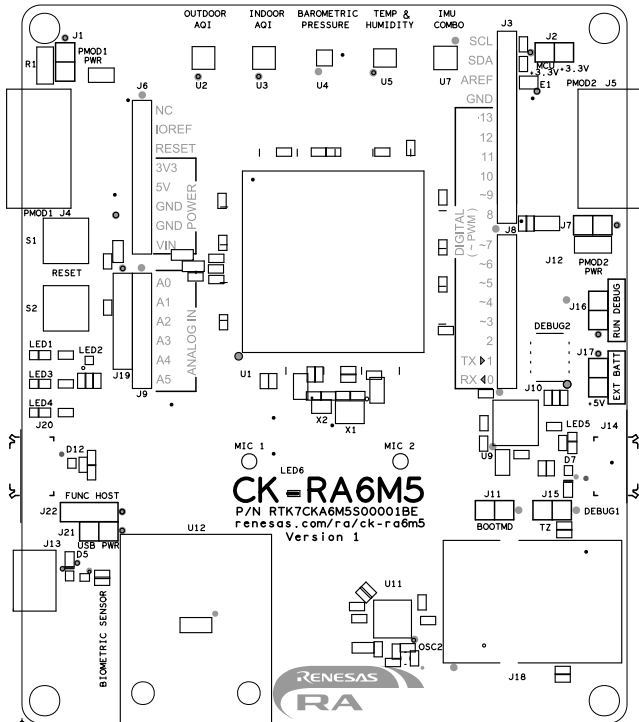
ART FILM - SOLDERMASK_BOTTOM



ART FILM - SOLDERMASK_BOTTOM





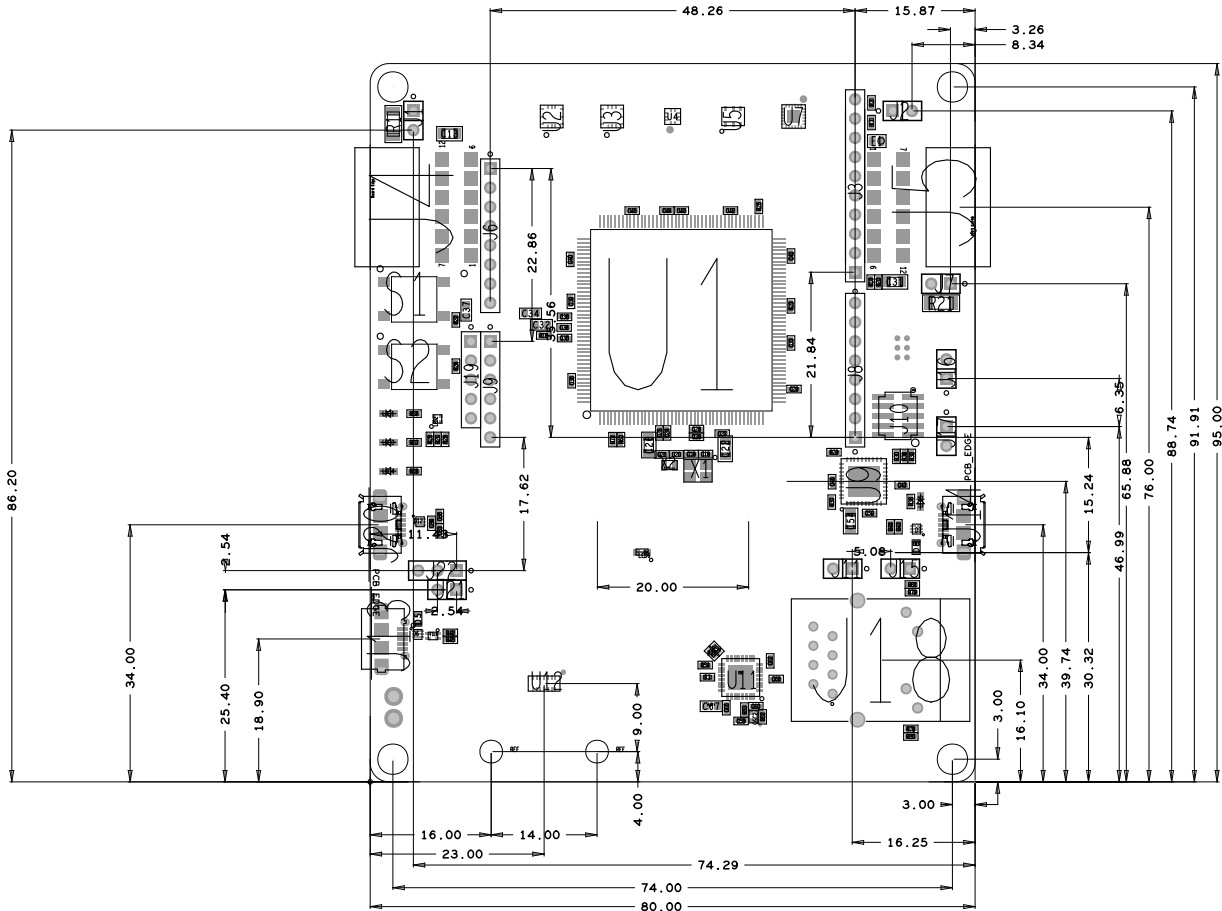




All rights strictly reserved.
Reproduction or issue to third parties in
any form whatever is not permitted without
written authority from the proprietor.

CAD-ZEICHNUNG
manuelle Aenderung unzulassig

Alle Rechte ausdrucklich vorbehalten.
Vervielfaeltigung oder Mitteilung an Dritte.
gleichzeitig in welcher Form, ist ohne schriftliche
Genehmigung des Eigentumers nicht gestattet.



PCB Specification and Layer Stackup
see PCB_Tech_Spec* Document

Renesas	Title CK-RA6M5					Date	KM-Nr.							
	Code-Nr. D018162_06_V0300													
Name K.Hesse		Replacement for		These intangible goods are not subject to Annex I of common Dual-Use list (428/2009) in its current version.		SWV V17.4		Doc 110		Page 1 / X		A3		
Date 01.02.2022		-												
Copyright: Renesas Electronics Corporation, D-40472 Duesseldorf Germany													© 2022	

Alle Rechte ausdrücklich vorbehalten.
Vervielfältigung oder Mitteilung an Dritte,
gleichgültig in welcher Form, ist ohne schriftliche
Genehmigung des Eigentümers nicht gestattet.

1
CAD-ZEICHNUNG
manuelle Aenderung unzulässig |

[illegible]