

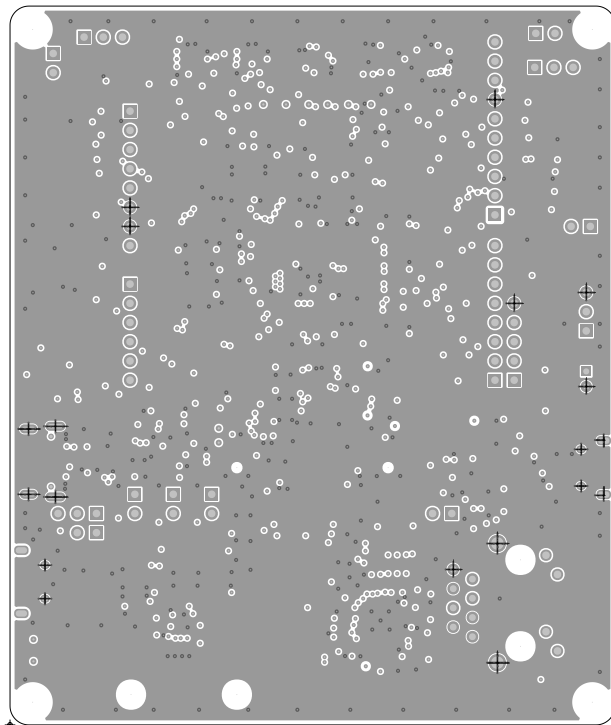
ART FILM - OUTLINE

A large, empty rectangular box with rounded corners, intended for an outline or drawing. The box is defined by a thin black border and occupies the central portion of the page.

ART FILM - OUTLINE

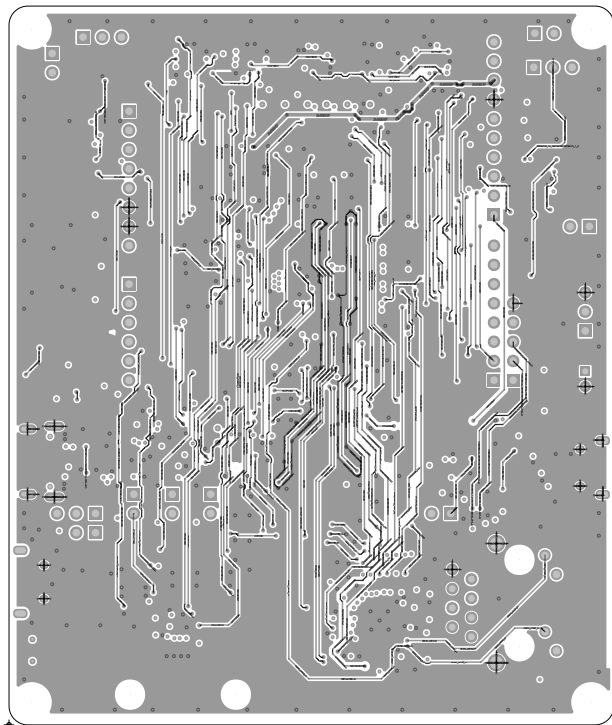
ART FILM - TOP

ART FILM - LAYER2



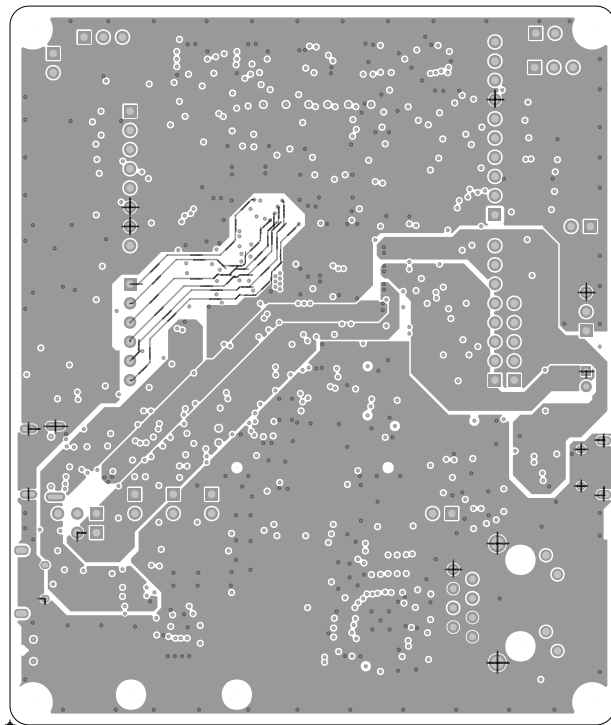
ART FILM - LAYER2

ART FILM - LAYER3



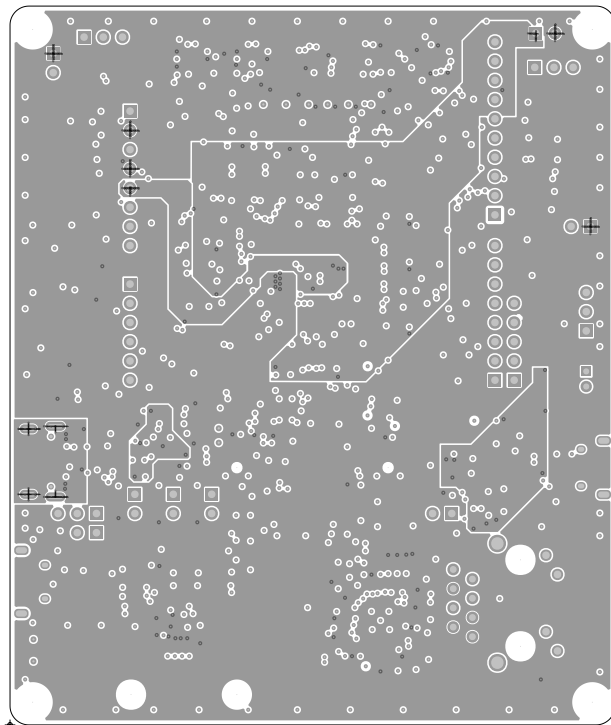
ART FILM - LAYER3

ART FILM - LAYER4



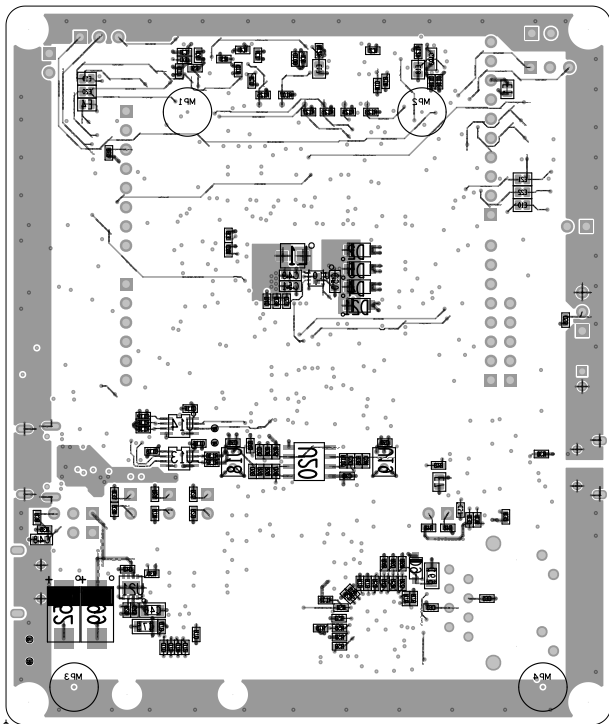
ART FILM - LAYER4

ART FILM - LAYER5

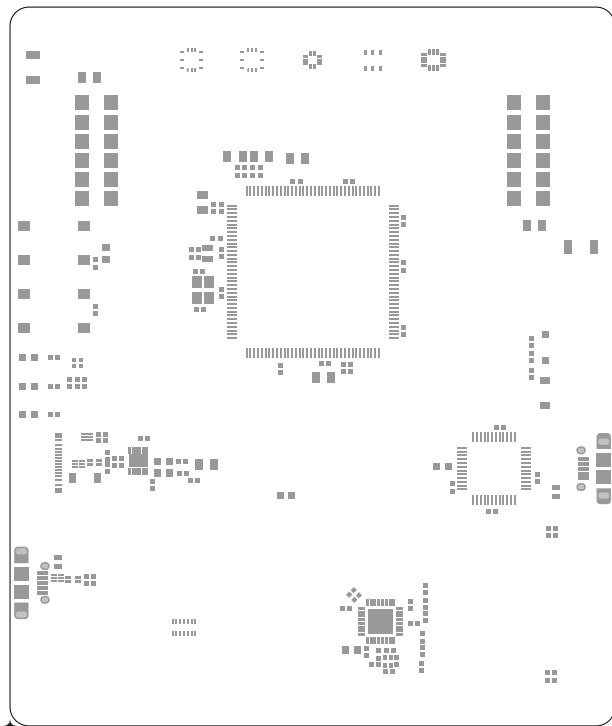


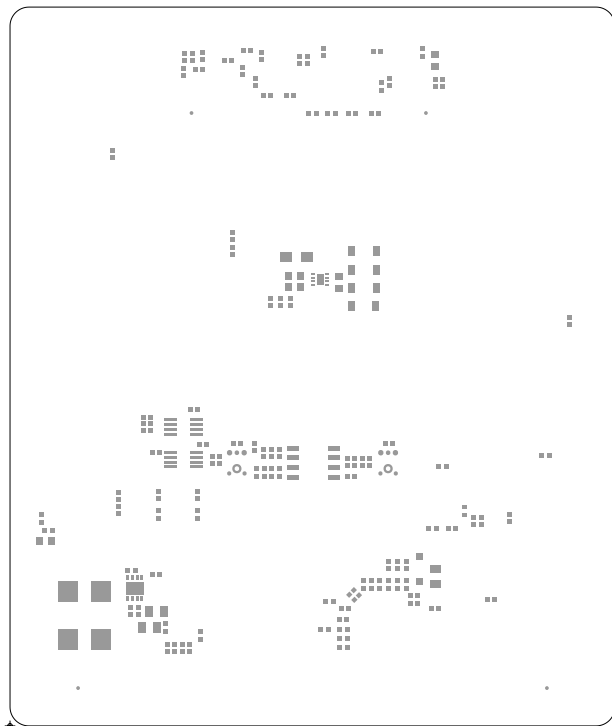
ART FILM - LAYER5

ART FILM - BOTTOM

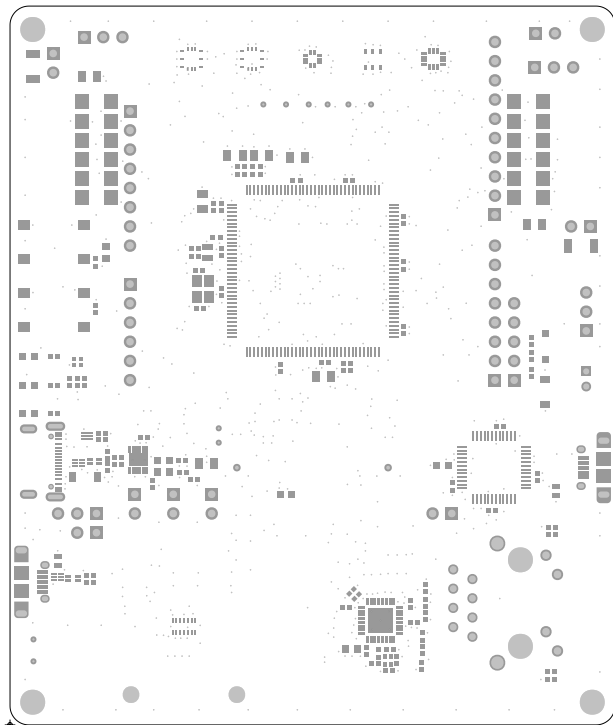


ART FILM - BOTTOM



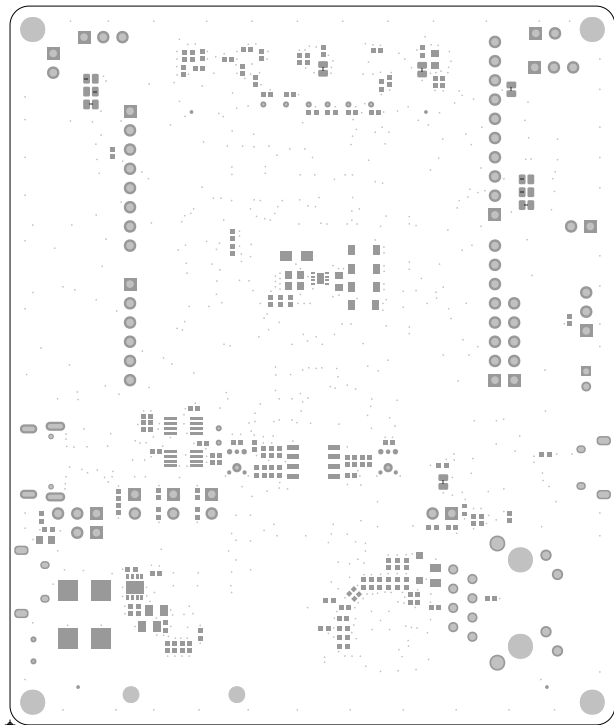


ART FILM - SOLDERMASK_TOP



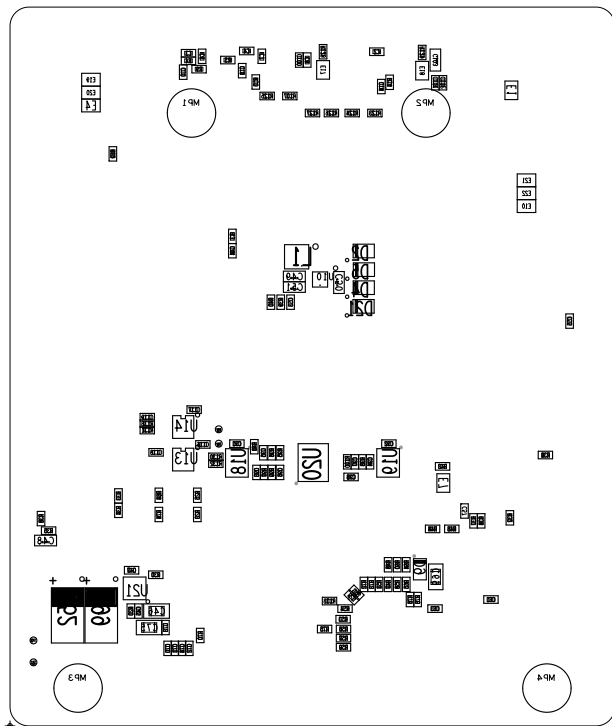
ART FILM - SOLDERMASK_TOP

ART FILM - SOLDERMASK_BOTTOM

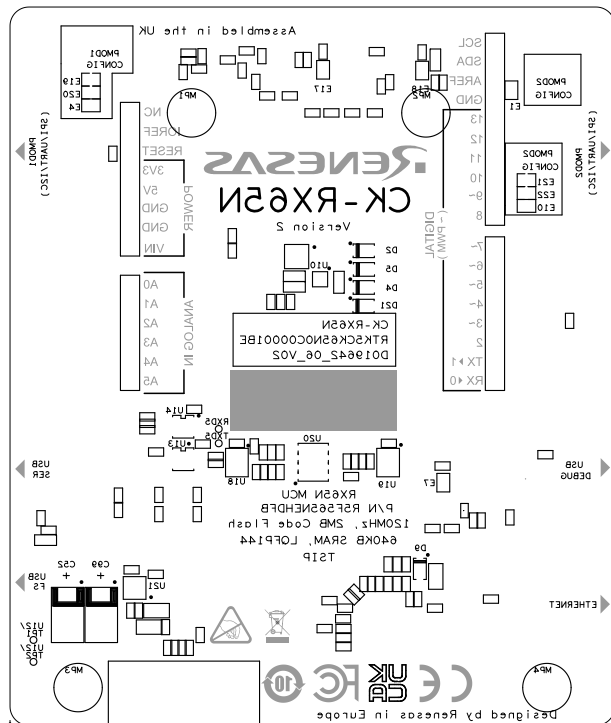


ART FILM - SOLDERMASK_BOTTOM

ART FILM - ASSEMBLY_BOTTOM

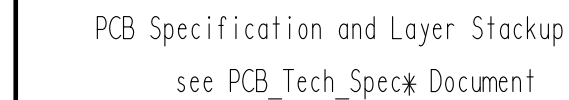


ART FILM - ASSEMBLY_BOTTOM



Alle Rechte ausdruecklich vorbehalten.
Vervielfaeltigung oder Mittheilung an Dritte,
gleichgueltig in welcher Form, ist ohne schriftliche
Genehmigung des Eigentumers nicht gestattet.

1
CAD-ZEICHNUNG
manuelle Aenderung unzulässig |

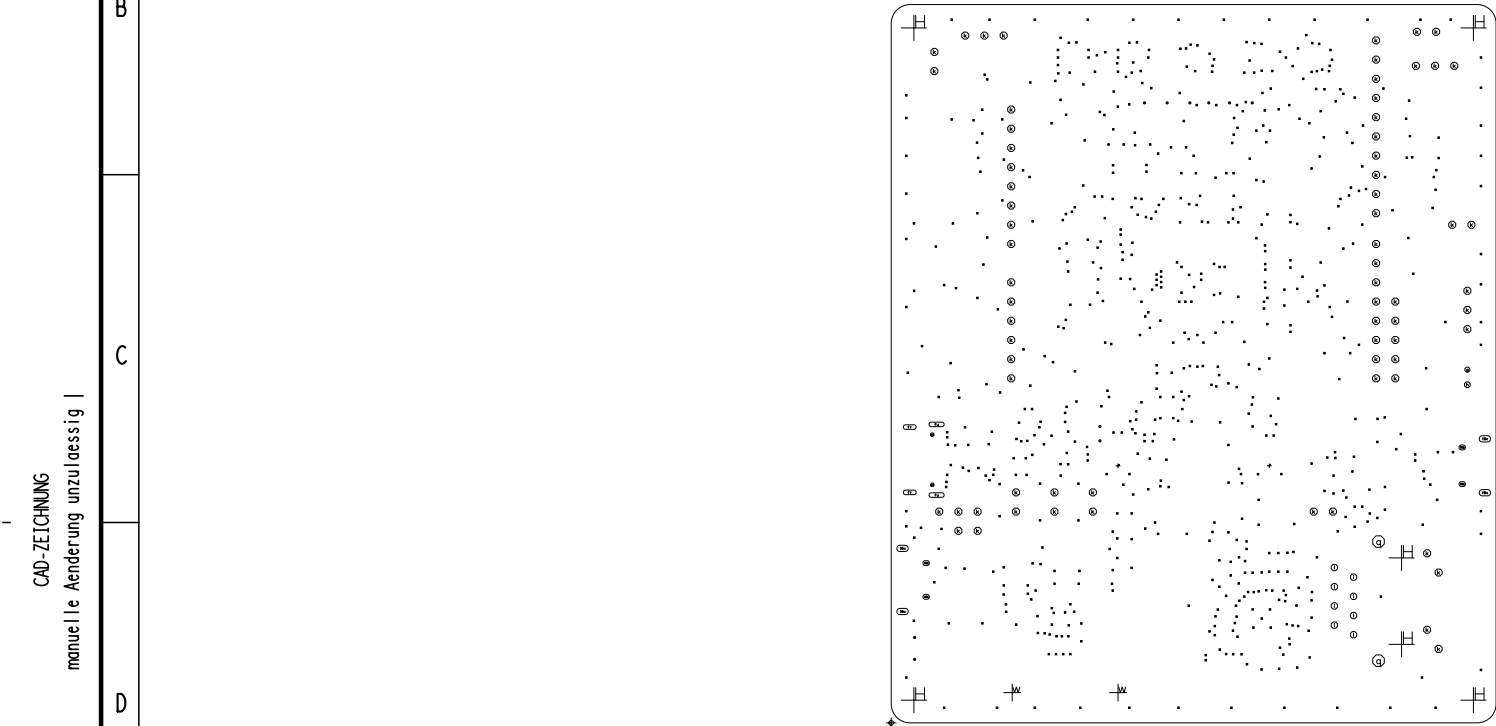


Renesas	Title <div>CK-RX65N</div>				Date		KM-Nr.	
	Code-Nr. <div>D019642 06 V02</div>							
Name Date	K.Hesse 27.04.2023	Replacement for -		SWV V22.1	Doc 110	Page 1 / X	A3	
Copyright: Renesas Electronics Corporation. D-40472 Duesseldorf Germany								© 2023

All rights strictly reserved.
Reproduction or issue to third parties in
any form whatever is not permitted without
written authority from the proprietor.

CAD-ZEICHNUNG
manuelle Änderung unzulässig

Alle Rechte ausdrücklich vorbehalten.
Vervielfältigung oder Mitteilung an Dritte,
gleichgültig in welcher Form, ist ohne schriftliche
Genehmigung des Eigentümers nicht gestattet.



DRILL CHART: TOP to BOTTOM					
ALL UNITS ARE IN MILLIMETERS					
FIGURE	FINISHED SIZE	TOLERANCE_DRILL	TOLERANCE_TRAVEL	PLATED	QTY
•	0.2	+0.05/-0.05	-	PLATED	689
•	0.3	+0.1/-0.1	-	PLATED	10
•	0.45	+0.1/-0.0	-	PLATED	2
•	0.8	+0.1/-0.1	-	PLATED	1
•	0.8	+0.1/-0.1	-	PLATED	1
•	0.9	+0.1/-0.1	-	PLATED	8
•	1.0	+0.1/-0.1	-	PLATED	69
•	1.65	+0.1/-0.1	-	PLATED	2
•	0.5	+0.05/-0.05	-	NON-PLATED	2
•	2.2	+0.1/-0.1	-	NON-PLATED	2
•	3.3	+0.1/-0.1	-	NON-PLATED	6
•	0.85x0.65	+0.1/-0.1	+0.1/-0.1	PLATED	4
•	1.5x0.825	+0.1/-0.1	+0.1/-0.1	PLATED	4
•	1.7x0.6	+0.1/-0.1	+0.1/-0.1	PLATED	2
•	2.0x0.6	+0.1/-0.1	+0.1/-0.1	PLATED	2

TOTAL HOLES: 804

PCB Specification and Layer Stackup
see PCB_Tech_Spec* Document

Renesas	Title				Date	KM-Nr.	
	CK-RX65N						
	Code-Nr.						
	D019642_06_V02						
Name	K.Hesse	Replacement for		SWV	Doc	Page	
Date	27.04.2023	-		V22.1	110	1 / X	A3
Copyright: Renesas Electronics Corporation, D-40472 Duesseldorf Germany							© 2023