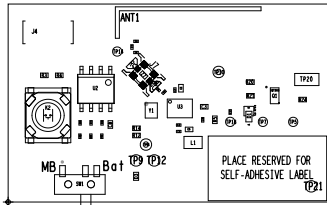
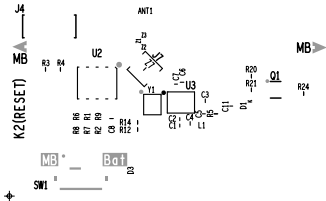


ART FILM - TOP_ASSEMBLY



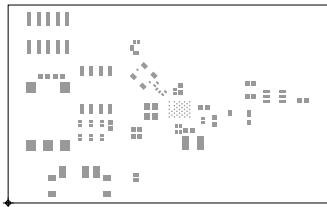
ART FILM - TOP_ASSEMBLY

ART FILM - TOP_SILK



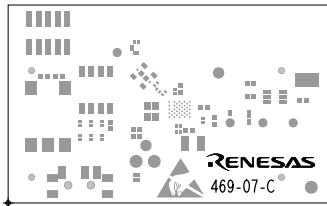
ART FILM - TOP_SILK

ART FILM - TOP_PASTE



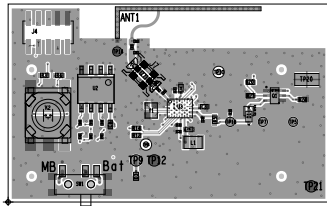
ART FILM - TOP_PASTE

ART FILM - TOP_MASK



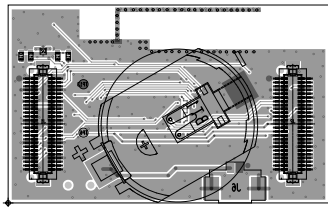
ART FILM - TOP_MASK

ART FILM - TOP

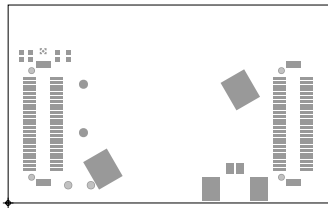


ART FILM - TOP

ART FILM - BOTTOM

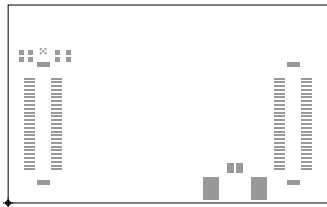


ART FILM - BOT_MASK



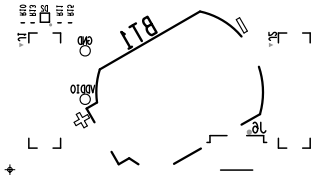
ART FILM - BOT_MASK

ART FILM - BOTTOM_PASTE



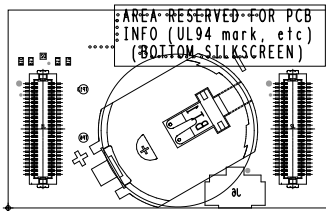
ART FILM - BOTTOM_PASTE

ART FILM - BOT_SILK



ART FILM - BOT_SILK

ART FILM - BOT_ASSEMBLY



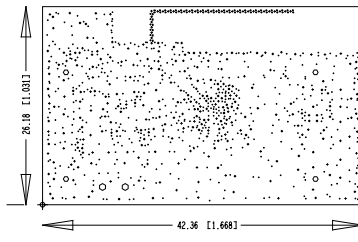
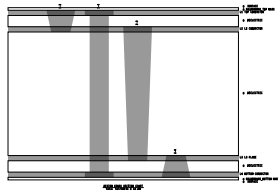
ART FILM - BOT_ASSEMBLY

ART FILM - BOARD_OUTLINE



ART FILM - BOARD_OUTLINE

ART FILM - FAB



PANELIZE 3 x 5 WITH BREAKOUTS

STANDARD TABLE					
Unit: - M11mm					
#	NAME	TYPE	MATERIAL	THICKNESS	
1	SOLDERMASK TOP	MASK	SOLDERMASK	0.015	
1	TOP CONDUCTOR	COPPER	COPPER	0.03	
1	DIELECTRIC	FIBREGLASS	FIBREGLASS	0.08	
2	CONDUCTOR	COPPER	COPPER	0.03	
2	DIELECTRIC	FIBREGLASS	FIBREGLASS	0.08	
3	PLATE	COPPER	COPPER	0.03	
3	DIELECTRIC	FIBREGLASS	FIBREGLASS	0.08	
4	CONDUCTOR	COPPER	COPPER	0.03	
4	SOLDERMASK BOTTOM	MASK	SOLDERMASK	0.015	
	SURFACE	AIR	AIR	0	
	TOTAL THICKNESS			0.99	



RENESAS

RENESAS ELECTRONICS
N.E.O Athinon - Patron 15
26441, Patras, Greece
tel: (+30) 2610390940
fax: (+30) 2610390941

TITLE: DA1459x-db-wlcspp39_vc

DoxBox#: 469-07-C

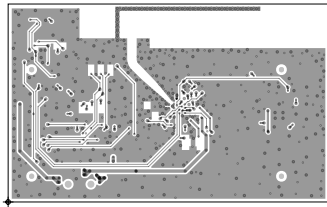
Designer: P.Raftopoulos

Rev: C

Date: 31-Aug-2023

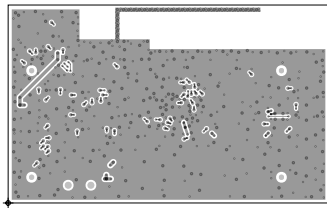
ART FILM - FAB

ART FILM - L2_INT1



ART FILM - L2_INT1

ART FILM - L3_INT2



ART FILM - L3_INT2