

Overview

REE RSB is an embedded board for sensors evaluation.

Revision History

R0.1

- Project created.

R1.0

- Project released for prototyping

R1.1

- Rearrangement of power supply section
- Moved ZMOD reset from P200
- Added missing pull-ups, SDA/SCL swapped on U7
- Added jumper on MCU reset
- PMOD connector updated
- Swapped BIT21 and BIT23 on J33
- Added missing supplies to VREFH/L

R1.1B

- VREF ADC decoupling C37 from 100 nF to 1 uF
- UART as default on PMODs R33, R35, R73, R75 from 0R0 to DNP

R1.2

- Crystals connections fixed; IRQ added on J33

Manufacturing / Mechanical

Logos

Renesas

Renesas RA

Segger

Asi5



+
FM1

+
FM2

+
FM3

+
FM4

+
FM5

+
FM6

Notes

Title: **REE RSB**

Section: Overview

Size: A4

Project code: R19P12

Revision: 1.2

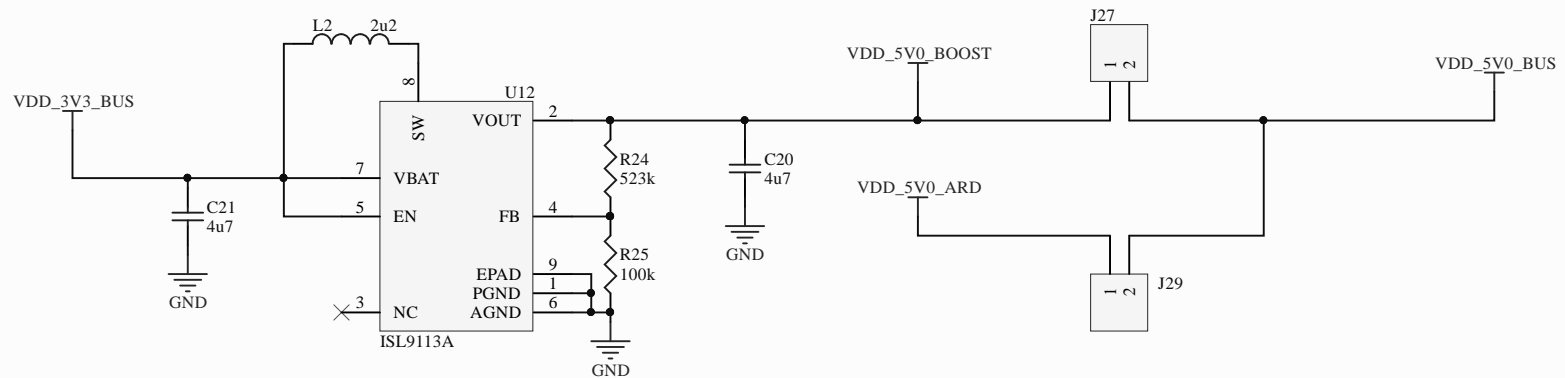
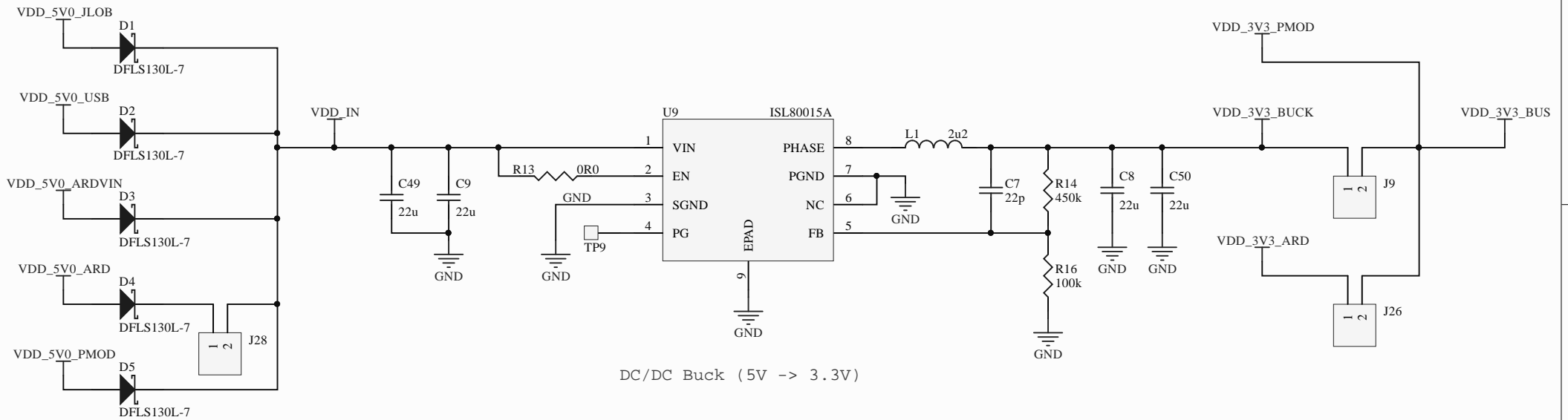
Date: 10/04/2020 Time: 18:42:41

Sheet 1 of 8

File: 01_Overview.SchDoc



RELOC s.r.l.
Strada Langhirano 264/3A
43124 Parma
Italy (www.reloc.it)
IT02510020346



Title: **REE RSB**

Section: Power Supply

Size: A4 Project code: R19P12

Date: 10/04/2020 Time: 18:42:41

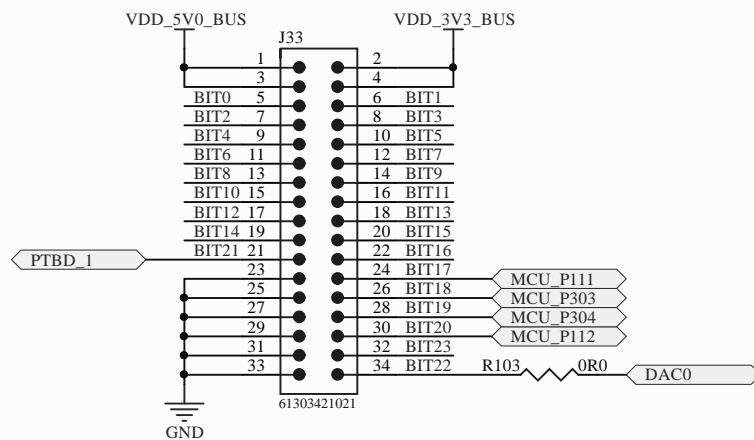
File: 02_Power_Supply.SchDoc

Revision: 1.2

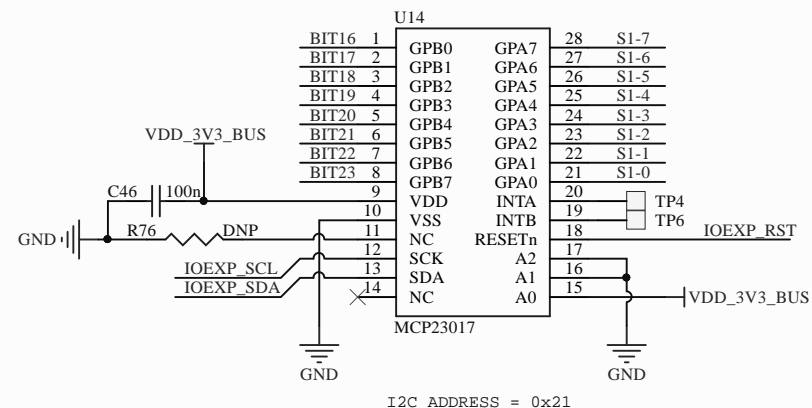
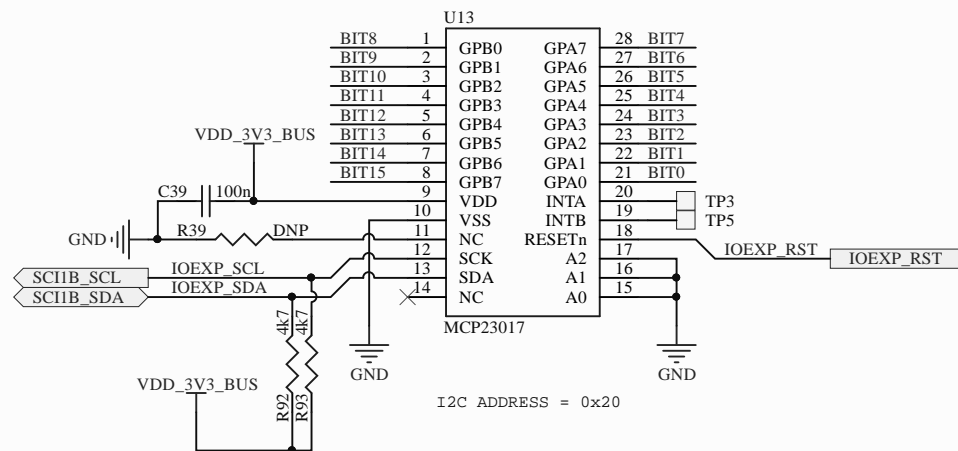
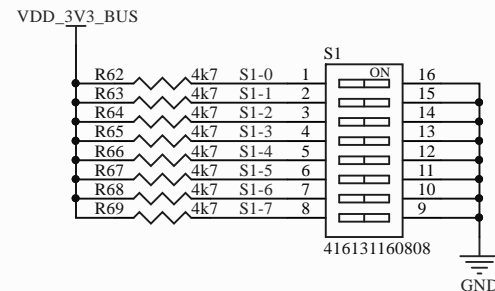
Sheet 2 of 8

RELOC

RELOC s.r.l.
Strada Langhirano 264/3A
43124 Parma
Italy (www.reloc.it)
IT02510020346



Proprietary Connector



Title: **REE RSB**

Section: Connectors

Size: A4 Project code: R19P12

Date: 10/04/2020 Time: 18:42:42

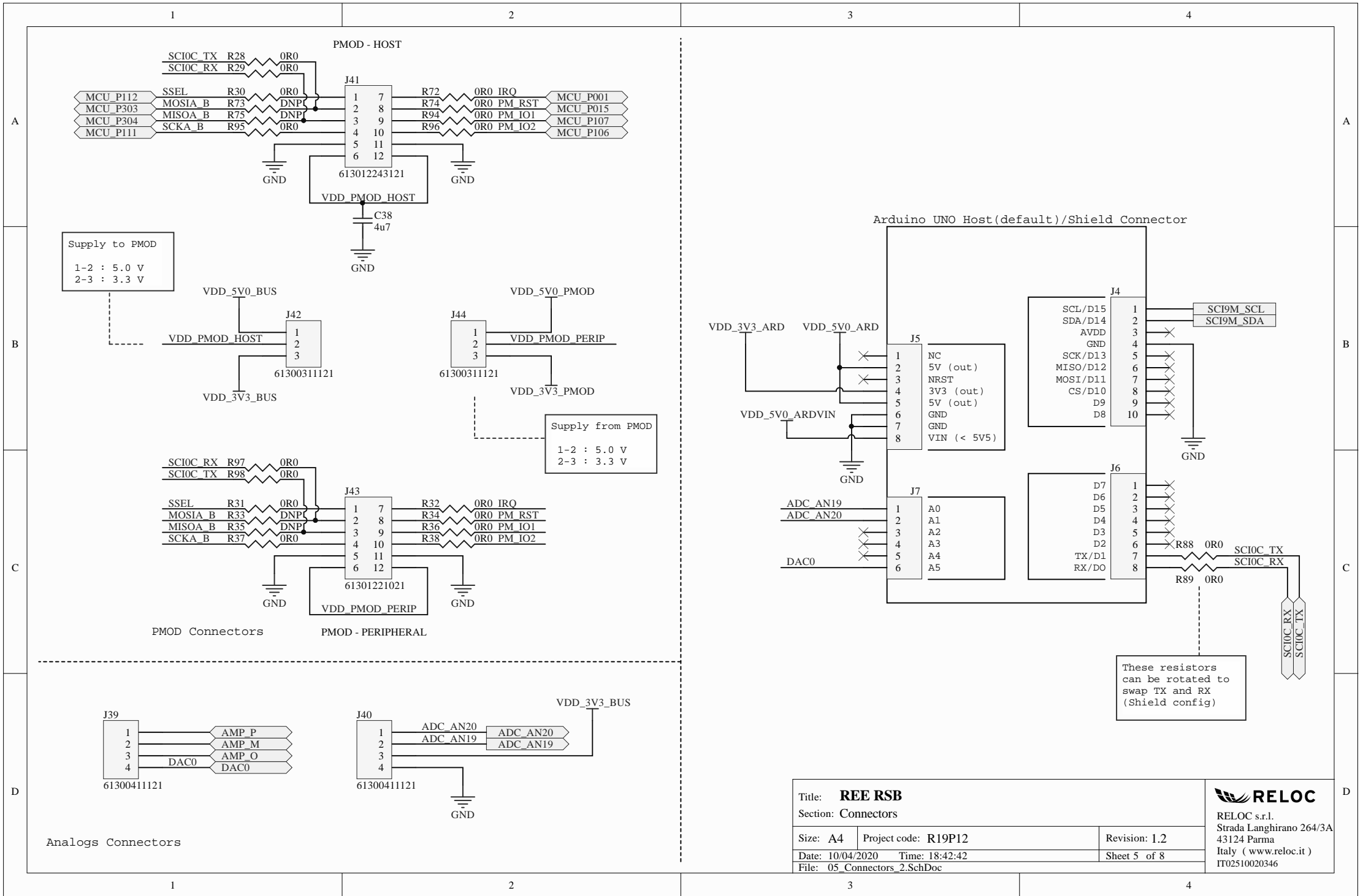
File: 04_Connectors_1.SchDoc

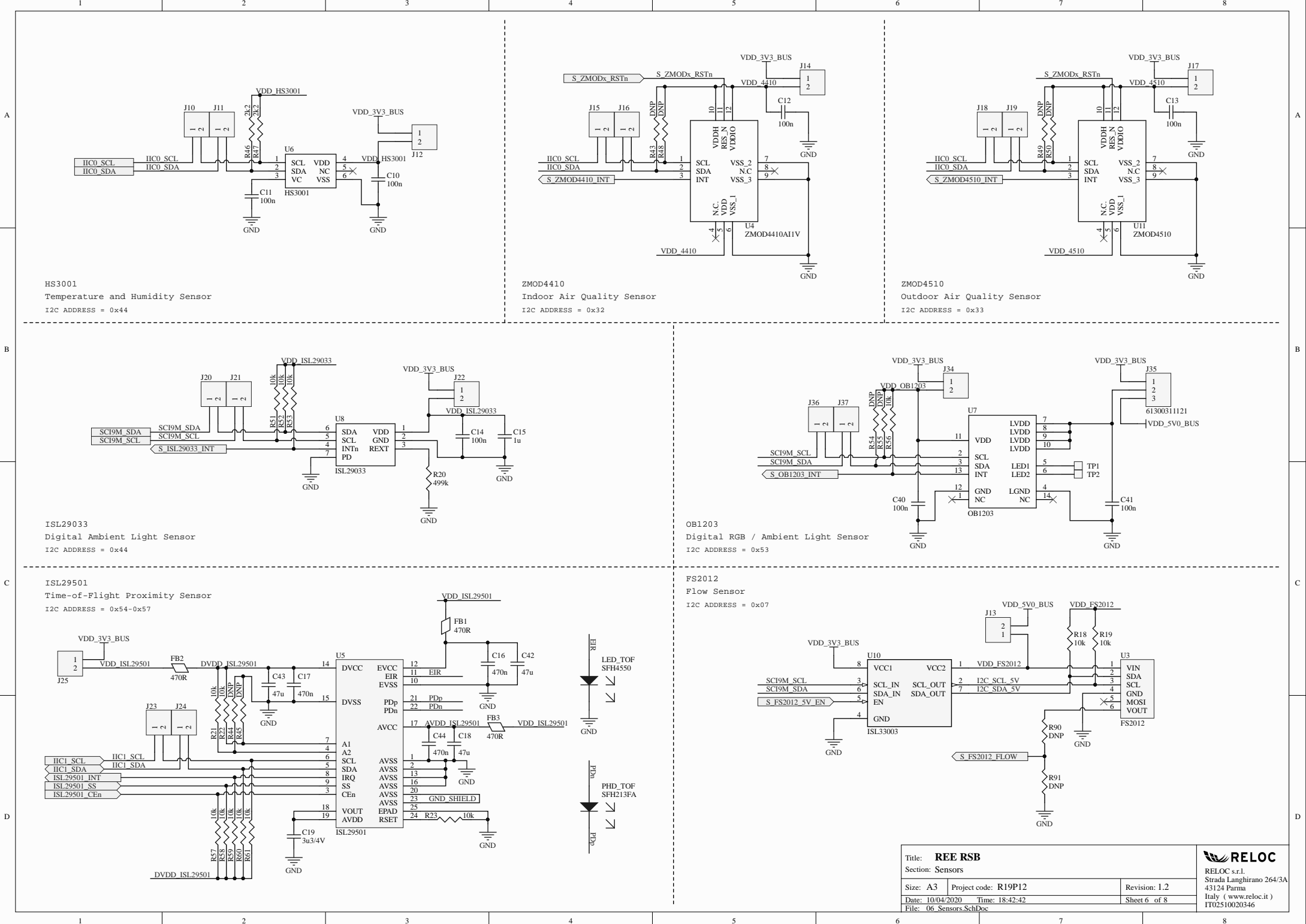
Revision: 1.2

Sheet 4 of 8

RELOC

RELOC s.r.l.
Strada Langhirano 264/3A
43124 Parma
Italy (www.reloc.it)
IT02510020346





HS3001
Temperature and Humidity Sensor
I2C ADDRESS = 0x44

ZMOD4410
Indoor Air Quality Sensor
I2C ADDRESS = 0x32

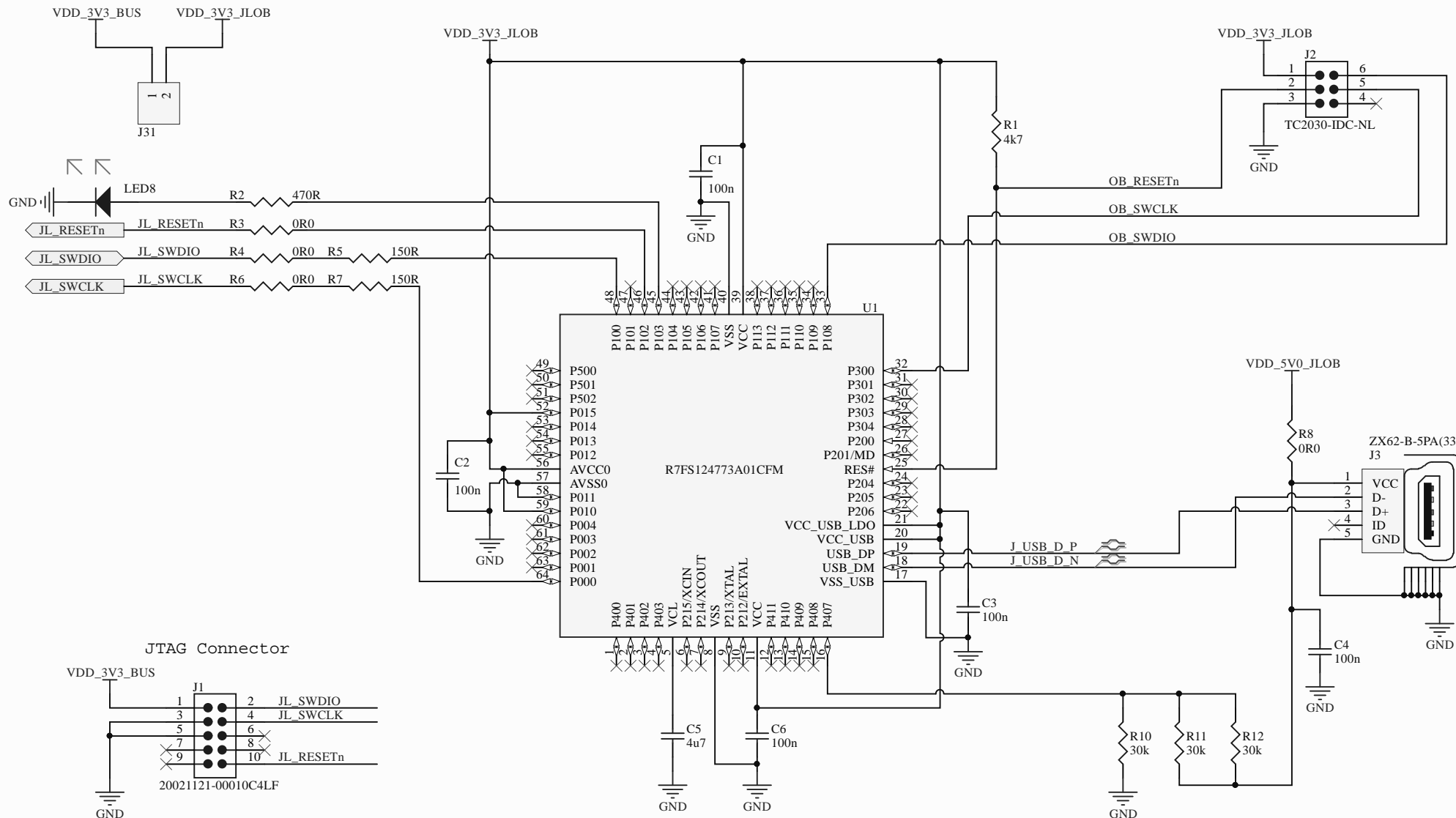
ZMOD4510
Outdoor Air Quality Sensor
I2C ADDRESS = 0x33


ISL29033
Digital Ambient Light Sensor
I2C ADDRESS = 0x44

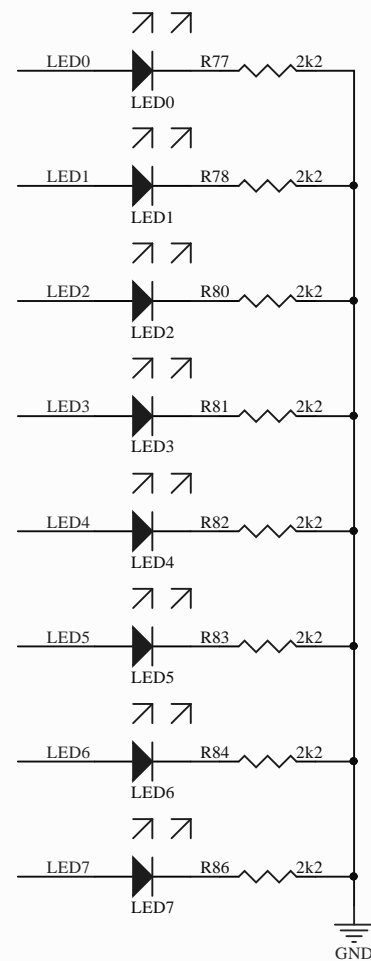
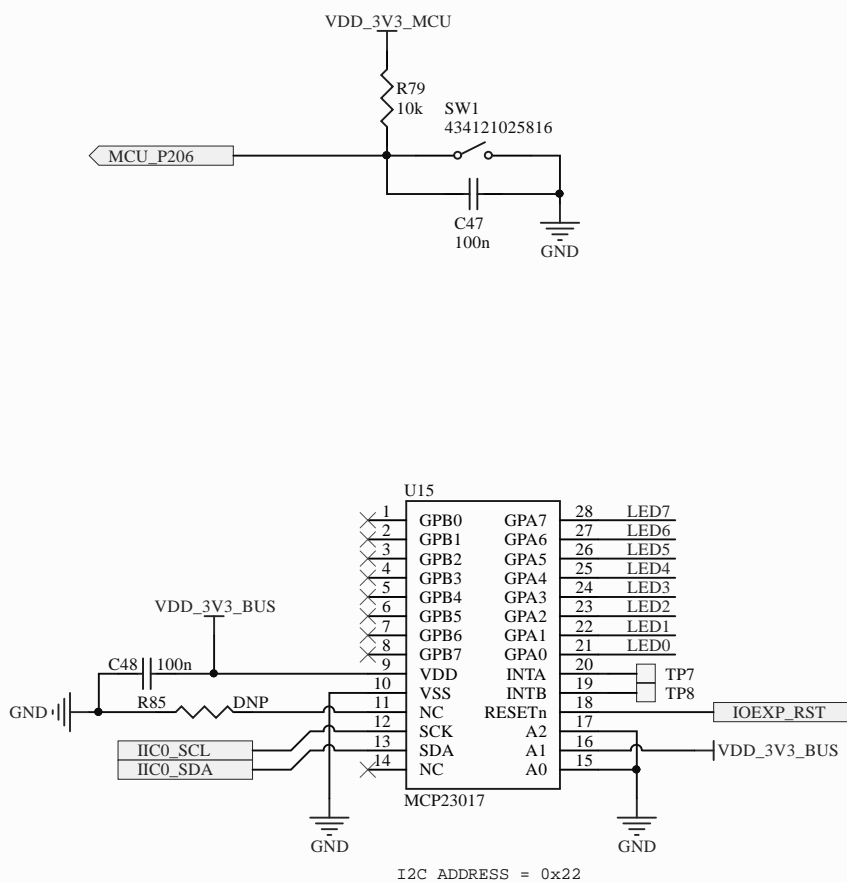
OB1203
Digital RGB / Ambient Light Sensor
I2C ADDRESS = 0x53

ISL29501
Time-of-Flight Proximity Sensor
I2C ADDRESS = 0x54-0x57

FS2012
Flow Sensor
I2C ADDRESS = 0x07



Title: REE RSB			 RELOC RELOC s.r.l. Strada Langhirano 264/3A 43124 Parma Italy (www.reloc.it) IT02510020346
Section: JTAG, J-Link On Board			
Size: A4	Project code: R19P12	Revision: 1.2	
Date: 10/04/2020	Time: 18:42:42	Sheet 7 of 8	
File: 07_JLink_OB.SchDoc			



Title: **REE RSB**

Section: UI

Size: A4

Project code: R19P12

Revision: 1.2

Date: 10/04/2020

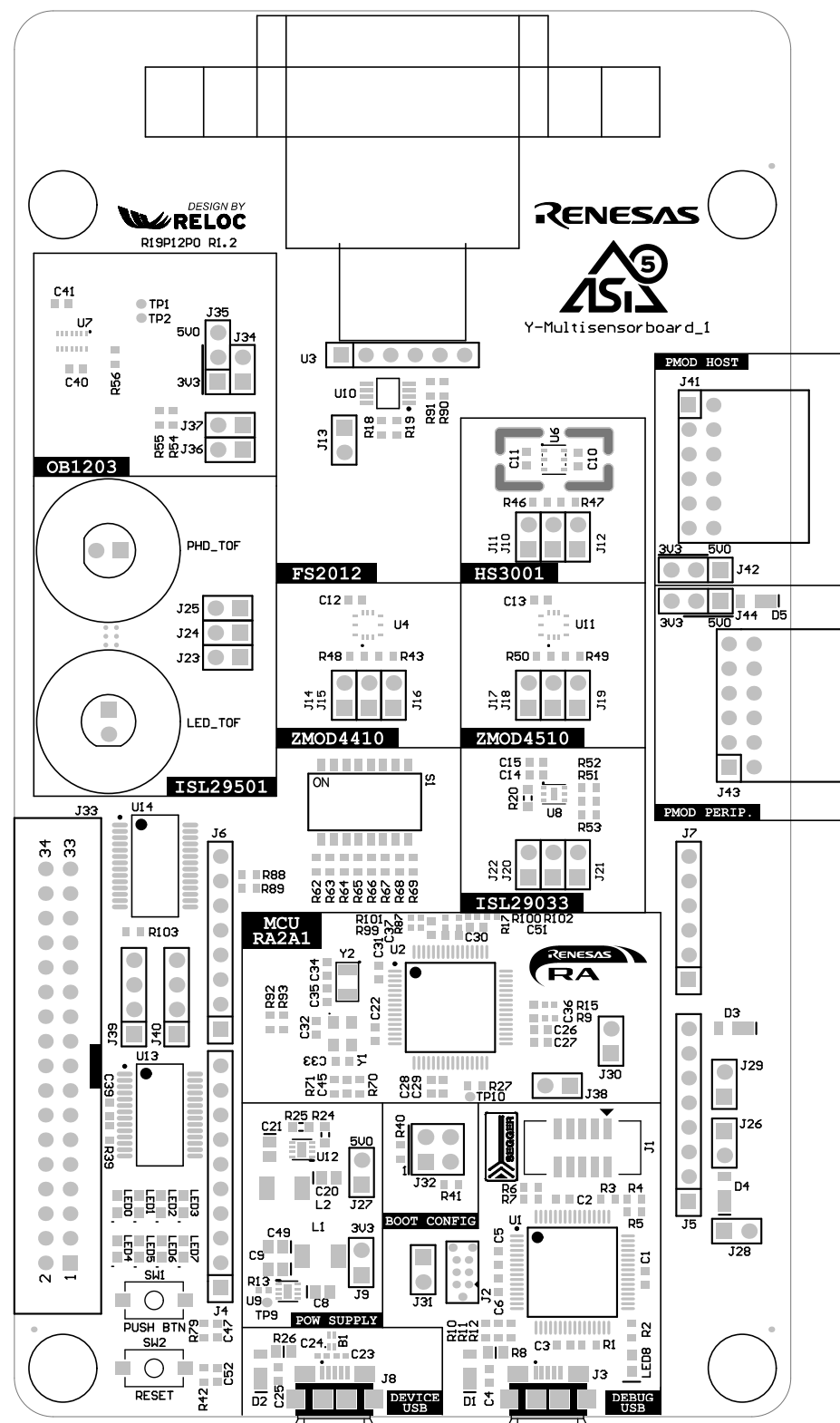
Time: 18:42:42

Sheet 8 of 8

File: 08_UI.SchDoc

RELOC

RELOC s.r.l.
Strada Langhirano 264/3A
43124 Parma
Italy (www.reloc.it)
IT02510020346



R72
R74
R94
R96

R30
R73
R28
R75
R29
R95

C38

R38
R36
R34
R32

R37
R35
R98
R33
R97
R31

R57
R44
R21
R60
R61
R45
R22
R59
R58

U5
R23
C16
C42

C4
C18
C19
FB2
FB3
FB1
C17
C43

TP4
TP6
R76
C46

TP5
TP3
C48
R85

U15

TP7
TP8

R81
R80
R78
R77
R86
R84
R83
R82

C50
R14
C2
R16

Y-Multisensorboard_1
R19P12P0 R1.2
Design by
RELOC s.r.l.
www.reloc.it