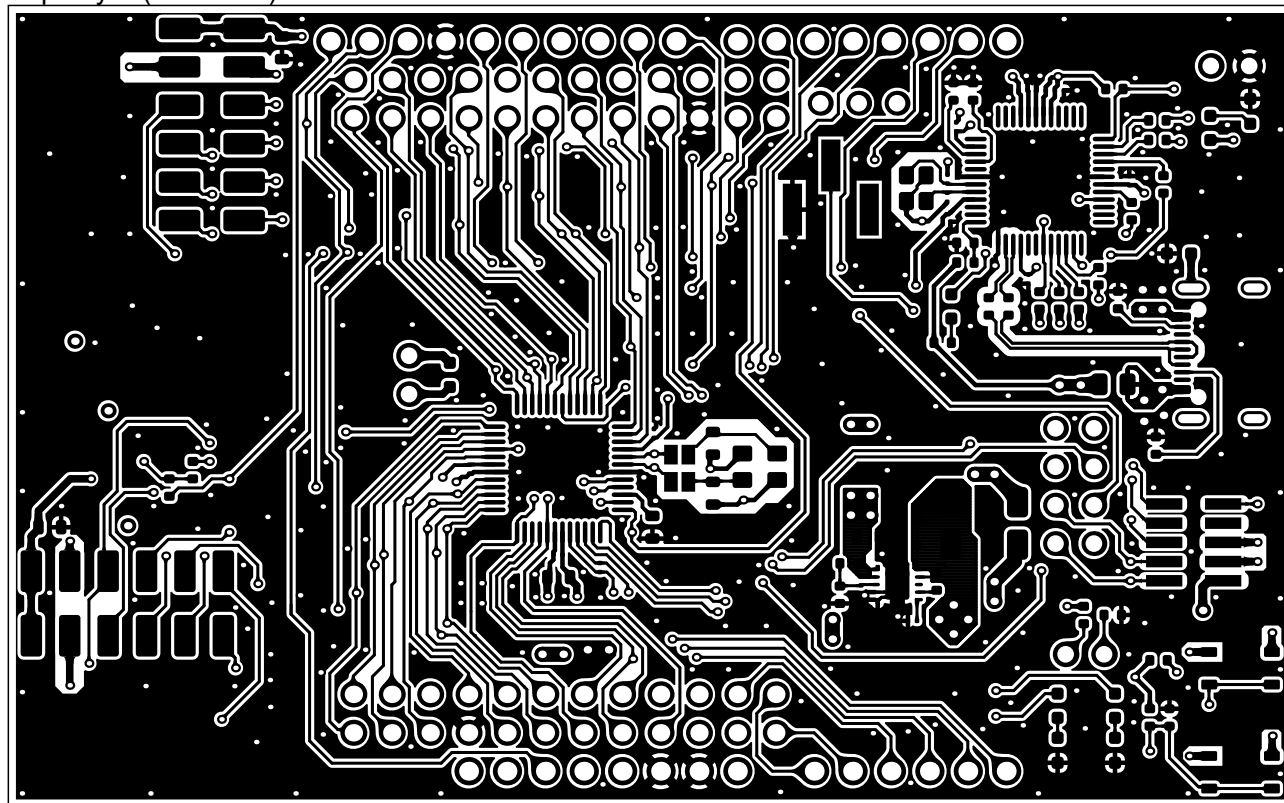
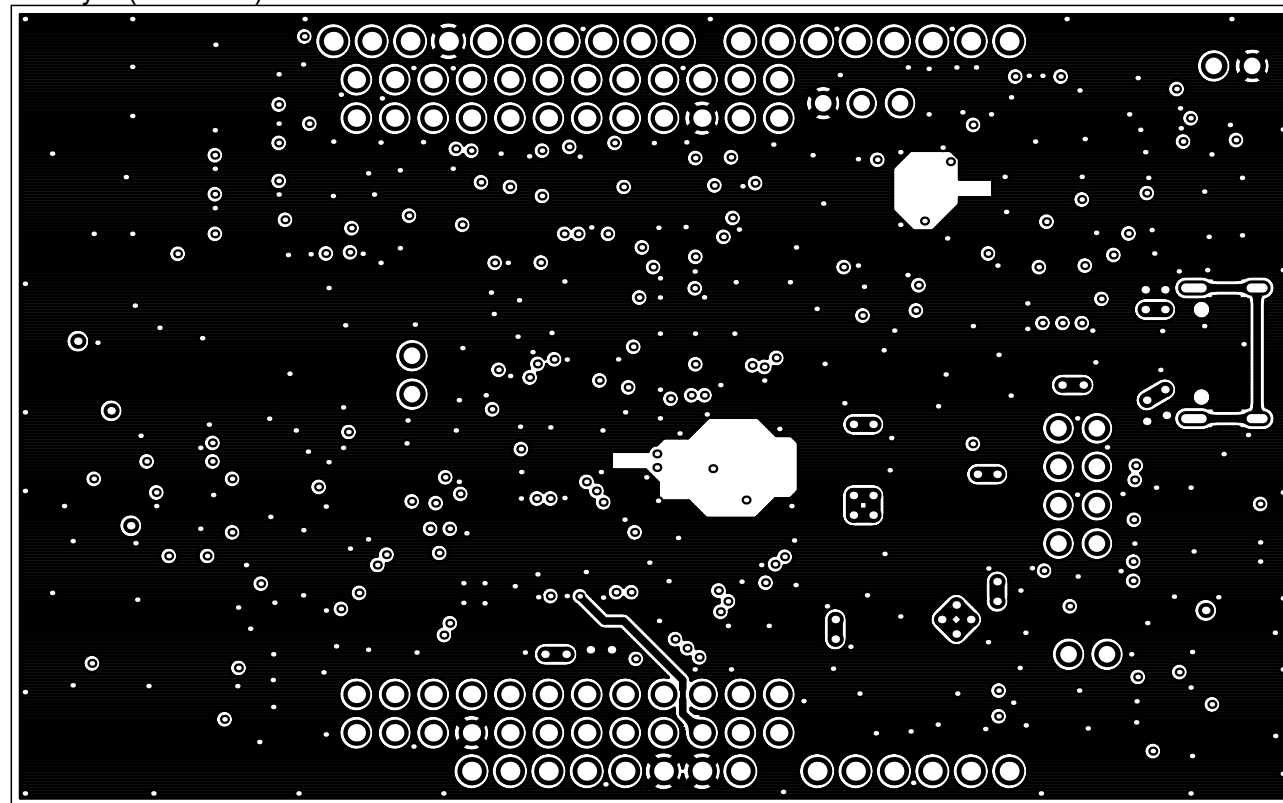


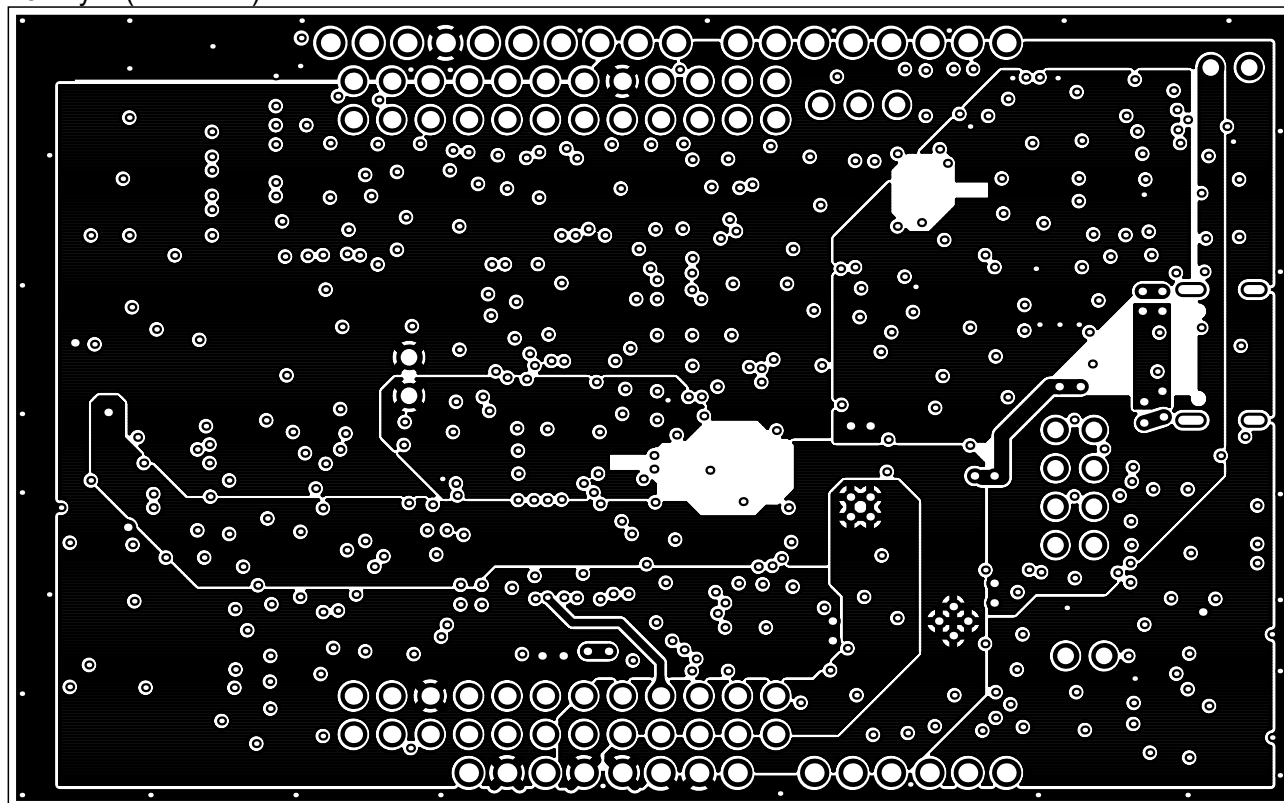
Top Layer (Scale 2:1)



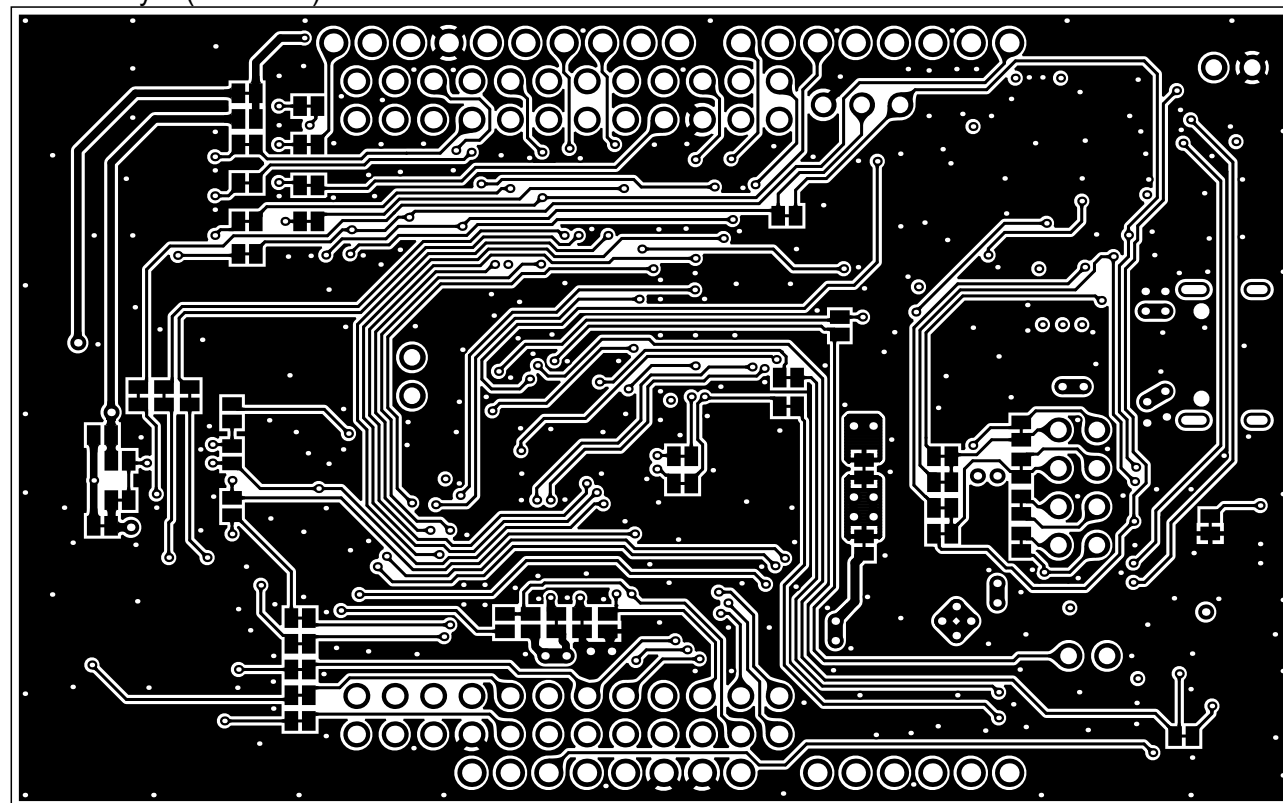
L2 Layer (Scale 2:1)



L3 Layer (Scale 2:1)



Bottom Layer (Scale 2:1)

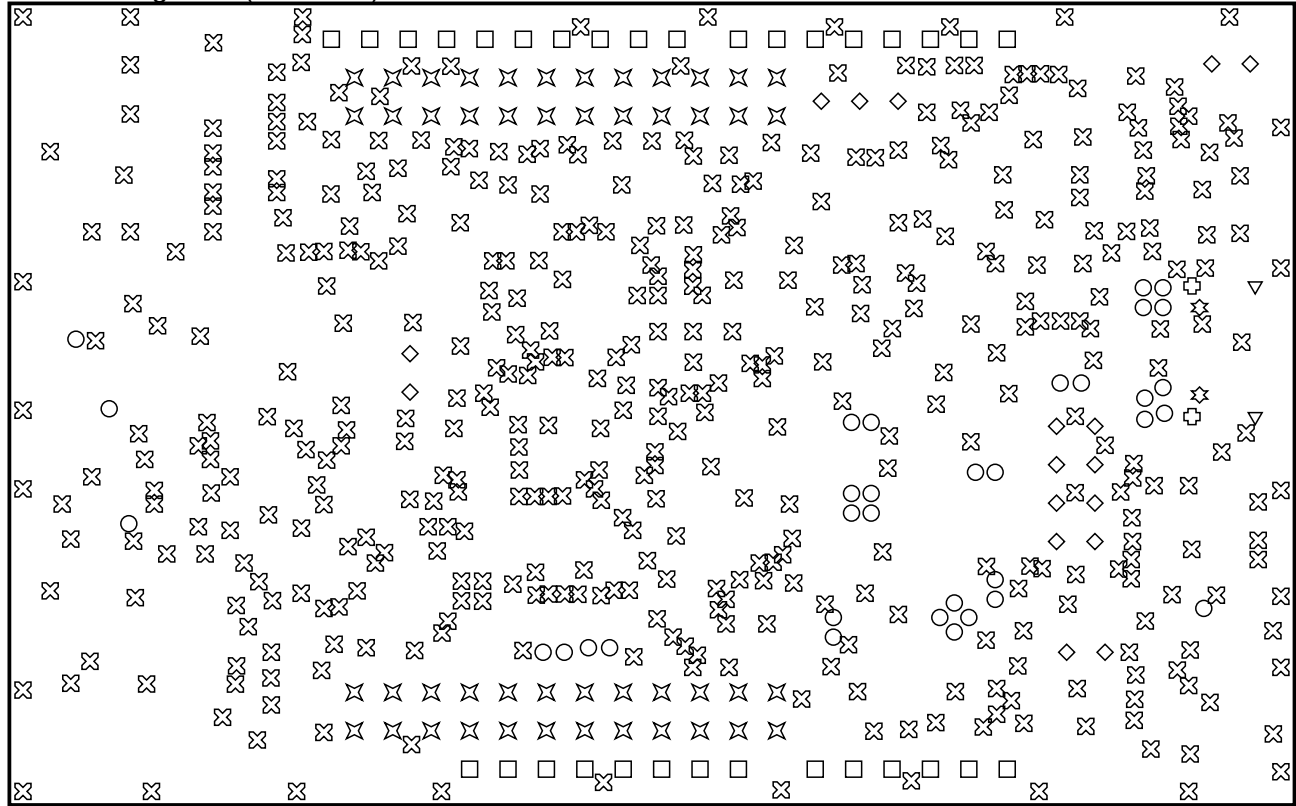


Layer Stack Legend

	Material	Layer	Thickness	Dielectric Material	Type	Gerber	Dk
		Top Overlay			Legend	GTO	
	Surface Material	Top Solder	0.030mm	Solder Resist	Solder Mask	GTS	3.5
	Nickel, Gold	Top Surface Finish	0.030mm		Surface Finish		
	Copper	Top Layer	0.018mm		Signal	GTL	
	Prepreg		0.215mm	FR-4	Dielectric		4.7
	Copper	L2 Layer	0.033mm		Signal	G1	
	Core		0.930mm	FR-4	Dielectric		4.7
	Copper	L3 Layer	0.033mm		Signal	G2	
	Prepreg		0.215mm	FR-4	Dielectric		4.7
	Copper	Bottom Layer	0.018mm		Signal	GBL	
	Nickel, Gold	Bottom Surface Finish	0.030mm		Surface Finish		
	Surface Material	Bottom Solder	0.030mm	Solder Resist	Solder Mask	GBS	3.5
		Bottom Overlay			Legend	GBO	
Total thickness: 1.582mm							

Zdiff =90 Ω, L/S =0.21/0.12

Drill Drawing View (Scale 2:1)



Drill Table

Symbol	Count	Hole Size	Plated	Hole Tolerance	Hole Length
⊗	454	0.300mm	Plated		
○	34	0.500mm	Plated		
▽	2	0.600mm	Plated		1.400mm
⊕	2	0.600mm	Plated		1.700mm
✱	2	0.650mm	Non-Plated		
◇	17	1.100mm	Plated		
⊗	48	1.150mm	Plated		
□	32	1.250mm	Plated		
	591 Total				