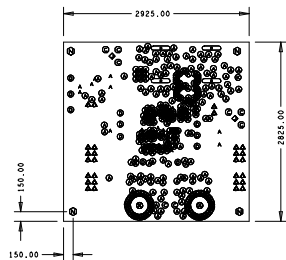


1 LAYER STACKING

SCALE: NONE

2 ADJUST CORE THICKNESS TO ACHIEVE
OVERALL BOARD THICKNESS SPECIFICATION



NOTES: UNLESS OTHERWISE SPECIFIED:

- THIS IS A 6 LAYER BOARD WITH COMPONENTS ON BOTH SIDES.
- SMT LAND PATTERNS THAT HAVE A FINISHED PAD WIDTH RANGING FROM .012 TO .015 MUST USE THE FOLLOWING TOLERANCE, $\pm .002$ -.0005. PB VENDOR TO ADJUST ARTWORK TO COMPENSATE FOR ETCH PROCESS.
- MANUFACTURE/FABRICATE TO MEET EU RoHS DIRECTIVE. ALL MATERIALS AND SOLDERMASK TO BE COMPLIANT TO EU RoHS DIRECTIVE 20002/95/EC. LAMINATE AND RESIN MATERIAL PARAMETERS
 $T_g > 170\text{ C}$
 $T_d > 294\text{ C}$
- SILKSCREEN BOTH SIDES WITH WHITE NON CONDUCTIVE EPOXY BASED INK
- IMMERSION GOLD FINISH
- MINIMUM SPACE .006"/TRACE .008"
- VIAS ARE COVERED WITH SOLDERMASK BUT NOT THE ONES ON TOP OF THE SMT PADS.
- RED SOLDER MASK

DRILL CHART: TOP to BOTTOM

ALL UNITS ARE IN MILS				
FIGURE	SIZE	TOLERANCE	PLATED	QTY
⊙	10.0	+0.0/-0.0	PLATED	347
⋄	10.0	+4.02/-7.99	PLATED	24
⊙	37.01	+0.0/-0.0	PLATED	6
⊙	40.0	+0.0/-0.0	PLATED	2
⊙	40.0	+0.0/-0.0	PLATED	11
⋄	40.98	+0.0/-0.0	PLATED	28
⋄	92.99	+0.0/-0.0	PLATED	2
⊙	100.0	+0.0/-0.0	PLATED	1
⊙	155.0	+0.0/-0.0	PLATED	2
⊙	127.99	+0.0/-0.0	NON-PLATED	4
⊞	300.0x70.0	+0.0/-0.0	PLATED	4

Drawn By: MARGARET SAVIO	Date Drawn: 08/14/15	Engineer: CHUN CHEUNG
Released By:	Date Released:	ISL682000EMD17_B
Updated By:	Date Updated:	
		WORK TO REV. B
FILENAME: ISL682000EMD17_B		SHEET