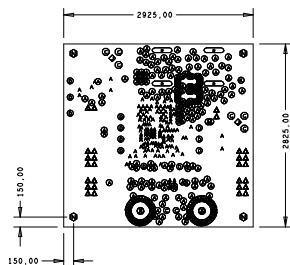


1 LAYER STACKING
SCALE: NONE

2 ADJUST CORE THICKNESS TO ACHIEVE



NOTES: UNLESS OTHERWISE SPECIFIED:

- 1 THIS IS A 6 LAYER BOARD WITH COMPONENTS ON BOTH SIDES.
- 2 SMT LAND PATTERNS THAT HAVE A FINISHED PAD WIDTH RANGING FROM .012 TO .015 MUST USE THE FOLLOWING TOLERANCE, +.002/- .0005. PB VENDOR TO ADJUST ARTWORK TO COMPENSATE FOR ETCH PROCESS.
- 3 MANUFACTURE/FABRICATE TO MEET EU RoHS DIRECTIVE. ALL MATERIALS AND SOLDERMASK TO BE COMPLIANT TO EU RoHS DIRECTIVE 20002/95/EC
LAMINATE AND RESIN MATERIAL PARAMETERS
Tg > 170 C
Td > 294 C
- 4 SILKSCREEN BOTH SIDES WITH WHITE NON CONDUCTIVE EPOXY BASED INK
- 5 IMMERSION GOLD FINISH
- 6 MINIMUM SPACE .006"/TRACE .008"
- 7 VIAS ARE COVERED WITH SOLDERMASK BUT NOT THE ONES ON TOP OF THE SMT PADS.
- 8 RED SOLDER MASK

DRILL CHART: TOP to BOTTOM

ALL UNITS ARE IN MILS				
FIGURE	SIZE	TOLERANCE	PLATED	QTY
⊙	10.0	+0.0/-0.0	PLATED	249
△	10.0	+4.02/-7.988	PLATED	149
⊙	37.012	+0.0/-0.0	PLATED	6
⊙	40.0	+0.0/-0.0	PLATED	2
⊙	40.0	+0.0/-0.0	PLATED	12
△	40.98	+0.0/-0.0	PLATED	28
◇	92.988	+0.0/-0.0	PLATED	2
⊙	100.0	+0.0/-0.0	PLATED	1
⊙	155.0	+0.0/-0.0	PLATED	2
⊙	127.988	+0.0/-0.0	NON-PLATED	4
⊐	300.0x70.0	+0.0/-0.0	PLATED	4

Drawn By: MARGARET SAVIO 919/405-3625	Date Drawn: 08/28/15	Engineer: CHUN CHEUNG 908/685-6023
Released By:	Date Released:	ISL68201_99140DEMO1
Updated By:	Date Updated:	
		FILENAME: ISL68201_99140DEMO1 REV A SHEET