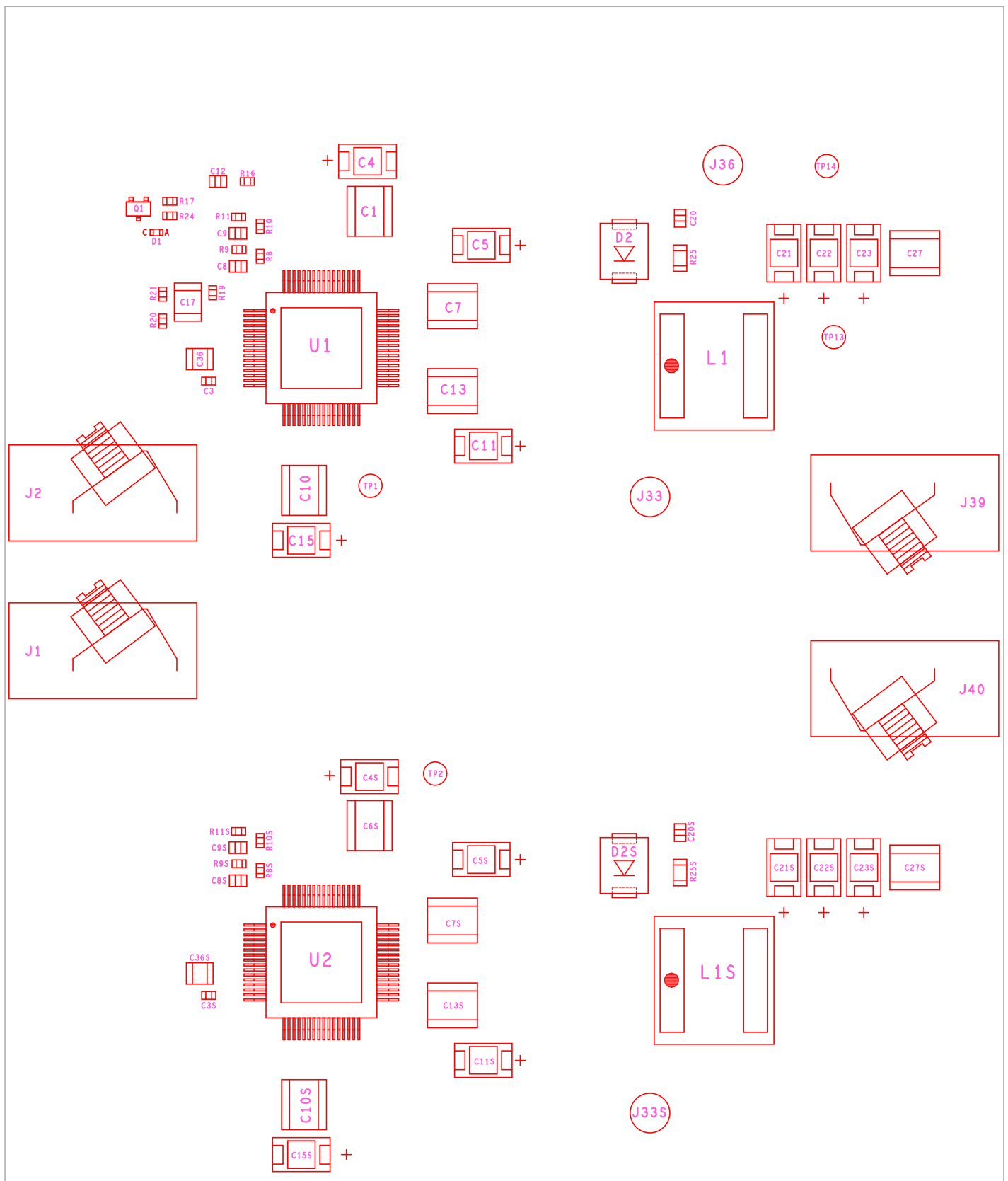


ISL70002SEHDEMO1Z REV.A

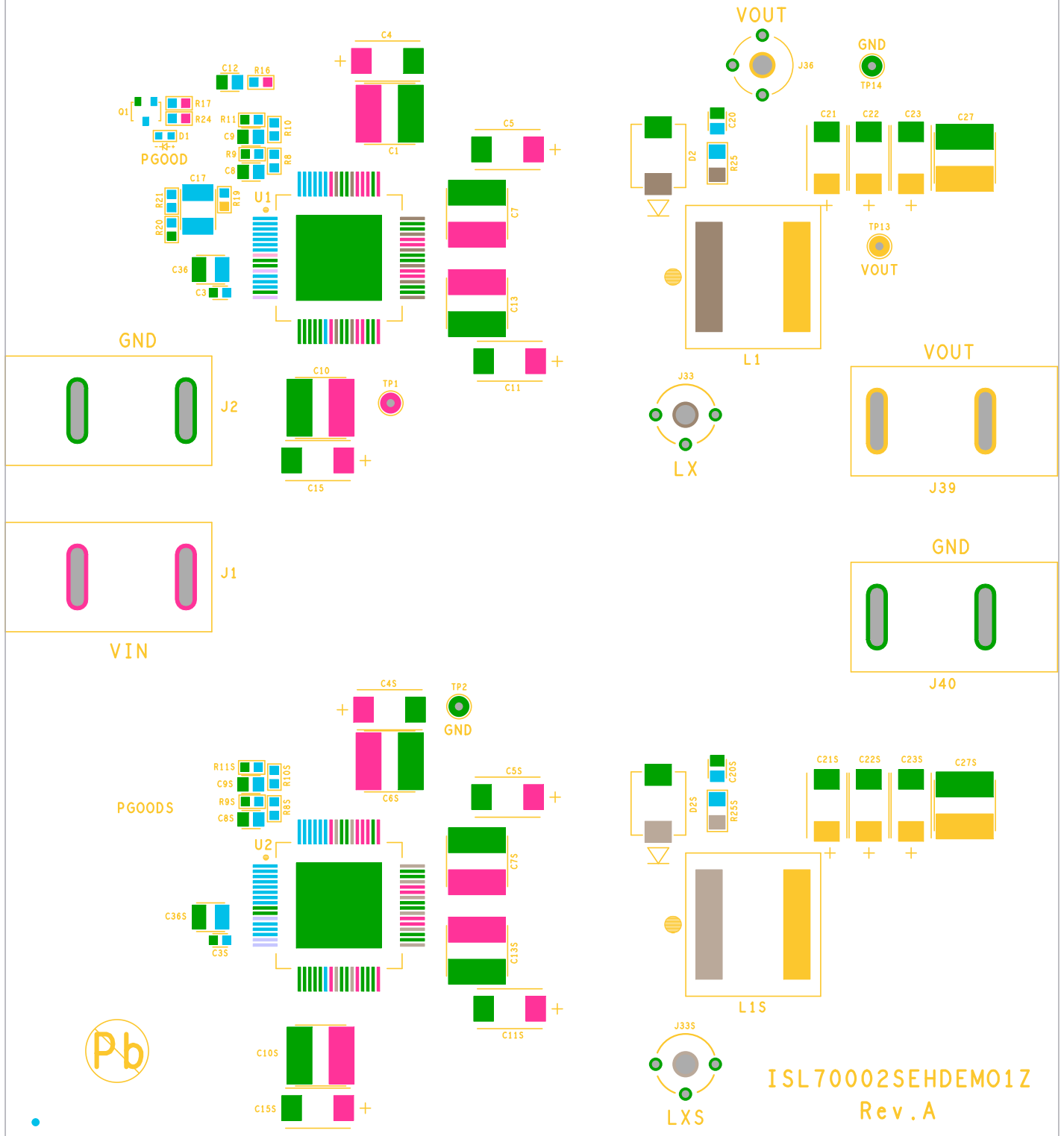


ASSEMBLY TOP

INTERSIL CORPORATION

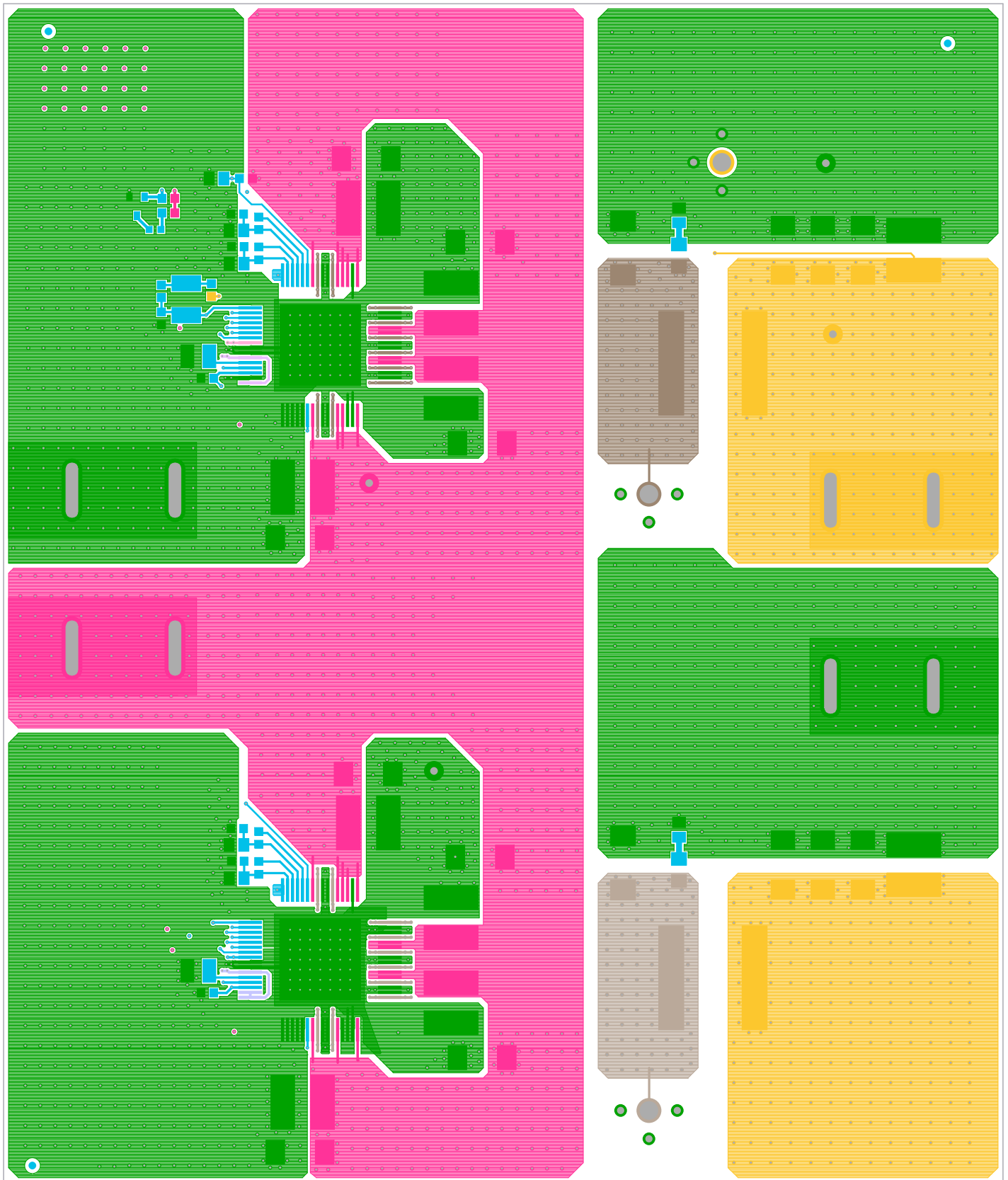
01-25-2018

intersil



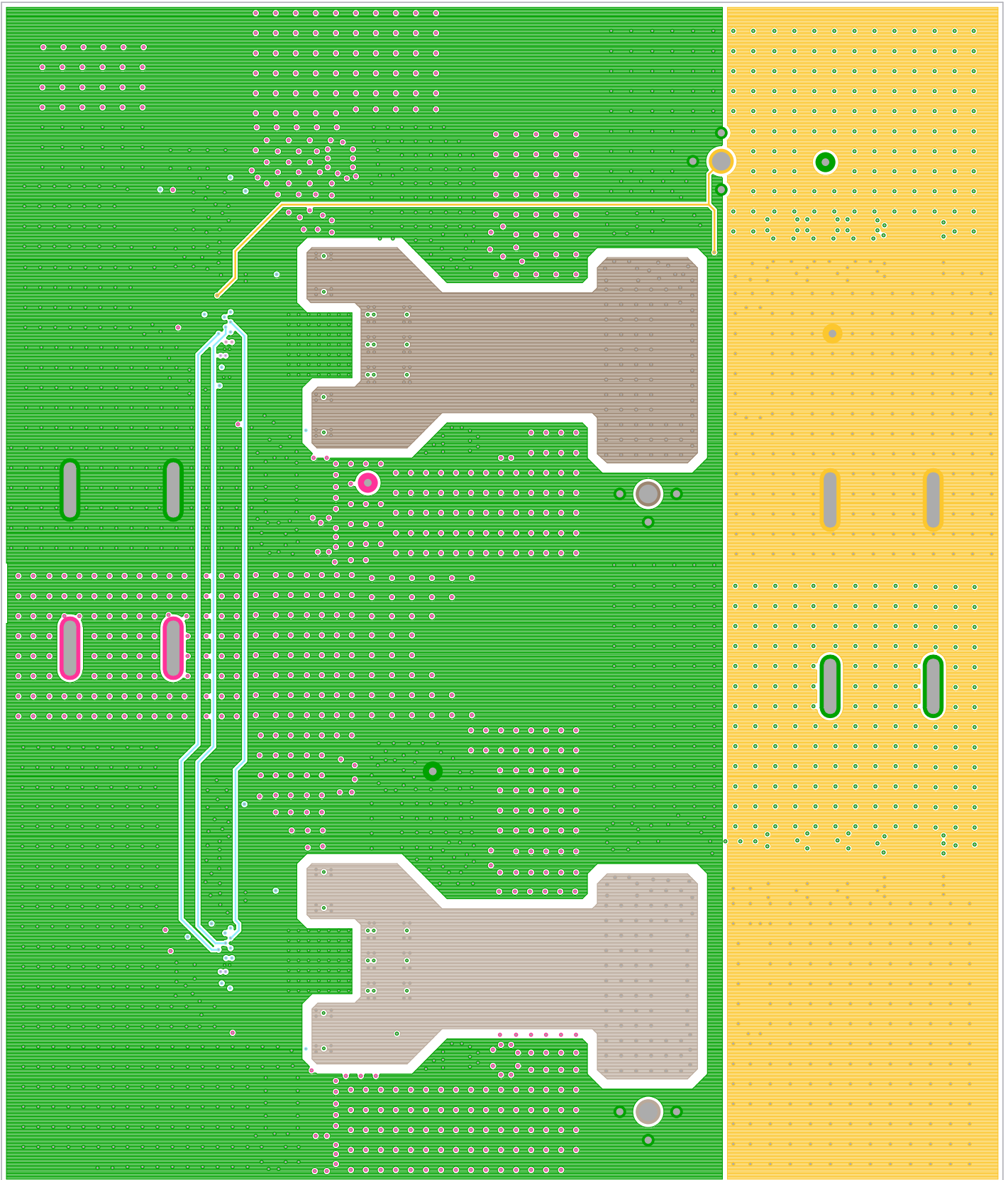
ISL70002SEHDEMO1Z
Rev.A

SILK SCREEN TOP
 INTERSIL CORPORATION
 01-25-2018



TOP LAYER COMPONENT SIDE
INTERSIL CORPORATION
01-25-2018

ISL70002SEHDEMO1Z REV.A

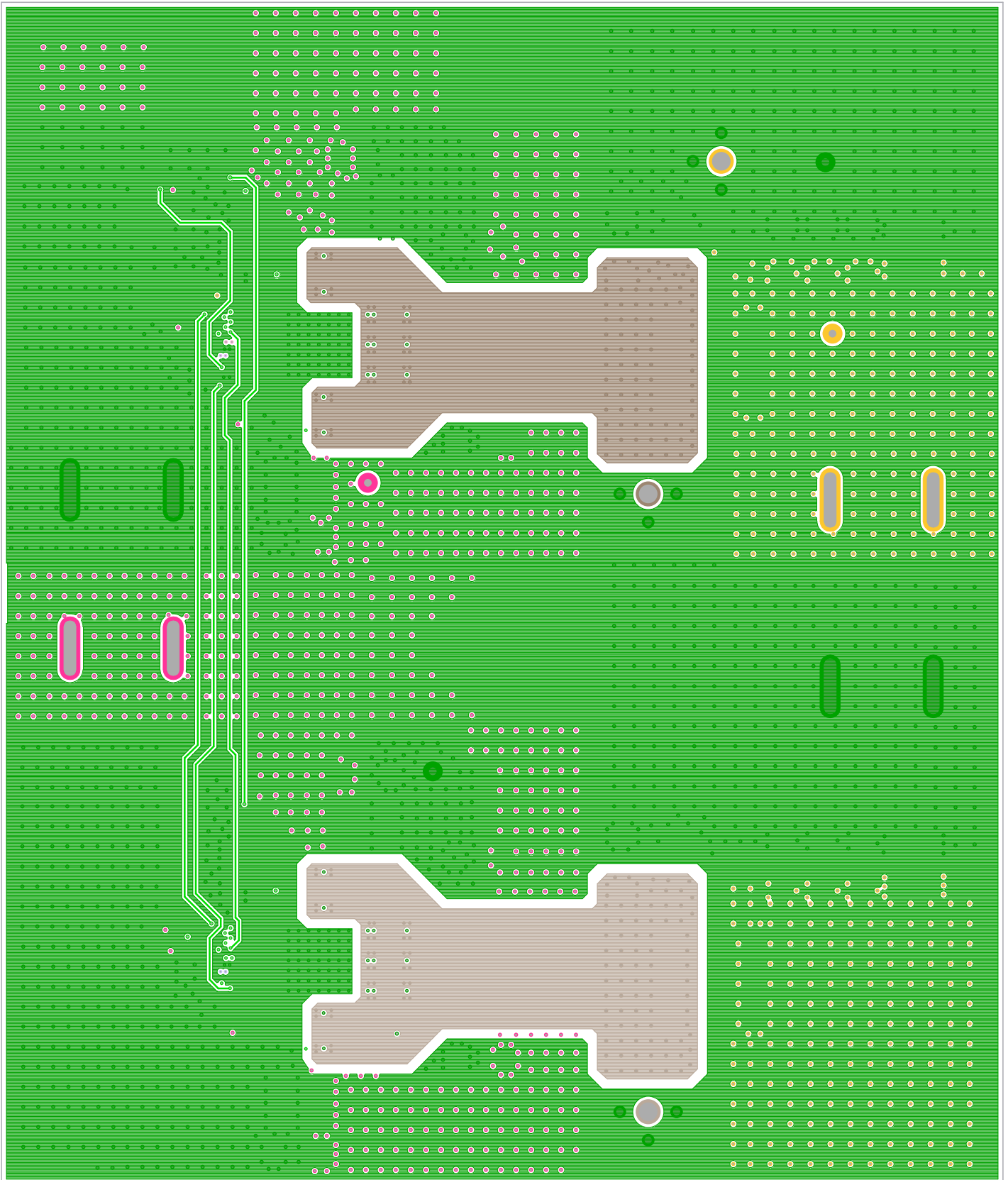


LAYER 2

INTERSIL CORPORATION

01-25-2018

ISL70002SEHDEMO1Z REV.A

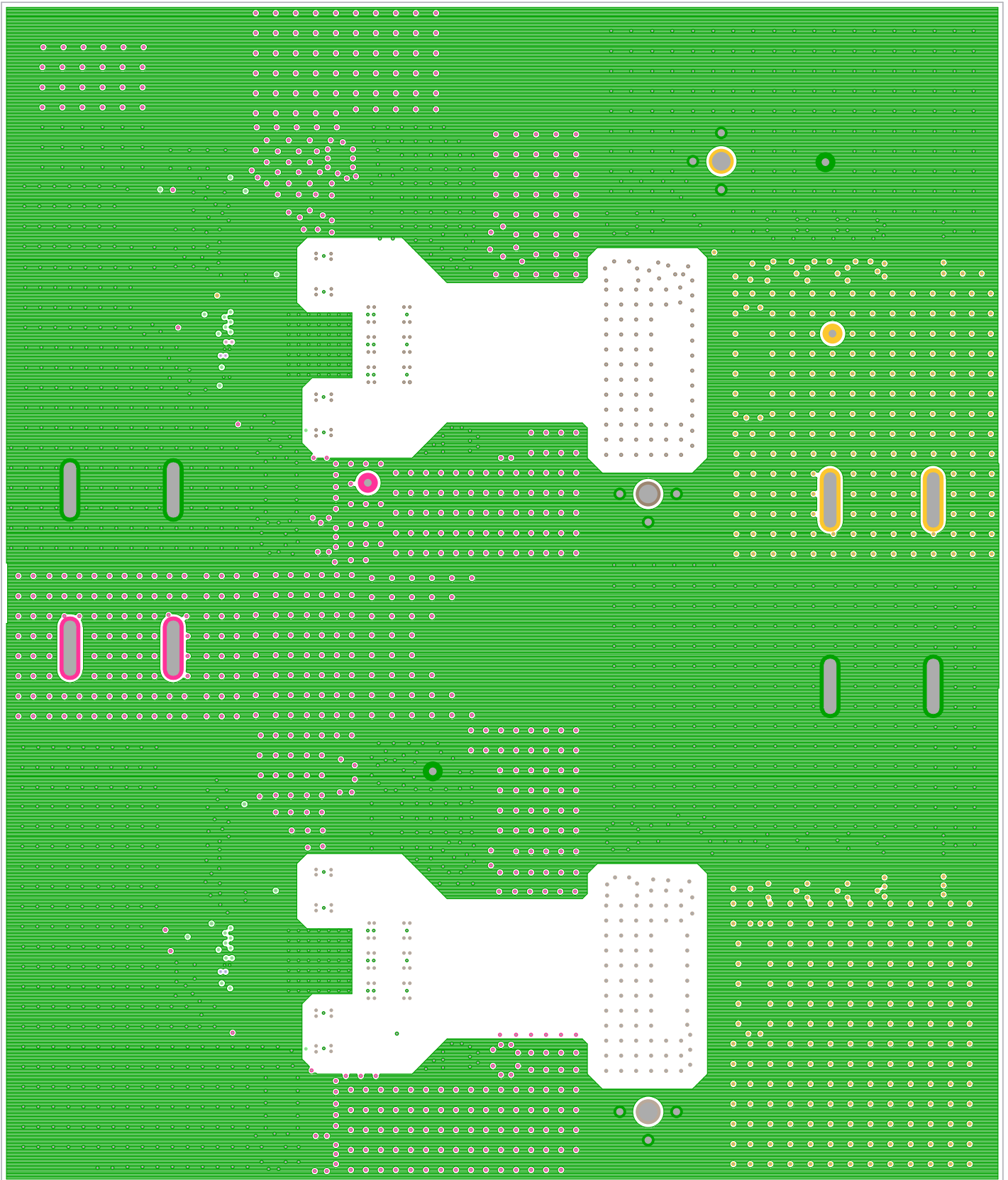


LAYER 3

INTERSIL CORPORATION

01-25-2018

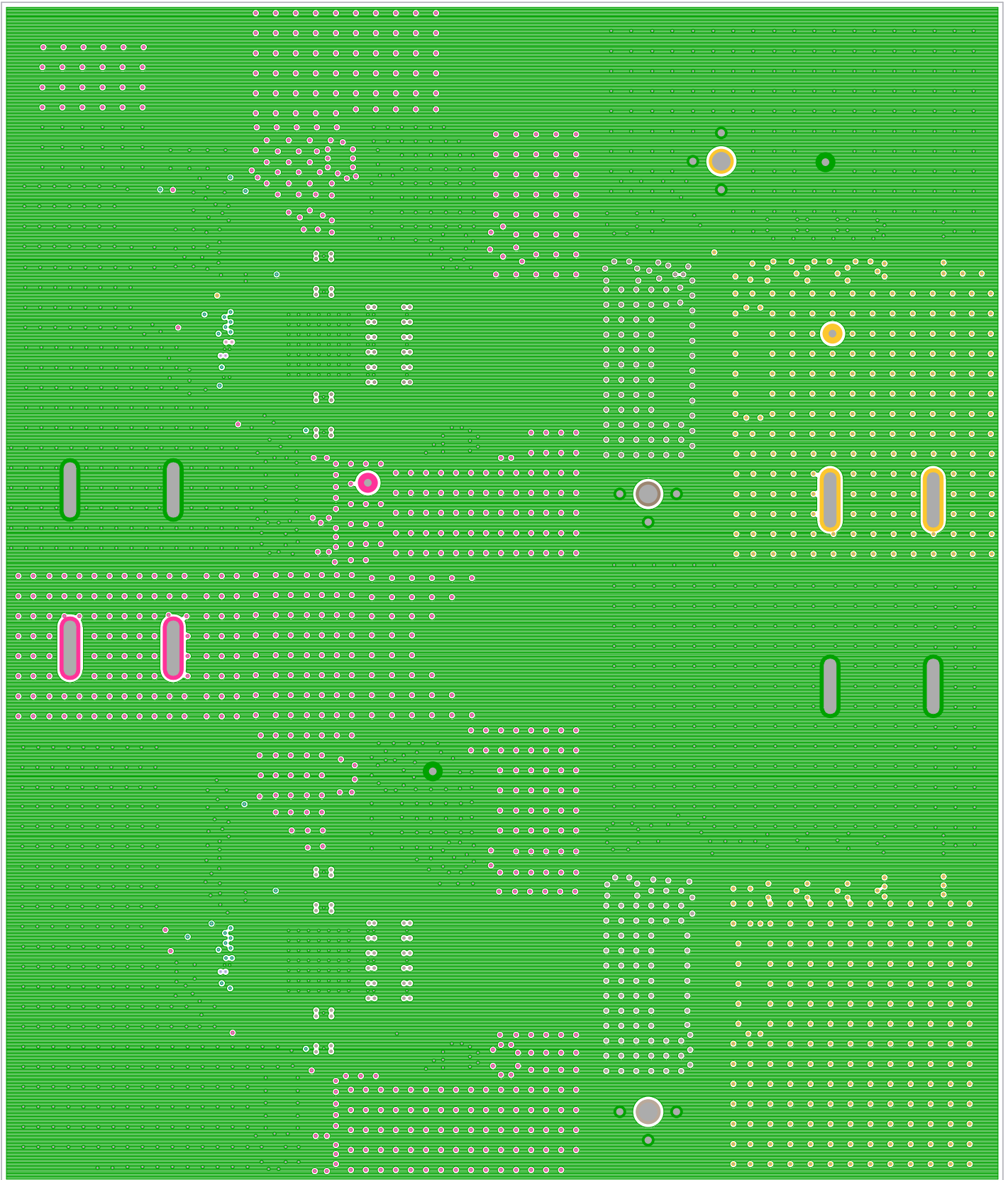
ISL70002SEHDEMO1Z REV.A



LAYER 4

INTERSIL CORPORATION

01-25-2018

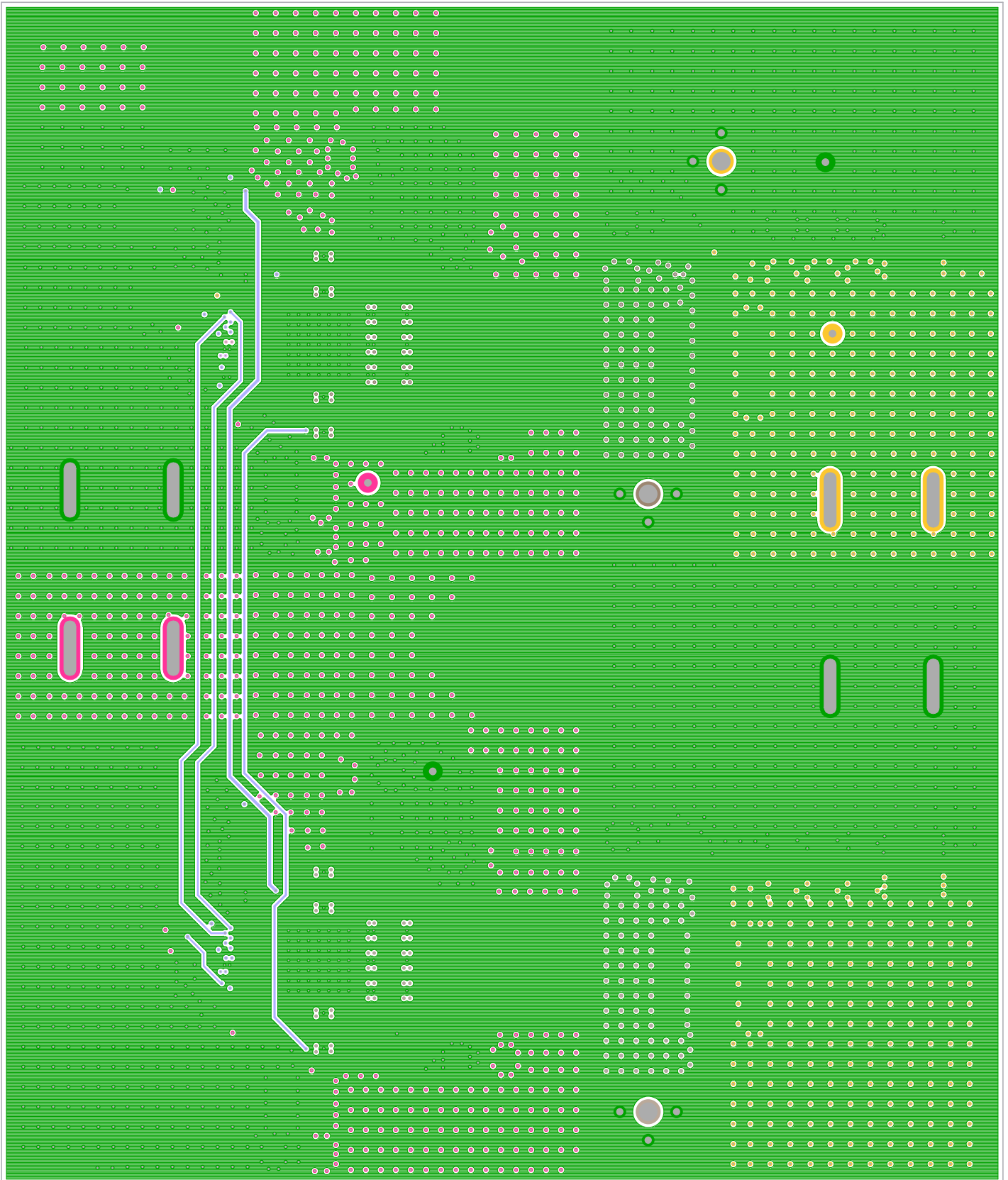


LAYER 5

INTERSIL CORPORATION

01-25-2018

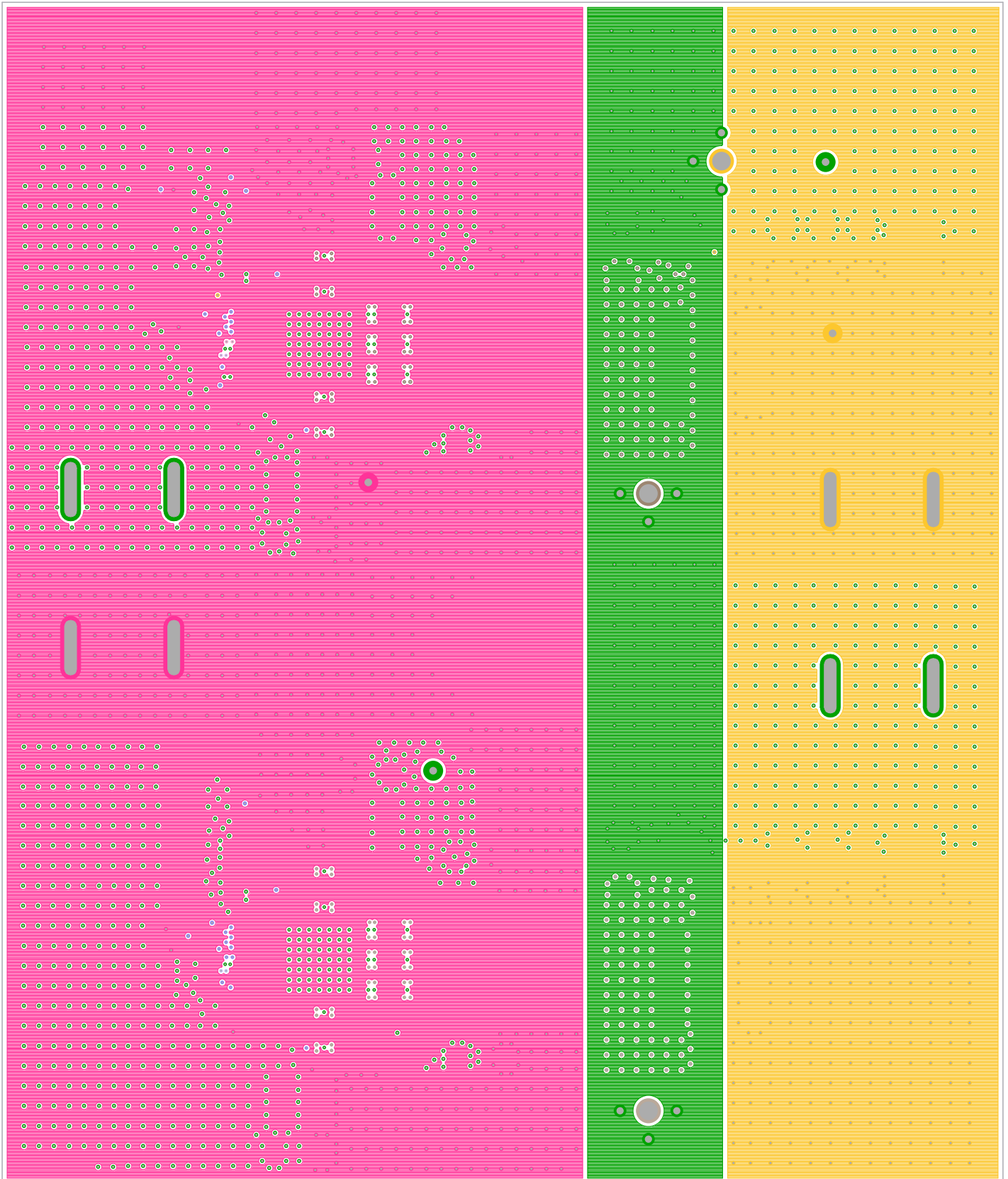
ISL70002SEHDEMO1Z REV.A



LAYER 6

INTERSIL CORPORATION

01-25-2018

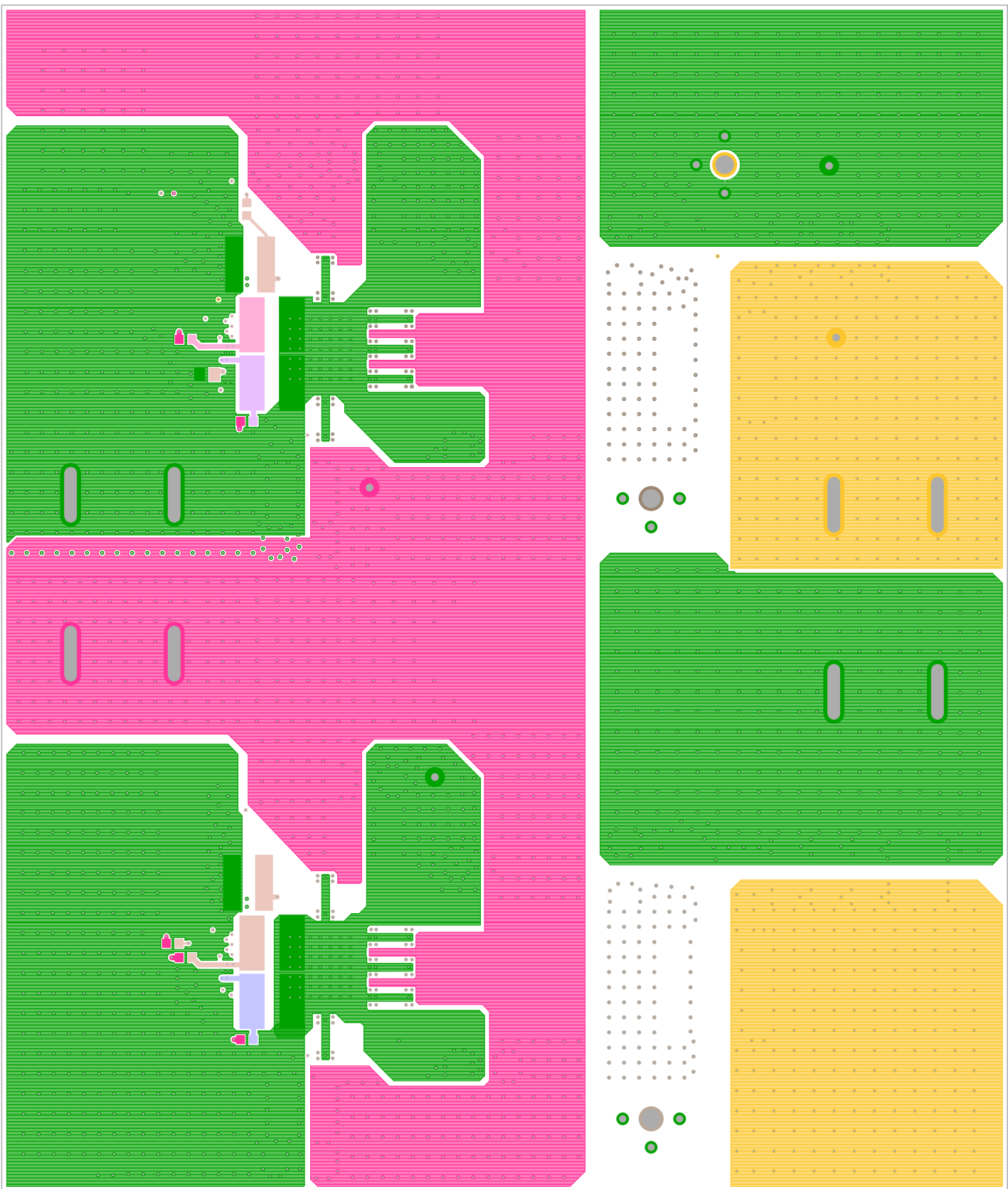


LAYER 7

INTERSIL CORPORATION

01-25-2018

ISL70002SEHDEMO1Z REV.A

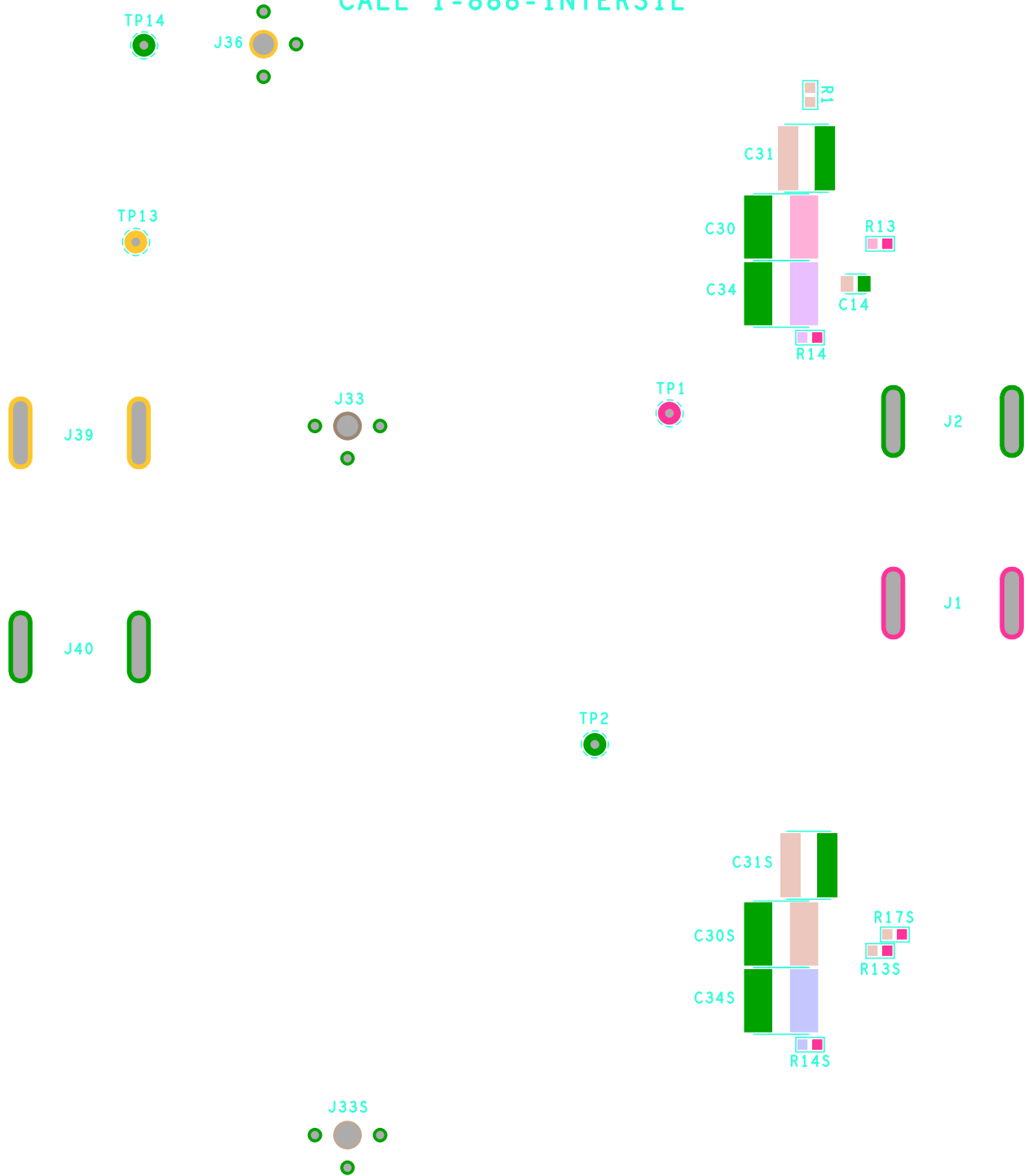


BOTTOM LAYER SOLDER SIDE LAYER 8
INTERSIL CORPORATION
01-25-2018

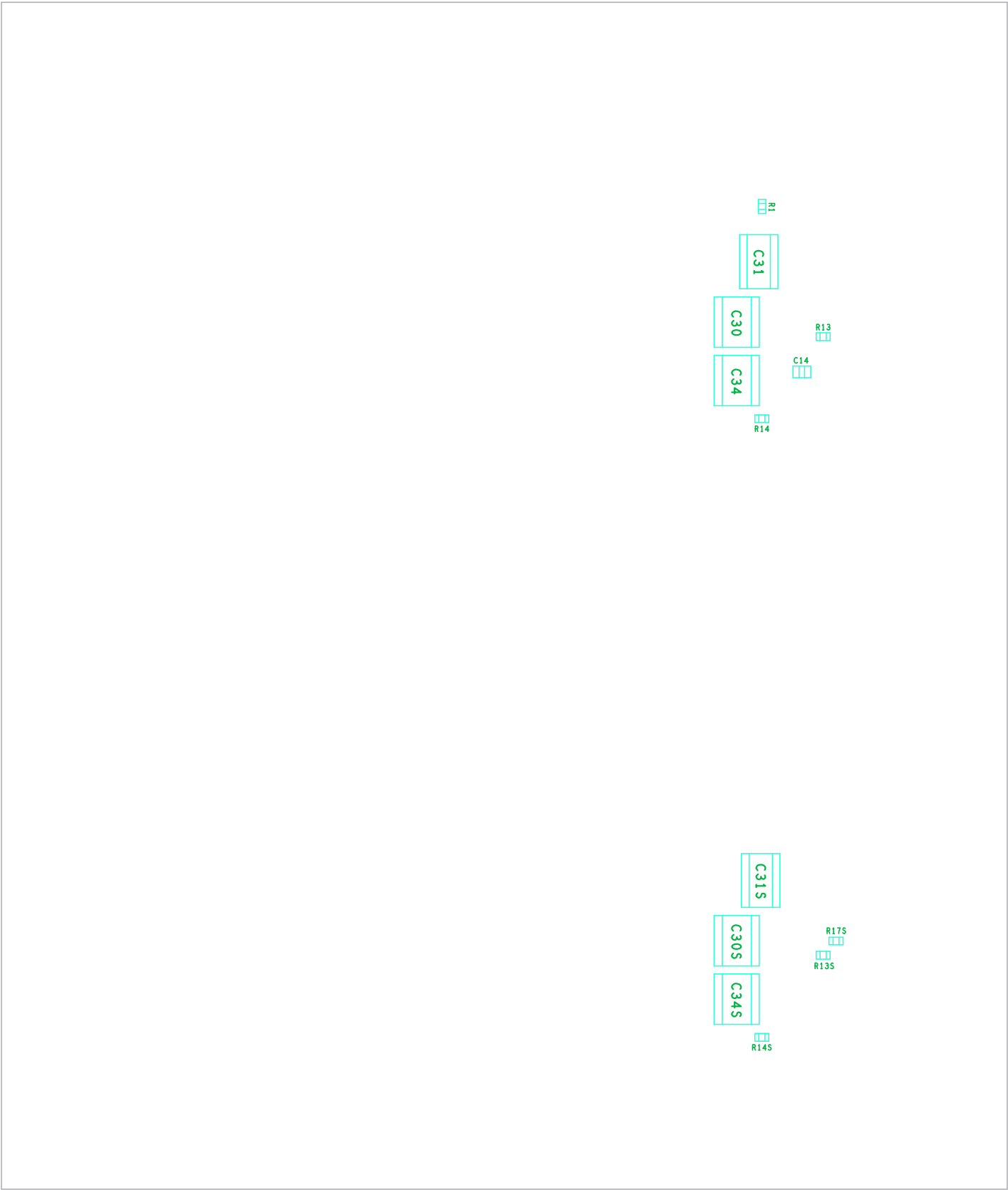
SILK SCREEN BOTTOM
INTERSIL CORPORATION
01-25-2018

intersil

CALL 1-888-INTERSIL



01-52-5018
INTERCIL CORPORATION
ASSEMBLY BOTTOM

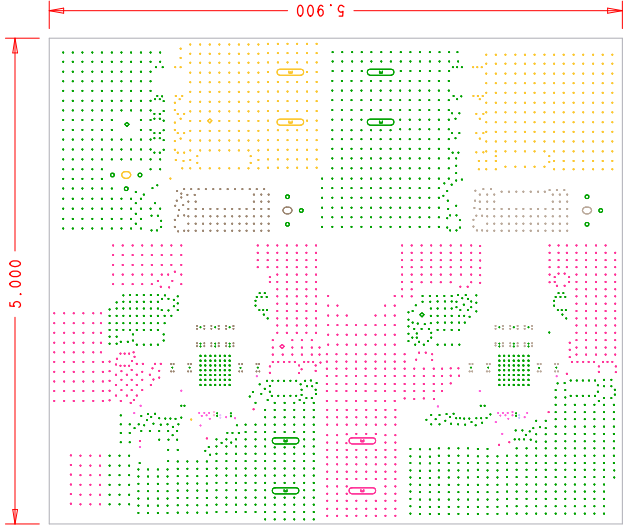


ISL700052EHDEM01Z REV.A

PHYSICAL BOARD DIMENSIONS
& LAYER STRUCTURE

	SILK TOP	silkt.art
	MASK TOP	maskt.art
	COMPONENT	layer1.art
	LAYER 2	layer2.art
	LAYER 3	layer3.art
	LAYER 4	layer4.art
	SOLDER	maskb.art
	MASK BOTTOM	silkb.art
	SILK BOTTOM	

.062" +/- 10%



DRILL CHART: TOP to BOTTOM ALL UNITS ARE IN MILS			
FIGURE	SIZE	PLATED	QTY
.	10.0	PLATED	137
.	11.0	PLATED	98
.	12.0	PLATED	2582
o	37.0	PLATED	9
o	40.0	PLATED	4
o	93.0	PLATED	3
o	274.0x60.0	PLATED	8

NOTES :

1. THIS BOARD IS RoHS COMPLIANT .
2. PRINTED WIRING BOARD DESIGN AND ACCEPTANCE CRITERIA SHALL BE IAW WITH THE REQUIREMENTS OF IPC-D-275 AND IPC-A-600 .
3. MATERIAL : FR4 (RoHS COMPLIANT) - 2 OZ COPPER
4. APPLY SOLDER MASK, BOTH SIDES OVER BARE COPPER IAW IPC-SM-840 . CLASS 2 (LPI) (BLUE MASK) .
5. ALL PATTERNS ARE VIEWED FROM THE PRIMARY SIDE LOOKING THROUGH THE BOARD .
6. UNLESS OTHERWISE SPECIFIED ALL HOLE DIAMETERS ARE AFTER PLATING .
7. APPLY SILKSCREEN USING WHITE NON-CONDUCTIVE EPOXY BASED INK .
8. PWB MUST BE 100% ELECTRICALLY TESTED FOR SHORTS AND CONTINUITY . USE NETLIST PROVIDED ISL70004SEHDEM017A_IPC356_IPC IAW IPC-D-356 .
9. MARK DATE CODE AND MANUFACTURES IDENTIFICATION ON SOLDER SIDE PER IPC-6011 AND IPC-6012 .
10. TOLERANCE ON ALL DRILL HOLES SHALL BE IAW IPC-D-2221 & 2222 UNLESS OTHERWISE SPECIFIED .
11. VIA20C11P (11 mil) VIA'S ARE TO BE FILLED WITH THERMAL NON-CONDUCTIVE EPOXY AND CAPPED .

Drawn By:	Date Drawn:	ISL70002SEH	
Tim Klemann	01/25/2018	DEMO BOARD	
Engineer:	Date Released:	LAYOUT	
Larry Gough	01/25/2018		
Updated By:	Date Updated:		
		MASK#	REV.
		ISL70002SEHDEM017	A
intersil		FILENAME:	SHEET
		~/ISL70002SEH/ISL70002SEHDEM017A	1 OF 1