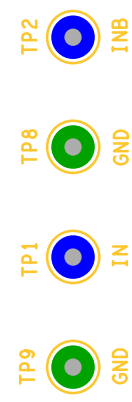
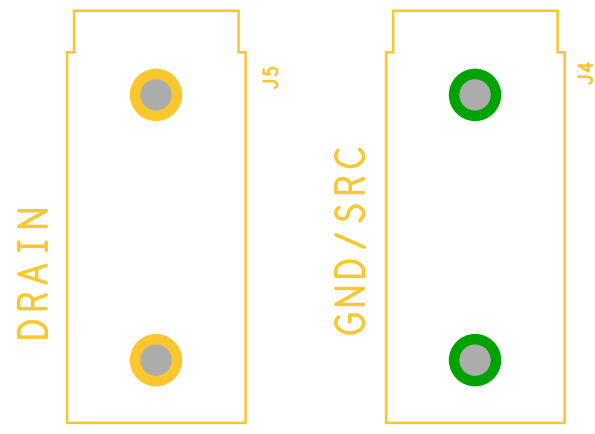
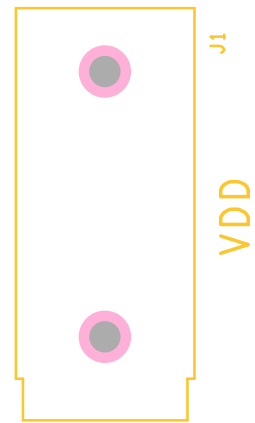
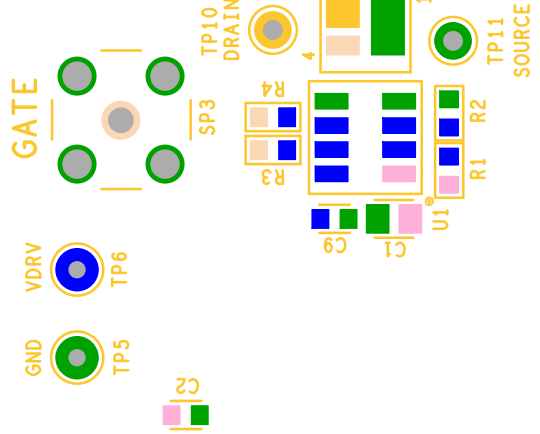
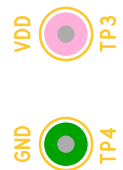
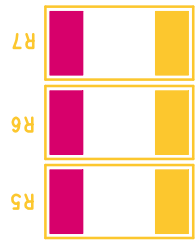
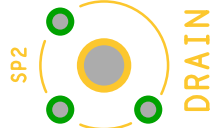
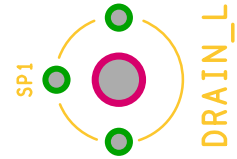


ASSEMBLY TOP  
INTERFIL CORPORATION  
08-04-2017

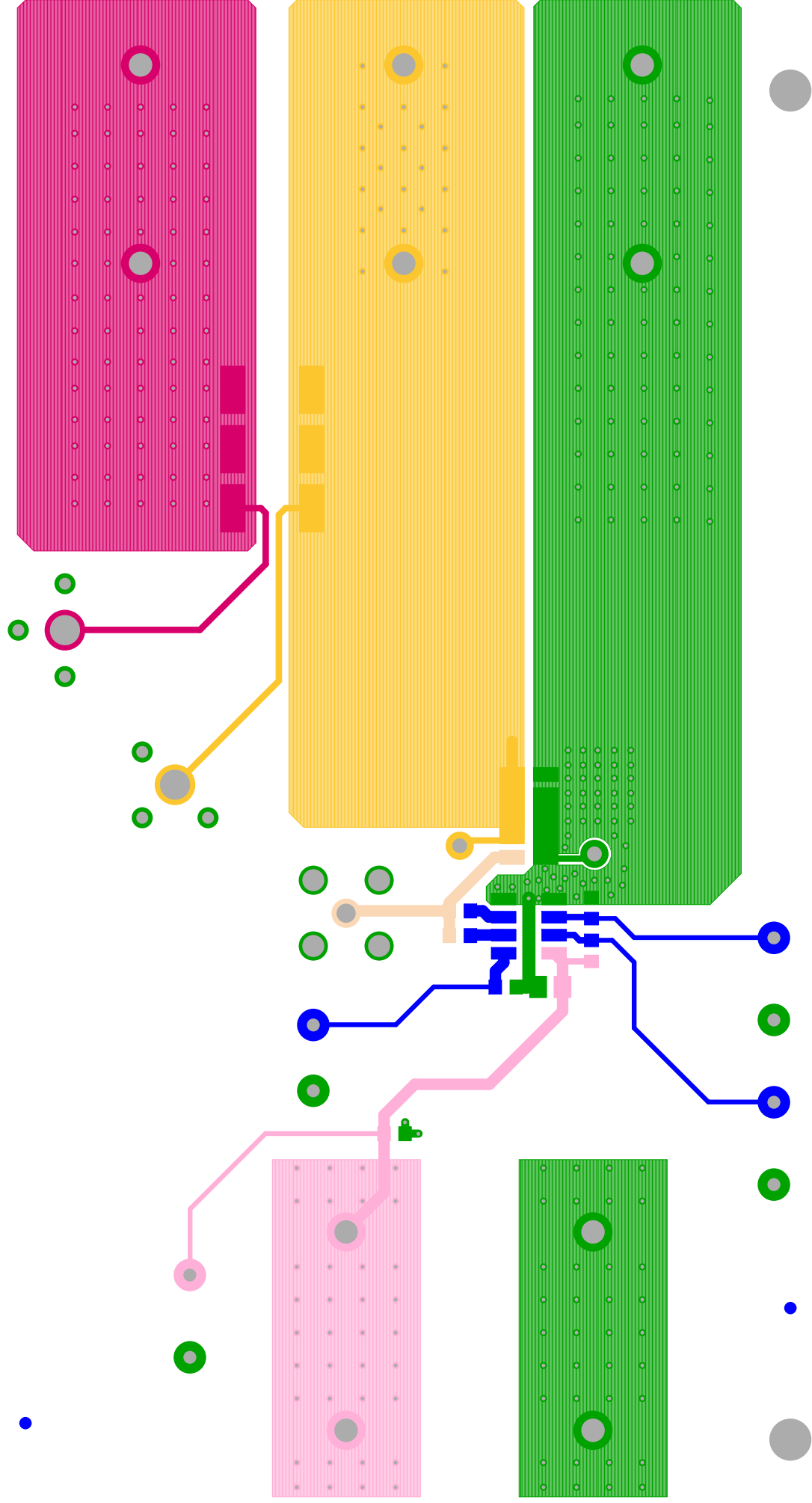


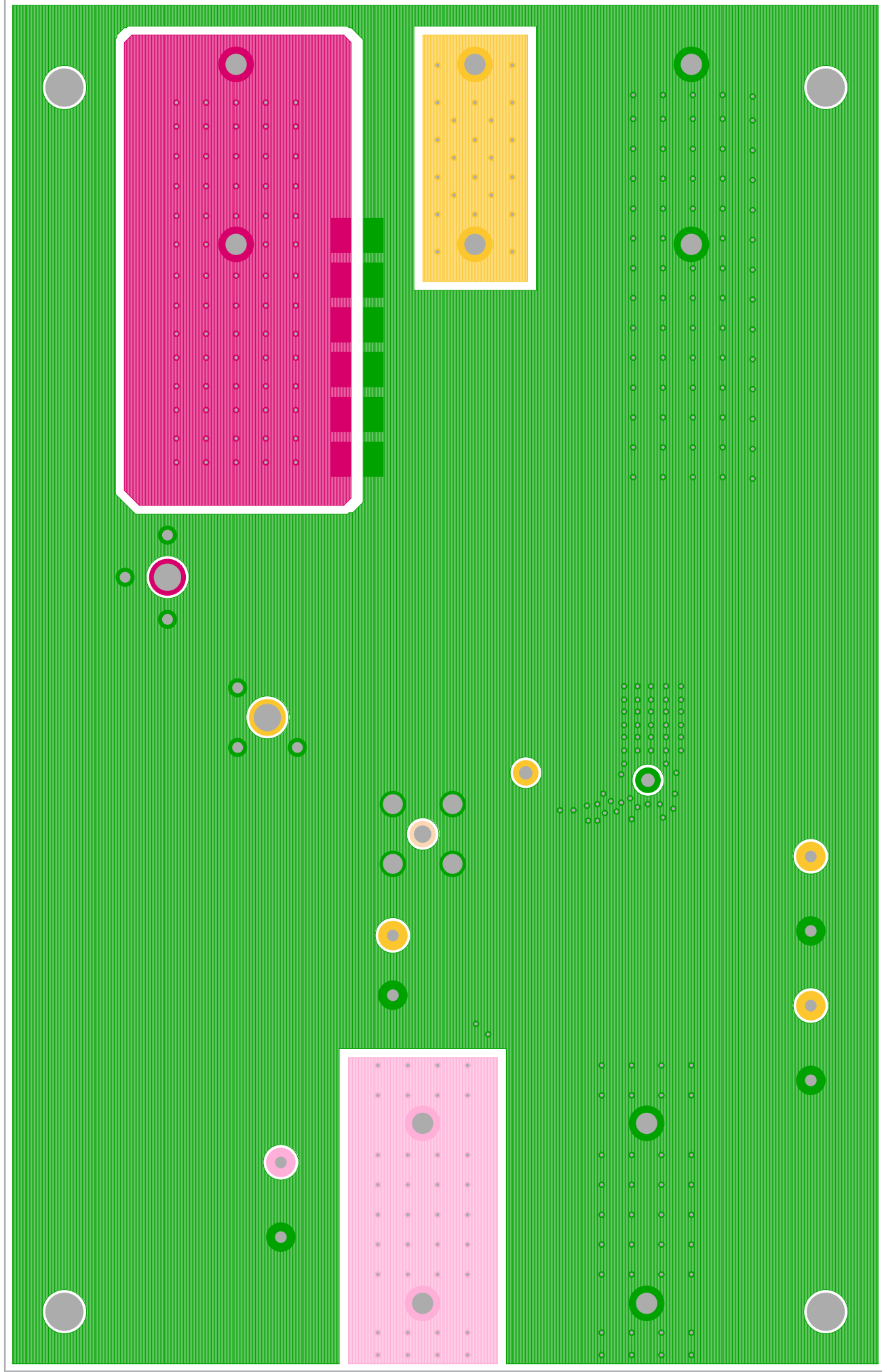
ISL70040SEH: Low Side GaN  
FET Driver  
ISL70023SEH: GaN FET



ISL70040SEHEV2Z REV.B

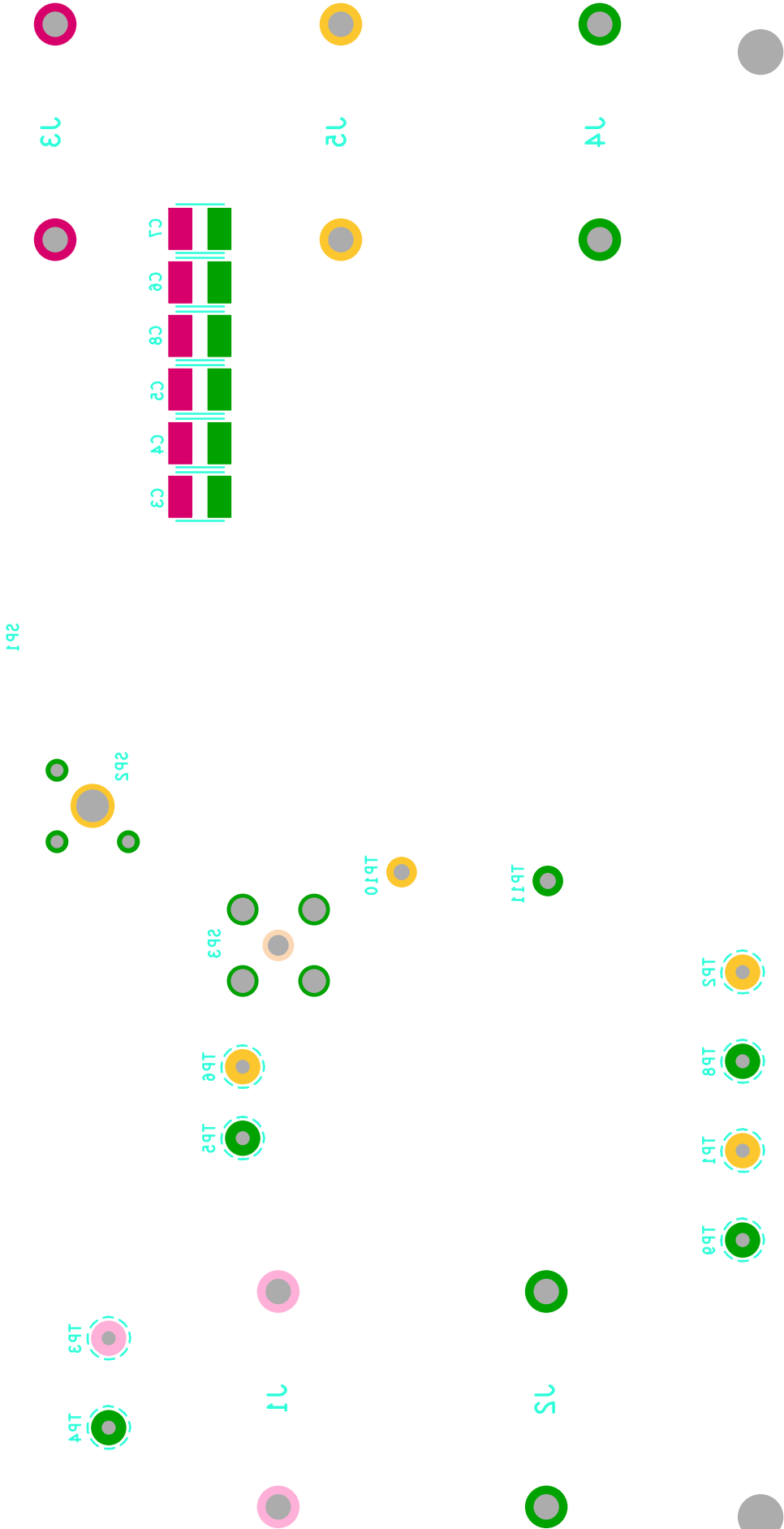
SILK SCREEN TOP  
INTERSIL CORPORATION  
08-04-2017







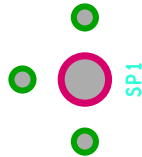
CALL 1-888-INTERSIL



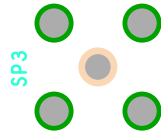
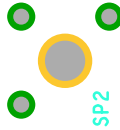
SILK SCREEN BOTTOM  
INTERSIL CORPORATION  
08-04-2017



CALL 1-888-INTERSIL



J3



J1



J5



J4



J2



08-04-5011

INTERIT CORPORATION

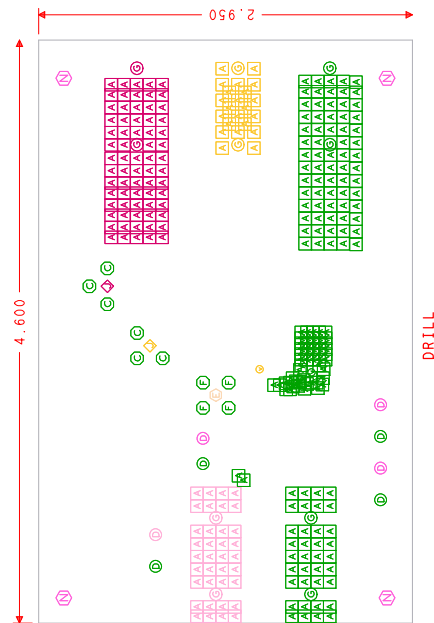
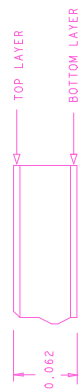
ASSEMBLY BOTTOM

	C3
	C4
	C5
	C8
	C6
	C7


DRILL CHART: TOP to BOTTOM				
ALL UNITS ARE IN MILS				
FIGURE	SIZE	TOLERANCE	PLATED	QTY
A	12.0	+2.0/-2.0	PLATED	287
C	37.0	+2.0/-0.0	PLATED	6
D	40.0	+2.0/-0.0	PLATED	8
E	46.0	+2.0/-2.0	PLATED	2
F	59.0	+3.0/-3.0	PLATED	1
G	67.0	+3.0/-3.0	PLATED	4
H	72.0	+3.0/-3.0	PLATED	10
I	93.0	+3.0/-3.0	PLATED	2
N	128.0	+3.0/-3.0	NON-PLATED	4

NOTES:

1. THIS BOARD IS RoHS COMPLIANT.
2. PRINTED WIRING BOARD DESIGN AND ACCEPTANCE CRITERIA SHALL BE IAW WITH THE REQUIREMENTS OF IPC-D-275 AND IPC-A-600.
3. MATERIAL: FR4 (RoHS COMPLIANT), 2 OZ COPPER.
4. APPLY SOLDER MASK, BOTH SIDES OVER BARE COPPER IAW IPC-SM-840. CLASS 2 (LPI) (RED MASK).
5. ALL PATTERNS ARE VIEWED FROM THE PRIMARY SIDE LOOKING THROUGH THE BOARD.
6. UNLESS OTHERWISE SPECIFIED ALL HOLE DIAMETERS ARE AFTER PLATING.
7. APPLY SILKSCREEN USING WHITE NON-CONDUCTIVE EPOXY BASED INK.
8. PWB MUST BE 100% ELECTRICALLY TESTED FOR SHORTS AND CONTINUITY. USE NETLIST PROVIDED ISL70040SEHV2ZB\_IPC356.IPC IAW IPC-D-356.
9. MARK DATE CODE AND MANUFACTURES IDENTIFICATION ON SOLDER SIDE PER IPC-6011 AND IPC-6012.
10. TOLERANCE ON ALL DRILL HOLES SHALL BE IAW IPC-D-2221 & 2222 UNLESS OTHERWISE SPECIFIED.
11. VIA20C11P VIAS ARE TO BE NON-CONDUCTIVE EPOXY FILLED AND CAPPED.



Drawn By: <b>Tim Klemann</b>	Date Drawn: <b>08/04/2017</b>	Engineer: <b>Kiran Bernard</b>
Released By:	Date Released:	ISL70040SEH EVALUATION BOARD LAYOUT
Updated By:	Date Updated:	
MESH#		REV <b>B</b>
HOUR ID ISL70040SEHV2Z		SHEET <b>1 of 1</b>
FILENAME: ~/ISL70040SEH/ISL70040SEHV2ZB		



A Kereass Company