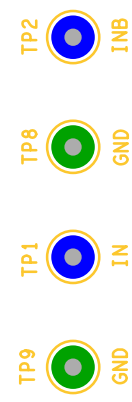
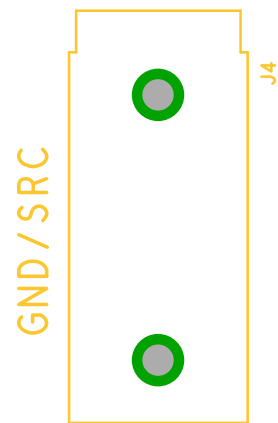
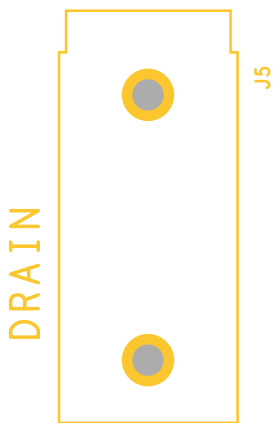
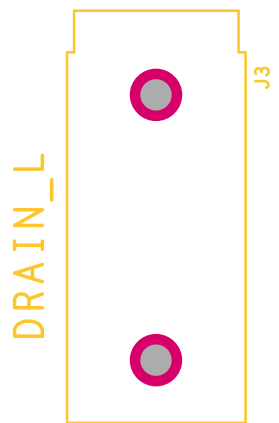
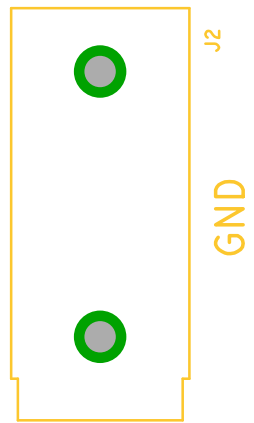
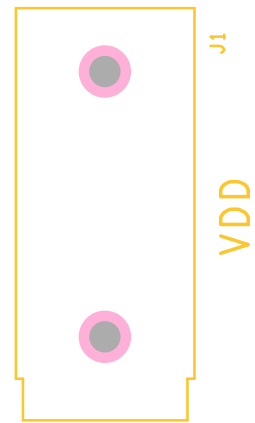
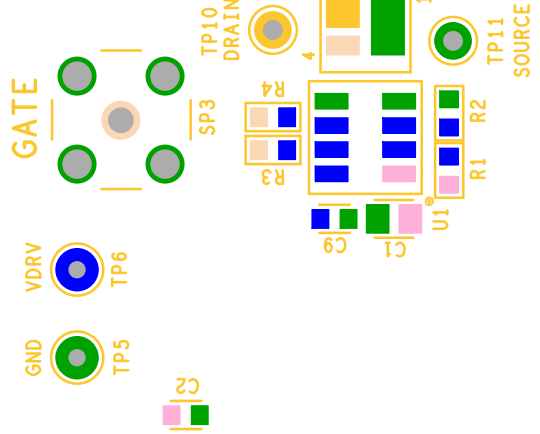
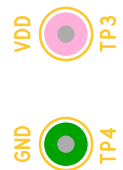
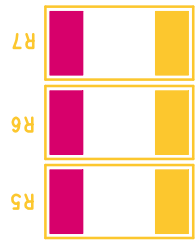
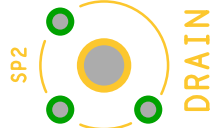
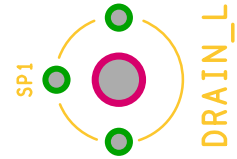


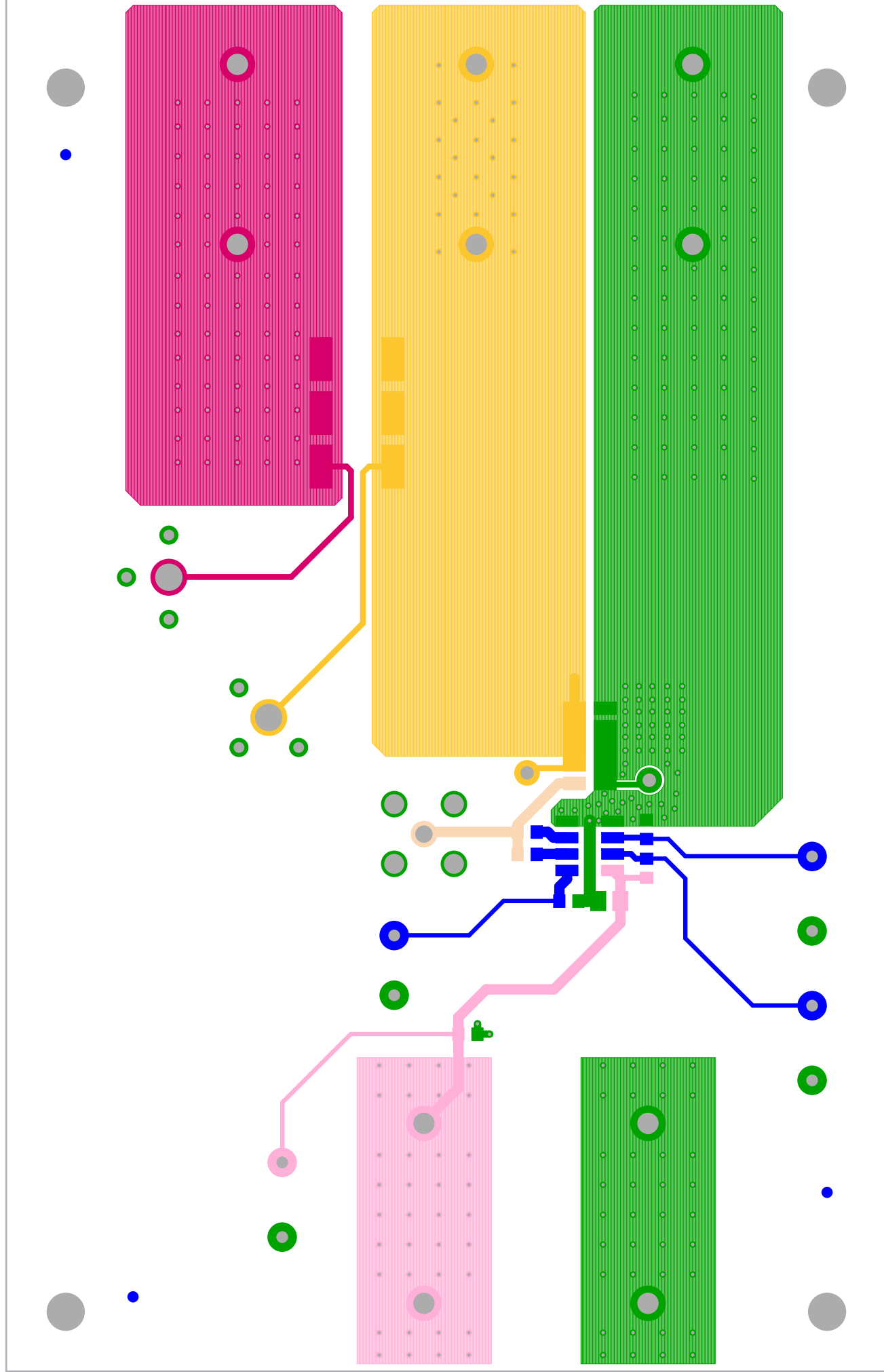


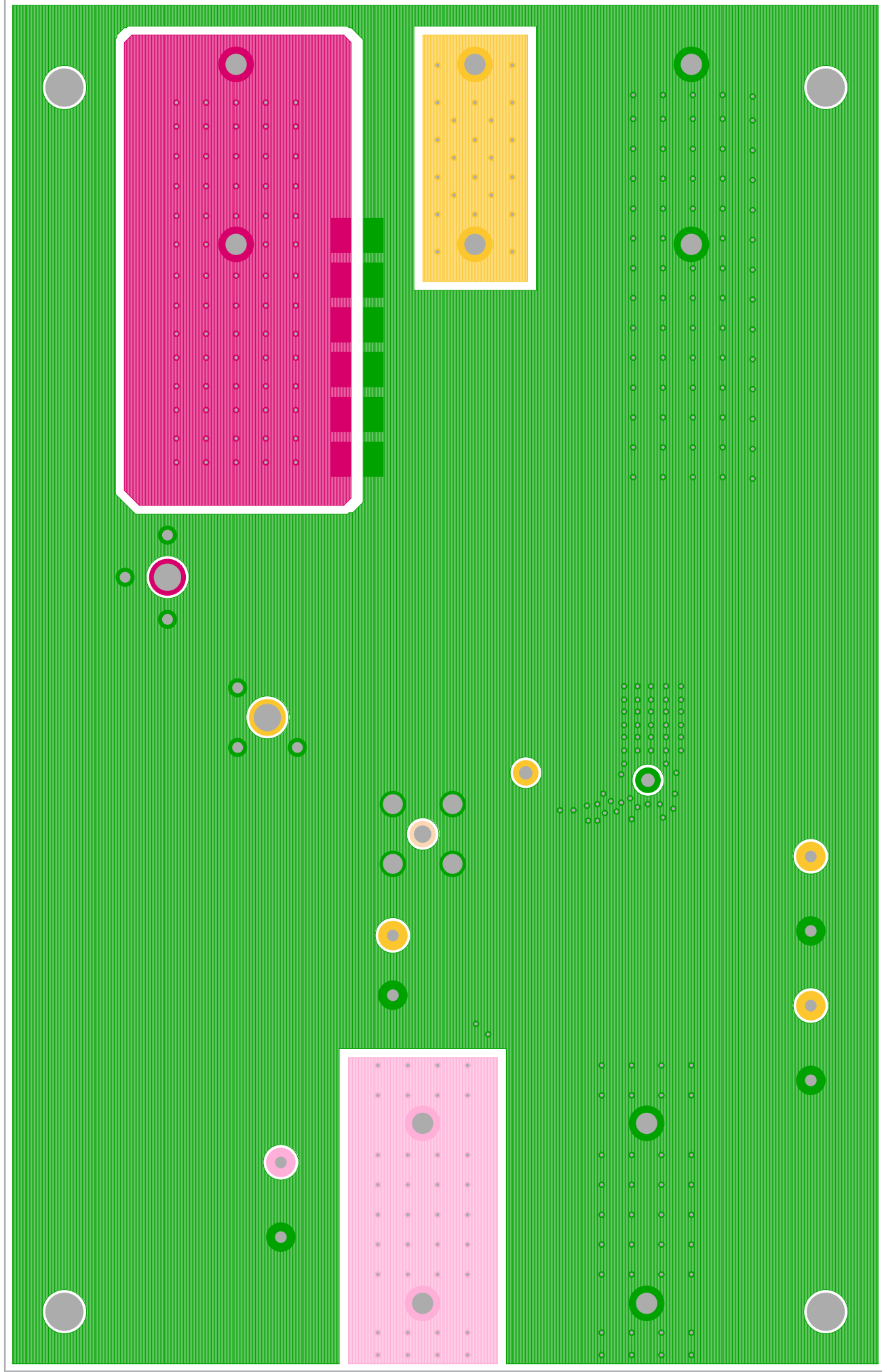
ISL70040SEH: Low Side GaN
FET Driver
ISL70024SEH: GaN FET



ISL70040SEHEV3Z REV.A

SILK SCREEN TOP
INTERSIL CORPORATION
08-07-2017

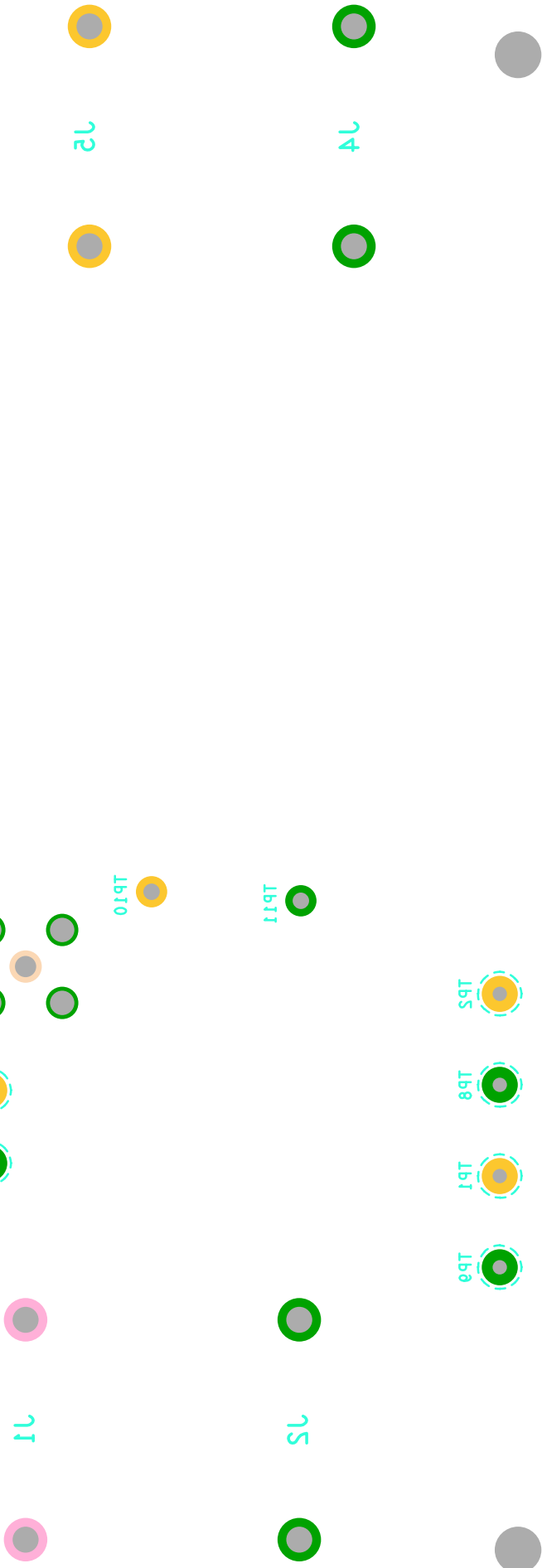
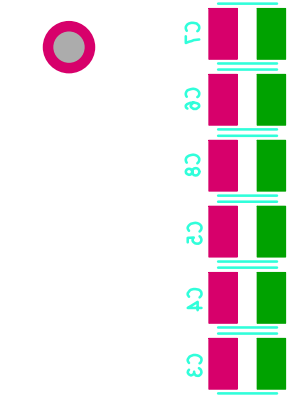




BOTTOM LAYER SOLDER SIDE
INTERSIL CORPORATION
08-07-2017



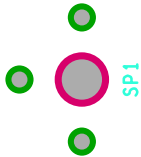
CALL 1-888-INTERSIL



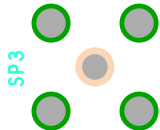
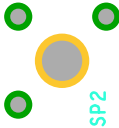
SILK SCREEN BOTTOM
INTERSIL CORPORATION
08-07-2017



CALL 1-888-INTERSIL



J3



J1



J5



J4



J2



08-03-2013
INTERSil CORPORATION
SILK SCREEN BOTTOM

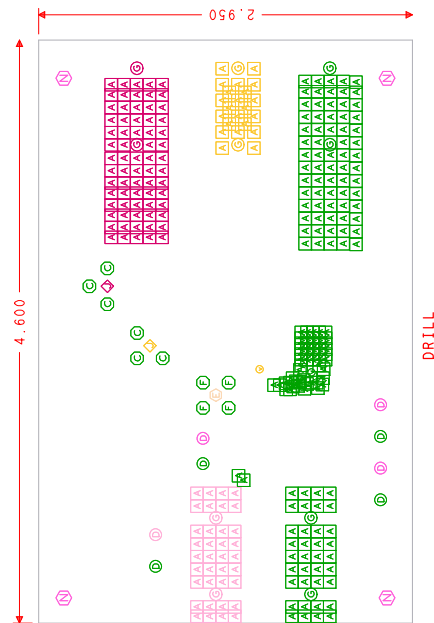
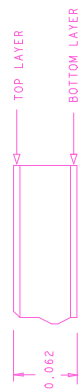
08-01-5011
INTERIT CORPORATION
ASSEMBLY BOTTOM

	C3
	C4
	C5
	C8
	C6
	C7

DRILL CHART: TOP to BOTTOM				
ALL UNITS ARE IN MILS				
FIGURE	SIZE	TOLERANCE	PLATED	QTY
A	12.0	+2.0/-2.0	PLATED	287
C	37.0	+2.0/-0.0	PLATED	6
D	40.0	+2.0/-0.0	PLATED	8
E	46.0	+2.0/-2.0	PLATED	2
F	59.0	+3.0/-3.0	PLATED	1
G	67.0	+3.0/-3.0	PLATED	4
H	72.0	+3.0/-3.0	PLATED	10
I	93.0	+3.0/-3.0	PLATED	2
N	128.0	+3.0/-3.0	NON-PLATED	4

NOTES:

- 1. THIS BOARD IS RoHS COMPLIANT.
- 2. PRINTED WIRING BOARD DESIGN AND ACCEPTANCE CRITERIA SHALL BE IAW WITH THE REQUIREMENTS OF IPC-D-275 AND IPC-A-600.
- 3. MATERIAL: FR4 (RoHS COMPLIANT), 2 OZ COPPER.
- 4. APPLY SOLDER MASK, BOTH SIDES OVER BARE COPPER IAW IPC-SM-840. CLASS 2 (LPI) (RED MASK).
- 5. ALL PATTERNS ARE VIEWED FROM THE PRIMARY SIDE LOOKING THROUGH THE BOARD.
- 6. UNLESS OTHERWISE SPECIFIED ALL HOLE DIAMETERS ARE AFTER PLATING.
- 7. APPLY SILKSCREEN USING WHITE NON-CONDUCTIVE EPOXY BASED INK.
- 8. PWB MUST BE 100% ELECTRICALLY TESTED FOR SHORTS AND CONTINUITY. USE NETLIST PROVIDED ISL70040SEHV3ZA_IPC356.IPC IAW IPC-D-356.
- 9. MARK DATE CODE AND MANUFACTURES IDENTIFICATION ON SOLDER SIDE PER IPC-6011 AND IPC-6012.
- 10. TOLERANCE ON ALL DRILL HOLES SHALL BE IAW IPC-D-2221 & 2222 UNLESS OTHERWISE SPECIFIED.



Drawn By: Tim Klemann	Date Drawn: 08/07/2017	Engineer: Kiran Bernard
Released By:	Date Released:	ISL70040SEH EVALUATION BOARD LAYOUT
Updated By:	Date Updated:	
MESH#		HWIR ID ISL70040SEHV3Z
REV A		FILENAME: ~/ISL70040SEH/ISL70040SEHV3ZA
SHEET 1 of 1		

