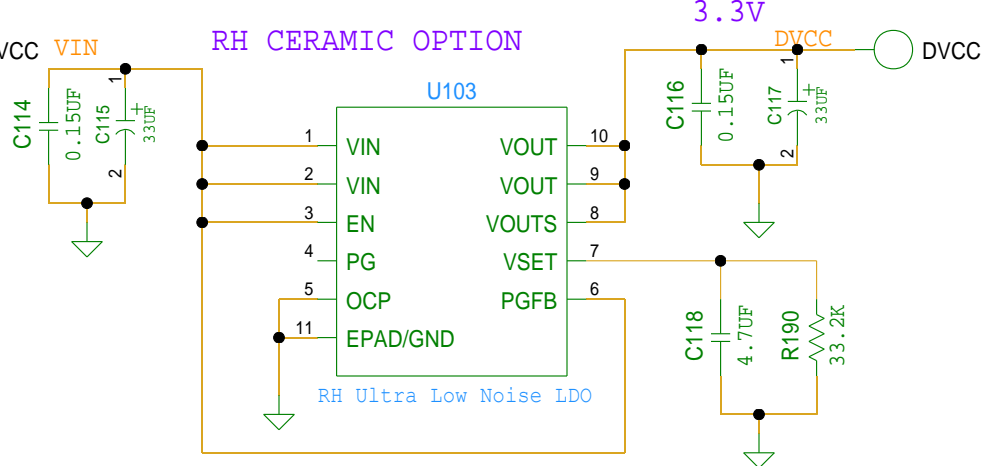
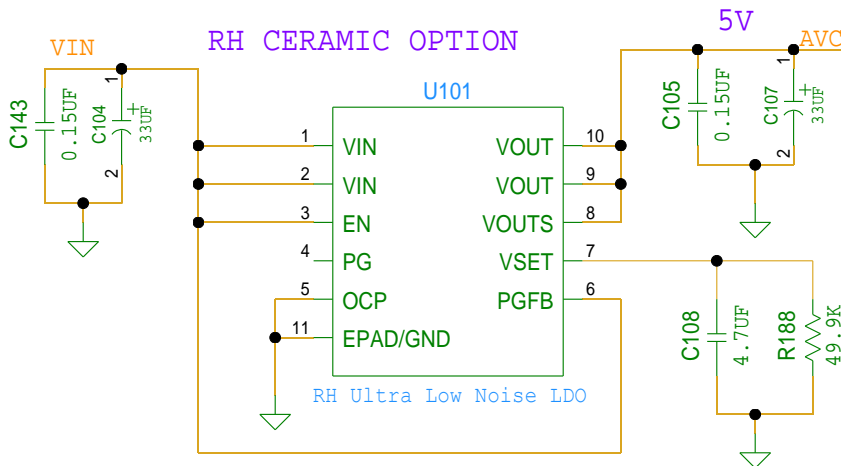
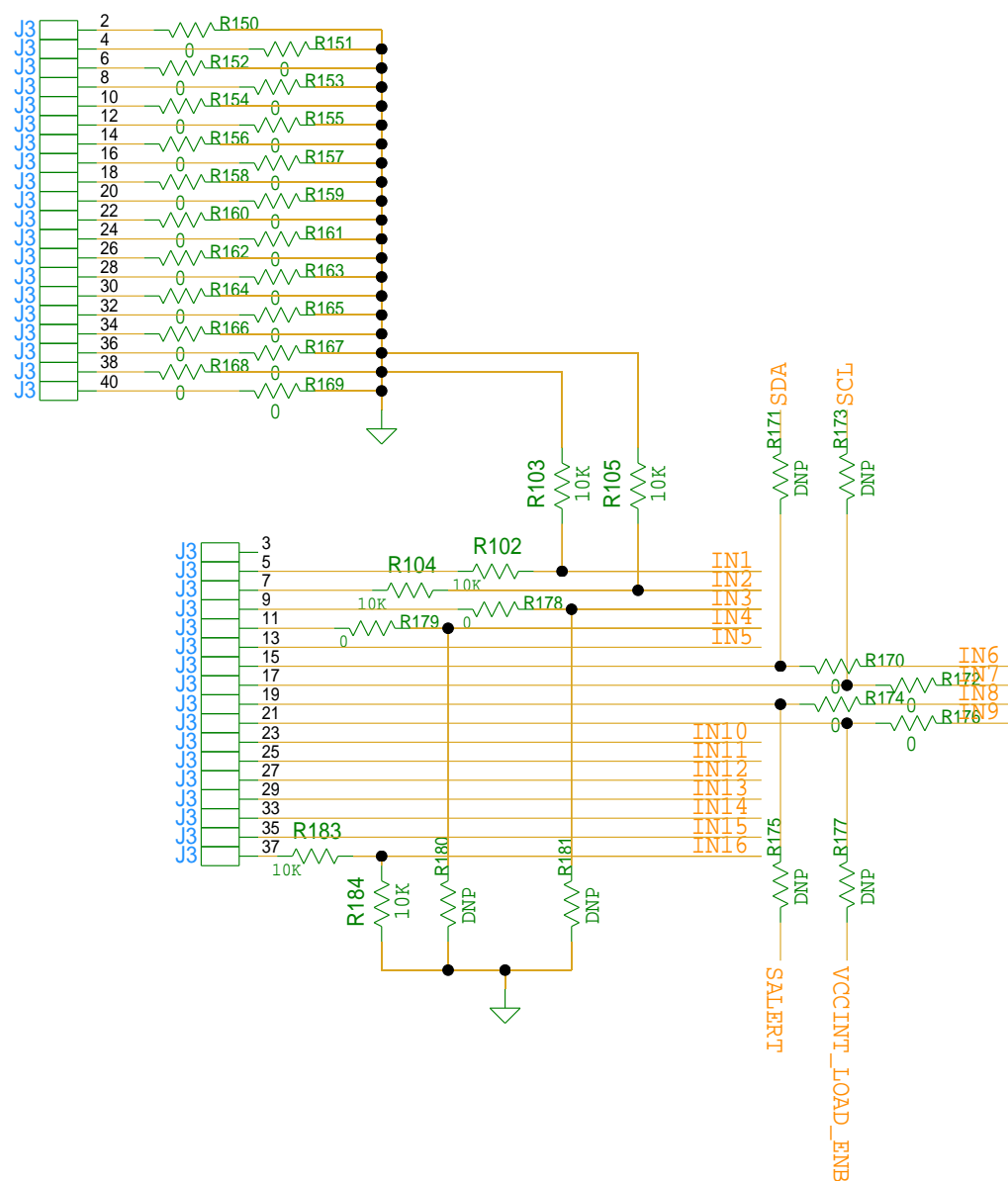
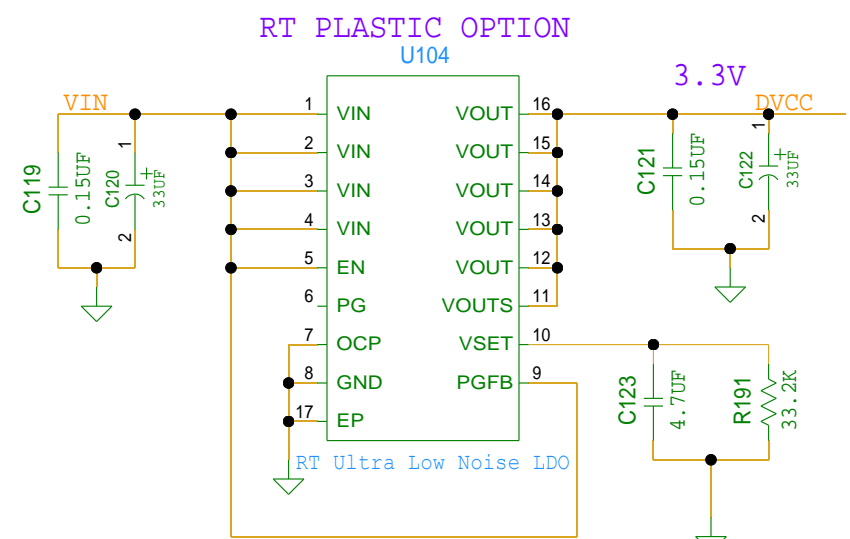
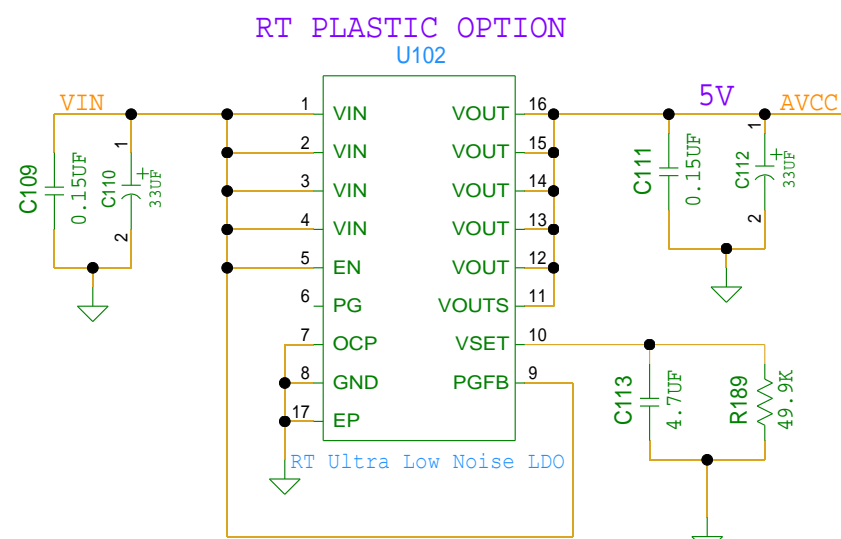


ADC, VREF, AND LDOS



U101/U102 DUAL FOOTPRINT

U101/U102 DUAL FOOTPRINT

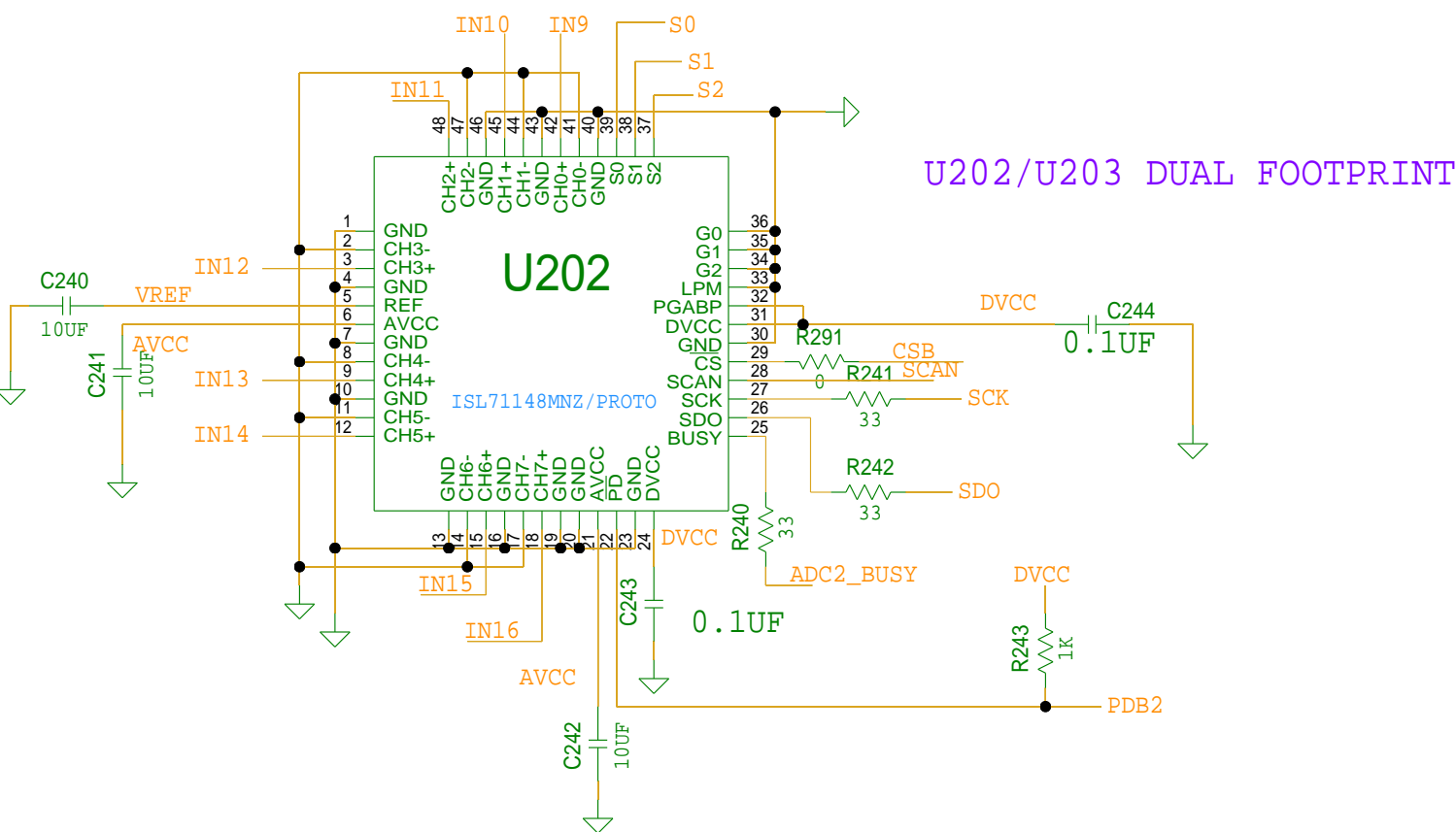
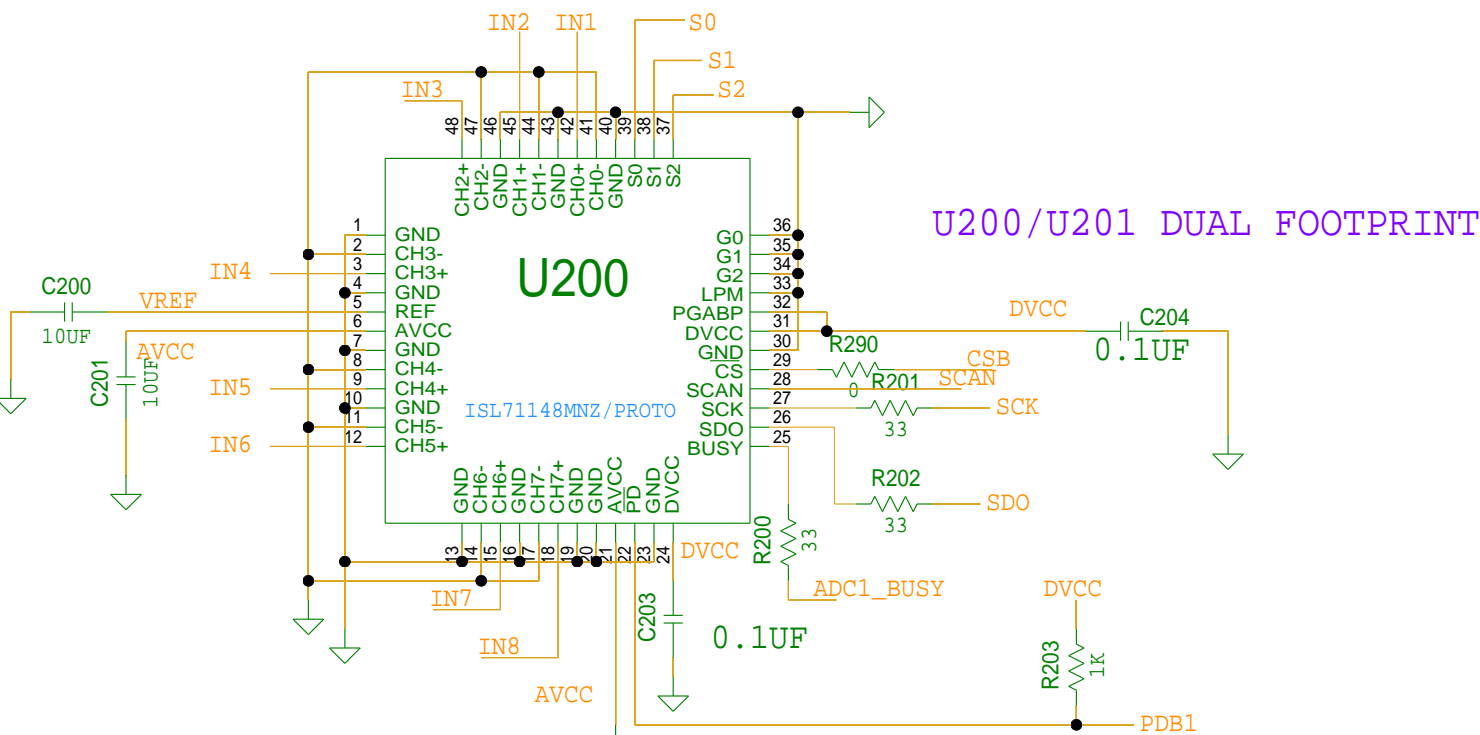


6V TO 12V TYP 10V

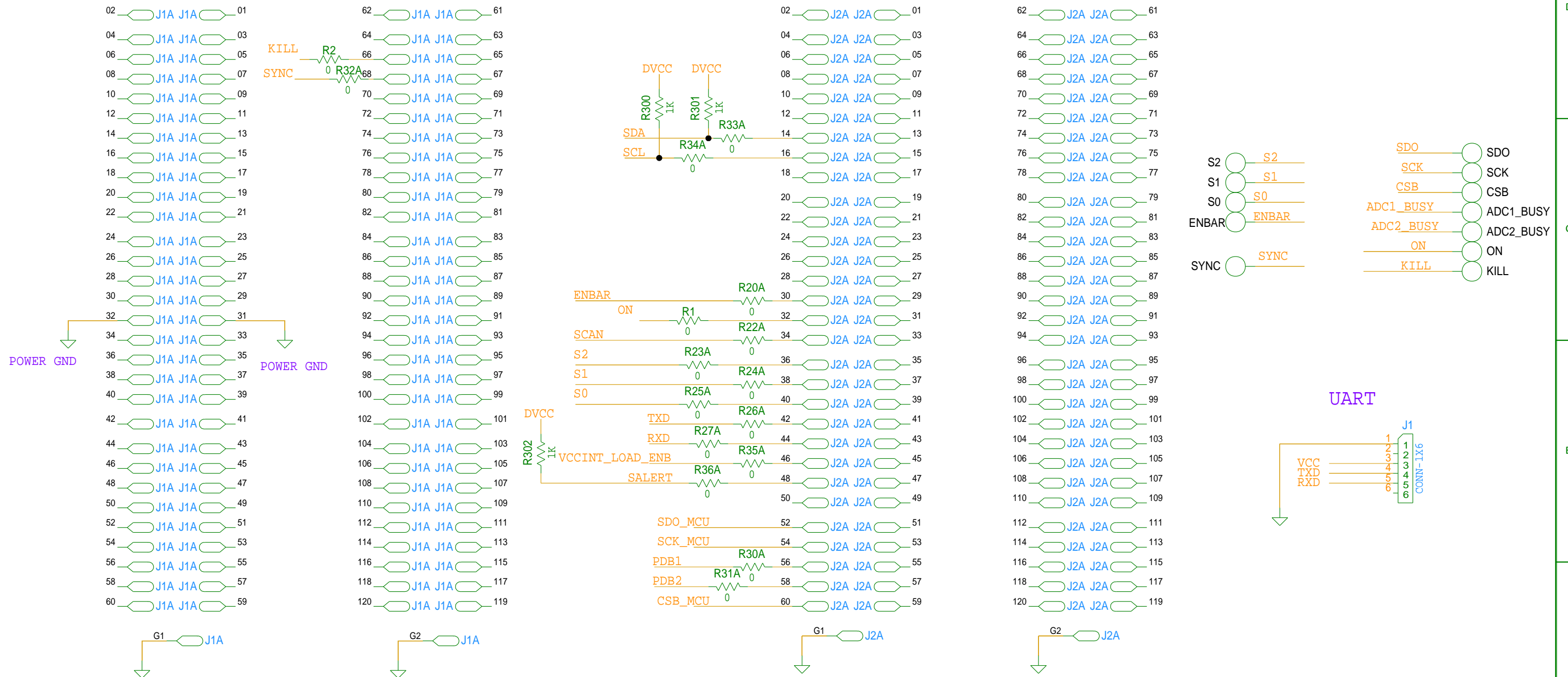
U100/U105 DUAL FOOTPRINT

DRAWN BY: JONATHAN HARRIS	DATE: 12/20/2023	ENGINEER: JONATHAN HARRIS	DATE:
RELEASED BY:	DATE:	TITLE: FPGA POWER BOARD DEMO	
UPDATED BY: JONATHAN HARRIS	DATE: 03/14/2024	TESTER	
FILENAME: ISL7X148VMREFEV1Z		MASK#	HRDWR ID
		REV. A	
SHEET 1 OF 3			

DUAL FOOTPRINT ISL71148/ISL73148 ADCS



BOARD CONNECTORS



ADC SPI JUMPER SELECTIONS

