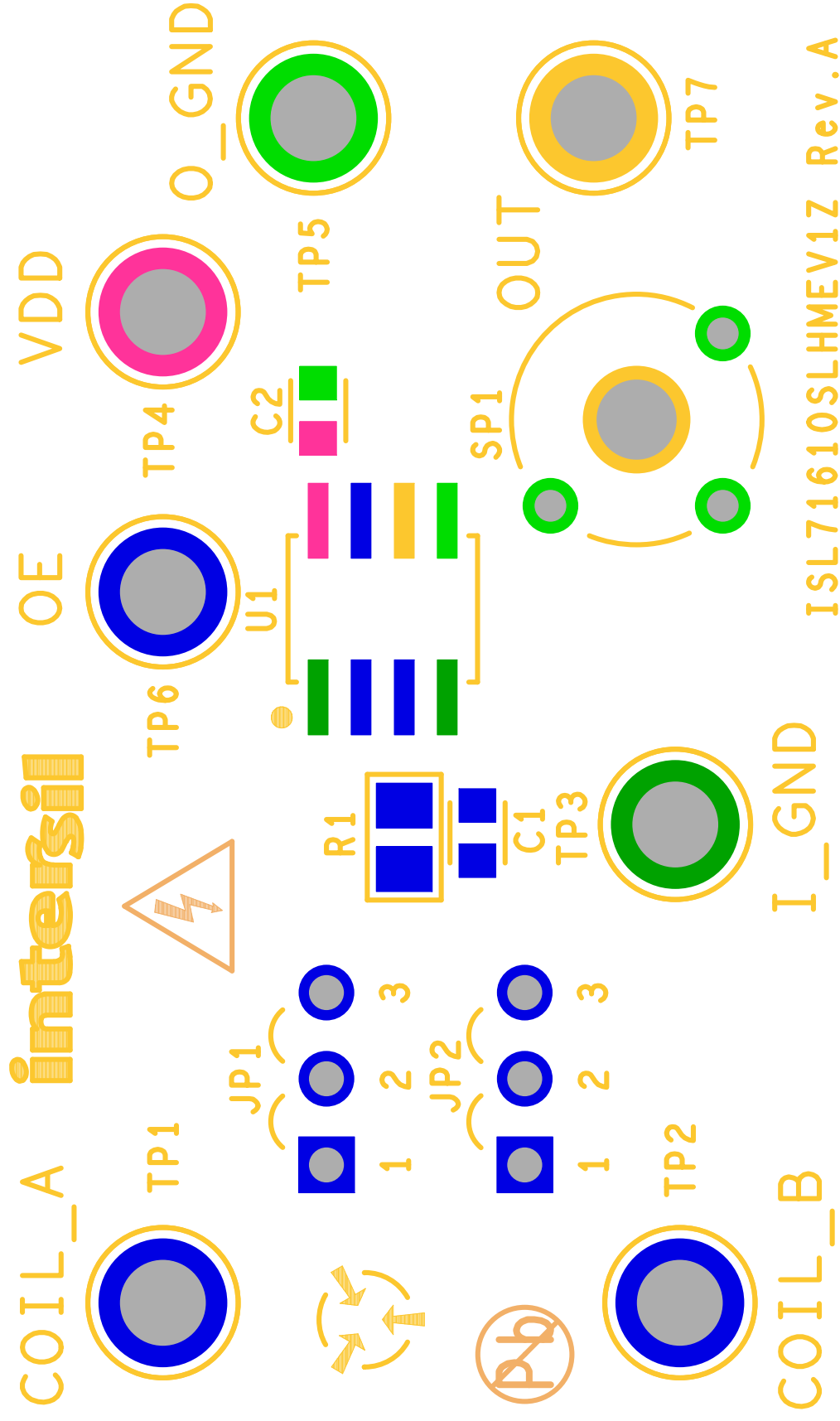


ASSEMBLY TOP

INTERSIL
04-10-2020

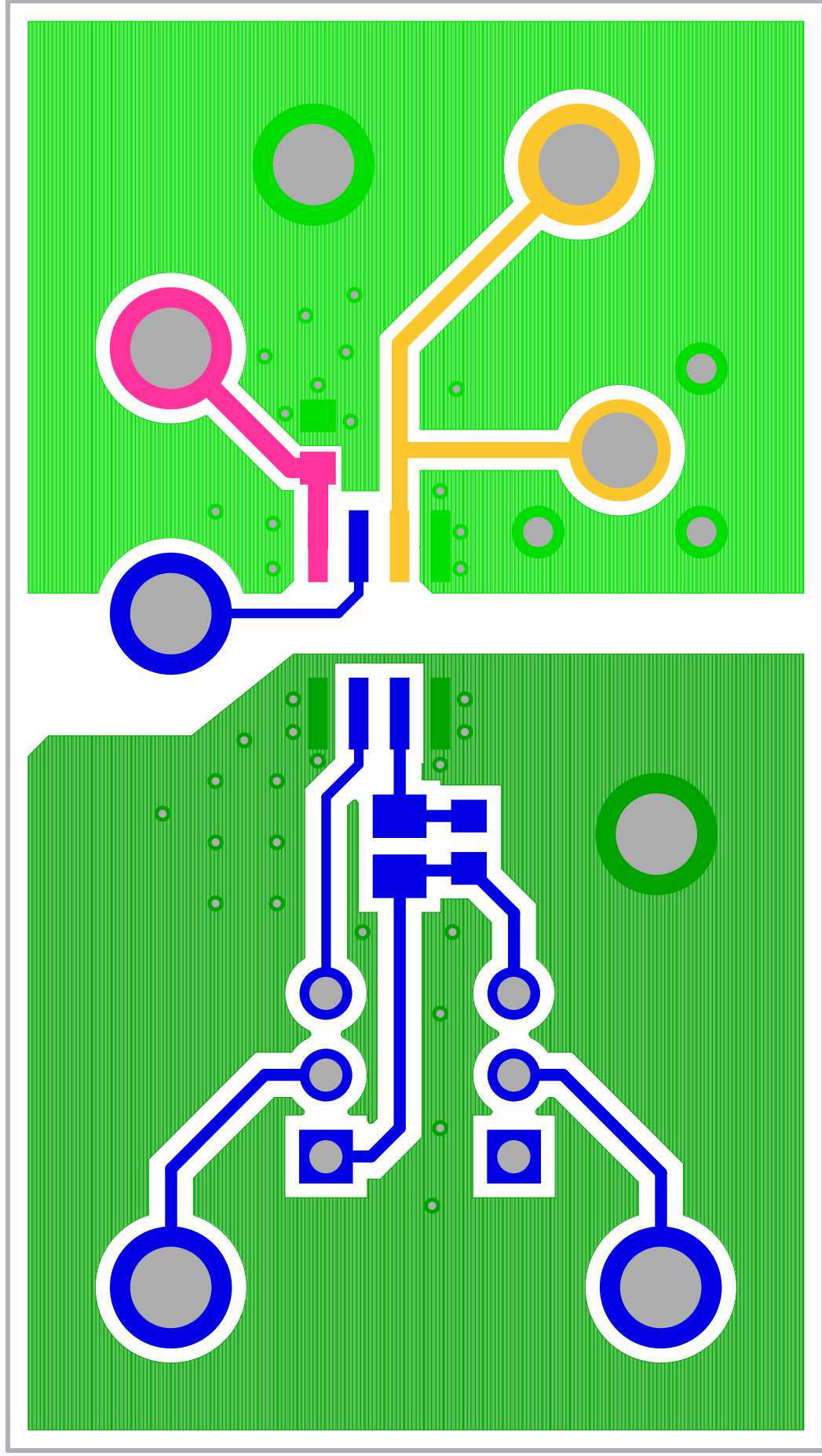
ISL71610SLHMEV1Z Rev.A



SILK SCREEN TOP

INTERSIL
04-10-2020

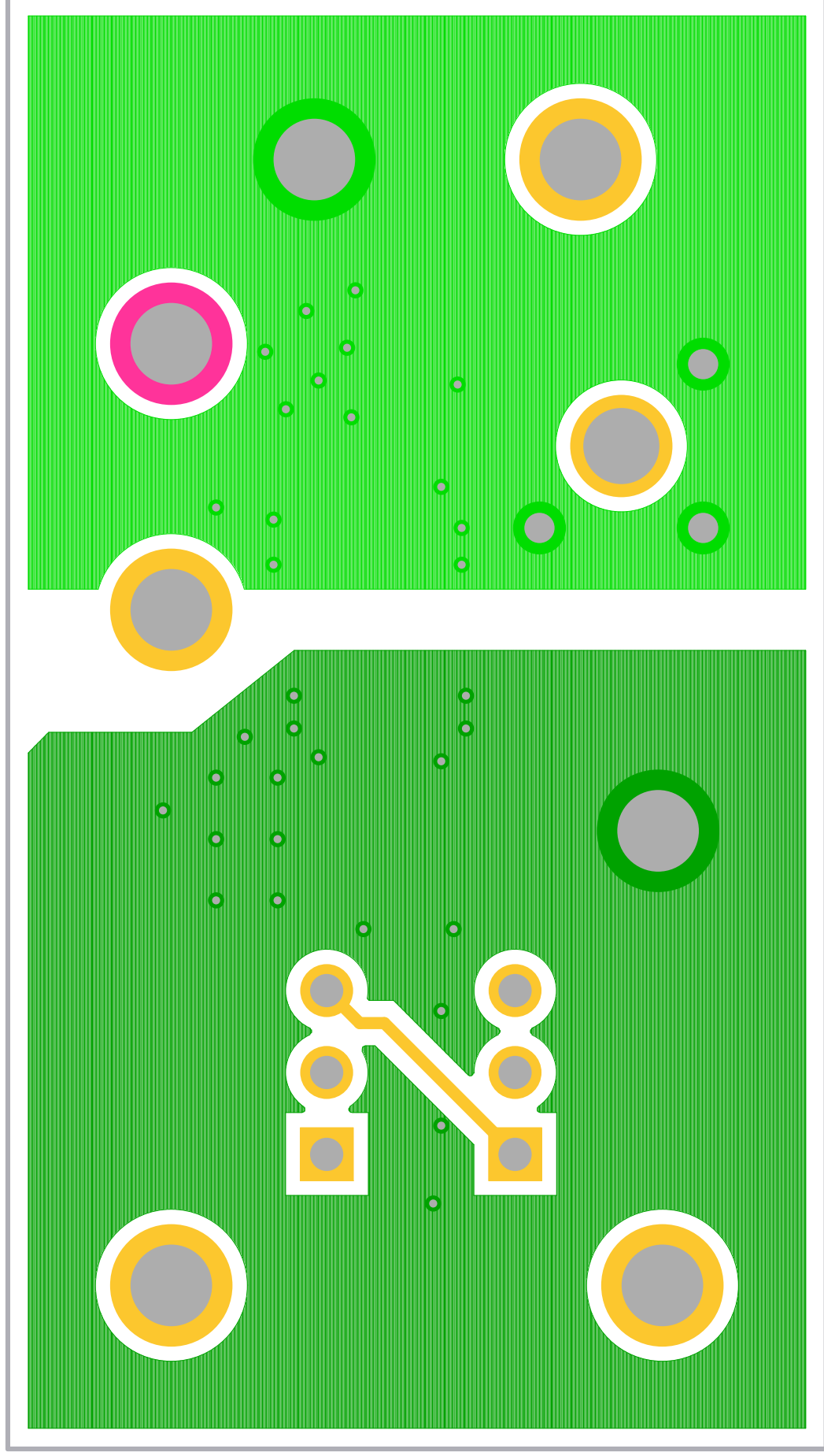
ISL71610SLHMEV1Z Rev. A



TOP LAYER COMPONENT SIDE

INTERSIL
04-10-2020

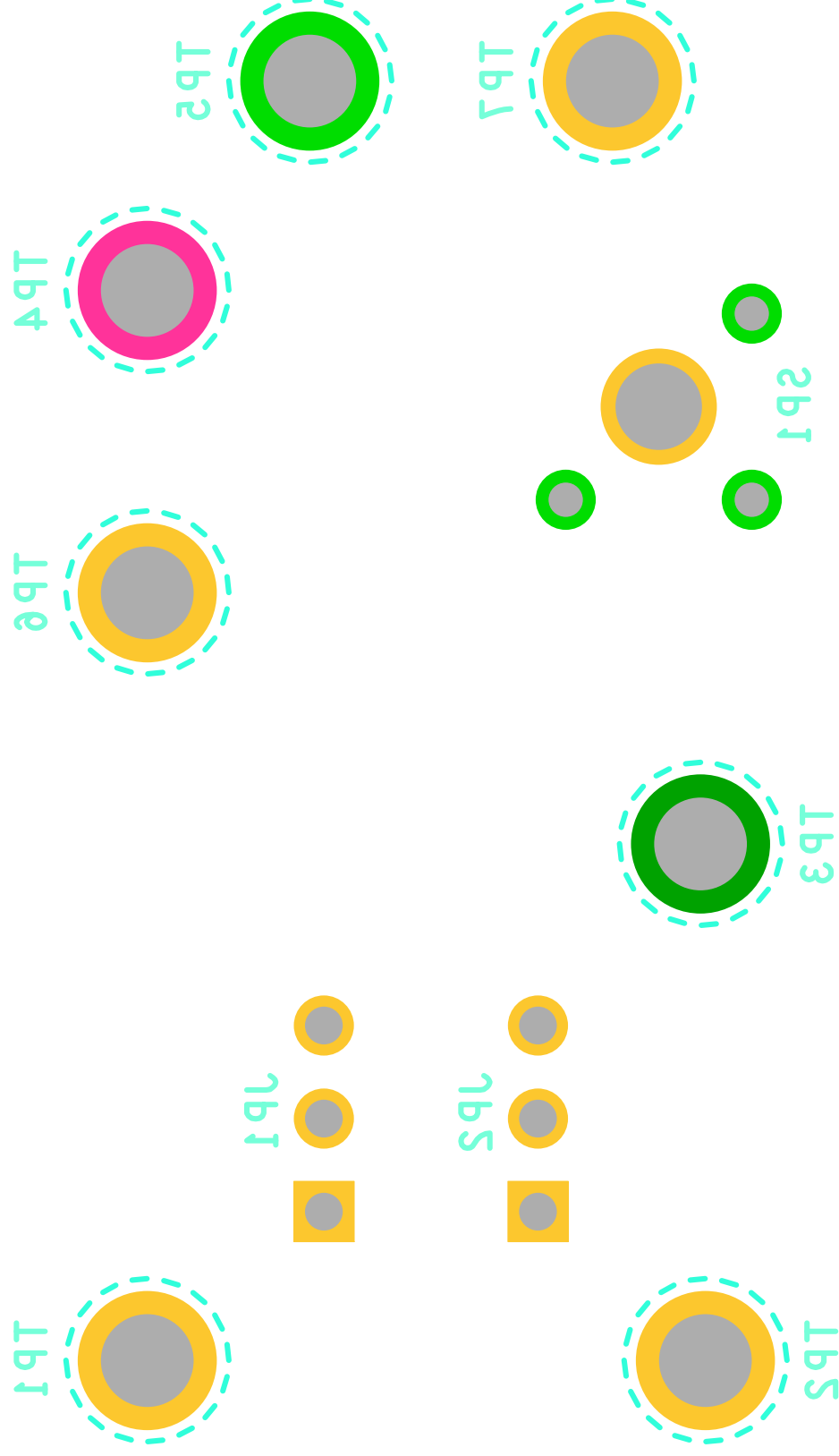
ISL71610SLHMEV1Z Rev. A



BOTTOM LAYER SOLDER SIDE

INTERSIL
04-10-2020

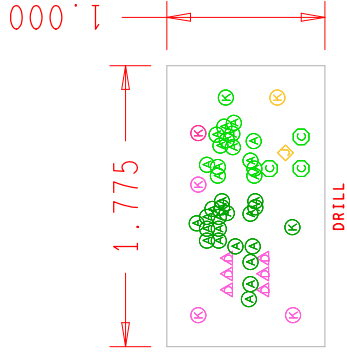
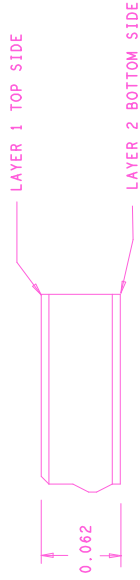
ISL71610SLHMEV1Z Rev.A



SILK SCREEN BOTTOM

INTERSIL

04-10-2020



DRILL CHART: TOP to BOTTOM			
ALL UNITS ARE IN MILS			
FIGURE	SIZE	PLATED	QTY
Ⓐ	10.0	PLATED	33
Ⓑ	37.0	PLATED	3
Ⓐ	41.0	PLATED	6
Ⓐ	93.0	PLATED	1
Ⓚ	100.0	PLATED	7

NOTES:

- THIS BOARD IS RoHS COMPLIANT.
- PRINTED WIRING BOARD DESIGN AND ACCEPTANCE CRITERIA SHALL BE IAW WITH THE REQUIREMENTS OF IPC-D-275 AND IPC-A-600.
- MATERIAL: FR4 (RoHS COMPLIANT), 1 OZ COPPER.
- APPLY SOLDER MASK, BOTH SIDES OVER BARE COPPER IAW IPC-SM-840. CLASS 2 (LPI) (BLUE MASK).
- ALL PATTERNS ARE VIEWED FROM THE PRIMARY SIDE LOOKING THROUGH THE BOARD.
- UNLESS OTHERWISE SPECIFIED ALL HOLE DIAMETERS ARE AFTER PLATING.
- APPLY SILKSCREEN USING WHITE NON-CONDUCTIVE EPOXY BASED INK.
- PWB MUST BE 100% ELECTRICALLY TESTED FOR SHORTS AND CONTINUITY.
- USE NETLIST PROVIDED ISL71610SLHMEV1ZA.IPC IAW IPC-D-356.
- MARK DATE CODE AND MANUFACTURES IDENTIFICATION ON SOLDER SIDE PER IPC-6011 AND IPC-6012.
- TOLERANCE ON ALL DRILL HOLES SHALL BE IAW IPC-D-2221 & 2222 UNLESS OTHERWISE SPECIFIED.

Drawn By: Tim Klemann	Date Drawn: 04/10/2020	Engineer: Larry Gough
Released By:	Date Released:	ISL71610SLHM EVALUATION BOARD LAYOUT
Updated By:	Date Updated:	
		MASK# HDWR ID REV. A
FILENAME: ~/ISL71610SLHM/ISL71610SLHMEV1ZA		SHEET 1 OF 1