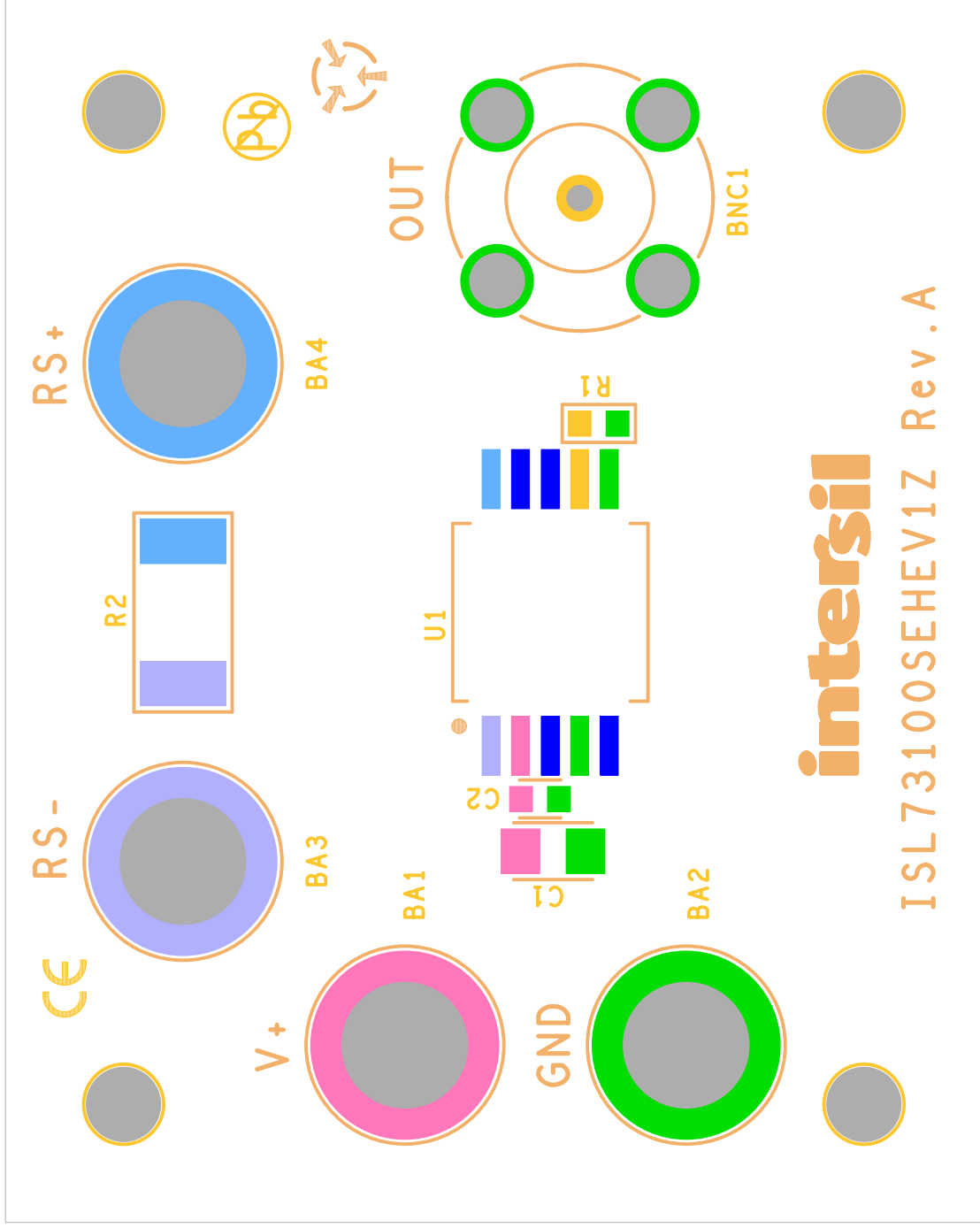


ASSEMBLY TOP

INTERSIL

03-03-2020

ISL73100SEHEV1Z Rev.A



intersil

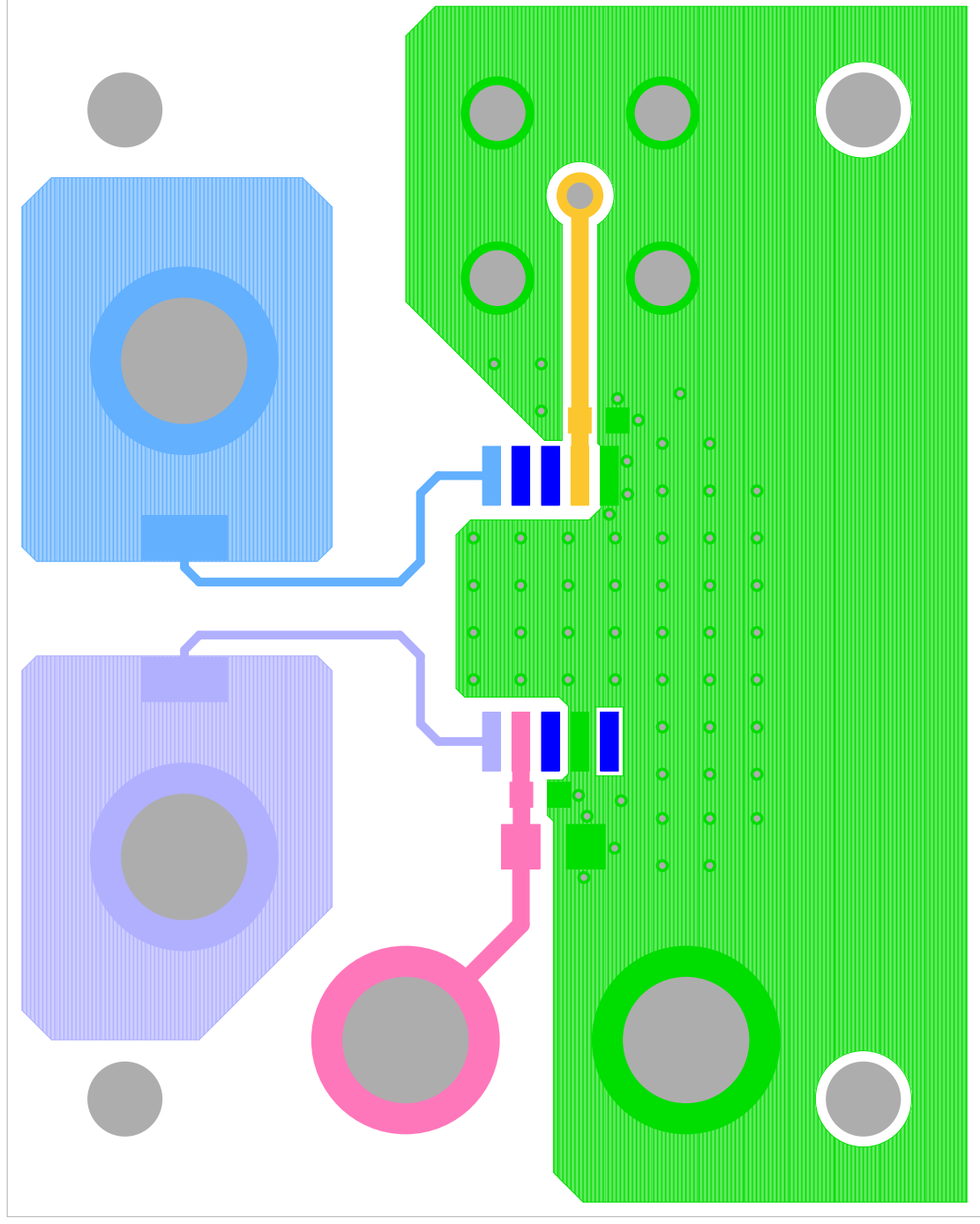
ISL73100SEHEV1Z Rev.A

SILK SCREEN TOP

INTERSIL

03-03-2020

ISL73100SEHEV1Z Rev.A

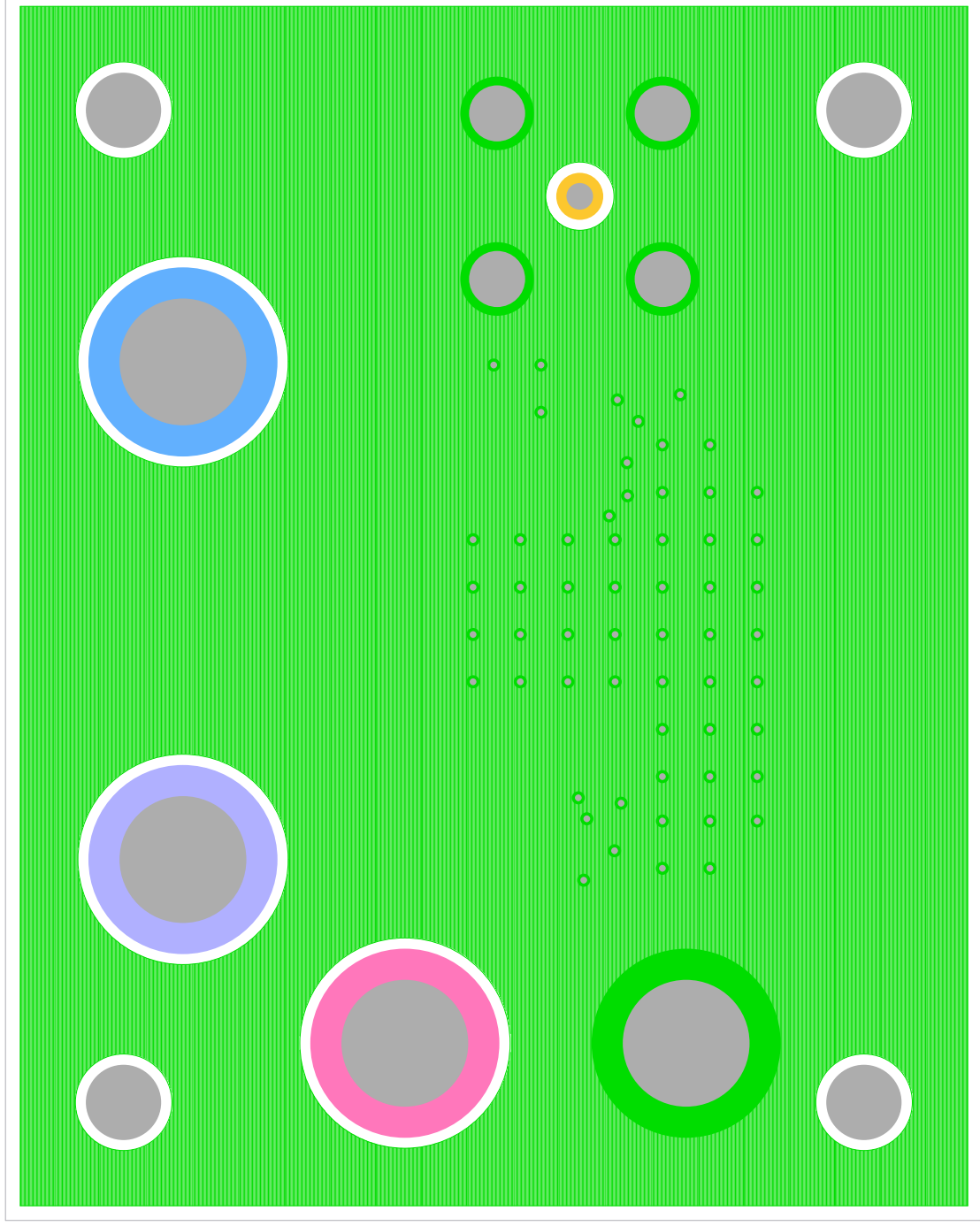


TOP LAYER COMPONENT SIDE

INTERSIL

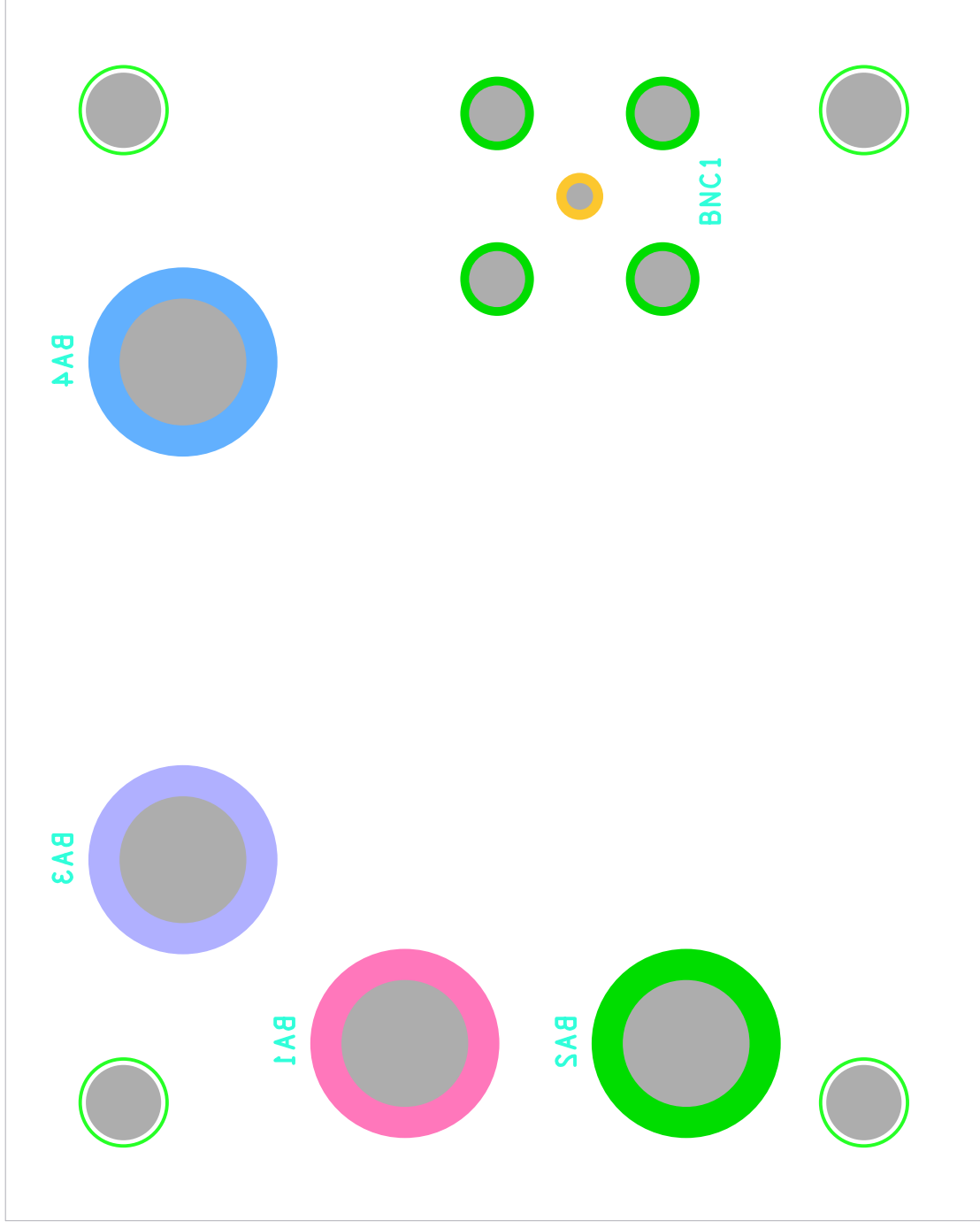
03-03-2020

ISL73100SEHEV1Z Rev.A



BOTTOM LAYER SOLDER SIDE

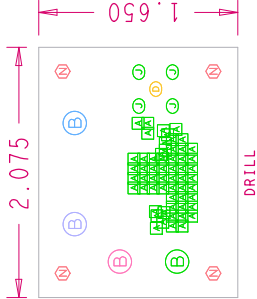
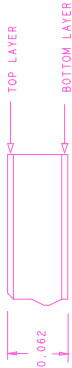
INTERSIL
03-03-2020



SILK SCREEN BOTTOM

INTERSIL

03-03-2020



DRILL CHART: TOP to BOTTOM			
ALL UNITS ARE IN MILS			
FIGURE	SIZE	PLATED	QTY
A	12.0	PLATED	58
B	45.0	PLATED	1
C	95.0	PLATED	4
D	215.0	PLATED	4
E	128.0	NON-PLATED	4

NOTES:

1. THIS BOARD IS RoHS COMPLIANT .
2. PRINTED WIRING BOARD DESIGN AND ACCEPTANCE CRITERIA SHALL BE IAW WITH THE REQUIREMENTS OF IPC-D-275 AND IPC-A-600 .
3. MATERIAL : FR4 (RoHS COMPLIANT), 1 OZ COPPER .
4. APPLY SOLDER MASK, BOTH SIDES OVER BARE COPPER IAW IPC-SM-840 .
CLASS 2 (LPI) (BLUE MASK) .
5. ALL PATTERNS ARE VIEWED FROM THE PRIMARY SIDE LOOKING THROUGH THE BOARD .
6. UNLESS OTHERWISE SPECIFIED ALL HOLE DIAMETERS ARE AFTER PLATING .
7. APPLY SILKSCREEN USING WHITE NON-CONDUCTIVE EPOXY BASED INK .
8. PWB MUST BE 100% ELECTRICALLY TESTED FOR SHORTS AND CONTINUITY .
USE NETLIST PROVIDED ISL73100SEHEV1ZA_IPC356 .IPC IAW IPC-D-356 .
9. MARK DATE CODE AND MANUFACTURES IDENTIFICATION ON SOLDER SIDE
PER IPC-6011 AND IPC-6012 .
10. TOLERANCE ON ALL DRILL HOLES SHALL BE IAW IPC-D-2221 & 2222 UNLESS OTHERWISE SPECIFIED .

Drawn By: Tim Klemann	Date Drawn: 03/03/2020	Engineer: Kiran Bernard
Released By:	Date Released:	ISL73100SEH EVALUATION BOARD LAYOUT
Updated By:	Date Updated:	
INTERFIL		MASK# HOUR ID REV A
FILENAME: \\ISL73100SEH\ISL73100SEHEV1ZA		SHEET 1 of 1