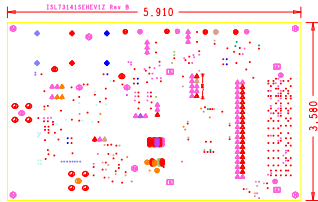


NOTES:

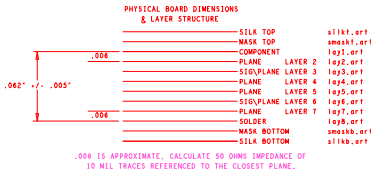
1. THIS BOARD IS RoHS COMPLIANT.
2. PRINTED WIRING BOARD DESIGN AND ACCEPTANCE CRITERIA SHALL BE IAW WITH THE REQUIREMENTS OF IPC-D-275 AND IPC-A-600.
3. MATERIAL: FR4 (RoHS COMPLIANT), 1 OZ. COPPER.
4. APPLY SOLDER MASK, BOTH SIDES OVER BARE COPPER IAW IPC-SM-840, CLASS 2 (LPI) (BLUE MASK).
5. ALL PATTERNS ARE VIEWED FROM THE PRIMARY SIDE LOOKING THROUGH THE BOARD.
6. UNLESS OTHERWISE SPECIFIED ALL HOLE DIAMETERS ARE AFTER PLATING.
7. APPLY SILKSCREEN USING WHITE NON-CONDUCTIVE EPOXY BASED INK.
8. PWB MUST BE 100% ELECTRICALLY TESTED FOR SHORTS AND CONTINUITY, USE NETLIST PROVIDED PER IAW IPC-D-356.
9. MARK DATE CODE AND MANUFACTURES IDENTIFICATION ON SOLDER SIDE PER IPC-6011 AND IPC-6012.
10. TOLERANCE ON ALL DRILL HOLES SHALL BE IAW IPC-D-2221 & 2222 UNLESS OTHERWISE SPECIFIED.
11. LAYERS 1 & 8 TO BE 50 OHMS CONTROLLED IMPEDANCE +/- 10% REFERENCE 10 MIL TRACES TO CLOSEST PLANE.
12. ALL EXTERNAL CONDUCTOR SURFACES SHALL BE GOLD PLATED; IMMERSION GOLD.

13. EPOXY FILL OR PLATE SHUT & PLATE OVER ALL .010 AND .018 DRILL HOLES.



DRILL INTERDRILL 08-08-2020

This document contains technical data, export of which is restricted by the U.S. Export Administration Regulations (EAR). Disclosure to foreign persons without prior U.S. Government approval is prohibited. Violations of these export laws and regulations are subject to severe civil and criminal penalties.



DRILL CHART: TOP to BOTTOM			
ALL UNITS ARE IN MILS			
FIGURE	SIZE	PLATED	QTY
⊙	10.0	PLATED	38
+	18.0	PLATED	351
△	41.0	PLATED	71
⊙	45.0	PLATED	6
+	73.0	PLATED	6
⊙	80.0	PLATED	8
⊙	95.0	PLATED	8
⊙	50.0	NON-PLATED	2
⊙	106.0	NON-PLATED	4
⊙	128.0	NON-PLATED	6

SEE NOTES 13

Drawn By:	Date Drawn:	Engineer:
RICHARD KOVACS	08/06/2020	Fabrication Drawing
Released By:	Date Released:	
		ISL73141SEHEV12
Checked By:	Date Checked:	Fabrication Drawing
Interdata	NAME:	NAME IN
	ISL73141SEHEV12B	8
		1 of 1