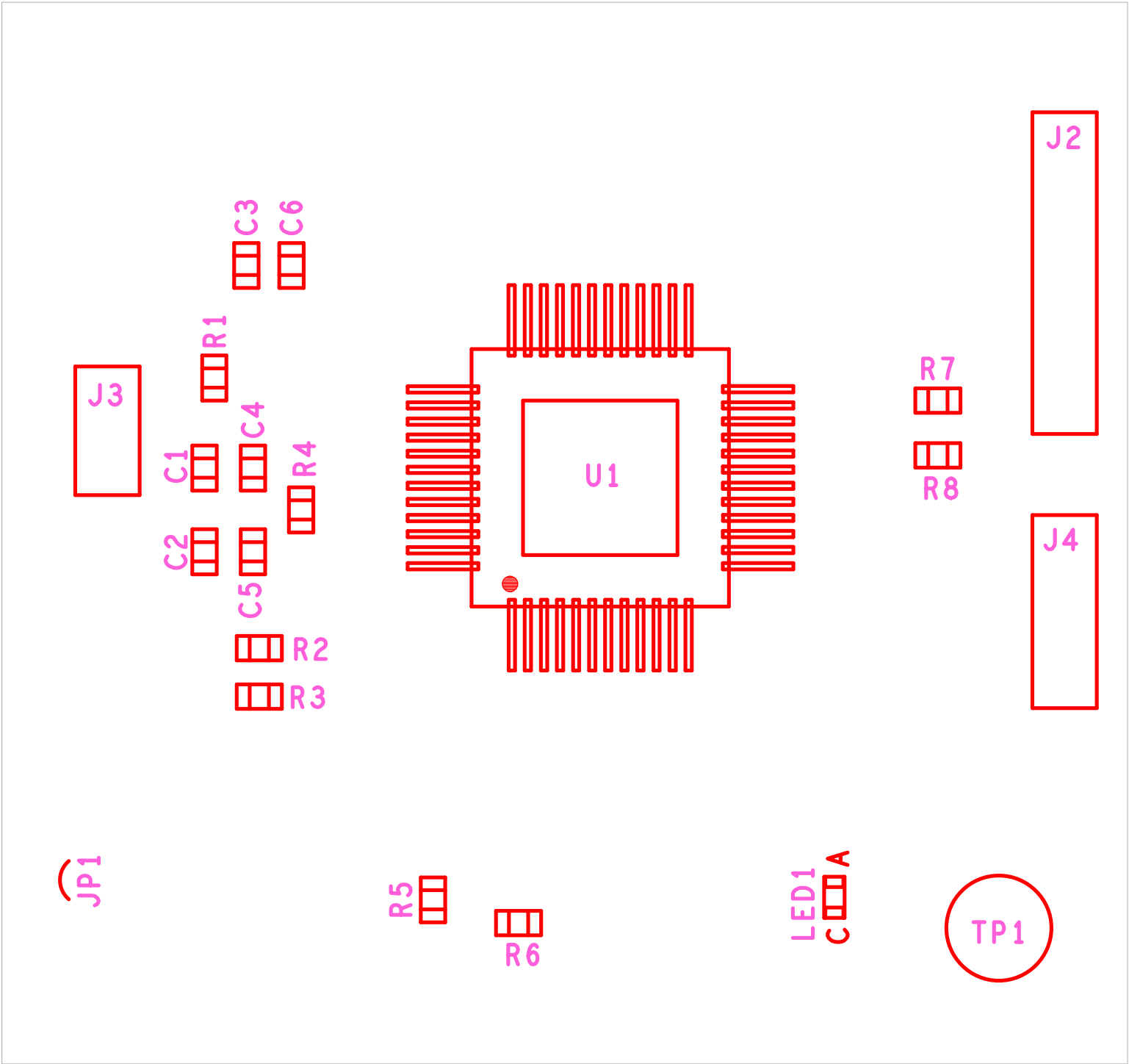


ISL74420SEHDEMO01Z Rev.A

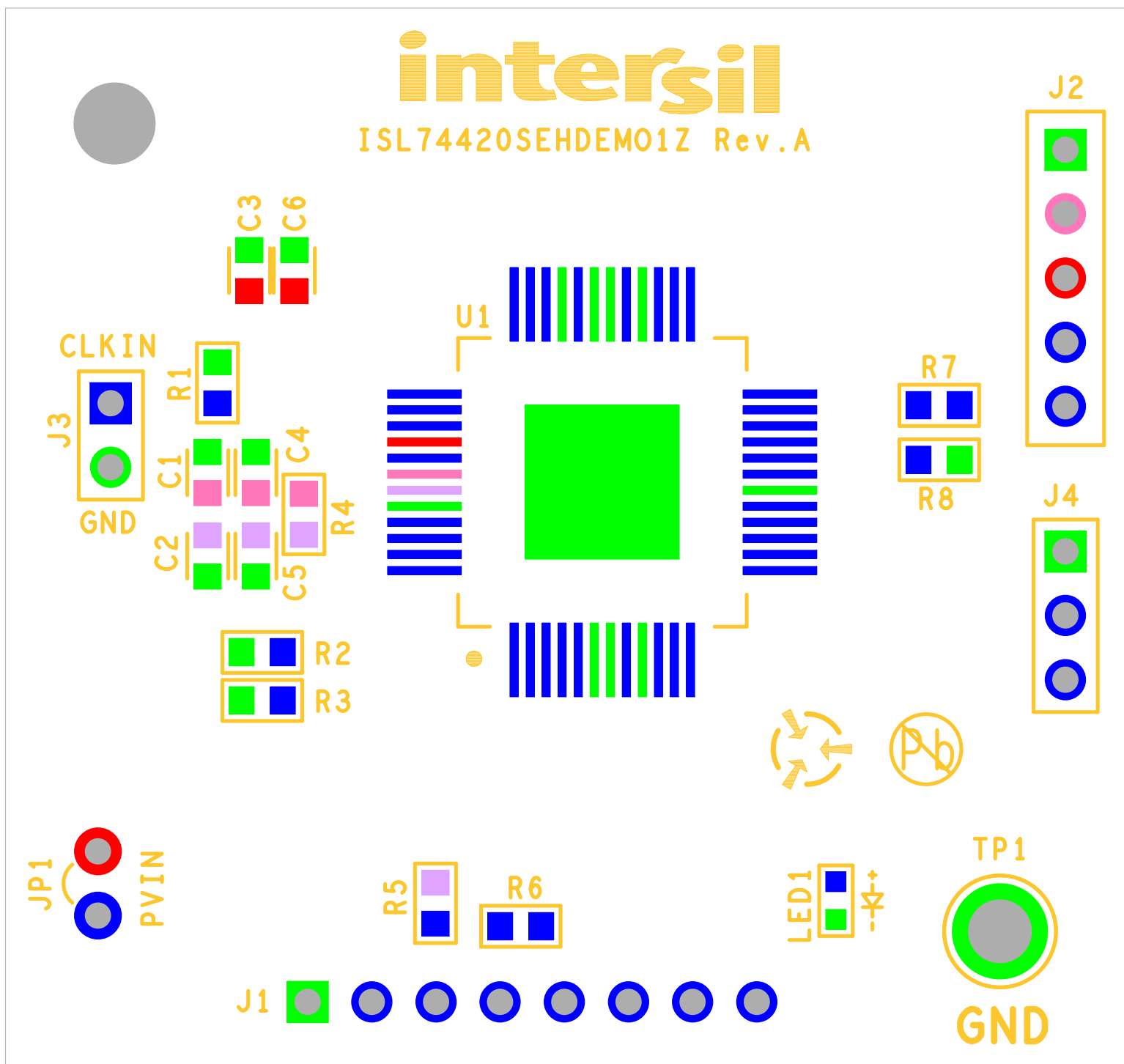


ASSEMBLY TOP
INTERASIL
07-12-2023

ISL74420SEHDEMO01Z Rev.A

intersil

ISL74420SEHDEMO01Z Rev.A

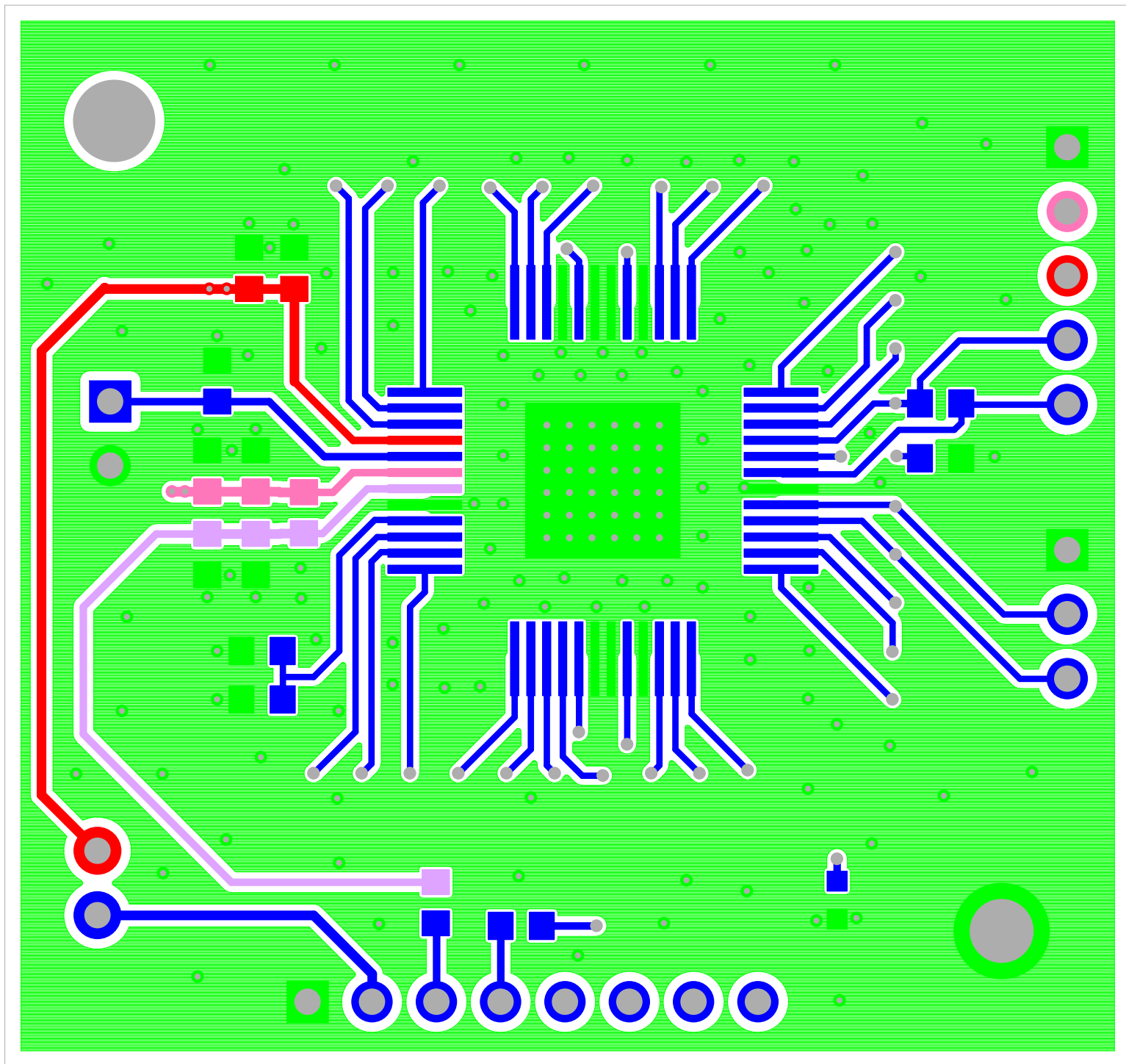


SILK SCREEN TOP

INTERASIL

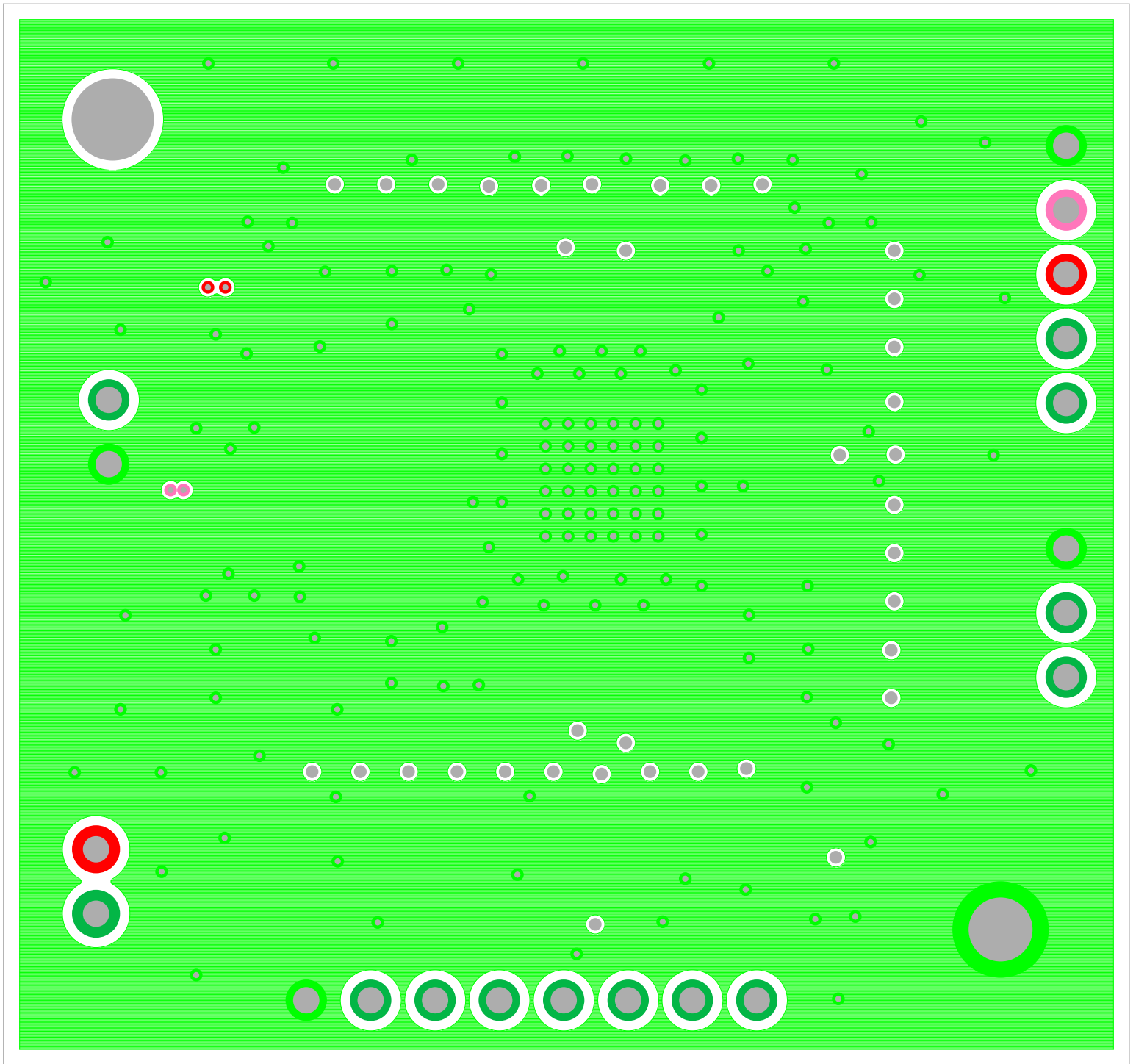
07-12-2023

ISL74420SEHDEMO1Z Rev.A



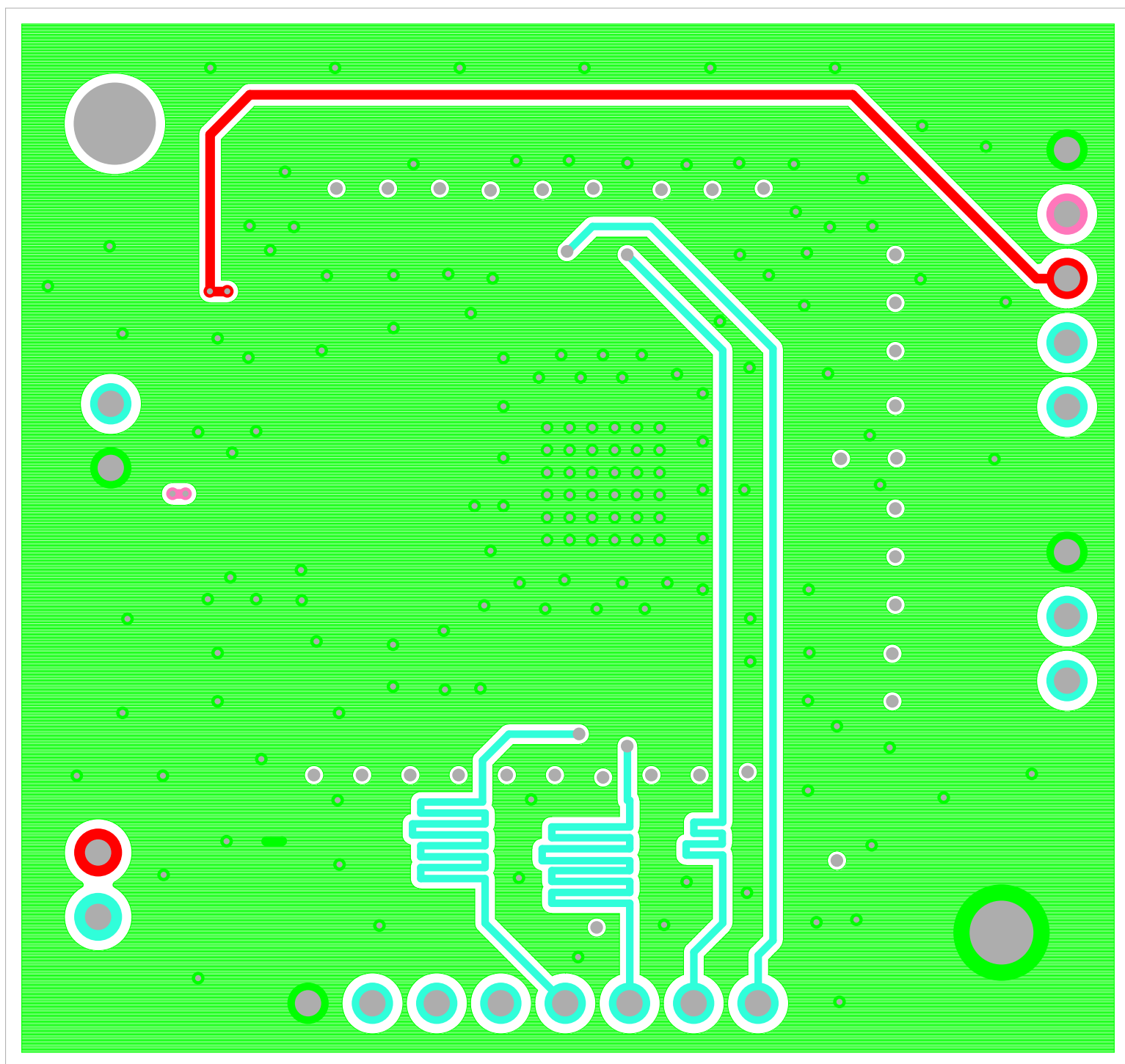
TOP LAYER COMPONENT SIDE
INTERSIL
07-12-2023

ISL74420SEHDEMO01Z Rev.A



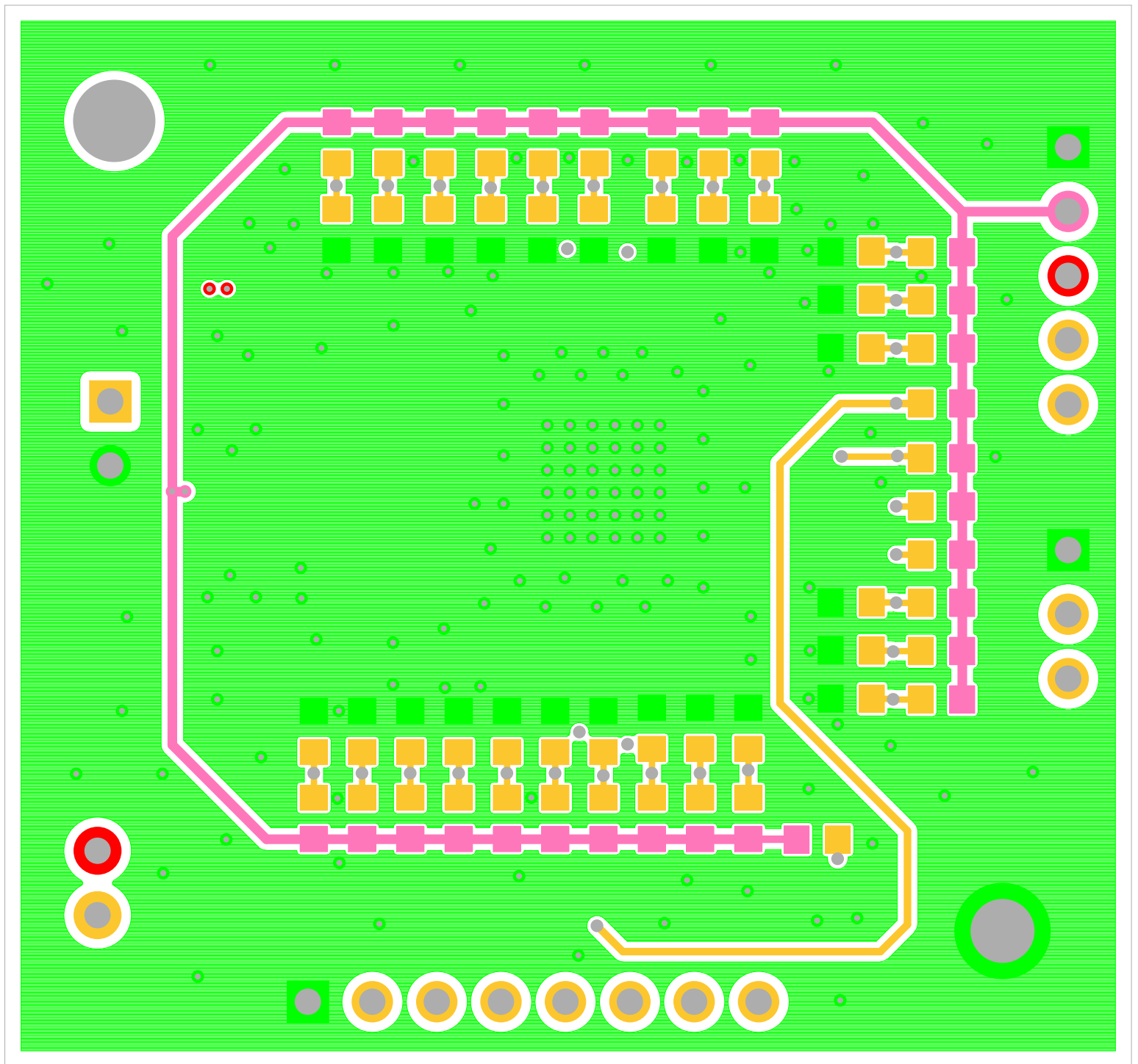
LAYER 2
INTERSIL
07-12-2023

ISL74420SEHDEMO1Z Rev.A



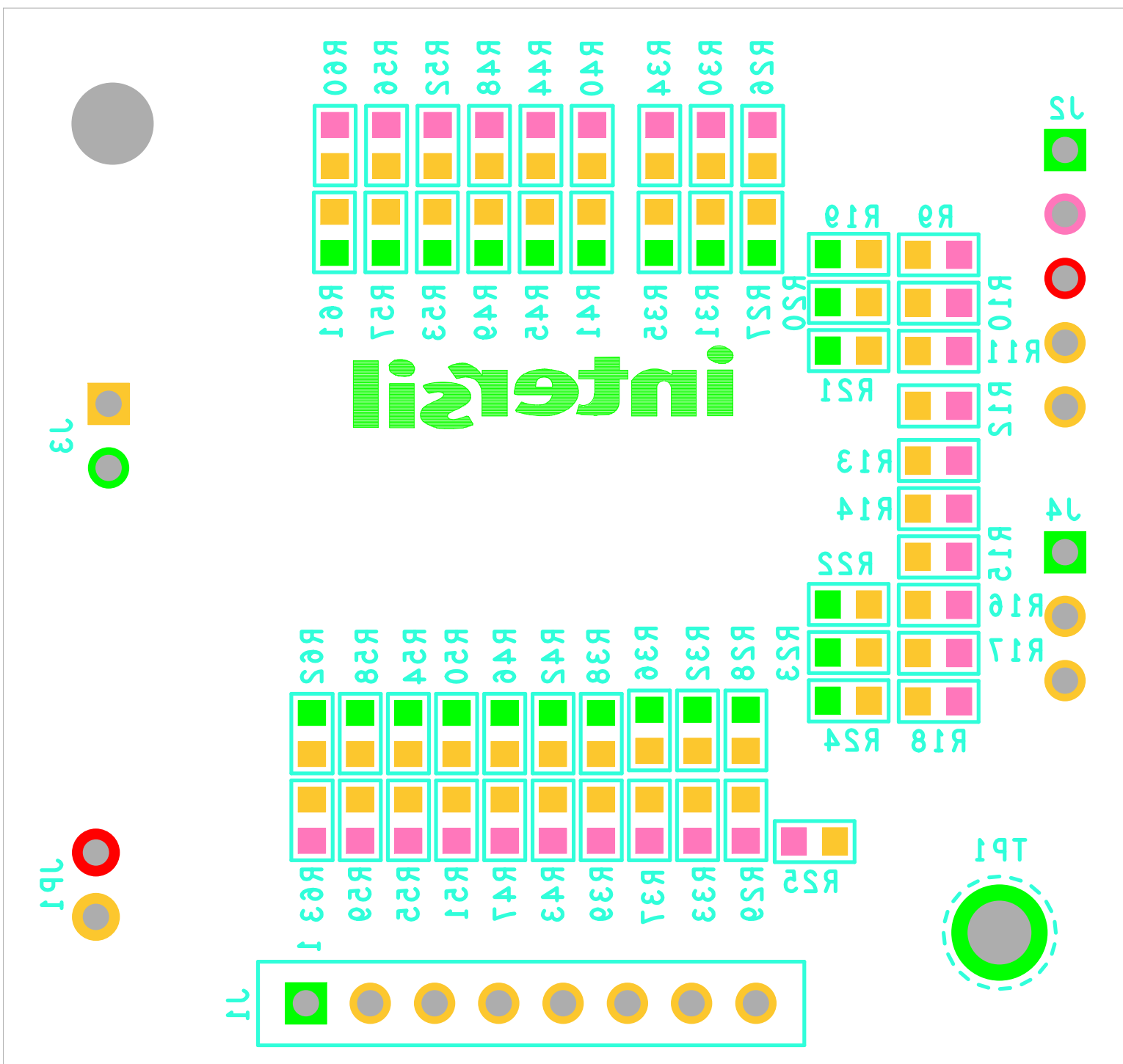
LAYER 3
INTERSIL
07-12-2023

ISL74420SEHDEMO01Z Rev.A



BOTTOM LAYER SOLDER SIDE
INTERSIL
07-12-2023

ISL74420SEHDEMO01Z Rev.A

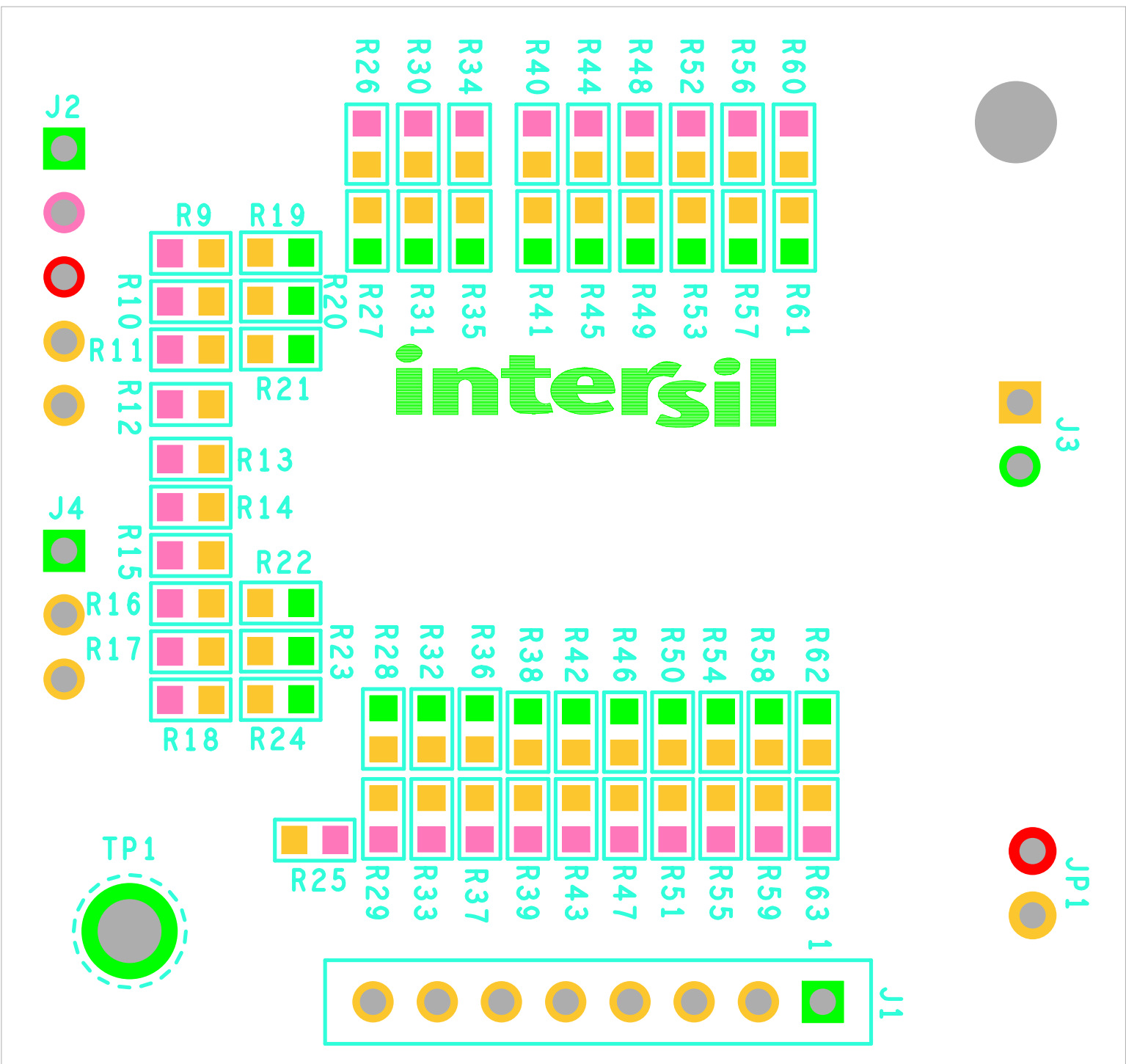


SILK SCREEN BOTTOM

INTERSIL

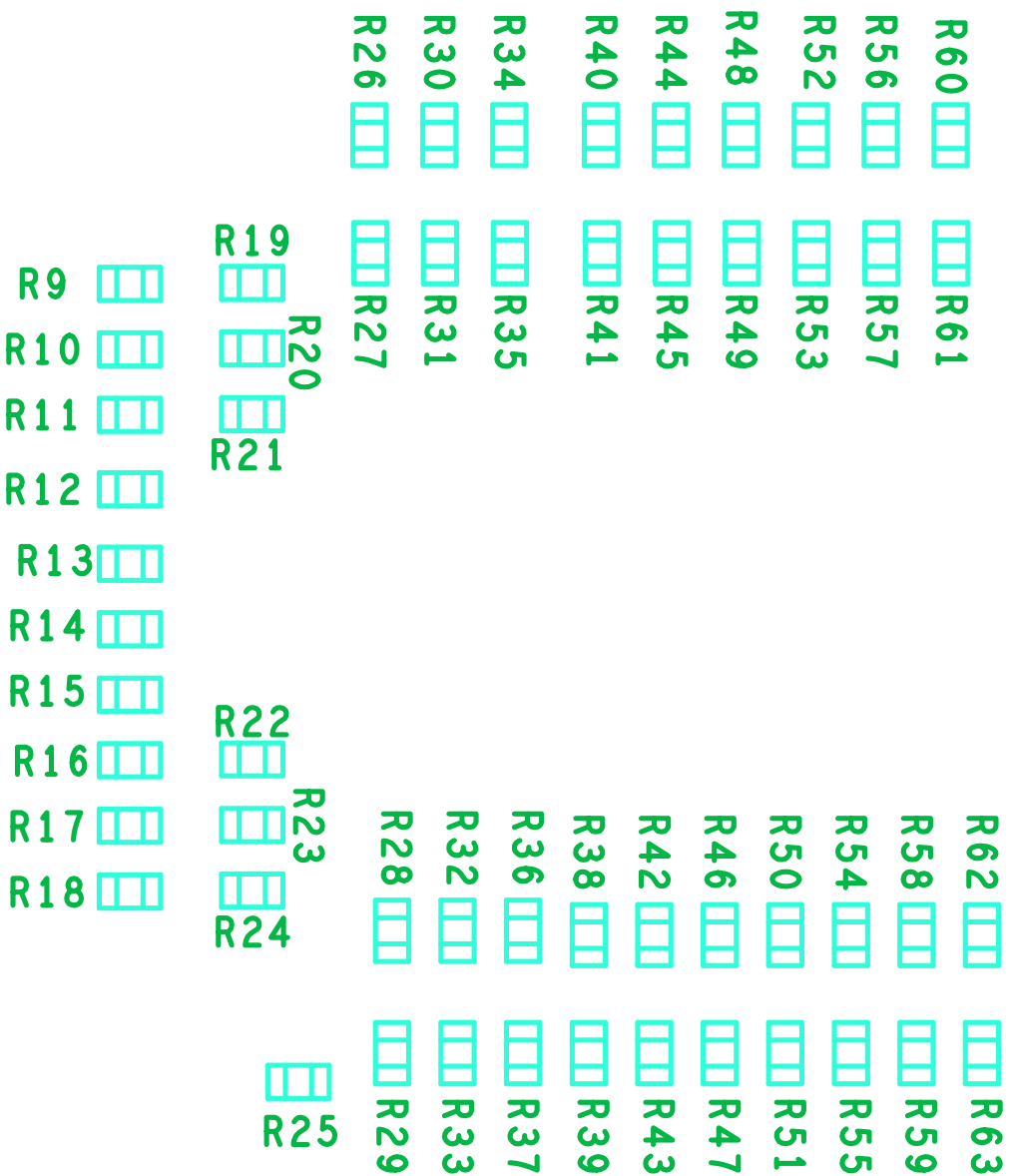
07-12-2023

I2LJ44502EHDEM01Z Rev.A

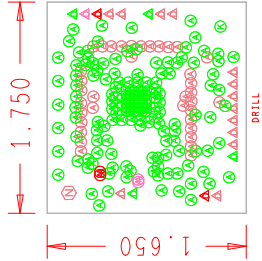
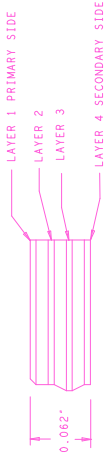


01-15-5053
INTERIL
SILK SCREEN BOTTOM

01-15-5053
INTERSTIL
ASSEMBLY BOTTOM



1214502EHDEM015 Rev.A



DRILL CHART: TOP to BOTTOM			
ALL UNITS ARE IN MILS			
FIGURE	SIZE	PLATED	QTY
⊗	10.0	PLATED	162
⊙	11.0	PLATED	36
△	41.0	PLATED	20
⊗	100.0	PLATED	1
Ⓝ	128.0	NON-PLATED	1

NOTES:

1. THIS BOARD IS RoHS COMPLIANT.
2. PRINTED WIRING BOARD DESIGN AND ACCEPTANCE CRITERIA SHALL BE IAW WITH THE REQUIREMENTS OF IPC-D-275 AND IPC-A-600.
3. MATERIAL: FR4 (RoHS COMPLIANT), 1 OZ COPPER.
4. APPLY SOLDER MASK, BOTH SIDES OVER BARE COPPER IAW IPC-SM-840 .
CLASS 2 (LPI) (BLUE MASK).
5. ALL PATTERNS ARE VIEWED FROM THE PRIMARY SIDE LOOKING THROUGH THE BOARD.
6. UNLESS OTHERWISE SPECIFIED ALL HOLE DIAMETERS ARE AFTER PLATING.
7. APPLY SILKSCREEN USING WHITE NON-CONDUCTIVE EPOXY BASED INK.
8. PWB MUST BE 100% ELECTRICALLY TESTED FOR SHORTS AND CONTINUITY.
USE NETLIST PROVIDED ISL74420SEHDEM01ZA IPC356.IPC IAW IPC-D-356.
9. MARK DATE CODE AND MANUFACTURES IDENTIFICATION ON SOLDER SIDE
PER IPC-6011 AND IPC-6012.
10. TOLERANCE ON ALL DRILL HOLES SHALL BE IAW IPC-D-2221 & 2222 UNLESS OTHERWISE SPECIFIED.
11. ALL 11 MIL VIA'S ARE TO BE THERMAL EPOXY FILLED AND CAPPED.

Drawn By: Tim Klemann	Date Drawn: 07/12/2023	Engineer: Ross Kerley
Released By:	Date Released:	ISL74420SEH DEMO BOARD LAYOUT
Updated By:	Date Updated:	MASK# HDWR ID REV: A
		FILENAME: 1 of 1