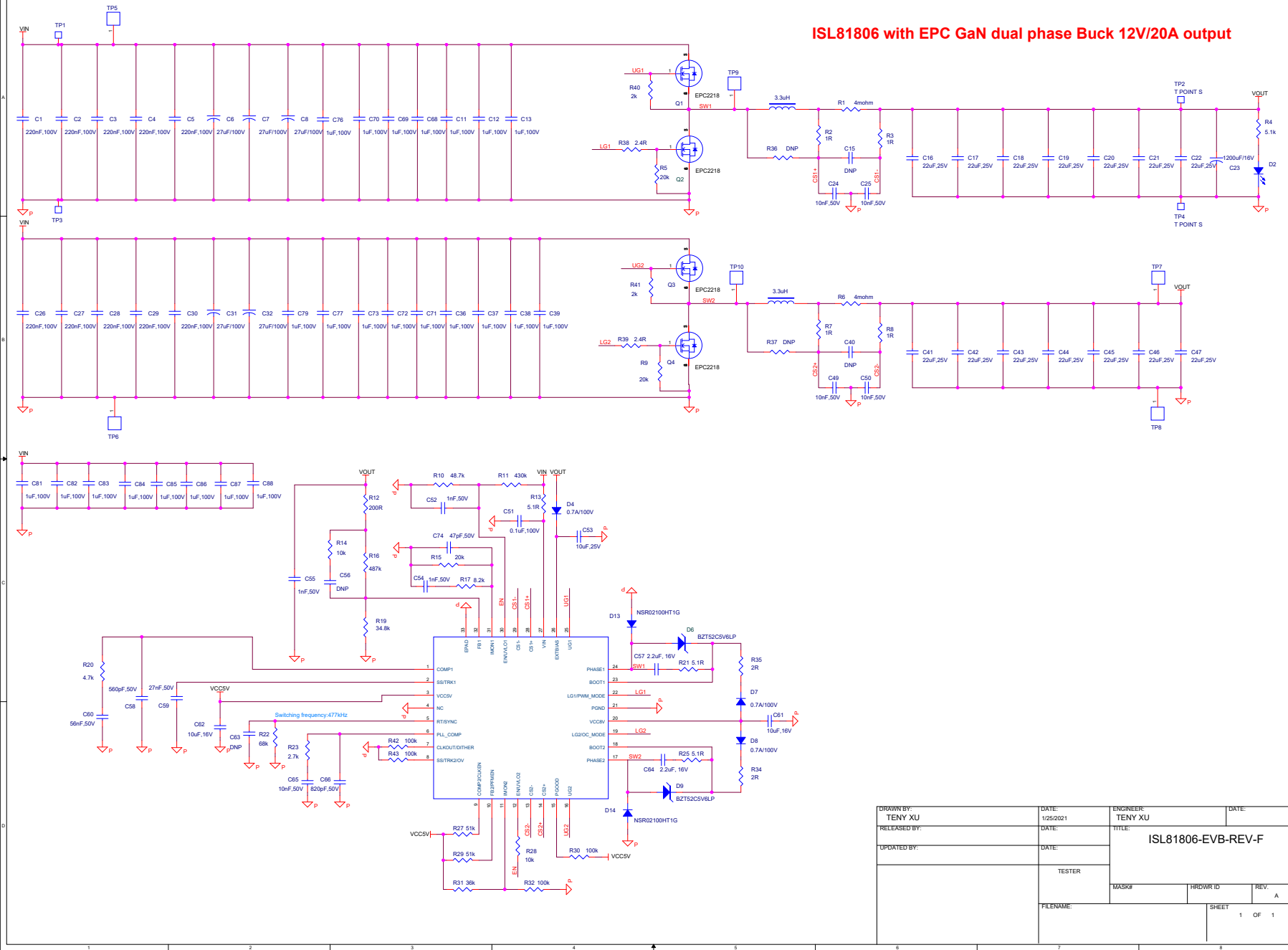


ISL81806 with EPC GaN dual phase Buck 12V/20A output



DRAWN BY: TENY XU	DATE: 1/25/2021	ENGINEER: TENY XU	DATE:
RELEASED BY:	DATE:	TITLE: ISL81806-EVB-REV-F	
UPDATED BY:	DATE:	TESTER	
		FILENAME:	
		MASK#	REV. A
		HWDRG TO	
		SHEET	1 OF 1