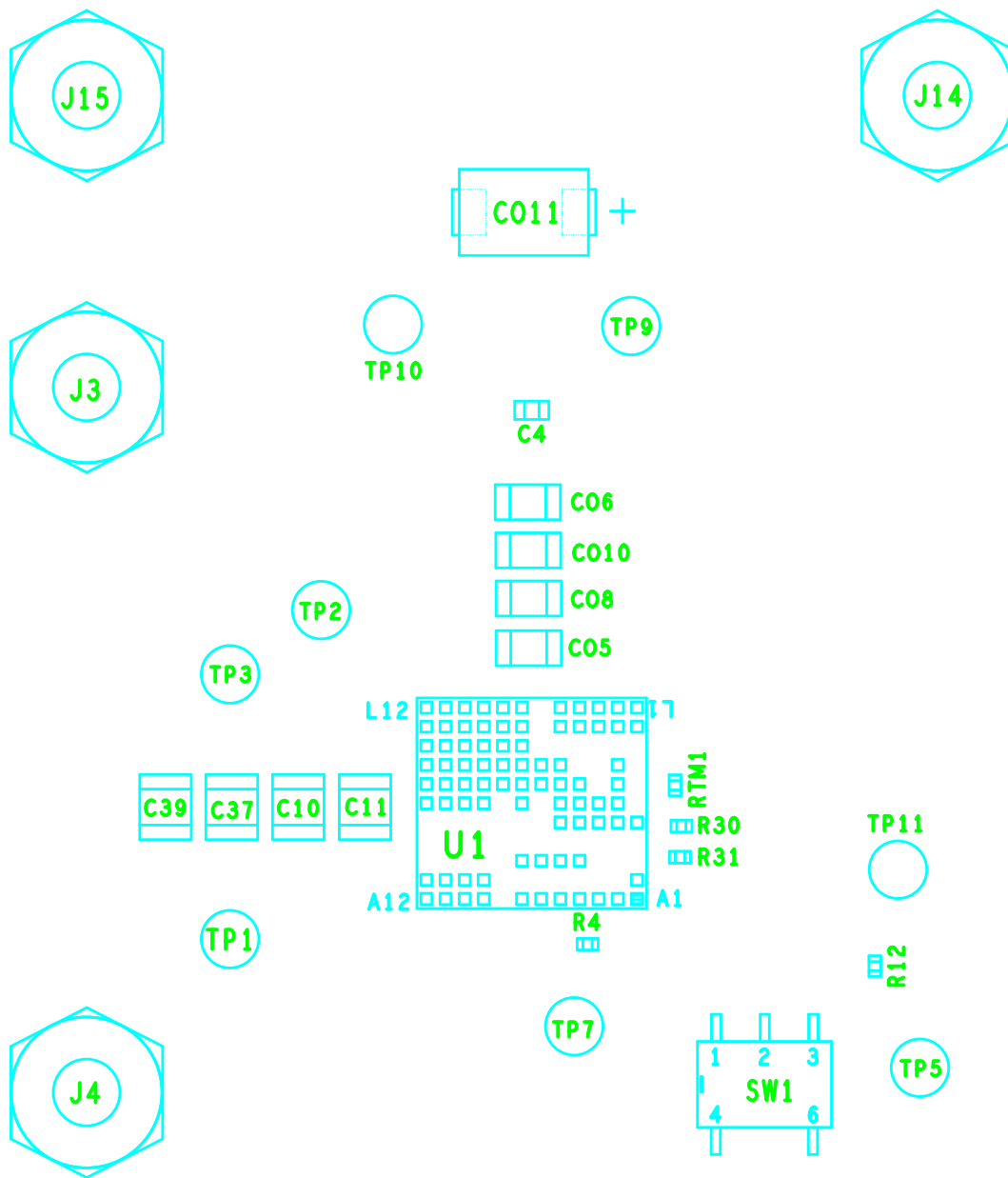
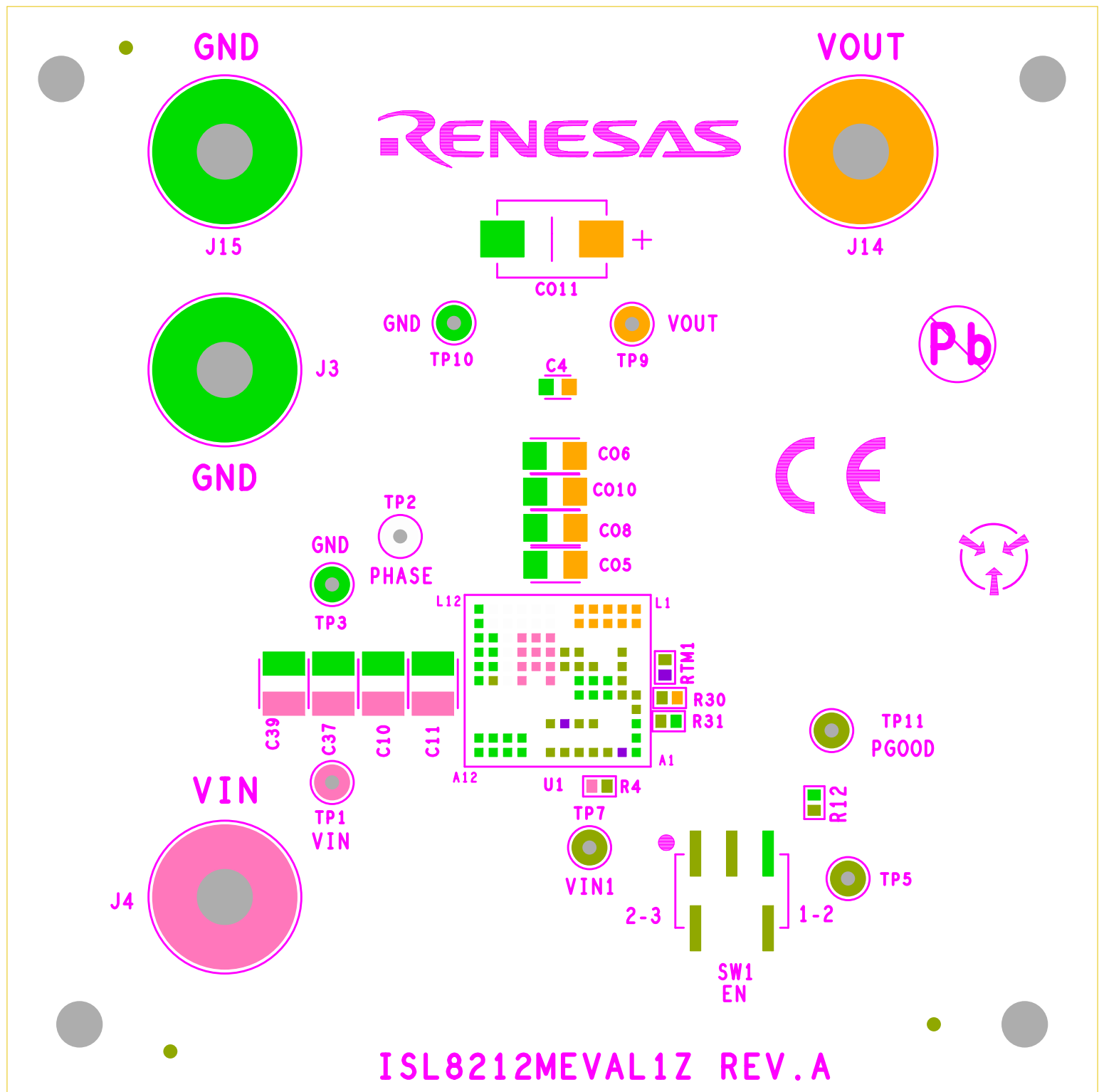


# ISL8212MEVAL1Z Rev.A



ASSEMBLY TOP  
RENESAS CORPORATION  
10-18-2018

# ISL8212MEVAL1Z Rev.A

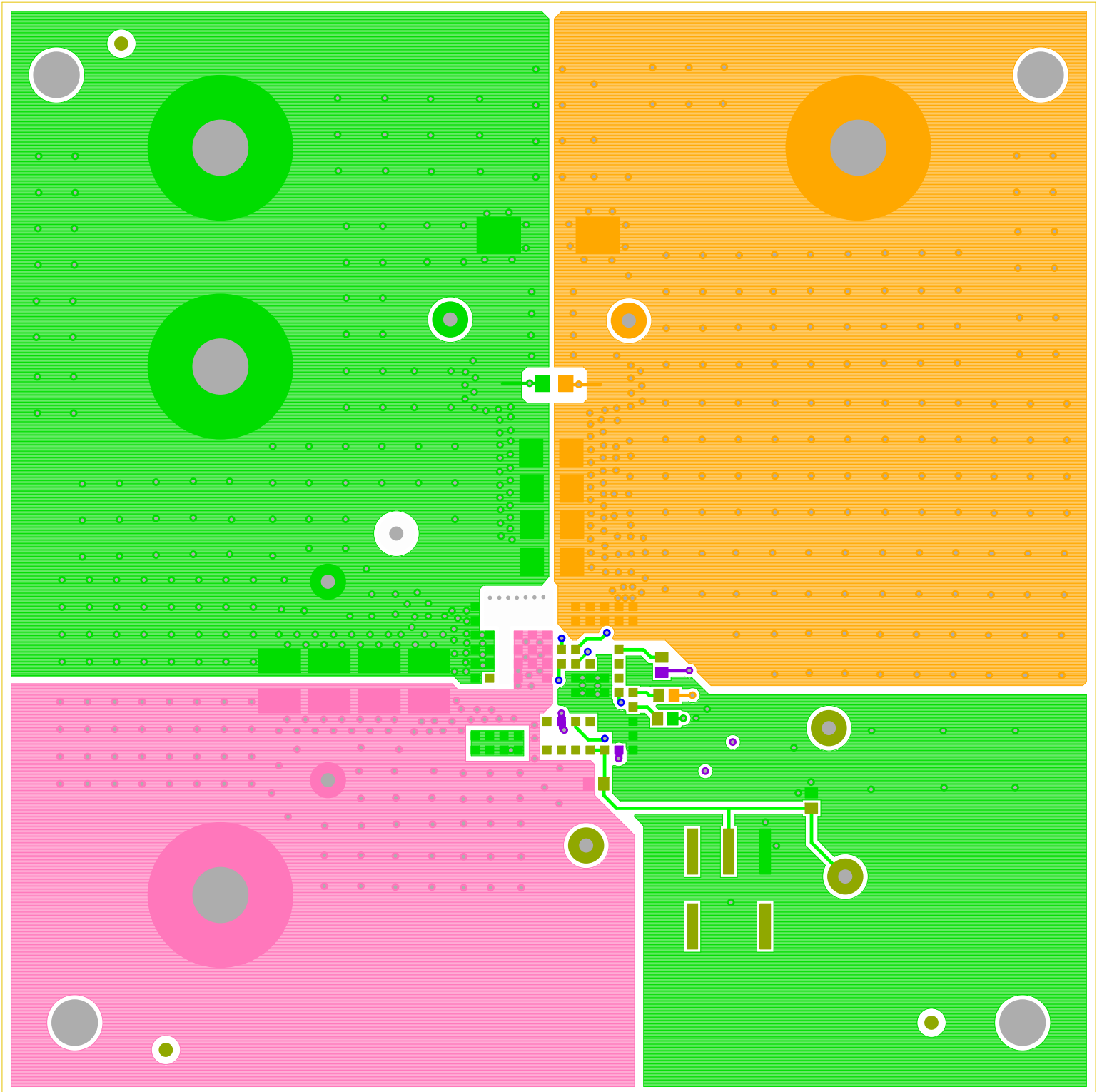


SILK SCREEN TOP

RENEASAS CORPORATION

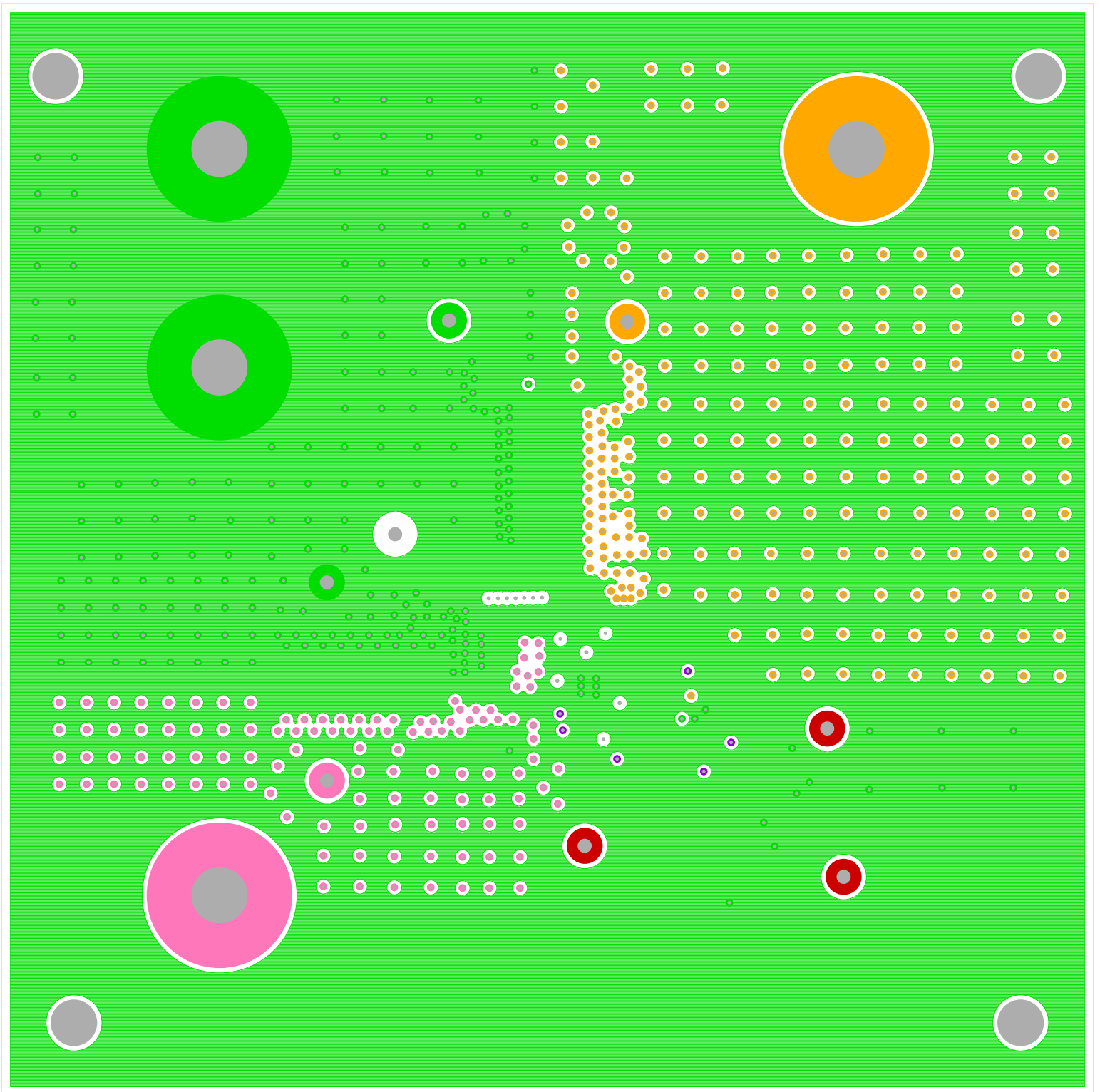
10-18-2018

ISL8212MEVAL1Z Rev.A



TOP LAYER COMPONENT SIDE  
RENESAS CORPORATION  
10-18-2018

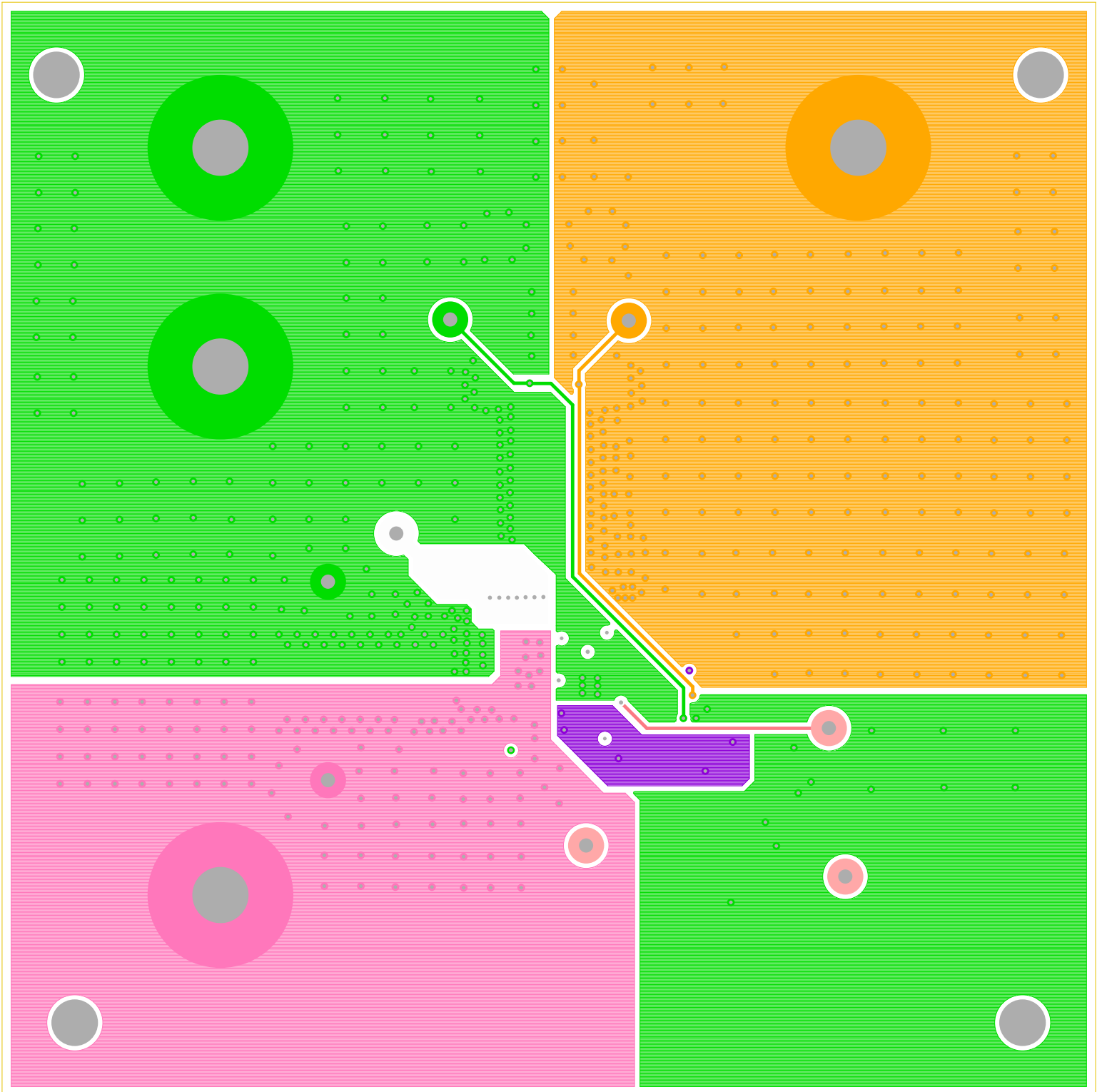
ISL8212MEVAL1Z Rev.A



LAYER 2

RENESAS CORPORATION  
10-18-2018

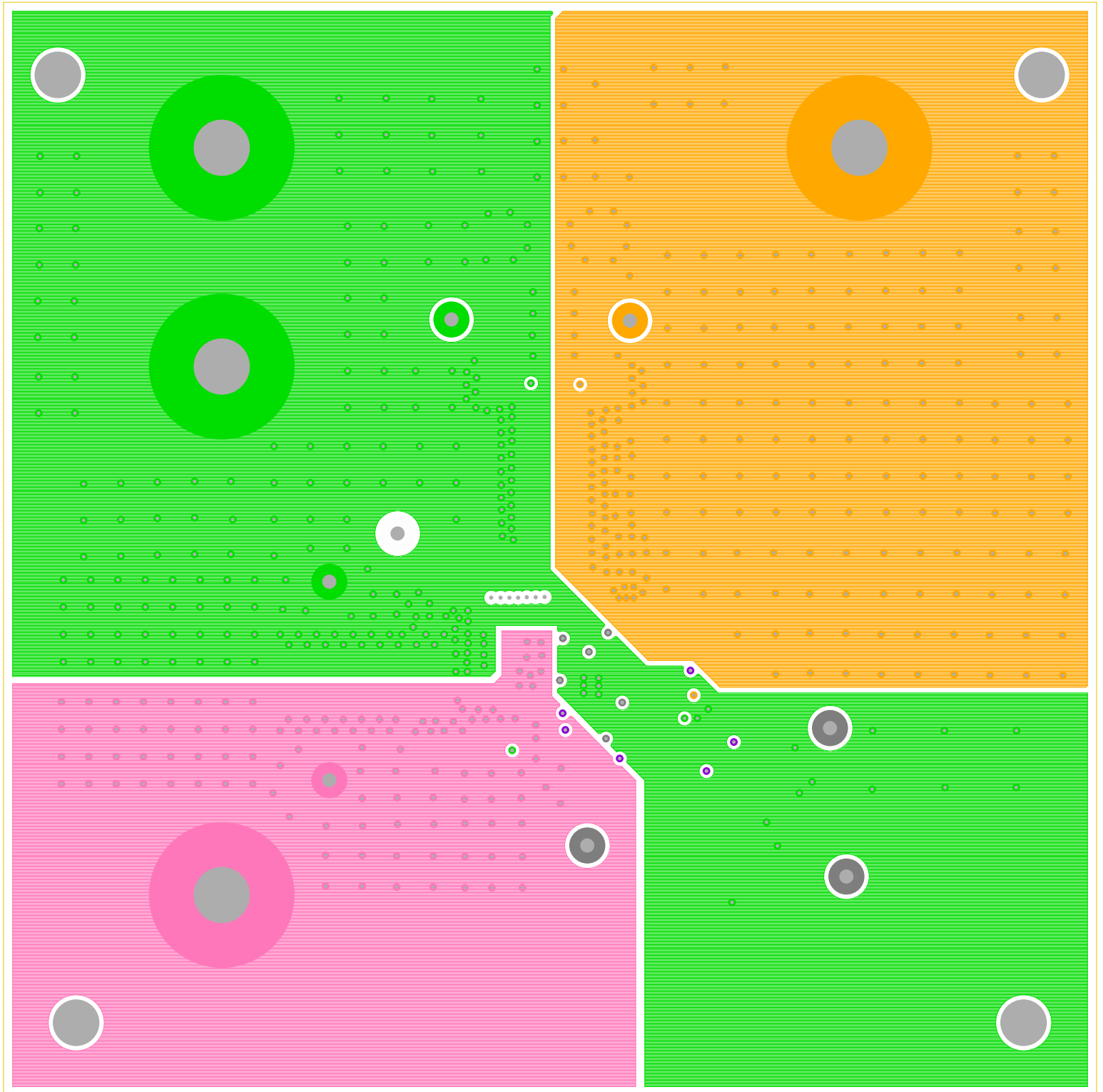
ISL8212MEVAL1Z Rev.A



LAYER 3

RENESAS CORPORATION  
10-18-2018

ISL8212MEVAL1Z Rev.A



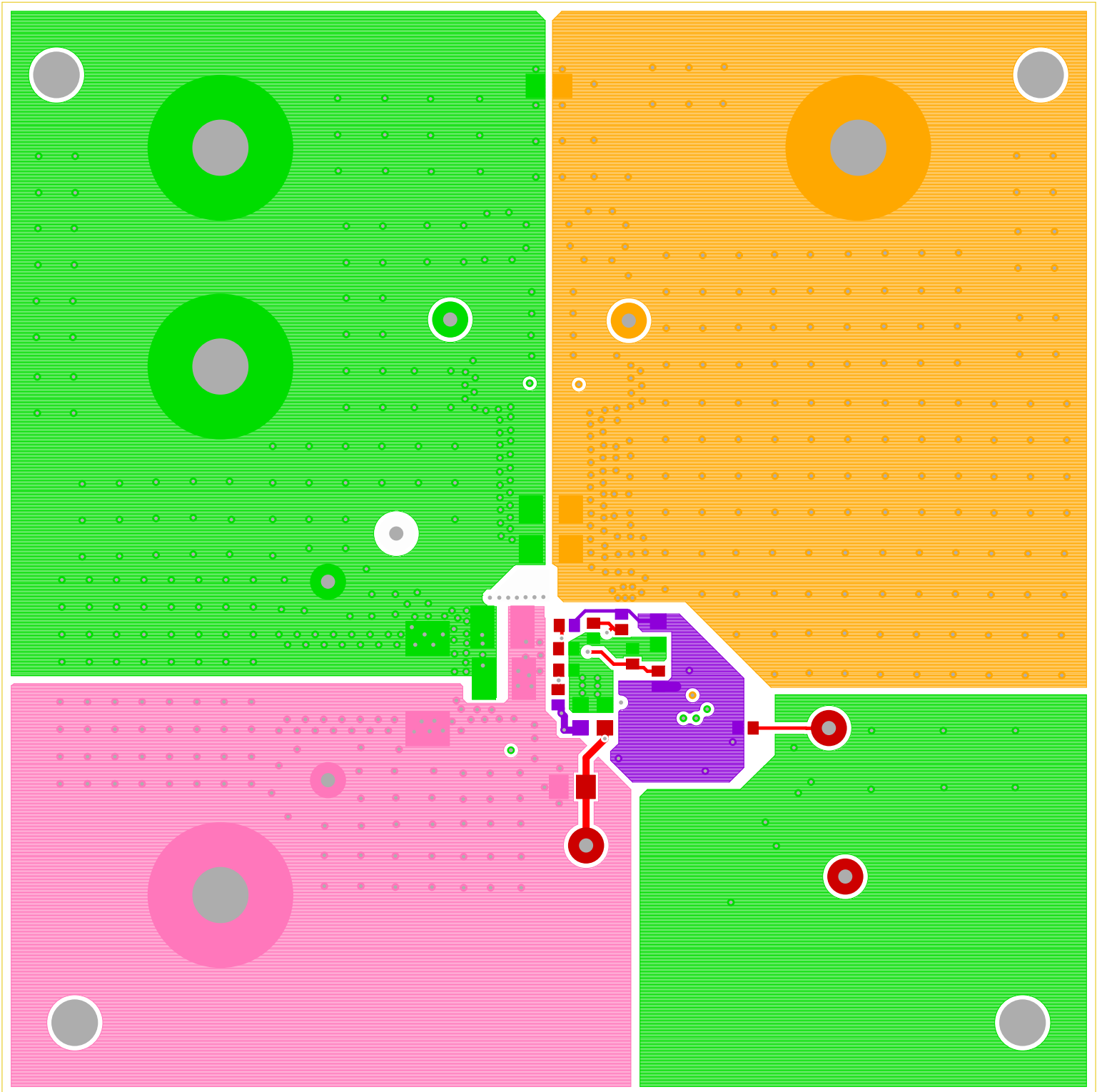
LAYER 4

RENESAS CORPORATION  
10-18-2018

This abstract visualization is set against a solid green background. It features several large, concentric circles in different colors: gray, green, orange, and pink. These circles are scattered across the frame, with some appearing as simple outlines and others as filled shapes. A prominent feature is a large, dense grid of small orange dots on the right side, which appears to be a structured data set or a simulation. Other clusters of small dots in green, pink, and purple are scattered throughout, often forming irregular shapes. The overall composition suggests a complex system or a data visualization of a physical process.

RENESAS CORPORATION  
10-18-2018

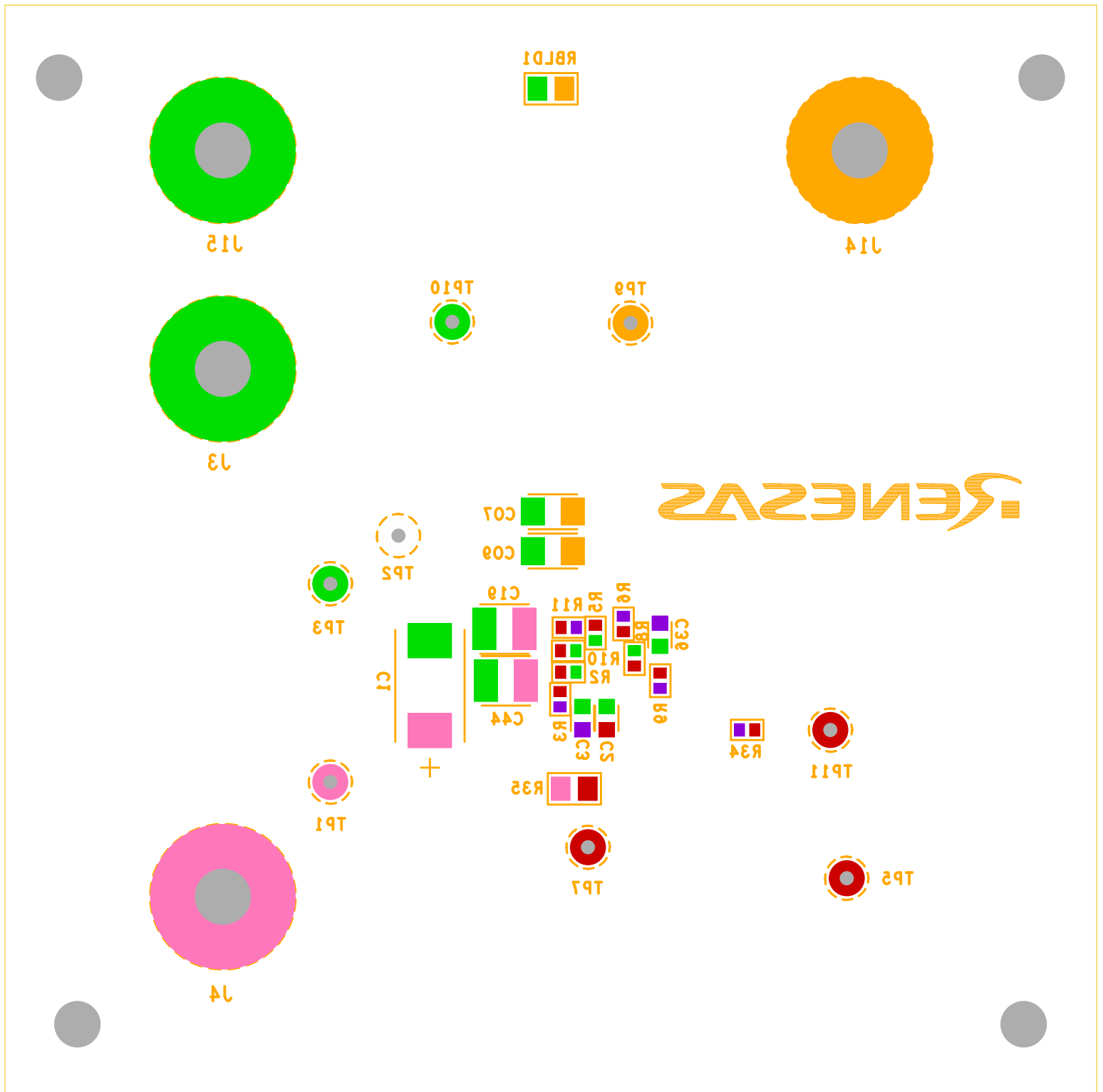
ISL8212MEVAL1Z Rev.A



BOTTOM LAYER SOLDER SIDE  
RENESAS CORPORATION  
10-18-2018

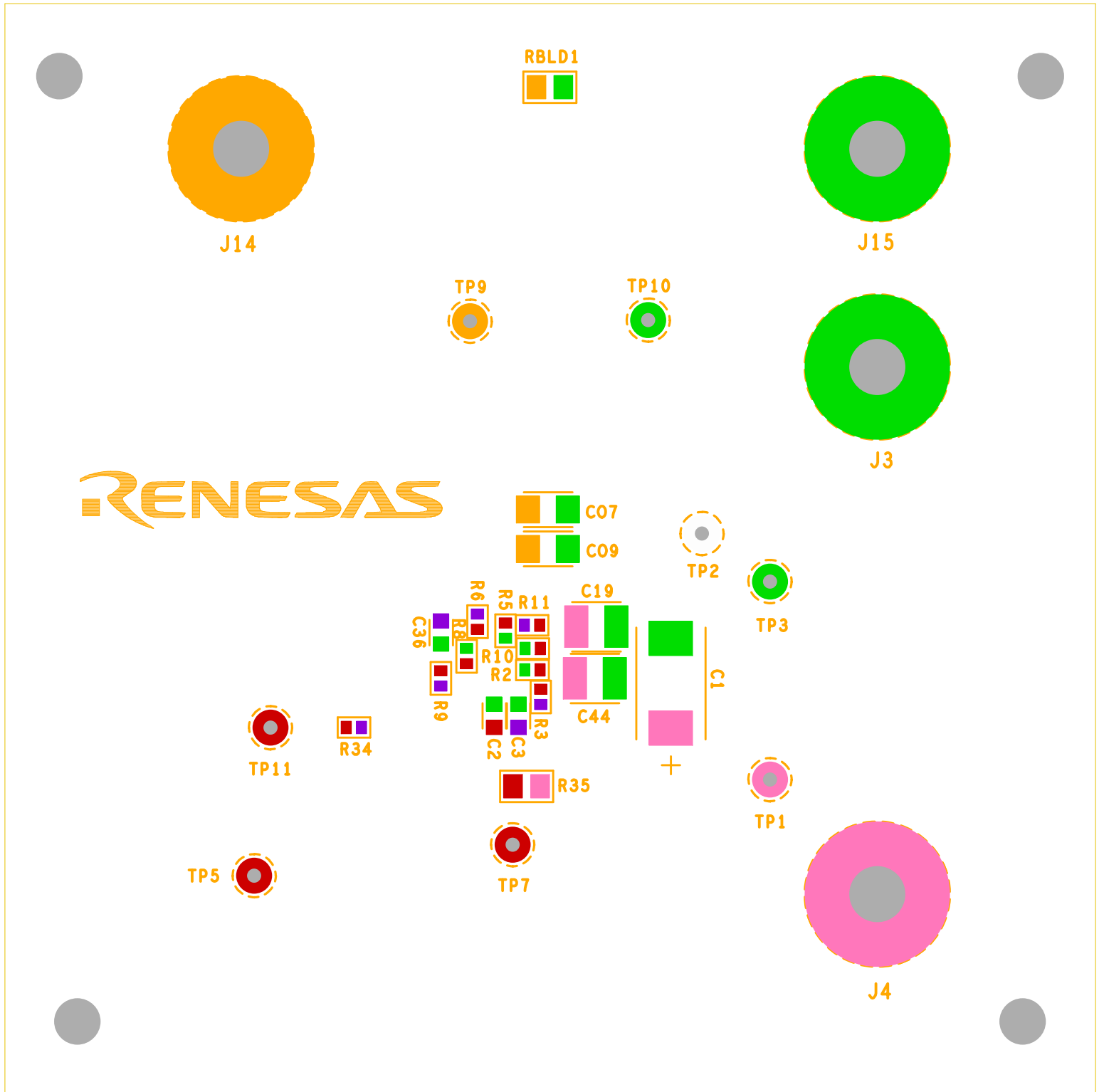


## ISL8212MEVAL1Z Rev.A



SILK SCREEN BOTTOM  
RENESAS CORPORATION  
10-18-2018

A.v9R 12L8S1SMEVAL12 Rev.A



10-18-2018  
RENEASIS CORPORATION  
SILK SCREEN BOTTOM

