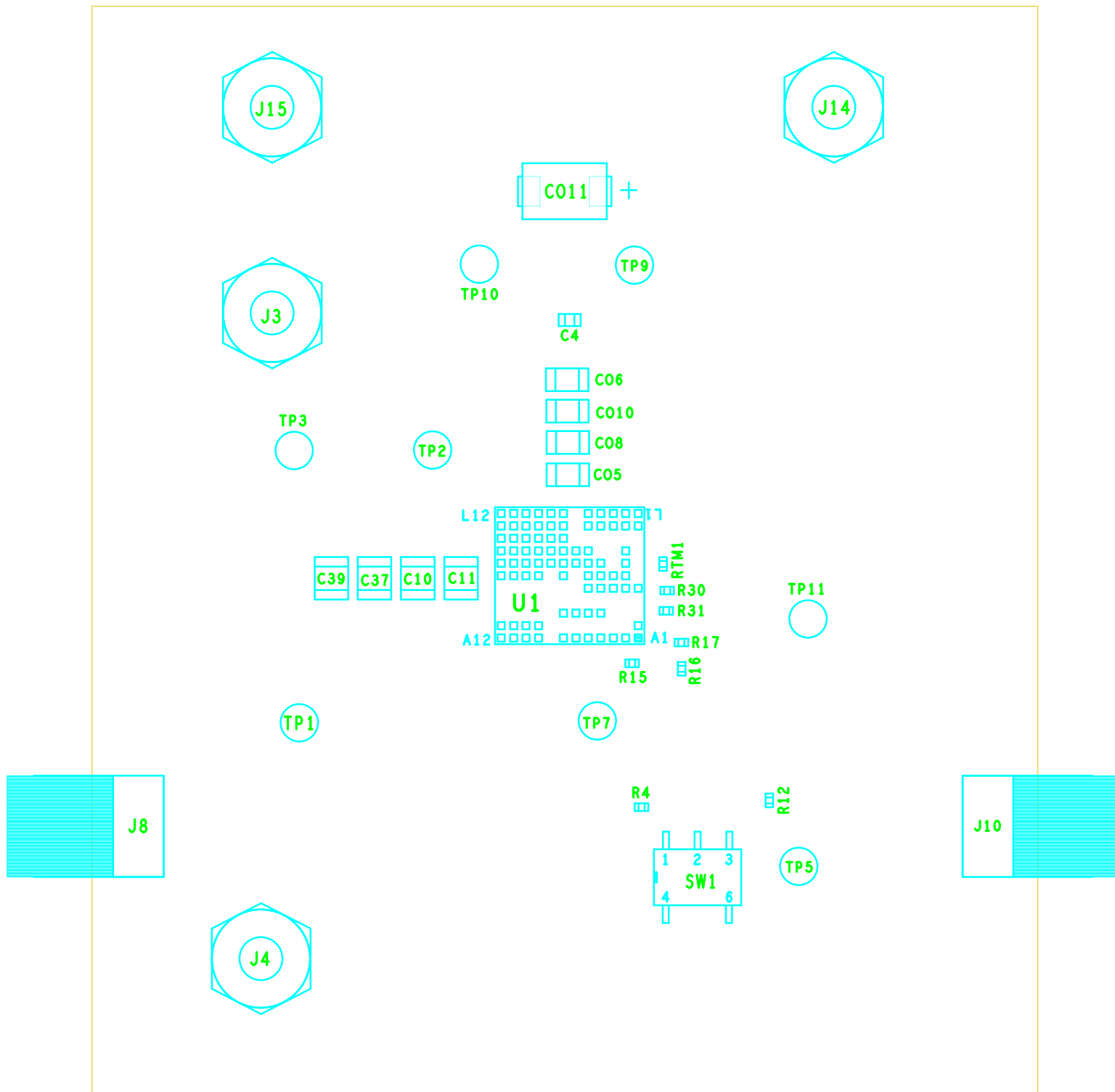


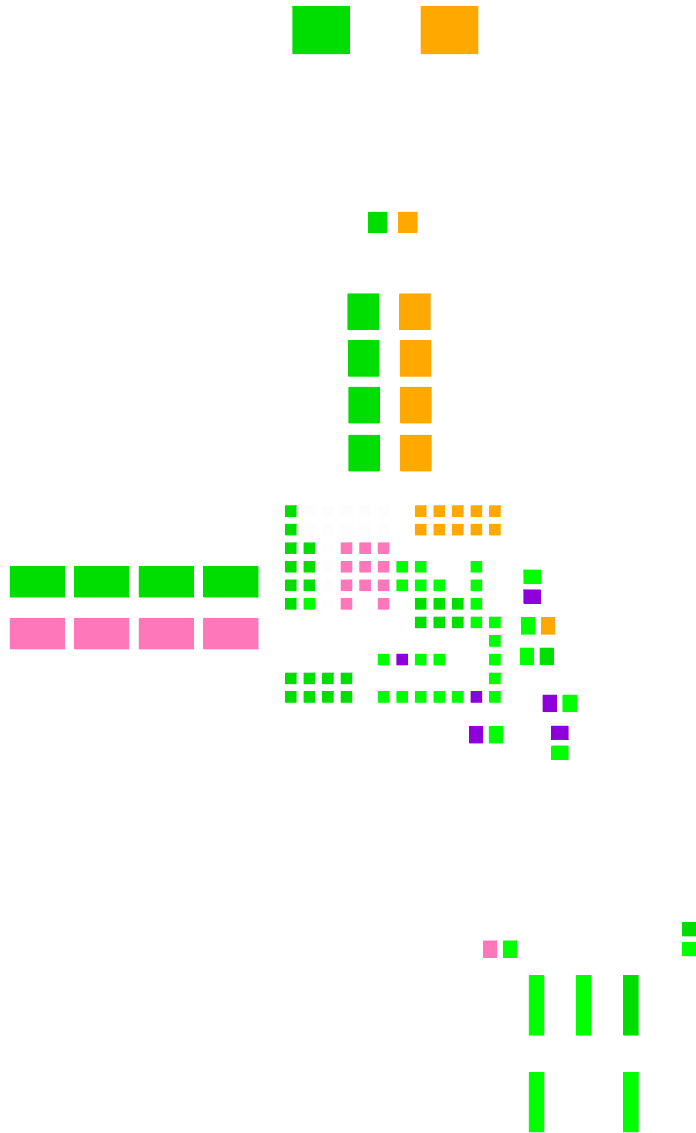
ISL8280MEVAL1Z Rev.A



ASSEMBLY TOP

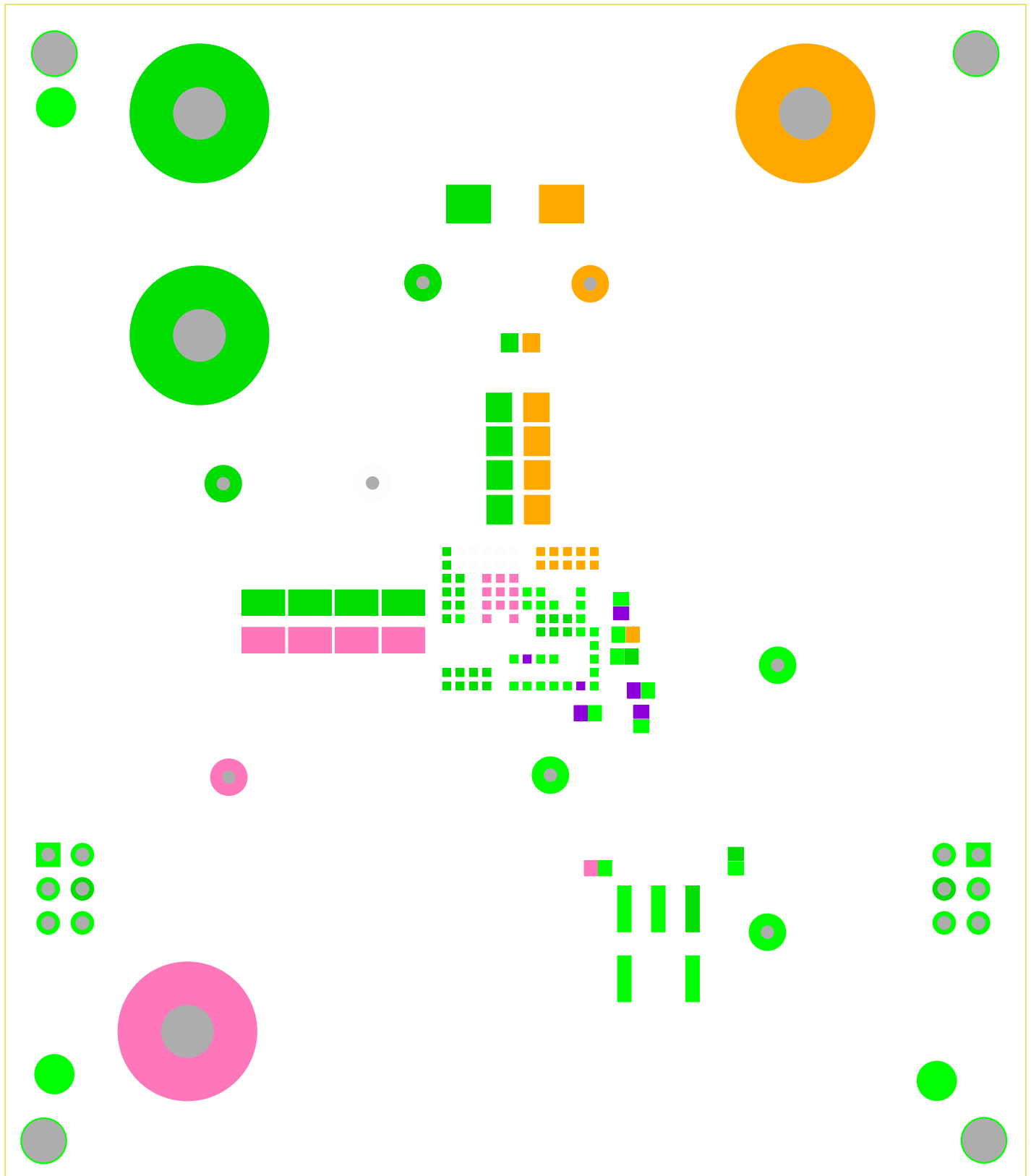
RENESAS CORPORATION

12-05-2018



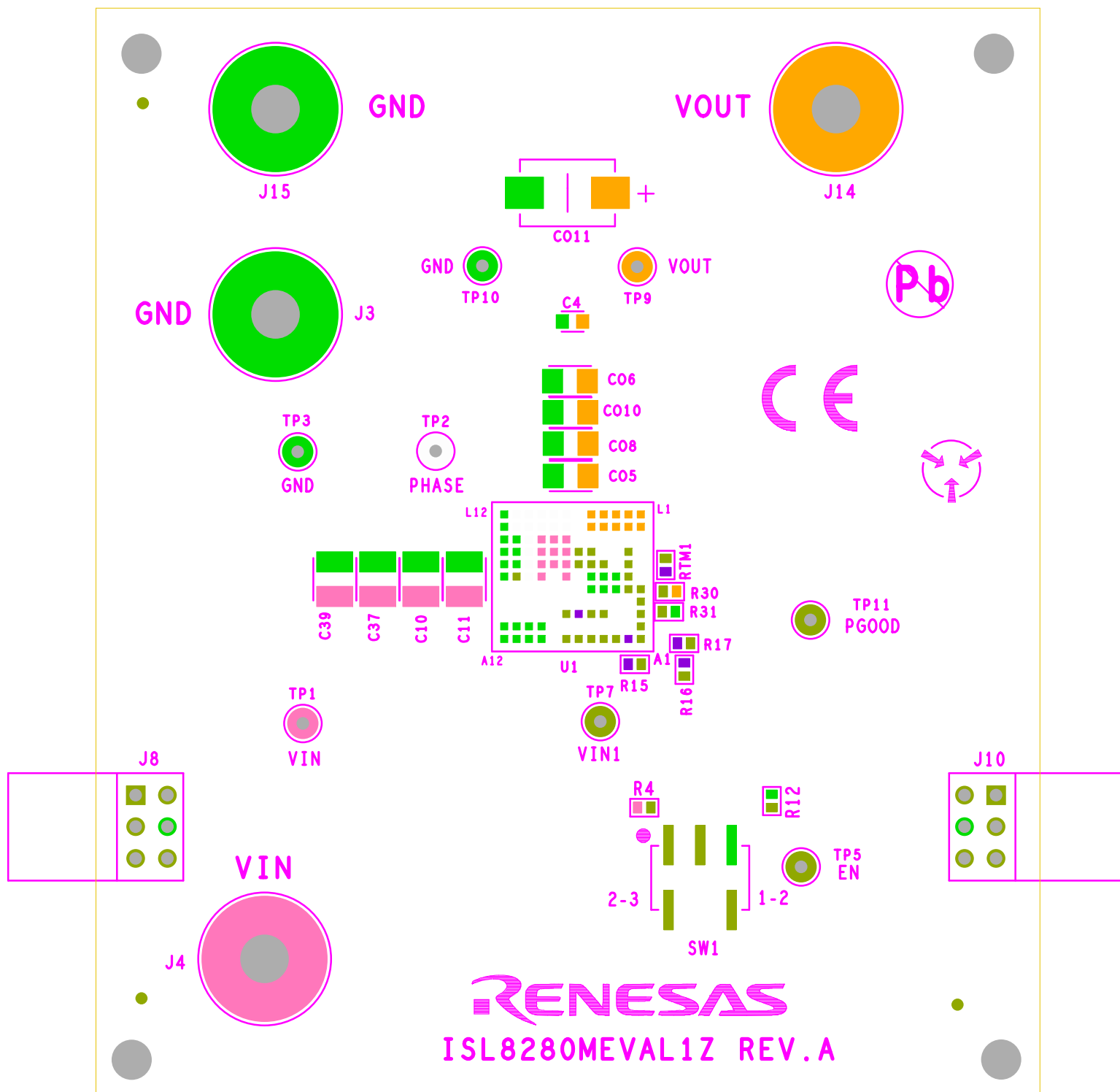
SOLDER PASTE TOP
RENESAS CORPORATION
12-05-2018

ISL8280MEVAL1Z Rev.A



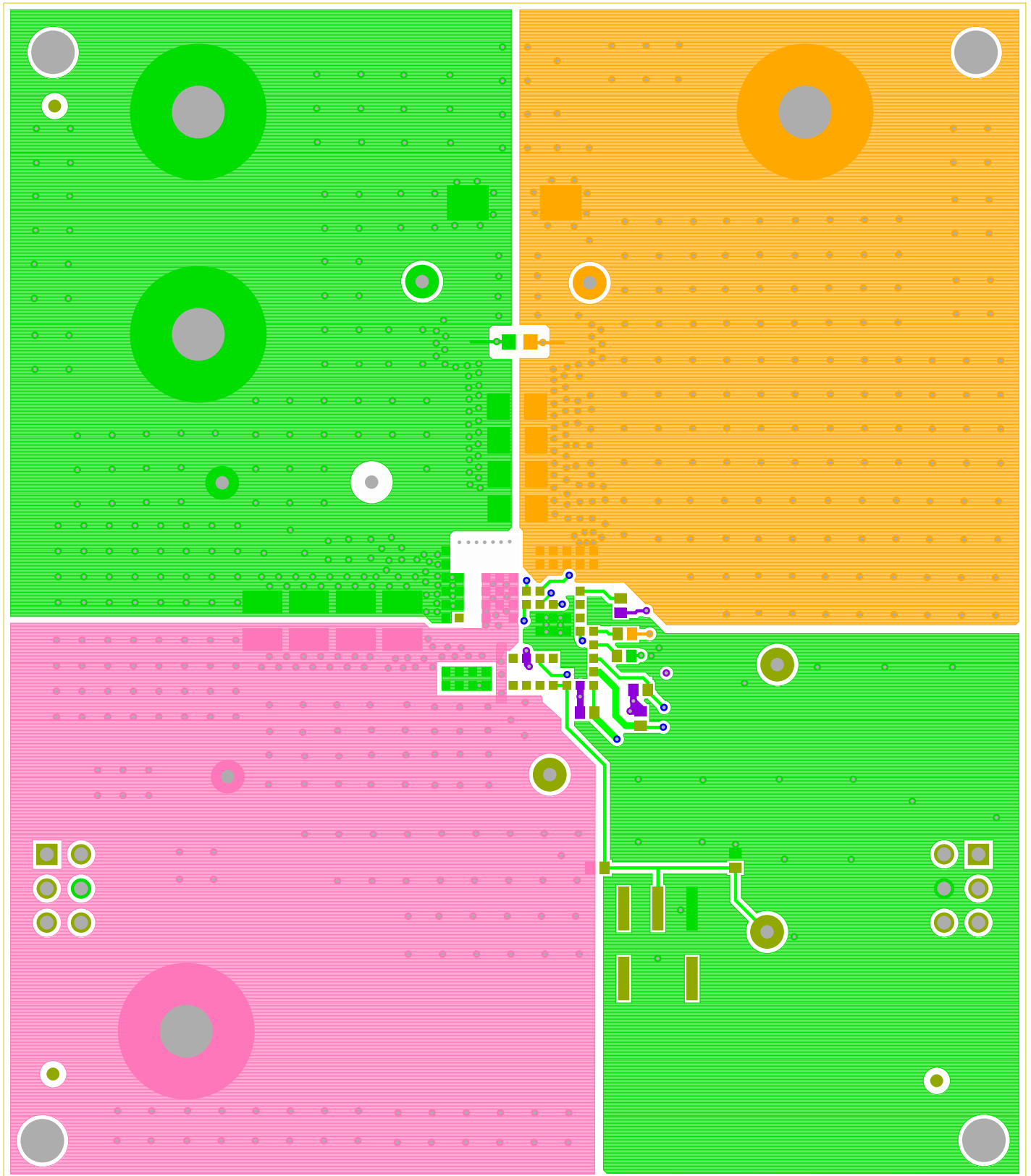
SOLDER MASK TOP
RENESAS CORPORATION
12-05-2018

ISL8280MEVAL1Z Rev.A



SILK SCREEN TOP
RENESAS CORPORATION
12-05-2018

ISL8280MEVAL1Z Rev.A

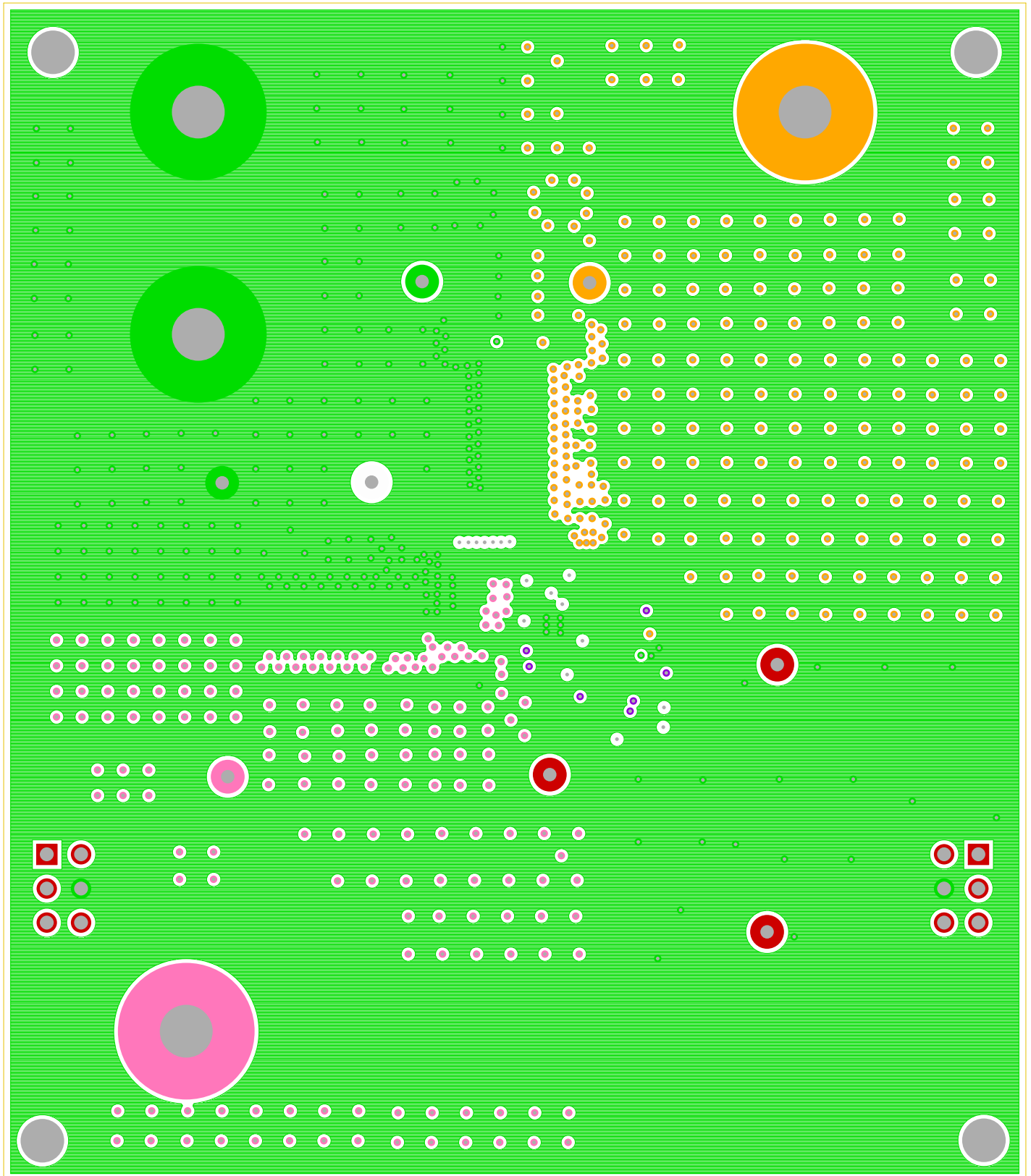


TOP LAYER COMPONENT SIDE

RENESAS CORPORATION

12-05-2018

ISL8280MEVAL1Z Rev.A

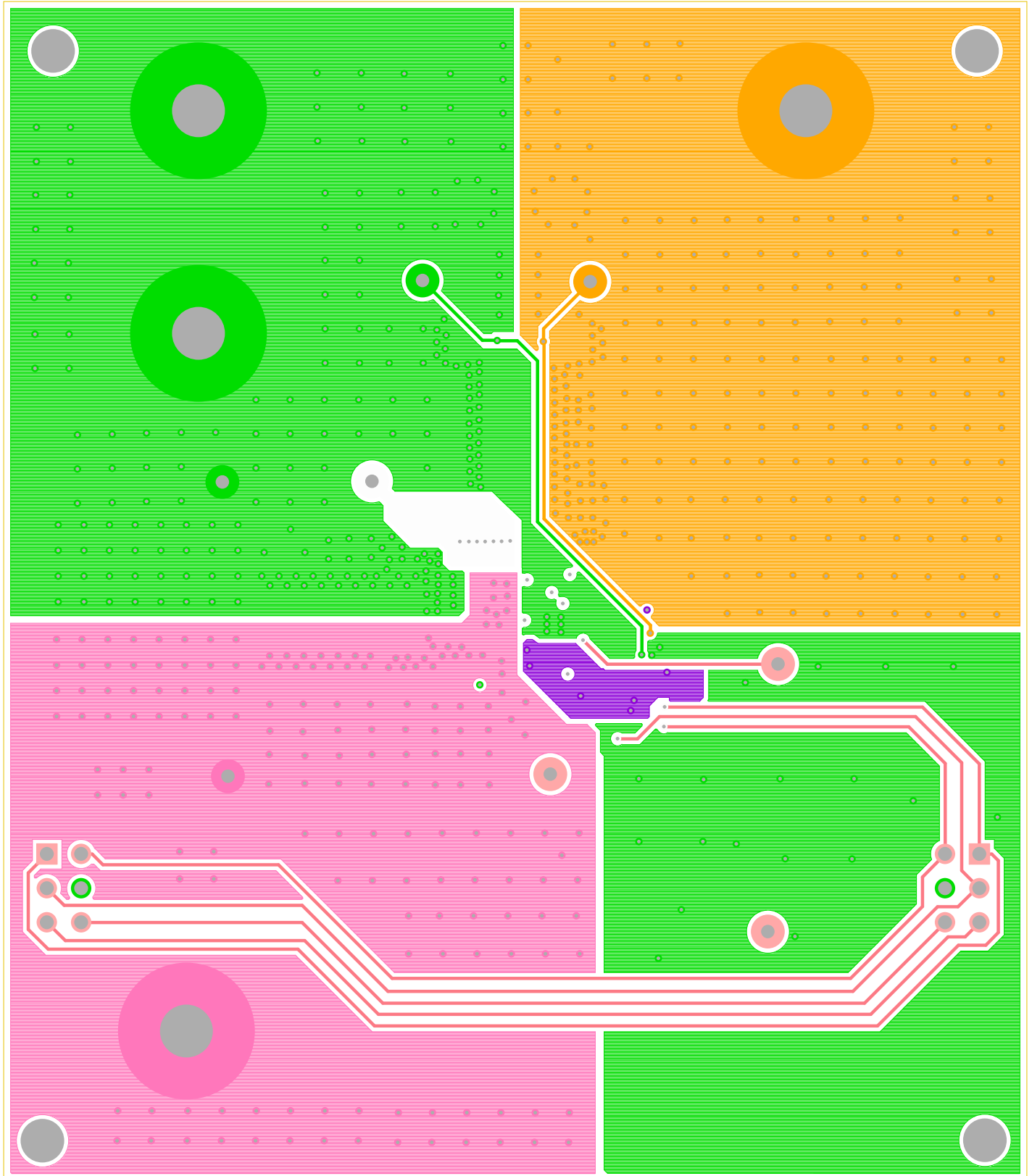


LAYER 2

RENESAS CORPORATION

12-05-2018

ISL8280MEVAL1Z Rev.A

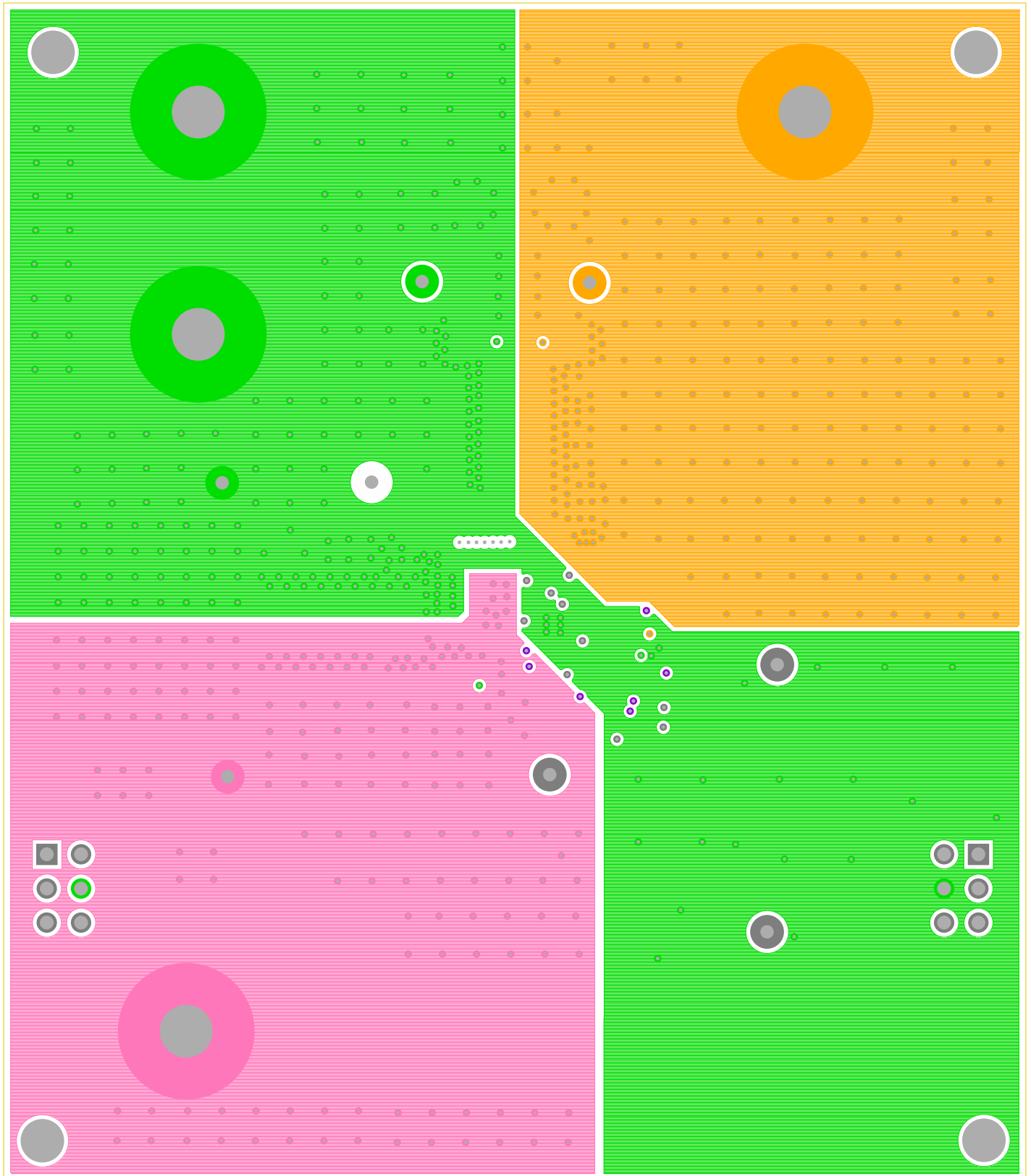


LAYER 3

RENESAS CORPORATION

12-05-2018

ISL8280MEVAL1Z Rev.A



LAYER 4

RENESAS CORPORATION

12-05-2018

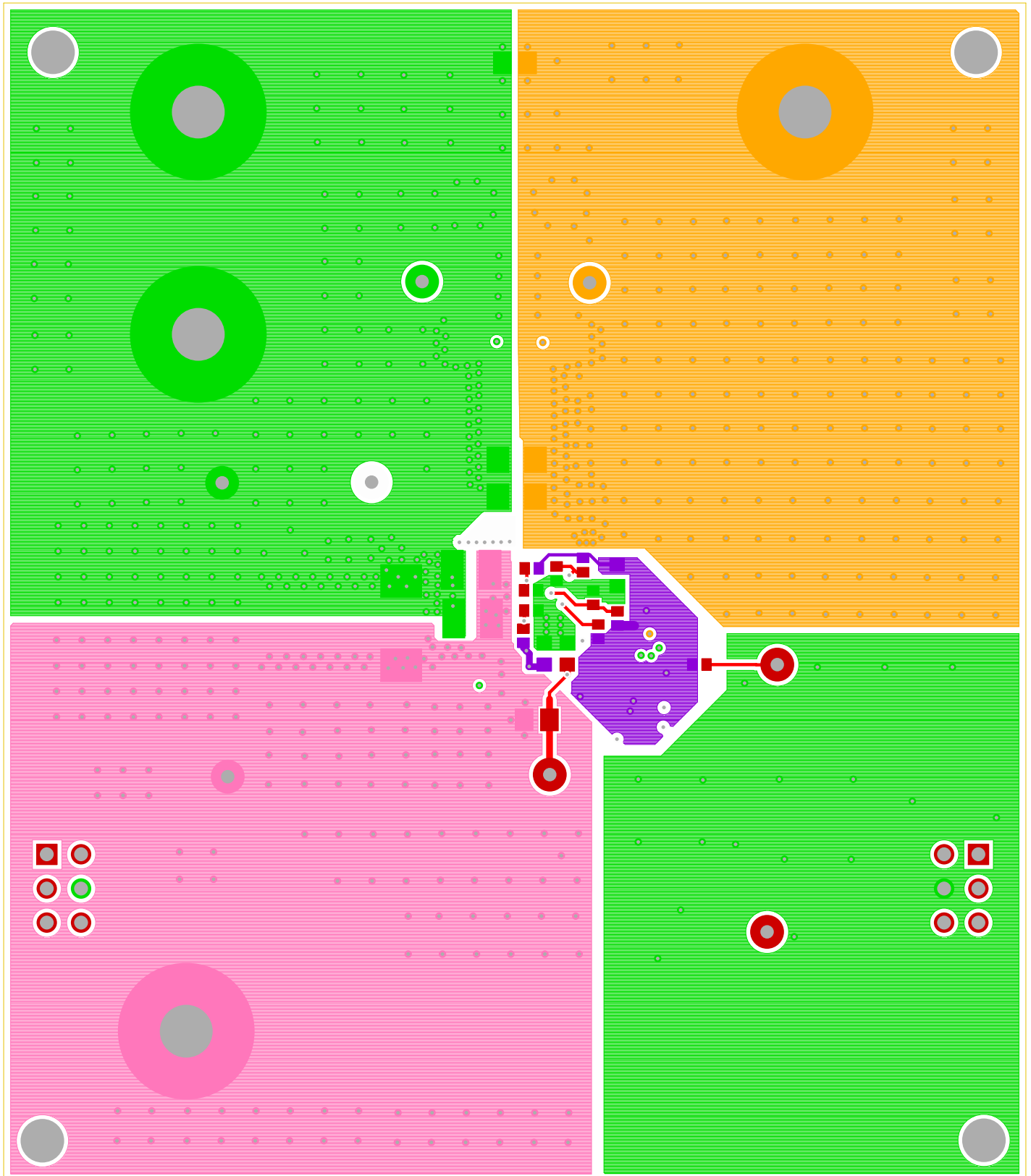
This image displays a highly detailed and colorful abstract pattern on a black background. The design is symmetrical and features a variety of geometric elements:

- Large Circles:** Several large circles are prominent, including a large red circle in the upper left, a large blue circle in the upper right, and a large yellow circle in the lower left. These circles have smaller, solid-colored circles inside them.
- Smaller Circles and Dots:** The pattern is filled with numerous smaller circles and dots in white, black, red, blue, and yellow. Some of these are arranged in clusters or lines.
- Geometric Shapes:** In addition to circles, there are smaller squares and rectangles scattered throughout the design.
- Colorful Clusters:** There are distinct clusters of dots in red, blue, and yellow, often forming irregular shapes.
- Symmetry:** The overall composition is highly symmetrical, with elements mirrored across the vertical and horizontal axes.

The pattern is intricate and visually striking, combining a wide range of colors and geometric forms to create a complex, balanced design.

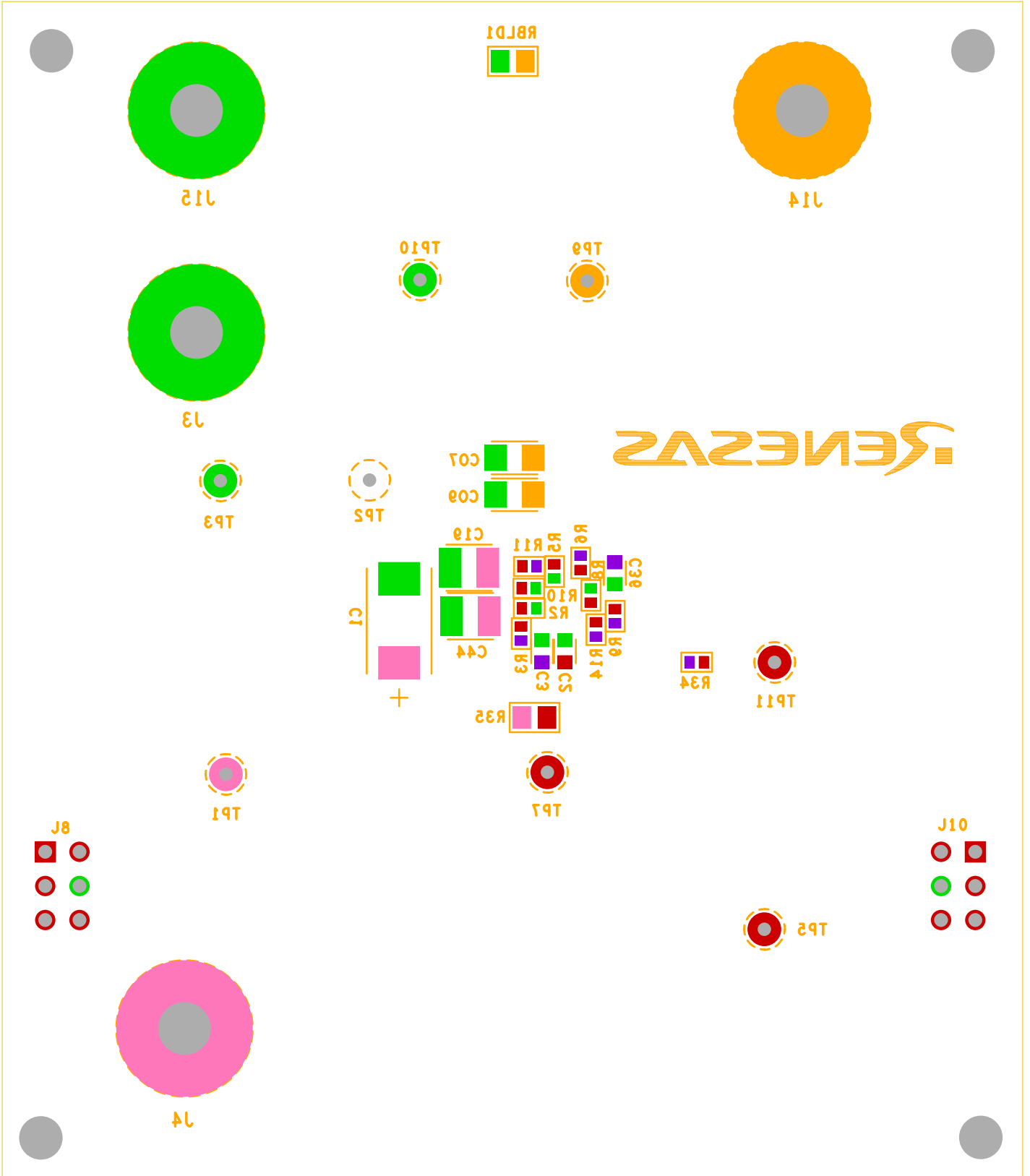
LAYER 5
RENESAS CORPORATION
12-05-2018

ISL8280MEVAL1Z Rev.A



BOTTOM LAYER SOLDER SIDE
RENESAS CORPORATION
12-05-2018

ISL8280MEVAL1Z Rev.A

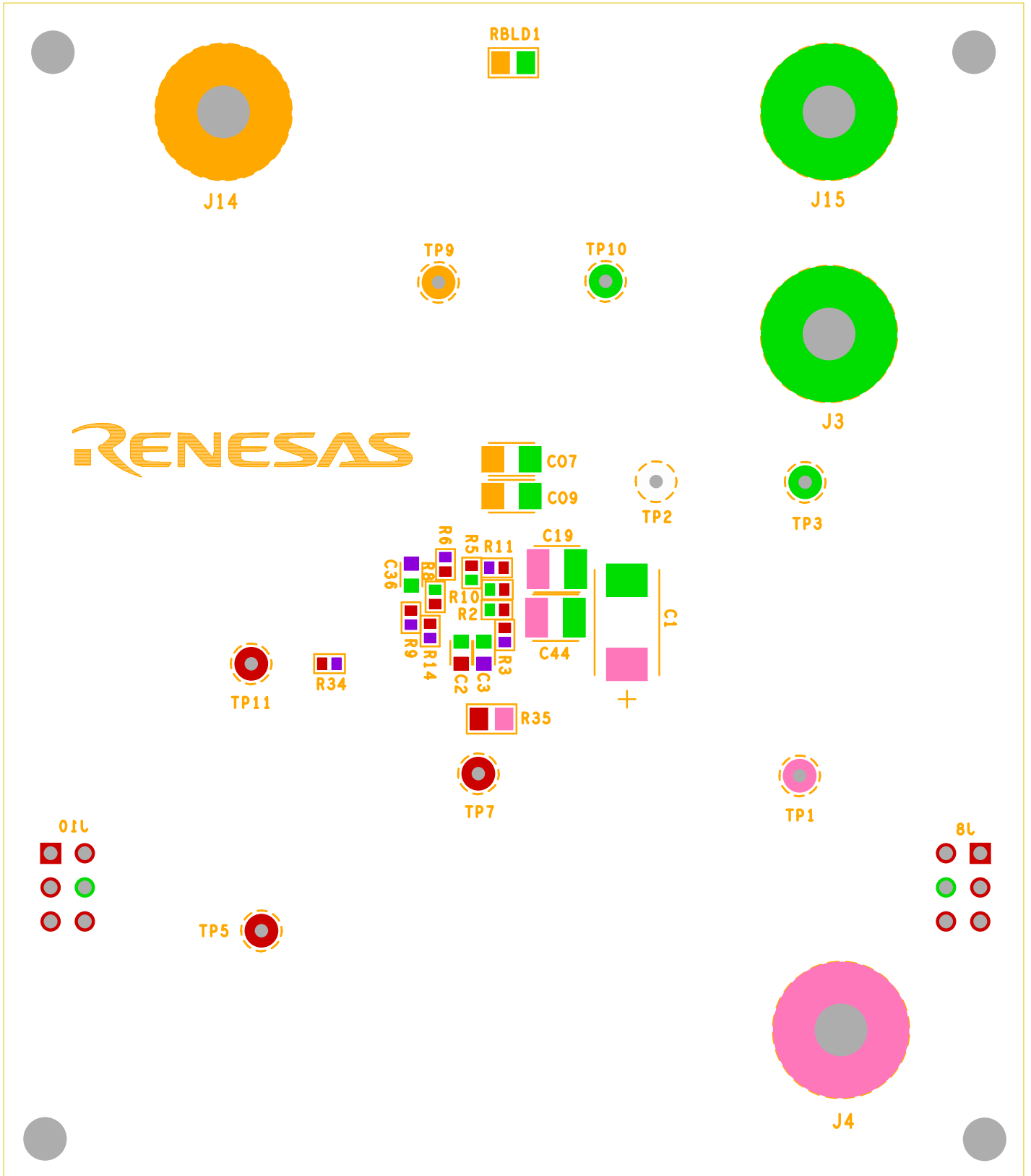


SILK SCREEN BOTTOM

RENESAS CORPORATION

12-05-2018

ISL8580MEVAL1Z Rev.A



SILK SCREEN BOTTOM

RENEASIS CORPORATION

1S-02-2018

