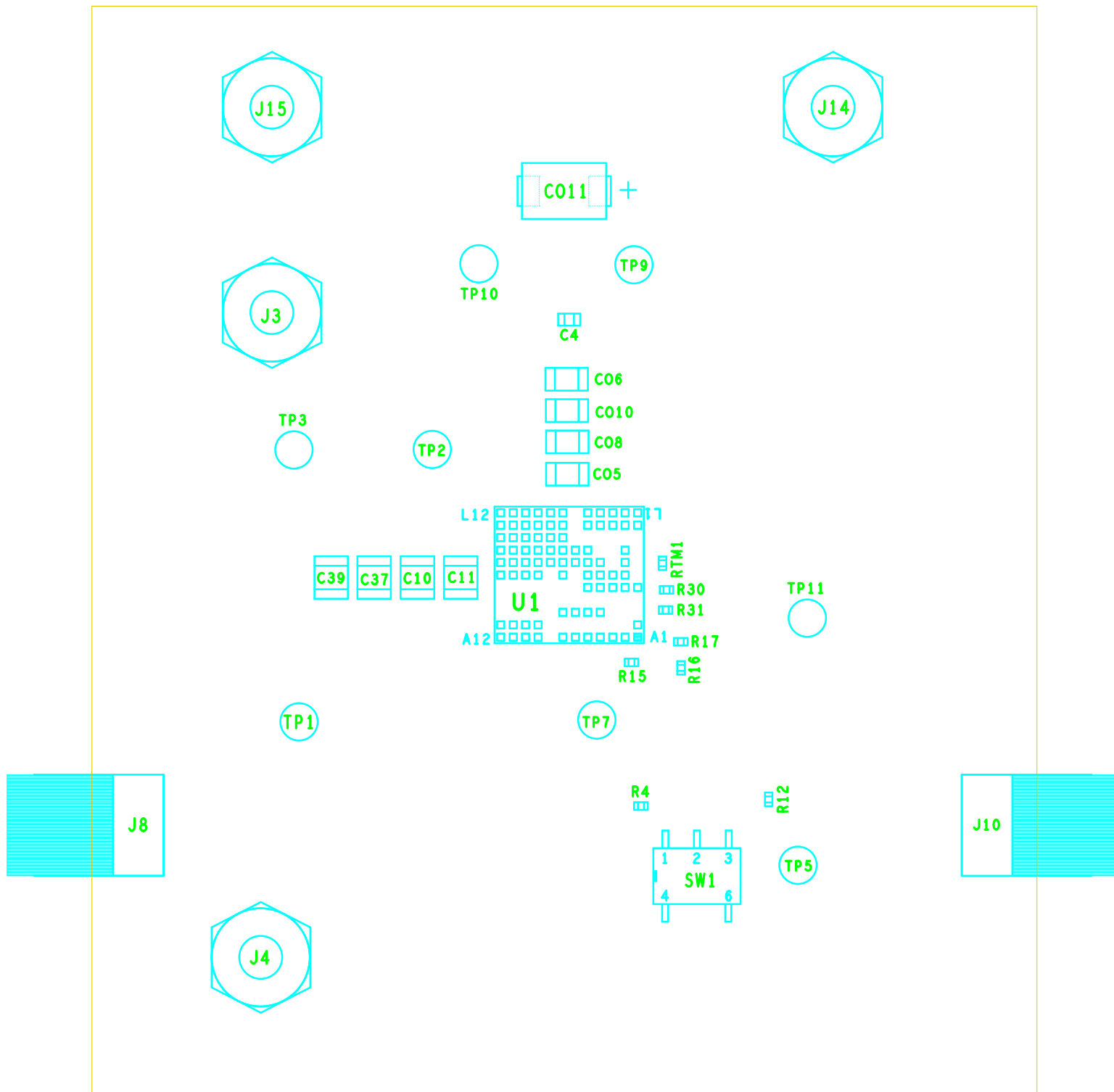


ISL8282MEVAL1Z Rev.A

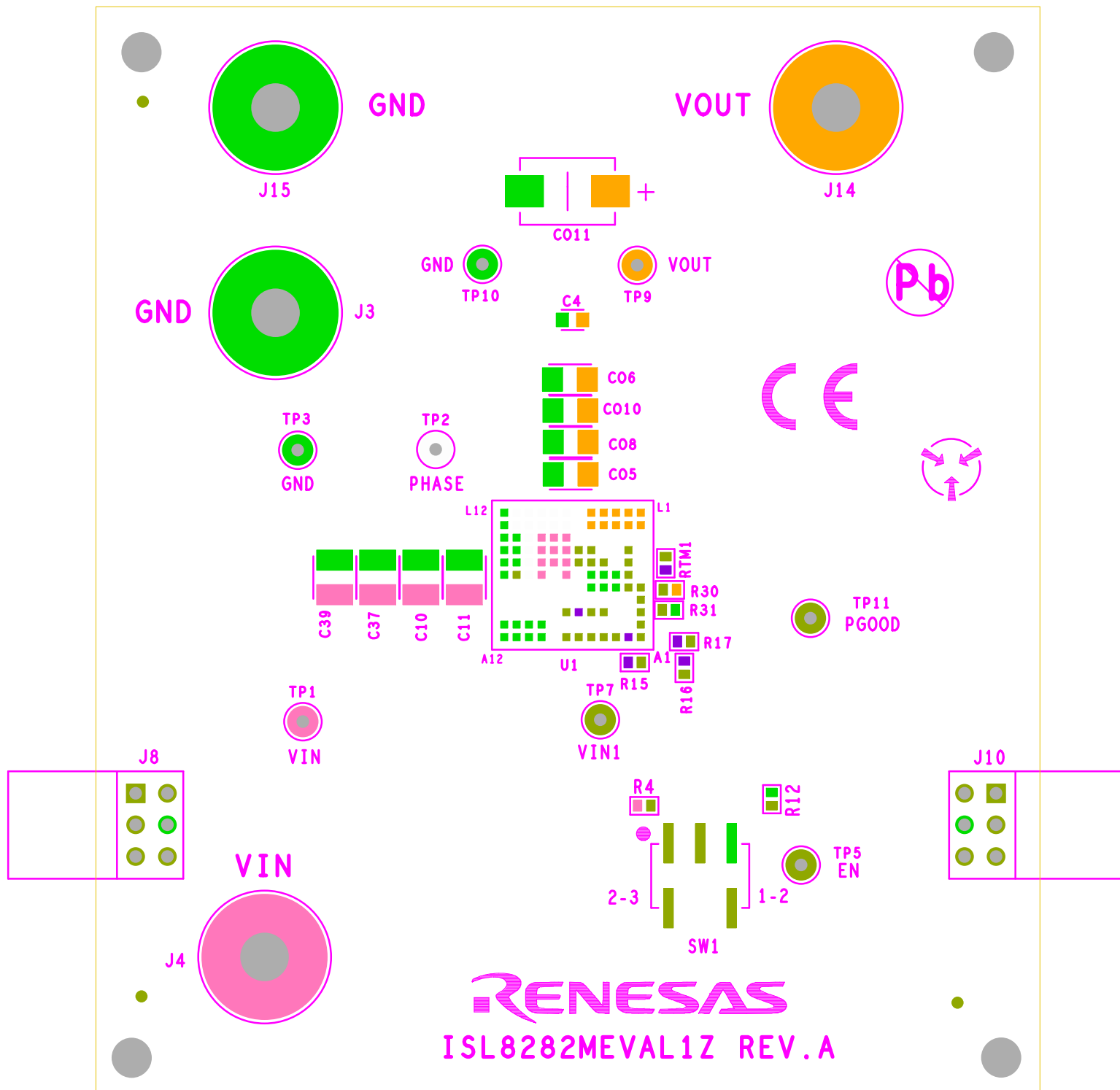


ASSEMBLY TOP

RENESAS CORPORATION

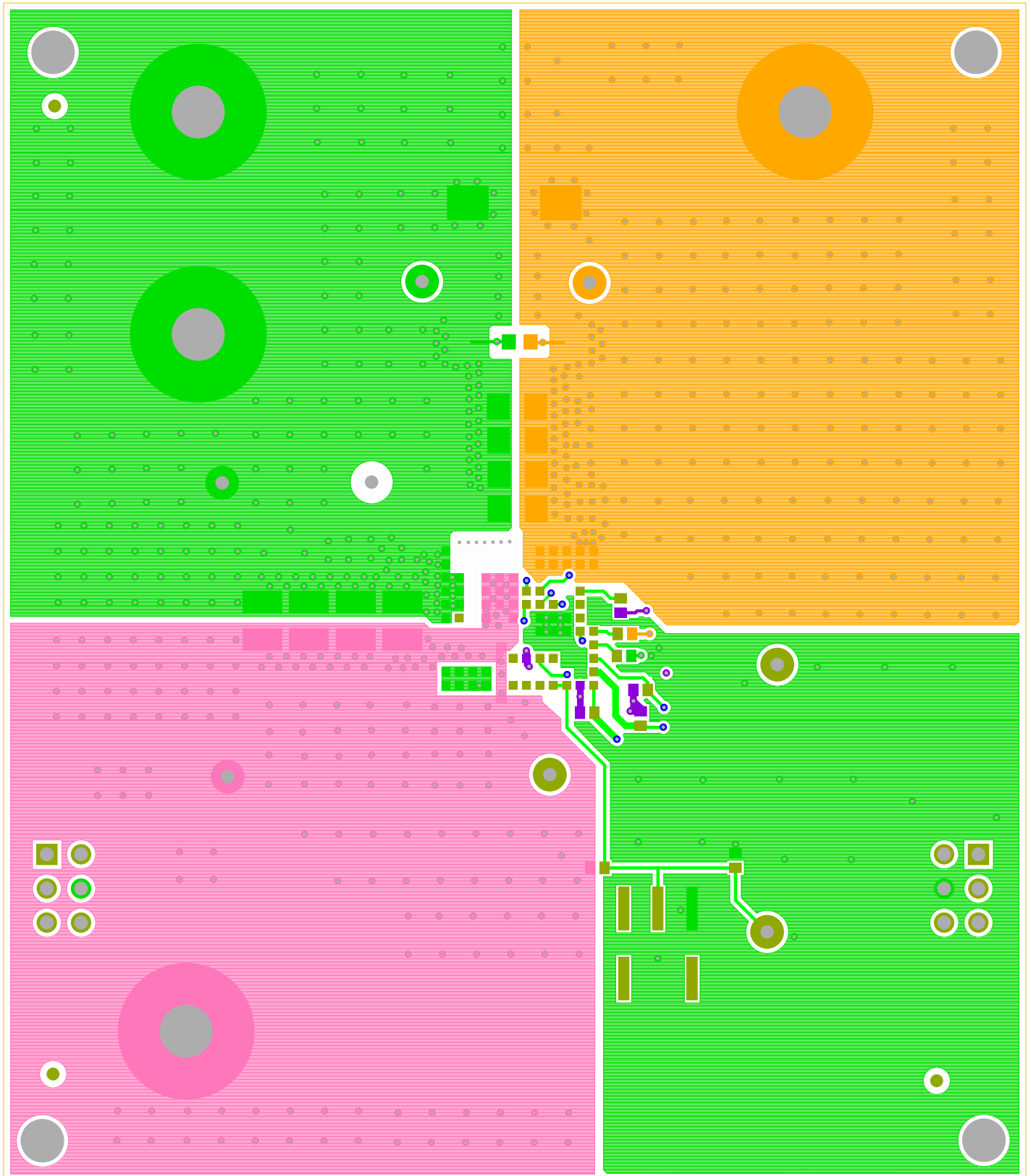
10-16-2018

ISL8282MEVAL1Z Rev.A



SILK SCREEN TOP
 RENESAS CORPORATION
 10-16-2018

ISL8282MEVAL1Z Rev.A

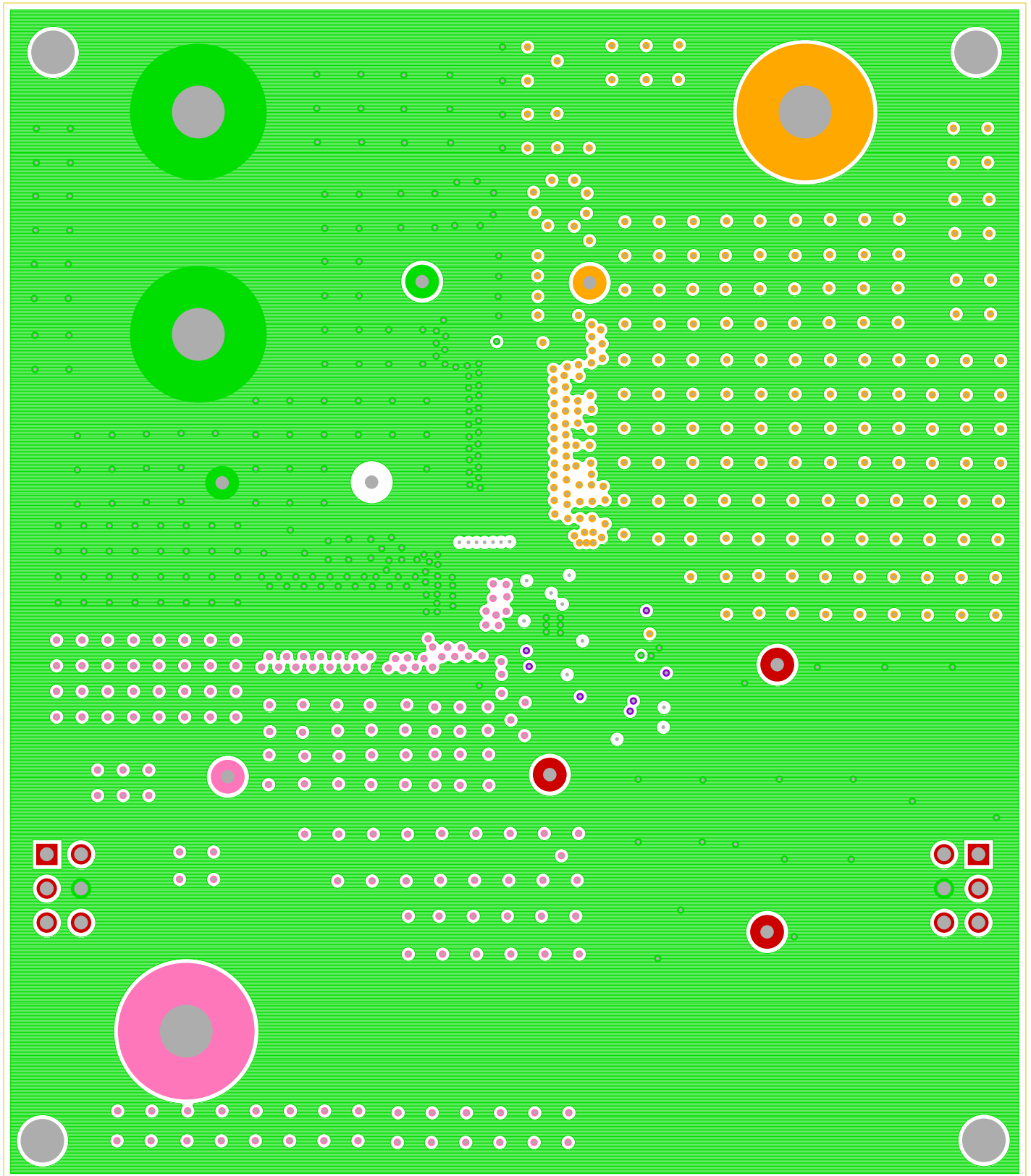


TOP LAYER COMPONENT SIDE

RENESAS CORPORATION

10-16-2018

ISL8282MEVAL1Z Rev.A

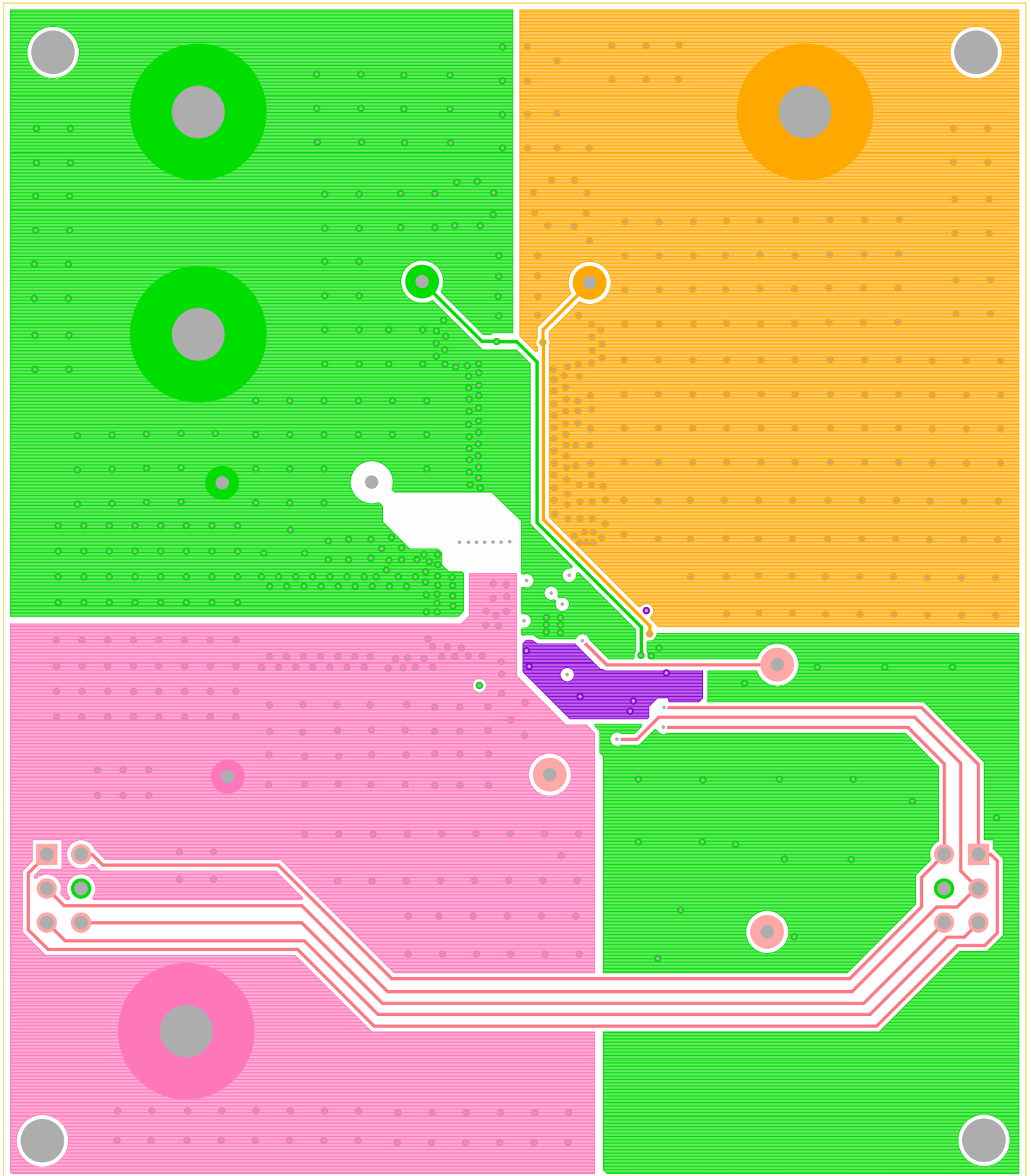


LAYER 2

RENESAS CORPORATION

10-16-2018

ISL8282MEVAL1Z Rev.A

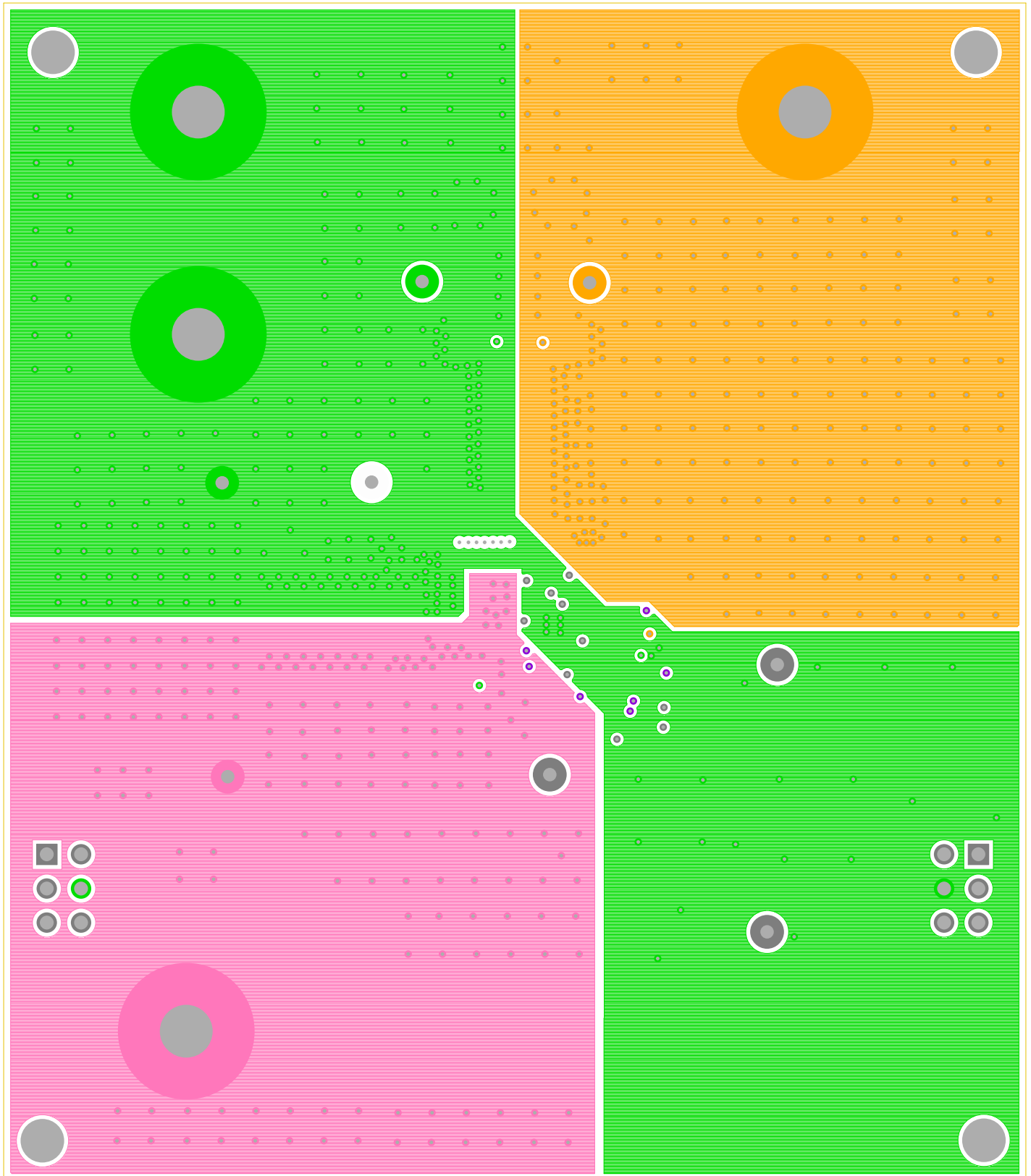


LAYER 3

RENESAS CORPORATION

10-16-2018

ISL8282MEVAL1Z Rev.A

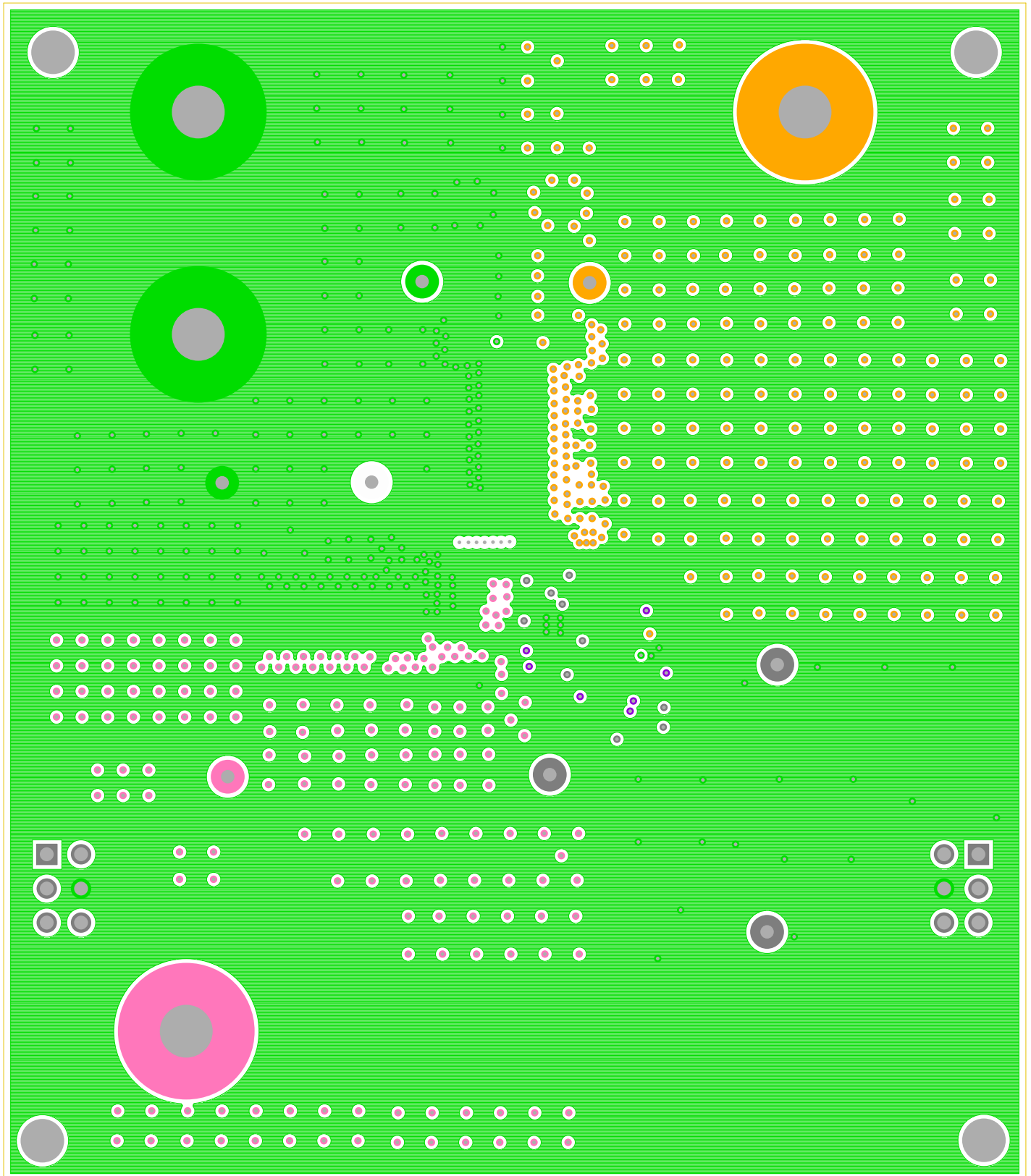


LAYER 4

RENESAS CORPORATION

10-16-2018

ISL8282MEVAL1Z Rev.A

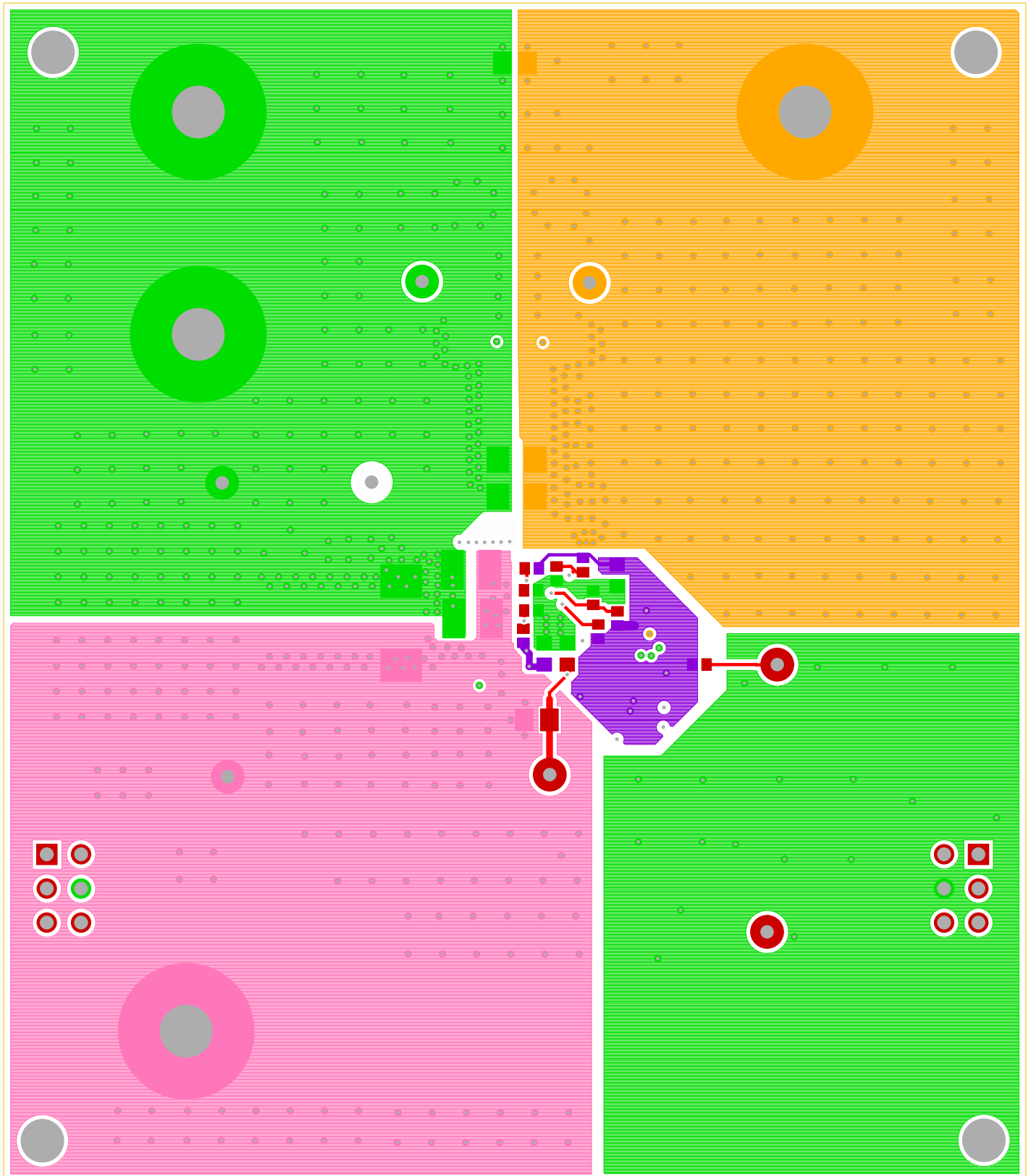


LAYER 5

RENESAS CORPORATION

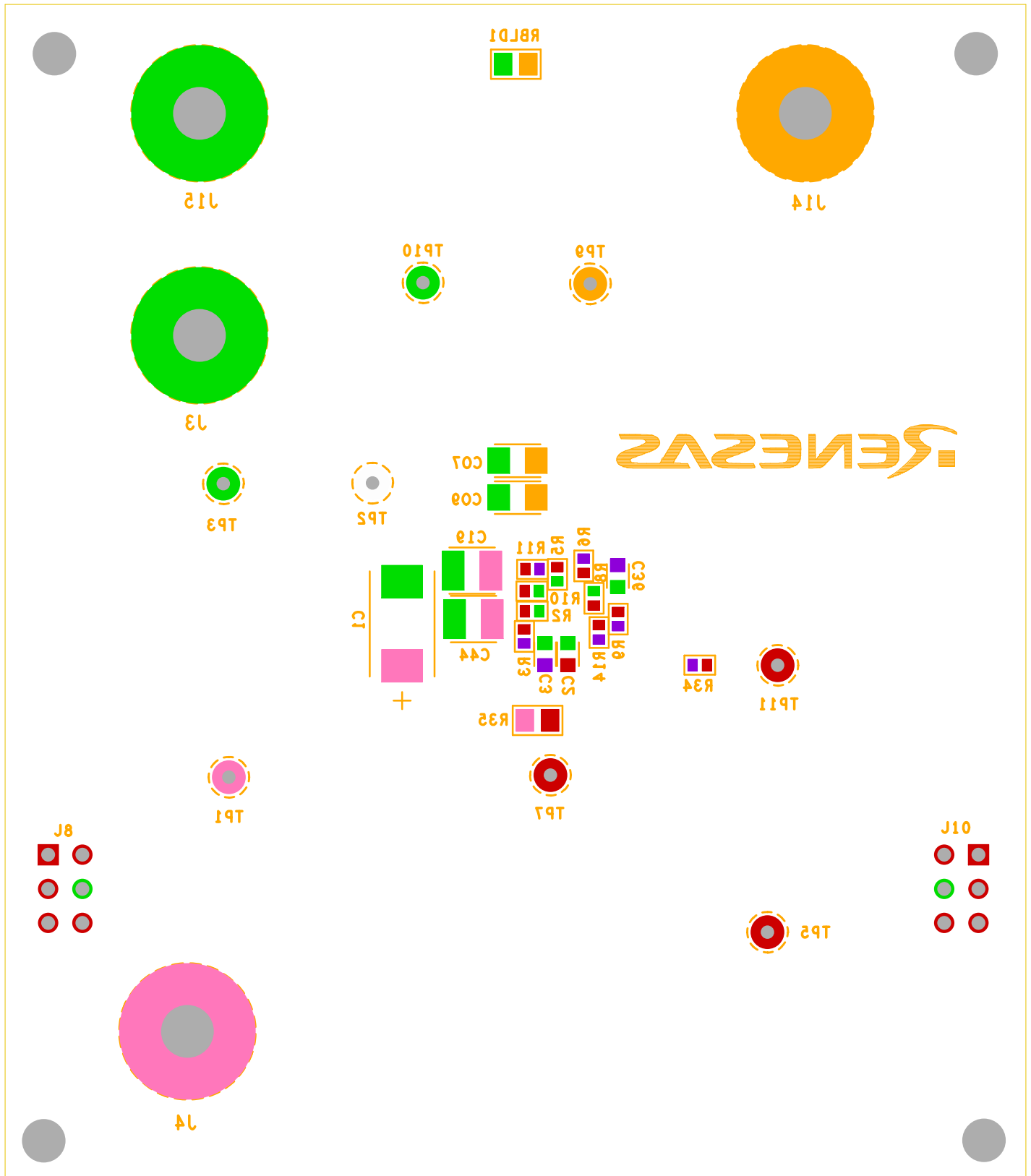
10-16-2018

ISL8282MEVAL1Z Rev.A



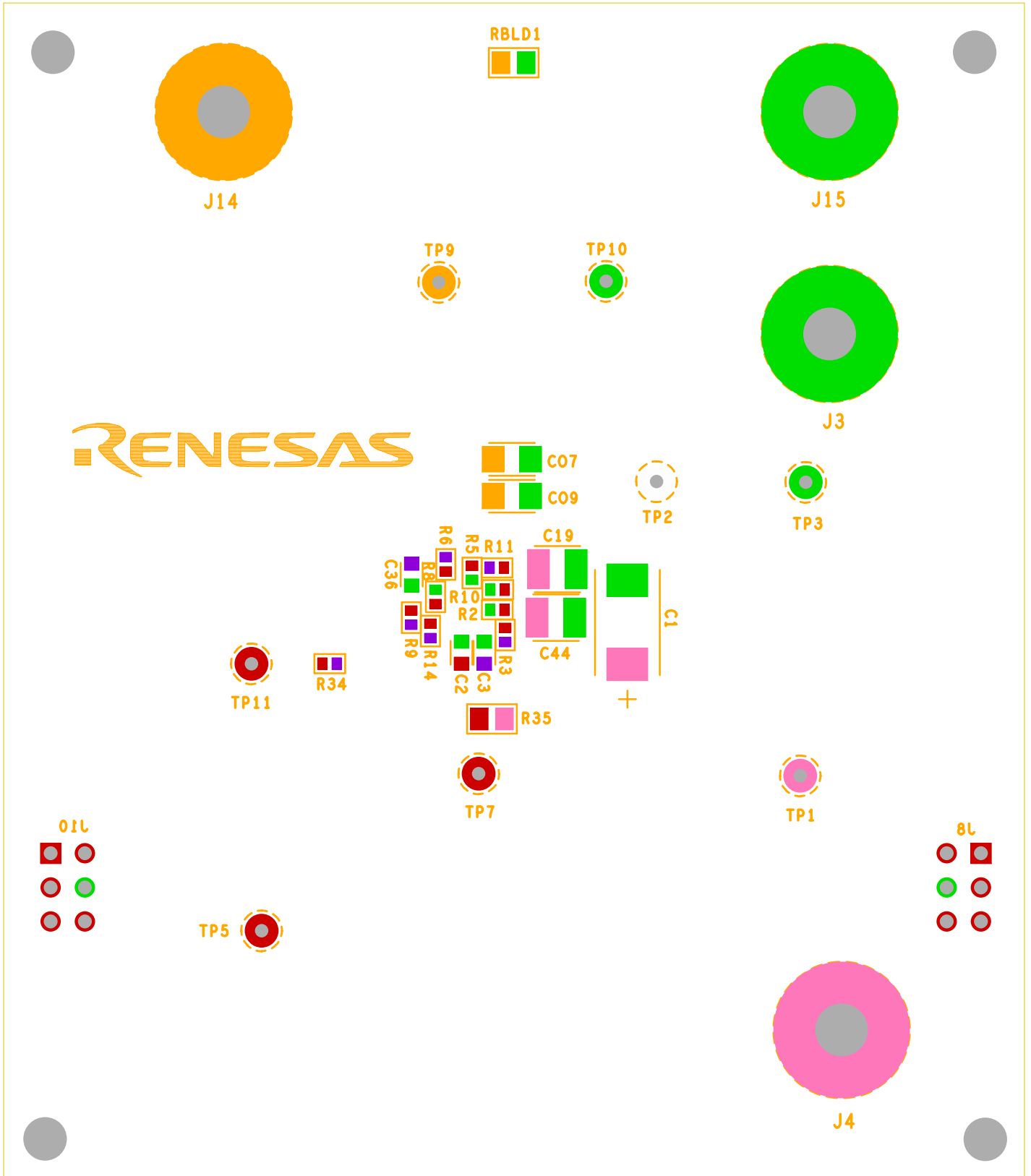
BOTTOM LAYER SOLDER SIDE
RENESAS CORPORATION
10-16-2018

ISL8282MEVAL1Z Rev.A



SILK SCREEN BOTTOM
RENESAS CORPORATION
10-16-2018

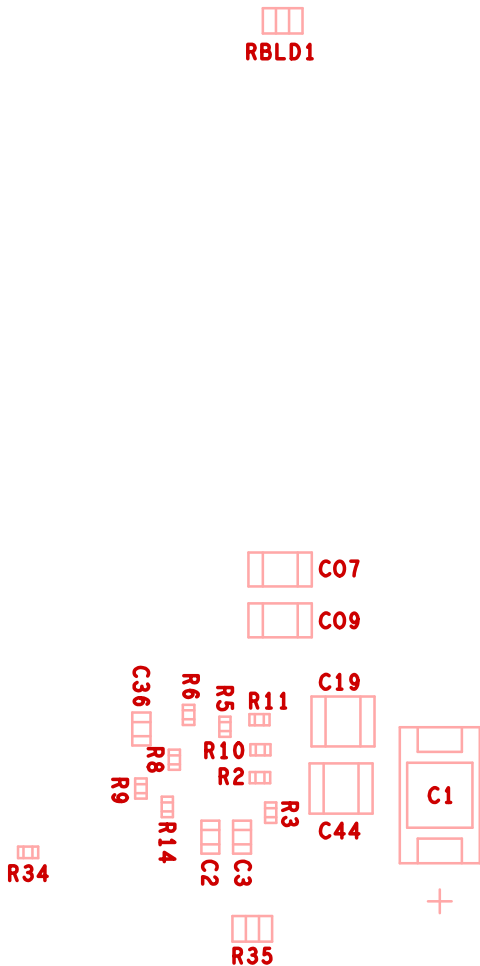
ISL8585MEVAL1Z Rev.A



SILK SCREEN BOTTOM

RENESAS CORPORATION

10-16-2018



ASSEMBLY BOTTOM

RENEAS CORPORATION

10-16-2018

REVISIONS			
REV	DESCRIPTION	DATE	APPROVED

DRILL CHART: TOP to BOTTOM			
ALL UNITS ARE IN MILS			
FIGURE	SIZE	PLATED	QTY
⊙	11.0	PLATED	619
⊠	12.0	PLATED	51
⊙	40.0	PLATED	8
△	41.0	PLATED	12
⊗	155.0	PLATED	4
⊗	128.0	NON-PLATED	4

NOTES:

1. THIS BOARD IS RoHS COMPLIANT.
2. PRINTED WIRING BOARD DESIGN AND ACCEPTANCE CRITERIA SHALL BE IAW WITH THE REQUIREMENTS OF IPC-D-275 AND IPC-A-600.
3. MATERIAL: FR4 (RoHS COMPLIANT), 2 OZ COPPER.
4. APPLY SOLDER MASK. BOTH SIDES (VIAS ARE TENTED), IAW IPC-SM-840. CLASS 2 (LPI) (BLUE MASK).
5. IMMERSION GOLD FINISH.
6. UNLESS OTHERWISE SPECIFIED ALL HOLE DIAMETERS ARE AFTER PLATING.
7. APPLY SILKSCREEN USING WHITE NON-CONDUCTIVE EPOXY BASED INK.
8. PWB MUST BE 100% ELECTRICALLY TESTED FOR SHORTS AND CONTINUITY. USE NETLIST PROVIDED ISL8282MEVAL1ZA_IPC.IPC IAW IPC-D-356.
9. MARK DATE CODE AND MANUFACTURES IDENTIFICATION ON SOLDER SIDE PER IPC-6011 AND IPC-6012.
10. TOLERANCE ON ALL DRILL HOLES SHALL BE IAW IPC-D-2221 & 2222 UNLESS OTHERWISE SPECIFIED.
11. ALL VIA HOLES 12 MILS IN SIZE (VIA22C12P_FILLED) ARE TO BE FILLED WITH NON-CONDUCTIVE THERMAL EPOXY AND CAPPED.

[illegible]