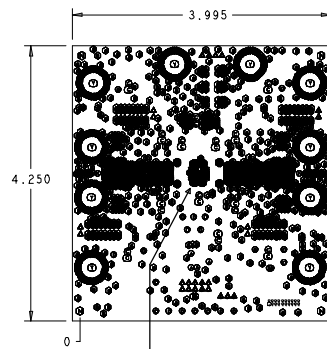


NOTES: UNLESS OTHERWISE SPECIFIED.

- BOARD IS VIEWED FROM LAYER 1 (PRIMARY SIDE). TOTAL CONDUCTOR LAYERS ARE 6.
- THIS DRAWING ALSO EXISTS ON ELECTRONIC MEDIA.
- MANUFACTURE/FABRICATE TO MEET EU RoHS DIRECTIVE. ALL MATERIALS AND SOLDERMASK TO BE COMPLIANT TO EU RoHS DIRECTIVE 20002/95/EC LAMINATE AND RESIN MATERIAL PARAMETERS  
Tg > 170 C  
Td > 294 C
- FINISH:  
ELECTROLISS NICKEL/GOLD(ENIG)PLATING IS TO BE USED. 3-8 uin GOLD OVER 100uin NICKEL.
- SOLDERMASK SHALL BE LPI (RED) OVER BARE COPPER. 0.0005"-0.002" THICK, AND CONFORM TO THE LATEST REVISION OF IPC-SM-840.
- CONDUCTOR WIDTH AND SPACING:  
THE NOMINAL CONDUCTOR WIDTH AND SPACING ON FINISHED BOARD IS:  
WIDTH 0.006"  
SPACING 0.004"
- SILKSCREEN SHALL BE WHITE NONCONDUCTIVE EPOXY INK, AND SHALL NOT APPEAR ON ANY PADS OR MOUNTING HOLES.
- PRIOR TO BOARD FABRICATION, COMPARE GERBER DATA TO SUPPLIED IPC-D-356A NET LIST. REPORT ALL DISCREPANCIES.
- VIAS IN PADS MUST BE FILLED USING CONDUCTIVE EPOXY.



SURFACE OF THIS VIAS IN PADS FOR WLCSP MUST BE FLAT AFTER PLATING.  
COPPER FILLED OR PLATE SHUT & PLATE OVER.

| DRILL CHART: TOP to BOTTOM |       |            |      |
|----------------------------|-------|------------|------|
| ALL UNITS ARE IN MILS      |       |            |      |
| FIGURE                     | SIZE  | PLATED     | QTY  |
| •                          | 6.0   | PLATED     | 64   |
| ⊙                          | 8.0   | PLATED     | 78   |
| ⊙                          | 8.0   | PLATED     | 1650 |
| ⊙                          | 10.0  | PLATED     | 6    |
| •                          | 23.0  | PLATED     | 19   |
| •                          | 23.0  | PLATED     | 1    |
| ⊙                          | 40.0  | PLATED     | 21   |
| ⊙                          | 40.0  | PLATED     | 13   |
| ⊙                          | 40.0  | PLATED     | 13   |
| Δ                          | 40.0  | PLATED     | 21   |
| Δ                          | 41.0  | PLATED     | 4    |
| ⊙                          | 100.0 | PLATED     | 2    |
| ⊙                          | 255.0 | PLATED     | 10   |
| ⊙                          | 128.0 | NON-PLATED | 4    |

| DRILL CHART: TOP to L2 |      |        |     |
|------------------------|------|--------|-----|
| ALL UNITS ARE IN MILS  |      |        |     |
| FIGURE                 | SIZE | PLATED | QTY |
| •                      | 4.0  | PLATED | 50  |
| •                      | 6.0  | PLATED | 142 |

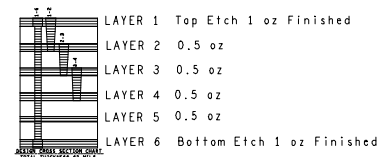
COPPER FILLED VIAS  
COPPER FILLED VIAS

| DRILL CHART: L2 to L3 |      |        |     |
|-----------------------|------|--------|-----|
| ALL UNITS ARE IN MILS |      |        |     |
| FIGURE                | SIZE | PLATED | QTY |
| •                     | 4.0  | PLATED | 43  |

COPPER FILLED VIAS

| DRILL CHART: L3 to L4 |      |        |     |
|-----------------------|------|--------|-----|
| ALL UNITS ARE IN MILS |      |        |     |
| FIGURE                | SIZE | PLATED | QTY |
| •                     | 6.0  | PLATED | 34  |

COPPER FILLED VIAS



|                                   |                         |   |
|-----------------------------------|-------------------------|---|
| Drawn By:<br>MARGARET SAVIEO      | Date Drawn:<br>04/18/18 | Engineer:<br>AJIT PAL                     |
| Released By:                      | Date Released:          | ISL91301B11-H-EV1Z<br>Fabrication Drawing |
| Updated By:                       | Date Updated:           |   |
| RENASAS                           | MAXX6<br>N/A            | DATE 15<br>N/A                            |
| FILENAME:<br>ISL91301B11-H-EV1Z_A | SHEET<br>1 of 1         | REV.<br>A                                 |