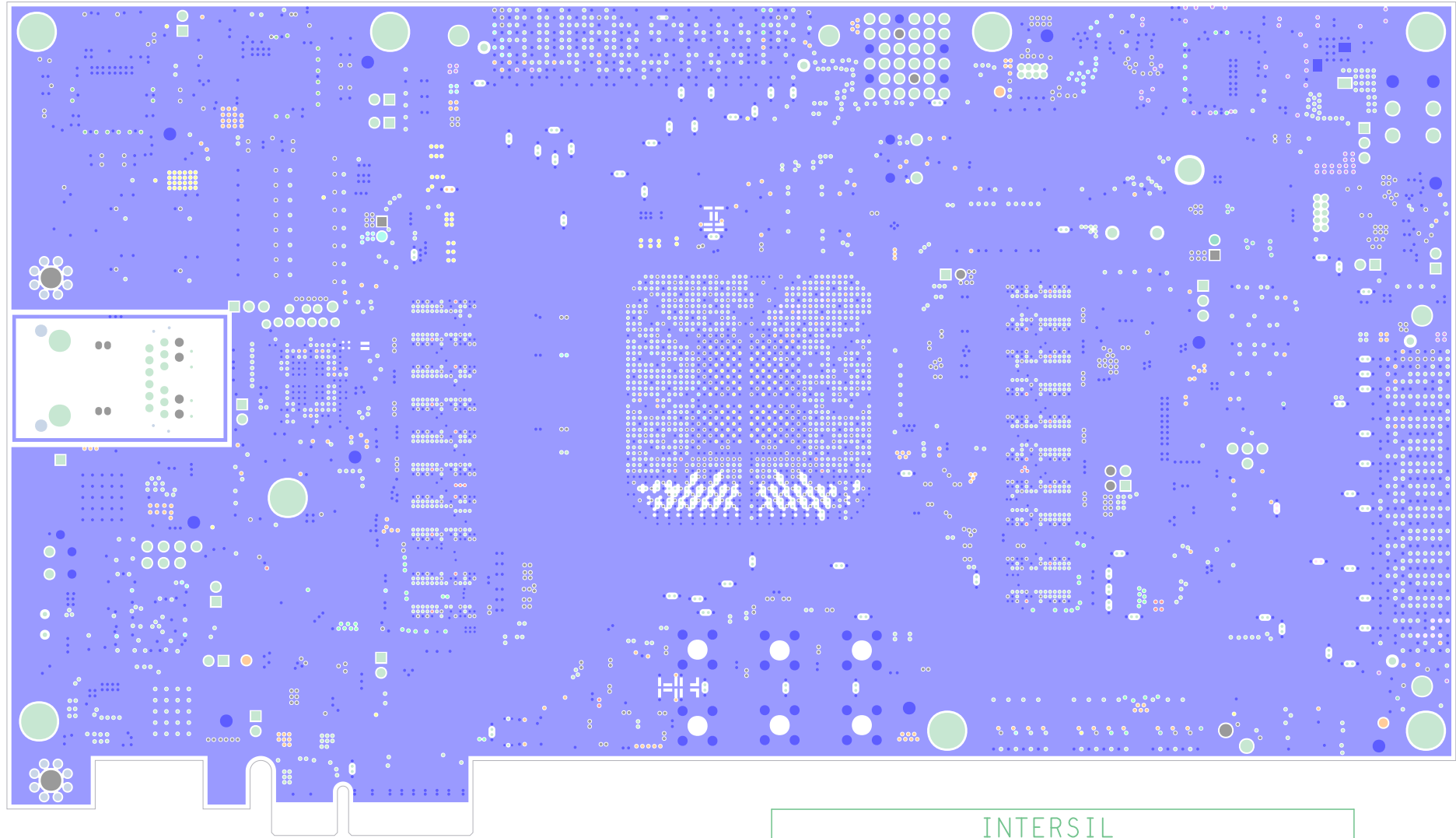




FILM LAYER: Layer1(TOP)





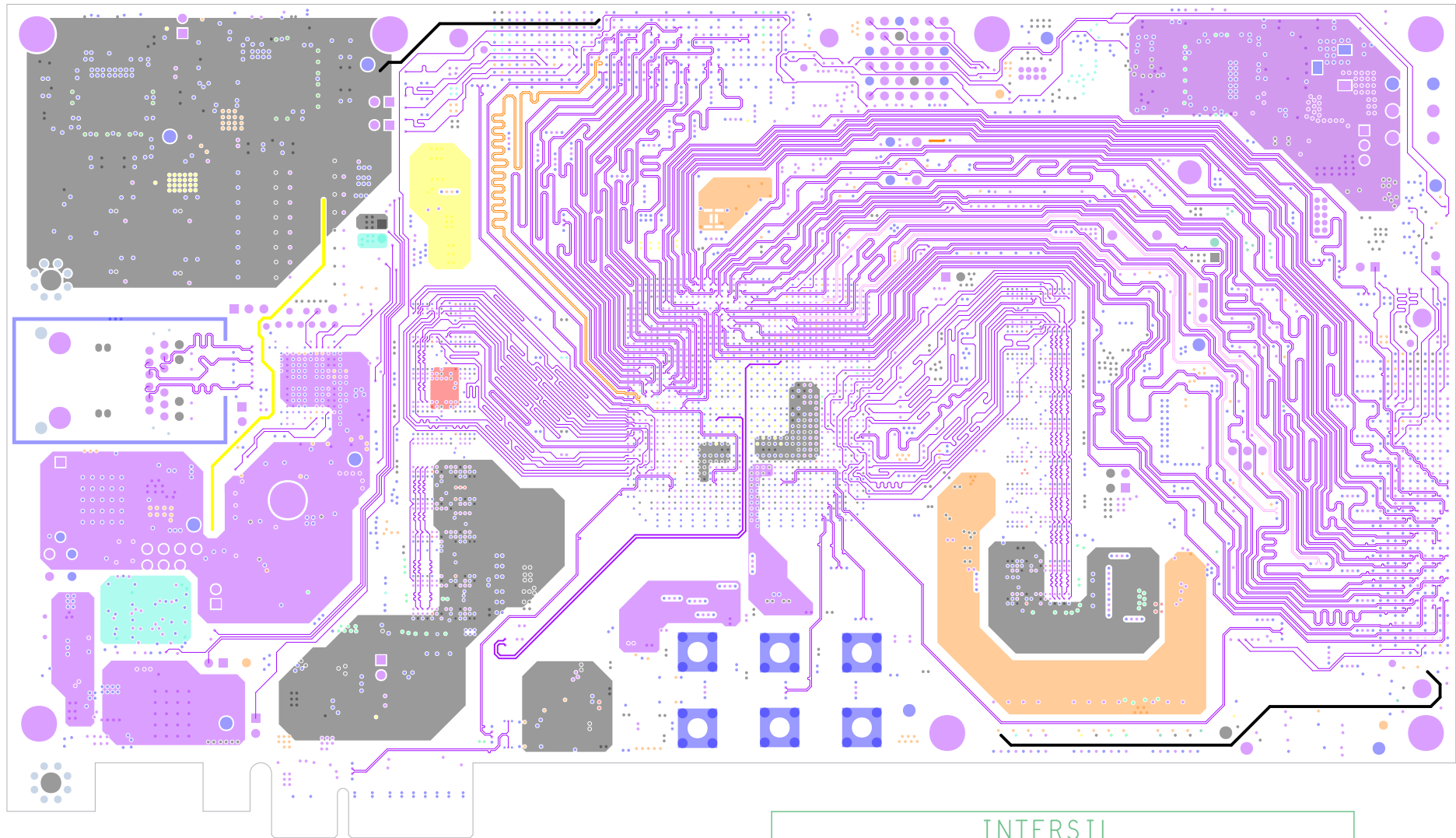
INTERSIL

DATE: 08/03/2020

NAME: ISLRGT4DEMO1Z

REV: B

FILM LAYER: Layer 2 (GND#1)



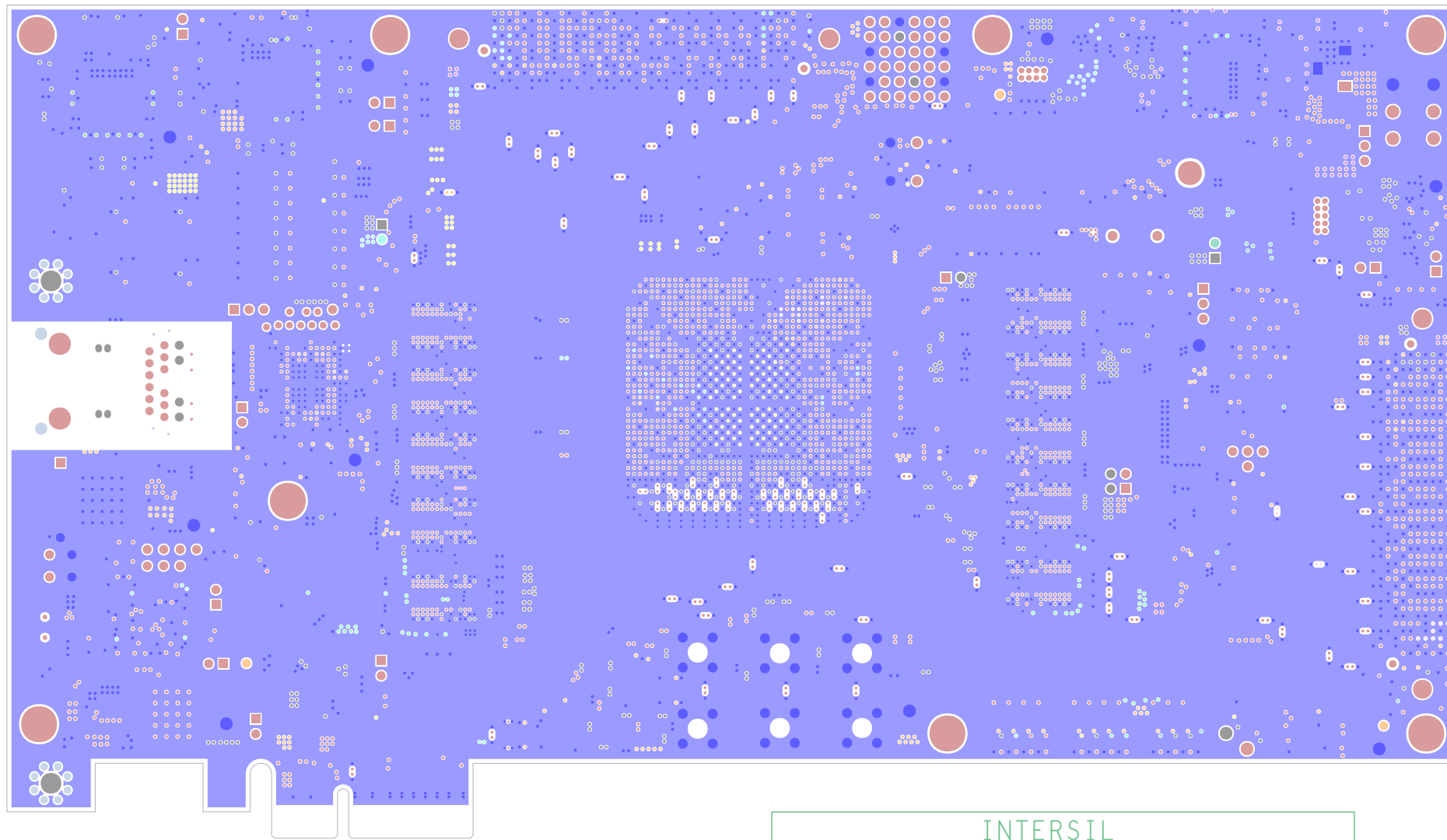
INTERSIL

DATE: 08/03/2020

NAME: ISLRGT4DEMO1Z

REV: B

FILM LAYER: Layer 3 (SIG#1)



INTERSIL

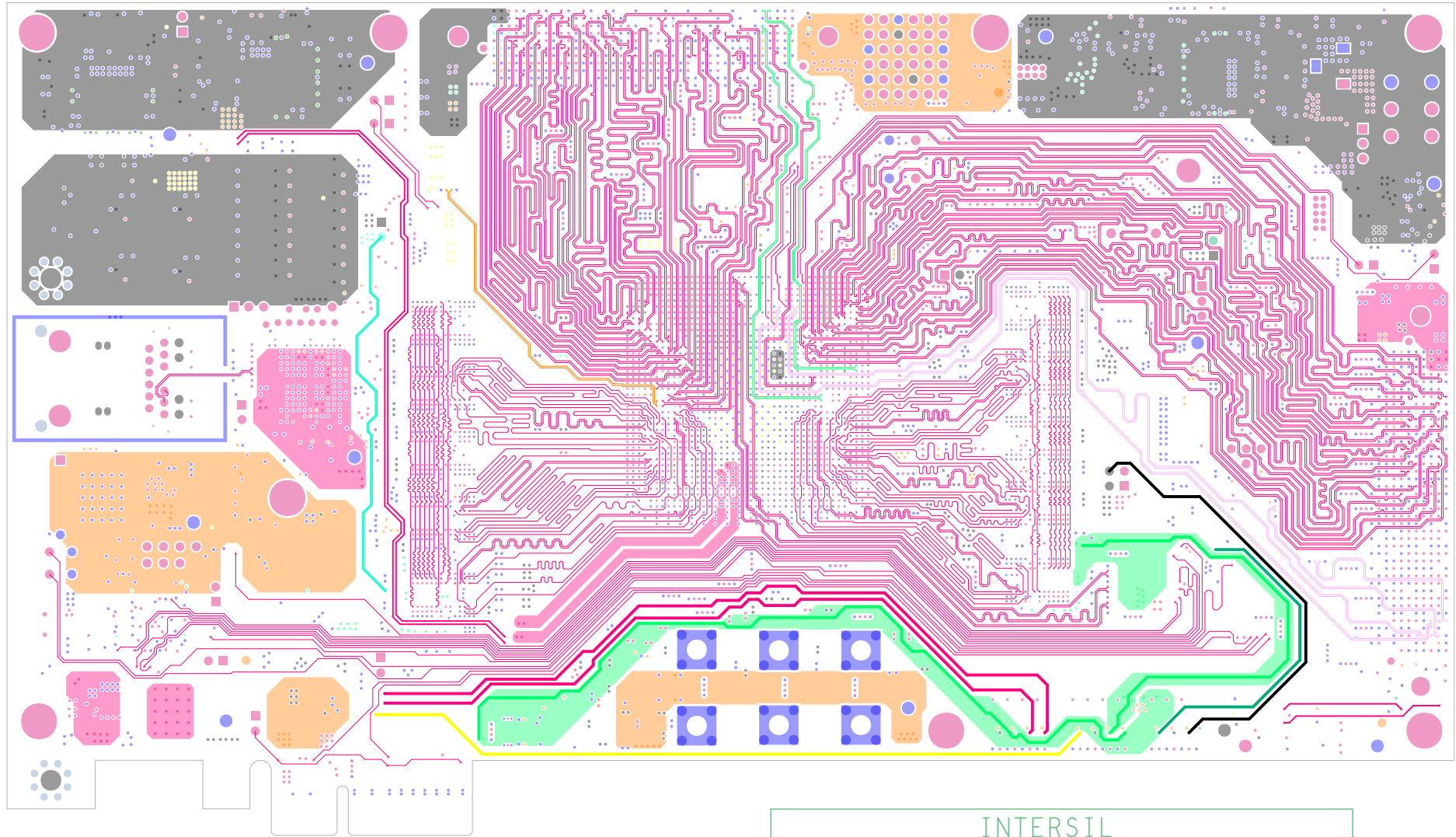
DATE: 08/03/2020

NAME: ISLRGT4DEMO1Z

REV: B

FILM LAYER: Layer 4 (GND#2)





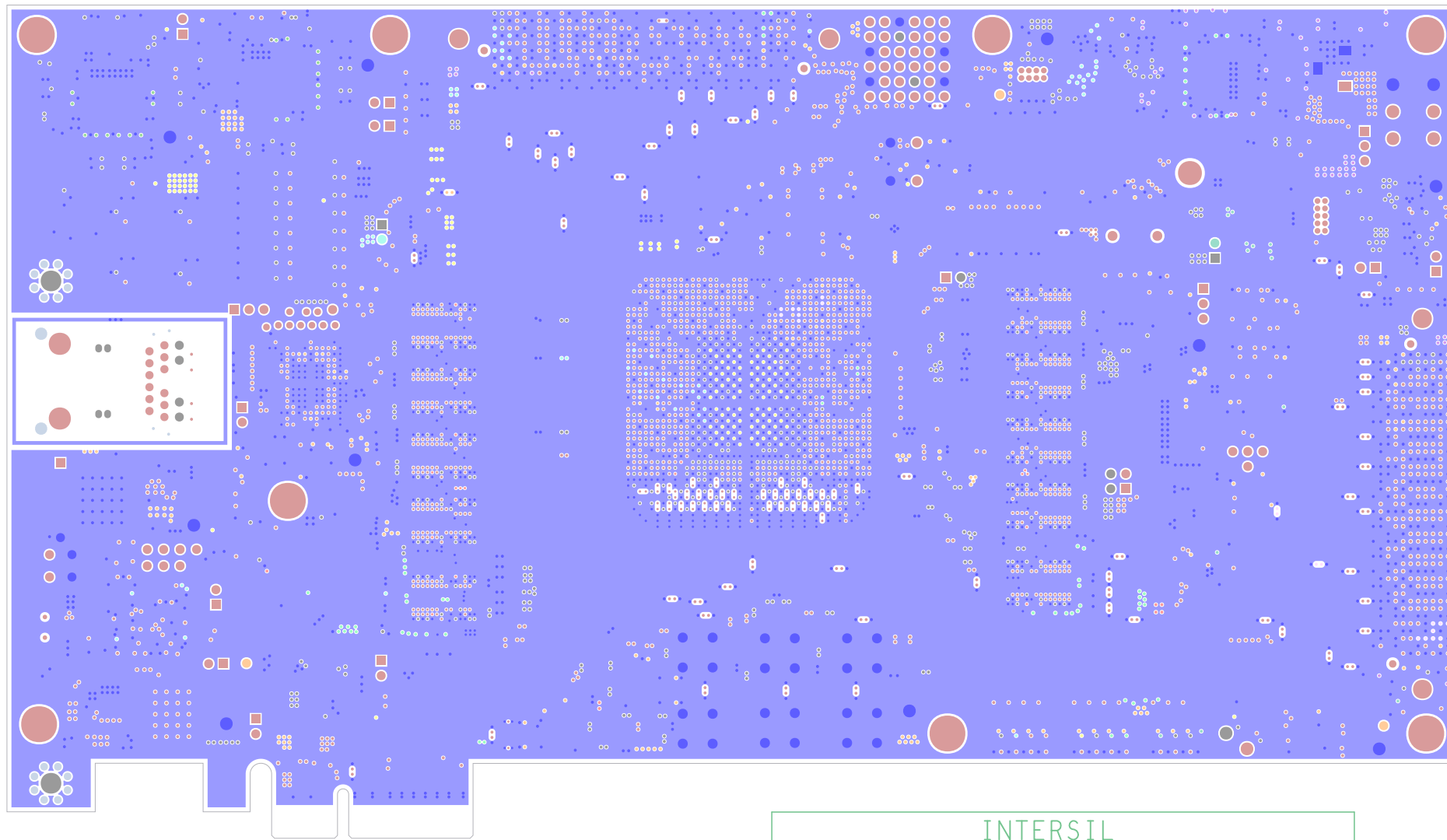
INTERSIL

DATE: 08/03/2020

NAME: ISLRGT4DEMO1Z

REV: B

FILM LAYER: Layer 5 (SIG#2)



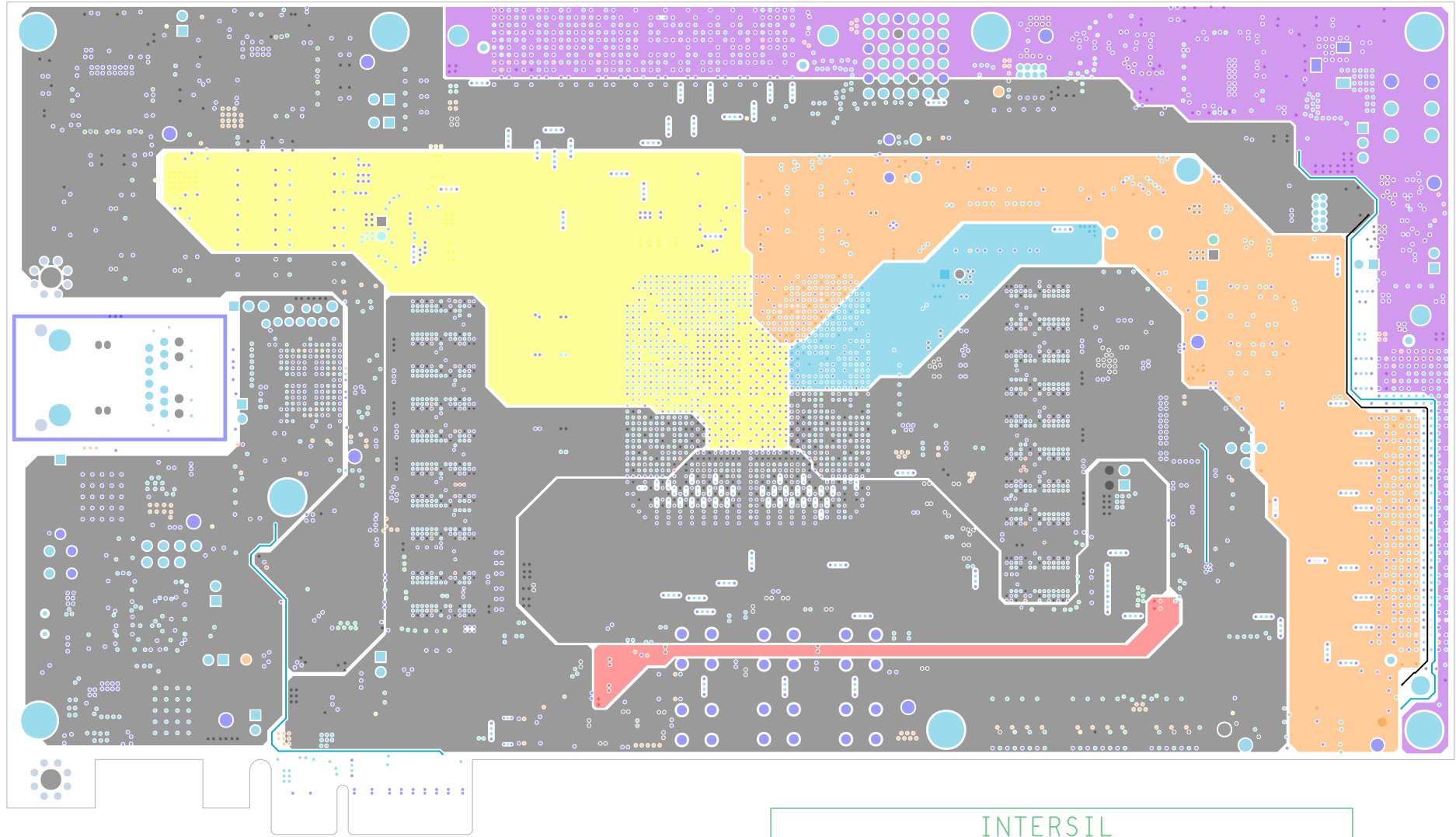
INTERSIL

DATE: 08/03/2020

NAME: ISLRGT4DEMO1Z

REV: B

FILM LAYER: Layer 6 (GND#3)



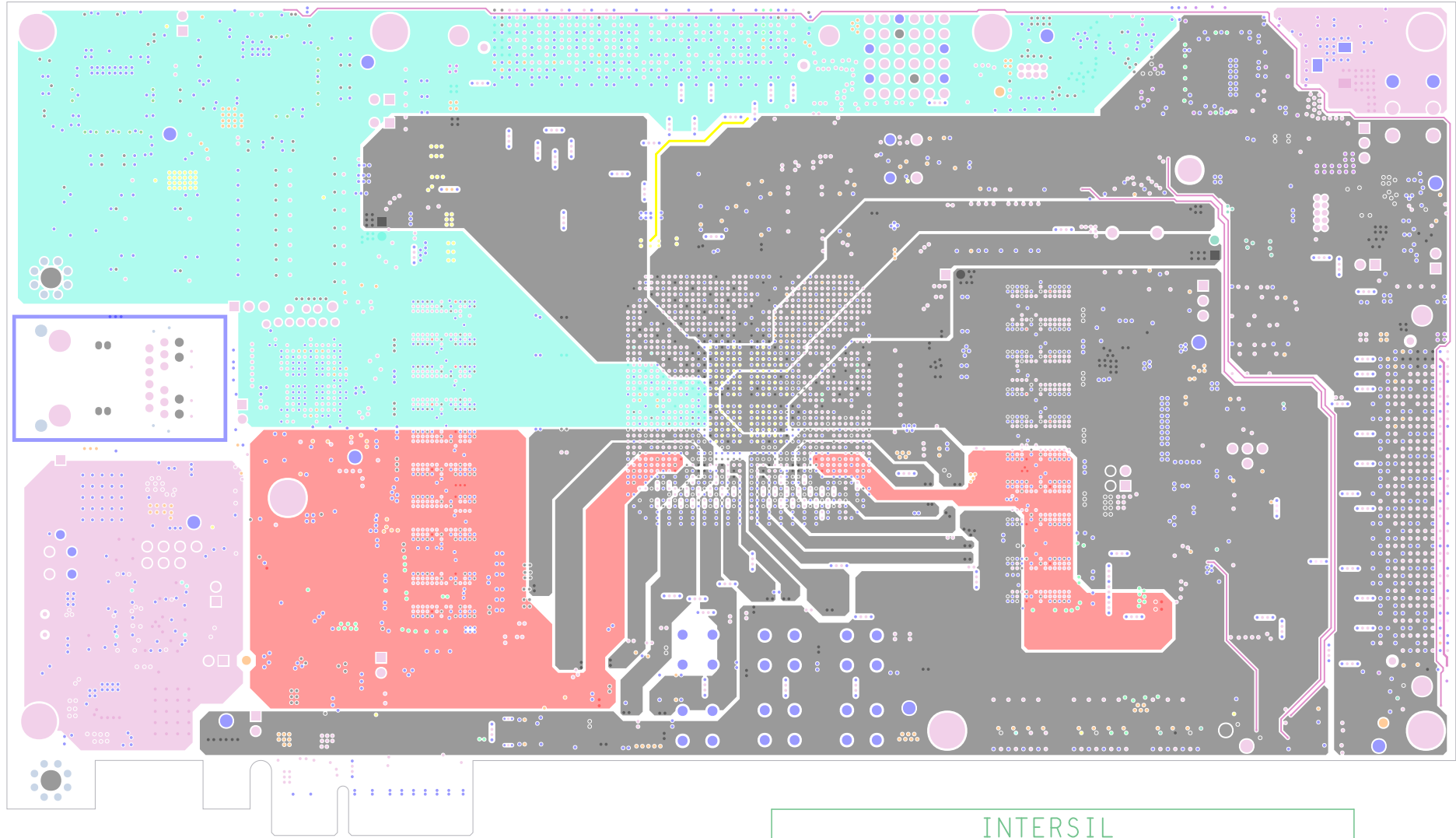
INTERSIL

DATE: 08/03/2020

NAME: ISLRGT4DEMO1Z

REV: B

FILM LAYER: Layer 7 (PWR#1)



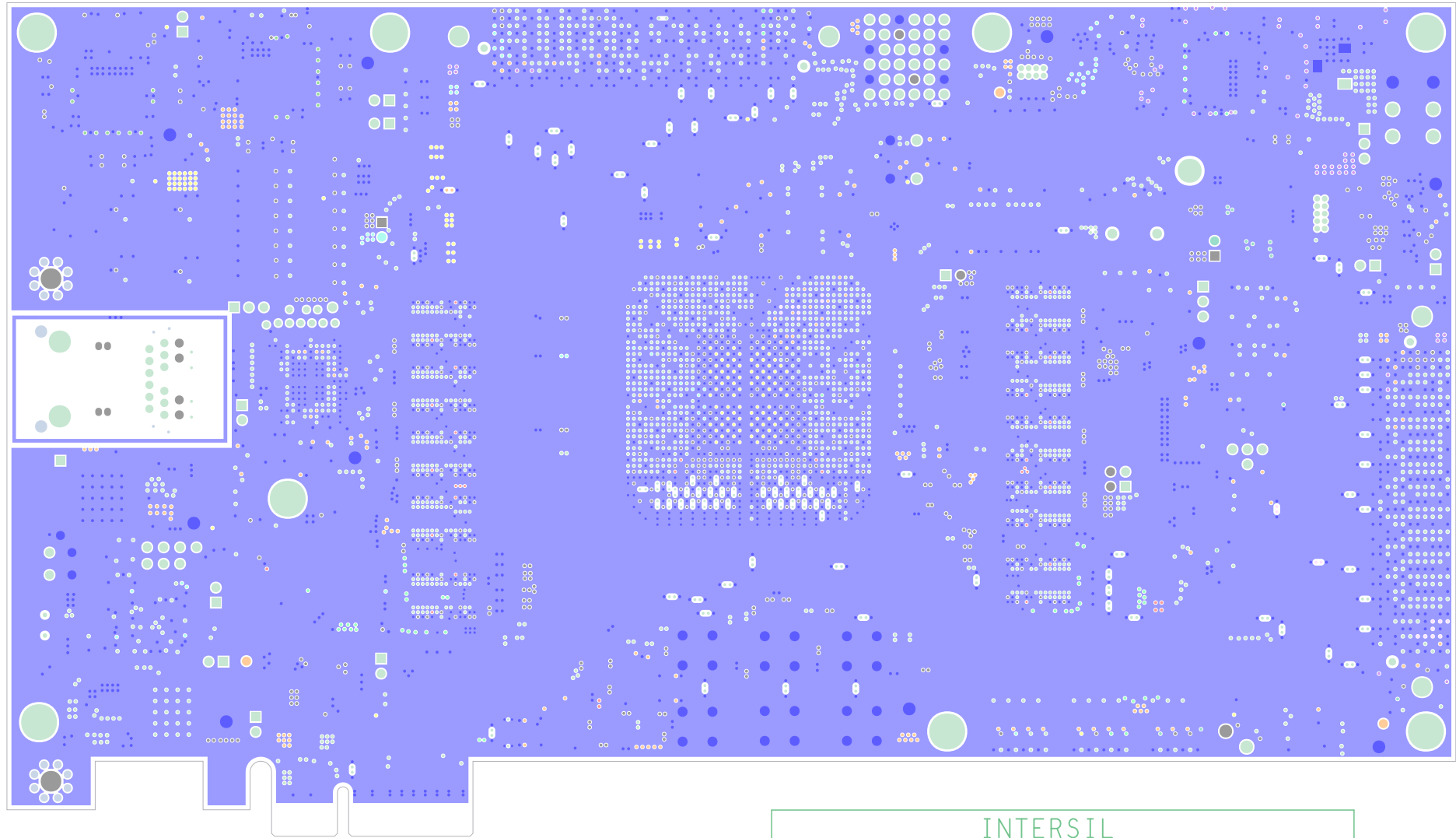
INTERSIL

DATE: 08/03/2020

NAME: ISLRGT4DEMO1Z

REV: B

FILM LAYER: Layer 8 (PWR#2)



INTERSIL

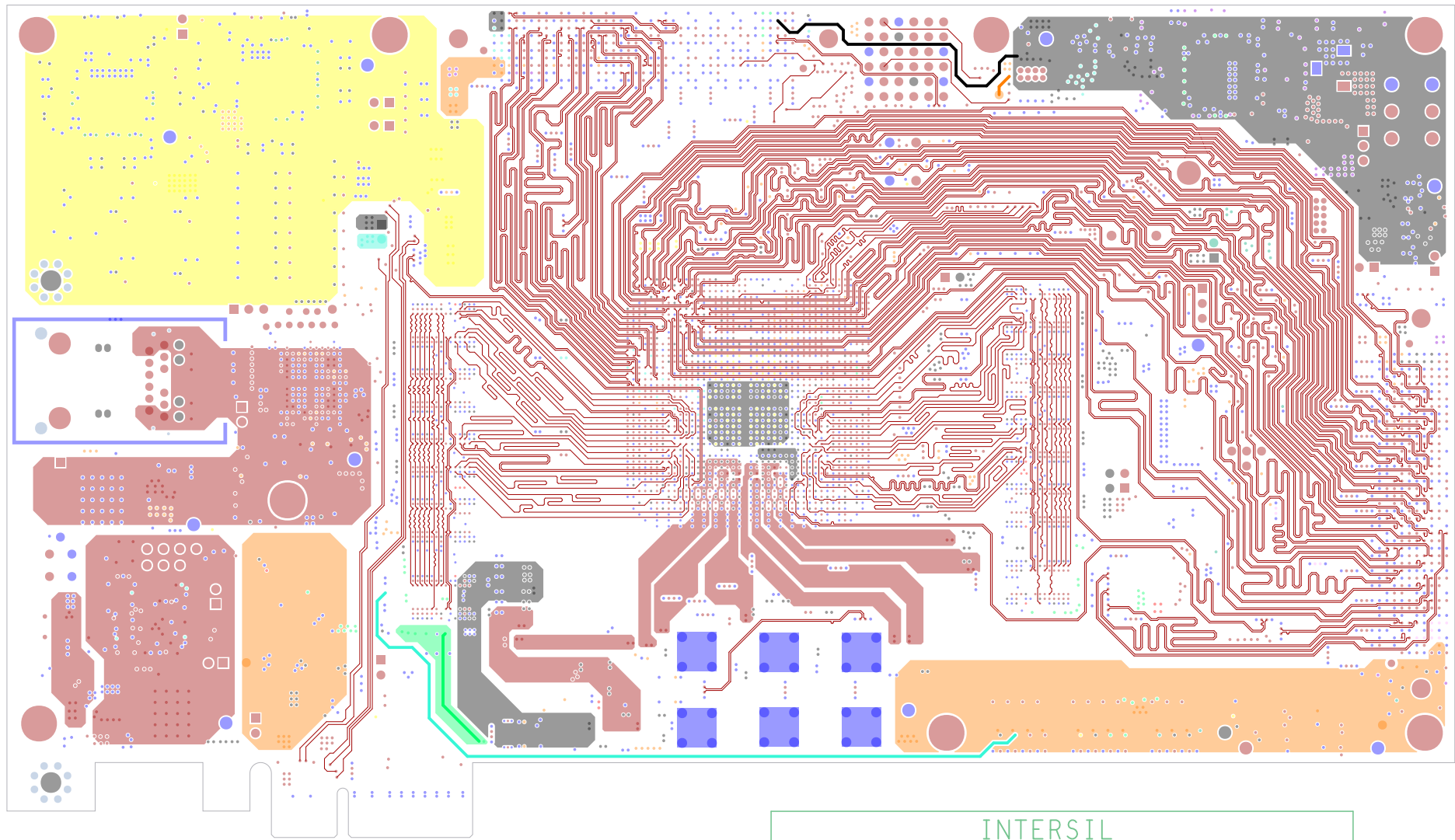
DATE: 08/03/2020

NAME: ISLRGT4DEMO1Z

REV: B

FILM LAYER: Layer 9 (GND#4)





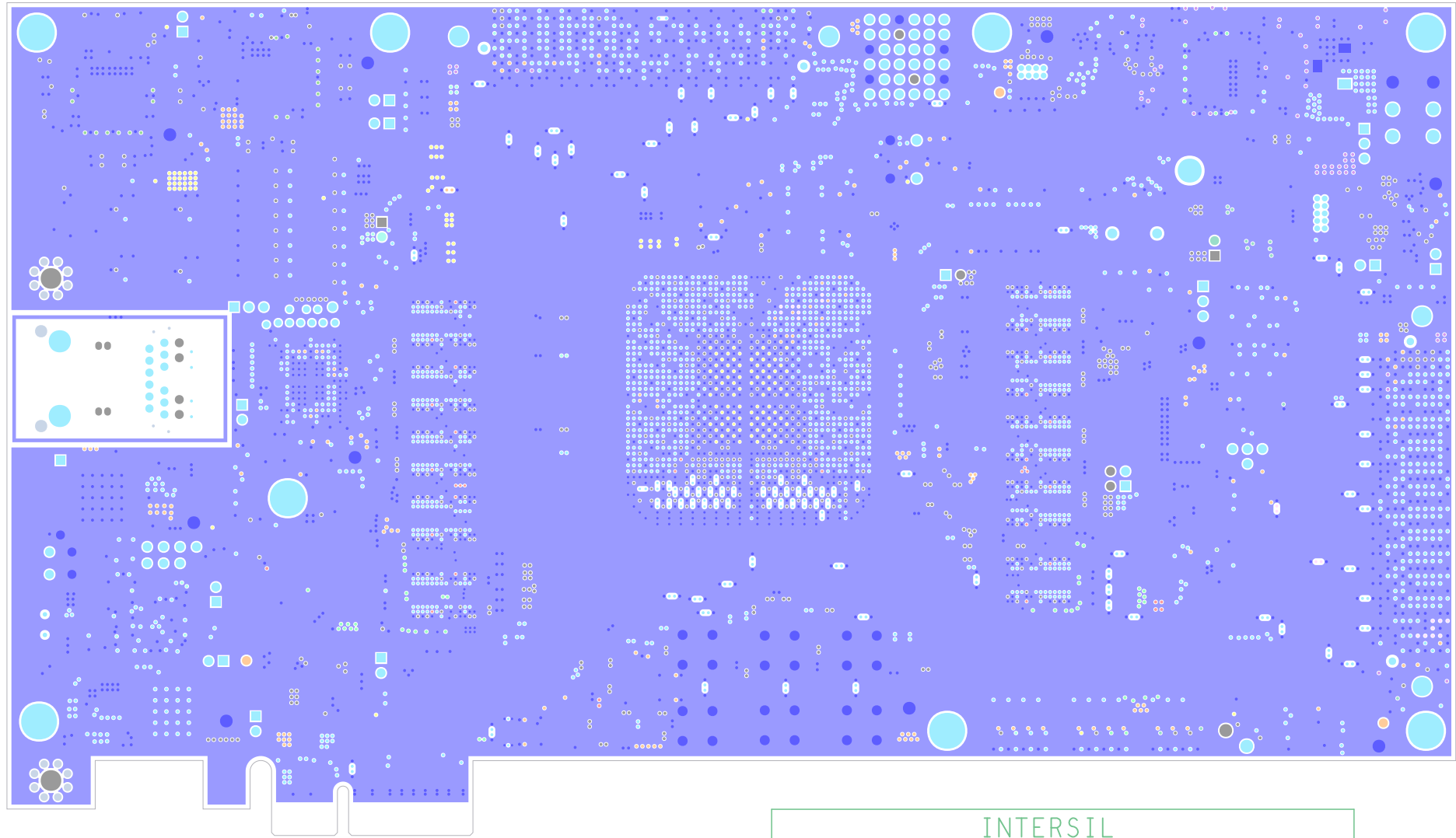
INTERSIL

DATE: 08/03/2020

NAME: ISLRGT4DEMO1Z

REV: B

FILM LAYER: Layer 10 (SIG#3)



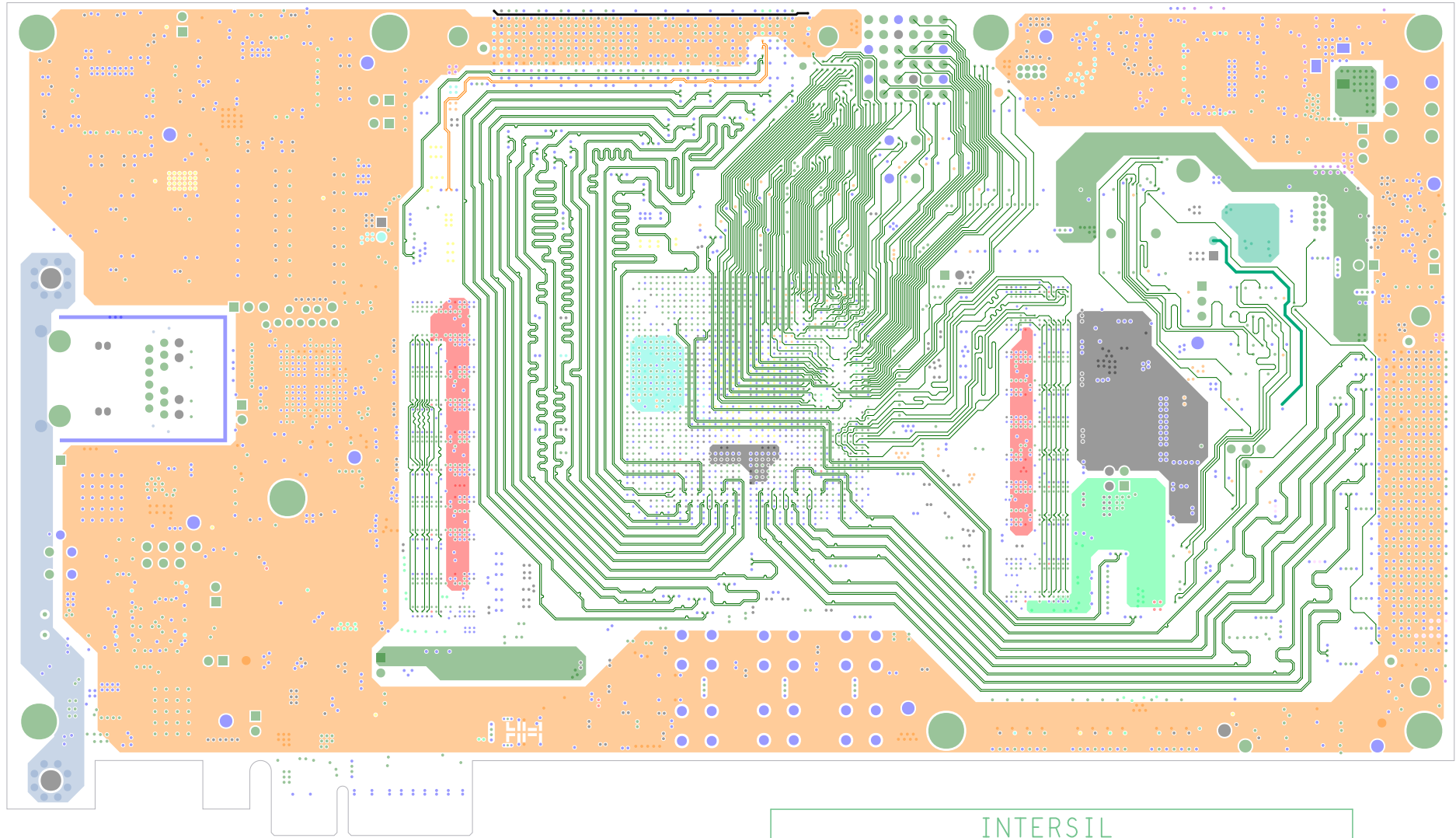
INTERSIL

DATE: 08/03/2020

NAME: ISLRGT4DEMO1Z

REV: B

FILM LAYER: Layer 11 (GND#5)



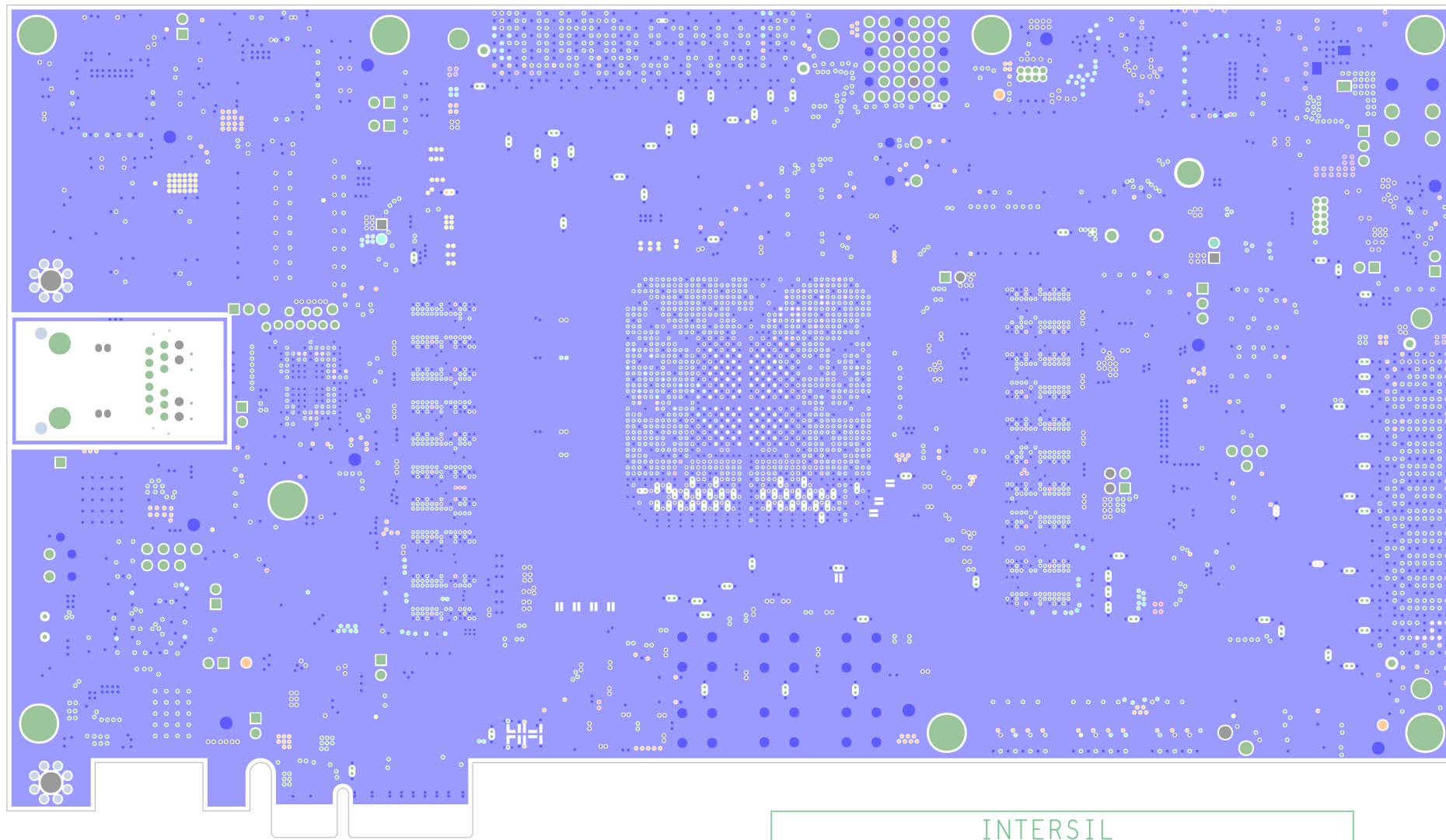
INTERSIL

DATE: 08/03/2020

NAME: ISLRGT4DEMO1Z

REV: B

FILM LAYER: Layer 12 (SIG#4)



INTERSIL

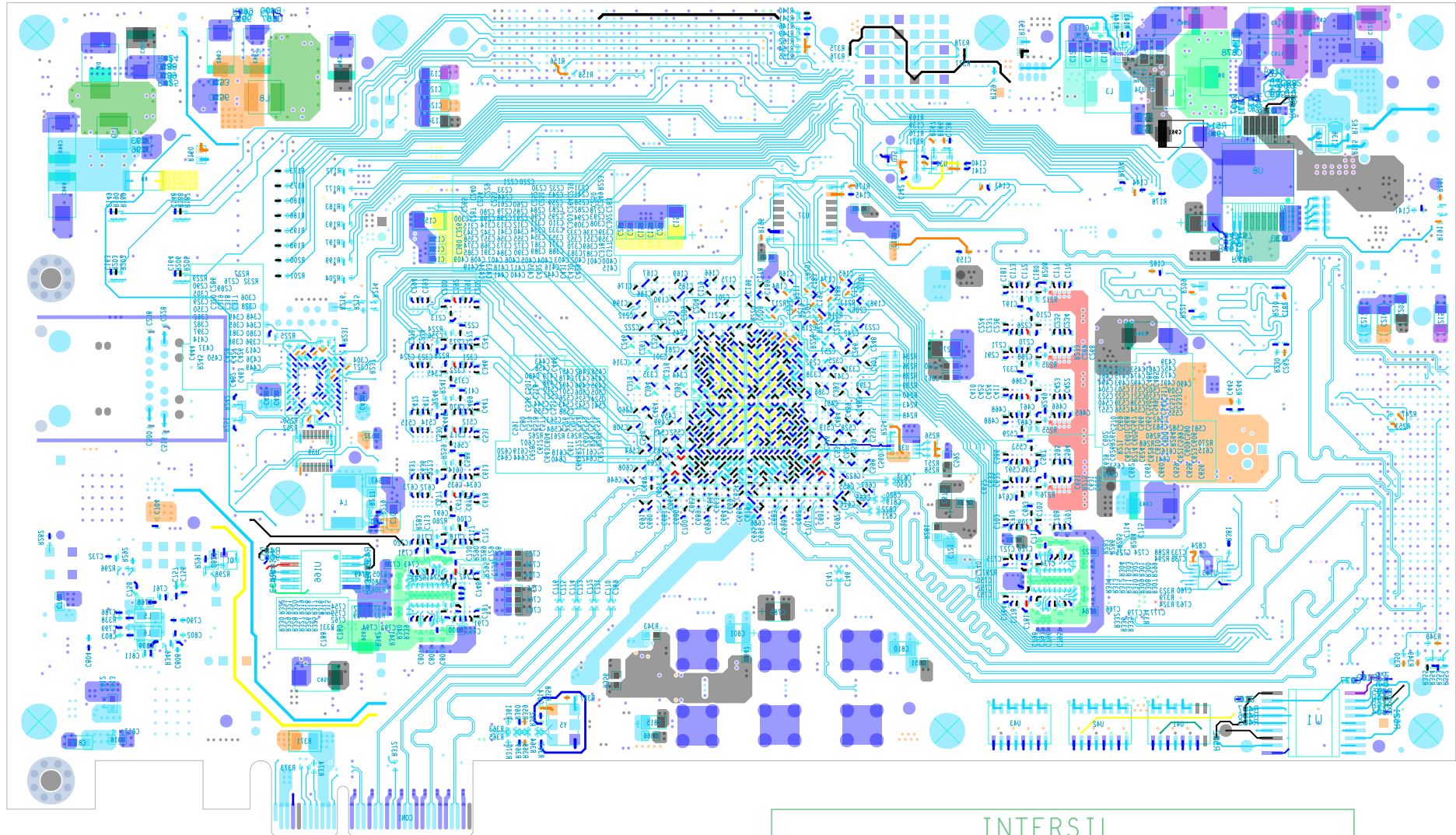
DATE: 08/03/2020

NAME: ISLRGT4DEMO1Z

REV: B

FILM LAYER: Layer 13 (GND#6)

LOAD STANDOFF IN THIS MENTIONED AREA (A LOCATION)



INTERFIL

DATE: 08/03/2020

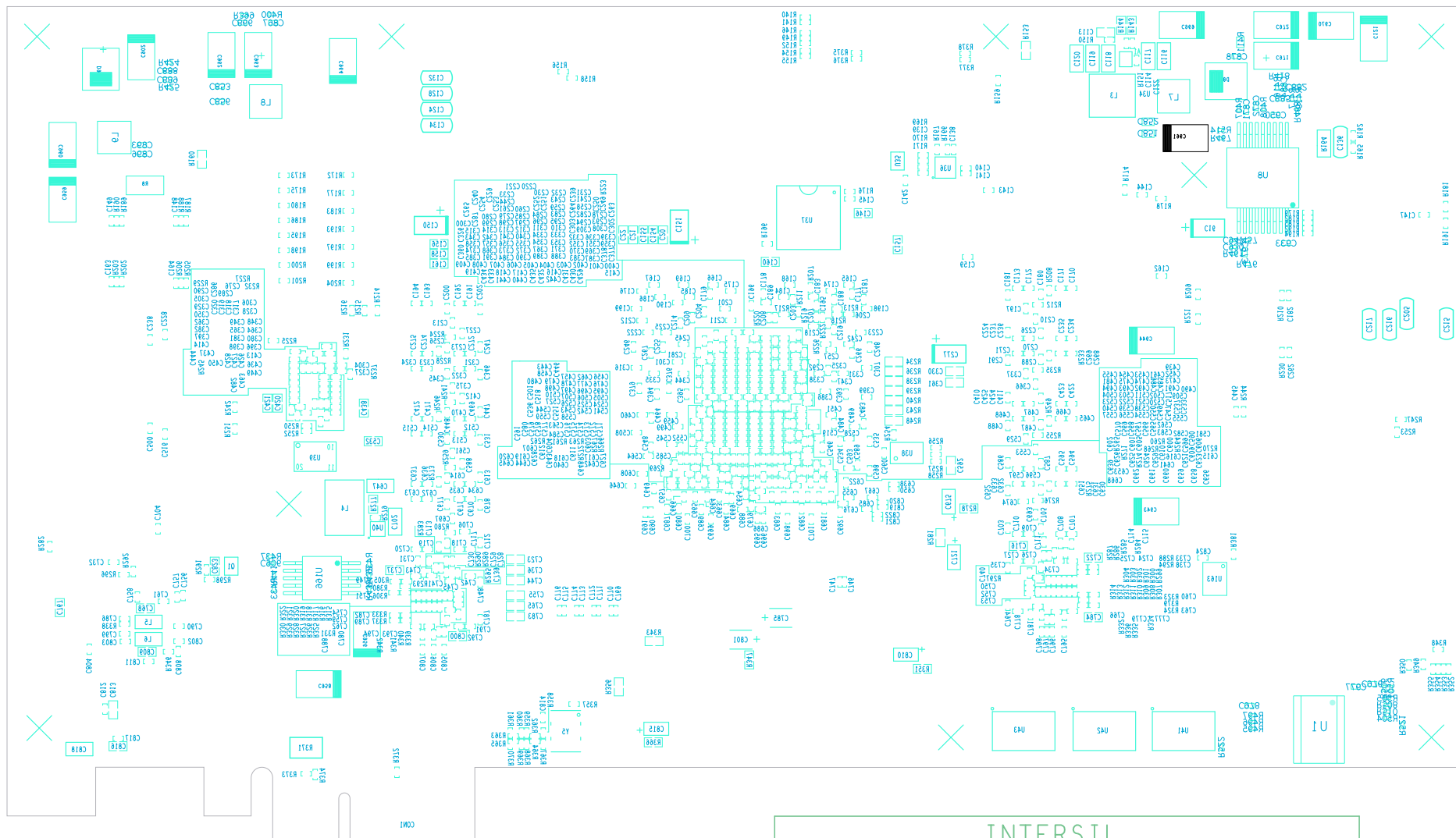
NAME: ISLRGT4DEMO1Z

REV: B

FILM LAYER: ASSEMBLY\_BOTTOM)



LOAD STANDOFF IN THIS MENTIONED AREA (A LOCATION2)



INTERSIL

DATE: 08/03/2020

NAME: ISLRGT4DEMO1Z

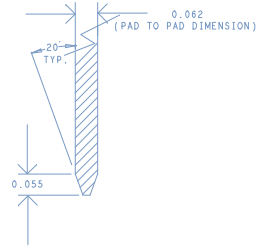
REV: B

FILM LAYER: ASSEMBLY\_BOTTOM



CONTROLLED IMPEDANCE REQUIRED

STACKUP - 14 LAYERS		50 OHM SINGLE	100 OHM DIFFERENTIAL	90 OHM DIFFERENTIAL
DIELECTRIC GLASS STYLE				
Z116	TOP (1.40 mils)	6.5 MILS	5 / 8 MILS	5.1 / 4.9 MILS
	FR-4 DIELECTRIC (4.00 mils)			
Z116	L2_0001 (0.60 mils)	4.0 MILS	3.5/8.0 MILS	
	FR-4 DIELECTRIC (4.50 mils)			
Z116	L2_5101 (0.60 mils)	4.0 MILS	3.5/8.0 MILS	
	FR-4 DIELECTRIC (4.00 mils)			
Z116	L4_0002 (0.60 mils)	4.0 MILS	3.5/8.0 MILS	
	FR-4 DIELECTRIC (4.50 mils)			
Z116	L5_5102 (0.60 mils)	4.0 MILS	3.5/8.0 MILS	
	FR-4 DIELECTRIC (4.00 mils)			
Z116	L6_0003 (0.60 mils)	4.0 MILS	3.5/8.0 MILS	
	FR-4 DIELECTRIC (3.50 mils)			
Z116	L7_P001 (1.30 mils)	4.0 MILS	3.5/8.0 MILS	
	FR-4 DIELECTRIC (2.00 mils)			
Z116	L8_P002 (1.30 mils)	4.0 MILS	3.5/8.0 MILS	
	FR-4 DIELECTRIC (3.50 mils)			
Z116	L9_0004 (0.60 mils)	4.0 MILS	3.5/8.0 MILS	
	FR-4 DIELECTRIC (4.00 mils)			
Z116	L10_2103 (0.60 mils)	4.0 MILS	3.5/8.0 MILS	
	FR-4 DIELECTRIC (4.50 mils)			
Z116	L11_0005 (0.60 mils)	4.0 MILS	3.5/8.0 MILS	
	FR-4 DIELECTRIC (4.00 mils)			
Z116	L12_2104 (0.60 mils)	4.0 MILS	3.5/8.0 MILS	
	FR-4 DIELECTRIC (4.50 mils)			
Z116	L13_0008 (0.60 mils)	6.5 MILS	5 / 8 MILS	
	FR-4 DIELECTRIC (4.00 mils)			
Z116	BOTTOM (1.40 mils)			
	FR-4 DIELECTRIC (4.00 mils)			



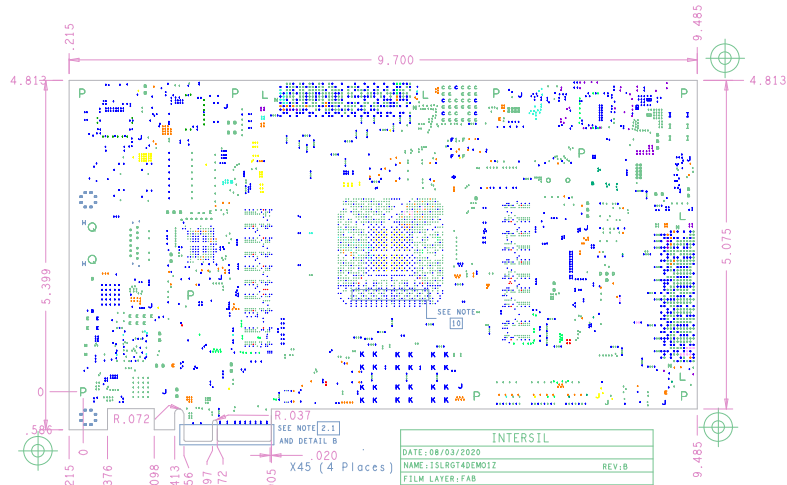
DETAIL B (EDGE BEVEL)  
SCALE = NONE

NOTE: DIELECTRIC GLASS STYLE SHOULD NOT BE CHANGED WITHOUT PRIOR APPROVAL.  
FINISHED TRACE WIDTH, AIR GAP OF 100 OHM DIFFERENTIAL AND 50 OHM SINGLE ENDED SHOULD NOT BE CHANGED FROM ABOVE STATED VALUES.

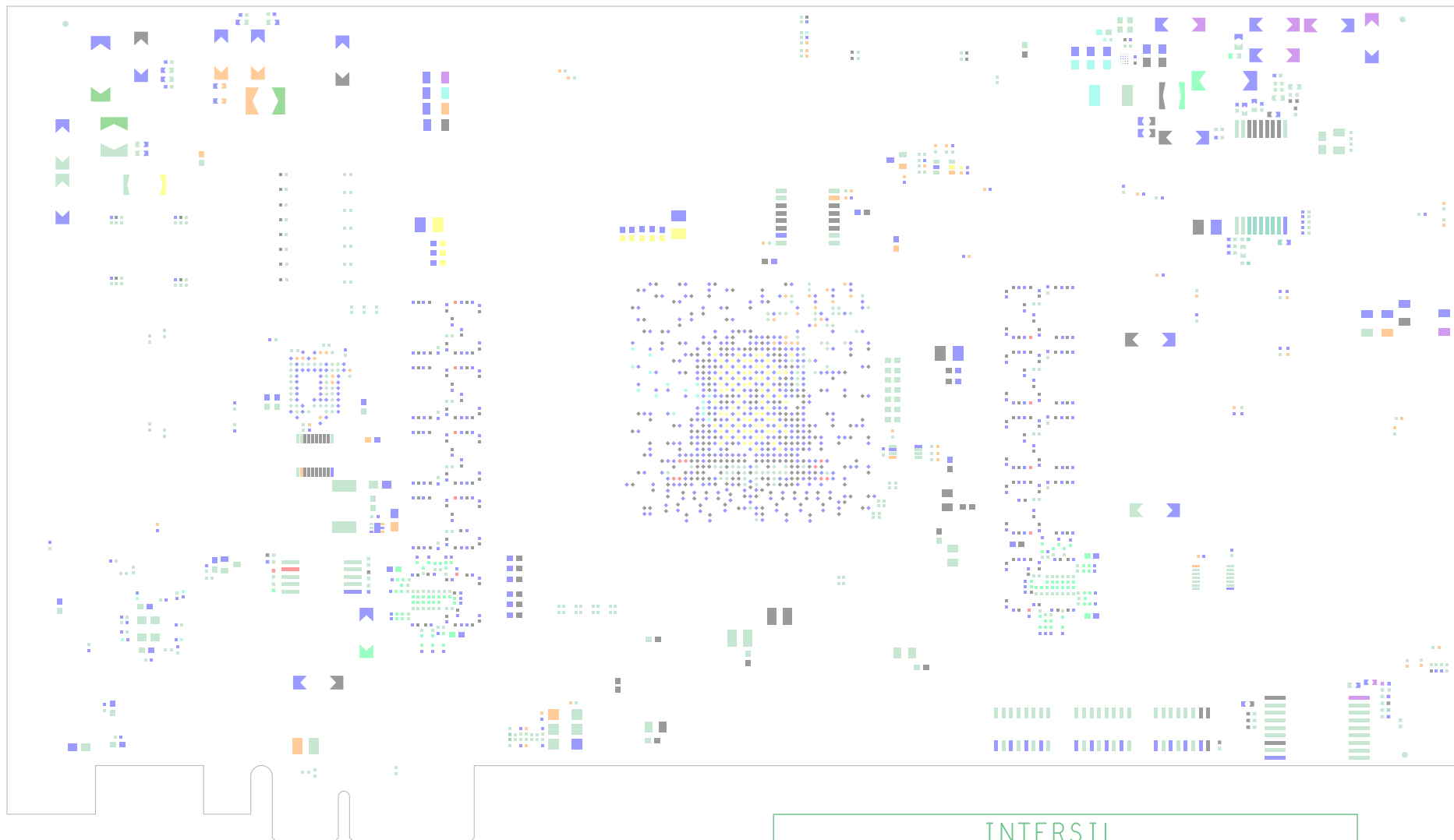
DRILL CHART: TOP to BOTTOM				
ALL UNITS ARE IN MILS				
FIGURE	SIZE	TOLERANCE	PLATED	QTY
1	8.0	+3.0/-3.0	PLATED	4
2	8.0	+3.0/-3.0	PLATED	2374
3	8.0	+3.0/-3.0	PLATED	2
4	10.0	+3.0/-3.0	PLATED	682
5	10.0	+3.0/-3.0	PLATED	2262
6	25.0	+3.0/-3.0	PLATED	10
7	28.0	+2.0/-2.0	PLATED	18
8	35.0	+3.0/-3.0	PLATED	16
9	35.0	+5.0/-0.0	PLATED	16
10	40.0	+3.0/-3.0	PLATED	41
11	40.0	+3.0/-3.0	PLATED	36
12	40.0	+3.0/-3.0	PLATED	4
13	40.0	+3.0/-3.0	PLATED	15
14	40.0	+5.0/-0.0	PLATED	4
15	45.0	+3.0/-3.0	PLATED	4
16	62.0	+3.0/-3.0	PLATED	2
17	65.0	+3.0/-3.0	PLATED	12
18	65.0	+4.0/-0.0	PLATED	6
19	66.93	+3.0/-3.0	PLATED	24
20	106.0	+3.0/-3.0	PLATED	4
21	35.5	+2.0/-0.0	NON-PLATED	2
22	50.0	+2.0/-0.0	NON-PLATED	4
23	66.0	+2.0/-0.0	NON-PLATED	2
24	125.0	+2.0/-2.0	NON-PLATED	9
25	128.0	+2.0/-2.0	NON-PLATED	2
26	138.0	+2.0/-2.0	NON-PLATED	2
27	63.0x39.37	+3.0/-3.0	PLATED	1
28	63.0x39.37	+3.0/-3.0	PLATED	2

NOTES: UNLESS OTHERWISE SPECIFIED

1. MATERIAL: FR-4.
2. GENERAL PLATING - FLASH GOLD  
FOR SELECTIVE PLATING SEE BELOW
3. SELECTIVE HARD GOLD PLATING TO BE FLAT & PLATED 30uIN(MINIMUM) OF Au OVER 150-200uIN OF Ni. GOLD PLATING ON PAD SHOULD BE THE SAME LEVEL OR ABOVE THE SOLDER RESIST SURFACE ON TOP AND BOTTOM
4. HOLES TO BE PLATED THROUGH.  
PLATING IN HOLES TO BE 0.001 MIN. THICK.
5. HOLE SIZES ARE AFTER PLATING.
6. SILKSCREEN BOTH SIDES, WHITE.
7. FABRICATE PER DIMENSIONS SHOWN.
8. SOLDER MASK TOP AND BOTTOM SIDES WITH LIQUID PHOTO IMAGABLE OR DRY FILM SOLDER MASK. COLOR GREEN.
9. TOTAL BOARD THICKNESS: .62 mil +/- .6 mil 14 LAYER CONSTRUCTION.
10. APPLY THIEVING AS REQUIRED.
11. VIAS IN THIS REGION NEEDS VIA PLUGGING FROM BOTTOM SIDE, REFER STACKUP THE VIAS SHOULD BE SMOOTHENED TO BOARD SURFACE ON TOP AND BOTTOM
12. BOARD MUST BE UL 94V-1 APPROVED.
13. FABRICATE BOARD PER IPC-A-600D STANDARD.
14. CLIP SILKSCREEN ON NO MASK AREA.
15. IMPEDANCE TOLERANCE SHOULD BE +/- 5% ON L1, L12, L14. REST OF THE LAYERS CAN HAVE 10% TOLERANCE
16. NO VENDOR LOGO. ART WORKS SHOULD NOT BE CHANGED WITHOUT PRIOR APPROVAL FROM PACTRON
17. DEBURR ALL SHARP EDGES
18. REMOVE UNUSED PADS IN ALL INNER LAYERS.
19. BOARD DIMENSIONS ARE IN INCHES
20. WARP & TWIST: SHALL NOT EXCEED 0.005 INCHES PER INCH
21. THIS IS A ROHS COMPLIANT BOARD
22. EDGE FINGER- CHAMFER EDGES MUST BE FREE OF CUTTING BURRS



Drawn By:	Date Drawn:	Engineer:
Released By:	Date Released:	
Updated By:	Date Updated:	
ISLRGT DEMO BOARD		
FILENAME:	ISLRGT4DEMO1ZA	
SHEET		



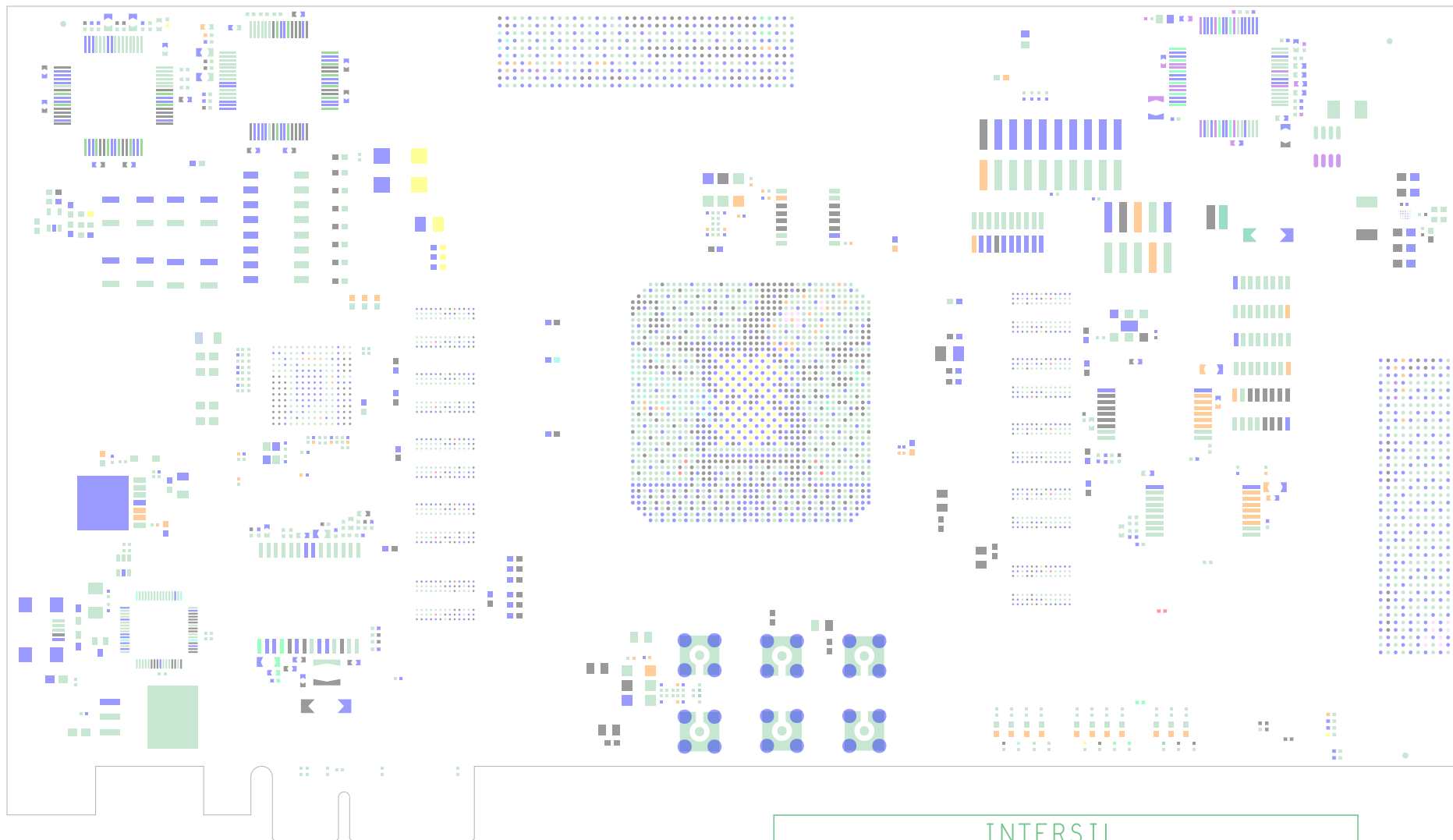
INTERSIL

DATE: 08/03/2020

NAME: ISLRGT4DEMO1Z

REV: B

FILM LAYER: SOLDER PASTE (BOTTOM)



INTERSIL

DATE: 08/03/2020

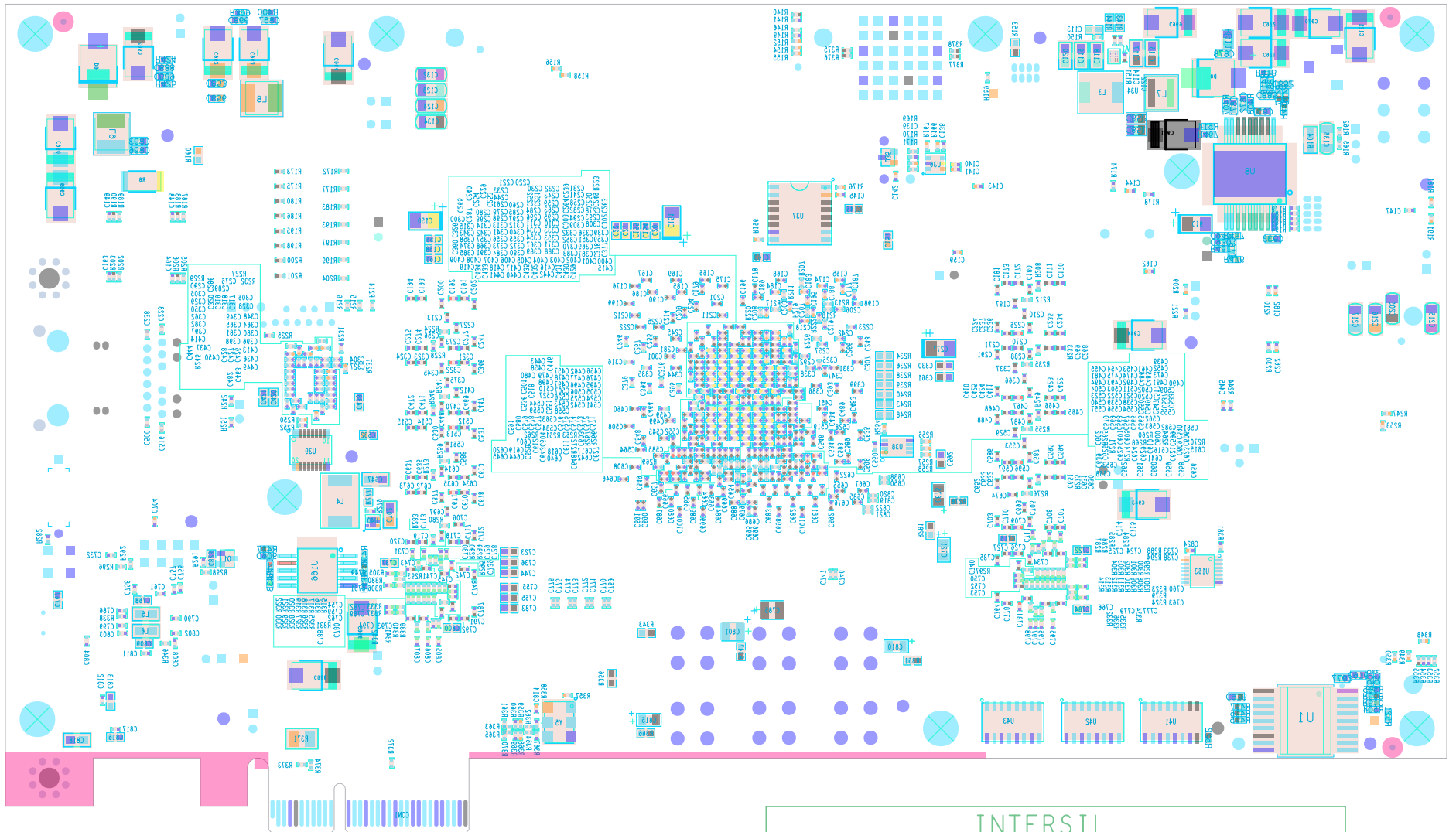
NAME: ISLRGT4DEMO1Z

REV: B

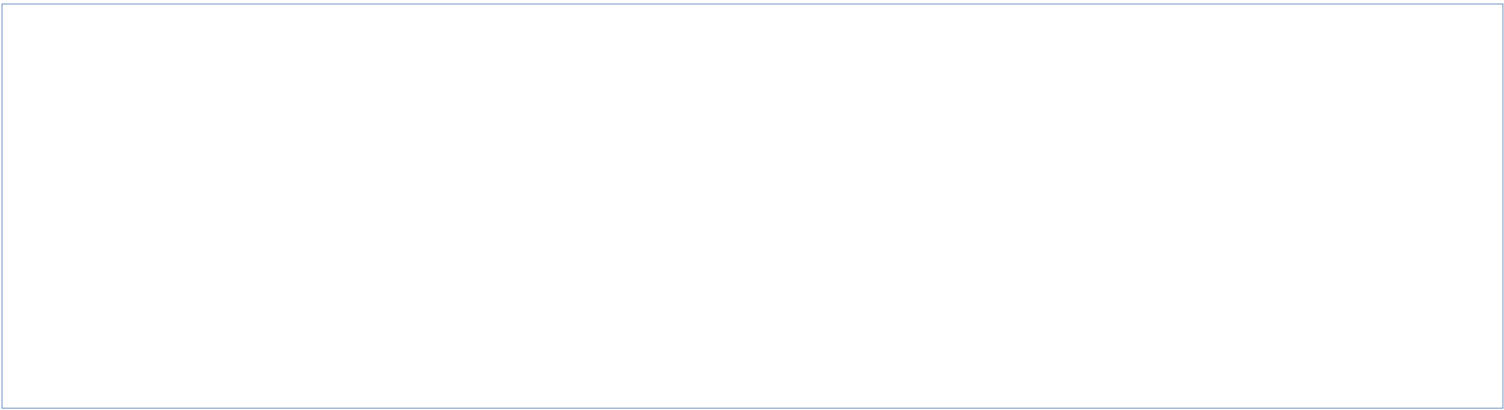
FILM LAYER: SOLDER PASTE (TOP)



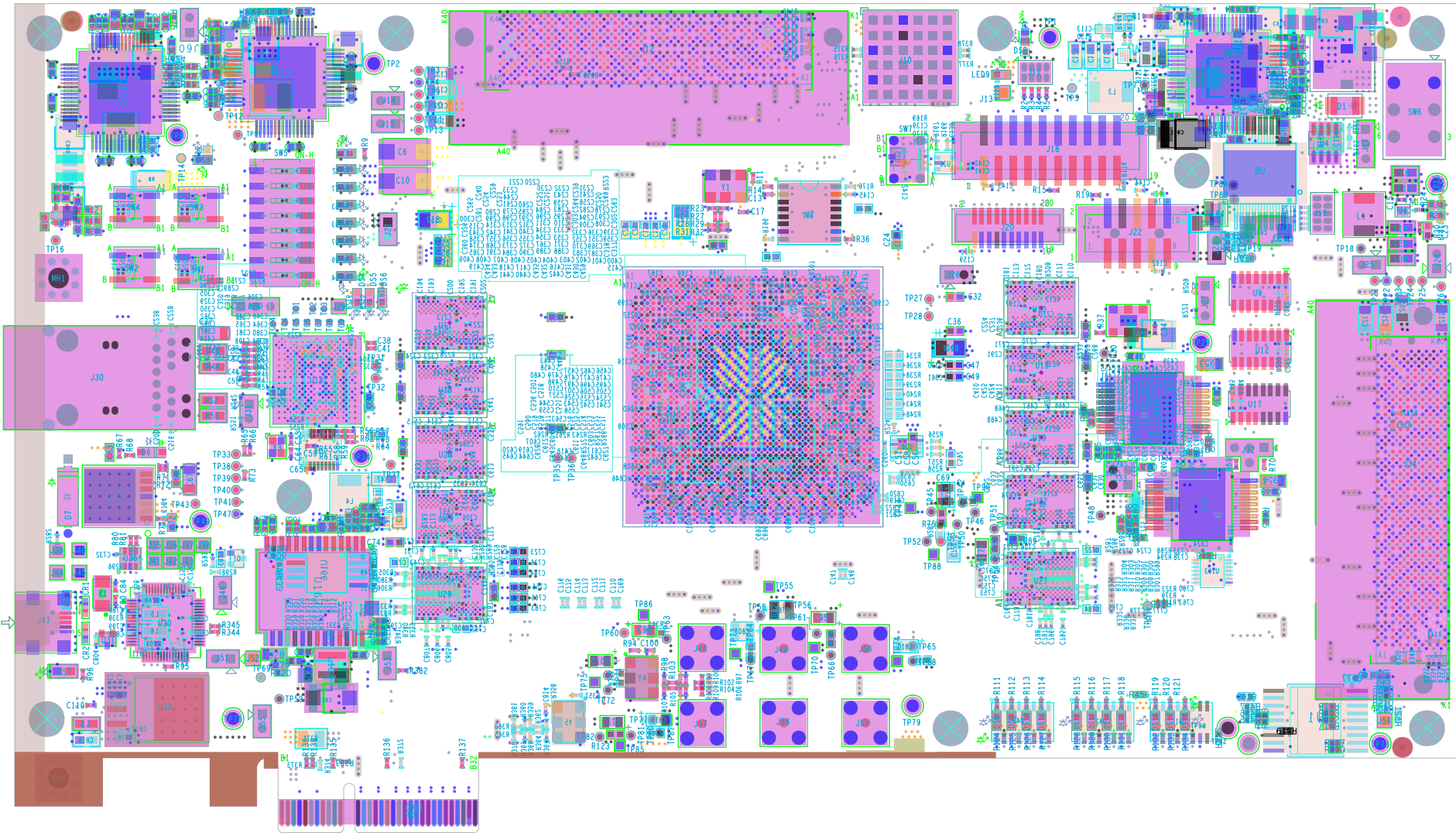
LOAD STANDOFF IN THIS MENTIONED AREA (9 LOCATIONS)







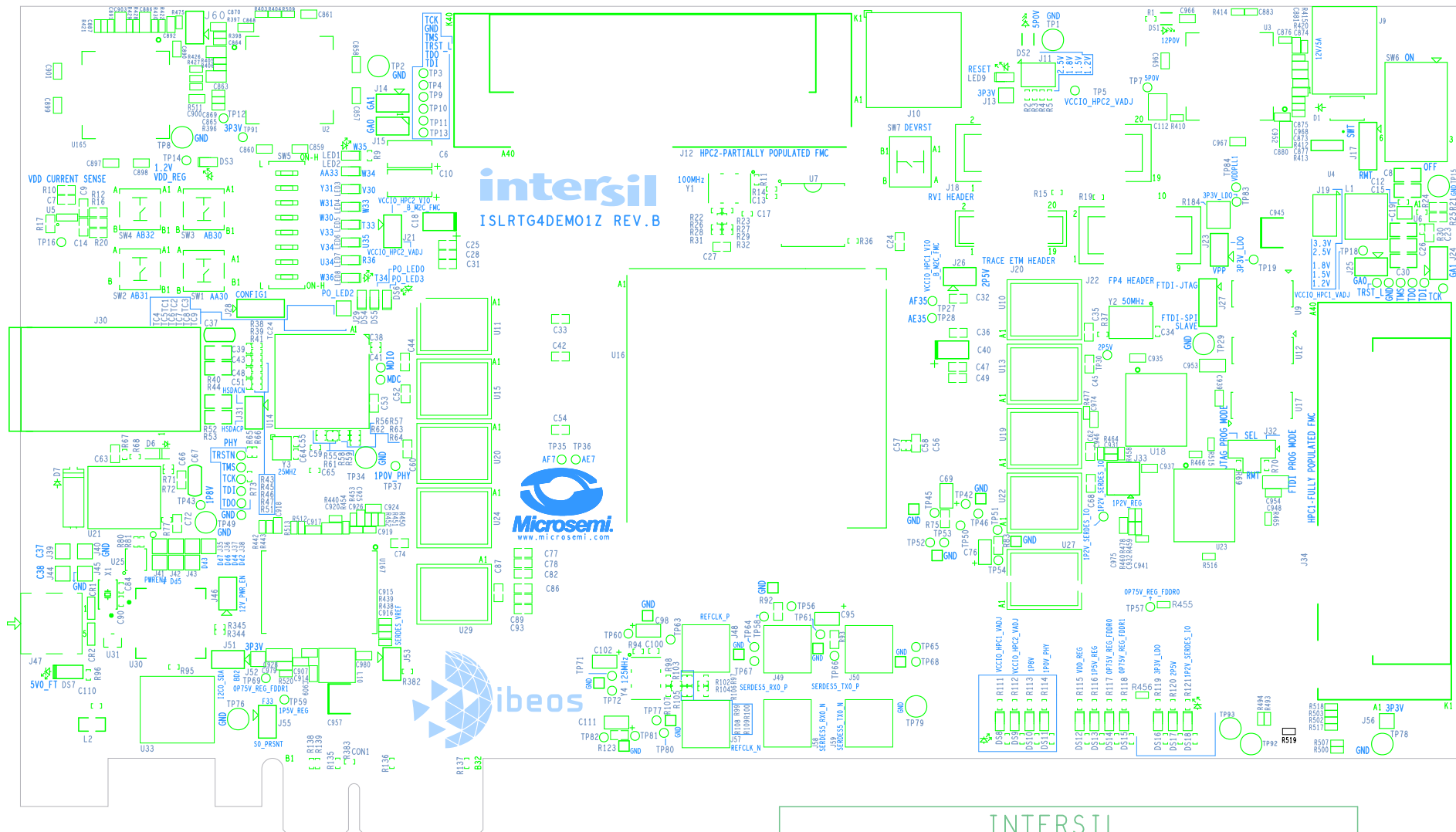
LOAD STANDOFF IN THIS MENTIONED AREA ( 9 LOCATIONS )



ASSEMBLY\_BOTTOM







INTERISIL

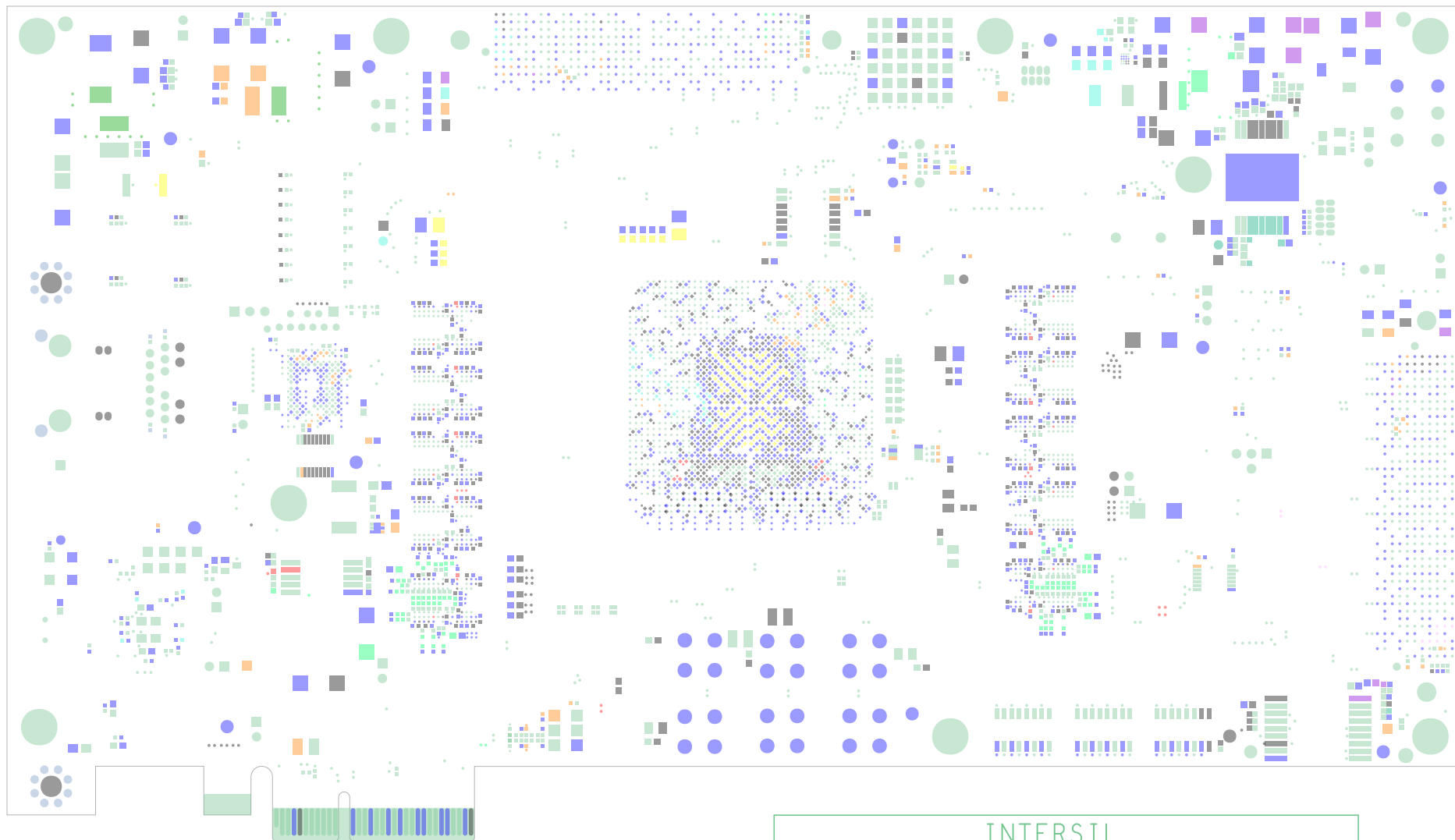
DATE: 08/03/2020

NAME: ISLRGT4DEMO1Z

REV: B

FILM LAYER: SILKSCREEN (TOP)





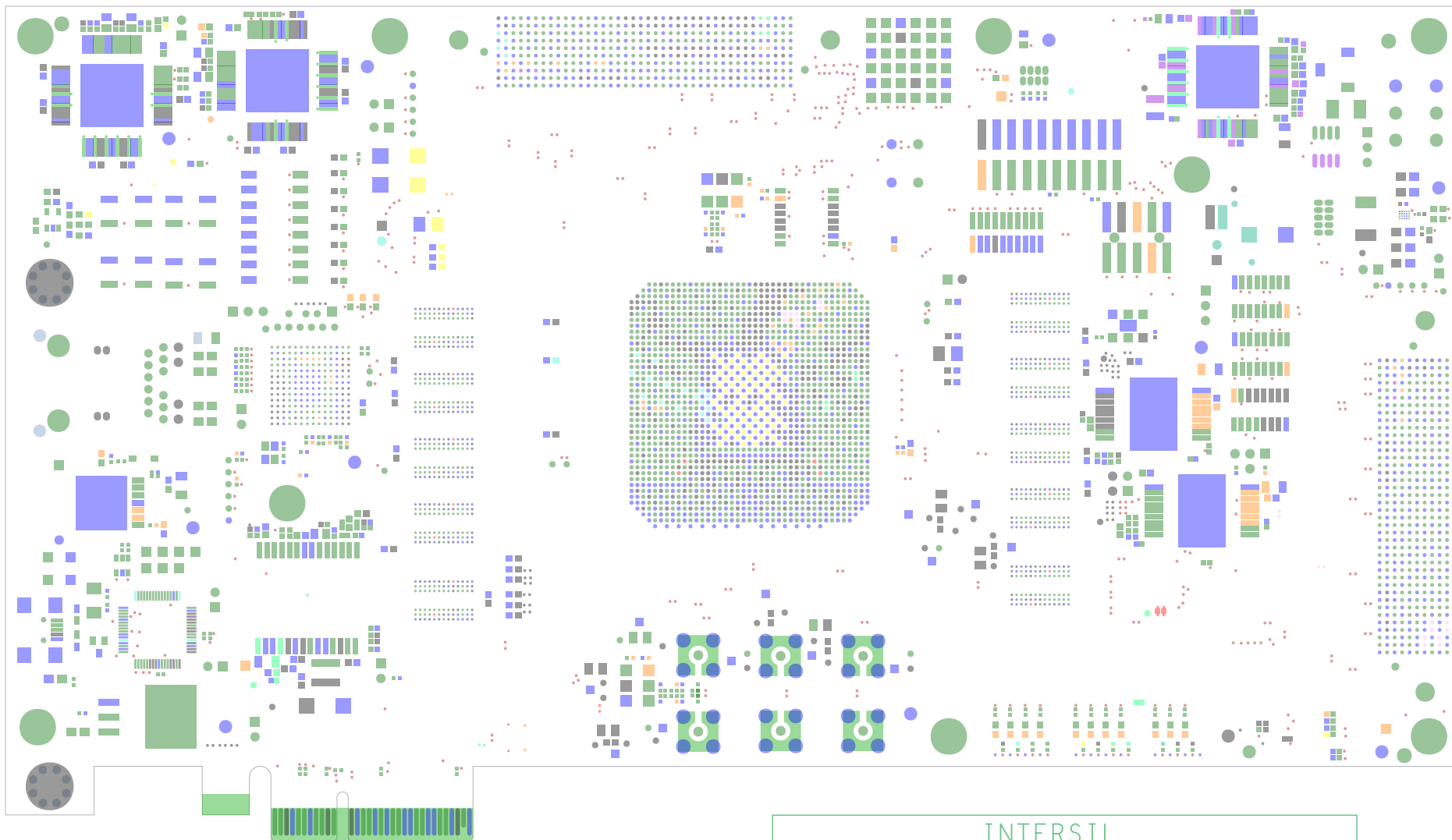
INTERSIL

DATE: 08/03/2020

NAME: ISLRGT4DEMO1Z

REV: B

FILM LAYER: SOLDER MASK (BOTTOM)



INTERSIL

DATE: 08/03/2020

NAME: ISLRGT4DEMO1Z

REV: B

FILM LAYER: SOLDER MASK (TOP)