

PHYSICAL BOARD DIMENSIONS
& LAYER STRUCTURE

	SILK TOP
	MASK TOP
	COMPONENT (TOP)
	LAYER 2
	LAYER 3
	LAYER 4
	LAYER 5
	LAYER 6
	LAYER 7
	LAYER 8
	SOLDER (BOTTOM)
	MASK BOTTOM
	SILK BOTTOM

** If it is critical that Layer 1 and Layer 2
and Layer 7 and Layer 8 are
approximately at the specified distance.

DRILL CHART: TOP to BOTTOM

FIGURE	SIZE	PLATED	QTY
•	11.0	PLATED	2261
•	12.0	PLATED	7786
⊙	35.0	PLATED	6
⊙	40.0	PLATED	33
⊙	41.0	PLATED	139
⊙	50.0	PLATED	4
⊙	100.0	PLATED	4
⊙	215.0	PLATED	4
⊙	220.0x60.0	PLATED	4

DRILL CHART: TOP to L2

FIGURE	SIZE	PLATED	QTY
•	10.0	PLATED	11
•	11.0	PLATED	4

DRILL CHART: TOP to L3

FIGURE	SIZE	PLATED	QTY
•	11.0	PLATED	52
⊙	12.0	PLATED	345

DRILL CHART: TOP to L4

FIGURE	SIZE	PLATED	QTY
•	11.0	PLATED	2
⊙	12.0	PLATED	233

DRILL CHART: TOP to L5

FIGURE	SIZE	PLATED	QTY
•	10.0	PLATED	352
•	11.0	PLATED	37

DRILL CHART: TOP to L6

FIGURE	SIZE	PLATED	QTY
•	10.0	PLATED	333

DRILL CHART: TOP to L7

FIGURE	SIZE	PLATED	QTY
•	10.0	PLATED	3

FIGURE	SIZE	PLATED	QTY
⊙	10.0	PLATED	9
⊙	11.0	PLATED	6

FIGURE	SIZE	PLATED	QTY
⊙	10.0	PLATED	7

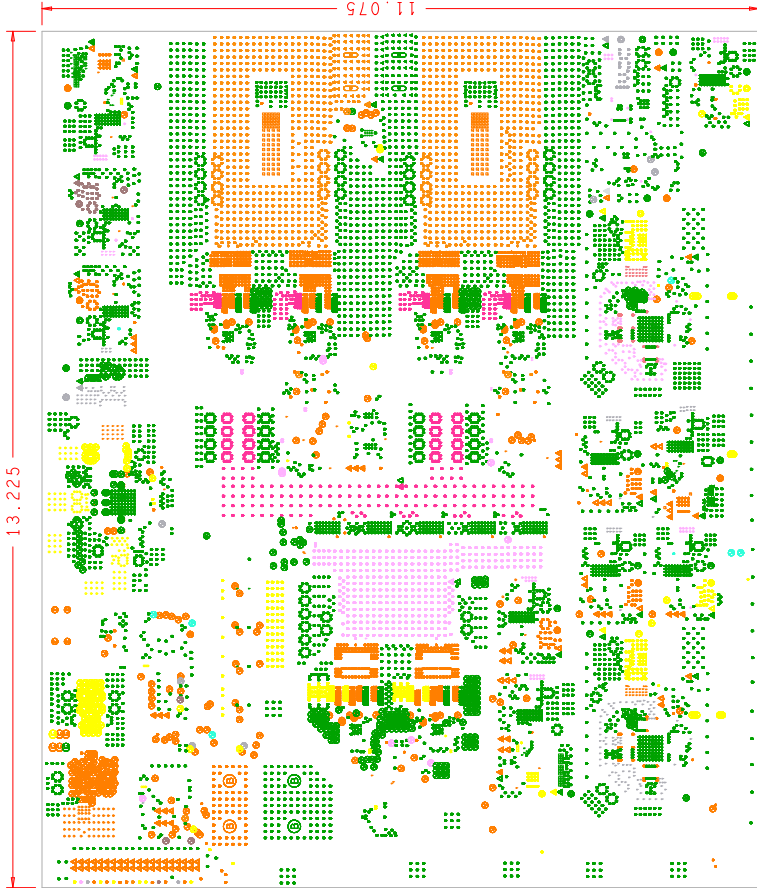
FIGURE	SIZE	PLATED	QTY
•	10.0	PLATED	4
•	11.0	PLATED	14

FIGURE	SIZE	PLATED	QTY
•	10.0	PLATED	43
•	11.0	PLATED	150

FIGURE	SIZE	PLATED	QTY
•	11.0	PLATED	12

NOTES:

1. THIS BOARD IS RoHS COMPLIANT.
2. PRINTED WIRING BOARD DESIGN AND ACCEPTANCE CRITERIA SHALL BE IAW WITH THE REQUIREMENTS OF IPC-D-275 AND IPC-A-600.
3. MATERIAL: FR4 (RoHS COMPLIANT), 2 OZ COPPER, OUTER / 10Z, INNER LAYERS
4. APPLY SOLDER MASK, BOTH SIDES OVER BARE COPPER IAW IPC-SM-840. CLASS 2 (LPT) (BLUE MASK).
5. ALL PATTERNS ARE VIEWED FROM THE PRIMARY SIDE LOOKING THROUGH THE BOARD.
6. UNLESS OTHERWISE SPECIFIED ALL HOLE DIAMETERS ARE AFTER PLATING.
7. APPLY SILKSCREEN USING WHITE NON-CONDUCTIVE EPOXY BASED INK.
8. PWB MUST BE 100% ELECTRICALLY TESTED FOR SHORTS AND CONTINUITY. USE NETLIST PROVIDED ISLVERSALDEM027A IPC356.IPC IAW IPC-D-356. MARK DATE CODE AND MANUFACTURES IDENTIFICATION ON SOLDER SIDE PER IPC-6011 AND IPC-6012.
10. TOLERANCE ON ALL DRILL HOLES SHALL BE IAW IPC-D-2221 & 2222 UNLESS OTHERWISE SPECIFIED.
11. PLEASE KEEP OR SILKSCREEN THE INTERSIL LOGO ON BOARD. DO NOT SWITCH TO RENESAS LOGO ON THIS BOARD.
12. ALL 11 MIL VIA'S ARE TO BE NON-CONDUCTIVE EPOXY FILLED AND CAPPED.



DRILL

Drawn By: Tim K. Leeson	Reviewed By: 12/20/2022	Tim Lab
Approved By: 12/20/2022	Approved By: 12/20/2022	ISLVERSAL DEMO Board Layout
Intersil	REVISION	1 of 1