

# RTK0EMA6LOC00000BJ

## schematic

- 01 : Contents
- 02 : MCU(1/2)
- 03 : MCU(2/2)
- 04 : Inverter Connector
- 05 : HALL/ENC
- 06 : I/F Connector
- 07 : JLOB
- 08 : Ether CAT
- 09 : SDHI
- 10 : USB
- 11 : History

Supplementary explanation :

DNF: unmounted part

Access point : <horizontal, vertical, page>

Ex.

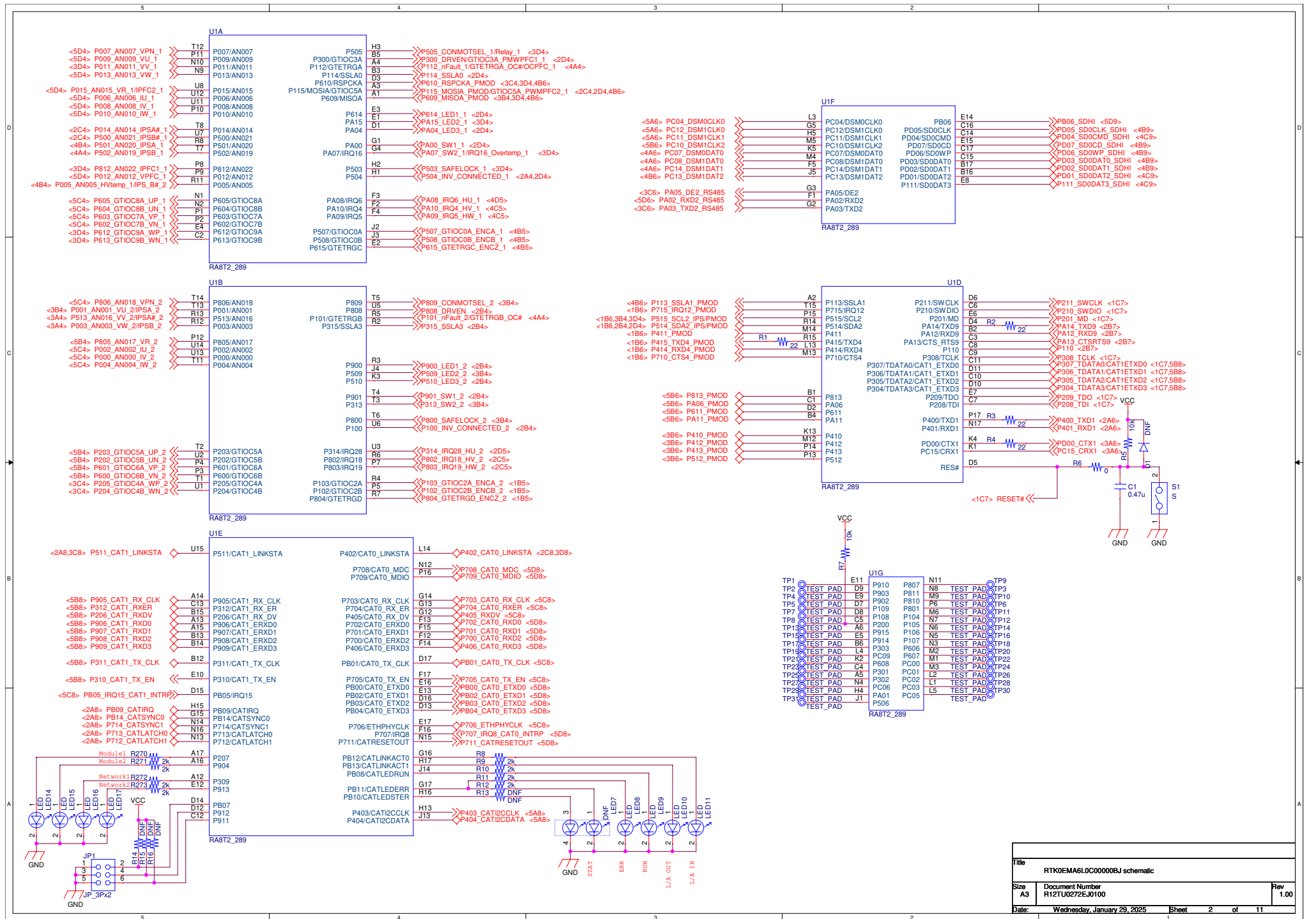
< 4 C 3 >

page

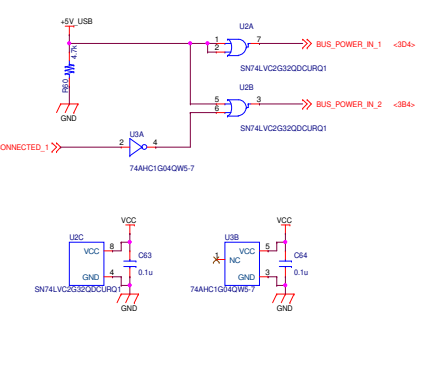
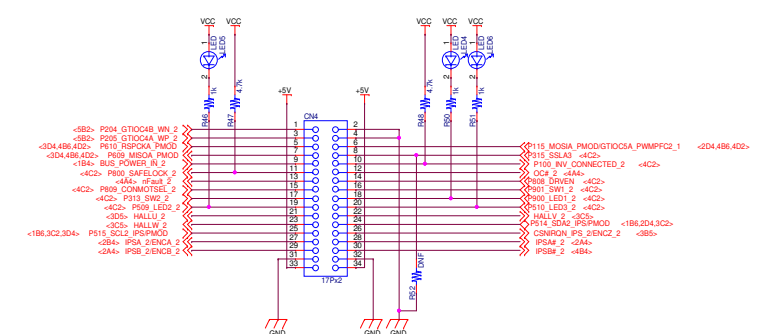
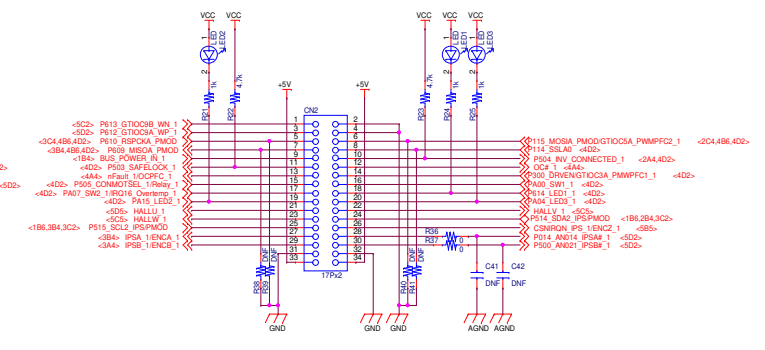
vertical

horizontal

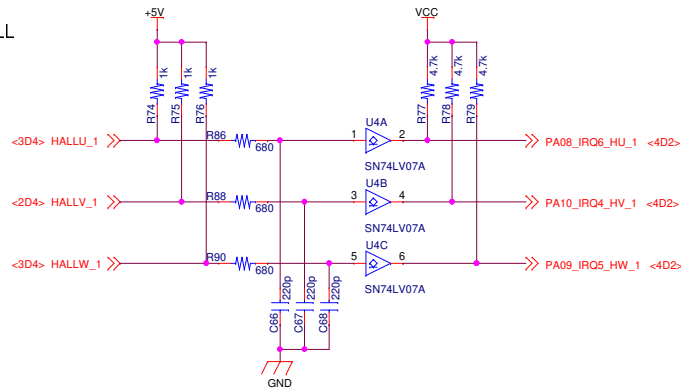
Title		
RTK0EMA6LOC00000BJ schematic		
Size	Document Number	Rev
A3	R12TU0272EJ0100	1.00
Date:	Wednesday, January 29, 2025	Sheet 1 of 11



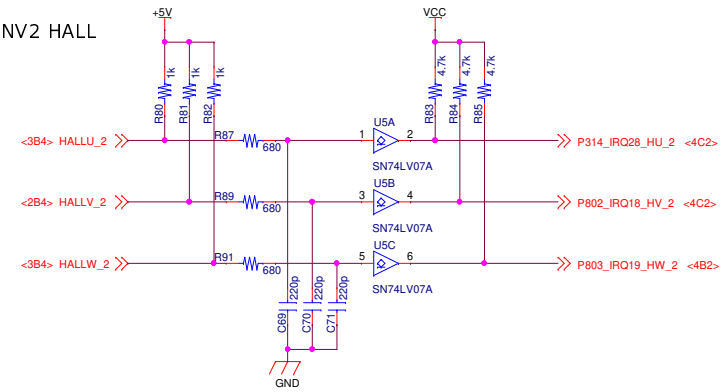




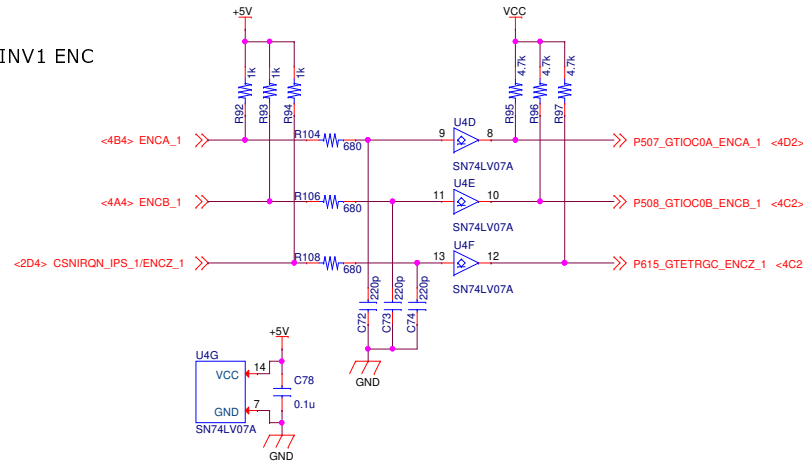
# INV1 HALL



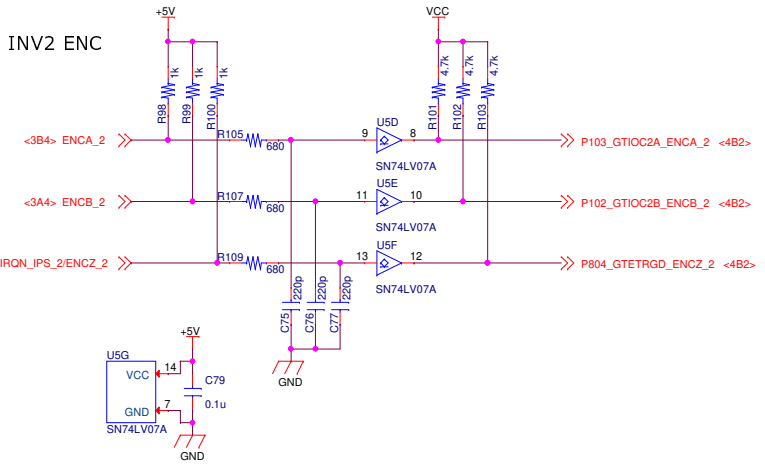
# INV2 HALL



# INV1 ENC

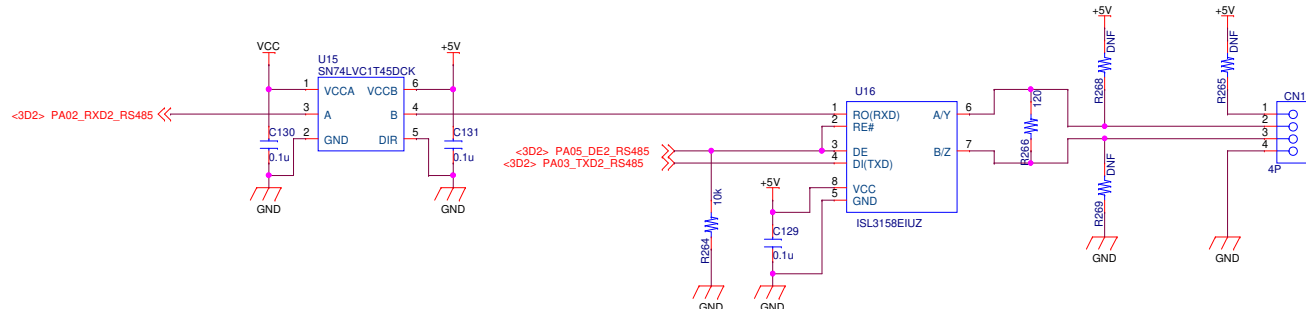


# INV2 ENC

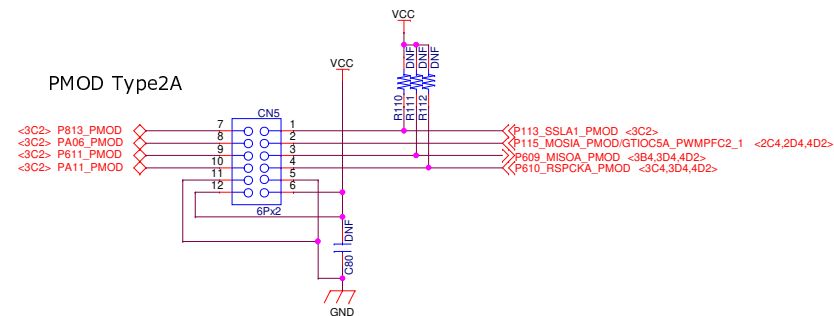


Title		
RTK0EMA6LOC00000BJ schematic		
Size	Document Number	Rev
A3	R12TU0272EJ0100	1.00
Date:	Wednesday, January 29, 2025	Sheet 5 of 11

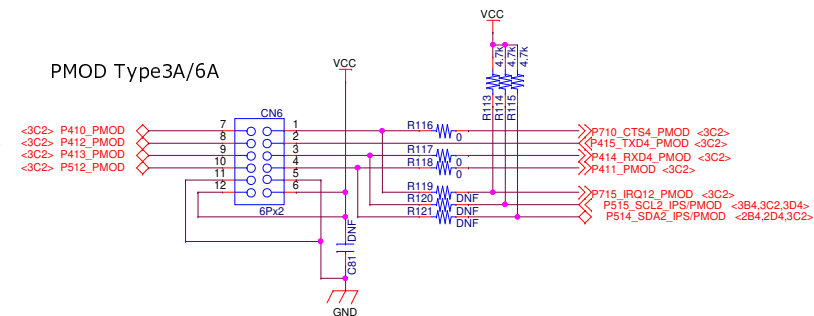
# RS-485



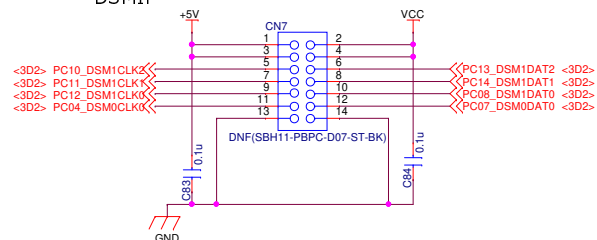
# PMOD Type2A



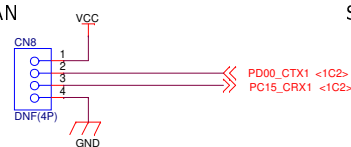
# PMOD Type3A/6A



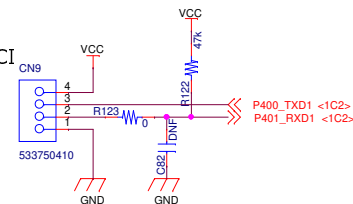
# DSMIF



# CAN

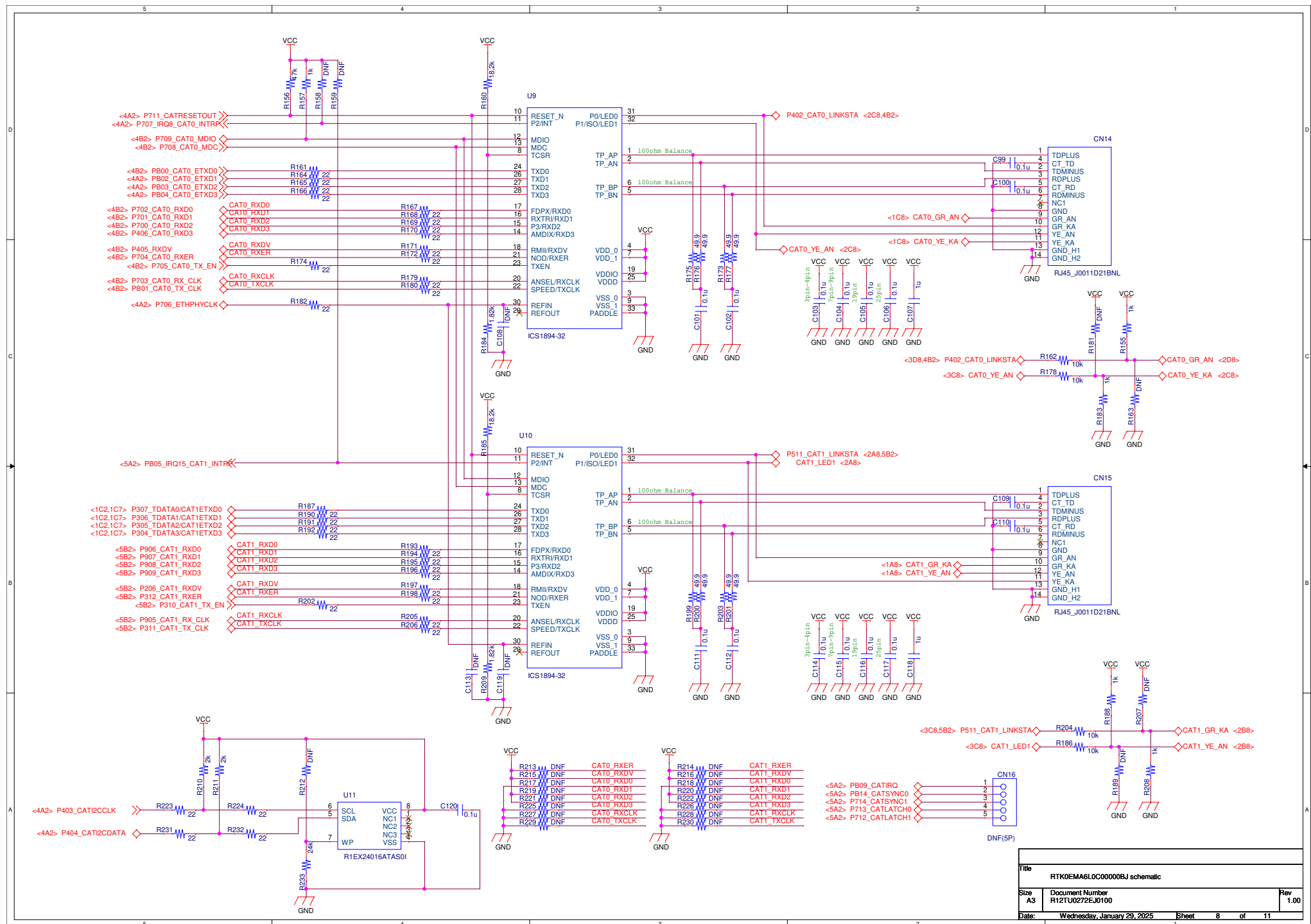


# SCI



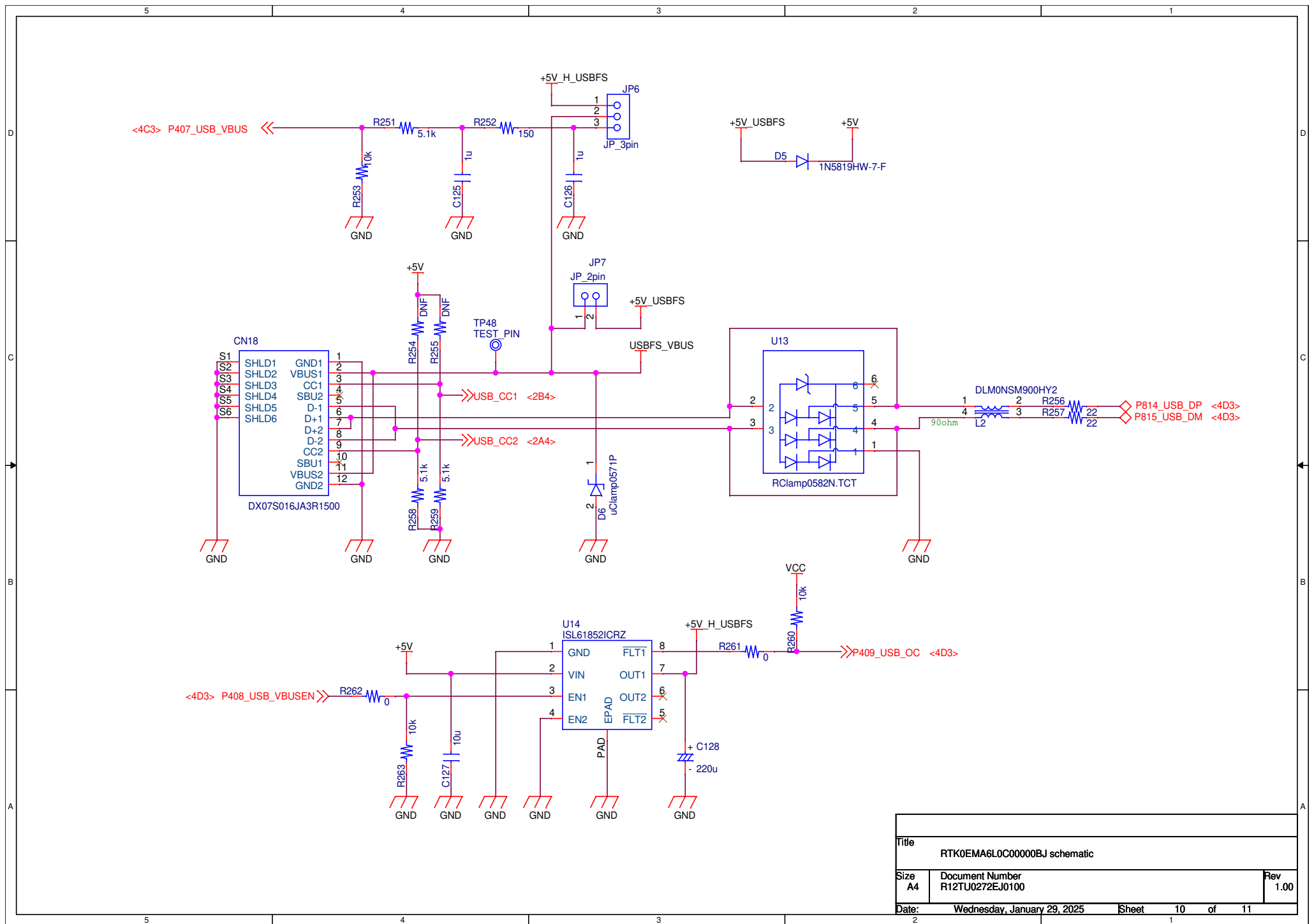
Title		
RTK0EMA6LOC00000BJ schematic		
Size	Document Number	Rev
A3	R12TU0272EJ0100	1.00
Date:	Wednesday, January 29, 2025	Sheet 6 of 11











Title		
RTK0EMA6L0C00000BJ schematic		
Size	Document Number	Rev
A4	R12TU0272EJ0100	1.00
Date:	Wednesday, January 29, 2025	Sheet 10 of 11
2		1

5

4

3

2

1

History

Rev.	Date	Page	Summary
1.00	2025/1/29	—	First edition

D

C

B

A

5

4

3

2

1

Title

RTK0EMA6LOC00000BJ schematic

SizeA3

Document NumberR12TU0272EJ0100

Date:Wednesday, January 29, 2025

Rev1.00

Sheet11 of 11