

RTK0EMA6LOC00000BJ

schematic

- 01 : Contents
- 02 : MCU(1/2)
- 03 : MCU(2/2)
- 04 : Inverter Connector
- 05 : HALL/ENC
- 06 : I/F Connector
- 07 : JLOB
- 08 : Ether CAT
- 09 : SDHI
- 10 : USB
- 11 : History

Supplementary explanation :

DNF: unmounted part

Access point : <horizontal, vertical, page>

Ex.

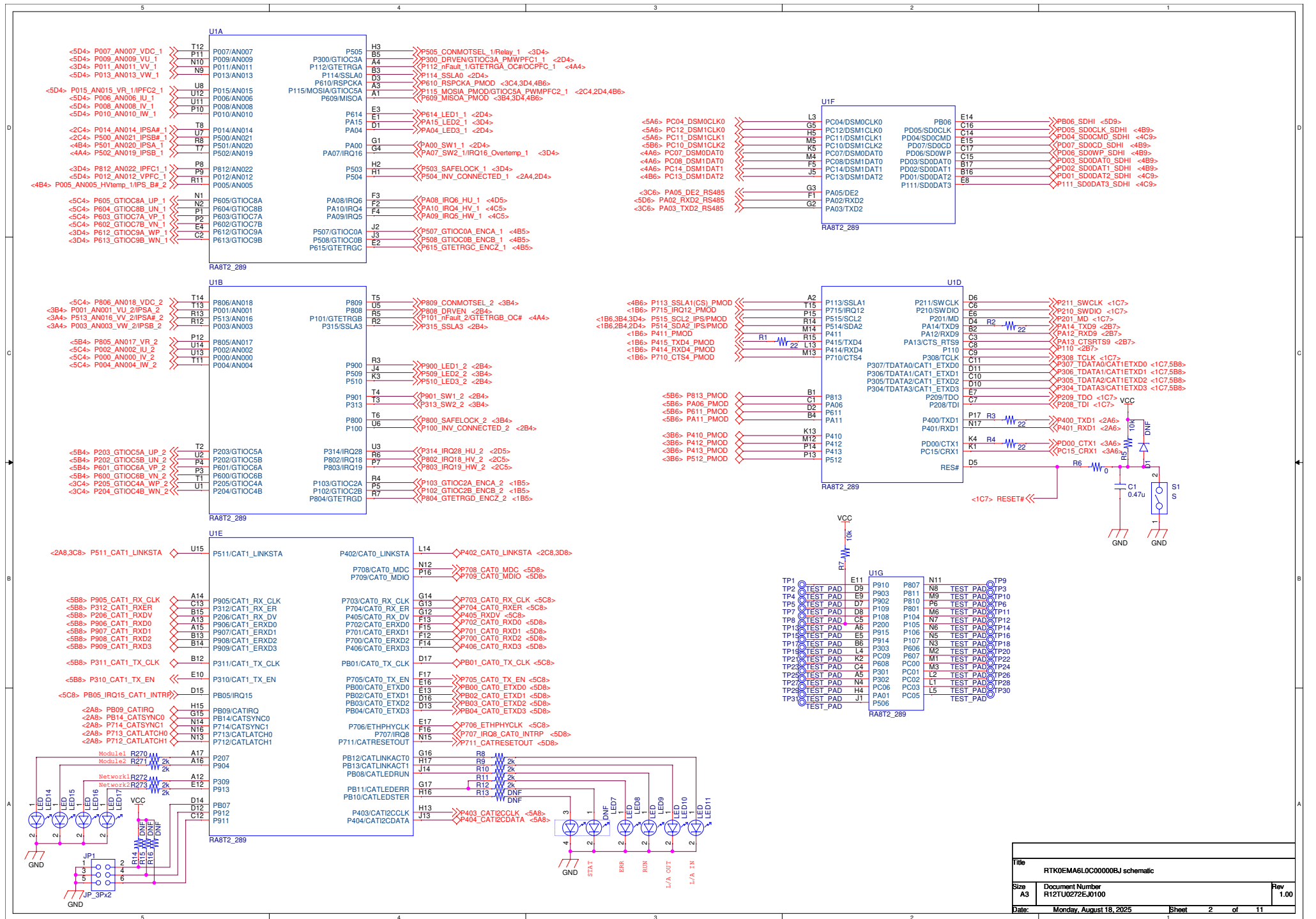
< 4 C 3 >

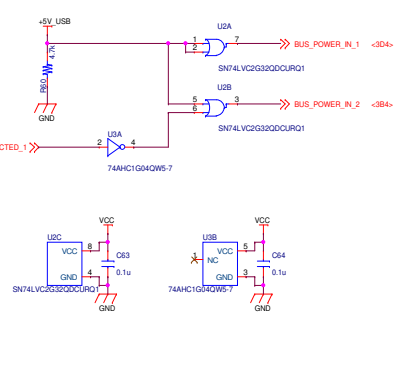
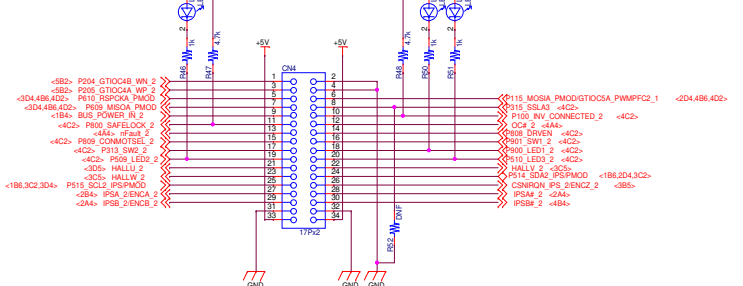
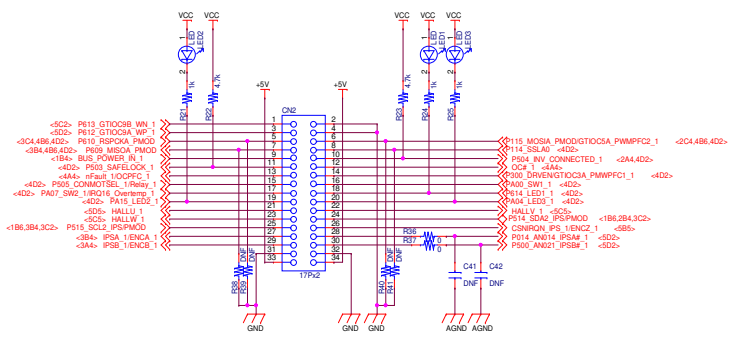
page

vertical

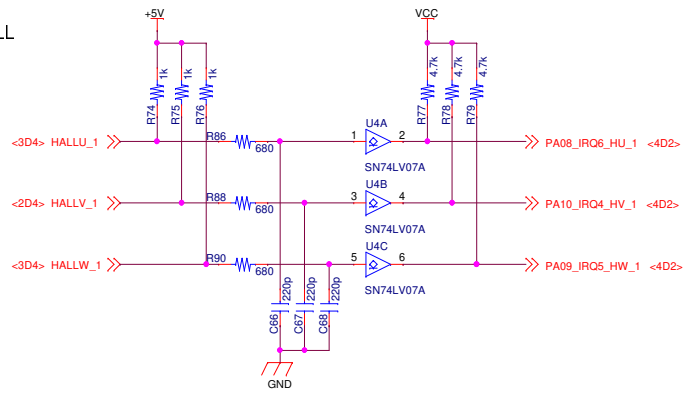
horizontal

Title		
RTK0EMA6LOC00000BJ schematic		
Size	Document Number	Rev
A3	R12TU0272EJ0100	1.00
Date:	Monday, August 18, 2025	Sheet 1 of 11

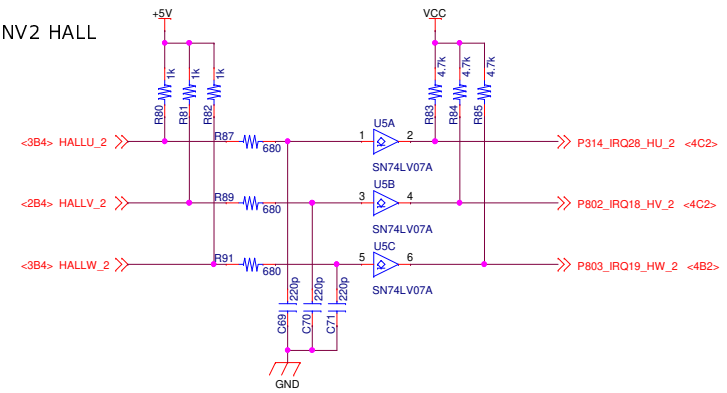




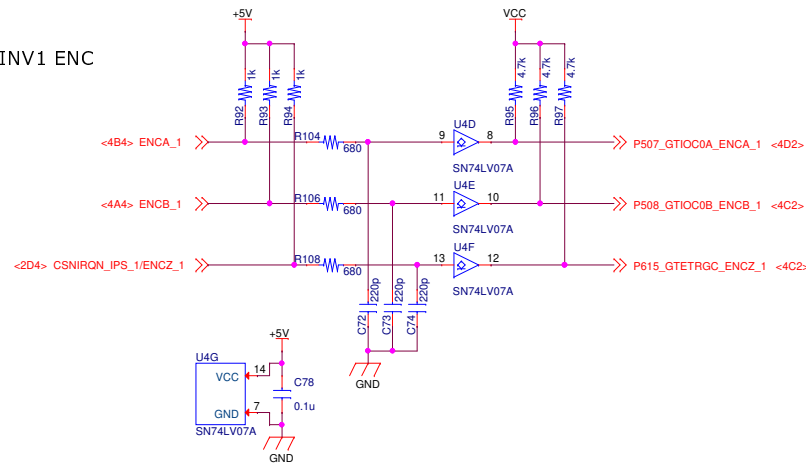
INV1 HALL



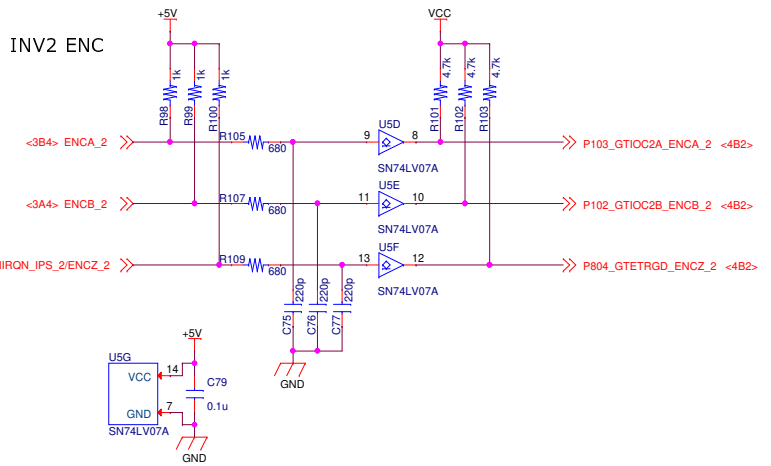
INV2 HALL



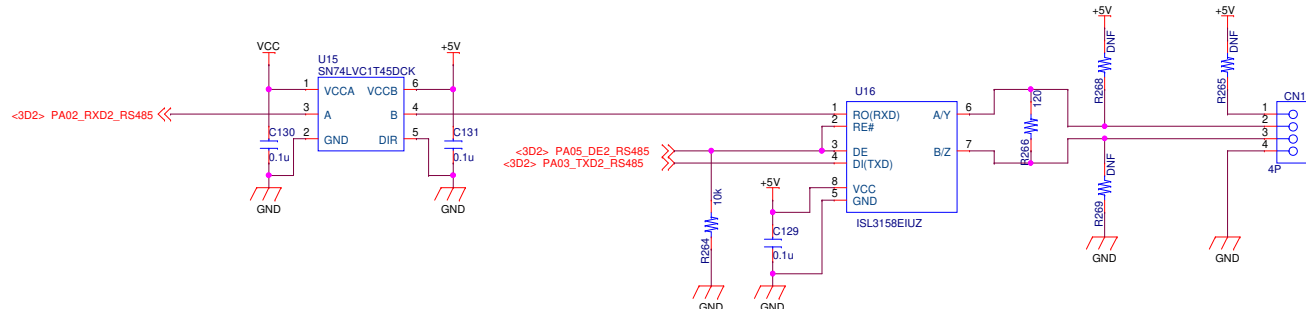
INV1 ENC



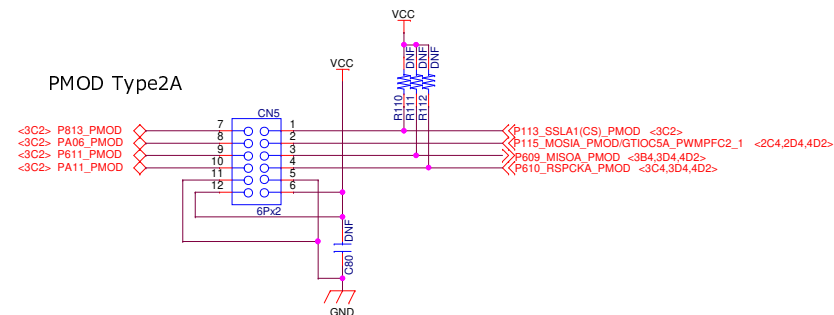
INV2 ENC



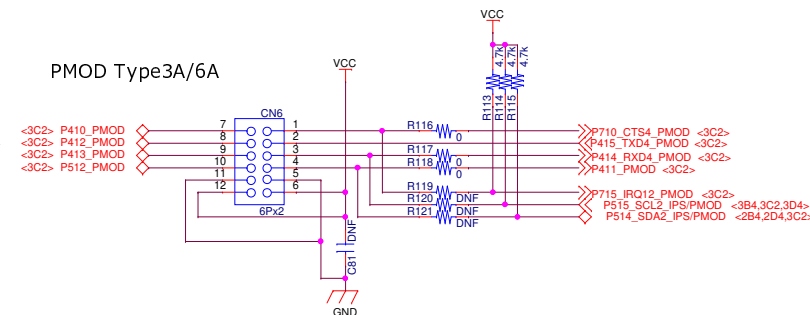
RS-485



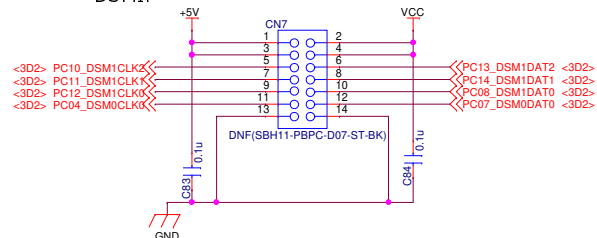
PMOD Type2A



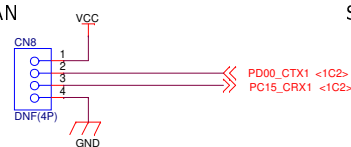
PMOD Type3A/6A



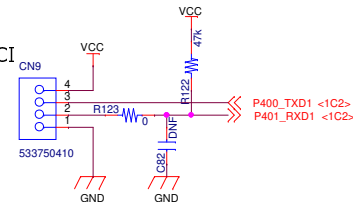
DSMIF



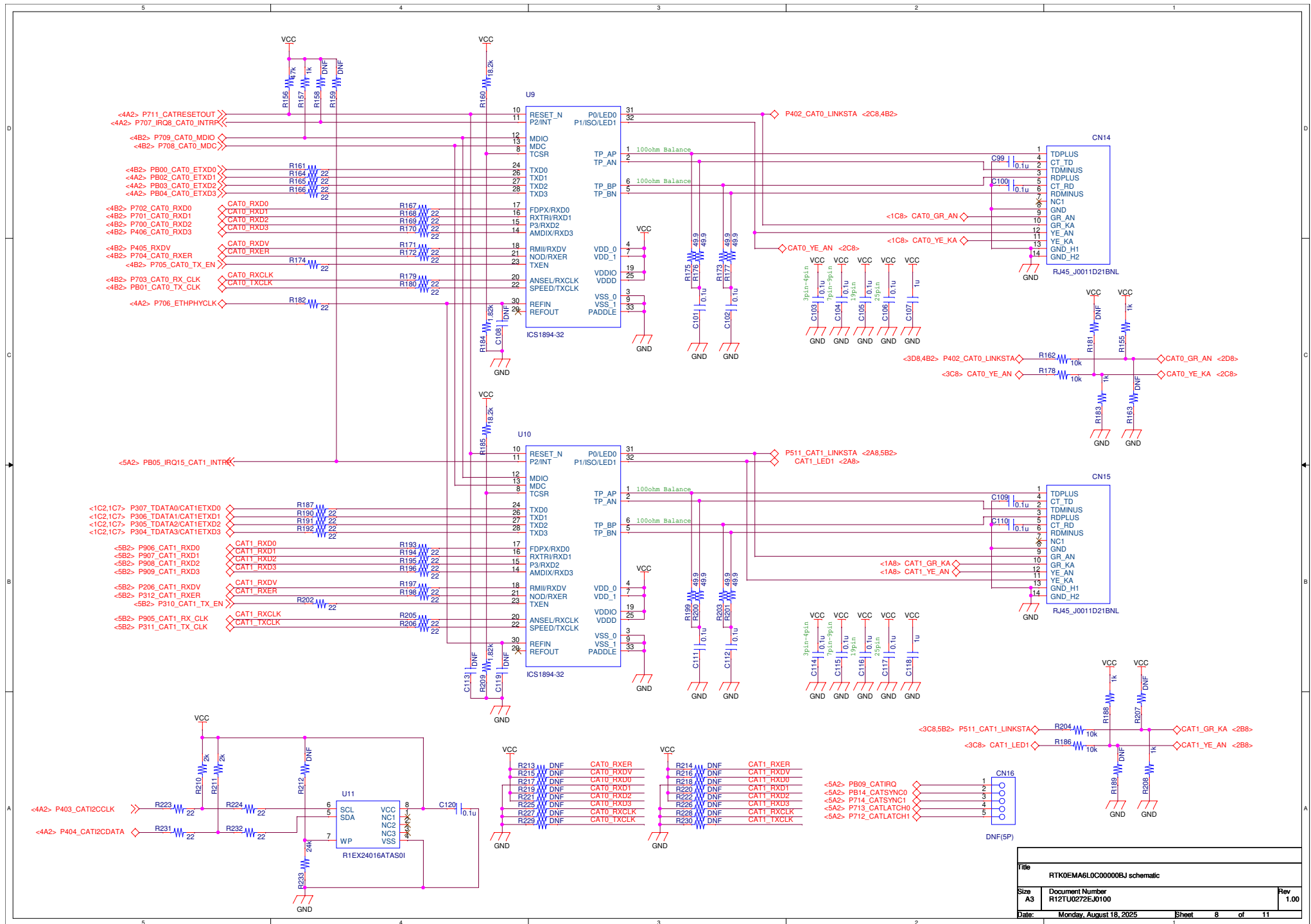
CAN

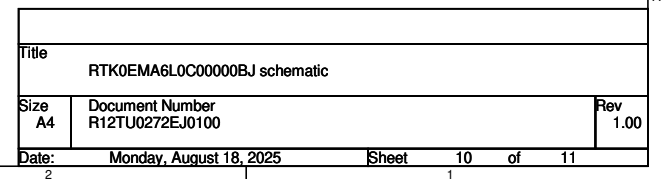


SCI



Title		
RTK0EMA6LOC00000BJ schematic		
Size	Document Number	Rev
A3	R12TU0272EJ0100	1.00
Date:	Monday, August 18, 2025	Sheet 6 of 11





5

4

3

2

1

History

Rev.	Date	Page	Summary
1.00	2025/8/18	—	First edition

D

C

B

A

5

4

3

2

1

Title

RTK0EMA6LOC00000BJ schematic

SizeA3

Document NumberR12TU0272EJ0100

Date:Monday, August 18, 2025

Rev1.00

Sheet11 of 11