

# RC38312A\_FC3W\_Apps\_BGA100\_REVD



Renesas  
1140 West Warner Rd.  
Tempe, AZ 85284

Title: RC38312A_FC3W_Apps_BGA100_REVC			
Size B	HW Number: HW10169	Engineer: Ming Lim	Rev. D
	Date: 10/16/2024	Sheet: 1 of 5	

REV.	DESCRIPTION	DATE	ENGINEER
A	Modify from Validation board	6/21/2023	Ming Lim
B	Silkscreen changes to match RC38x08	05/30/2024	Ming Lim
C	-----	8/2024	Ming Lim
D	Meke the GND pins are visible on the FC3W symbol	10/2024	Kapilan R

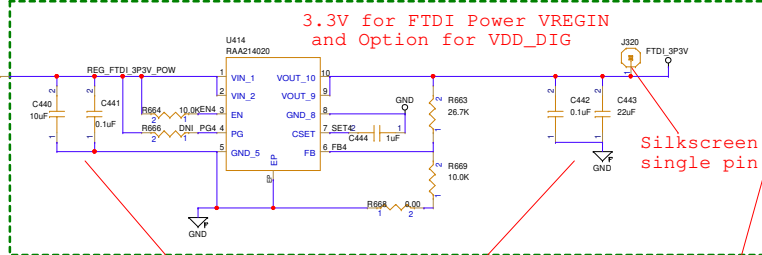
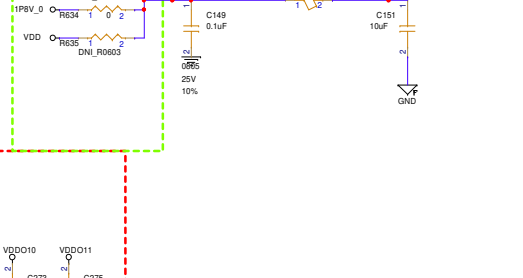
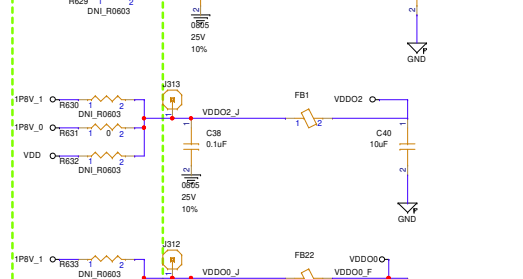
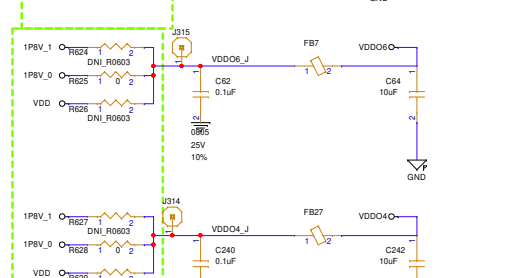
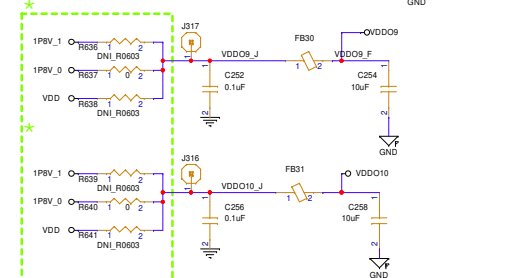
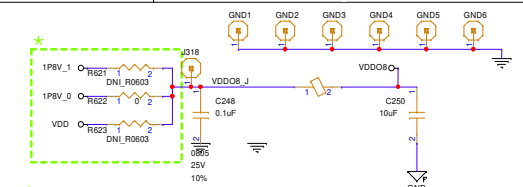
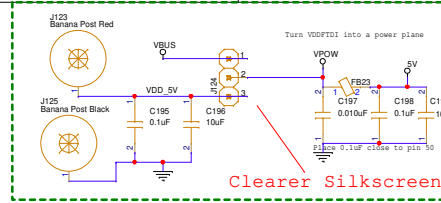
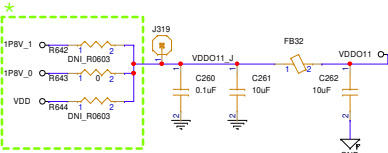
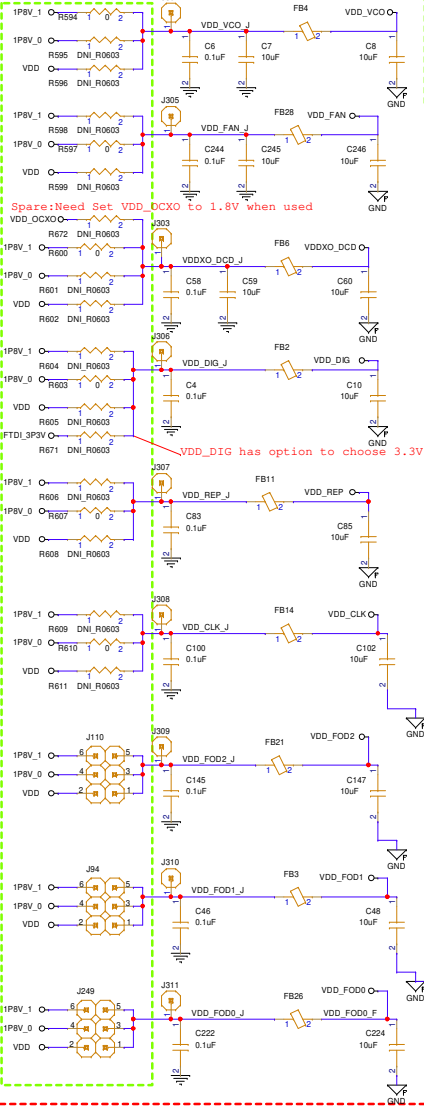


Renesas  
1140 West Warner Rd.  
Tempe, AZ 85284

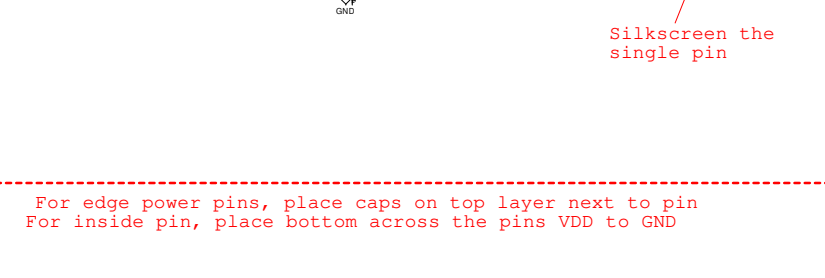
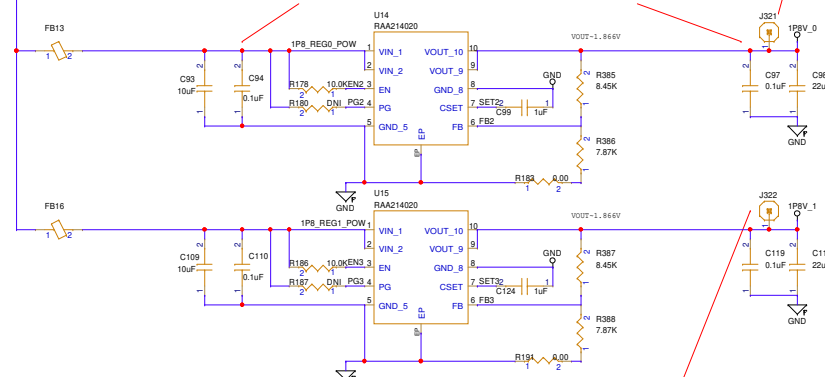
Title: RC38312A_FC3W_Apps_BGA100_REVC			
Size B	HW Number: HW10169	Engineer: Ming Lim	Rev. C
	Date: 10/16/2024	Sheet: 2 of 5	



Layout Note: replace the jumper in the previous rev with these resistors. Place these resistors at the same location as previous jumpers. Silkscreen the single pin DNI



Layout Note: Measure the LDO input Decoupling Cap away from Output Decoupling Cap to prevent Input short to Output.



For edge power pins, place caps on top layer next to pin  
For inside pin, place bottom across the pins VDD to GND

