

Renesas Solution Starter Kit for RX23E-B

Board Schematics

PAGE	DESCRIPTION
1	INDEX
2	Power Input
3	MCU Peripheral
4	Analog Input
5	Digital Interface
6	4-20mA Transmitter & AC Excitation

- Note:**
- C: Capacitor
D: Diode
F: Ferrite Bead
J: Pin Header
L: Inductor
Q: MOSFET
R: Fixed Resistor
U: Integrated Circuit
Y: Quartz Crystal Unit
Z: Zener Diode

CN: Connector
JA: MCU Pin Header and LCD Interface
JP: Jumper
RF: Resettable Fuse
SO: Solder Jumper (Default Open)
SS: Solder Jumper (Default Short)
SW: Switch
TH: Through Hole
TP: Test Point
VR: Potentiometer
LED: Light Emitting Diode
RTD: Resistance Temperature Detector
PMD: PMOD Connector

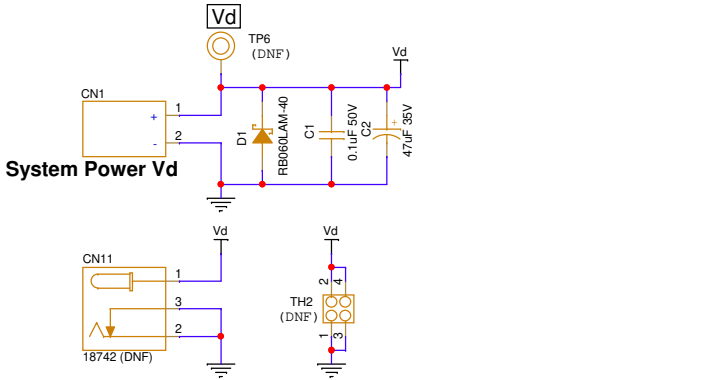
* "DNF" marking means that component is not fitted by default

Board Code:
RTK0ES1001C00001BJ: MP Board

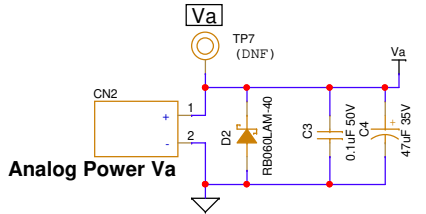
Digital Plane

Analog Plane

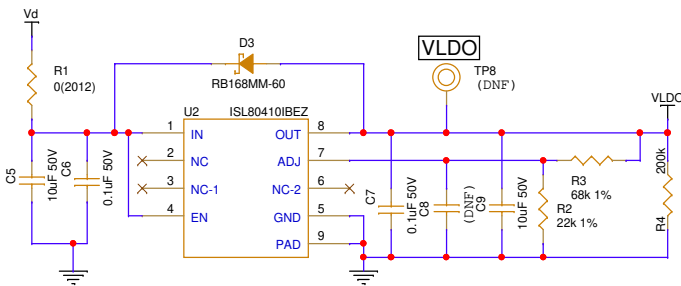
System Power Input Terminal Block



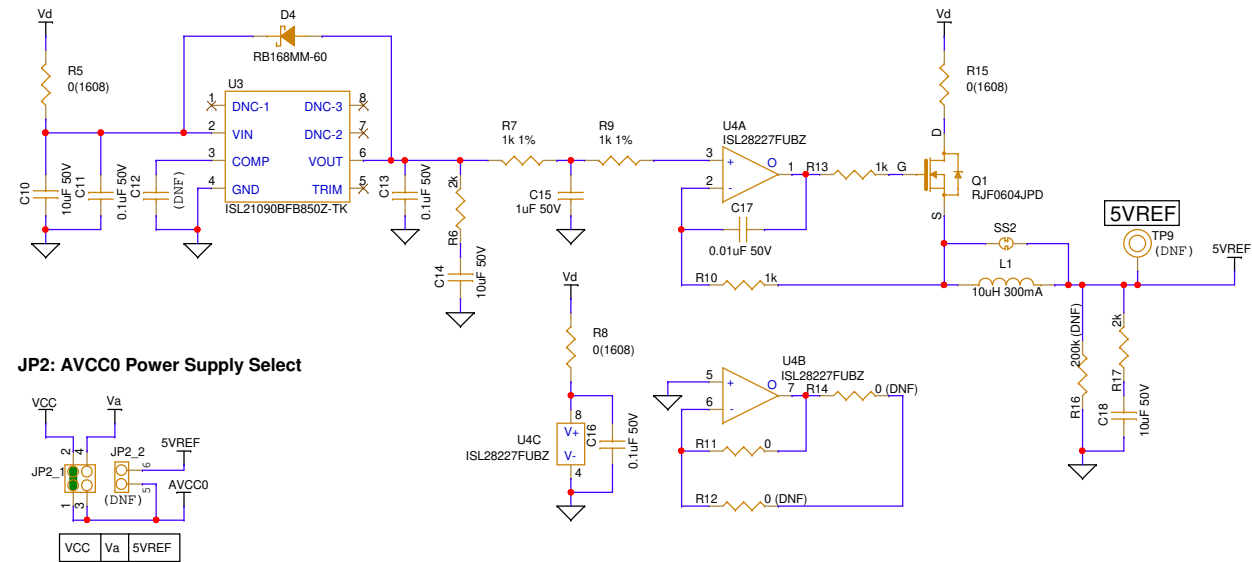
Analog Power Input Terminal Block



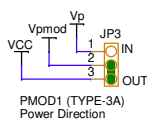
LDO ISL80410



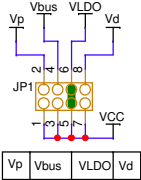
5V Reference ISL21090



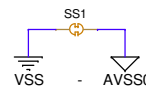
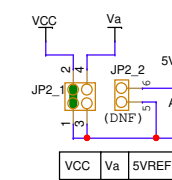
JP3: PMOD1(Type-3A) Power Direction Select



JP1: VCC Power Supply Select

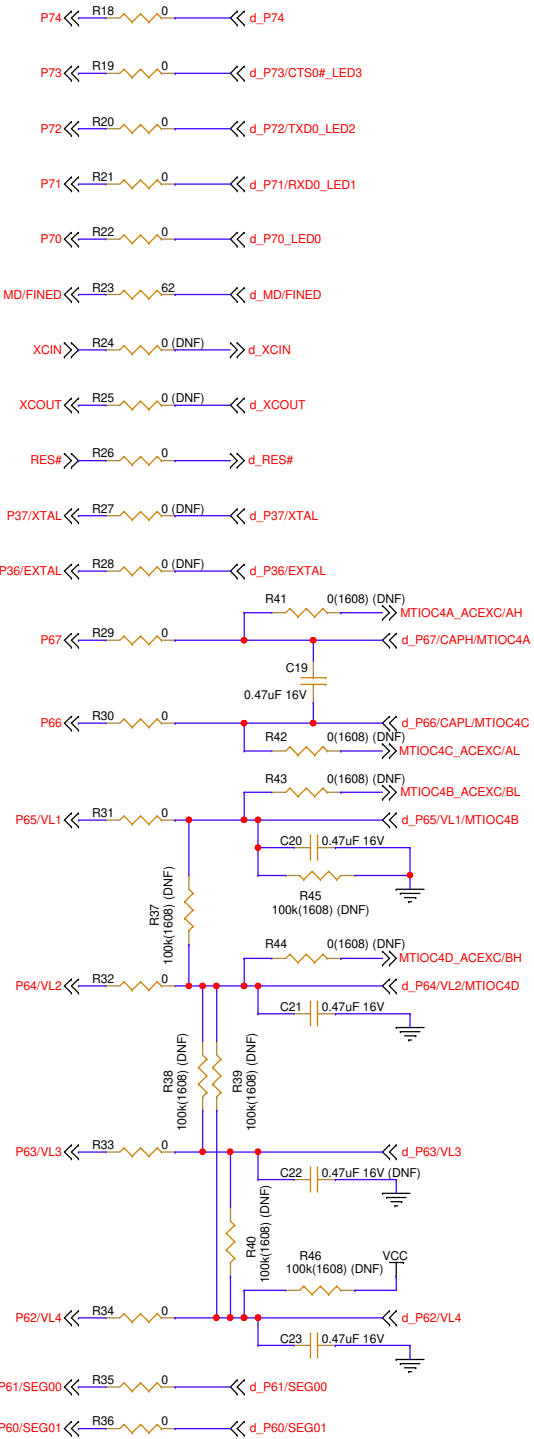


JP2: AVCC0 Power Supply Select

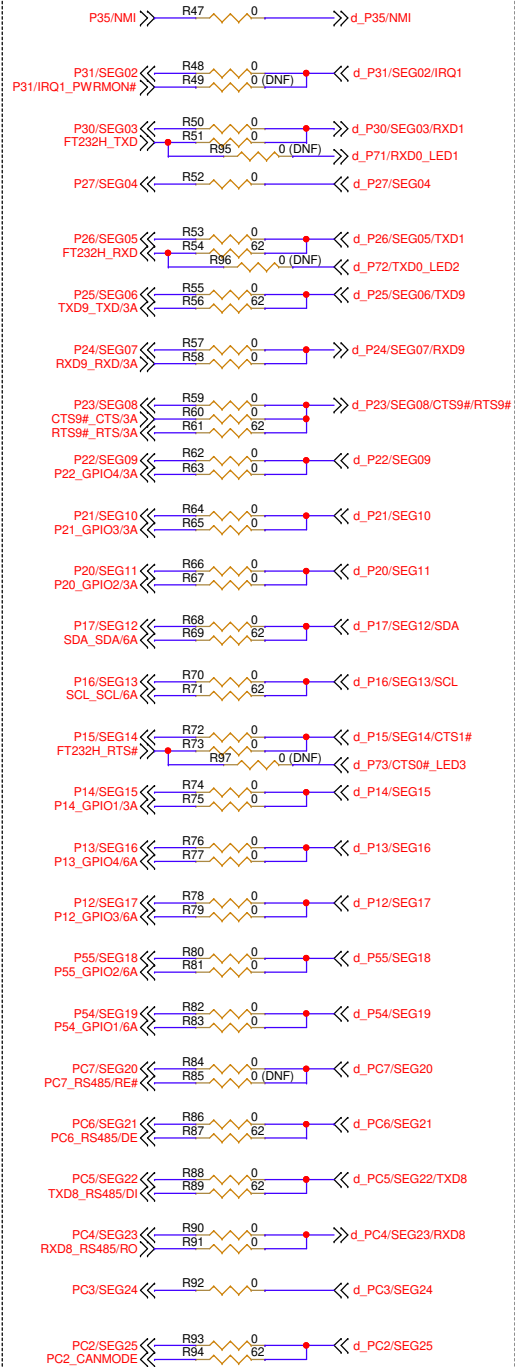


SS1: VSS and AVSS0 Connection Point

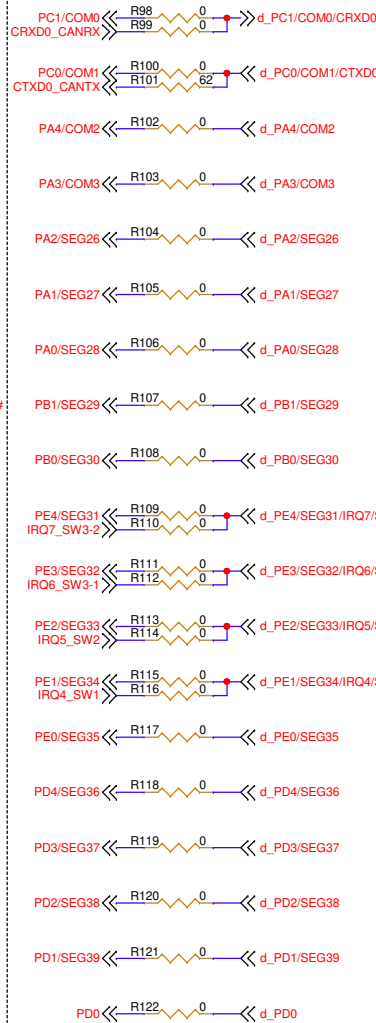
Digital Function Select Upper Side (4 - 25)



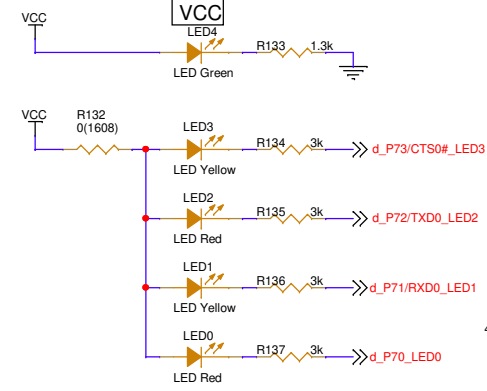
Left Side (26 - 50)



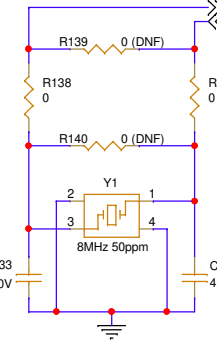
Lower Side (51 - 71)



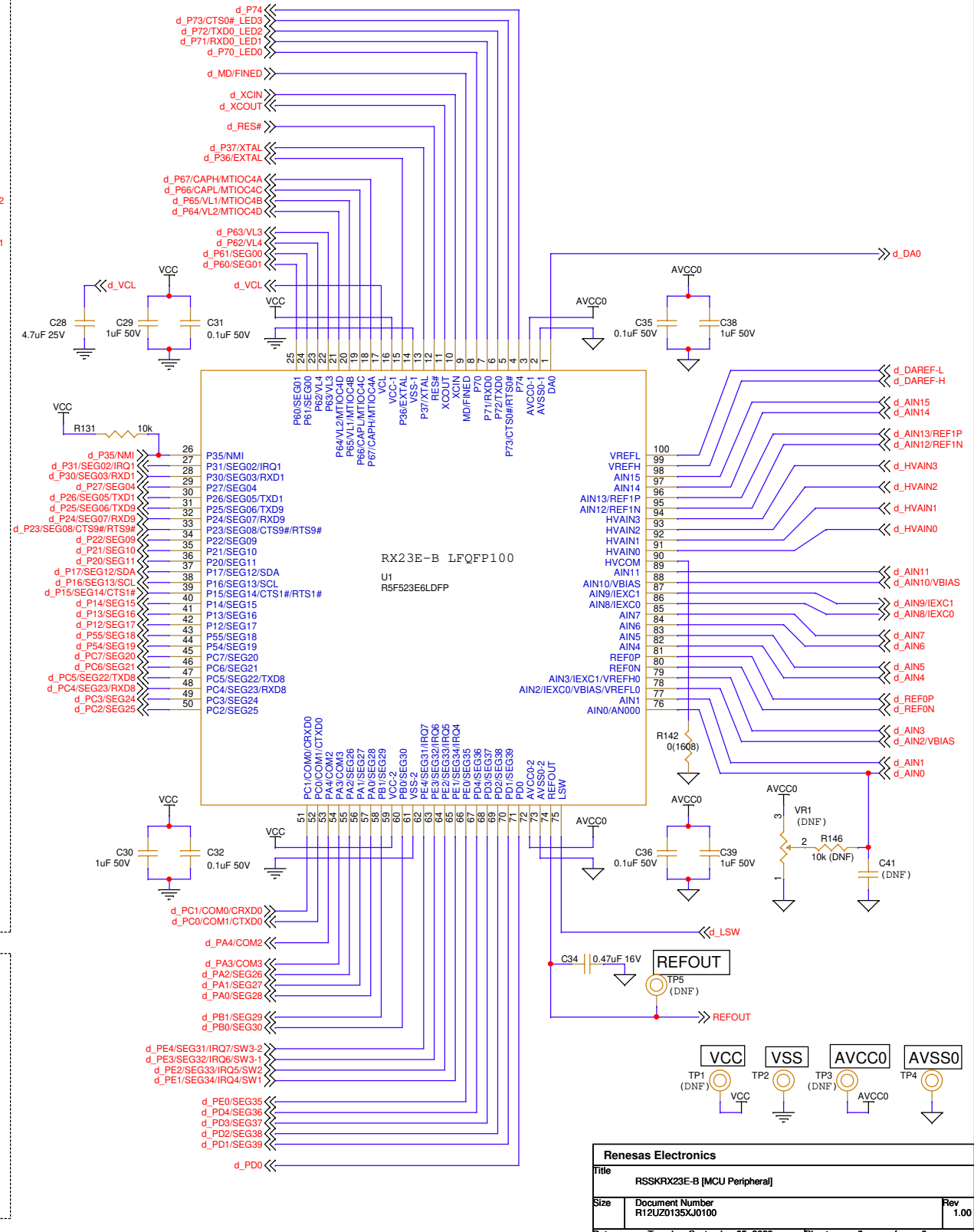
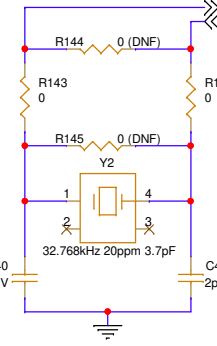
LEDs



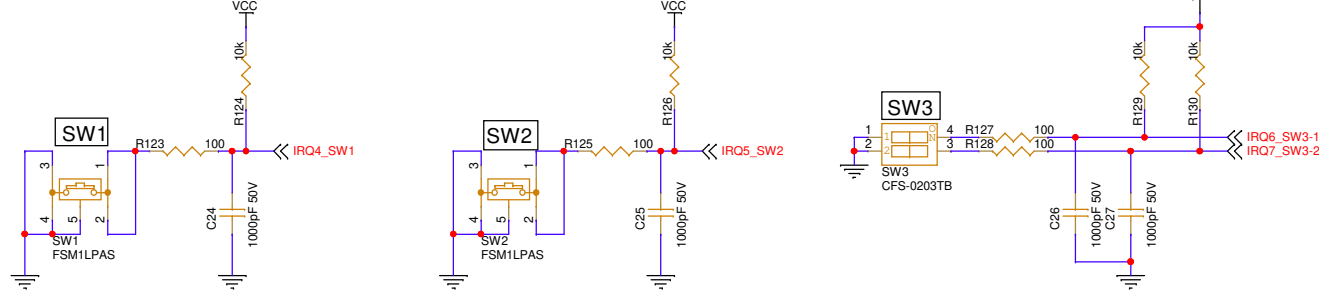
Y1: Main Clock



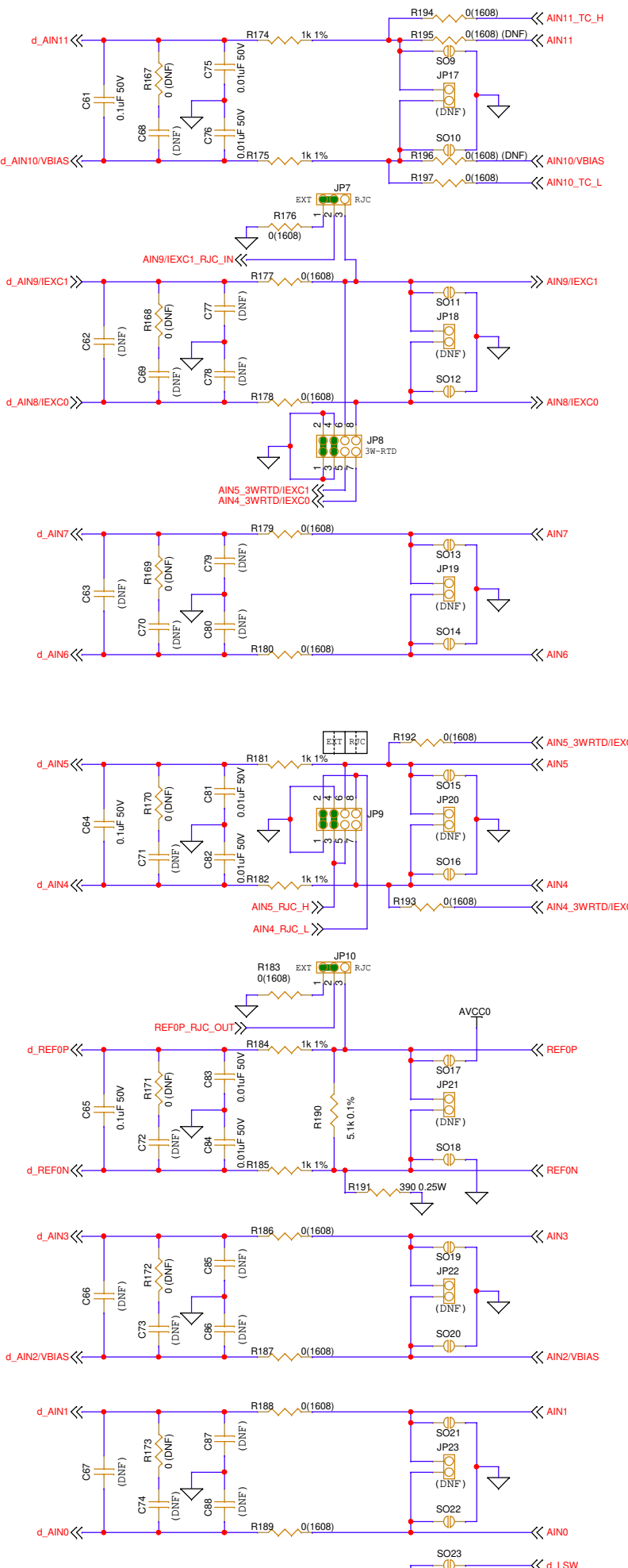
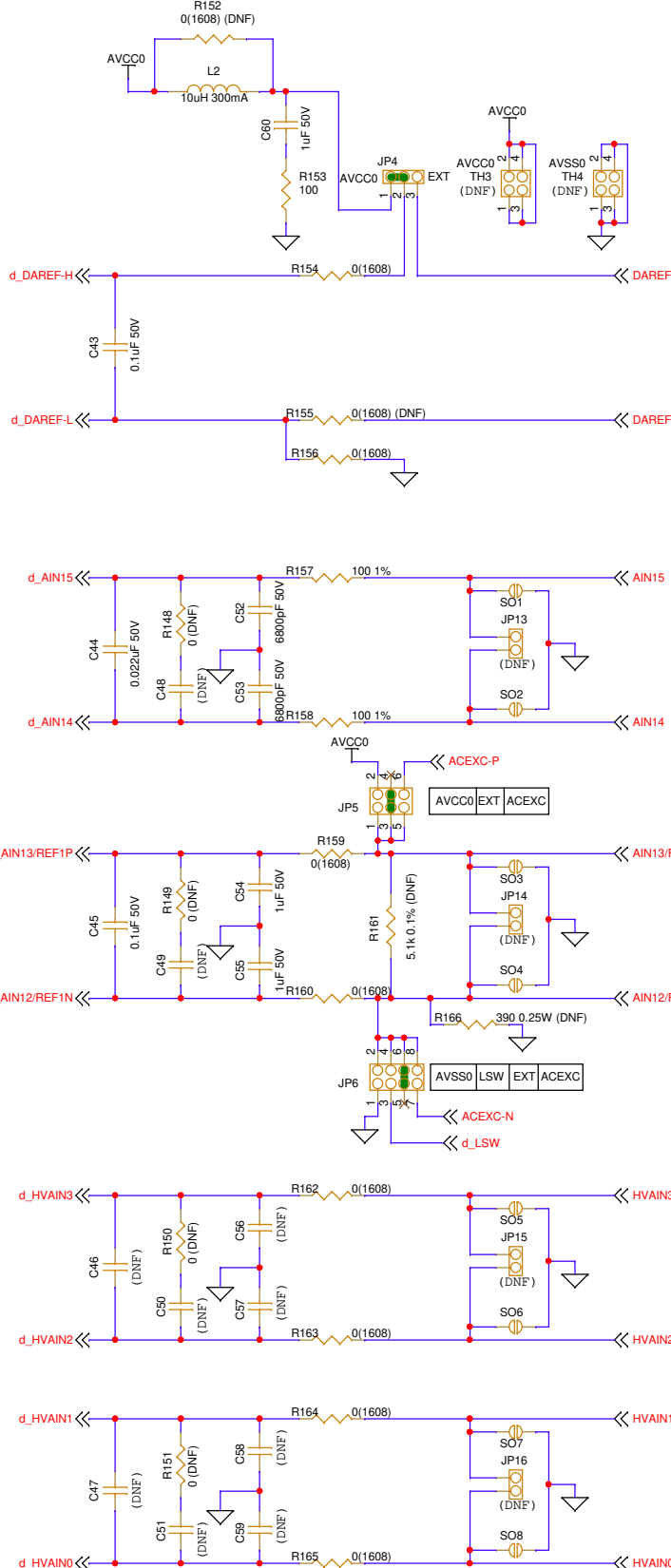
Y2: Sub Clock



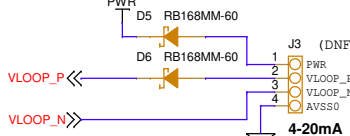
Switches



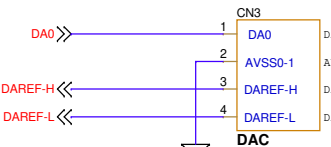
Analog Interface



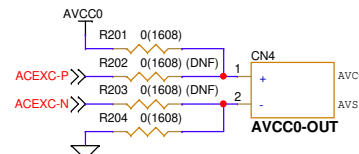
4-20mA I/O Pin Header



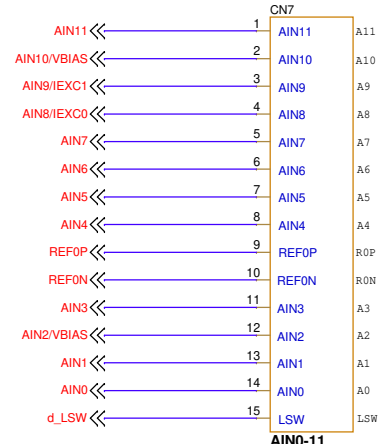
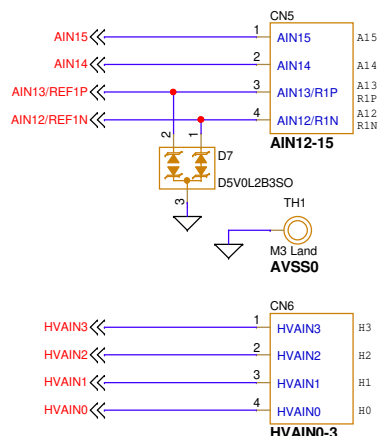
D/A Converter I/O Terminal Block



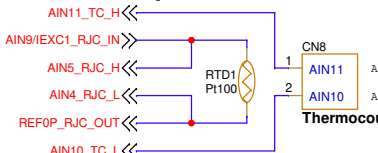
Analog Power Output Terminal Block



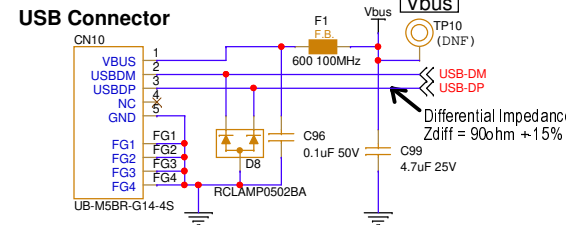
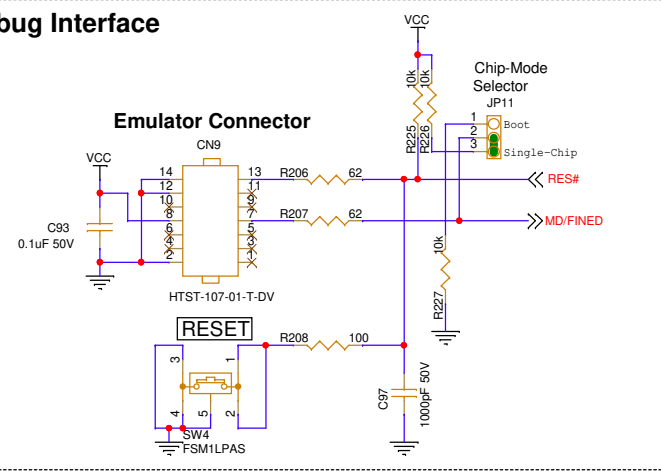
Analog Input Terminal Blocks



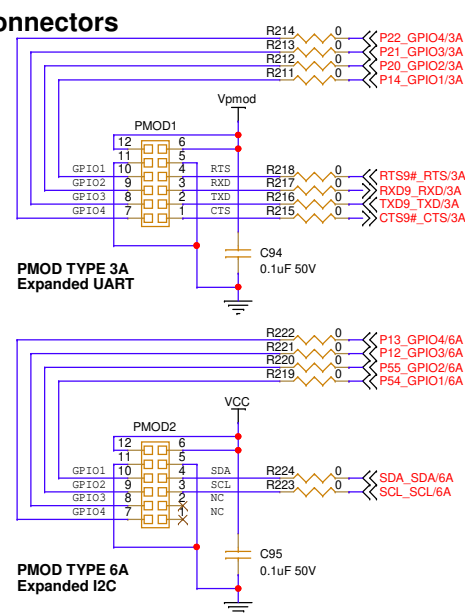
Thermocouple Connector



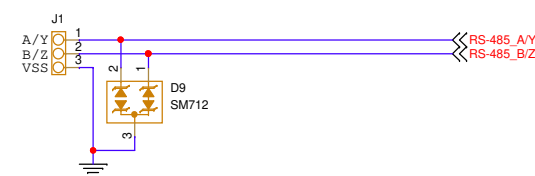
Debug Interface



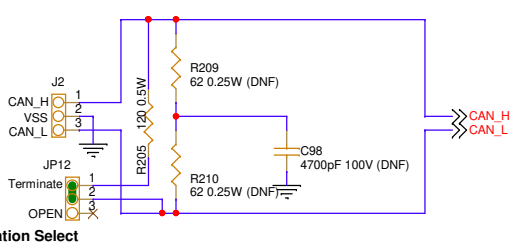
Pmod Connectors



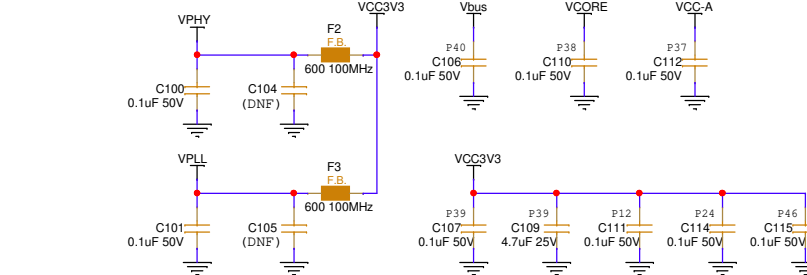
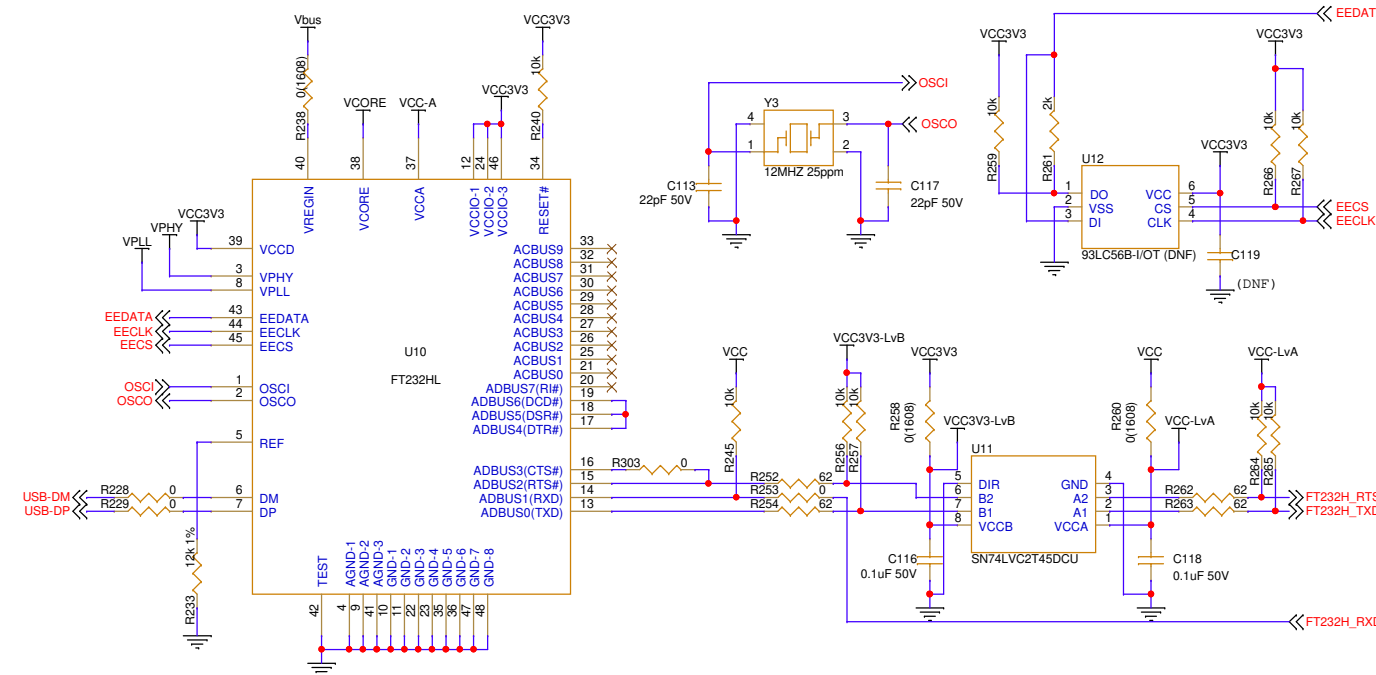
RS-485 Pin Header



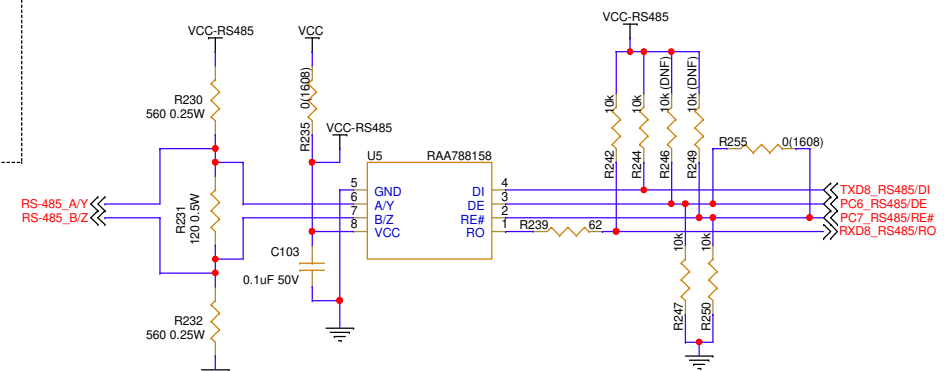
CAN Pin Header



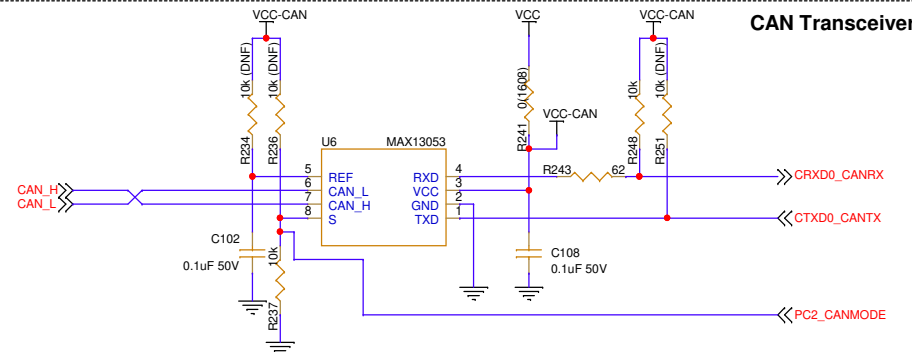
USB to Serial Interface



RS-485 Driver

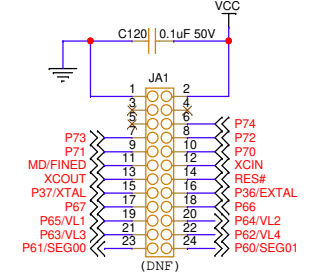


CAN Transceiver

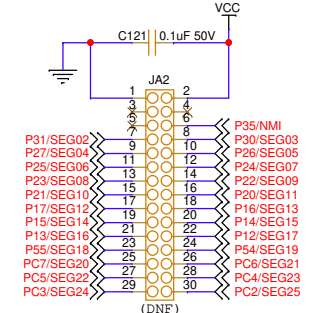


MCU Pin Headers

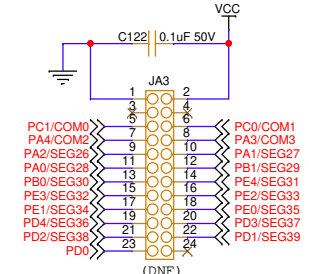
MCU Pin Header 1



MCU Pin Header 2

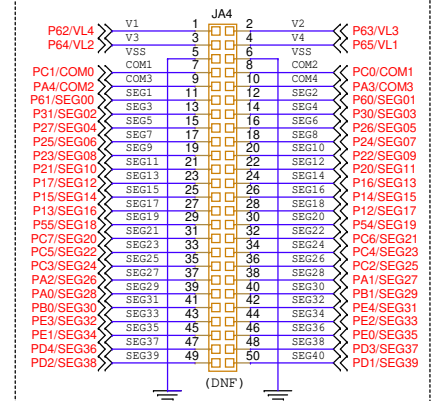


MCU Pin Header 3

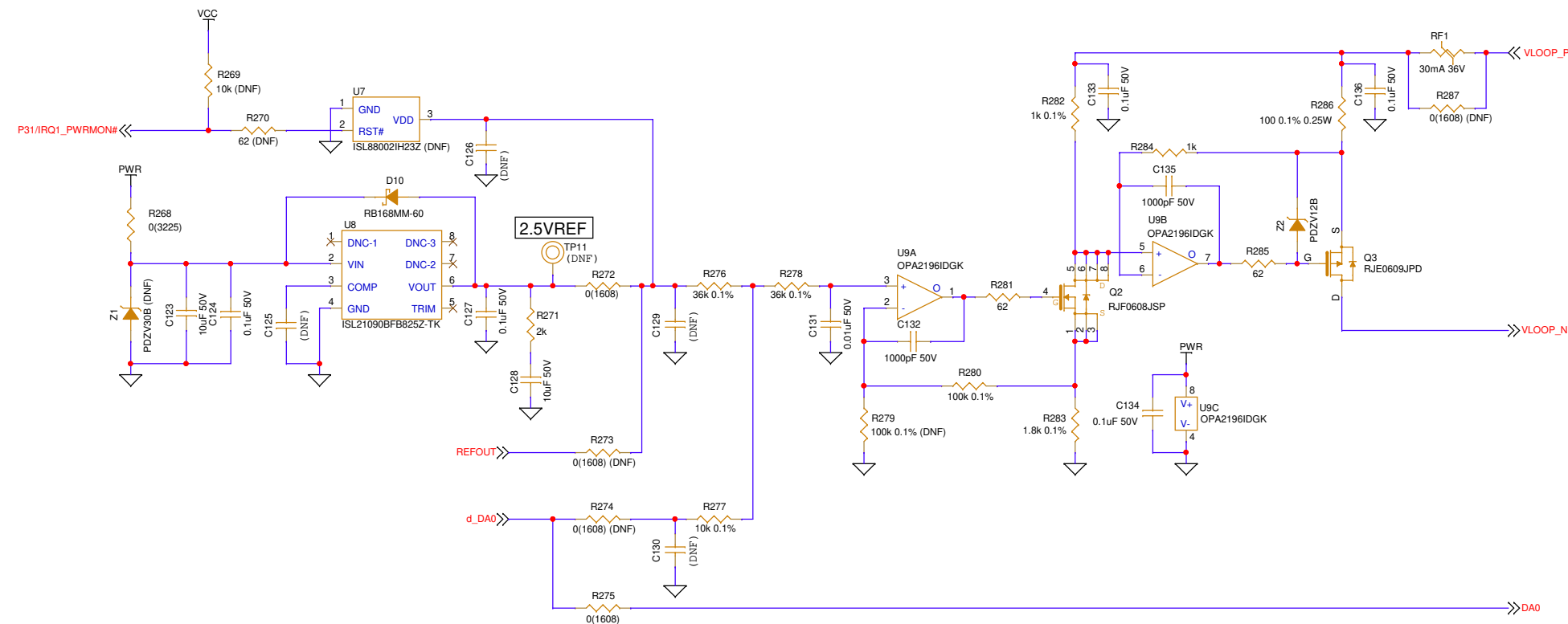


LCD Interface

LCD Connector



4-20mA Transmitter



AC Excitation Driver

