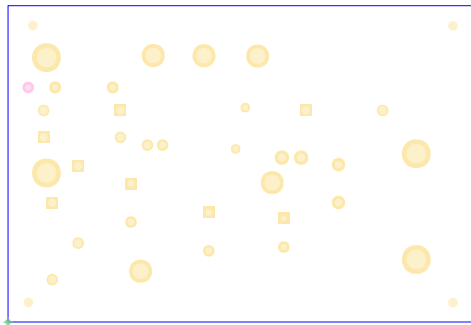


RTKA223011DE0000BU REV.C

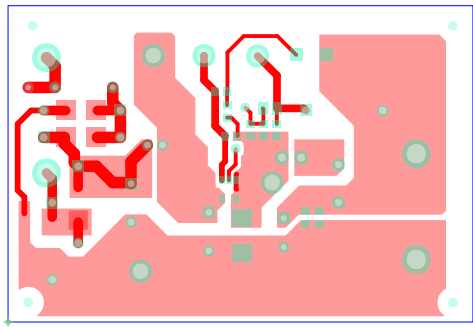


LAYER 1 (COMPONENT SIDE)

RENESAS

02-05-2020

RTKA223011DE0000BU REV.C

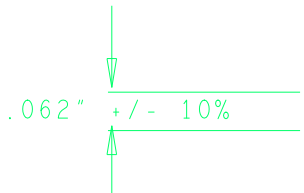
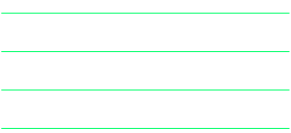


LAYER 2 (BOTTOM SIDE)

RENESAS

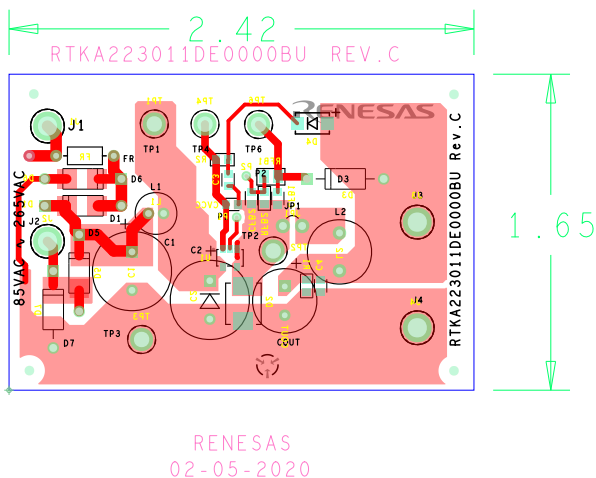
02-05-2020

PHYSICAL BOARD DIMENSIONS & LAYER STRUCTURE

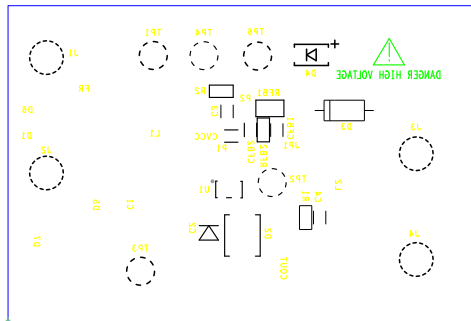
 .062" +/- 10%		SILK TOP	silkt.art
		SOLDER	bottom.art
		MASK BOTTOM	smaskb.art
		SILK BOTTOM	silkb.art

NOTES:

1. THIS BOARD IS RoHS COMPLIANT.
2. PRINTED WIRING BOARD DESIGN AND ACCEPTANCE CRITERIA SHALL BE IAW WITH THE REQUIREMENTS OF IPC-D-275 AND IPC-A-600.
3. MATERIAL: FR4 (RoHS COMPLIANT), 1 OZ COPPER BOTTOM SIDE ONLY.
4. APPLY SOLDER MASK, BOTTOM SIDE ONLY OVER BARE COPPER IAW IPC-SM-840. CLASS 2 (LPI) (BLUE MASK).
5. ALL PATTERNS ARE VIEWED FROM THE PRIMARY SIDE LOOKING THROUGH THE BOARD.
6. ALL THROUGH HOLES ARE UNPLATED. IGNORE PLATED NOTE IN DRILL CHART.
7. APPLY SILKSCREEN USING WHITE NON-CONDUCTIVE EPOXY BASED INK.
8. PWB MUST BE 100% ELECTRICALLY TESTED FOR SHORTS AND CONTINUITY. USE NETLIST PROVIDED RTKA223011DE0000BU_IPC356.IPC IAW IPC-D-356.
9. MARK DATE CODE AND MANUFACTURES IDENTIFICATION ON SOLDER SIDE PER IPC-6011 AND IPC-6012.
10. TOLERANCE ON ALL DRILL HOLES SHALL BE IAW IPC-D-2221 & 2222 UNLESS OTHERWISE SPECIFIED.



RTKA223011DE0000BU REV.C



SILKSCREEN BOTTOM

RENESAS
02-05-2020

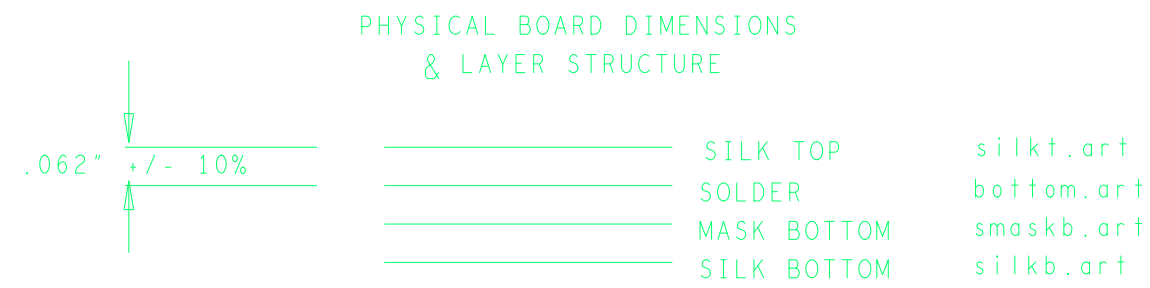
RTKA223011DE0000BU REV.C



PASTEMASK TOP

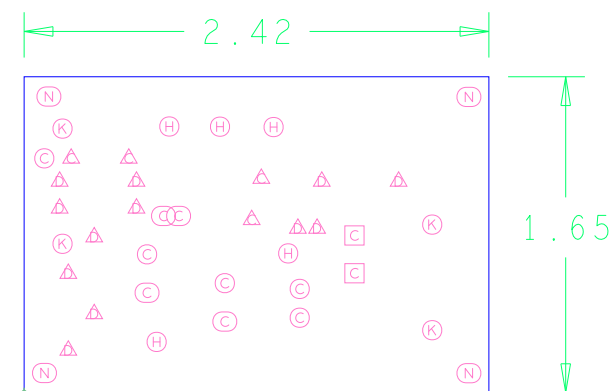
RENESAS

02-05-2020




NOTES:

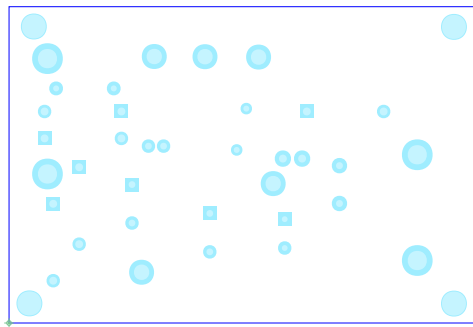
1. THIS BOARD IS RoHS COMPLIANT.
2. PRINTED WIRING BOARD DESIGN AND ACCEPTANCE CRITERIA SHALL BE IAW WITH THE REQUIREMENTS OF IPC-D-275 AND IPC-A-600.
3. MATERIAL: FR4 (RoHS COMPLIANT), 1 OZ COPPER BOTTOM SIDE ONLY.
4. APPLY SOLDER MASK, BOTTOM SIDE ONLY OVER BARE COPPER IAW IPC-SM-840. CLASS 2 (LPI) (BLUE MASK).
5. ALL PATTERNS ARE VIEWED FROM THE PRIMARY SIDE LOOKING THROUGH THE BOARD.
6. ALL THROUGH HOLES ARE UNPLATED. IGNORE PLATED NOTE IN DRILL CHART.
7. APPLY SILKSCREEN USING WHITE NON-CONDUCTIVE EPOXY BASED INK.
8. PWB MUST BE 100% ELECTRICALLY TESTED FOR SHORTS AND CONTINUITY. USE NETLIST PROVIDED RTKA223011DE0000BU_IPC356.IPC IAW IPC-D-356.
9. MARK DATE CODE AND MANUFACTURES IDENIFICATION ON SOLDER SIDE PER IPC-6011 AND IPC-6012.
10. TOLERANCE ON ALL DRILL HOLES SHALL BE IAW IPC-D-2221 & 2222 UNLESS OTHERWISE SPECIFIED.



DRILL CHART: TOP to BOTTOM			
ALL UNITS ARE IN MILS			
FIGURE	SIZE	PLATED	QTY
⊙	30.0	PLATED	3
△	31.0	PLATED	4
⊙	35.0	PLATED	2
⊙	35.0	PLATED	4
□	36.0	PLATED	2
△	41.0	PLATED	12
⊕	80.0	PLATED	5
⊗	100.0	PLATED	4
Ⓝ	125.0	NON-PLATED	4

Drawn By:	Date Drawn:	Engineer:		
Amnat Yakamna	04/14/2020	Julian Zhu		
Released By:	Date Released:	RAA223011 EVALUATION BOARD		
Updated By:	Date Updated:			
	MASK#		HDWR ID	REV. C
	FILENAME:			SHEET
	RAA223011\RTKA223011DE0000BU			1 OF 1

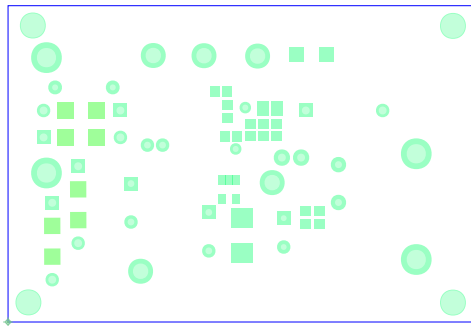
RTKA223011DE0000BU REV.C



SOLDERMASK TOP

RENESAS
02-05-2020

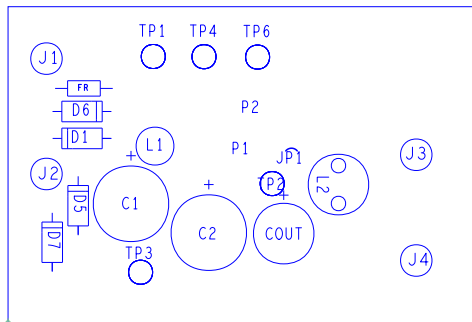
RTKA223011DE0000BU REV.C



SOLDERMASK BOTTOM

RENESAS
02-05-2020

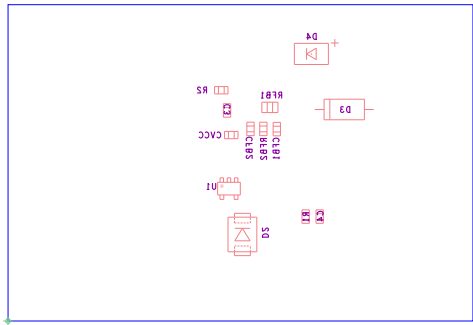
RTKA223011DE0000BU REV.C



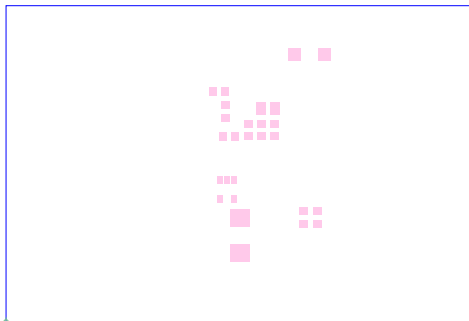
ASSEMBLY TOP

RENESAS
02-05-2020

ASSEMBLY BOTTOM
RENESAS
02-05-2020



RTKA223011DE0000BU REV.C



PASTEMASK BOTTOM

RENESAS

02-05-2020