

R9A02G0151

RTK-G015-EPRSinkCharger Instructions

Introduction

The RTK-G015-EPRSinkCharger is a Universal Serial Bus Power Delivery (USB PD) evaluation board that supports 2 to 7 battery cells in series configuration. The RTK-G015-EPRSinkCharger is designed with 48V USB-C Port Controller (SPR/EPR TCPC) RAA489400, USB-C Port Manager (TCPM) R9A02G0151, and On-Board Charger RAA489118. There are two types of RTK-G015-EPRSinkCharger: one supports up to 28V/140W USB Type-C® EPR input and the other will support up to 48V/240W USB Type-C® EPR input with 48V 3-Level Buck Pre-Regulator (RAA489300). This document is the instruction manual for the RTK-G015-EPRSinkCharger.

The RTK-G015-EPRSinkCharger supports USB PD 2.0, USB PD 3.1, and USB Type-C® Specification. The RTK-G015-EPRSinkCharger works as a USB Type-C® EPR power sink charger or an EPR power bank. The RTK-G015-EPRSinkCharger does not have a battery protection circuit on the board, so, Renesas strongly recommends using a battery module with Renesas' Battery Management System to avoid over-discharging under the power bank mode. The RTK-G015-EPRSinkCharger may be combined with an Evaluation Module of the Battery Fuel Gauging IC (FGIC) RAJ2400100 with Filefish to realize a complete Battery Management System (BMS).

The configuration switches enable the selection of the number of battery cells, the maximum charge current and the operating mode.

VIDWriter 1.2.2.0 applies to the RTK-G015-EPRSinkCharger.

Target Devices

140W USB Type-C® Charger or MAX 140W Power Bank: RTK-G015-EPRSinkCharger-140W

48V USB-C Port Controller (SPR/EPR TCPC): RAA489400

USB-C Port Manager (TCPM): R9A02G0151

On-Board Charger: RAA489118

240W USB Type-C® Charger or MAX 140W Power Bank: RTK-G015-EPRSinkCharger-240W

48V USB-C Port Controller (SPR/EPR TCPC): RAA489400

USB-C Port Manager (TCPM): R9A02G0151

48V 3-Level Buck Pre-Regulator: RAA489300

On-Board Charger: RAA489118

Evaluation Module of Battery Fuel Gauging IC (FGIC) with Filefish: RAJ240100 Filefish EVM

Battery Fuel Gauging IC: RAJ240100

Target VIDWriter: VIDWriter 1.2.2.0 (Version 1.2.2.0)

Part Number

RTK-G015-EPRSinkCharger-140W (Up to 28V/140W USB Type-C® input): RTKA489EPRDE0010BU

RTK-G015-EPRSinkCharger-240W (Up to 48V/240W USB Type-C® input): RTKA489EPRDE0000BU

RAJ240100 Filefish EVM: RTK0EF0136D0000XBX

Related Document

Use this document in combination with the following documents.

The related documents mentioned in this publication may include preliminary versions. However, preliminary versions are not marked as such.

- RAA489400 Data Sheet: R16DS0292EU
- R9A02G0151 Data Sheet: R19DS0101EJ
- E1 Emulator E20 Emulator User's Manual: R20UT0398EJ
- E2 Emulator Lite User's Manual: R20UT3240EJ
- E1/E20 Emulator, E2 Emulator Lite Additional Document for User's Manual (Notes on Connection of RL78): R20UT1994EJ
- Renesas Flash Programmer V3.13 Flash memory programming software User's Manual: R20UT5312EJ
- USB Power Delivery Controller VIDWriter 1.2.2.0 Instruction Manual: R19AN0297EJ

- RAA489118 Short-Form Data Sheet: R16DO0024EU
- RAA489300 Short-Form Data Sheet: R16DO0019EU

- RAJ240100 Data Sheet: R01DS0301EJ
- RAJ240100 Filefish User's Manual: R01AN6763EJ

Contents

1. Features	5
1.1 Block Diagram	6
1.2 Component	7
1.2.1 Component layout	7
1.2.2 Component information	9
1.3 Function assignment for RAA489400 on RTK-G015-EPRSinkCharger	10
1.4 Function assignment for R9A02G0151 on RTK-G015-EPRSinkCharger	11
1.5 Function assignment for RAA489118 on RTK-G015-EPRSinkCharger	12
2. Function.....	13
2.1 Battery Configuration.....	13
2.2 Charging Current Limits	15
2.3 Operating Mode Selection.....	16
2.3.1 Sinking mode.....	16
2.3.2 Sourcing mode	17
3. Board setup and usage.....	19
3.1 Required materials to use this board.....	19
3.2 How to connect battery module.....	19
3.2.1 How to charge battery module with the standard charger parameters ("Board" mode) without Renesas BMS interface when connected to a source device.....	19
3.2.2 How to charge battery module with the custom charger parameters ("Manual" mode) without Renesas BMS interface when connected to a source device.....	20
3.2.3 How to charge battery module with Renesas BMS interface when connected to a source device....	20
3.2.4 Power Bank mode setting	21
3.3 Battery module with Renesas BMS interface.....	22
3.3.1 RAJ240100 Filefish EVM Connection	22
3.3.2 RAJ240100 Filefish EVM	23
3.4 Firmware writing to the R9A02G0151 on RTK-G015-EPRSinkCharger	24
3.4.1 FW generation	24
3.4.1.1 Operating Environment	24
3.4.1.2 Setup the VIDWriter	24
3.4.1.3 Run VIDWriter to generate ROM Image File.....	25
3.4.2 Outline of flash memory writing	30
3.4.2.1 On-board programming	30
3.4.3 FW writing with Renesas on-chip debugging emulator	31
4. Optional features	35
4.1 Supports USB peripheral function	35
4.2 Supports SMBus Slave Interface	35

FIGURES

Figure 1-1 RTK-G015-EPRSinkCharger-140W block diagram (RTKA489EPRDE0010BU: 28V EPR mode) .	6
Figure 1-2 RTK-G015-EPRSinkCharger-240W block diagram (RTKA489EPRDE0000BU: 48V EPR mode) .	6
Figure 1-3 Highlighted main parts on the RTK-G015-EPRSinkCharger-140W board a. TOP side	7
Figure 1-4 Highlighted main parts on the RTK-G015-EPRSinkCharger-240W board a. TOP side	8
Figure 2-1 The substitute circuit for output voltage or current.....	15
Figure 3-1 Power Indicator for Sink mode	19
Figure 3-2 Error Indication	20
Figure 3-3 Connector for Power Bank mode setting	21
Figure 3-4 Power Indicator for Source mode.....	21
Figure 3-5 RTK-G015-EPRSinkCharger Connector to BMS EVB and Pin Assign	22
Figure 3-6 RAJ240100 Filefish EVM	23
Figure 3-7 Main window for VIDWriter 1.2.2.0.....	25
Figure 3-8 Main window for VIDWriter 1.2.2.0 after Product Configuration	26
Figure 3-9 The Field E and the EVB setting vs “Board” configuration	27
Figure 3-10 The Field E and the EVB setting vs “BMS” configuration	27
Figure 3-11 The Field E and the EVB setting vs “Manual” configuration	28
Figure 3-12 Main window for VIDWriter 1.2.2.0 when press Schematic Setting.....	29
Figure 3-13 Board connection for programming by on-chip debugging emulator	31
Figure 4-1 Connector for USB2.0 based peripheral debugging	35
Figure 4-2 Connector for SMBus Slave Interface.....	35

TABLES

Table 1-1 The functions assigned to RAA489400 pins on RTK-G015-EPRSinkCharger	10
Table 1-2 The functions assigned to R9A02G0151 pins on RTK-G015-EPRSinkCharger.....	11
Table 1-3 The functions assigned to RAA489118 pins on RTK-G015-EPRSinkCharger	12
Table 2-1 Rotary switch setting value for Battery Configuration	13
Table 2-2 Battery Configuration vs MaxSysVol/MinSysVol for LiCoO ₂ and LiMn ₂ O ₄ battery in Standard FW13	
Table 2-3 Battery Configuration vs sample MaxSysVol/MinSysVol for LiFePO ₄ battery.....	14
Table 2-4 Resistor values for substitute circuit.....	14
Table 2-5 Rotary switch setting value for Charging Current Limits	15
Table 2-6 Resistors values for substitute circuit.....	16
Table 2-7 Rotary switch setting value for Operating Mode Selection	16
Table 2-8 The expected maximum Type-C sourcing PD Power for Sinking mode	17
Table 2-9 The supported maximum Type-C sourcing PD Power for Sourcing mode	18
Table 2-10 PDO list	18
Table 3-1 RTK-G015-EPRSinkCharger and Battery Module Filefish EVM signal	22
Table 3-2 Firmware writing method and available writing tool	30
Table 3-3 Wiring Between R9A02G0151 and Dedicated Flash Memory Programmer	31

1. Features

RTK-G015-EPRSinkCharger-140W supports the following features.

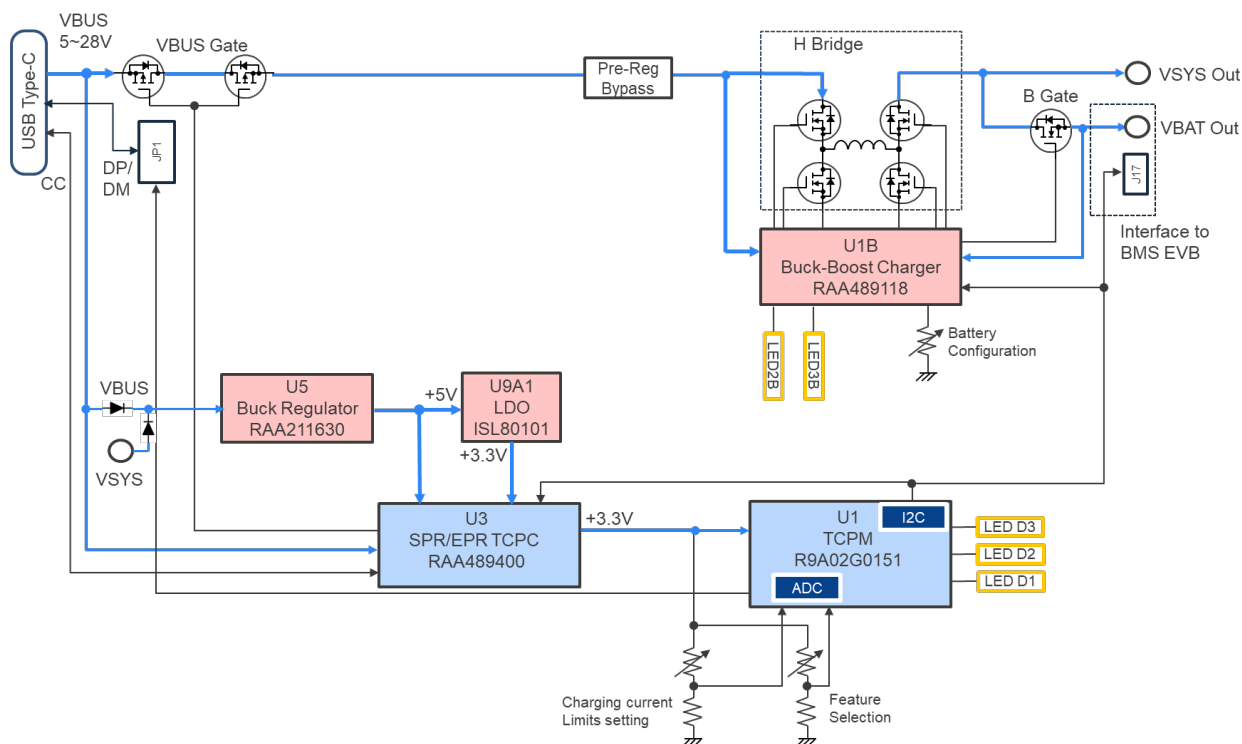
- USB Power Delivery and USB Type-C®
 - Supports USB Power Delivery Specification Revision 2.0, USB Power Delivery Specification Revision 3.1, USB Type-C® Cable and Connector Specification Revision 2.2.
 - Supported features
 - Power Role: Sink Only (SNK) or Dual Role Power (DRP)
 - Under Sink Only mode, RTK-G015-EPRSinkCharger-140W requires SPR mode 5, 9, 15, 20V or EPR mode 28V input from USB Type-C® power sourcing device.
 - Under Power Bank (DRP) mode, RTK-G015-EPRSinkCharger-140W requires SPR mode 5, 9, 15, 20V or EPR mode 28V input from USB Type-C® power sourcing device in sinking mode and supports source PDP ratings of 15W, 27W, 45W, 60W, 100W, or 140W in sourcing mode.
 - 1 USB Type-C® port
- Interface
 - LED indicators
 - Power Supply Indicator (2 LEDs, green)
One is for Sinking LED and the other is for Sourcing LED
 - Indicators from R9A02G0151 (3 LEDs, red)
 - Switches
 - Battery Configuration control for RAA489118
 - Charging Current limits control for R9A02G0151
 - On-chip debugging emulator interface
 - Renesas on-chip debugging emulator interface to write and debug firmware for R9A02G0151
 - Battery Management System interface
 - Renesas BMS evaluation board interface to communicate with Battery module including FGIC
 - The input voltage of the battery charger is from Type-C® sourcing device negotiated with the R9A02G0151

RTK-G015-EPRSinkCharger-240W supports the following features.

- USB Power Delivery and USB Type-C®
 - Supports USB Power Delivery Specification Revision 2.0, USB Power Delivery Specification Revision 3.1, USB Type-C® Cable and Connector Specification Revision 2.2.
 - Plan to get USB Certification
 - Power Role: Sink Only (SNK) or Dual Role Power (DRP)
 - Under Sink Only mode, RTK-G015-EPRSinkCharger-240W requires SPR mode 5, 9, 15, 20V or EPR mode 28, 36, 48V input from USB Type-C® power sourcing device.
 - Under Power Bank (DRP) mode, RTK-G015-EPRSinkCharger-240W requires SPR mode 5, 9, 15, 20V or EPR mode 28, 36, 48V input from USB Type-C® power sourcing device in sinking mode and supports source PDP ratings of 15W, 27W, 45W, 60W, 100W, or 140W in sourcing mode.
 - 1 USB Type-C® port
- Interface
 - LED indicators
 - Power Supply Indicator (2 LEDs, green)
One is for Sinking LED and the other is for Sourcing LED
 - Indicators from R9A02G0151 (3 LEDs, red)
 - Switches
 - Battery Configuration control for RAA489118
 - Charging Current limits control for R9A02G0151
 - On-chip debugging emulator interface
 - Renesas on-chip debugging emulator interface to write and debug firmware for R9A02G0151
 - Battery Management System interface
 - Renesas BMS evaluation board interface to communicate with Battery module including FGIC
 - The input voltage of the battery charger is from 3-level Buck Pre-Regulator (RAA489300) that regulates input voltage up to 48V from Type-C® sourcing device negotiated with the R9A02G0151

1.1 Block Diagram

**Figure 1-1 RTK-G015-EPRSinkCharger-140W block diagram
(RTKA489EPRDE0010BU: 28V EPR mode)**



**Figure 1-2 RTK-G015-EPRSinkCharger-240W block diagram
(RTKA489EPRDE0000BU: 48V EPR mode)**

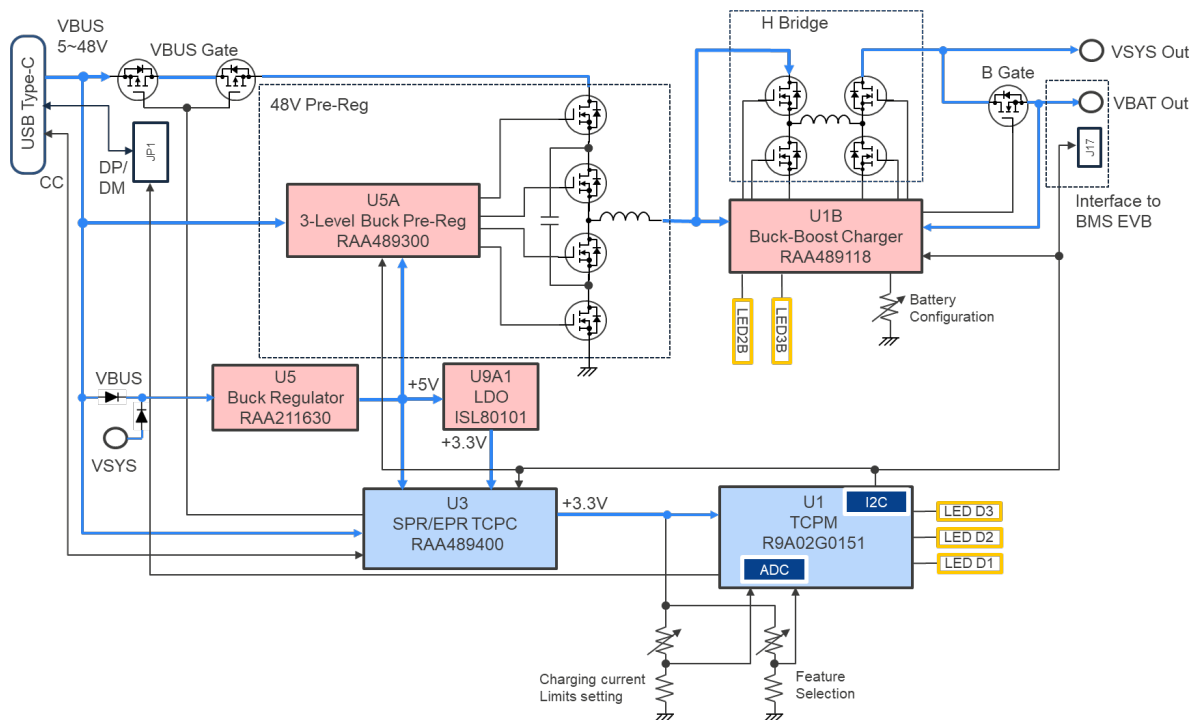
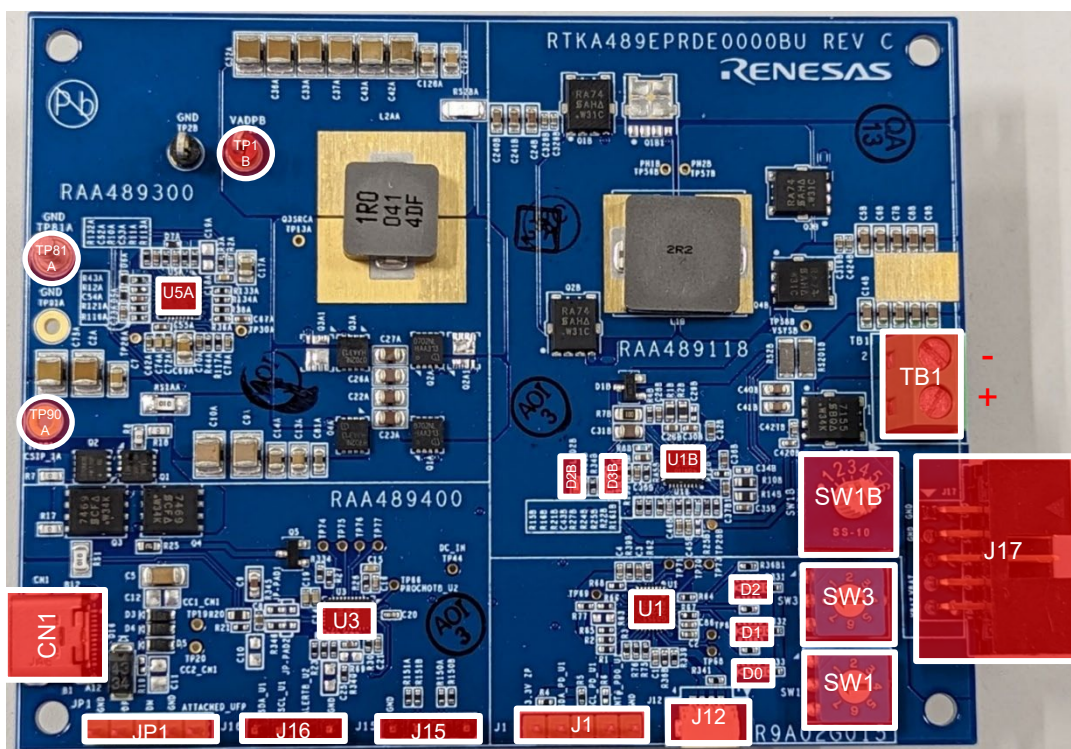
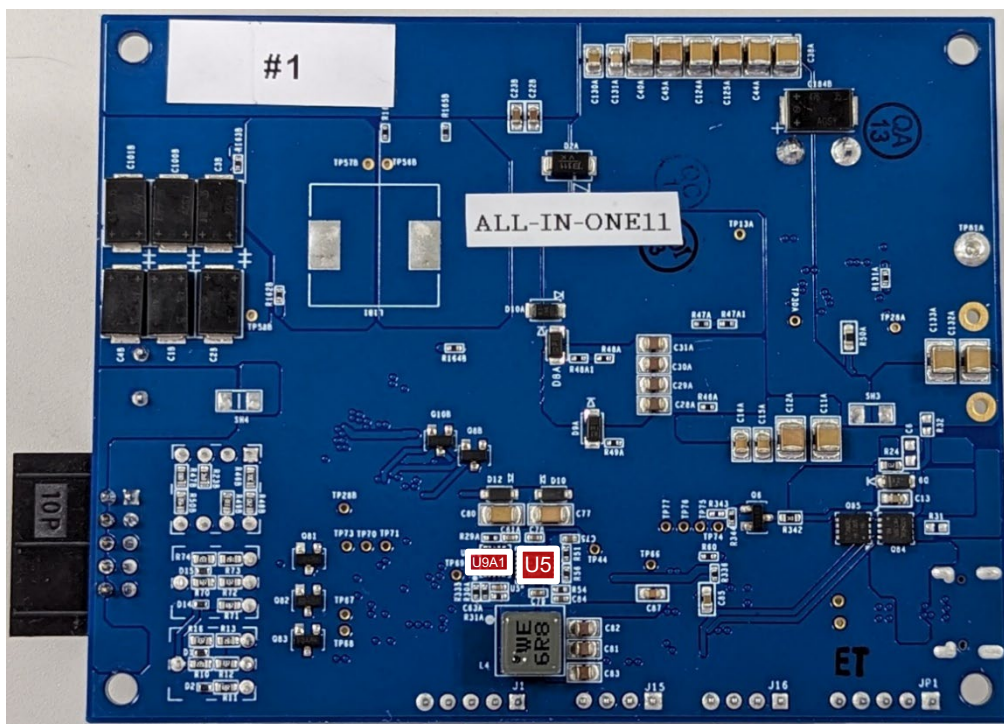


Figure 1-4 Highlighted main parts on the RTK-G015-EPRSinkCharger-240W board
a. TOP side



b. Bottom side



1.2.2 Component information

(1) IC

No.	Description	Remark
U1	R9A02G0151 (USB-C Port Manager: TCPM)	-
U3	RAA489400 (48V USB-C Port Controller: SPR/EPR TCPC)	-
U5A	RAA489300 (48V 3-Level Buck Pre-Regulator) Not available on RTK-G015-EPRSinkCharger-140W	-
U1B	RAA489118 (On-Board Charger)	-
U5	RAA211630 (5V output DC/DC synchronous Buck regulator)	-
U9A1	ISL80101 (3.3V output LDO)	-

(2) Connector

No.	Description	Remark
CN1	USB Type-C receptacle	-
J12	Renesas on-chip debugging emulator interface	-
JP1	USB2.0 Data interface	-
TB1/J17	Connector for Battery Management System	-
J15	SMBus Master 2 SCL, SDA on R9A02G0151	P70, P71
J16	SMBus Master 1 SCL, SDA alert on R9A02G0151	P53, P54, P55
J1	SMBus Slave SCL, SDA, alert on R9A02G0151	P62, P63, P64

(3) Switch

No.	Description	Connects to
SW1	Rotary switch for setting the Charger Current Limit	R9A02G0151: P25
SW3	Rotary switch for Operating Mode selection	R9A02G0151: P24
SW1B	Rotary switch for configuration of number of Battery cells	RAA489118: PROG

(4) LED

No.	Description	Remark
D0	Indicator 0 from R9A02G0151 (red)	Indicates the HW setting error
D1	Indicator 1 from R9A02G0151 (red)	Indicates EPR mode
D2	Indicator 2 from R9A02G0151 (red)	Indicates power on reset
D2B	Power Supply Indicator for Sink mode (green)	-
D3B	Power Supply Indicator for Source mode (green)	-

(5) Test point

No.	Description	Remark
TP90A	VIN	-
TP2B, TP81A, TP91A	GND	-
TP1B	VADP (Monitor for Battery Charger input)	-
TP28B	VSYS (DC output)	-

1.3 Function assignment for RAA489400 on RTK-G015-EPRSinkCharger

Table 1-1 shows the functions assigned to RAA489400 on RTK-G015-EPRSinkCharger.

Table 1-1 The functions assigned to RAA489400 pins on RTK-G015-EPRSinkCharger

Pin name	Function	Descriptions
NC_1	Open	-
CC1	CC1	Configuration Channel 1, Analog pin from CC-PHY
RD1	RD1	Rd resistor 1, Analog pin from CC-PHY.
VDD25	VDD25	Connected a capacitor to GND.
GPIO4	Open	-
GPIO3	Open	-
GPIO2	GATE	Gate drive output of N-Channel MOSFET VBus Source (greater than 5V) path.
GPIO1	GATE	Gate drive output of N-Channel MOSFET VBus Source (greater than 5V) path.
OCP#	Open	-
PROG	Pull-down	Set SMBus slave address.
NC_11	Open	-
VSYS33	VDD	Power supply (+3.3V).
VDD33	VDD	Power supply (+3.3V) connected to R9A02G0151
VBUS	VBUS	USB-C VBus input (~48V).
CSIP	CSIP	Current sense "+" input from VBus path.
CSIN	CSIN	Current sense "-" input from VBus path.
NC_17	Open	-
VSINK_GATE	GATE	Gate drive output of N-Channel MOSFET VBus Sink path.
VSINK_SRC	REF	N-Channel MOSFET source input reference for VBus Sink path FET(s).
VSINK_DISCHG	DISCHG	VBus Sink path discharge.
VSRC_GATE	GATE	Gate drive output of N-Channel MOSFET VBus Source (5V) path.
VSRC_SRC	REF	N-Channel MOSFET source input reference for VBus Source (5V) path FET(s).
VSRC_BOOT	REF	N-Channel MOSFET source input reference for VBus Source (5V) path FET(s).
GND	GND	Ground
RD2	RD2	Rd resistor 2, Analog pin from CC-PHY.
CC2	CC2	Configuration Channel 2, Analog pin from CC-PHY.
NC_27	NC	-
SCL	MSTSC1	SMBus slave clock input connected to R9A02G0151.
SDA	MSTSDA1	SMBus slave data input/output (open-drain) connected to R9A02G0151.
VCONN_POWER	VCONN	Power supply (+5V) for VCONN.
ALERT#	ALERT#1	SMBus slave ALERT# output (open-drain) connected to R9A02G0151.
PROCHOT#	Open	-
CC1_EP	CC1	Configuration Channel 1, Analog pin from CC-PHY.
CC2_EP	CC2	Configuration Channel 2, Analog pin from CC-PHY.

1.4 Function assignment for R9A02G0151 on RTK-G015-EPRSinkCharger

Table 1-2 shows the functions assigned to R9A02G0151 on RTK-G015-EPRSinkCharger.

Table 1-2 The functions assigned to R9A02G0151 pins on RTK-G015-EPRSinkCharger

Pin name	Function	Descriptions
P40	TOOL0	Connected to on-chip debugging emulator interface for flash programming.
RESETB	RESETB	Chip Reset Input (active low)
P137	Open	-
P122	Open	-
P121	SOURCE Mode	Connected to OTGPG/CMOut# of On-Board Charger.
REGC	REGC	Regulator capacitance. Connecting regulator output stabilization capacitance for internal operation.
VDD	VDD	Power supply (+3.3V)
P60	Pull-down	Unused
GND	GND	Ground
P61	Open	-
P62	SLVSCL	SMBus salve clock input connected to J1
P63	SLVSDA	SMBus salve data input/output (open-drain) connected to J1
P64	SLVALTB	Connected to J1
P50	Open	Unused
P51	DRP	Connected to OTGEN/CMIN of On-Board Charger.
P52	PGOOD	Connected to PGood of 48V 3-Level Buck Pre-Regulator. Unused on RTK-G015-EPRSinkCharger-140W.
P53	MSTSCL1	SMBus master clock output (open-drain) connected to RAA489400
P54	MSTSDA1	SMBus master data input/output (open-drain) connected to RAA489400
P55	ALERT#1	SMBus master ALERT# input connected to RAA489400
P70	MSTSCL2	SMBus master clock output (open-drain) connected to RAA489118. For RTK-G015-EPRSinkCharger-240W, also connected to 48V 3-Level Buck Pre-Regulator.
P71	MSTSDA2	SMBus master data input/output (open-drain) connected to RAA489118. For RTK-G015-EPRSinkCharger-240W, also connected to 48V 3-Level Buck Pre-Regulator.
UVDD	VDD	Power supply (+3.3V)
P72	Open	-
P73	Open	-
P74	UFP	Attached UFP on USB2.0 interface header
P25	SW1	Input from Rotary Dip switch for Charging Current Limits control
P24	SW3	Input from Rotary Dip switch for Operating Mode Selection
P23	SINK Mode	Connected to ACOK of On-Board Charger.
P22	INDICATOR 3	Indicator 3, connected to D2. It indicates that the power-on reset has been performed.
P21	INDICATOR 2	Indicator 2, connected to D1. It indicates the board is in EPR mode.
P20	INDICATOR 1	Indicator 1, connected to D0. It indicates the HW setting error
P01	INT	Connected to INT#/CMOut# of 48V 3-Level Buck Pre-Regulator. Unused on RTK-G015-EPRSinkCharger-140W.
P00	Open	-

1.5 Function assignment for RAA489118 on RTK-G015-EPRSinkCharger

Table 1-3 shows the functions assigned to RAA489118 on RTK-G015-EPRSinkCharger.

Table 1-3 The functions assigned to RAA489118 pins on RTK-G015-EPRSinkCharger

Pin name	Function	Descriptions
CSON	CSON	Battery current sense "-" input
CSOP	CSOP	Battery current sense "+" input
VSYS	VSYS	Provides feedback voltage for System Voltage regulation.
BOOT2	BT2	High-side MOSFET Q4 gate driver supply
UGATE2	UG2	High-side MOSFET Q4 gate drive
PHASE2	PH2	Current return path for the high-side MOSFET Q4 gate drive
LGATE2	LG2	Low-side MOSFET Q3 gate drive
VDDP	VDDP	Power supply for the gate drivers
LGATE1	LG1	Low-side MOSFET Q2 gate drive
PHASE1	PH1	Current return path for the high-side MOSFET Q1 gate drive
UGATE1	UG1	High-side MOSFET Q1 gate drive
BOOT1	BT1	High-side MOSFET Q1 gate driver supply
ASGATE	Open	Unused
CSIN	CSIN	Current sense "-" input from Vbus path
CSIP	CSIP	Current sense "+" input from Vbus path
ADP	ADP	Voltage Sense input from Vbus path
DCIN	DCIN	Internal LDO input that provides power to the IC
VDD	VDD	Internal LDO output that provides the bias power for the internal circuit
ACIN	ACIN	Vbus voltage sense input
OTGEN/CMIN	DRP	Connected to P51 of R9A02G0151
SDA	SDA	SMBus slave data input/output (open-drain) connected to R9A02G0151
SCL	SCL	SMBus slave clock input connected to R9A02G0151
PROCHOT#	PROCHOT#	Unused
ACOK	SINK Mode	Power Supply Indicator, connected to P23 of R9A02G0151 and D2B
BATGONE	BATGONE	Battery presence input
OTGPG/CMOUT	SOURCE Mode	Connected to P121 of R9A02G0151 and D3B
PROG	PROG	Input from Rotary switch for Configuration of the number of battery cells
COMP	COMP	Error amplifier output
AMON/BMON	AMON/BMON	Unused
CONFIG/PSYS	PSYS	Unused
VBAT	VBAT	Battery voltage sense input
BGATE	BGATE	Gate drive output to the P-channel FET connecting the system and the battery

2. Function

2.1 Battery Configuration

Battery Configuration is set by SW1B.

Table 2-1 Rotary switch setting value for Battery Configuration

SW position	RTK-G015-EPRSinkCharger
1	2 Cells in series
2	3 Cells in series
3	4 Cells in series
4	5 Cells in series
5	6 Cells in series
6	7 Cells in series

The standard parameters of charger in firmware (FW) define MaxSysVol/cell as 4.048V and MinSysVol/cell as 2.816V, which correspond to typical voltages for Li-Ion battery chemistries such as LiCoO₂ and LiMn₂O₄ battery. Table 2-2 shows the default MaxSysVol and MinSysVol for each battery configuration.

Table 2-2 Battery Configuration vs MaxSysVol/MinSysVol for LiCoO₂ and LiMn₂O₄ battery in Standard FW

Battery Configuration	MaxSysVol (mV)	MinSysVol (mV)
2 Cells in series	8096	5632
3 Cells in series	12144	8448
4 Cells in series	16192	11264
5 Cells in series	20240	14080
6 Cells in series	24288	16896
7 Cells in series	28336	19712

For example, the MaxSysVol/cell and MinSysVol/cell for a LiFePO₄ based battery are lower than those of other Li-Ion batteries such as LiCoO₂ and LiMn₂O₄ battery. Therefore, if the user wants to use other MaxSysVol and MinSysVol values, VIDWriter 1.2.2.0 can be used to generate a FW with such parameters. Please refer to Section 2.2 and Section 3.4. The Charger's MaxSysVol range is 8V to 30.8V and the Charger's MinSysVol range is 5.12V to 25.088V, so the user can only set MaxSysVol and MinSysVol with these ranges.

Table 2-3 shows sample MaxSysVol and MinSysVol for each battery configuration of LiFePO₄ based batteries with MaxSysVol/cell at 3.4V and MinSysVol/cell at 2.2V.

Table 2-3 Battery Configuration vs sample MaxSysVol/MinSysVol for LiFePO₄ battery

Battery Configuration	MaxSysVol (mV)	MinSysVol (mV)
3 Cells in series	10200	6600
4 Cells in series	13600	8800
5 Cells in series	17000	11000
6 Cells in series	20400	13200
7 Cells in series	23800	15400
8 Cells in series	27200	17600

MaxSysVol represents the maximum battery charging voltage. It is defined as “Full” in this document. If VBAT reaches the “Full” value, the charger operates in Constant Voltage mode. MinSysVol represents the minimum allowed voltage during discharging mode. It is defined as “Empty” in this document. In charging mode, when VBAT is less than the “Empty” value, the Charger trickle charges the battery at a low current level. When VBAT is between Full and Empty value, the charger operates in Constant Current mode.

Standard FW includes both MaxSysVol and MinSysVol values that are matched to the battery cell configuration set by rotary switch SW1B. If the battery configuration is fixed, the resistor values in Table 2-4 can be used in place of the rotary switch.

Table 2-4 Resistor values for substitute circuit

Battery Configuration	Resistor value (kΩ) for RAA489118
2 Cells in series	52.3
3 Cells in series	82.5
4 Cells in series	118
5 Cells in series	162
6 Cells in series	215
7 Cells in series	287

Note: Resistor value within a tolerance of +/- 1% must be used.

2.2 Charging Current Limits

SW1 is used to set Charging Current Limits and operating mode.

There are three operating modes: "Board", "BMS", and "Manual". The default firmware uses "Board" mode, in which the switches on the board configure the EVB parameters. "BMS" sets EVB parameters by battery status information from BMS. "Manual" can set EVB parameters directly using the VIDwriter.

Note: In order to use "Board" DRP, or "BMS" DRP, "Manual" modes, FW on the board must be rewritten by the VIDWriter 1.2.2.0-generated FW. If operating mode is changed to "Board" or "BMS" from "Manual", FW on the board also must be rewritten by the VIDWriter 1.2.2.0-generated FW.

Table 2-5 Rotary switch setting value for Charging Current Limits

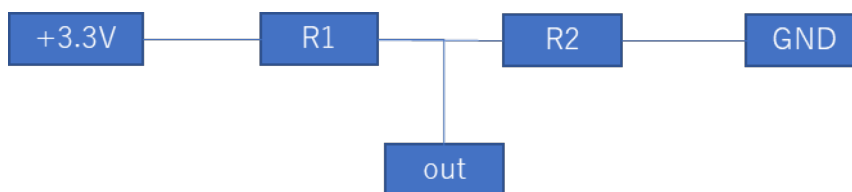
SW position	Charging Current Limits (SW1)	Operating mode
0	The specific values (MaxSysVol, MinSysVol, and Charging Current limit) can be set in FW	Manual
1	2A	Board (Default)
2	4A	
3	6A	
4	8A	
5	10A	
6	12A	
7	The values (MaxSysVol, Charging Current limit and so on) are retrieved via BMS interface	BMS

When using a battery evaluation module such as "RAJ240100 Filefish EVM", SW1 must be set to SW position 7. In that case, R9A02G0151 of RTK-G015-EPRSinkCharger retrieves battery related information from FGIC controller on RAJ240100 Filefish EVM. The R9A02G0151 then uses the information obtained from FGIC controller instead of SW1 value to configure the On-Board Charger. At the same time, R9A02G0151 gets the number of series cells that the battery module has. Therefore, the SW1B setting is ignored at this case. FW will be generated by VIDWriter 1.2.2.0 (See Section 3.4).

If SW1 does not have a suitable charging current value and/or user does not want to set MaxSysVol and MinSysVol as standard values, user needs to set SW1 to SW position 0 and set the expected charging current value, MaxSysVol and MinSysVol. Install them on FW that is generated by using the VIDWriter 1.2.2.0 as described in Section 3.4. In this case, the SW1B setting is ignored.

If the charging current limit is fixed, the substitute circuit as shown in Figure 2-1 can be used in place of the rotary switch.

Figure 2-1 The substitute circuit for output voltage or current



The resistor values in Table 2-6 can be used to define input level of P25.

Table 2-6 Resistors values for substitute circuit

SW Position	Resistor value (Ω)	
	R1	R2
0	Pull down to GND	
1	3.3k	2.7k
2	2.2k	2.7k
3	1.5k	2.7k
4	1.2k	2.7k
5	1k	2.7k
6	820	2.7k
7	Pull up to VDD	

Note: R1 and R2 within a tolerance of +/- 5% must be used.

2.3 Operating Mode Selection

Operating Mode selection is set by SW3.

Table 2-7 Rotary switch setting value for Operating Mode Selection

SW position	RTK-G015-EPRSinkCharger-140W Operating Mode Selection (SW3)	RTK-G015-EPRSinkCharger-240W Operating Mode Selection (SW3)
0	28V/140W EPR DRP mode 28V Sink and 28V Source	Prohibited (future use)
1	Prohibited (future use)	48V/240W EPR DRP mode 48V Sink and 28V Source
2	Prohibited (future use)	Prohibited (future use)
3	28V/140W EPR Sink Only mode	Prohibited (future use)
4	Prohibited (future use)	48V/240W EPR Sink Only mode
5	Prohibited (future use)	Prohibited (future use)
6	Prohibited (future use)	Prohibited (future use)
7	Prohibited (future use)	Prohibited (future use)

The circuit as shown in Figure 2-1 can be used in place of the rotary switch. The resistor values in Table 2-6 can be used to define input level of P24.

2.3.1 Sinking mode

Under Sink Charger operation and sinking mode for Power Bank operation, RAA489400 + R9A02G0151 will need the sourcing PDP rating as shown in Table 2-8 to the connected PD sourcing device to realize fast charging when VBAT > MinSysVol. Even if the connected PD sourcing device cannot supply the sourcing PDP rating that is shown in Table 2-8, RTK-G015-EPRSinkCharger will charge the battery with the USB-C input power that the PD adapter can supply. For example, when a product may charge at 5V, 9V and 15V, differentiation between 5V, 9V, and 15V charging voltage is charging speed.

The BB-Charger co-works with a battery module. Charging modes for the Battery module are Trickle, Constant Current (CC), and Constant Voltage (CV). As long as VBAT is less than “Empty”, the charging current is set to 256 mA. If VBAT is in between “Full” and “Empty”, the charger operates in Constant Current mode. If VBAT reaches “Full”, the charger works in Constant Voltage mode. If VBAT > MaxSysV, there is no charging/switching.

The current limit during CC and CV modes is defined by the lesser of the charger's current limit and the Type-C input current limit. When the battery is 7 cells (Full = 28.336V and Empty = 19.712V for Li-Ion batteries such as LiCoO₂ and LiMn₂O₄ battery) and Type-C input is 100W, actual charging current will be limited to around 3.4A at “Full” even if the Charging Current Limits is set to 6A. On the other hand, at a voltage just over “Empty”, actual charging current will be around 5A. As the VBAT voltage approaches “Full”, the actual charging current reduces to 3.4A.

When the battery is 4 cells (Full = 16.192V and Empty = 11.264V for Li-Ion batteries such as LiCoO₂ and LiMn₂O₄ battery) and Type-C input is 100W, actual charging current will nearly reach the 6A charging current limit at the “Full” voltage. At just over “Empty”, it is possible to supply over 9A charging current from Type-C input. However, because the charger's current limitation is 6A, the charger can only supply a maximum of 6A to the battery.

Both the 5A and EPR cables have the e-markers to notify the system of 5A capability. Shall be used USB-C EPR cable and USB-C EPR Charger under EPR mode.

Table 2-8 The expected maximum Type-C sourcing PD Power for Sinking mode

	2A	4A	6A	8A	10A	12A
2 Cells in series	3A@9V	3A@15V	3A@20V	4A ² @20V	5A ² @20V	4A ¹ @28V
3 Cells in series	2A@15V	3A@20V	5A ² @20V	4A ¹ @28V	5A ¹ @28V	5A ^{1,3} @36V
4 Cells in series	3A@15V	4A ² @20V	4A ¹ @28V	5A ^{1,3} @36V	4A ^{1,3} @48V	5A ^{1,3} @48V
5 Cells in series	3A@20V	5A ² @20V	5A ¹ @28V	4A ^{1,3} @48V	5A ^{1,3} @48V	5A ^{1,3} @48V
6 Cells in series	3A@20V	4A ¹ @28V	5A ^{1,3} @36V	5A ^{1,3} @48V	5A ^{1,3} @48V	5A ^{1,3} @48V
7 Cells in series	4A ² @20V	5A ¹ @28V	4A ^{1,3} @48V	5A ^{1,3} @48V	5A ^{1,3} @48V	5A ^{1,3} @48V

¹ EPR cable is required. ² EPR cable or 5A cable is required.

³ If EVB is the RTK-G015-EPRSinkCharger-140W, max voltage will be limited to 28V.

2.3.2 Sourcing mode

Note: The RTK-G015-EPRSinkCharger does not have a battery protection circuit on the board, so, Renesas strongly recommends using a battery module with Renesas' Battery Management System to avoid over-discharging under the power bank mode. RTK-G015-EPRSinkCharger can support power bank mode as long as the battery module uses protection circuit to avoid over-discharge, over-temperature, etc. However, this should be done at user's own risk.

Under sourcing mode for Power Bank operating, RTK-G015-EPRSinkCharger supports the standard max sourcing PD Power as shown in Table 2-9 based on following formula.

Available sourcing power = MinSysVol X Charging Current Limit X 2

The standard PD Power in FW

= Max supply current (3 or 5A) X Standard supply voltage (SPR: 5, 9, 15, or 20V, EPR: 28V)

= 15, 27, 45, or 60W (SPR and 3A cable), or 100W (SPR and 5A cable), or 140W (EPR)

The Max sourcing PD Power in FW ≤ Available sourcing power

The max sourcing PDP is calculated by the MinSysVol value and Charging Current Limit value. For example, if the MinSysVol is 11.2V and the charging current limit is 2A, the available sourcing power is 44.8W. As a result, the maximum sourcing PDP of the FW is 27W. When the MinSysVol is 19.6V and the charging current limit is 4A, the available sourcing power is 156.8W. Therefore, the user can choose either 15, 27, 45, 60, 100, or 140W as the sourcing PDP. The Max sourcing PDP is calculated by the above formula even though MaxSysVol, MinSysVol, and Charging Current Limits are set manually.

When the operating mode is “BMS”, the FW cannot recognize the MaxSysVol, MinSysVol, and Charging Current Limits until R9A02G0151 retrieves the battery information from BMS. Therefore, the user should set the appropriate Max sourcing PD Power that battery module can support.

The USB-PD PDO list, which is used on PD negotiation, will be generated by this Max sourcing PDP.

Table 2-9 The supported maximum Type-C sourcing PD Power for Sourcing mode

	2A	4A	6A	8A	10A	12A
2 Cells in series	15W	45W	60W	60W	100W ²	100W ²
3 Cells in series	27W	60W	100W ²	100W ²	140W ¹	140W ¹
4 Cells in series	45W	60W	100W ²	140W ¹	140W ¹	140W ¹
5 Cells in series	45W	100W ²	140W ¹	140W ¹	140W ¹	140W ¹
6 Cells in series	60W	100W ²	140W ¹	140W ¹	140W ¹	140W ¹
7 Cells in series	60W	140W ¹	140W ¹	140W ¹	140W ¹	140W ¹

¹ EPR cable is mandatory to realize this max PDP.

² EPR cable or 5A cable is mandatory to realize this max PDP.

Table 2-10 PDO list

	SPR PDO1	SPR PDO2	SPR PDO3	SPR PDO4	EPR PDO1	EPR PDO2
PDP 15W	5V/3A	-	-	-	-	-
PDP 27W	5V/3A	9V/3A	-	-	-	-
PDP 45W	5V/3A	9V/3A	15V/3A	20V/2.25A	-	-
PDP 60W	5V/3A	9V/3A	15V/3A	20V/3A	-	-
PDP 100W	5V/3A	9V/3A	15V/3A	20V/5A ¹	-	-
PDP 140W	5V/3A	9V/3A	15V/3A	20V/5A ¹	28V/5A ²	28V AVS ²

¹ When the connected cable does not have 5A capability, RTK-G015-EPRSinkCharger shall advertise 20V/3A PDO instead of 20V/5A PDO.

² When the connected cable does not have EPR capability, RTK-G015-EPRSinkCharger shall not advertise EPR PDO. So, MAX PDO will be 20V/5A PDO when the connected cable has 5A capability.

3. Board setup and usage

3.1 Required materials to use this board.

- RTK-G015-EPRSinkCharger: 1 unit
- USB Type-C Cable: 1pcs (When the required maximum Type-C sourcing PD Power is 20V@ 5A, 5A cable or EPR cable that has 5A capability shall be required. Also, when the required maximum Type-C sourcing PD voltage is 28V, 36V, or 48V, EPR cable shall be required.)

Notes:

This board does not require an external power supply except for the batteries.

PLEASE USE THIS BOARD WHEN YOU UNDERSTAND AND AGREE THAT RENESAS DOES NOT HAVE ANY RESPONSIBILITY, INDEMNIFICATION, OR LIABILITY FOR USE OF THIS BOARD.

3.2 How to connect battery module.

The RTK-G015-EPRSinkCharger operation will be managed by the type of battery module.

3.2.1 How to charge battery module with the standard charger parameters (“Board” mode) without Renesas BMS interface when connected to a source device.

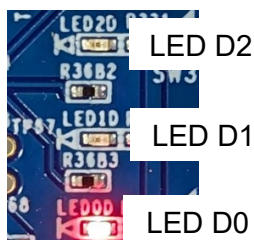
1. Select the expected Charging Current Limit by setting the rotary switch (SW1) to one of positions 1 to 6. (See Section 2.2)
2. Select the expected battery configuration by the rotary switch (SW1B). (See Section 2.1)
3. RTK-G015-EPRSinkCharger-140W in Sink Only mode set the rotary switch (SW3) to position 3. It in DRP mode set the rotary switch (SW3) to position 0. RTK-G015-EPRSinkCharger-240W in Sink Only mode set the rotary switch (SW3) to position 4. It in DRP mode set the rotary switch (SW3) to position 1. (See Section 2.3)
4. If select DRP mode, must update FW including appropriate charger parameters that is generated by the VIDWriter 1.2.2.0, to RTK-G015-EPRSinkCharger.
5. Connect Battery module w/o Renesas BMS interface to TB1.
6. Connect USB Type-C® sourcing device to USB Type-C® receptacle (CN1) via USB Type-C® Cable and supply power to the battery module, confirm green LED (D2B) lights on.

Figure 3-1 Power Indicator for Sink mode



7. The board supplies power to battery module.

8. If LED D0 lights on, Operating mode/Battery configuration is not matched to actual system configuration. Please check SW1, SW3 and SW1B setting and actual system configuration.

Figure 3-2 Error Indication

Never change SW1/SW3/SW1B when the Board power is ON.

3.2.2 How to charge battery module with the custom charger parameters (“Manual” mode) without Renesas BMS interface when connected to a source device.

1. Must update FW including appropriate charger parameters that is generated by the VIDWriter 1.2.2.0, to RTK-G015-EPRSinkCharger.
2. Set the rotary switch (SW1) to position 0. (See Section 2.2)
3. RTK-G015-EPRSinkCharger-140W in Sink Only mode set the rotary switch (SW3) to position 3. It in DRP mode set the rotary switch (SW3) to position 0. RTK-G015-EPRSinkCharger-240W in Sink Only mode set the rotary switch (SW3) to position 4. It in DRP mode set the rotary switch (SW3) to position 1. (See Section 2.3)
4. Connect Battery module w/o Renesas BMS interface to TB1.
5. Connect USB Type-C® sourcing device to USB Type-C® receptacle (CN1) via USB Type-C® Cable and supply power to the battery module, confirm green LED (D2B) lights on as shown in Figure 3-1.
6. The board supplies power to battery module.
7. If LED D0 as shown in Figure 3-2 lights on, Operating mode/Battery configuration is not matched to actual system configuration. Please check SW1, SW3 and SW1B setting and actual system configuration.

Never change SW1/SW3/(SW1B) when the Board power is ON.

3.2.3 How to charge battery module with Renesas BMS interface when connected to a source device.

1. RTK-G015-EPRSinkCharger-140W in Sink Only mode set the rotary switch (SW3) to position 3. It in DRP mode set the rotary switch (SW3) to position 0. RTK-G015-EPRSinkCharger-240W in Sink Only mode set the rotary switch (SW3) to position 4. It in DRP mode set the rotary switch (SW3) to position 1. (See Section 2.3)
2. If select DRP mode, must update FW including appropriate charger parameters that is generated by the VIDWriter 1.2.2.0, to RTK-G015-EPRSinkCharger.
3. Set the rotary switch (SW1) to position 7. (See Section 2.2)
4. Connect Battery module w/ Renesas BMS interface to J17.
5. FW of RTK-G015-EPRSinkCharger will retrieve the max charging voltage and current limits via Renesas BMS interface and set appropriate value to Battery Charger on RTK-G015-EPRSinkCharger.
6. Connect USB Type-C® sourcing device to USB Type-C® receptacle (CN1) via USB Type-C® Cable and supply power to the battery module, confirm green LED (D2B) lights on as shown in Figure 3-1.
7. The board supplies power to battery module.

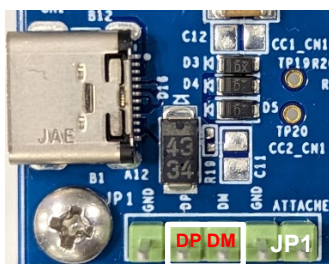
8. If LED D0 as shown in Figure 3-2 lights on, Operating mode/Battery configuration is not matched to actual system configuration. Please check SW1, SW3 and SW1B setting and actual system configuration.
9. FW of RTK-G015-EPRSinkCharger frequently retrieves the max charging voltage and current limits via Renesas BMS interface and updates setting value of Battery Charger on RTK-G015-EPRSinkCharger.

Never change SW1/SW3/(SW1B) when the Board power is ON.

3.2.4 Power Bank mode setting

When the user wants to use RTK-G015-EPRSinkCharger in Power Bank mode (DRP) without USB2.0 data communication, install a jumper to short DP and DM of JP1.

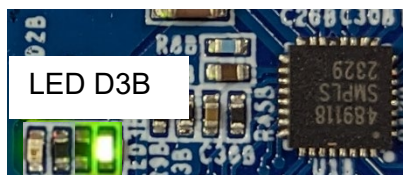
Figure 3-3 Connector for Power Bank mode setting



If the user wants to use RTK-G015-EPRSinkCharger in Power Bank mode (DRP) with USB2.0 data communication, please refer to Section 4.1.

Connect USB Type-C® sinking device to USB Type-C® receptacle (CN1) via USB Type-C® Cable and RTK-G015-EPRSinkCharger is in Power Bank Sourcing mode, confirm green LED (D3B) lights on.

Figure 3-4 Power Indicator for Source mode



3.3 Battery module with Renesas BMS interface.

Battery module with Renesas BMS interface is described in this section. Renesas release Filefish that is FIXED firmware solution for Renesas Battery Fuel Gauging IC (FGIC), which requires no additional firmware development. Using this solution, the battery management system (BMS) can be easily and quickly designed, and the time to market can be significantly reduced.

RAJ240100 Filefish EVM is one of the battery evaluation modules including FGIC with Filefish.

RTK-G015-EPRSinkCharger communicates with RAJ240100 Filefish EVM to realize battery management system.

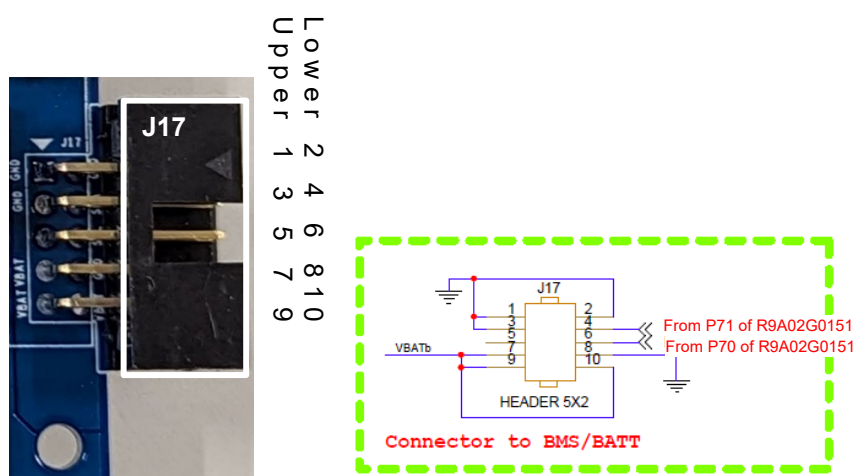
3.3.1 RAJ240100 Filefish EVM Connection

RAJ240100 Filefish EVM connects to RTK-G015-EPRSinkCharger via J17 connector. Both RTK-G015-EPRSinkCharger and RAJ240100 Filefish EVM interface described in Table 3-1.

Table 3-1 RTK-G015-EPRSinkCharger and Battery Module Filefish EVM signal

Pin	RTK-G015-EPRSinkCharger	RAJ240100 Filefish EVM
1	GND	PACK-
2	GND	PACK-
3	GND	PACK-
4	P71 of R9A02G0151	SDA
5	Open	(NC)
6	P70 of R9A02G0151	SCL
7	VBATb	PACK+
8	GND	PACK-
9	VBATb	PACK+
10	VBATb	PACK+

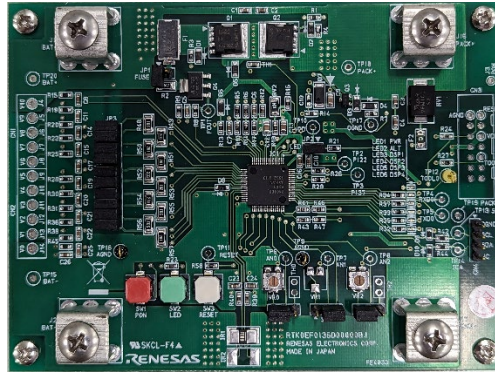
Figure 3-5 RTK-G015-EPRSinkCharger Connector to BMS EVB and Pin Assign



3.3.2 RAJ240100 Filefish EVM

It is necessary to program battery management configurations to FGIC depending on customer's application conditions. Refer to RAJ240100 Filefish User's Manual R01AN6763EJ for details.

Figure 3-6 RAJ240100 Filefish EVM



Note:

Minimum number of cells for Filefish (RAJ240100) is 3 cells in series.

For more information about Filefish, please contact your Renesas representative.

3.4 Firmware writing to the R9A02G0151 on RTK-G015-EPRSinkCharger

This section describes how to generate and write the firmware (e.g. Intel HEX file) to the R9A02G0151 in an appropriate method.

3.4.1 FW generation

3.4.1.1 Operating Environment

(1) Host PC

- Processor: 1 GHz or faster
- Main memory: At least 1 Gbyte
- Display: Resolution of 1024 x 768 or higher and 65,536 or more colors

(2) Supported OS

- Windows 10 (32-bit or 64-bit)
- Windows 11 (32-bit or 64-bit)

Remark:

Microsoft.NET Framework 4.6.1 or later has to be installed.

3.4.1.2 Setup the VIDWriter

(1) Install Microsoft .NET Framework 4.6.1 or later.

(2) Uses exe file including in the unzip directory.

This tool can work without installation. DO NOT change directory structure in the unzipped data.

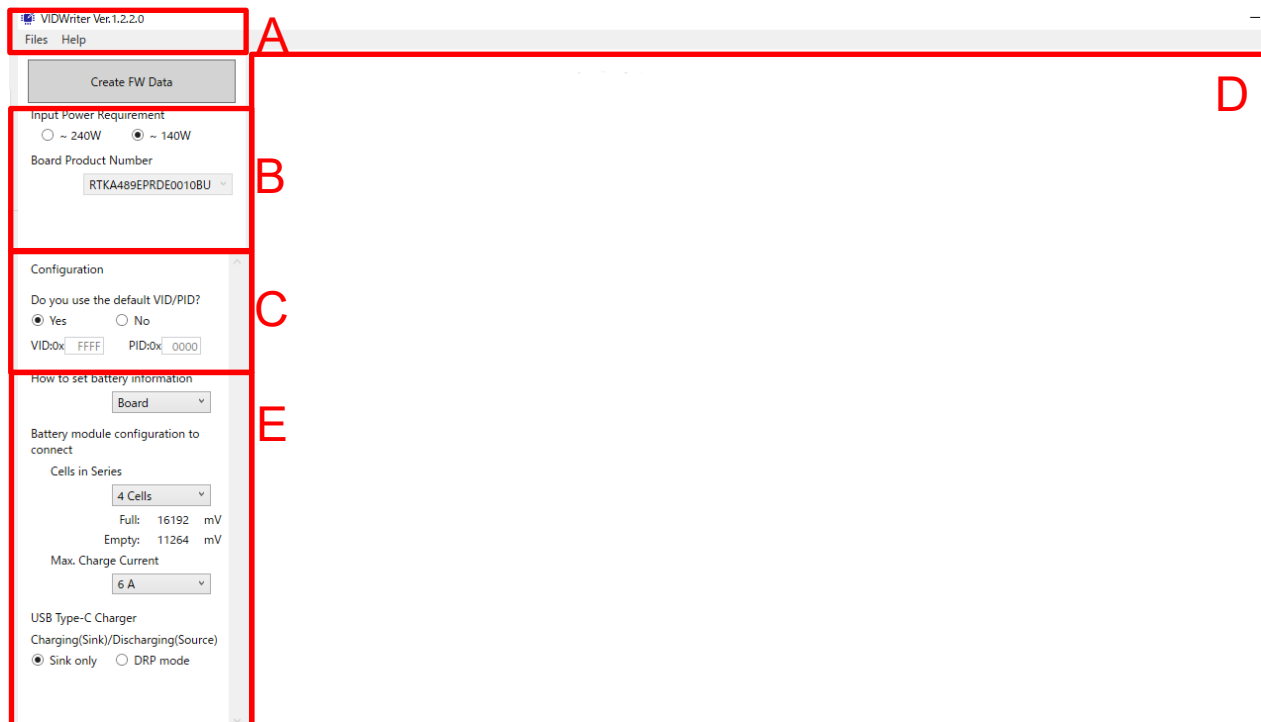
(3) Check Tool version and FW package version in "Help" -> "About".

VIDWriter 1.2.2.0 applies to the RTK-G015-EPRSinkCharger.

3.4.1.3 Run VIDWriter to generate ROM Image File

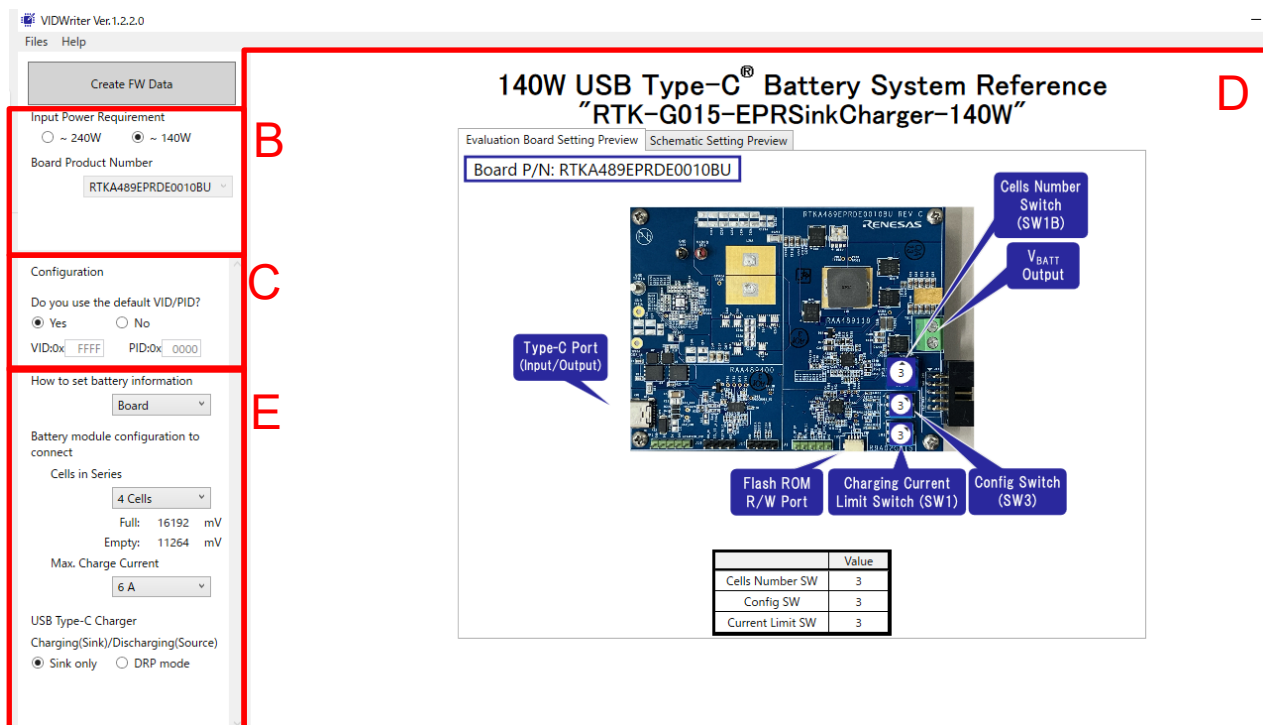
When you run VIDWriter 1.2.2.0, the window as shown Figure 3-7 will display.

Figure 3-7 Main window for VIDWriter 1.2.2.0



- 1) Menu Bar
You can check Tool version and FW package version in “Help” -> “About”. VIDWriter 1.2.2.0 applies to the RTK-G015-EPRSinkCharger.
- 2) Field B to select the required feature
Choose the features that match your required behavior in this field. Once selected, the recommended turnkey solution will be displayed in Field D and the possible configurations will be shown in Field E.
- 3) Field C to set VID/PID number.
If you want to use your own hexadecimal VID and PID numbers instead of the default VID/PID(0xFFFF/0x0000) numbers set in this field, overwrite your own numbers in this field. Otherwise, leave VID: FFFF and PID: 0000.
- 4) Window for the Renesas recommended turnkey solution
If the user selects an Input Power requirement of ~140W or ~240W in Field B, the appropriate RTK-G015-EPRSinkCharger will be displayed as Renesas recommended turnkey solution in Field D.

Figure 3-8 Main window for VIDWriter 1.2.2.0 after Product Configuration

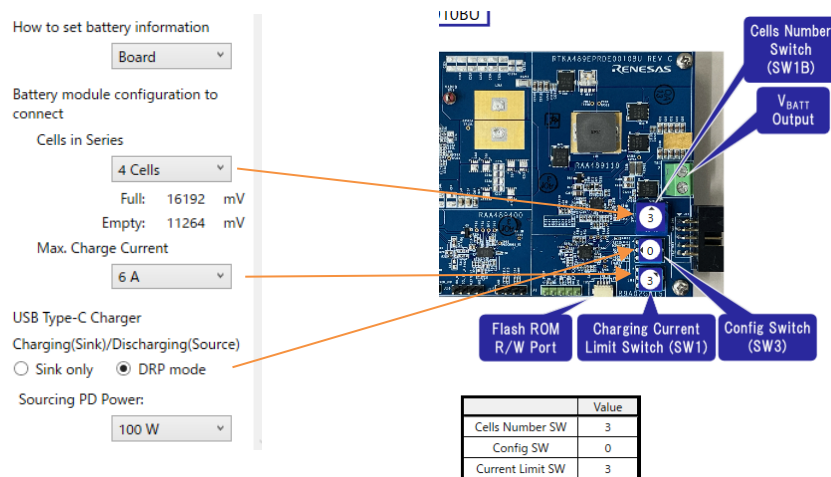


5) Field E configures the turnkey solution recommended by Renesas.

Field E is used to set the Full, Empty, Max Charging Current, and Max sourcing PDP (DRP mode). There are three operating modes: "Board", "BMS", and "Manual". The default firmware uses "Board" and "BMS" mode, in which the switches on the board configure the EVB parameters. "BMS" sets EVB parameters by battery status information from BMS. "Manual" can set EVB parameters directly using the VIDwriter. After setting in Field E, Field D indicates the appropriate physical settings on the EVB. Next, set the switches on the board according to this picture.

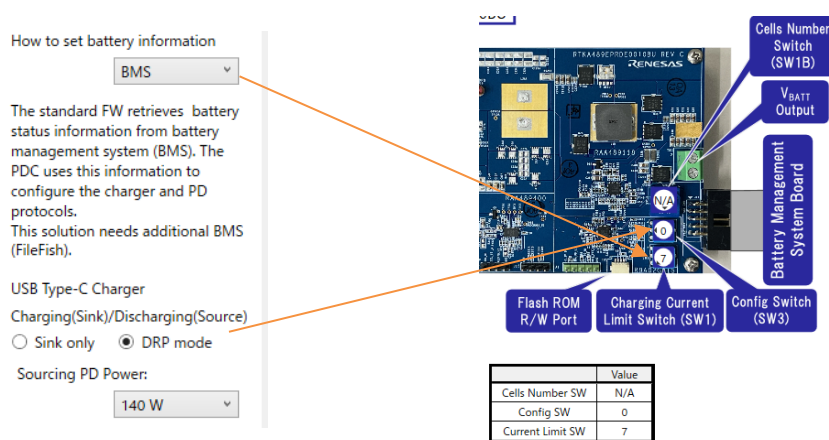
Note: In order to use "Board" DRP, or "BMS" DRP, "Manual" modes, FW on the board must be rewritten by this VIDWriter 1.2.2.0-generated FW. If operating mode is changed to "Board" from "BMS" or "Manual", FW on the board also must be rewritten by the VIDWriter 1.2.2.0-generated FW.

Note: The RTK-G015-EPRSinkCharger does not have a battery protection circuit on the board, so, Renesas strongly recommends using a battery module with Renesas' Battery Management System to avoid over-discharging under the power bank mode. RTK-G015-EPRSinkCharger can support power bank mode as long as the battery module uses protection circuit to avoid over-discharge, over-temperature, etc. However, this should be done at user's own risk.

Figure 3-9 The Field E and the EVB setting vs “Board” configuration

“Full” indicates the maximum battery charging voltage. “Empty” indicates the voltage at which the charger will trickle charge the battery at a low current level if V_{BATT} is below that value.

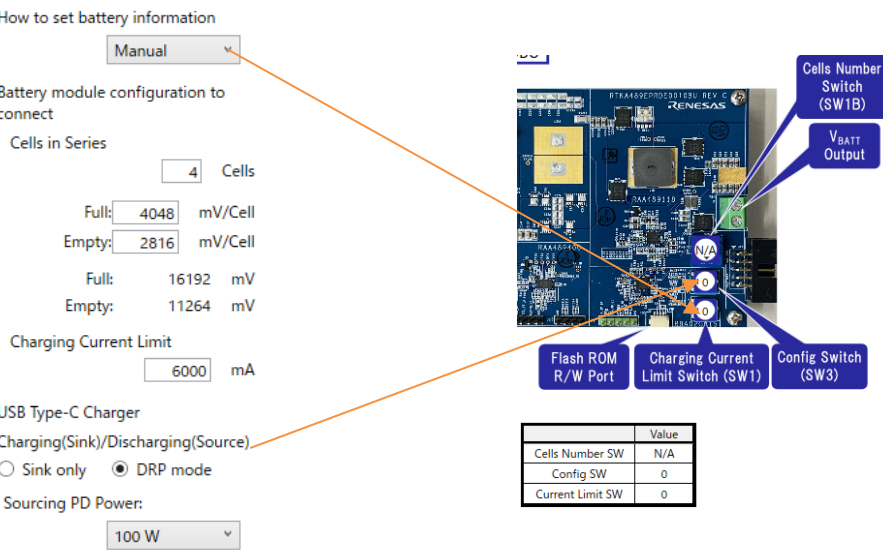
If the user wants to achieve power bank function with RTK-G015-EPRSinkCharger, please select DRP mode. Otherwise, select Sink only. In the sourcing mode of Power Bank operating, the user selects the sourcing PD Power from the drop-down list. Because default FW on board supports the maximum sourcing PD Power that board can support with current configuration, if the user wants to support other sourcing PD Power, the user should rewrite the FW on the board with this VIDWriter 1.2.2.0-generated FW. See Section 2.3.2 about the maximum sourcing PDP.

Figure 3-10 The Field E and the EVB setting vs “BMS” configuration

In “BMS” setting, this EVB frequently retrieves battery related information from RAJ240100 Filefish EVM. In this operating mode, this EVB uses the information obtained from RAJ240100 Filefish EVM instead of SW1B value to configure the On-Board Charger.

If the user wants to achieve power bank function with RTK-G015-EPRSinkCharger, please select DRP mode. Otherwise, select Sink only. In this operating mode, the FW cannot recognize the MaxSysVol, MinSysVol, and Charging Current Limits until R9A02G0151 retrieves the battery information from BMS. So, VIDWriter 1.2.2.0 cannot define the true max sourcing PD Power under sourcing mode. Therefore, the user should set the appropriate Max sourcing PD Power that battery module can support. See Section 2.3.2 about how to set maximum sourcing PDP.

Figure 3-11 The Field E and the EVB setting vs “Manual” configuration

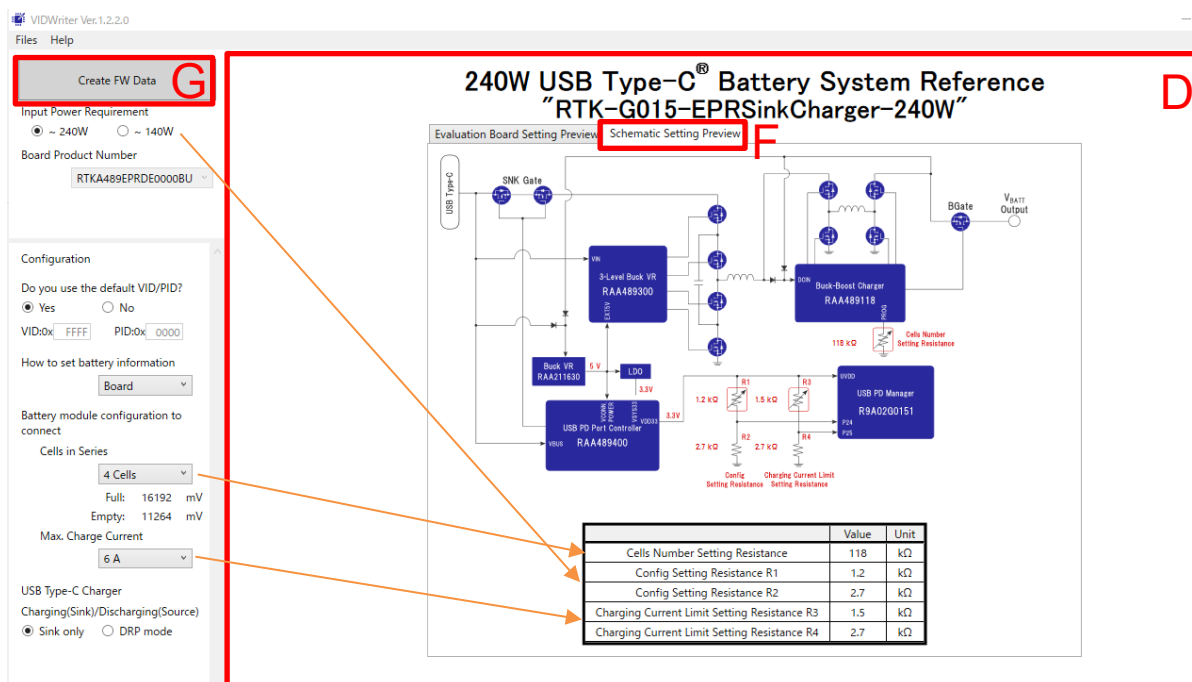


If there is no suitable charging current value on SW1 and/or user does not want to set “Full” and “Empty” as standard values, user needs to set SW1 to SW position 0 and set the expected charging current value, “Full” and “Empty”. “Full” indicates the maximum battery charging voltage. “Empty” indicates the voltage at which the charger will trickle charge the battery at a low current level if VBAT is below.

If the user wants to achieve power bank function with RTK-G015-EPRSinkCharger, please select DRP mode. Otherwise, select Sink only. In the sourcing mode of Power Bank operating, the user selects the sourcing PD Power from the drop-down list. See Section 2.3.2 about the maximum sourcing PDP.

- 6) Press the "Schematic Setting Preview" F tab in field D and you will see the recommended turnkey schematics with appropriated parameters, such as Figure 3-12.

Figure 3-12 Main window for VIDWriter 1.2.2.0 when press Schematic Setting



- 7) Finally, when you press the "Create FW Data" button, a file save dialog will be displayed. The default storage location is the "My Documents" folder. You can change the save location and file name of the ROM image as you like. If you rewrite this ROM image to R9A02G0151 on the evaluation board, please use Renesas Flash Programmer V3 as programming software.

3.4.2 Outline of flash memory writing

The R9A02G0151 supports Serial programming interface the same as RL78 MCU series.

The code flash memory can be rewritten through serial programming using a flash memory programmer.

The following dedicated flash memory programmers can be used to write data to the flash memory of the R9A02G0151. For details, refer to the related documents of the tools.

- PG-FP6

- E1, E2, E2 Lite, E20 on-chip debugging emulator

Data can be written to the flash memory on-board by using a dedicated flash memory programmer. The following table shows the relationship between the situation when writing the firmware and the available writing tool for the writing method using this interface.

Table 3-2 Firmware writing method and available writing tool

Interface	Situations	Available writing tool	Device Configuration	R9A02G0151
Serial Programming (TOOL0)	Customer's manufacturing	Example, PG-FP6, SF2000A made by Superfly China	ON board	○
	Design debug, FW update	E1, E2, E2 Lite, E20 on-chip debugging emulator	ON board	○

3.4.2.1 On-board programming

The contents of the flash memory can be rewritten after the R9A02G0151 have been mounted on the target system. The connectors that the dedicated flash memory programmer uses must be mounted on the target system.

Please use Renesas Flash Programmer V3 as programming software. Refer to the following documents.

- Renesas Flash Programmer V3.13 Flash memory programming software User's Manual (R20UT5312)
- List of MCUs supported by Renesas Flash Programmer V3 (R20UT3599)
- On the development of flash memory programmer by user, refer to **RL78 microcontrollers (RL78 Protocol A) Programmer Edition Application Note (R01AN0815)**.

Flash programming for R9A02G0151 is compatible with the RL78 MCU series. Therefore, if user want to use available flash memory programmer that supports RL78 MCU, we may be able to port the library for that programmer. Please ask a contact person.

Table 3-3 Wiring Between R9A02G0151 and Dedicated Flash Memory Programmer

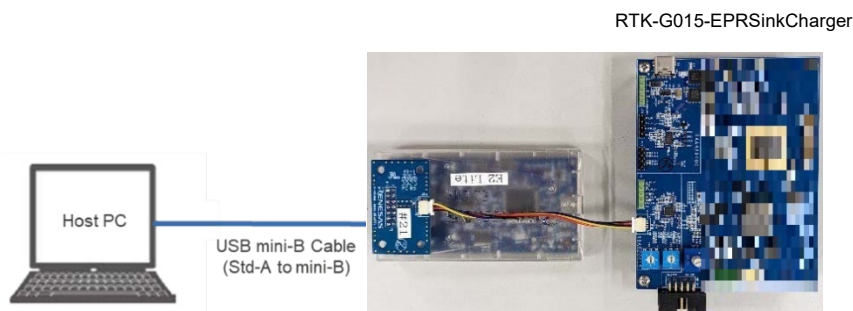
Pin Configuration of Dedicated Flash Memory Programmer				Pin name	Pin No.
					R9A02G0151 32pin
Signal Name		IO	Pin Function		QFN
PG-FP6	E1, E2, E2 Lite, E20 on-chip debugging emulator				
SI/RxD	TOOL0	I/O	Transmit/receive signal	P40	1
/RESET	RESET	Output	Reset signal	RESETB	2
VDD	VDD	I/O	VDD voltage	VDD	7
GND	GND	-	Ground	GND Pad	GND PAD
FLMD1	EMVDD	-	Driving power for TOOL0 pin	VDD	7

Remark: Pins that are not indicated in the above table can be left open when using the flash memory programmer for flash programming.

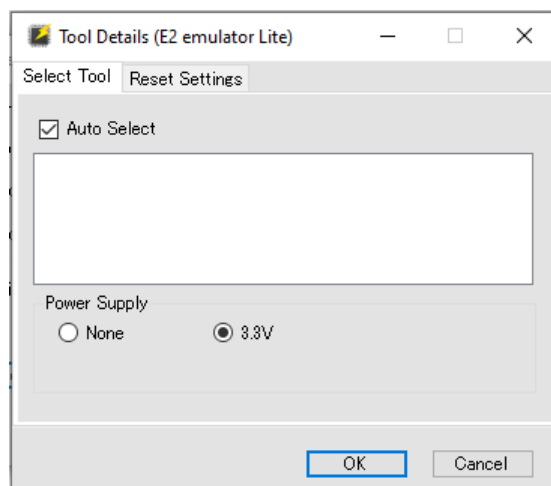
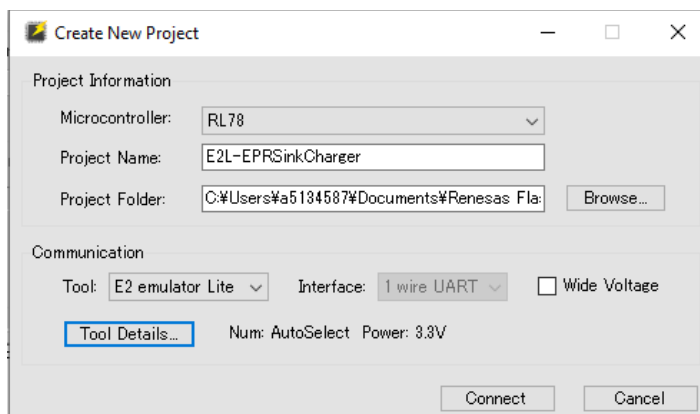
3.4.3 FW writing with Renesas on-chip debugging emulator

User can write (load) firmware by Renesas on-chip debugging emulator. Since RTK-G015-EPRSinkCharger does not have full 14 pin connector for the emulator, User shall connect via a converter which is made with the bundled cable when using Renesas on-chip debugging emulator.

1. Connect conversion connector to J12 on the board.
2. Connect Renesas on-chip debugging emulator to conversion connector.
3. Connect the emulator to USB port of the PC.

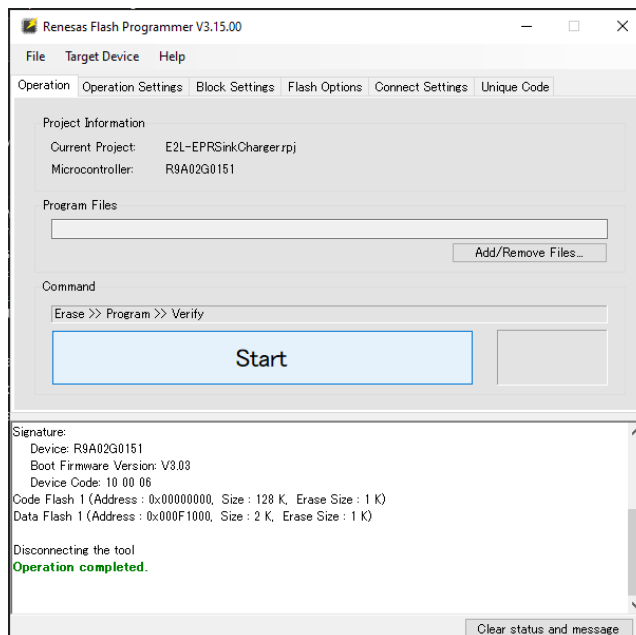
Figure 3-13 Board connection for programming by on-chip debugging emulator

4. Execute the "Renesas Flash Programmer V3.xx."
5. Create a "New Project".
6. Select the "RL78" in the "Microcontroller"-list box, input an arbitrary name in the "Project Name"
7. Select your on-chip debugging emulator product in the "Tool"-list box.
8. Click the "Tool detail" and select the "3.3V" in the Power Supply, then click "Connect".

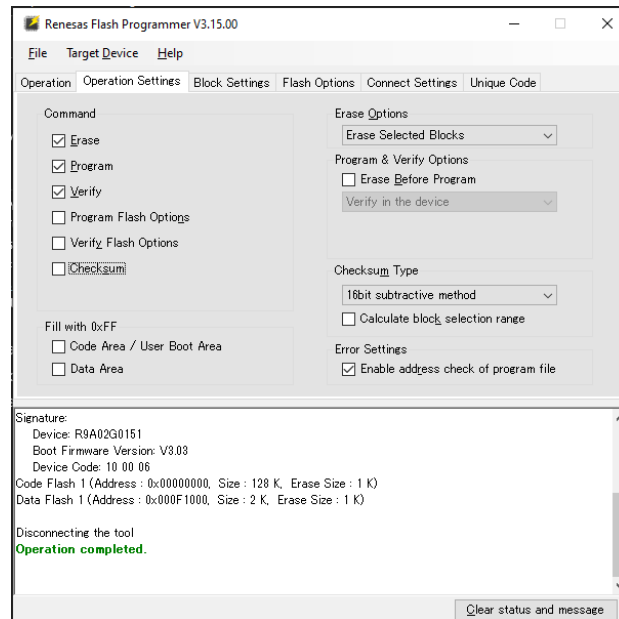


9. Below window appears if new project is created correctly.

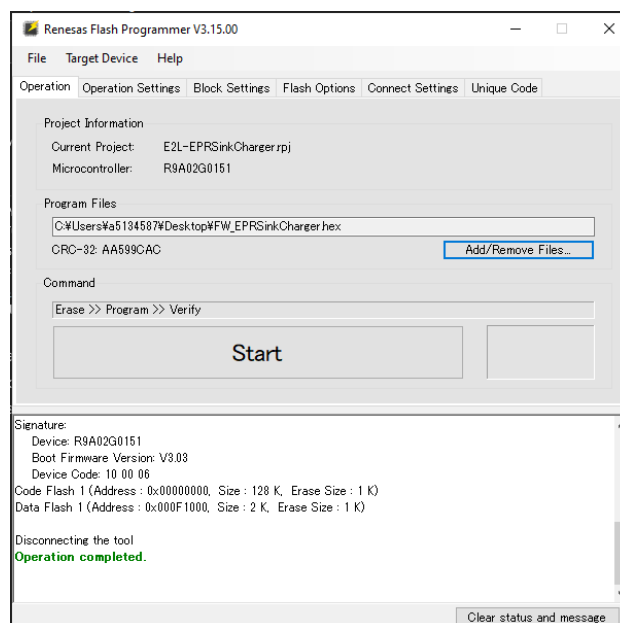
Note: Confirm that the Microcontroller can detect “R9A02G0151”



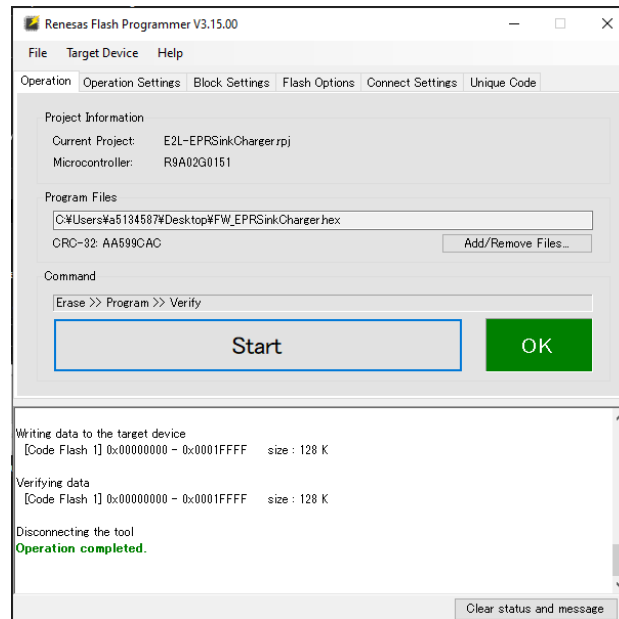
10. Check the “Erase”, “Program” and “Verify” in the “Operation Settings”-tab



11. Click the “Start” if you start programming a flash memory data



12. The “OK” is indicated if program is completed successfully.

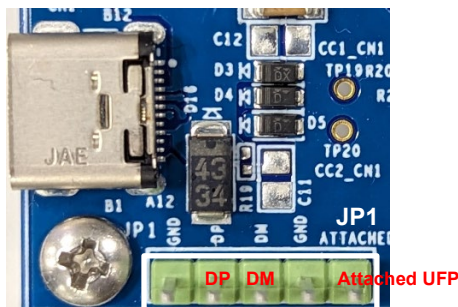


4. Optional features

4.1 Supports USB peripheral function

RTK-G015-EPRSinkCharger is designed for Sink only(SNK) Charger / Power Bank turnkey solution. There is no USB data communication feature on this board. It has an interface to expand the test/debug of USB2.0 based peripheral function with system.

Figure 4-1 Connector for USB2.0 based peripheral debugging

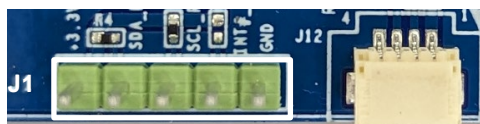


To debug USB2.0 peripheral on RTK-G015-EPRSinkCharger, if there is a jumper between DP and DM of JP1, please remove it and D+/D- signaling of system shall be connected to DP/DM of JP1. Since V_{BUS} appears 0~28V (max), Signal pin "Attached UFP" is allocated on JP1 to detect attach/detach on Type-C[®]. System can detect Type-C attach/detach by using this signal.

4.2 Supports SMBus Slave Interface

RTK-G015-EPRSinkCharger has a SMBus Slave Interface to communicate with other controllers outside of this board. It is an interface to expand the feature with total system.

Figure 4-2 Connector for SMBus Slave Interface



To control RTK-G015-EPRSinkCharger by external controller via SMBus Slave Interface, SMBus Master signaling of system shall be connected to J1. When system wants to control RTK-G015-EPRSinkCharger, please ask Renesas' contact person.

Revision History

Rev.	Date	Description	
		Page	Summary
1.00	Jun 11, 2024	-	Initial release
1.01	Aug 20, 2024	2	Changed document number of RAA489118 Short Form DS
		6	Changed Figure 1-1
1.02	Aug 21, 2024	1,2,5,9	Add information for 48V 3-Level Buck Pre-Regulator
		1,2,13,15,19,20,24,25,26,27,29	Changed the version from 1.2.1.0 to 1.2.2.0 for VIDWriter.
		1,5,6,8,11,16,19,20	Add information for RTK-G015-EPRSinkCharger-240W
1.03	Oct 11, 2024	1	Changed document title

General Precautions in the Handling of Microprocessing Unit and Microcontroller Unit Products

The following usage notes are applicable to all Microprocessing unit and Microcontroller unit products from Renesas. For detailed usage notes on the products covered by this document, refer to the relevant sections of the document as well as any technical updates that have been issued for the products.

1. Precaution against Electrostatic Discharge (ESD)

A strong electrical field, when exposed to a CMOS device, can cause destruction of the gate oxide and ultimately degrade the device operation. Steps must be taken to stop the generation of static electricity as much as possible, and quickly dissipate it when it occurs. Environmental control must be adequate. When it is dry, a humidifier should be used. This is recommended to avoid using insulators that can easily build up static electricity. Semiconductor devices must be stored and transported in an anti-static container, static shielding bag or conductive material. All test and measurement tools including work benches and floors must be grounded. The operator must also be grounded using a wrist strap. Semiconductor devices must not be touched with bare hands. Similar precautions must be taken for printed circuit boards with mounted semiconductor devices.

2. Processing at power-on

The state of the product is undefined at the time when power is supplied. The states of internal circuits in the LSI are indeterminate and the states of register settings and pins are undefined at the time when power is supplied. In a finished product where the reset signal is applied to the external reset pin, the states of pins are not guaranteed from the time when power is supplied until the reset process is completed. In a similar way, the states of pins in a product that is reset by an on-chip power-on reset function are not guaranteed from the time when power is supplied until the power reaches the level at which resetting is specified.

3. Input of signal during power-off state

Do not input signals or an I/O pull-up power supply while the device is powered off. The current injection that results from input of such a signal or I/O pull-up power supply may cause malfunction and the abnormal current that passes in the device at this time may cause degradation of internal elements. Follow the guideline for input signal during power-off state as described in your product documentation.

4. Handling of unused pins

Handle unused pins in accordance with the directions given under handling of unused pins in the manual. The input pins of CMOS products are generally in the high-impedance state. In operation with an unused pin in the open-circuit state, extra electromagnetic noise is induced in the vicinity of the LSI, an associated shoot-through current flows internally, and malfunctions occur due to the false recognition of the pin state as an input signal become possible.

5. Clock signals

After applying a reset, only release the reset line after the operating clock signal becomes stable. When switching the clock signal during program execution, wait until the target clock signal is stabilized. When the clock signal is generated with an external resonator or from an external oscillator during a reset, ensure that the reset line is only released after full stabilization of the clock signal. Additionally, when switching to a clock signal produced with an external resonator or by an external oscillator while program execution is in progress, wait until the target clock signal is stable.

6. Voltage application waveform at input pin

Waveform distortion due to input noise or a reflected wave may cause malfunction. If the input of the CMOS device stays in the area between V_{IL} (Max.) and V_{IH} (Min.) due to noise, for example, the device may malfunction. Take care to prevent chattering noise from entering the device when the input level is fixed, and also in the transition period when the input level passes through the area between V_{IL} (Max.) and V_{IH} (Min.).

7. Prohibition of access to reserved addresses

Access to reserved addresses is prohibited. The reserved addresses are provided for possible future expansion of functions. Do not access these addresses as the correct operation of the LSI is not guaranteed.

8. Differences between products

Before changing from one product to another, for example to a product with a different part number, confirm that the change will not lead to problems. The characteristics of a microprocessing unit or microcontroller unit products in the same group but having a different part number might differ in terms of internal memory capacity, layout pattern, and other factors, which can affect the ranges of electrical characteristics, such as characteristic values, operating margins, immunity to noise, and amount of radiated noise. When changing to a product with a different part number, implement a system-evaluation test for the given product.

Notice

1. Descriptions of circuits, software and other related information in this document are provided only to illustrate the operation of semiconductor products and application examples. You are fully responsible for the incorporation or any other use of the circuits, software, and information in the design of your product or system. Renesas Electronics disclaims any and all liability for any losses and damages incurred by you or third parties arising from the use of these circuits, software, or information.
2. Renesas Electronics hereby expressly disclaims any warranties against and liability for infringement or any other claims involving patents, copyrights, or other intellectual property rights of third parties, by or arising from the use of Renesas Electronics products or technical information described in this document, including but not limited to, the product data, drawings, charts, programs, algorithms, and application examples.
3. No license, express, implied or otherwise, is granted hereby under any patents, copyrights or other intellectual property rights of Renesas Electronics or others.
4. You shall be responsible for determining what licenses are required from any third parties, and obtaining such licenses for the lawful import, export, manufacture, sales, utilization, distribution or other disposal of any products incorporating Renesas Electronics products, if required.
5. You shall not alter, modify, copy, or reverse engineer any Renesas Electronics product, whether in whole or in part. Renesas Electronics disclaims any and all liability for any losses or damages incurred by you or third parties arising from such alteration, modification, copying or reverse engineering.
6. Renesas Electronics products are classified according to the following two quality grades: "Standard" and "High Quality". The intended applications for each Renesas Electronics product depends on the product's quality grade, as indicated below.

"Standard": Computers; office equipment; communications equipment; test and measurement equipment; audio and visual equipment; home electronic appliances; machine tools; personal electronic equipment; industrial robots; etc.

"High Quality": Transportation equipment (automobiles, trains, ships, etc.); traffic control (traffic lights); large-scale communication equipment; key financial terminal systems; safety control equipment; etc.

Unless expressly designated as a high reliability product or a product for harsh environments in a Renesas Electronics data sheet or other Renesas Electronics document, Renesas Electronics products are not intended or authorized for use in products or systems that may pose a direct threat to human life or bodily injury (artificial life support devices or systems; surgical implantations; etc.), or may cause serious property damage (space system; undersea repeaters; nuclear power control systems; aircraft control systems; key plant systems; military equipment; etc.). Renesas Electronics disclaims any and all liability for any damages or losses incurred by you or any third parties arising from the use of any Renesas Electronics product that is inconsistent with any Renesas Electronics data sheet, user's manual or other Renesas Electronics document.

7. No semiconductor product is absolutely secure. Notwithstanding any security measures or features that may be implemented in Renesas Electronics hardware or software products, Renesas Electronics shall have absolutely no liability arising out of any vulnerability or security breach, including but not limited to any unauthorized access to or use of a Renesas Electronics product or a system that uses a Renesas Electronics product. RENESAS ELECTRONICS DOES NOT WARRANT OR GUARANTEE THAT RENESAS ELECTRONICS PRODUCTS, OR ANY SYSTEMS CREATED USING RENESAS ELECTRONICS PRODUCTS WILL BE INVULNERABLE OR FREE FROM CORRUPTION, ATTACK, VIRUSES, INTERFERENCE, HACKING, DATA LOSS OR THEFT, OR OTHER SECURITY INTRUSION ("Vulnerability Issues"). RENESAS ELECTRONICS DISCLAIMS ANY AND ALL RESPONSIBILITY OR LIABILITY ARISING FROM OR RELATED TO ANY VULNERABILITY ISSUES. FURTHERMORE, TO THE EXTENT PERMITTED BY APPLICABLE LAW, RENESAS ELECTRONICS DISCLAIMS ANY AND ALL WARRANTIES, EXPRESS OR IMPLIED, WITH RESPECT TO THIS DOCUMENT AND ANY RELATED OR ACCOMPANYING SOFTWARE OR HARDWARE, INCLUDING BUT NOT LIMITED TO THE IMPLIED WARRANTIES OF MERCHANTABILITY, OR FITNESS FOR A PARTICULAR PURPOSE.
8. When using Renesas Electronics products, refer to the latest product information (data sheets, user's manuals, application notes, "General Notes for Handling and Using Semiconductor Devices" in the reliability handbook, etc.), and ensure that usage conditions are within the ranges specified by Renesas Electronics with respect to maximum ratings, operating power supply voltage range, heat dissipation characteristics, installation, etc. Renesas Electronics disclaims any and all liability for any malfunctions, failure or accident arising out of the use of Renesas Electronics products outside of such specified ranges.
9. Although Renesas Electronics endeavors to improve the quality and reliability of Renesas Electronics products, semiconductor products have specific characteristics, such as the occurrence of failure at a certain rate and malfunctions under certain use conditions. Unless designated as a high reliability product or a product for harsh environments in a Renesas Electronics data sheet or other Renesas Electronics document, Renesas Electronics products are not subject to radiation resistance design. You are responsible for implementing safety measures to guard against the possibility of bodily injury, injury or damage caused by fire, and/or danger to the public in the event of a failure or malfunction of Renesas Electronics products, such as safety design for hardware and software, including but not limited to redundancy, fire control and malfunction prevention, appropriate treatment for aging degradation or any other appropriate measures. Because the evaluation of microcomputer software alone is very difficult and impractical, you are responsible for evaluating the safety of the final products or systems manufactured by you.
10. Please contact a Renesas Electronics sales office for details as to environmental matters such as the environmental compatibility of each Renesas Electronics product. You are responsible for carefully and sufficiently investigating applicable laws and regulations that regulate the inclusion or use of controlled substances, including without limitation, the EU RoHS Directive, and using Renesas Electronics products in compliance with all these applicable laws and regulations. Renesas Electronics disclaims any and all liability for damages or losses occurring as a result of your noncompliance with applicable laws and regulations.
11. Renesas Electronics products and technologies shall not be used for or incorporated into any products or systems whose manufacture, use, or sale is prohibited under any applicable domestic or foreign laws or regulations. You shall comply with any applicable export control laws and regulations promulgated and administered by the governments of any countries asserting jurisdiction over the parties or transactions.
12. It is the responsibility of the buyer or distributor of Renesas Electronics products, or any other party who distributes, disposes of, or otherwise sells or transfers the product to a third party, to notify such third party in advance of the contents and conditions set forth in this document.
13. This document shall not be reprinted, reproduced or duplicated in any form, in whole or in part, without prior written consent of Renesas Electronics.
14. Please contact a Renesas Electronics sales office if you have any questions regarding the information contained in this document or Renesas Electronics products.

(Note1) "Renesas Electronics" as used in this document means Renesas Electronics Corporation and also includes its directly or indirectly controlled subsidiaries.

(Note2) "Renesas Electronics product(s)" means any product developed or manufactured by or for Renesas Electronics.

(Rev.5.0-1 October 2020)

Corporate Headquarters

TOYOSU FORESIA, 3-2-24 Toyosu,
Koto-ku, Tokyo 135-0061, Japan
www.renesas.com

Trademarks

USB Type-C® and USB-C® are trademarks of USB Implementers Forum. Renesas and the Renesas logo are trademarks of Renesas Electronics Corporation. All trademarks and registered trademarks are the property of their respective owners.

Contact information

For further information on a product, technology, the most up-to-date version of a document, or your nearest sales office, please visit:
www.renesas.com/contact/.