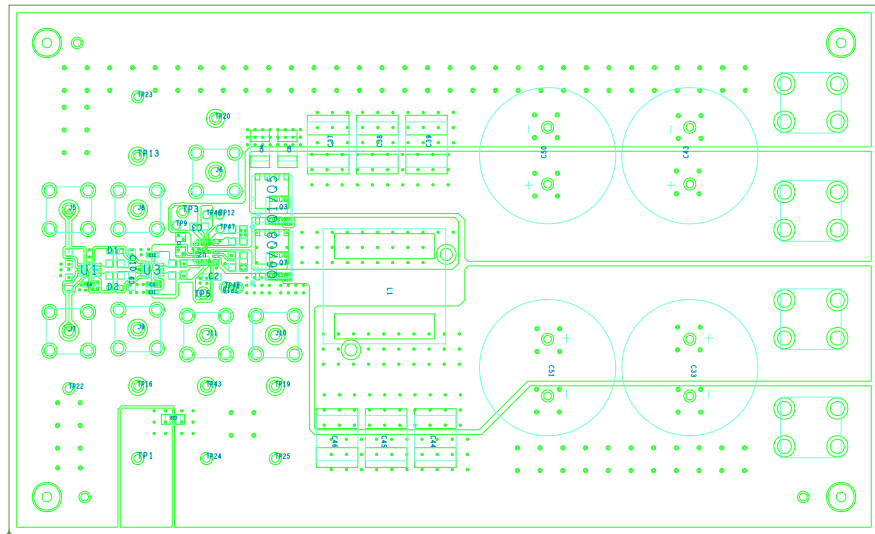
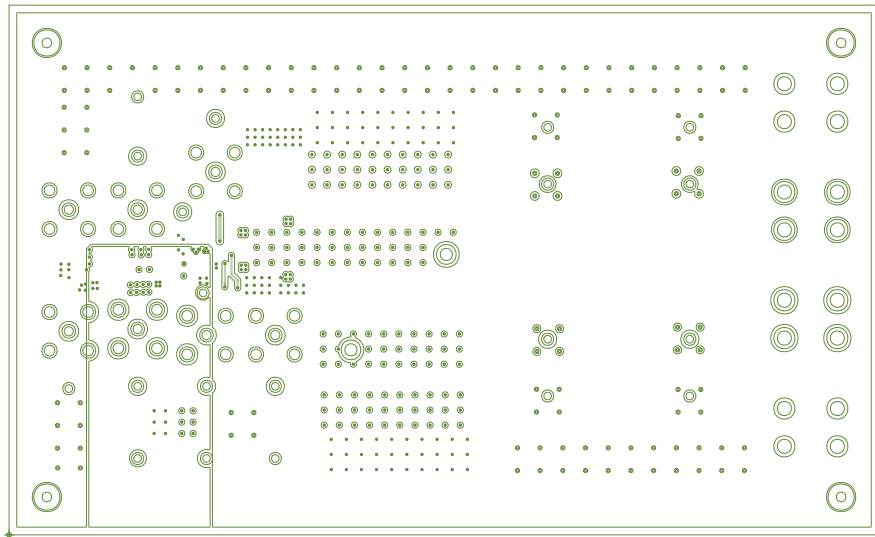


ART FILM - TOP



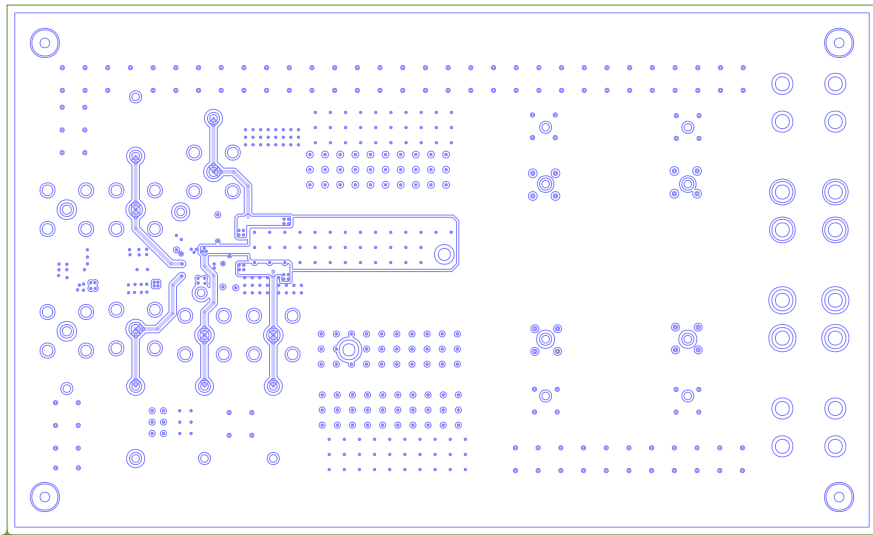
ART FILM - TOP

ART FILM - POWER



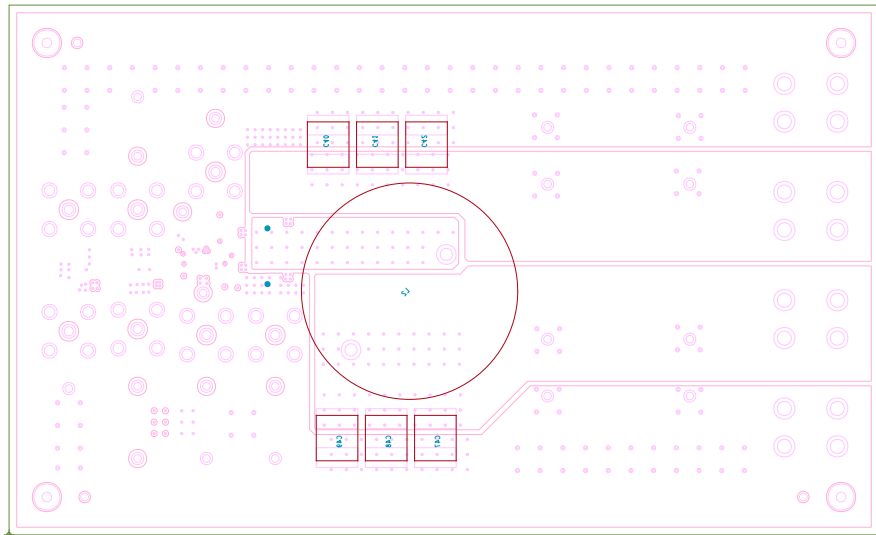
ART FILM - POWER

ART FILM - GND

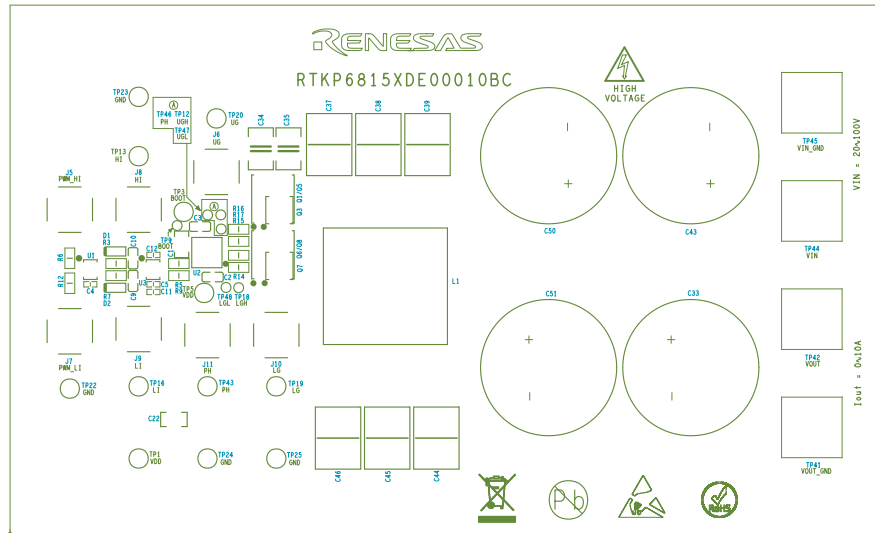


ART FILM - GND

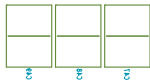
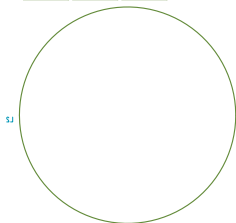
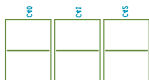
ART FILM - BOTTOM

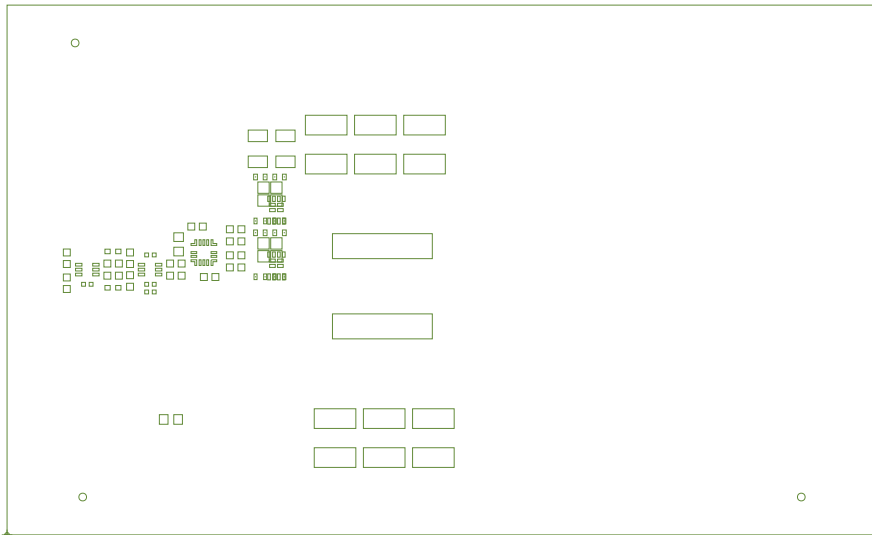


ART FILM - BOTTOM

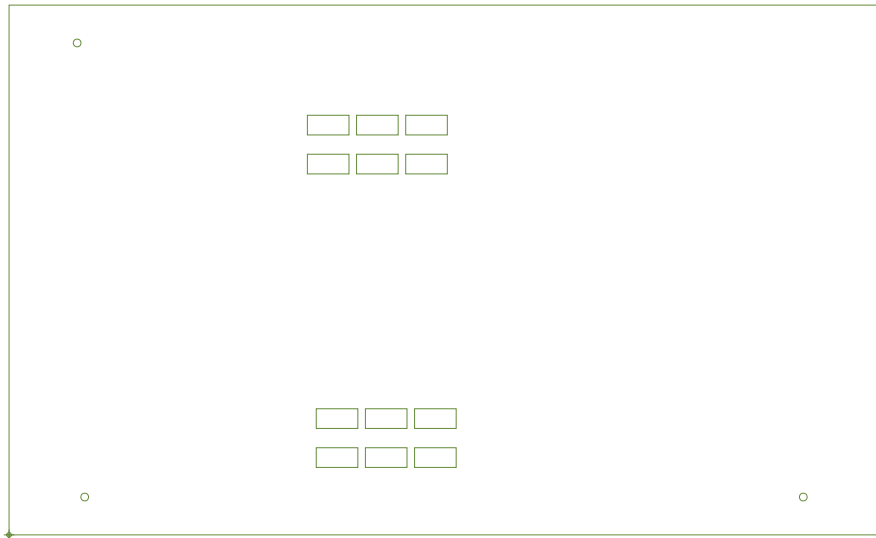


GENEVA



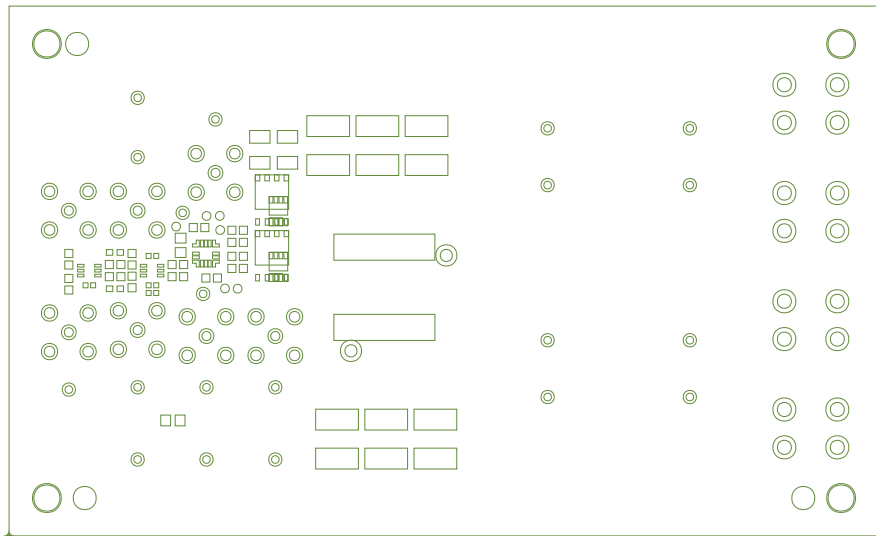


ART FILM - PASTEMASK_BOTTOM

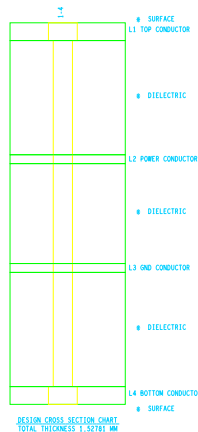


ART FILM - PASTEMASK_BOTTOM

ART FILM - SOLDERMASK_TOP



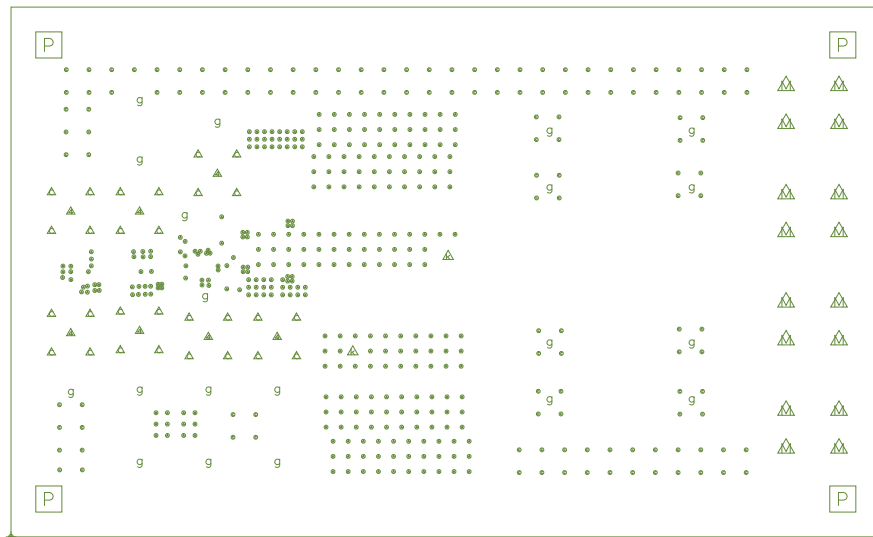
ART FILM - SOLDERMASK_TOP



NOTES:

- THIS BOARD IS RHHS COMPLIANT.
- PRINTED WIRING BOARD DESIGN AND ACCEPTANCE CRITERIA SHALL BE IAW WITH THE REQUIREMENTS OF IPC-D-275 AND IPC-A-600.
- MATERIAL: FR4 (RHHS COMPLIANT), TOP LAYER AND BOTTOM LAYER: 2 OZ COPPER, INTERNAL LAYER: 1 OZ COPPER.
- APPLY SOLDER MASK, BOTH SIDES OVER BARE COPPER IAW IPC-SM-840, CLASS 2 (LPI) (BLUE MASK)
- ALL PATTERNS ARE VIEWED FROM THE PRIMARY SIDE LOOKING THROUGH THE BOARD.
- UNLESS OTHERWISE SPECIFIED ALL HOLE DIAMETERS ARE AFTER PLATING.
- APPLY SILKSCREEN USING WHITE NON-CONDUCTIVE EPOXY BASED INK.
- PWB MUST BE 100% ELECTRICALLY TESTED FOR SHORTS AND CONTINUITY. USE NETLIST PROVIDED RTK68150-FA0.IPC IAW IPC-D-356.
- MARK DATE CODE AND MANUFACTURES IDENTIFICATION ON SOLDER SIDE USE NETLIST PROVIDED RTK68150-FA0.IPC IAW IPC-D-356.
- TOLERANCE ON ALL DRILL HOLES SHALL BE IAW IPC-D-2221 & 2222 UNLESS OTHERWISE SPECIFIED.
- VIAS NEED TO BE FILLED WITH RESIN AND FILLED WITH ELECTROPLATING.
- SURFACE FINISH: ENIG

STACKUP TABLE					
UNIT - MILs					
#	NAME	TYPE	MATERIAL	THICKNESS	TOLERANCE
1	SURFACE		AIR	0	+0/-0
1	TOP CONDUCTOR	20Z COPPER		2.799213	+0.005067/-0.005068
	DIELECTRIC		FR-4	1.8	+0/-0
2	POWER CONDUCTOR	10Z COPPER		1.401575	+0.002547/-0.00254
	DIELECTRIC		FR-4	15.748031	+0/-0
3	GND CONDUCTOR	10Z COPPER		1.401575	+0.002547/-0.00254
	DIELECTRIC		FR-4	1.8	+0/-0
4	BOTTOM CONDUCTOR	20Z COPPER		2.799213	+0.005067/-0.00508
	SURFACE		AIR	0	+0/-0
	TOTAL THICKNESS			60.149604	



DRILL CHART: TOP to BOTTOM

ALL UNITS ARE IN MILLIMETERS

FIGURE	FINISHED_SIZE	PLATED	QTY
.	0.2032	PLATED	322
.	0.3048	PLATED	133
g	1.0	PLATED	20
▲	1.2	PLATED	7
△	1.4	PLATED	28
▲	1.6	PLATED	2
▲	1.8542	PLATED	16
P	3.4493	NON-PLATED	4